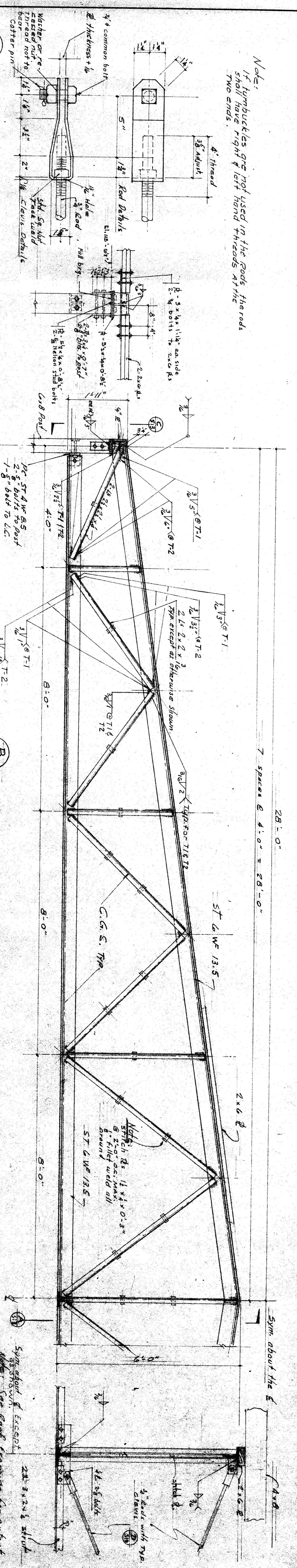
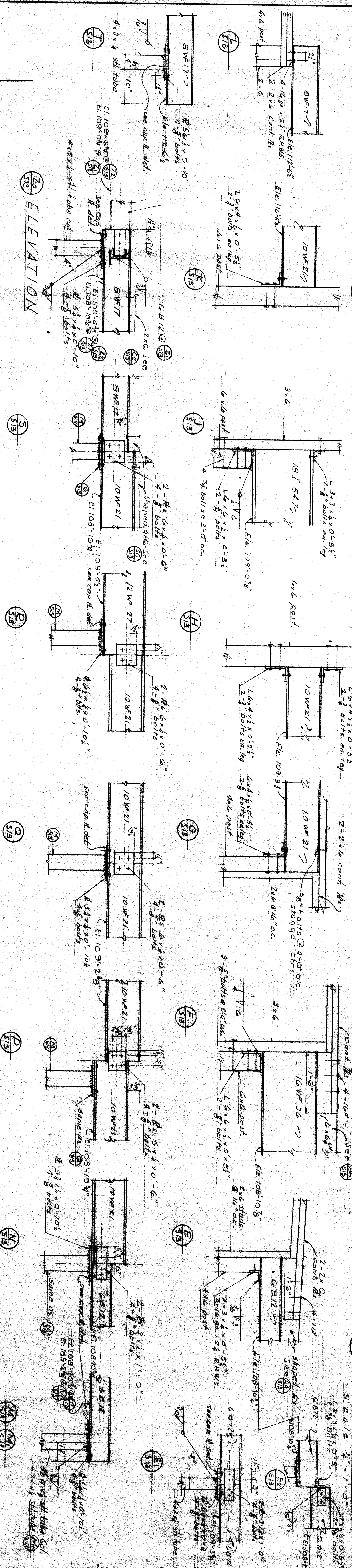


Note:  
If lumber buckles are not used in the rods, the rods shall have right & left hand threads at the two ends.



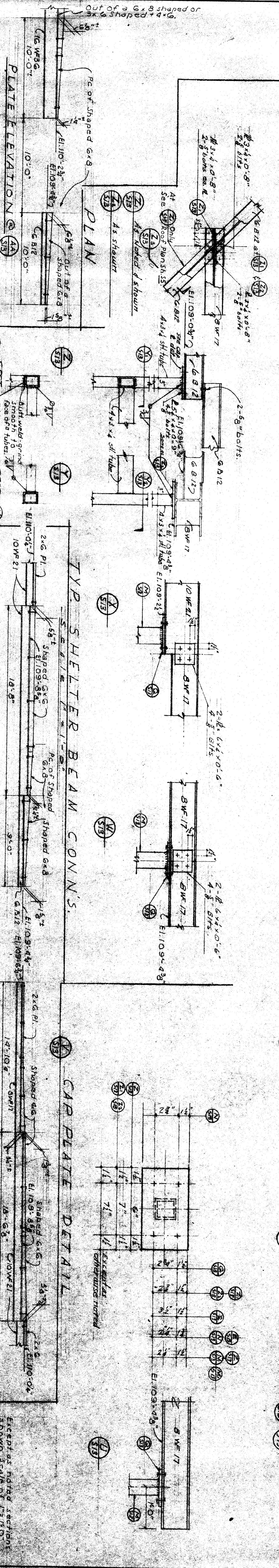
**B STEEL TRUSS DETAILS T-1 & T-2**  
Scale: 3/4" = 1'-0"

**D TYP CLEVIS DETAIL**  
Scale: 3/4" = 1'-0"



**A TRUSS BRACING**  
Scale: 3/4" = 1'-0"

**E ELEVATION**



**C TYP SHELTER BEAM CONNS.**  
Scale: 3/4" = 1'-0"

**PLAN**

**PLATE ELEVATION**

**PLATE ELEVATION**

**SECTIONS**

OFFICE OF SUPERINTENDENT OF SCHOOLS  
STATE OF CALIFORNIA  
DEPARTMENT OF PUBLIC WORKS  
DIVISION OF ARCHITECTURE

BAKERSFIELD CITY SCHOOL DISTRICT  
BAKERSFIELD, CALIFORNIA  
BOARD OF EDUCATION

APPROVED: [Signature] DATE: [ ]

REVISIONS:

DESIGNED BY: [Signature] CHECKED BY: [Signature]

ERNEST L. MCGOY ARCHITECT

BEYTON PARK SCHOOL  
BAKERSFIELD, CALIFORNIA