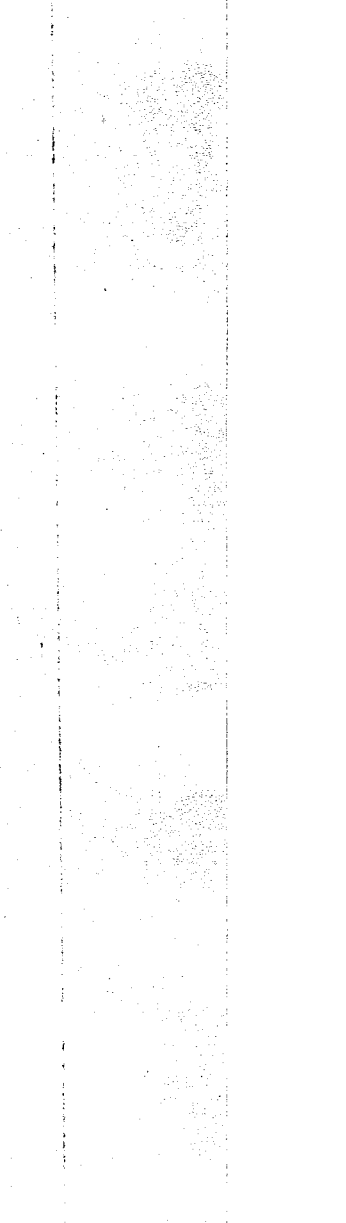
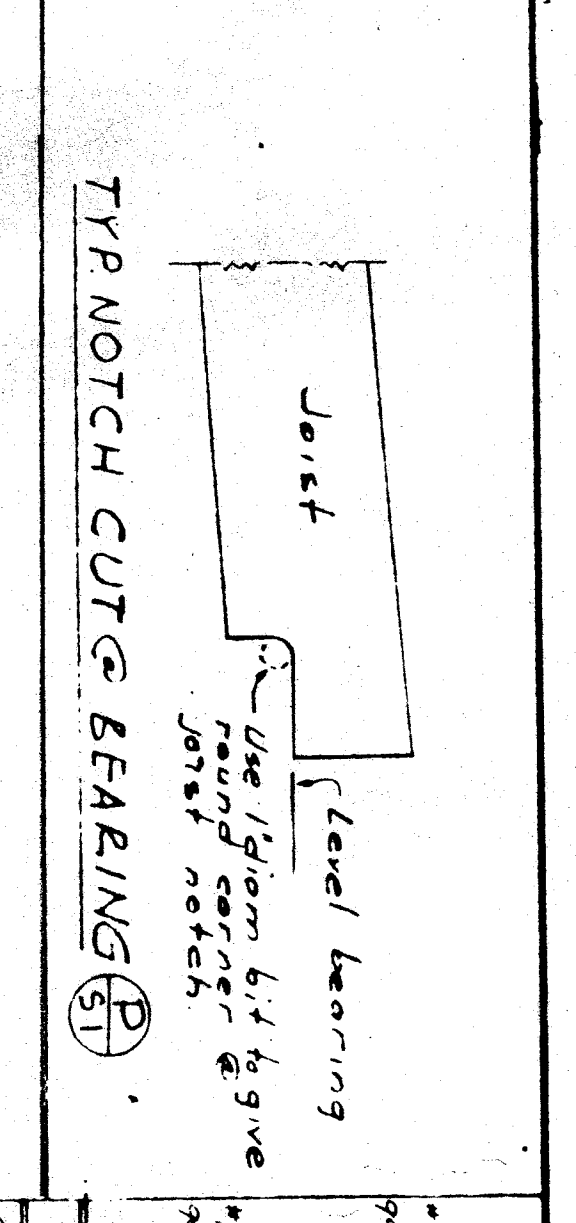
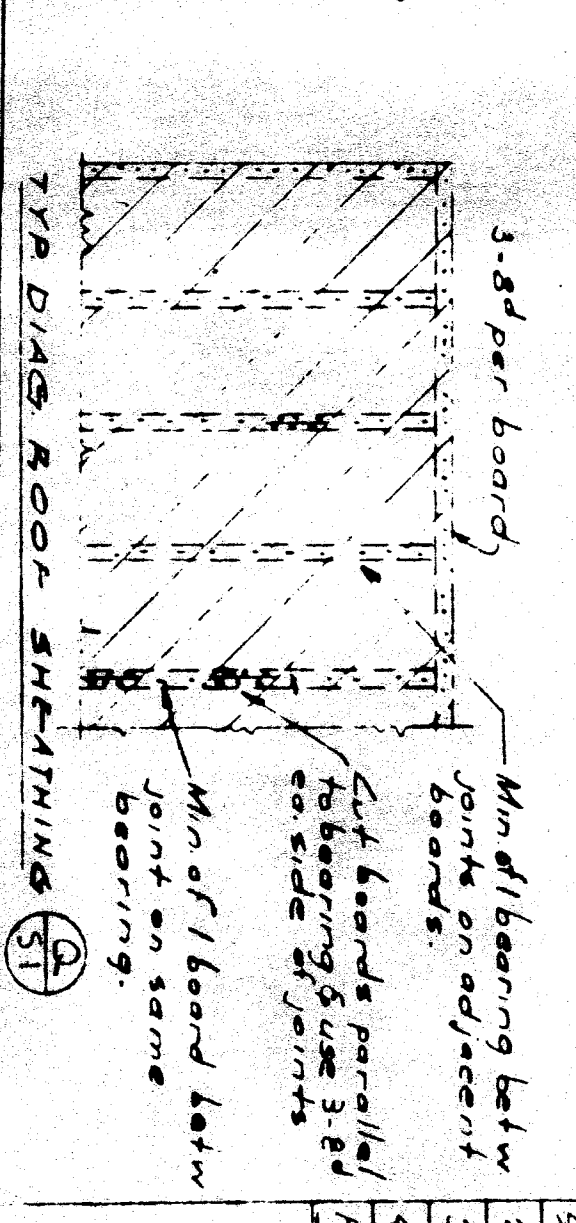
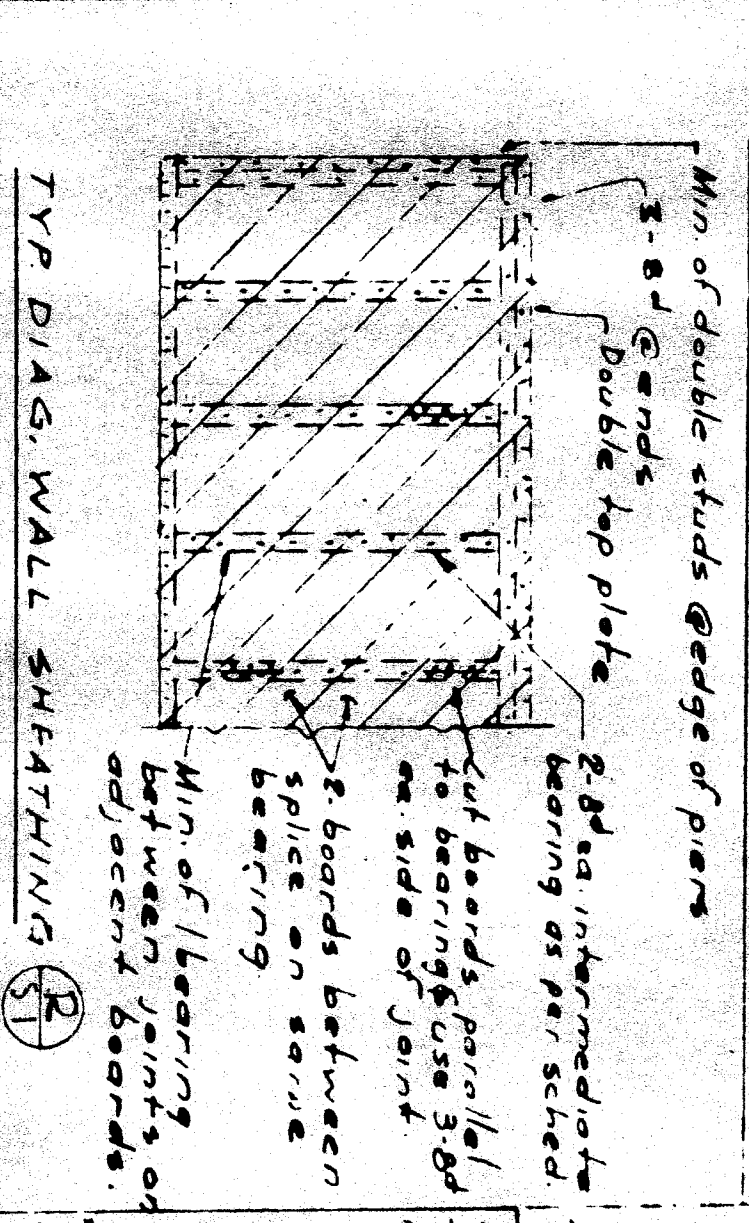
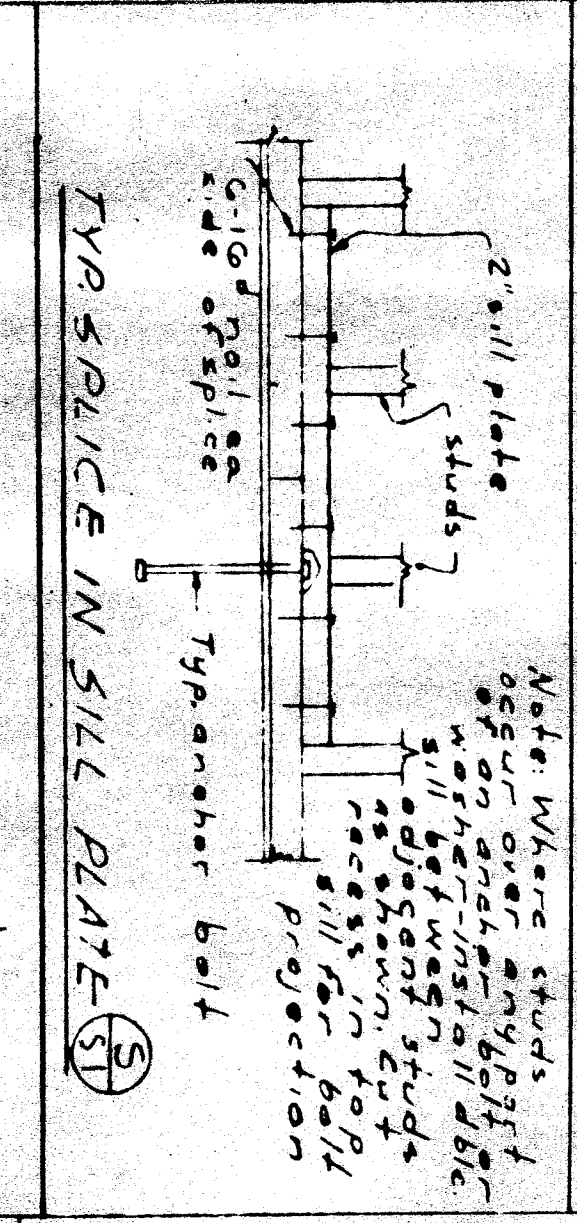
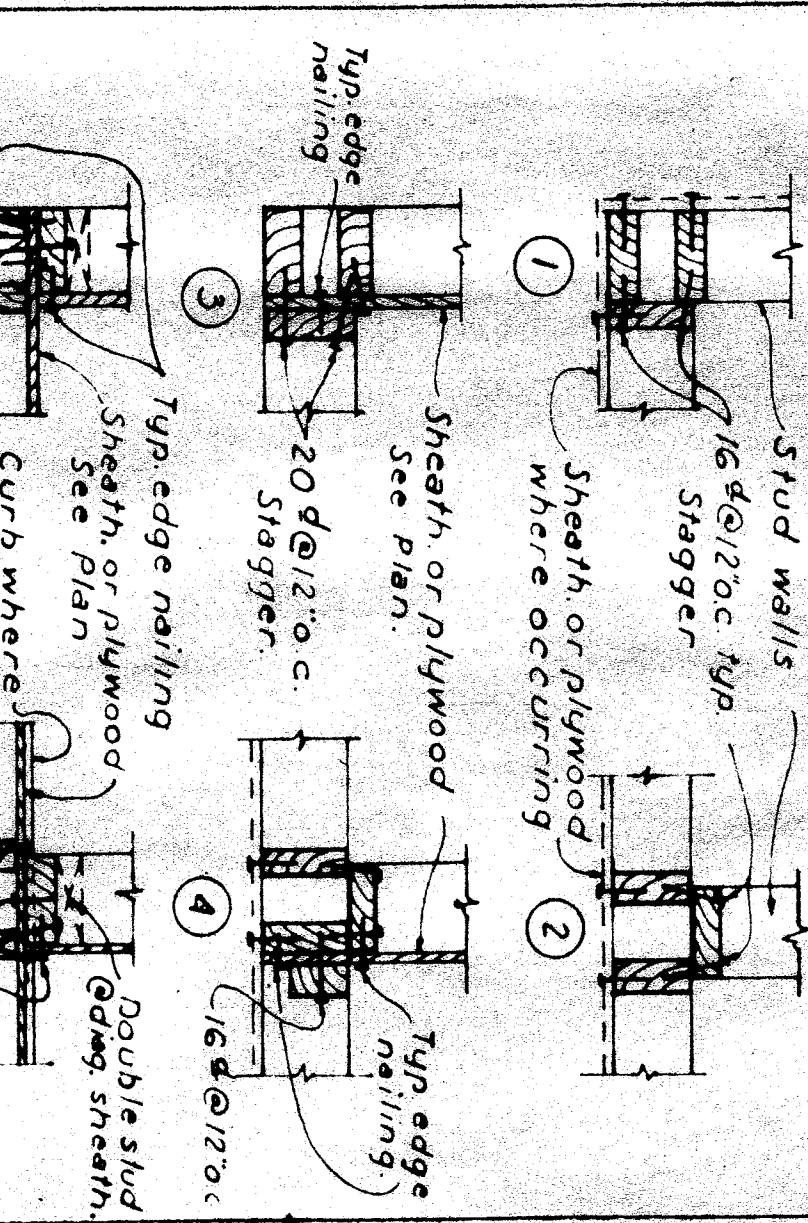
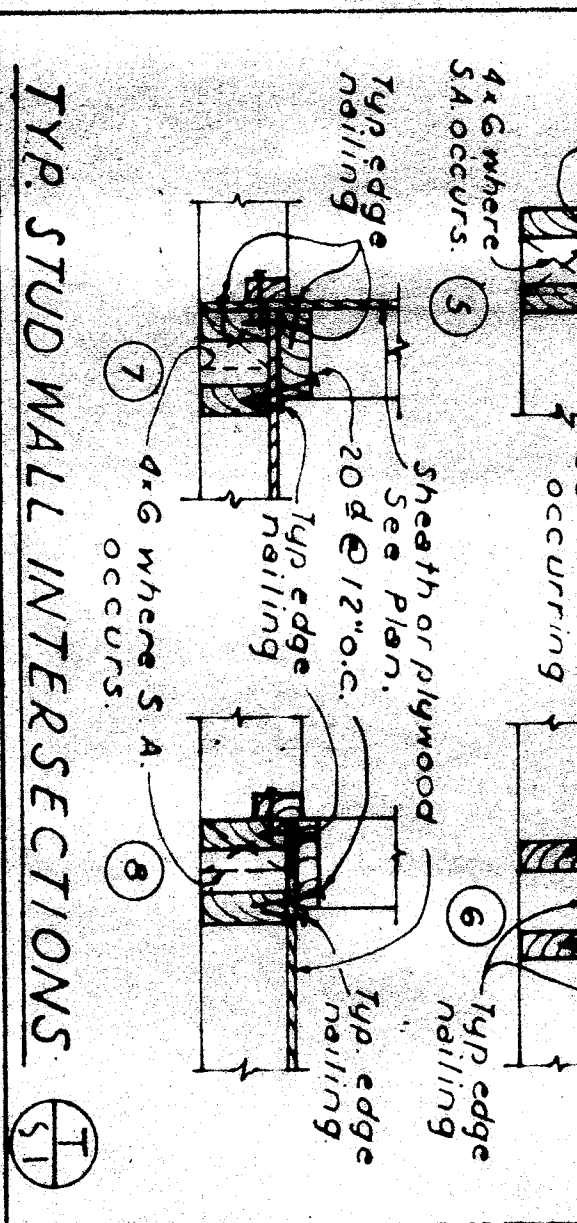
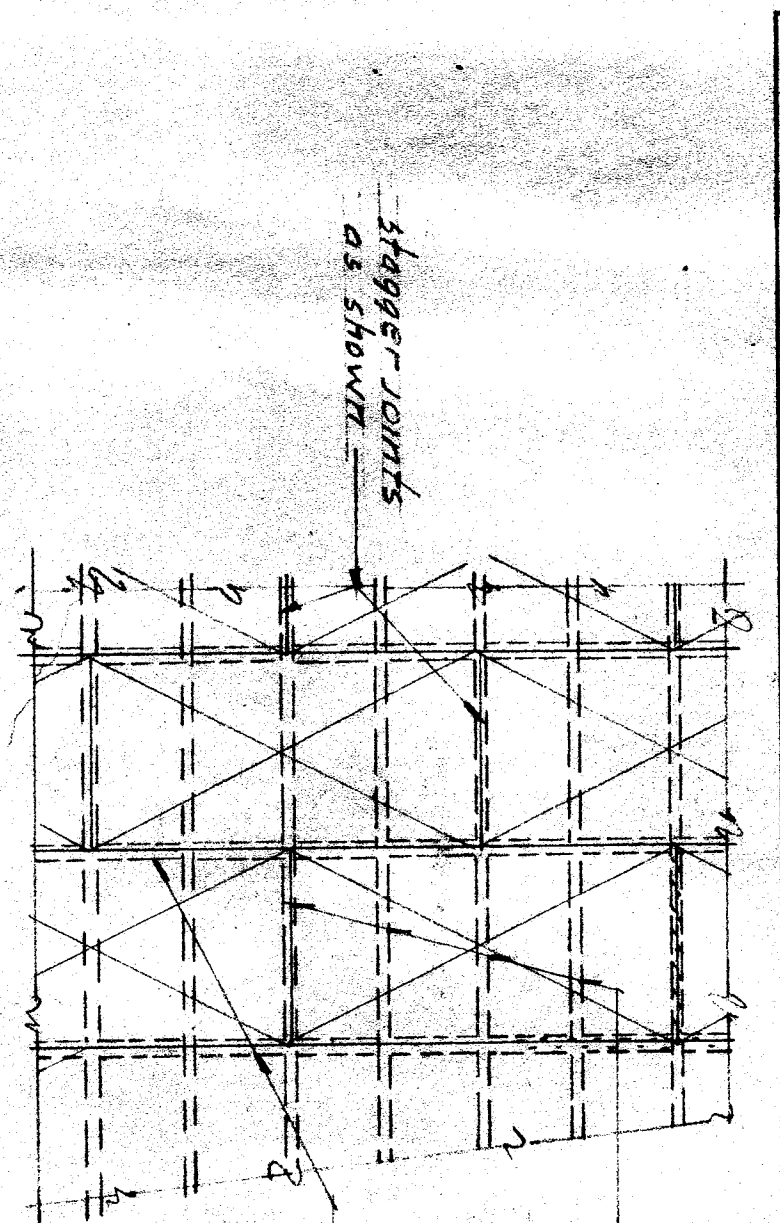
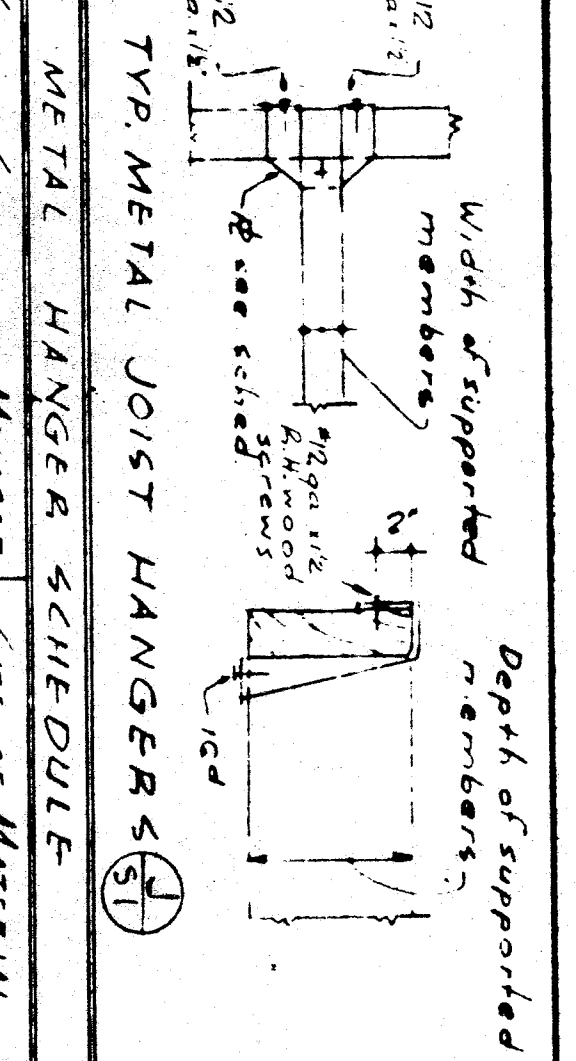
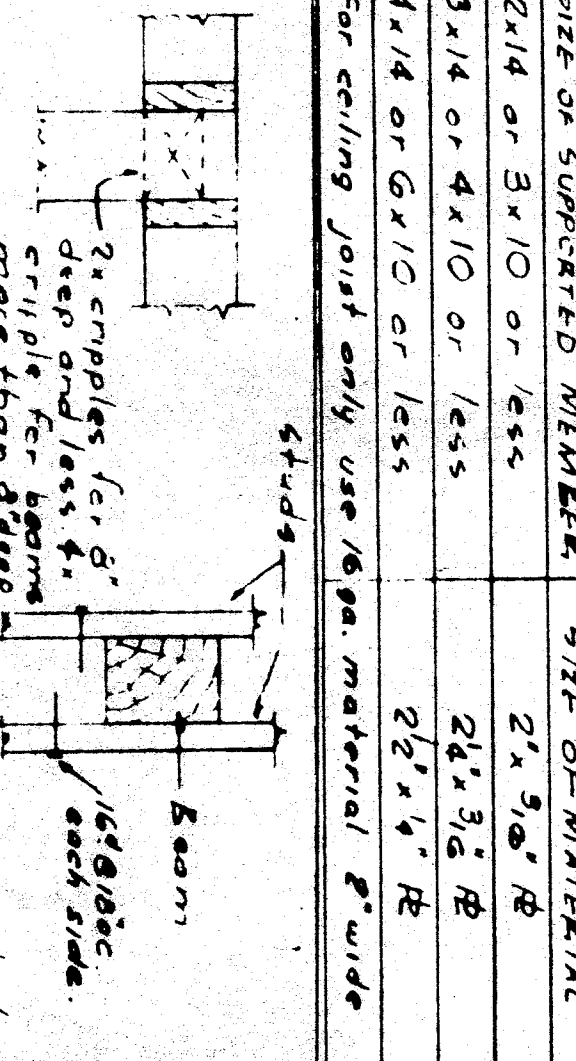
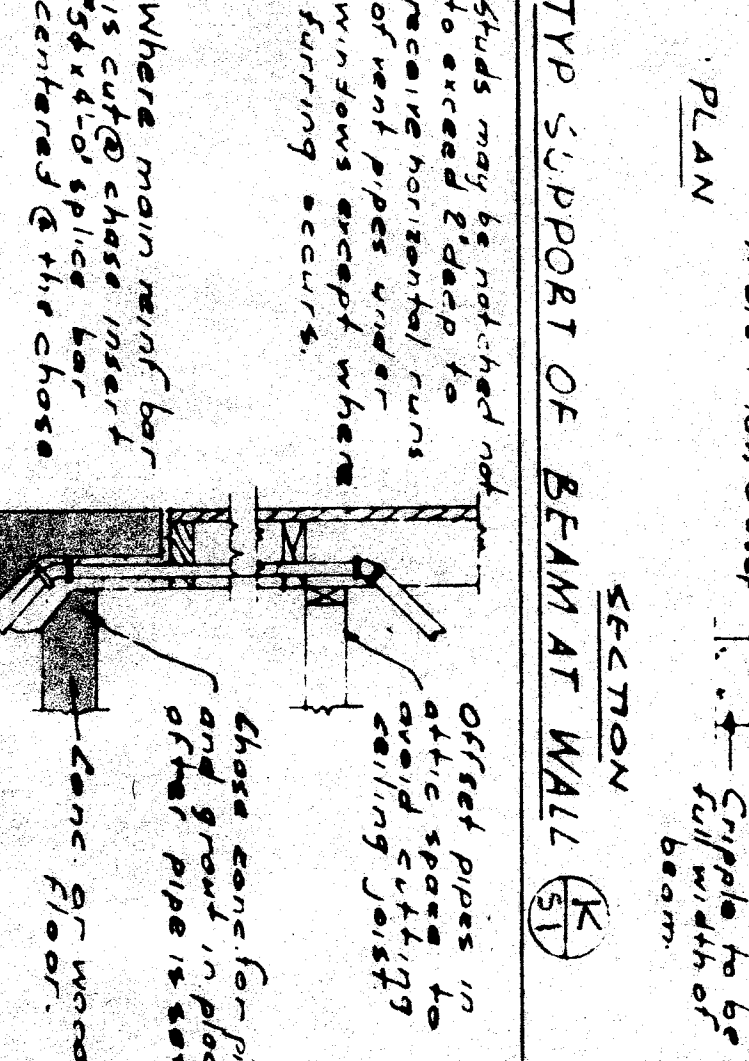
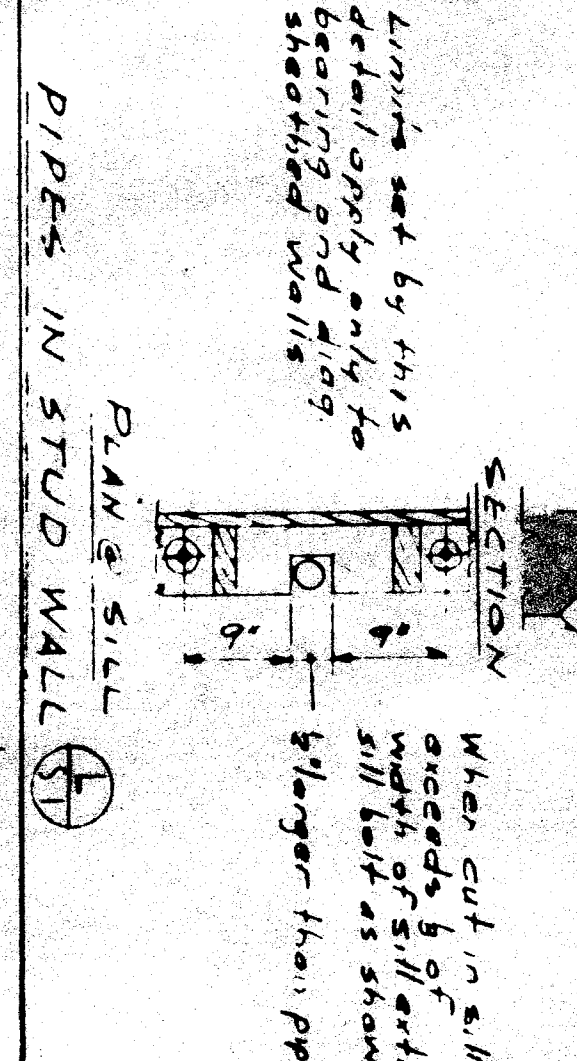
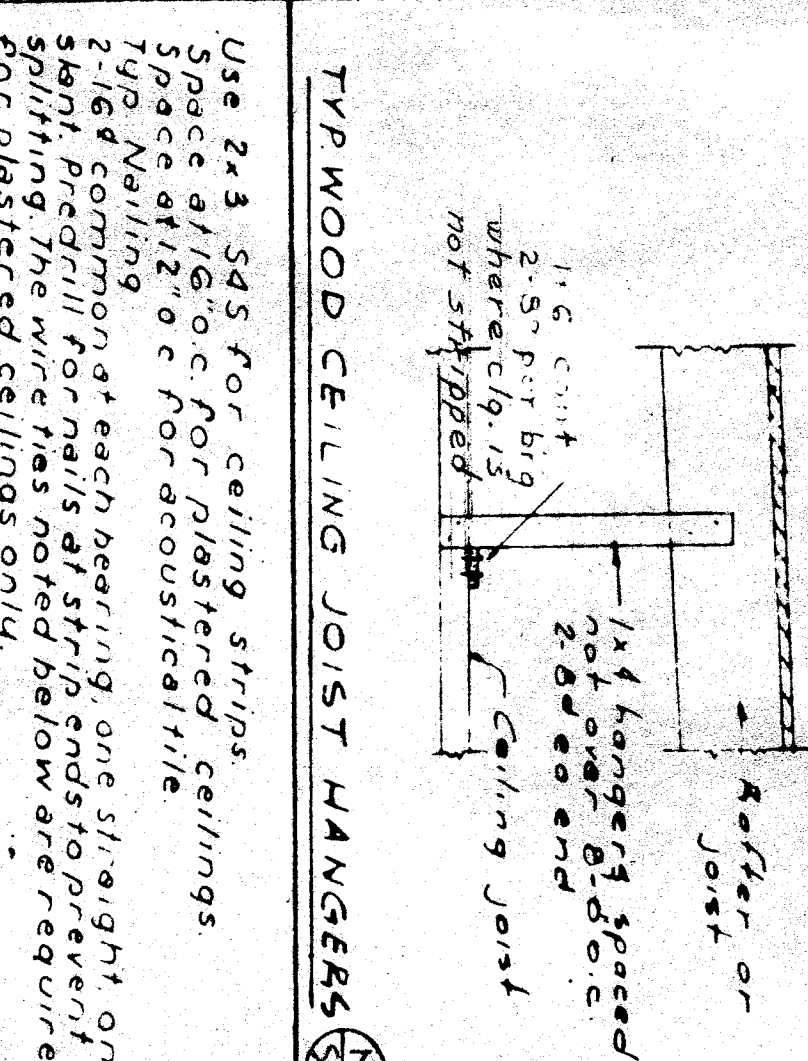
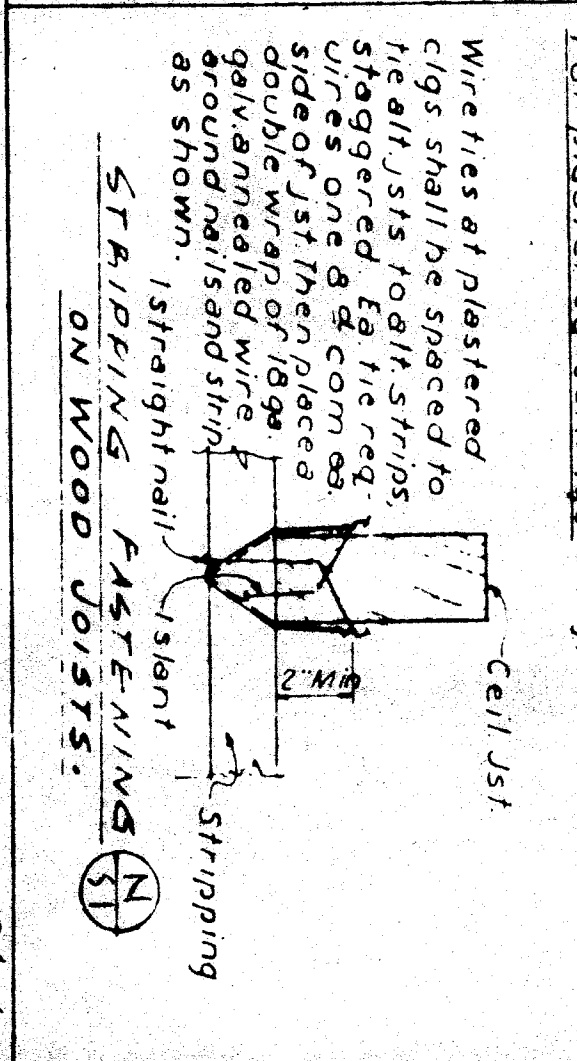
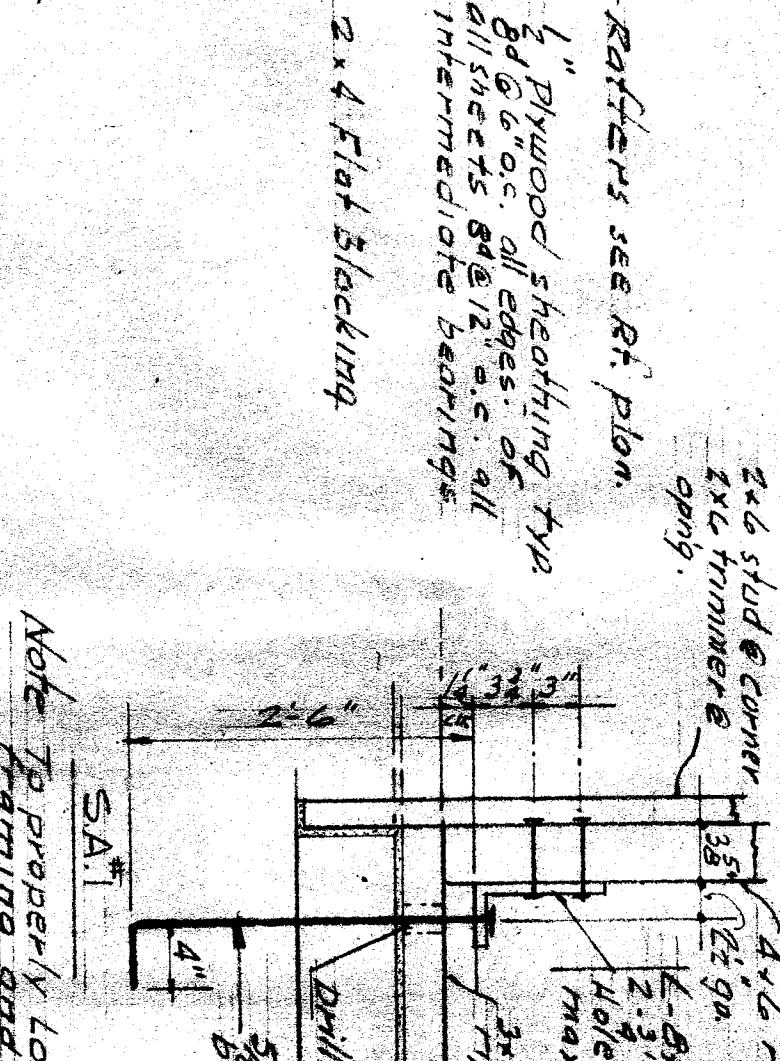


TYPICAL PLYWOOD ROOF SHEATHING



SPECIAL ANCHOR DETAILS



GENERAL NOTES

1. Plywood sheathing to be installed in accordance with manufacturer's instructions. All joints to be staggered. Use 2x4 flat blocking at all intermediate bearings.

2. All steel plates and bolts to be galvanized. Use 1/2" diameter bolts and 3/8" diameter steel plates.

3. All reinforcing bars to be #4 or #5. Use lap splices in accordance with ACI 308. All bars to be tied with #10 wire.

4. All concrete to be placed and finished in accordance with the specifications. Use a minimum of 1800 psi concrete.

5. All wood to be kiln-dried and free of defects. Use a minimum of 2x4 for framing members.

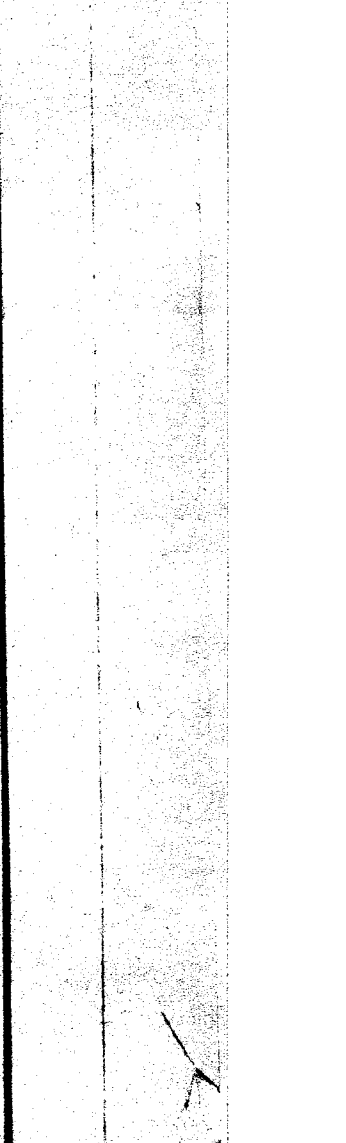
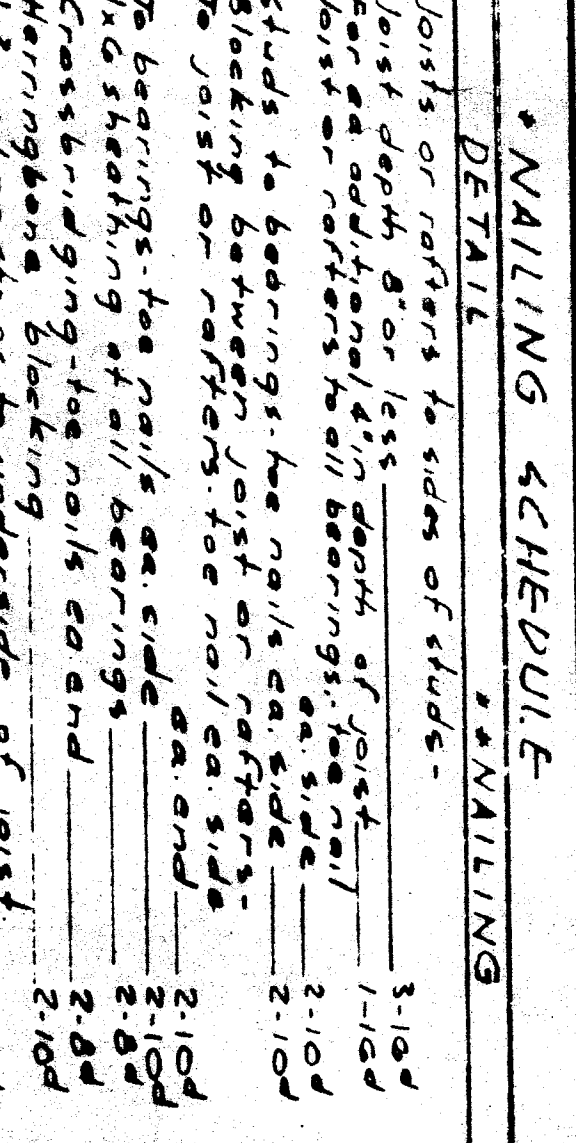
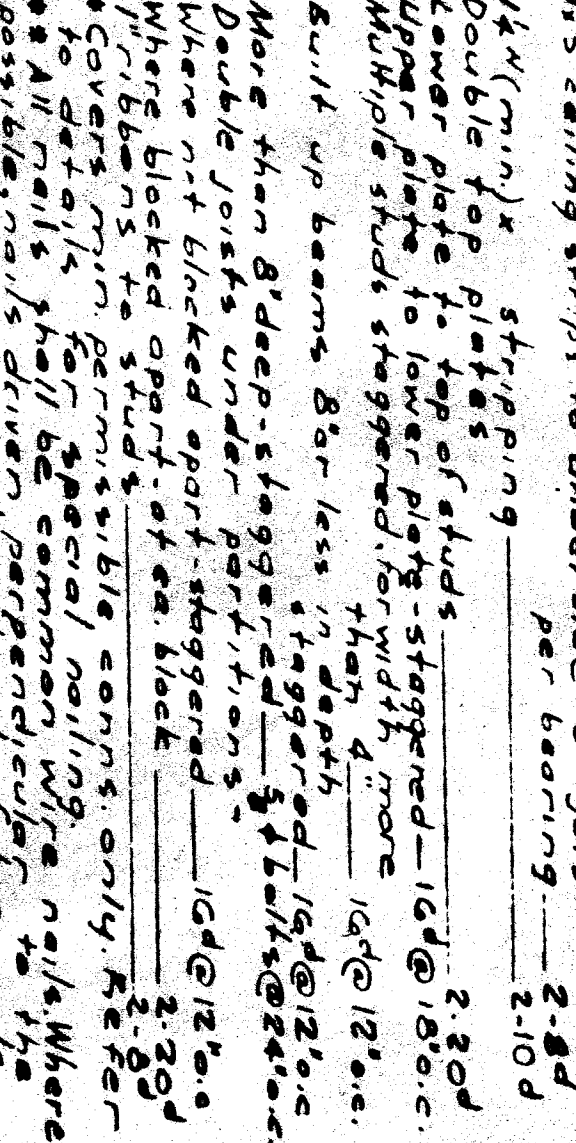
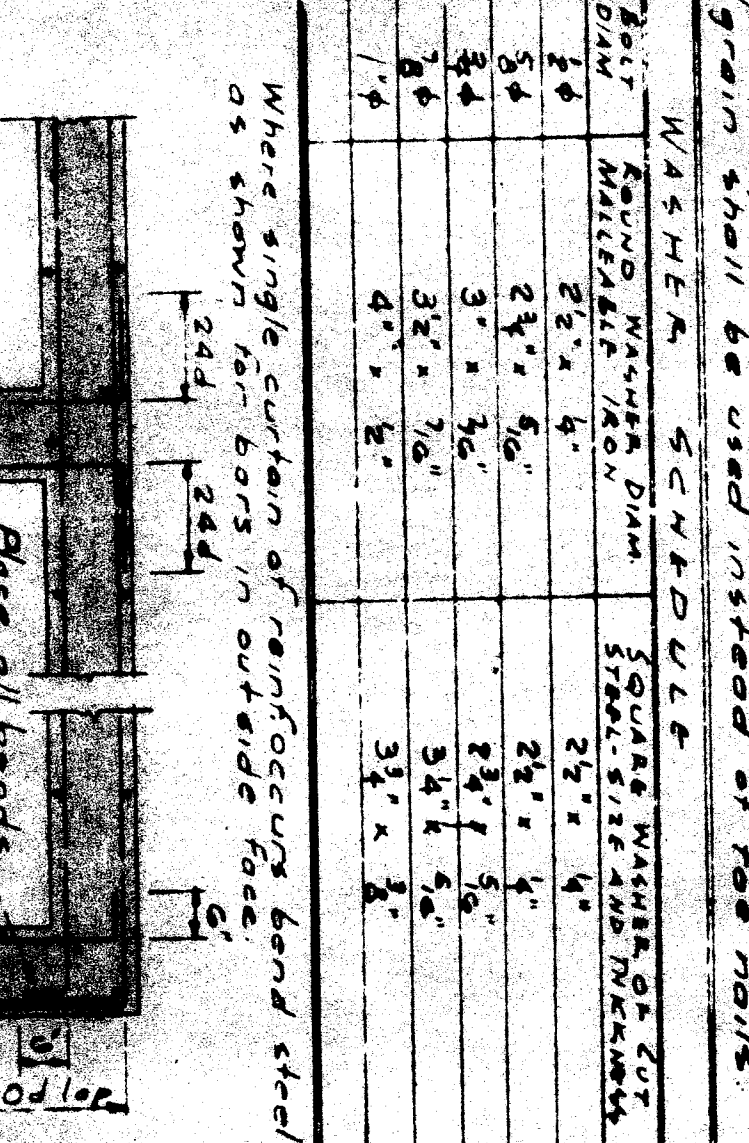
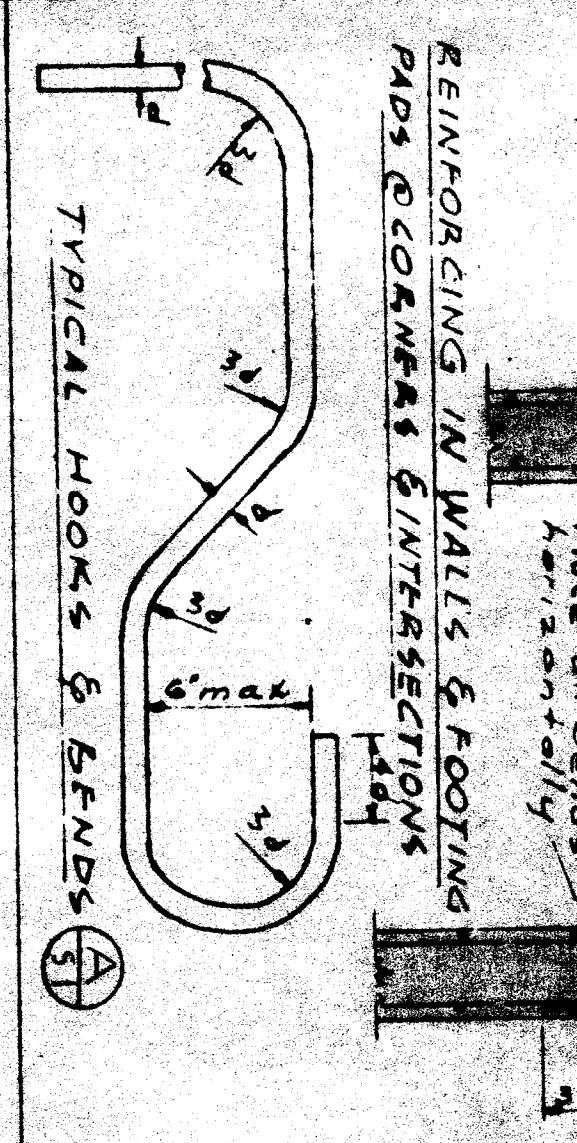
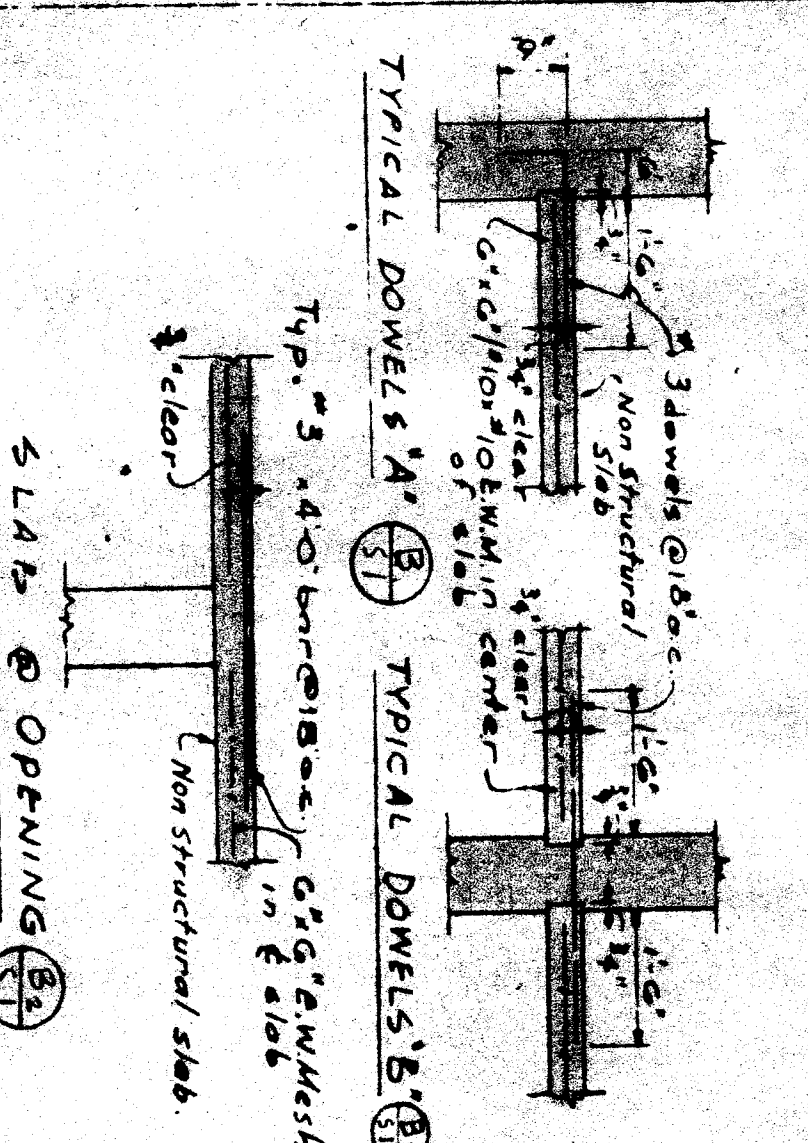
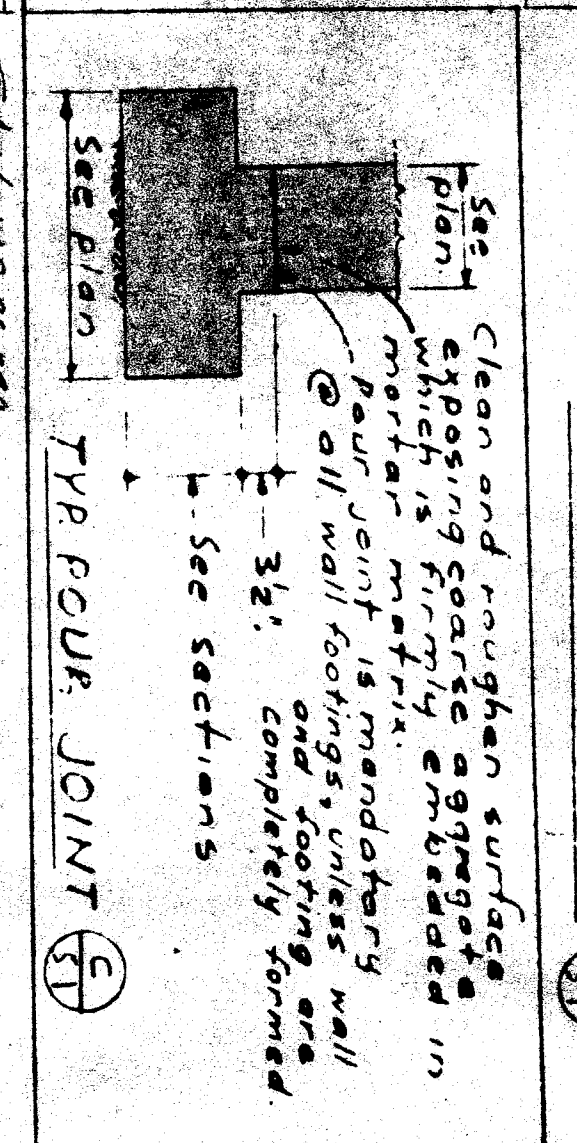
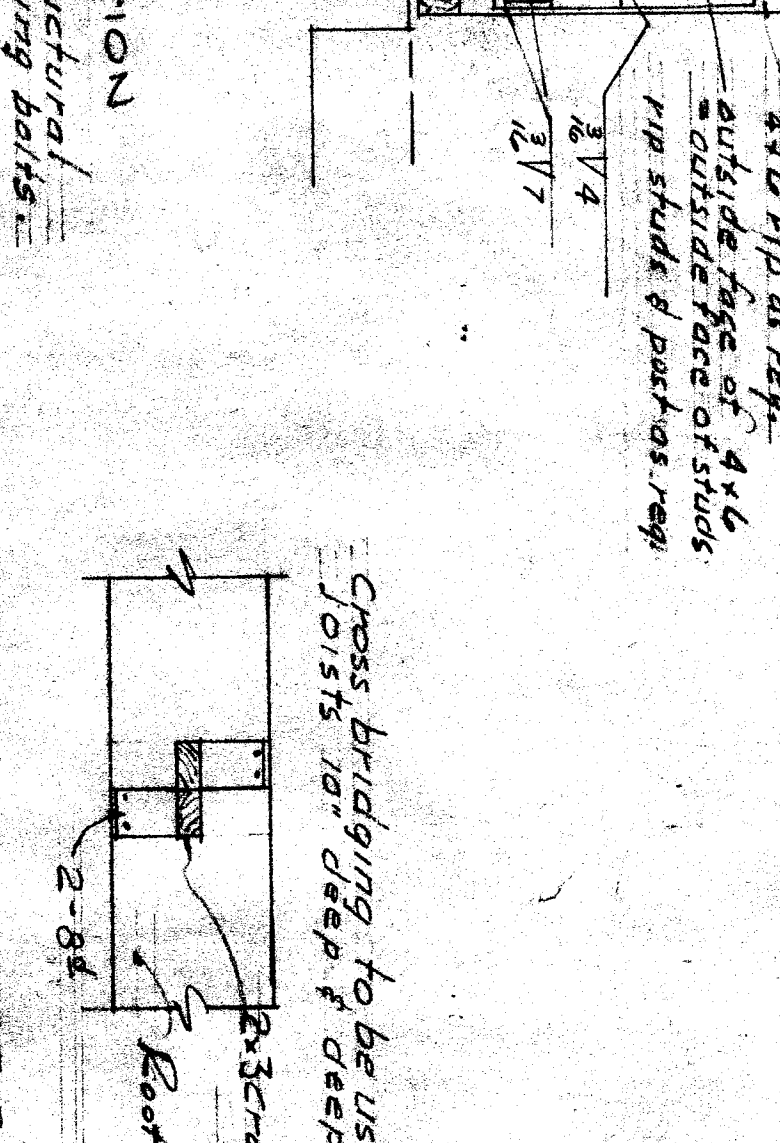
6. All metal to be galvanized. Use a minimum of 1/2" thickness for plates and 1/4" for bolts.

7. All work to be done in accordance with the latest edition of the Building Code of California.

8. All materials to be of good quality and to be used in accordance with the specifications.

9. All work to be done in accordance with the latest edition of the Building Code of California.

GENERAL NOTES & TYPICAL DETAILS



LEGEND

Footing step
 Detail letter
 Sheet number
 E.W.M. Electric welded mesh
 Normal finished floor elevation

Cast in seat
 Wood blocking
 Knit in section

Steel reinforcement bar
 Reinforcing bar
 Slab opening

Slab opening
 Slab opening

Slab opening
 Slab opening

Slab opening
 Slab opening

Slab opening
 Slab opening

Slab opening
 Slab opening

Slab opening
 Slab opening