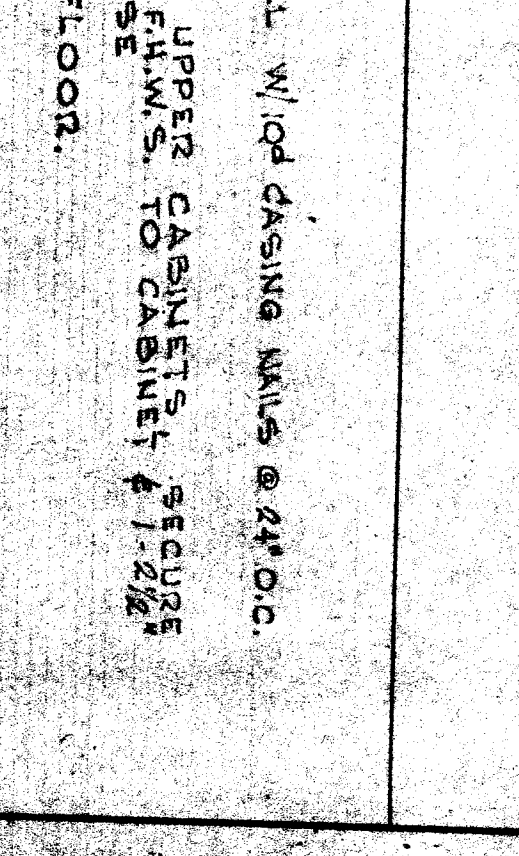
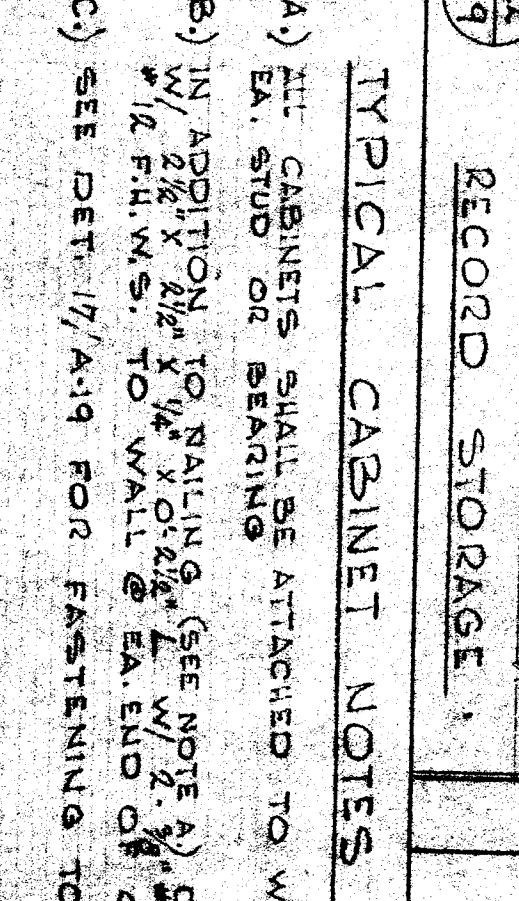
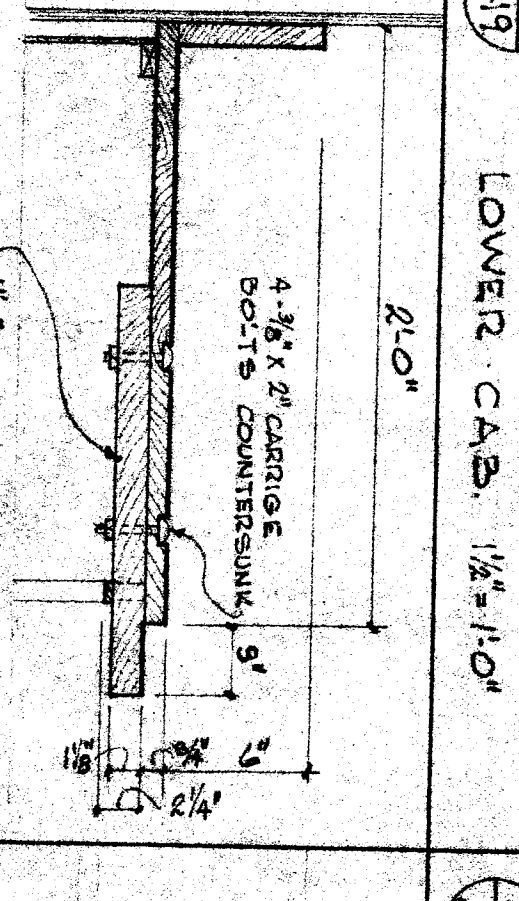
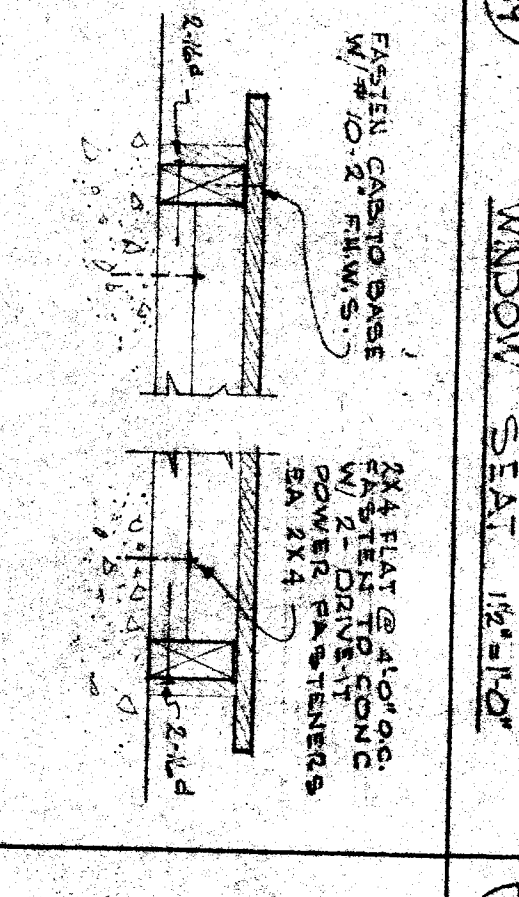
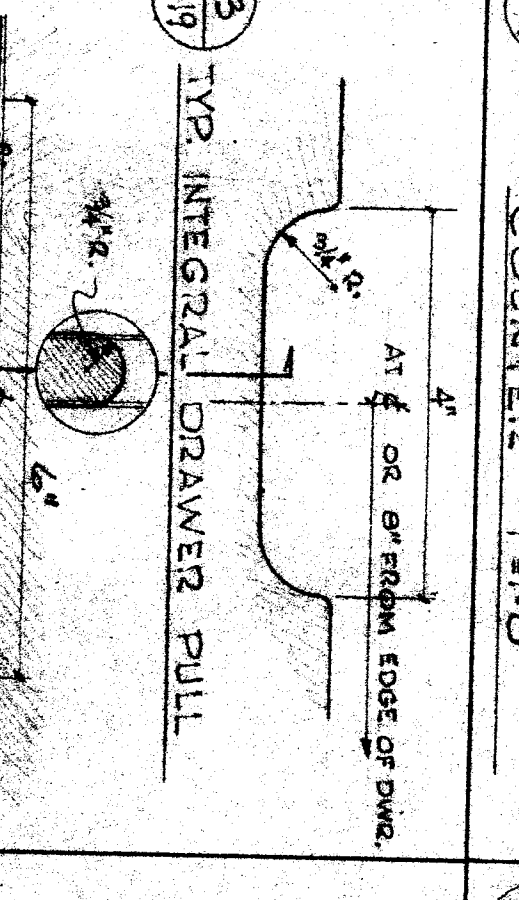
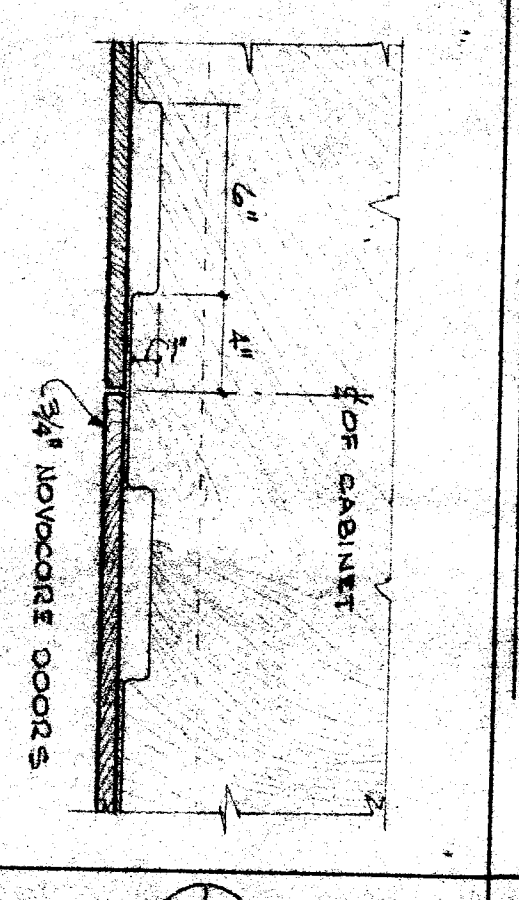
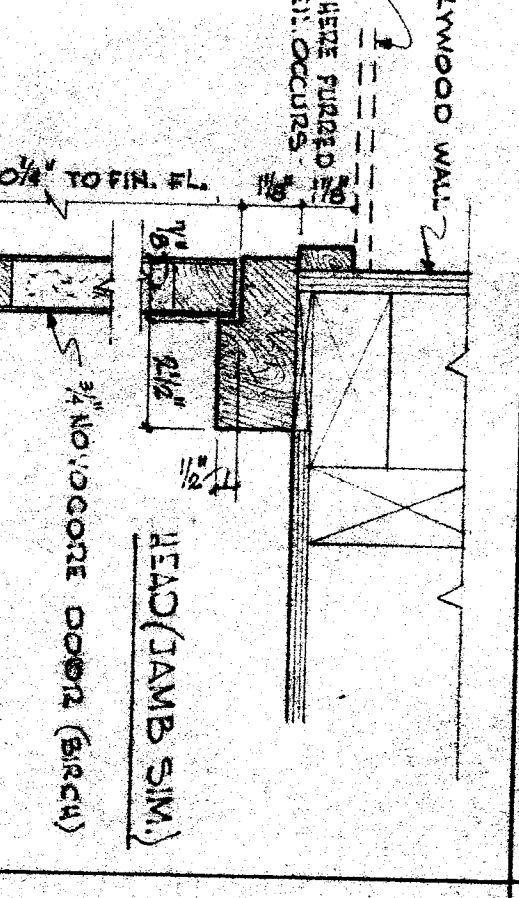
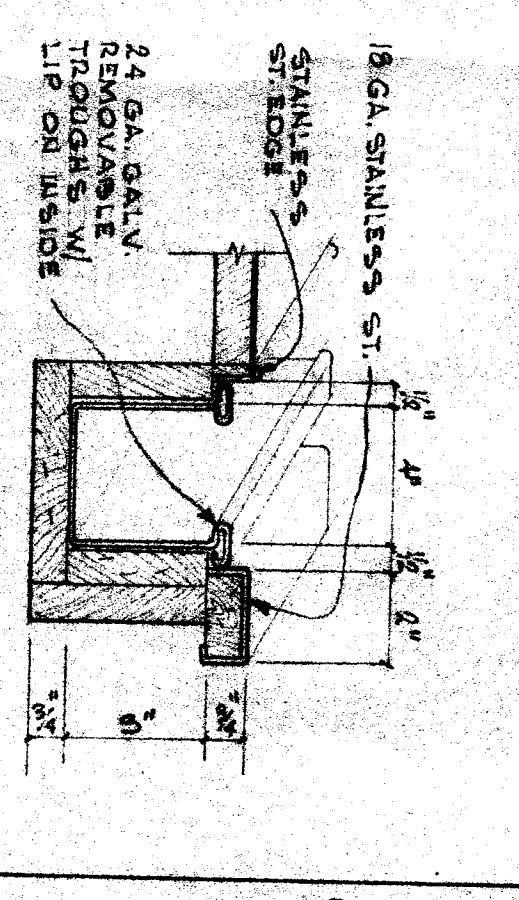
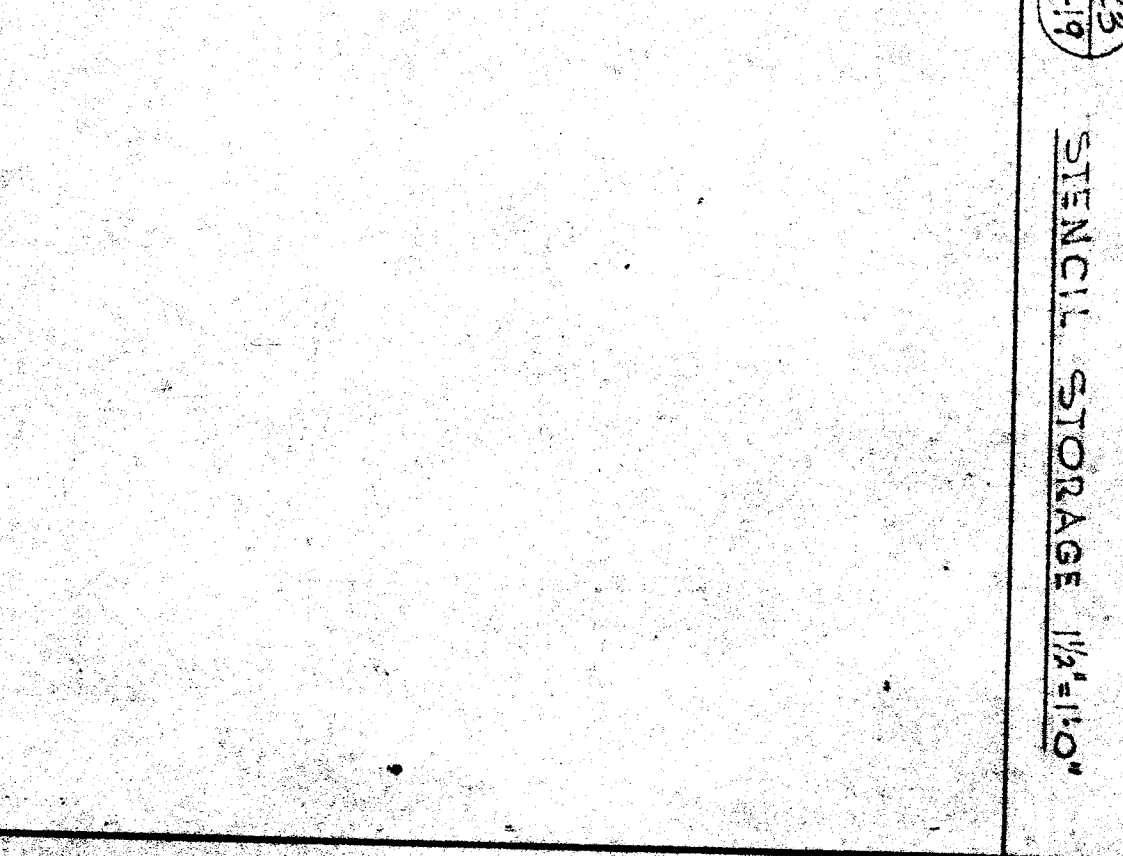
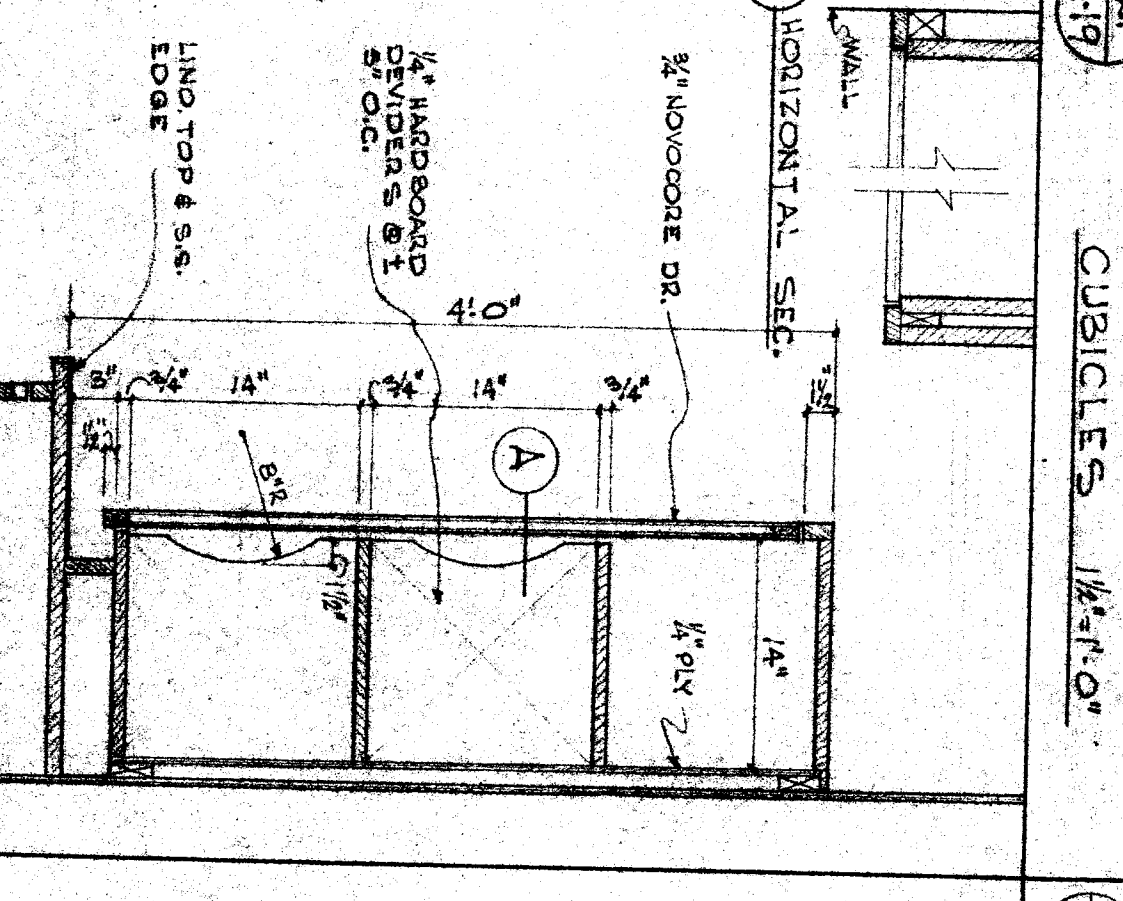
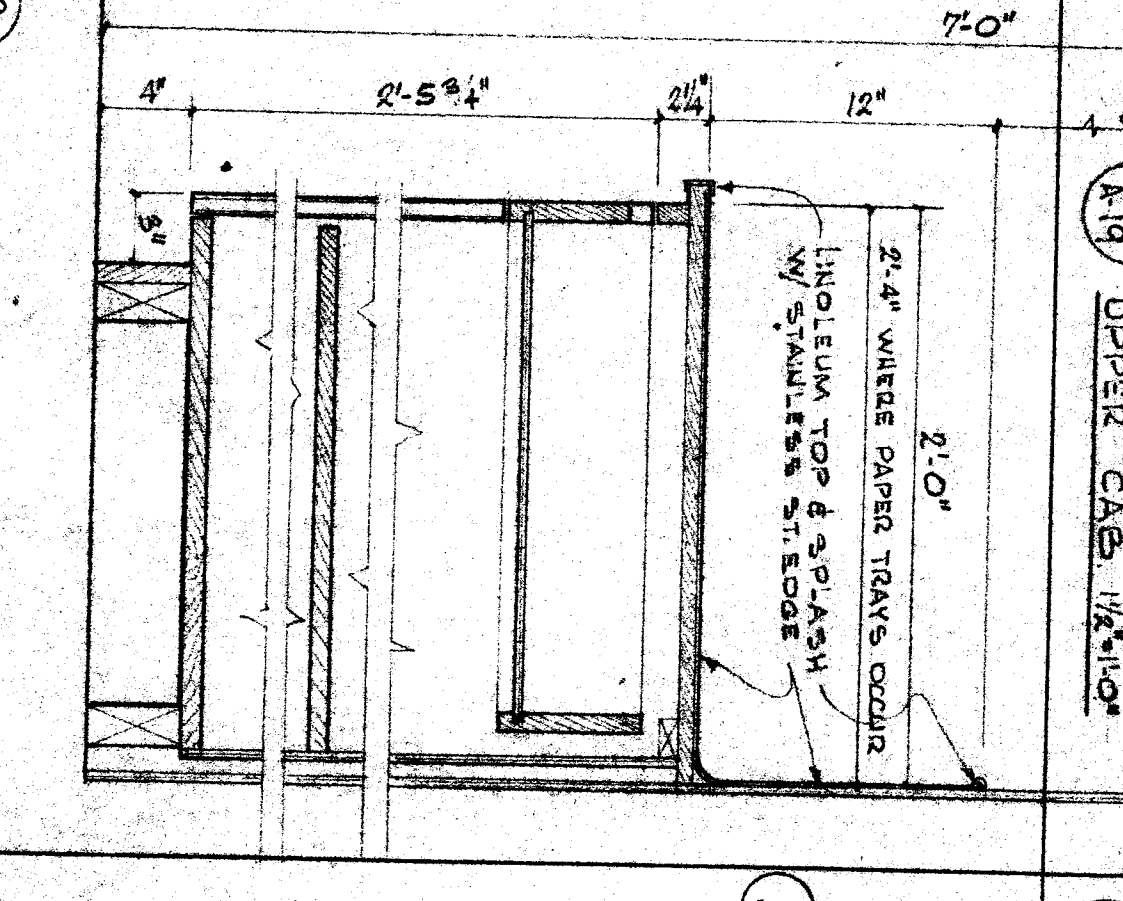
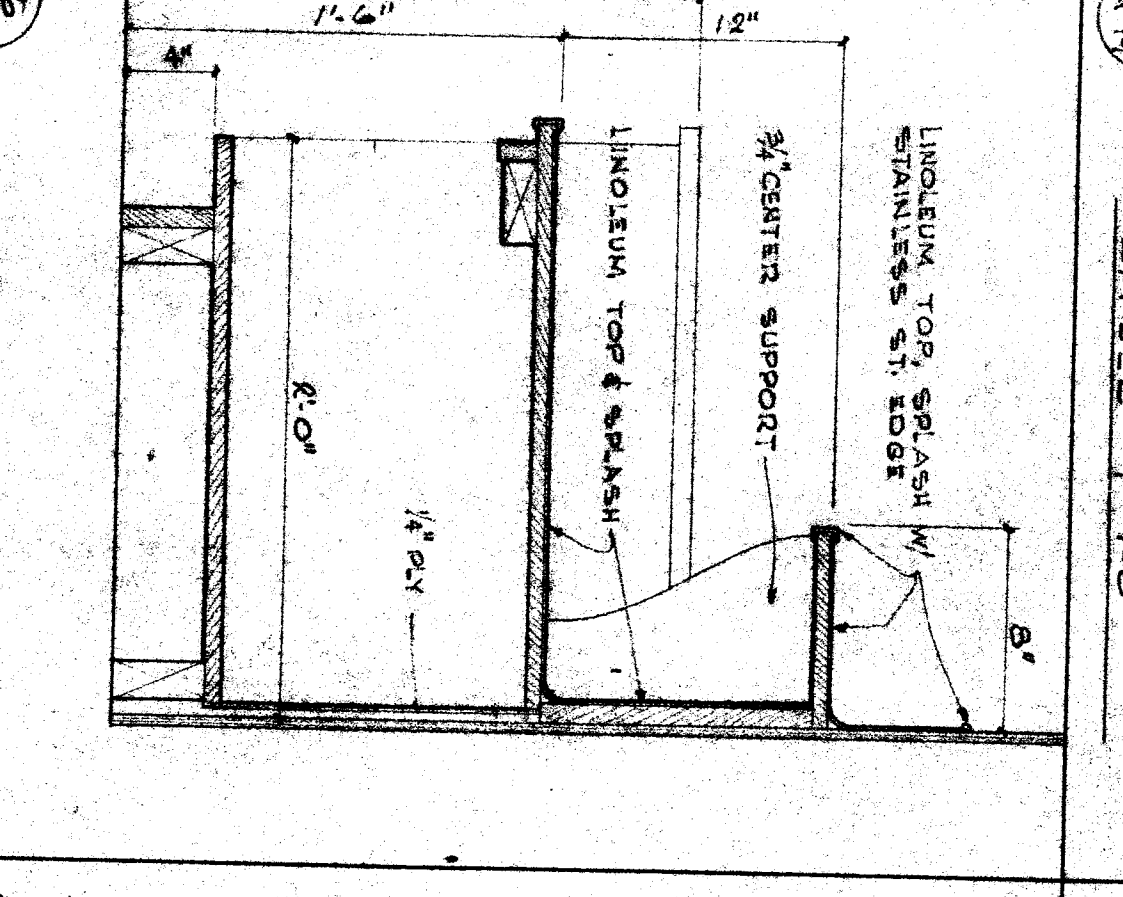
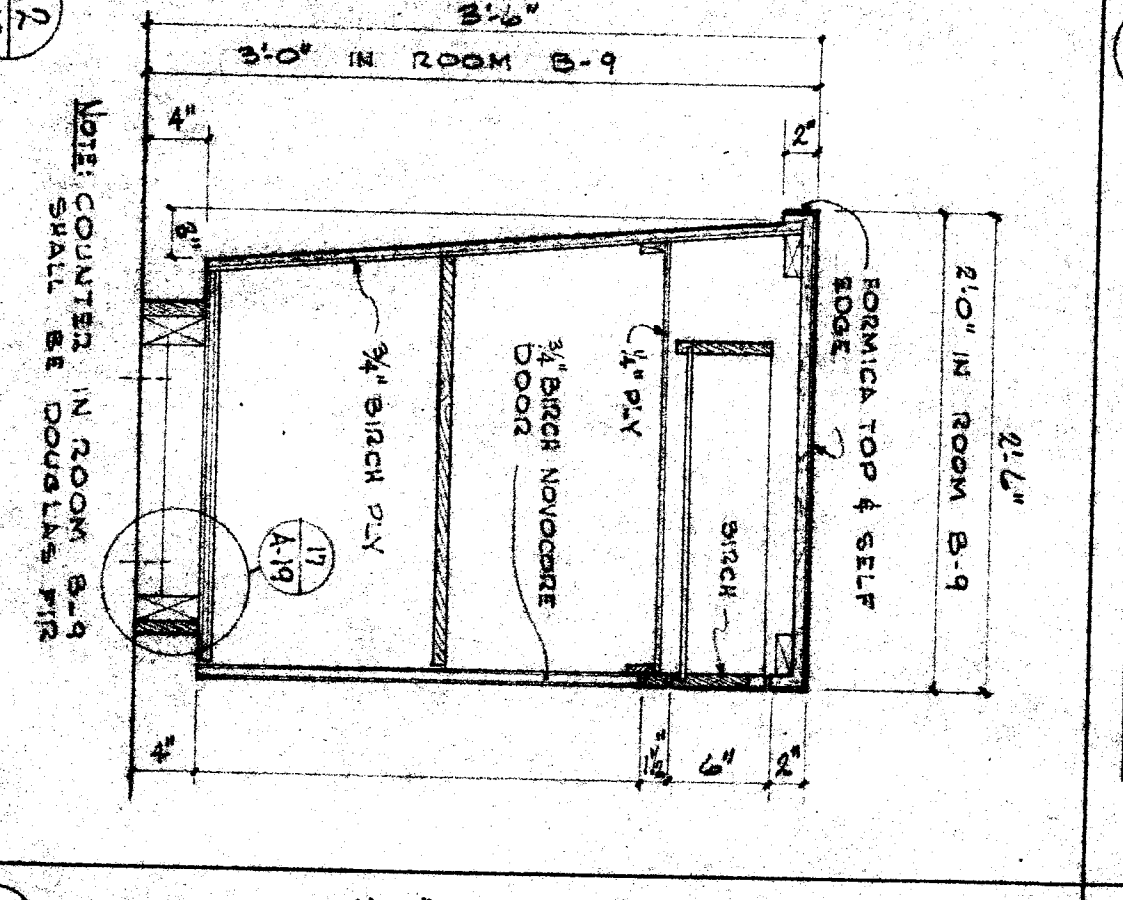
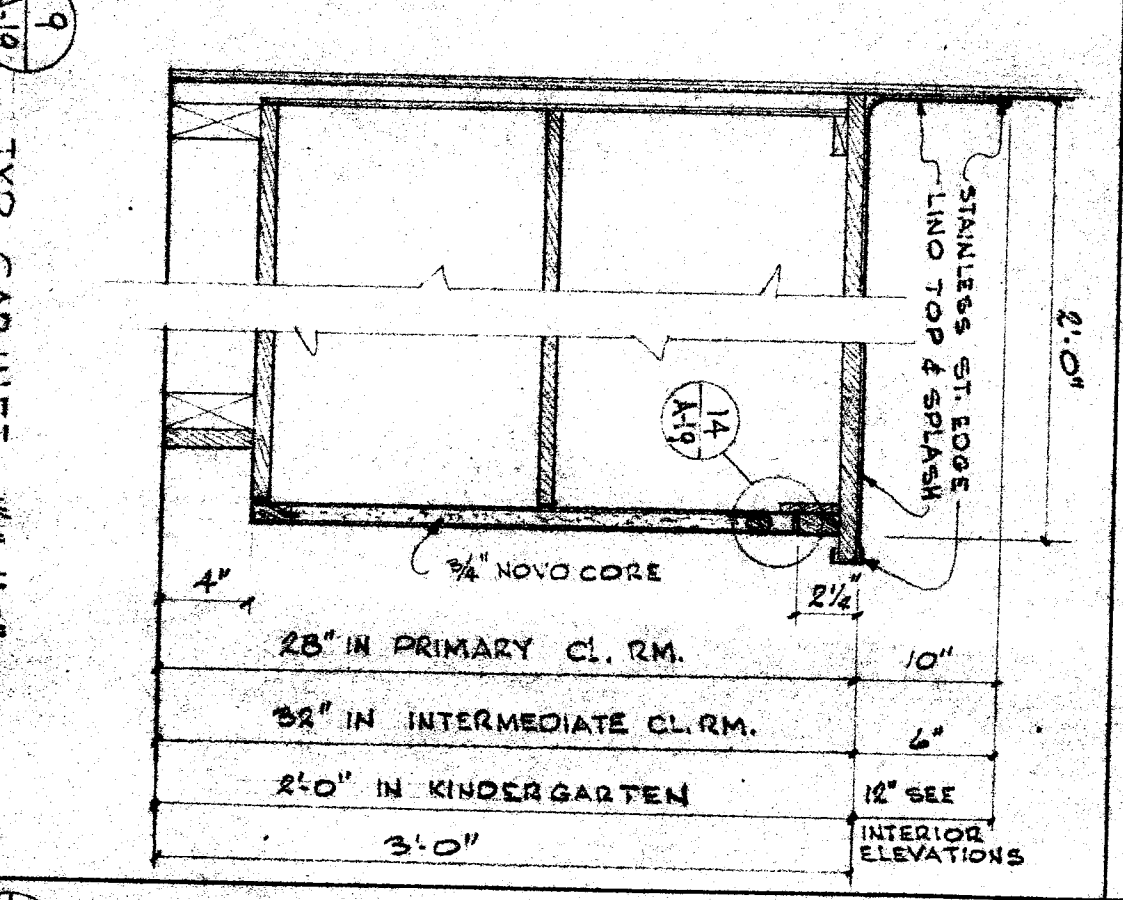
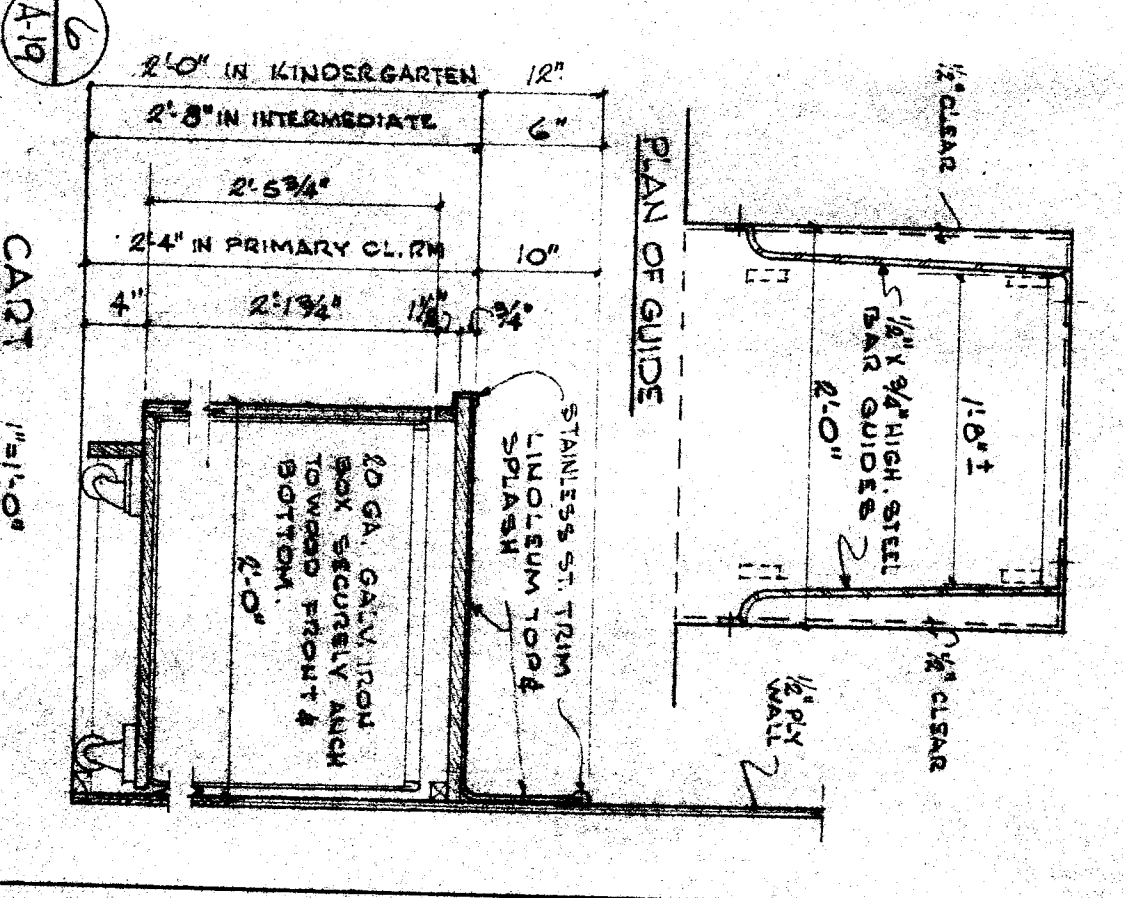
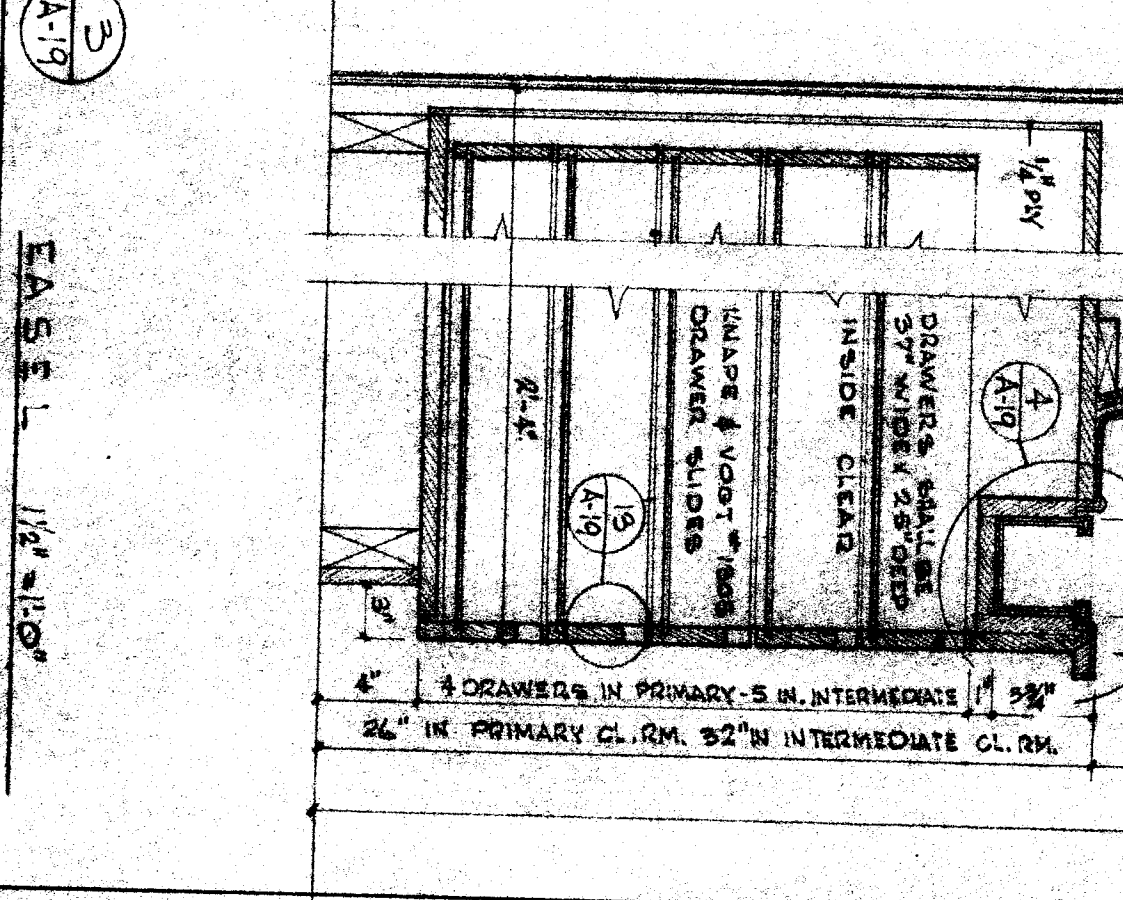
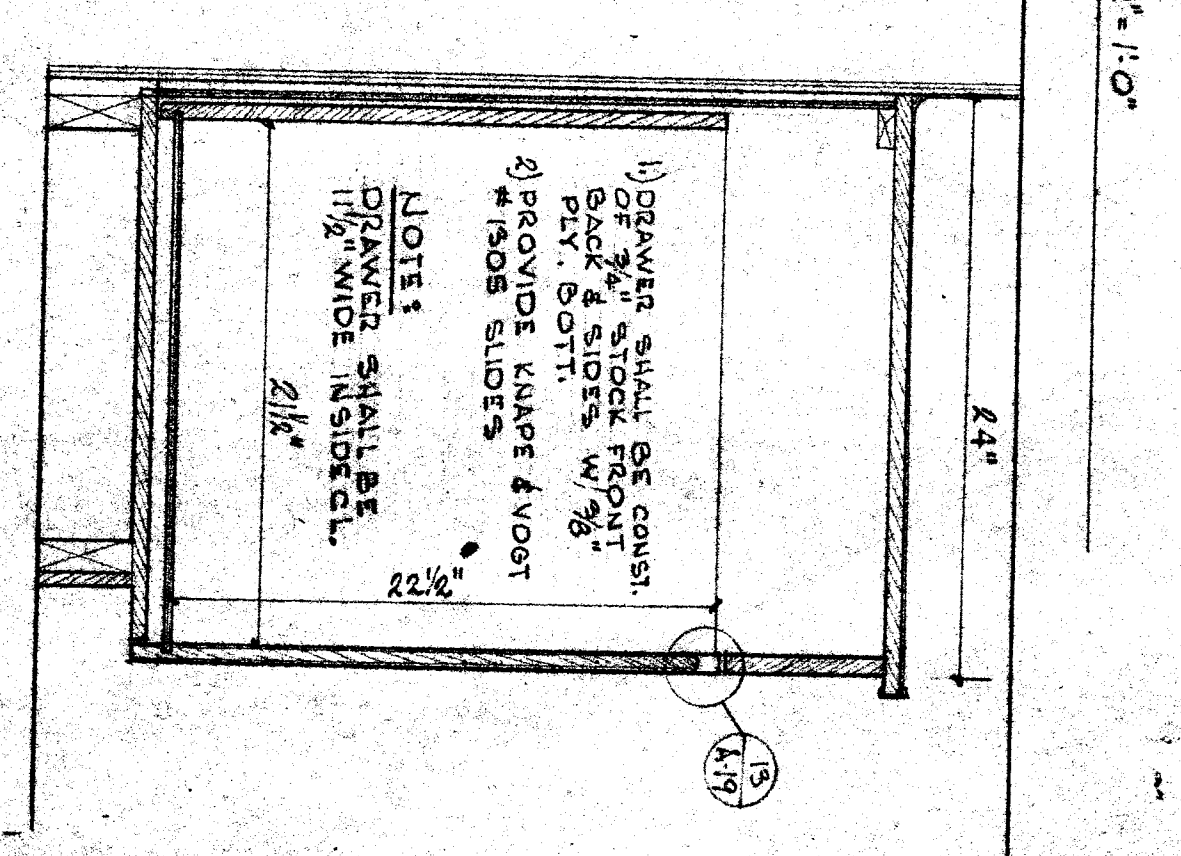
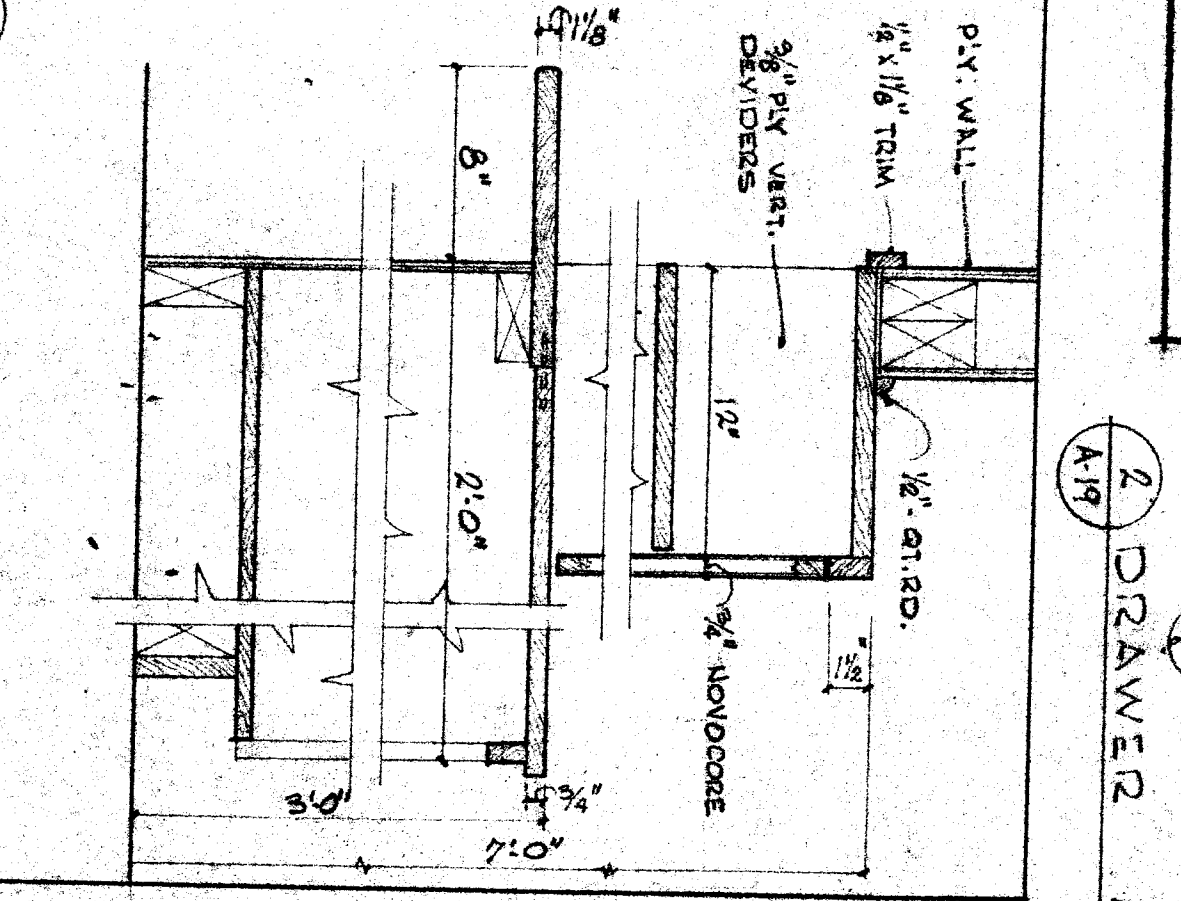
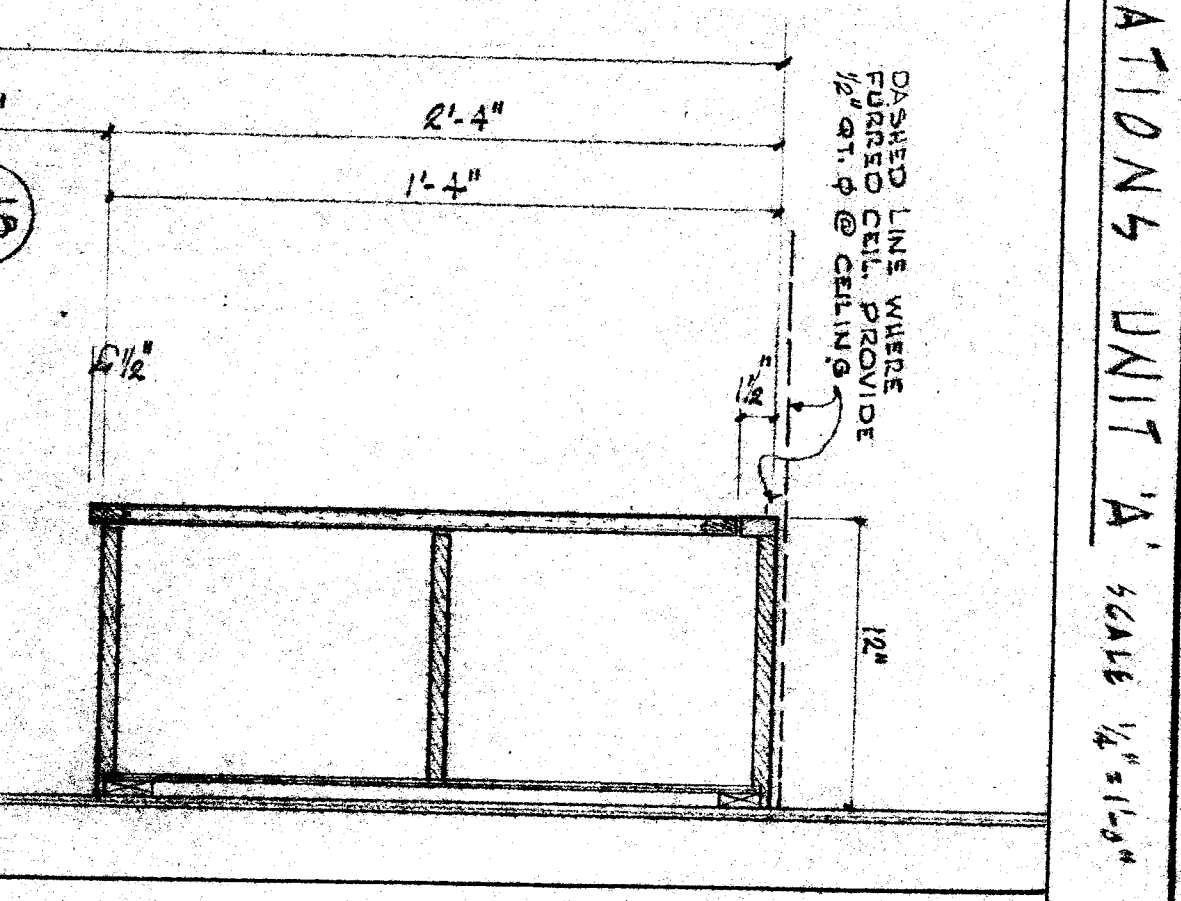
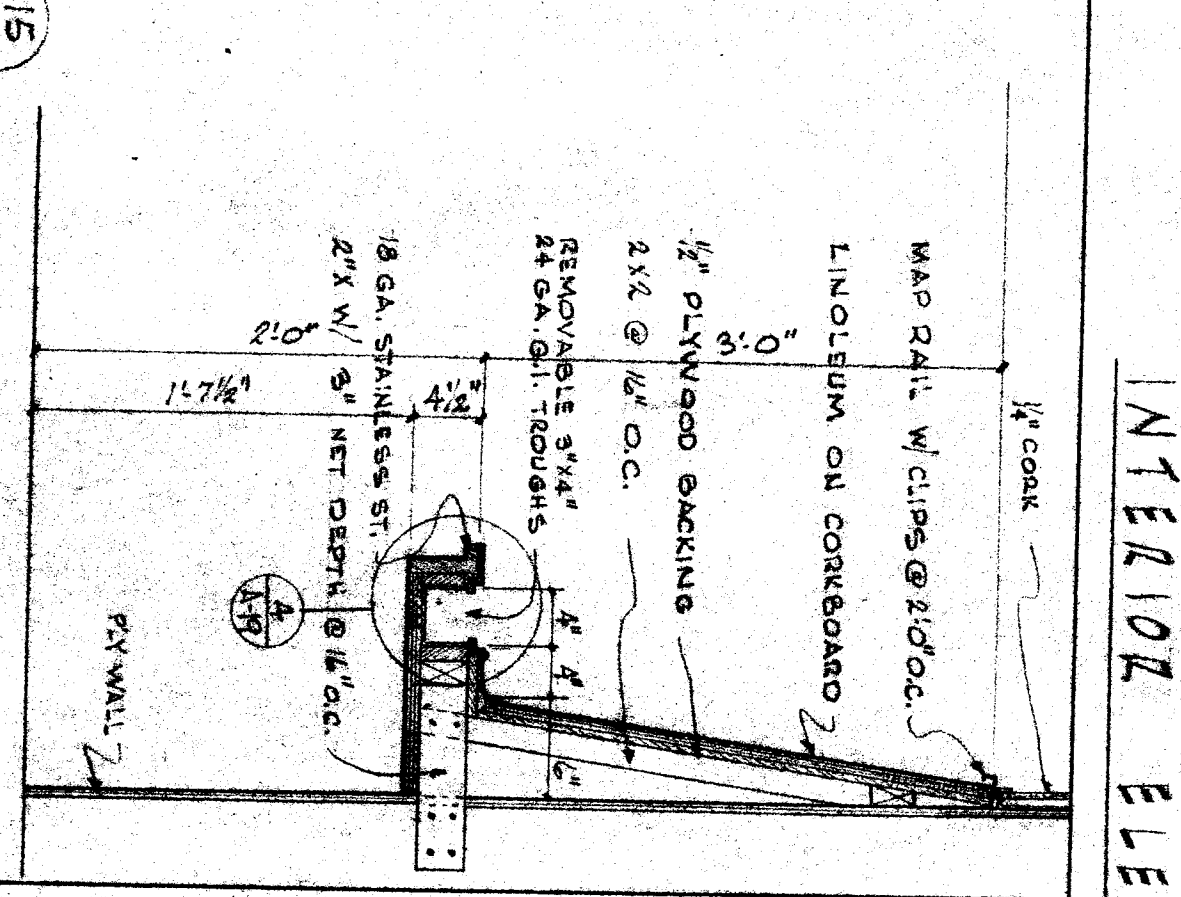
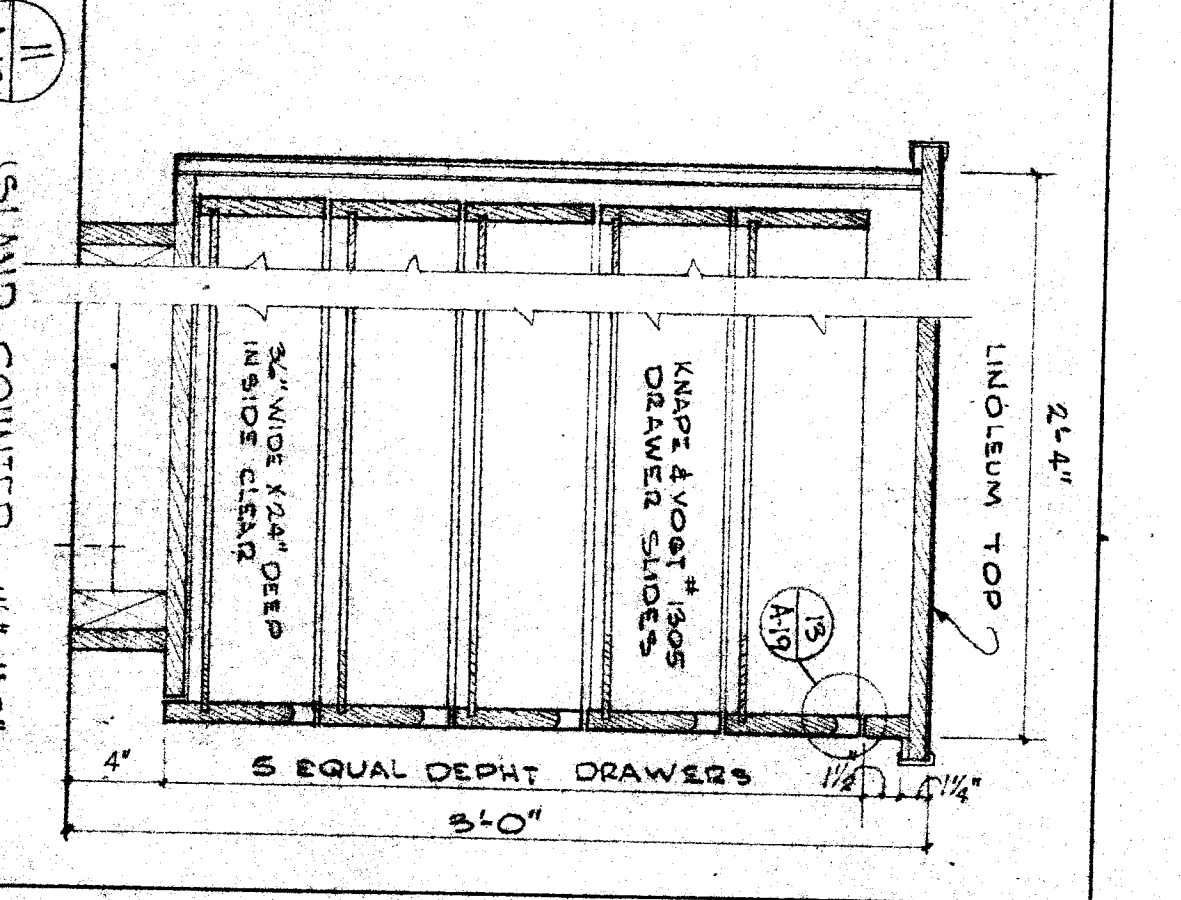
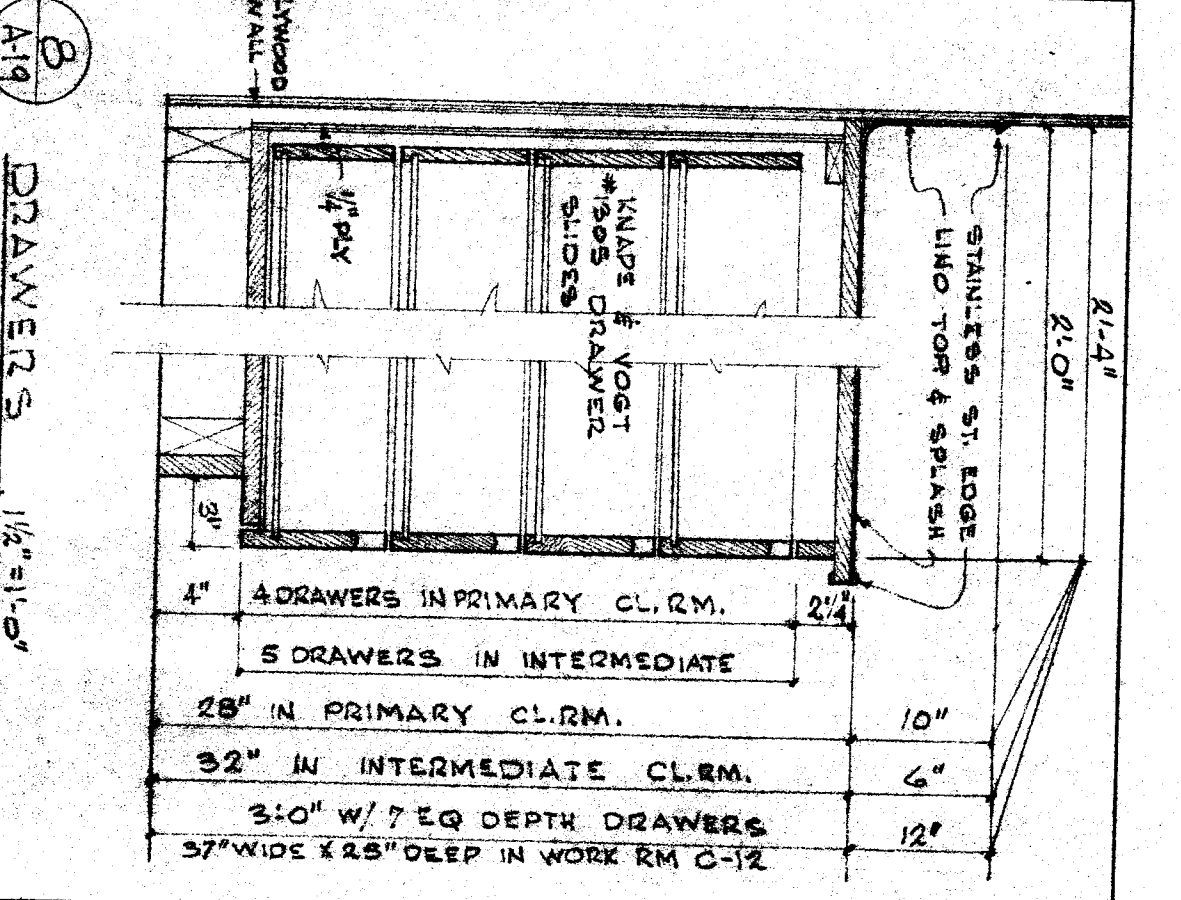
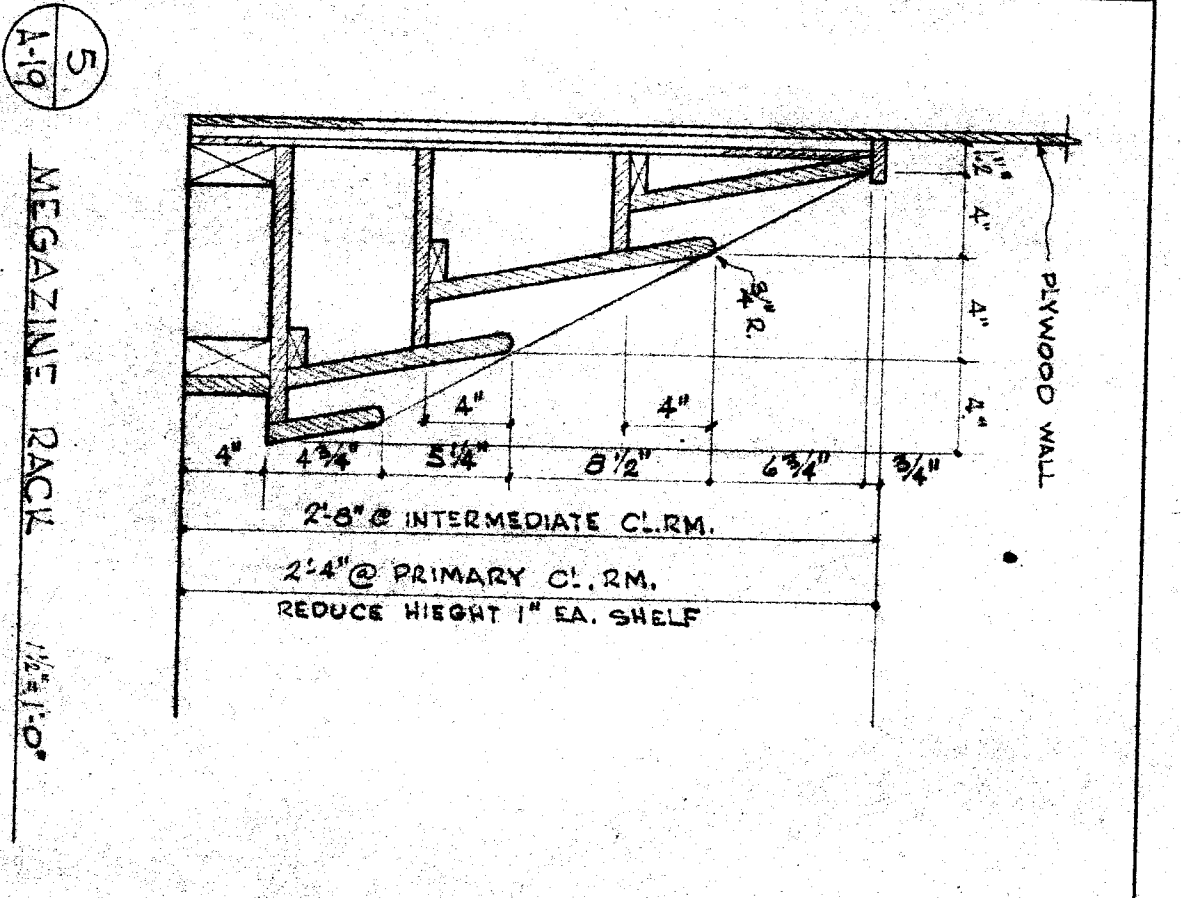
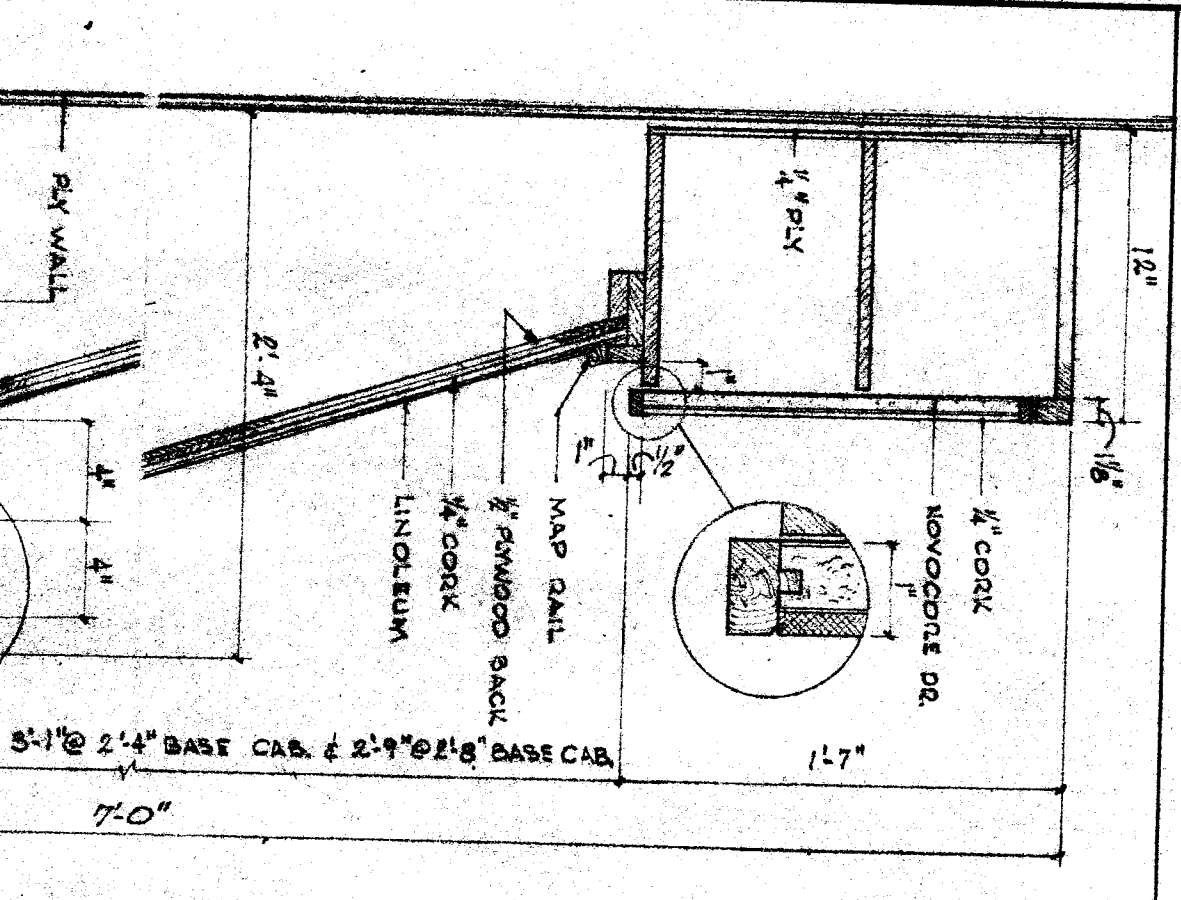


INTERIOR ELEVATIONS UNIT 'A' SCALE 1/2" = 1'-0"



OFFICE OF SUPERINTENDENT OF SCHOOLS
 APPROVED DATE

STATE OF CALIFORNIA
 DEPARTMENT OF PUBLIC WORKS
 DIVISION OF ARCHITECTURE

BAKERSFIELD CITY SCHOOL DIST.
 BAKERSFIELD, CALIFORNIA
 BOARD OF EDUCATION

APPROVED DATE

REVISIONS

DATE

DRAWN BY
 CHECKED BY
 ERNEST L. MCCOY A. I. A. ARCHITECT

BENTON PARK SCHOOL
 WILSON ROAD & NINTH STREET
 BAKERSFIELD, CALIFORNIA

