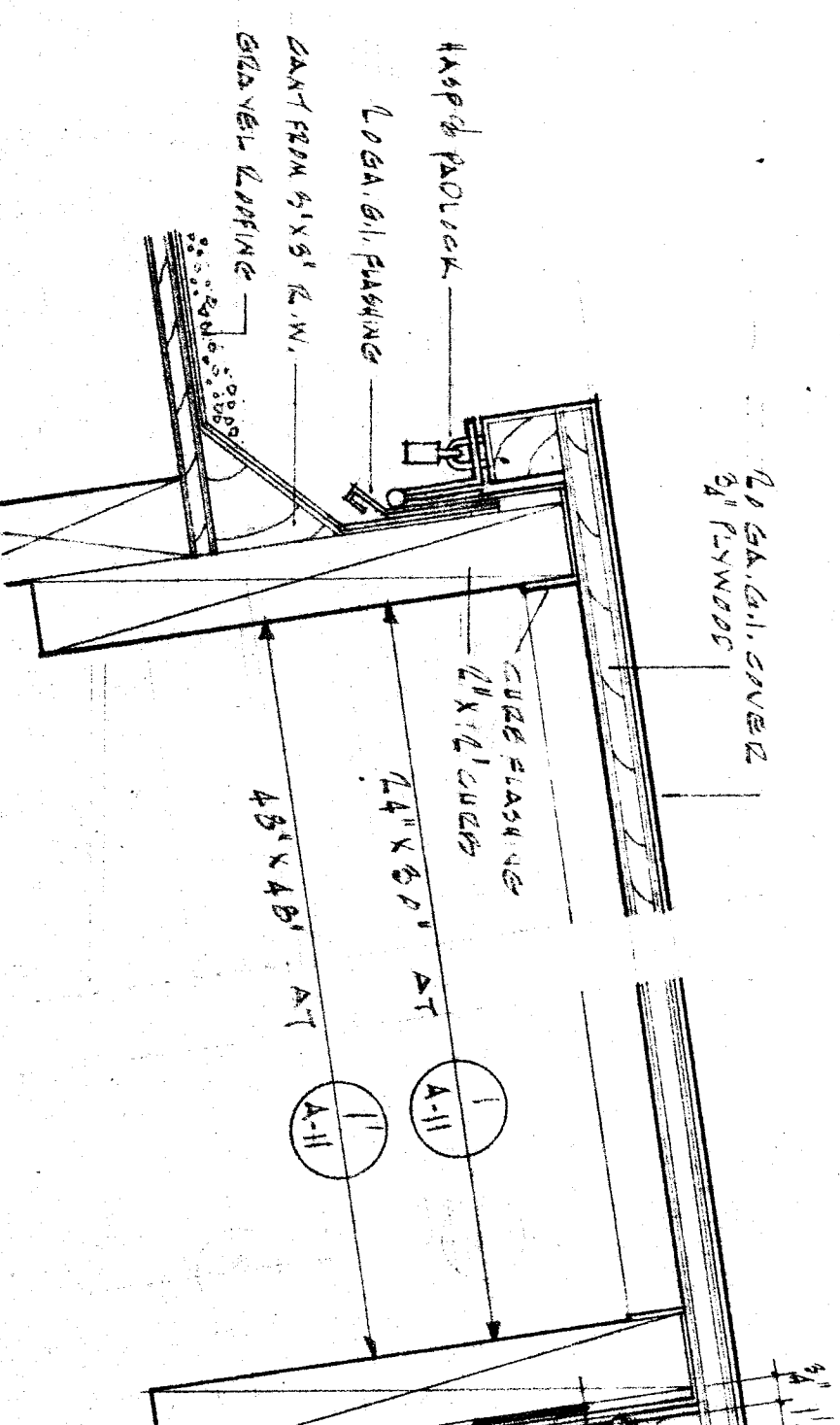
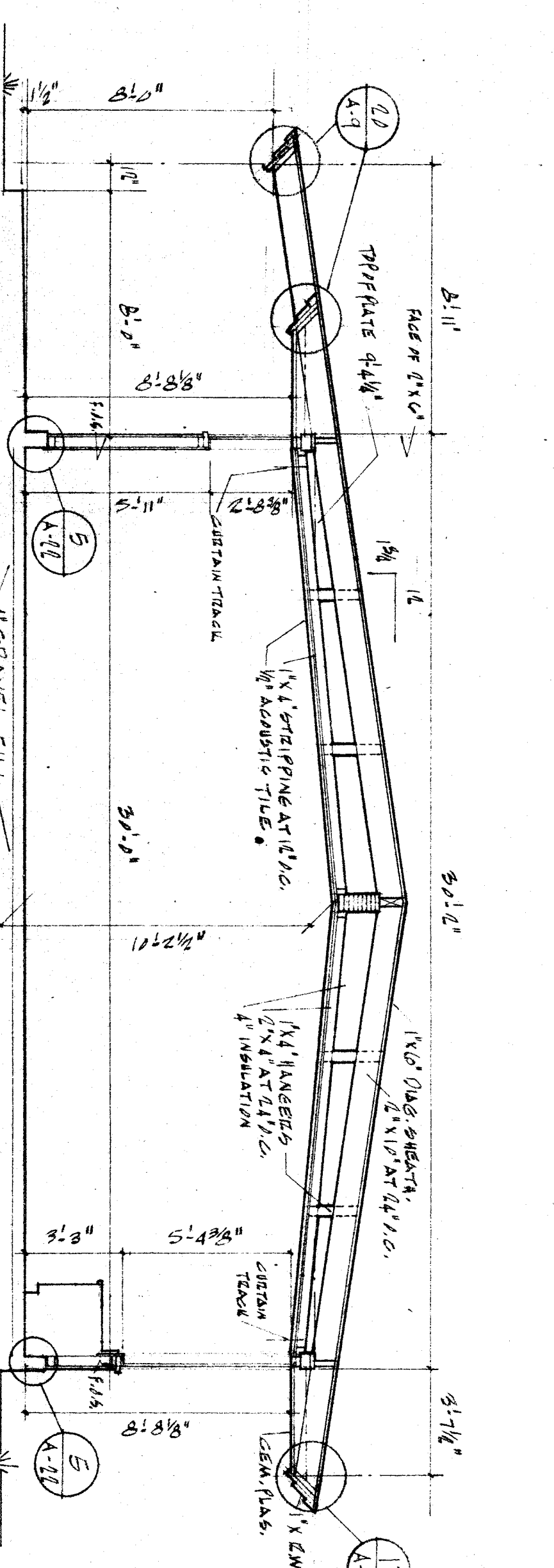
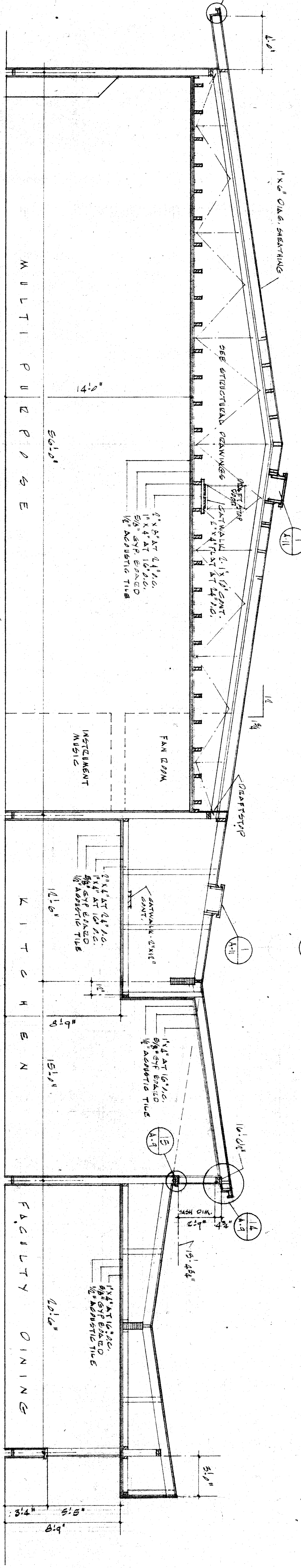


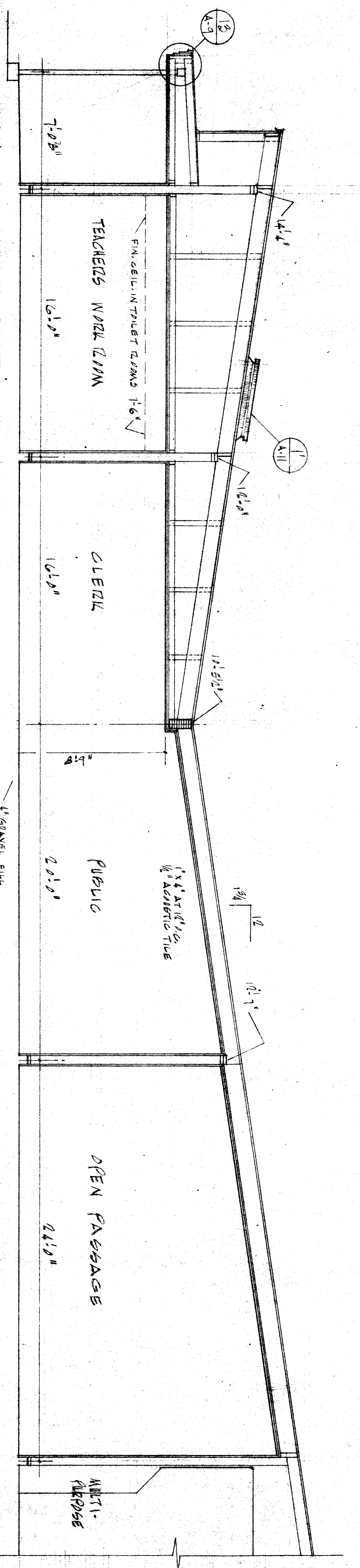
1 TYPICAL CLASSROOM & KINDERGARTEN SECTION - 8'11 1/2"



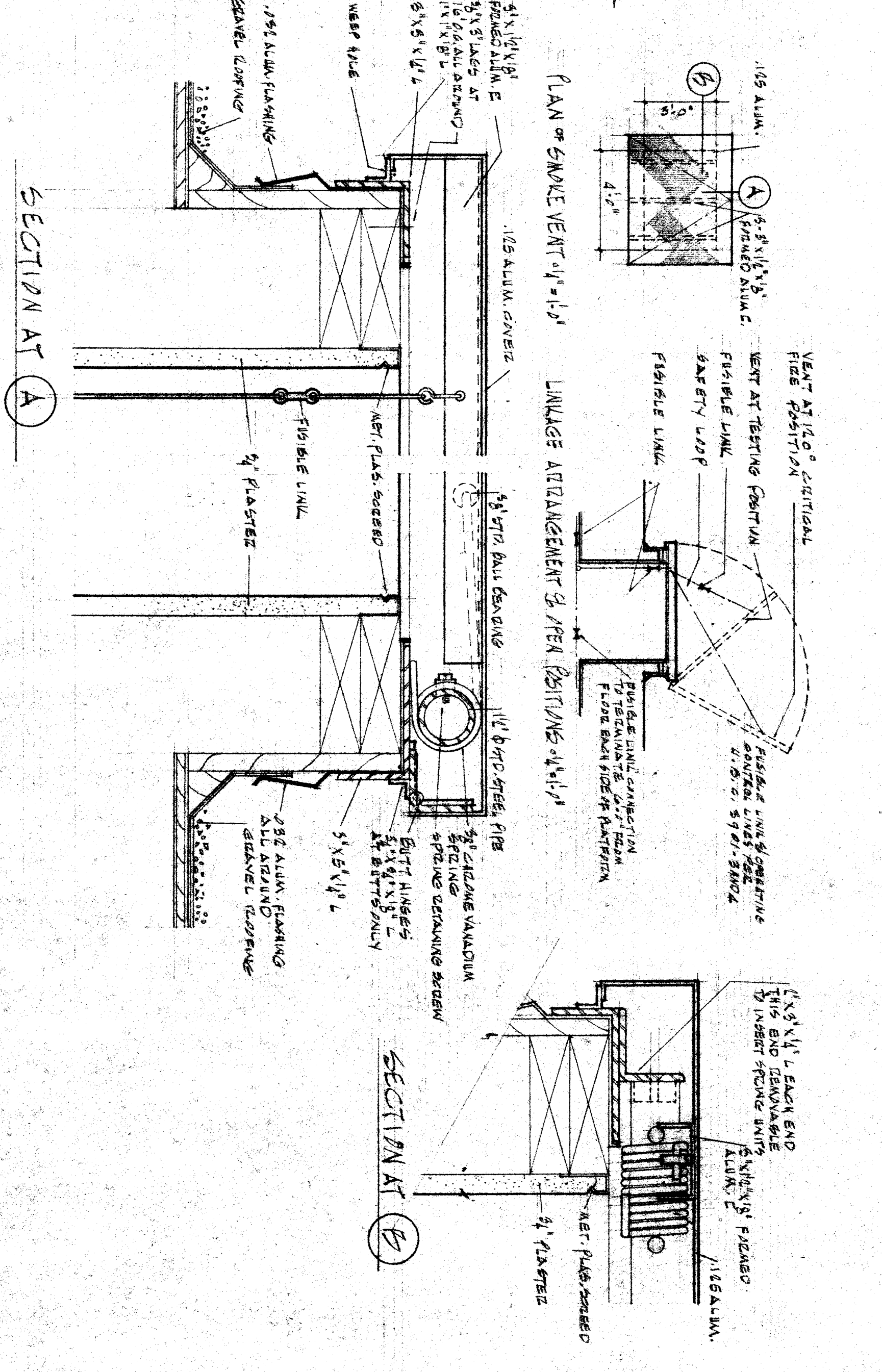
2 TYPICAL SECTION MULTIPURPOSE, KITCHEN & FACULTY DINING - 11'1 1/2"



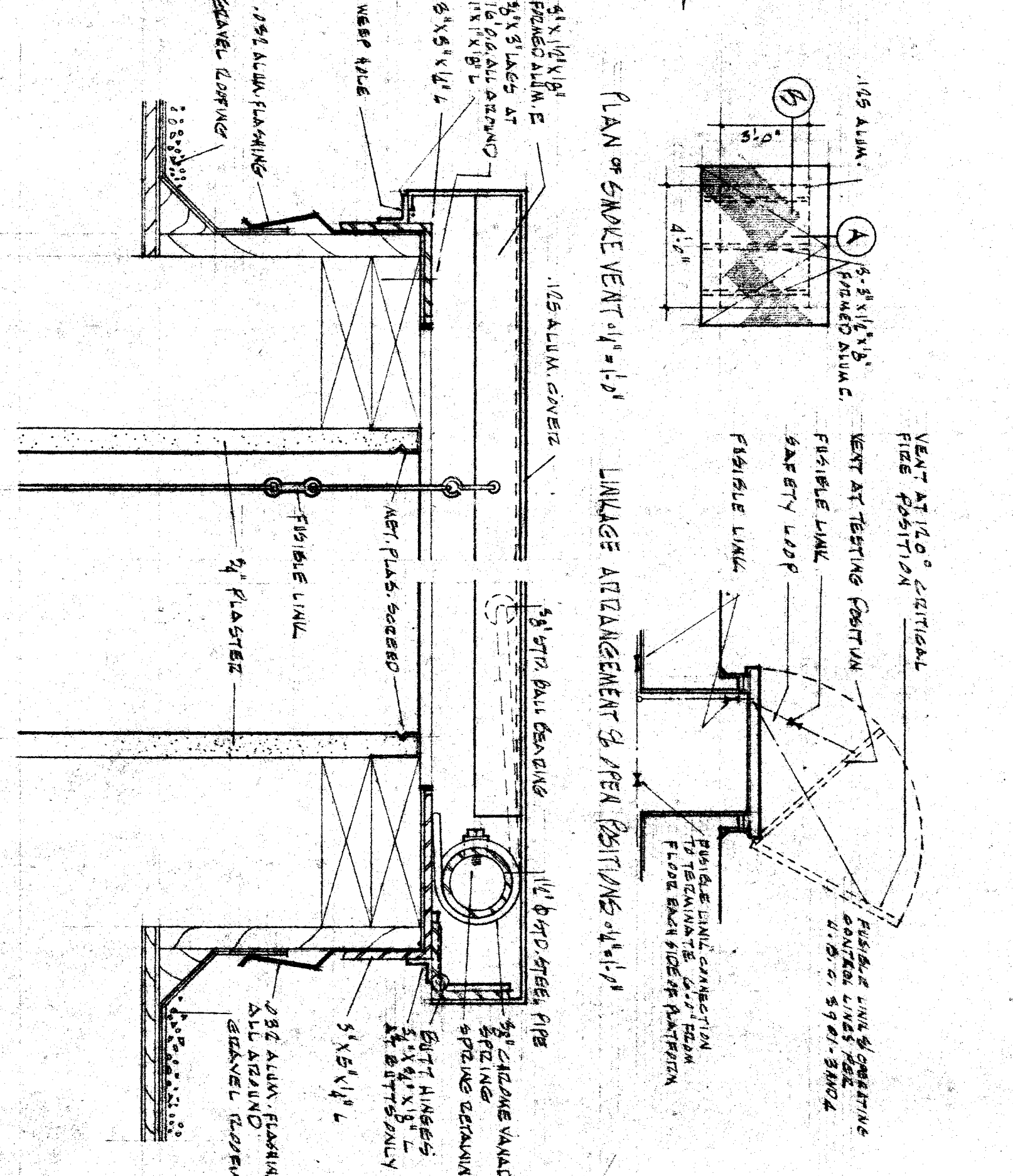
3 TYPICAL ADMINISTRATION SECTION - 11'1 1/2"



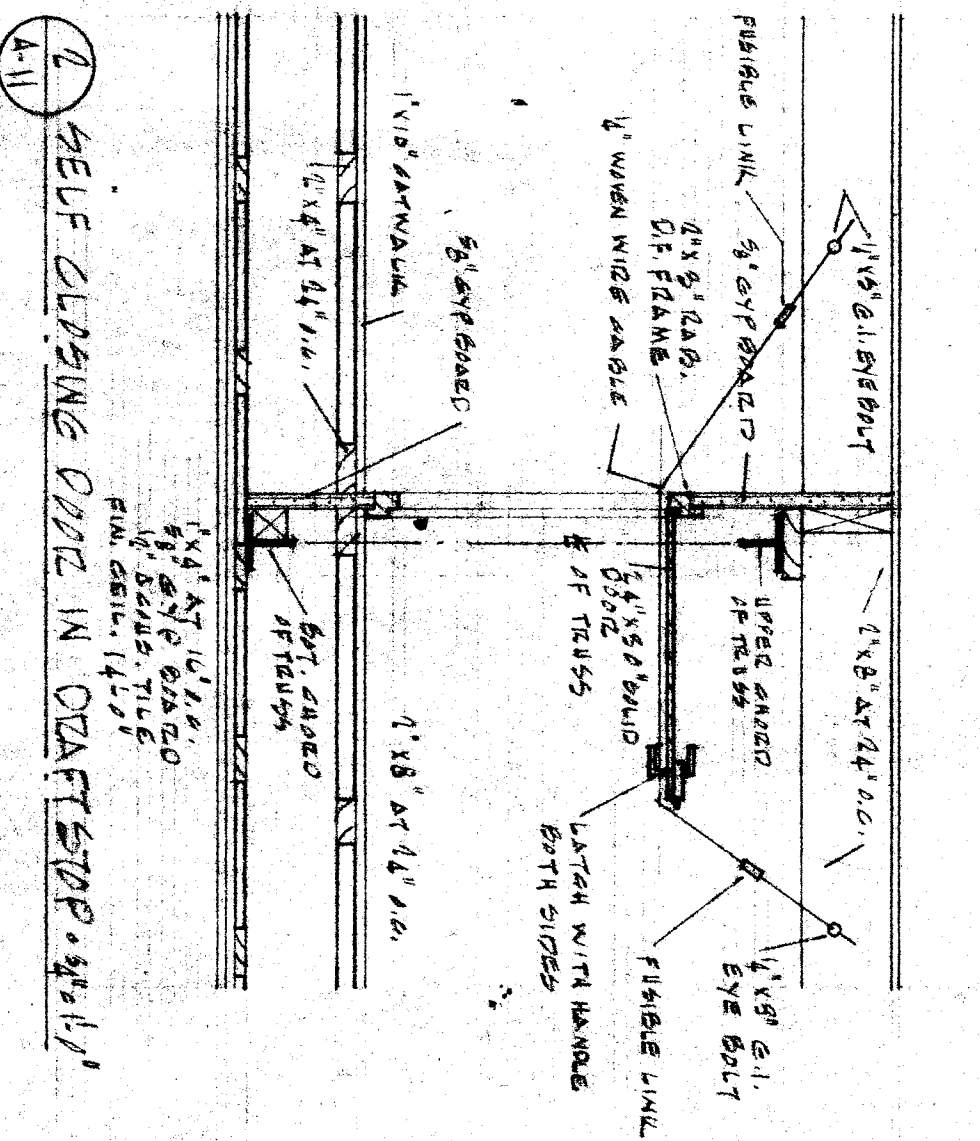
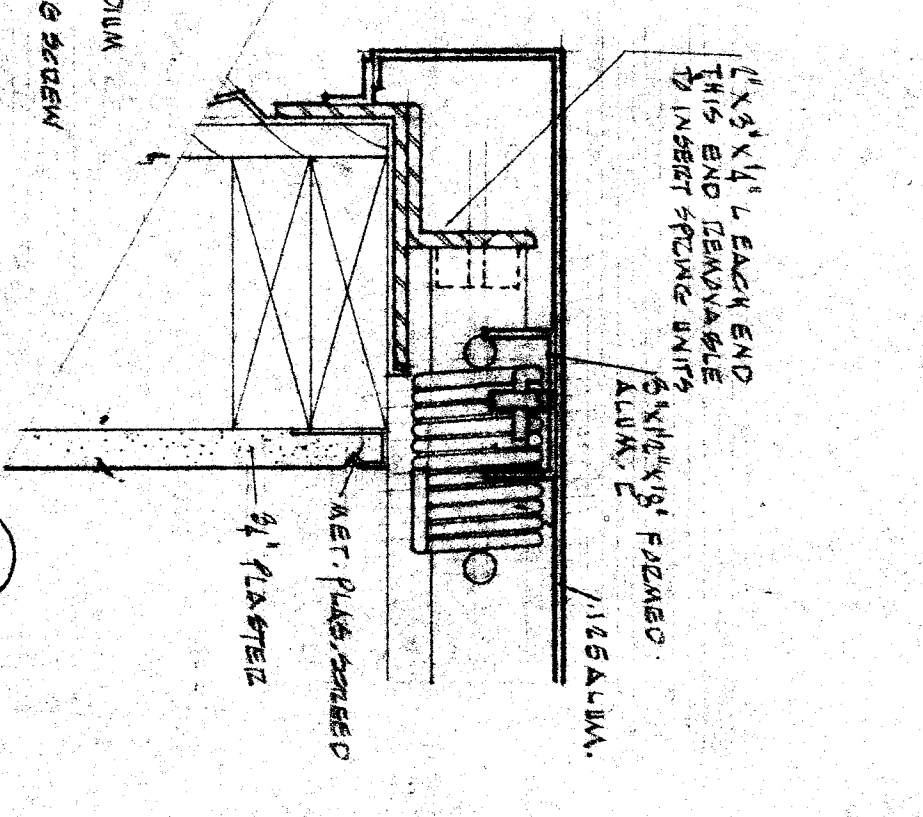
4 PLAN OF SMOKE VENT - 11'1 1/2"



5 SECTION AT A



6 SECTION AT B



OFFICE OF SUPERINTENDENT OF SCHOOLS  
 APPROVED DATE

STATE OF CALIFORNIA  
 DEPARTMENT OF PUBLIC WORKS  
 DIVISION OF ARCHITECTURE

BAKERSFIELD CITY SCHOOL DISTRICT  
 BAKERSFIELD, CALIFORNIA  
 BOARD OF EDUCATION

APPROVED	DATE	NAME	DATE	NAME

SECTION 5 - ADMINISTRATION, MULTIPURPOSE & TYPICAL

DATE DRAWN CHECKED  
 ERNEST L. MCCOY A. I. A.  
 ARCHITECT

BENTON PARK SCHOOL  
 WILSON ROAD & BENTON STREETS  
 BAKERSFIELD, CALIFORNIA