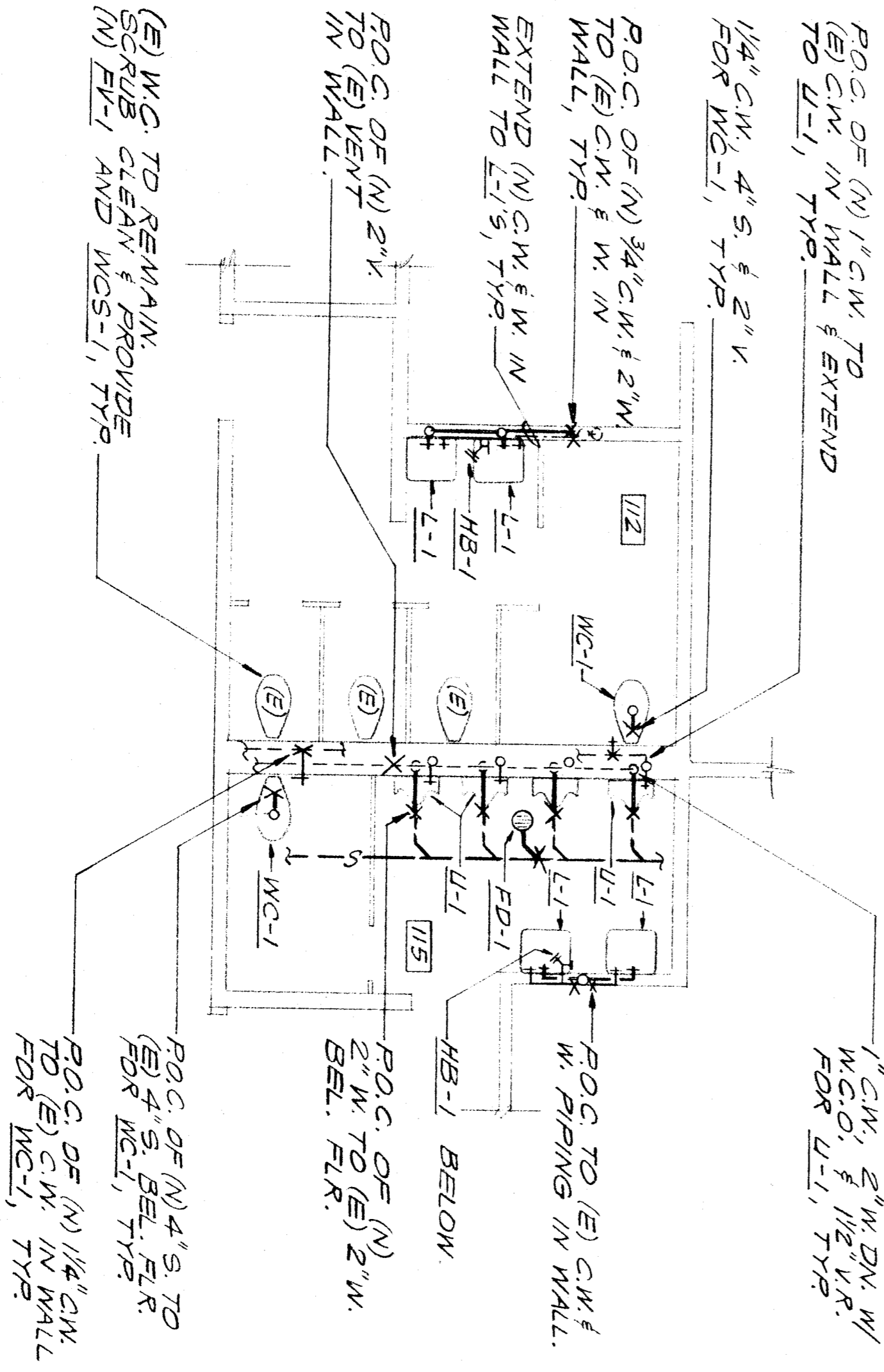
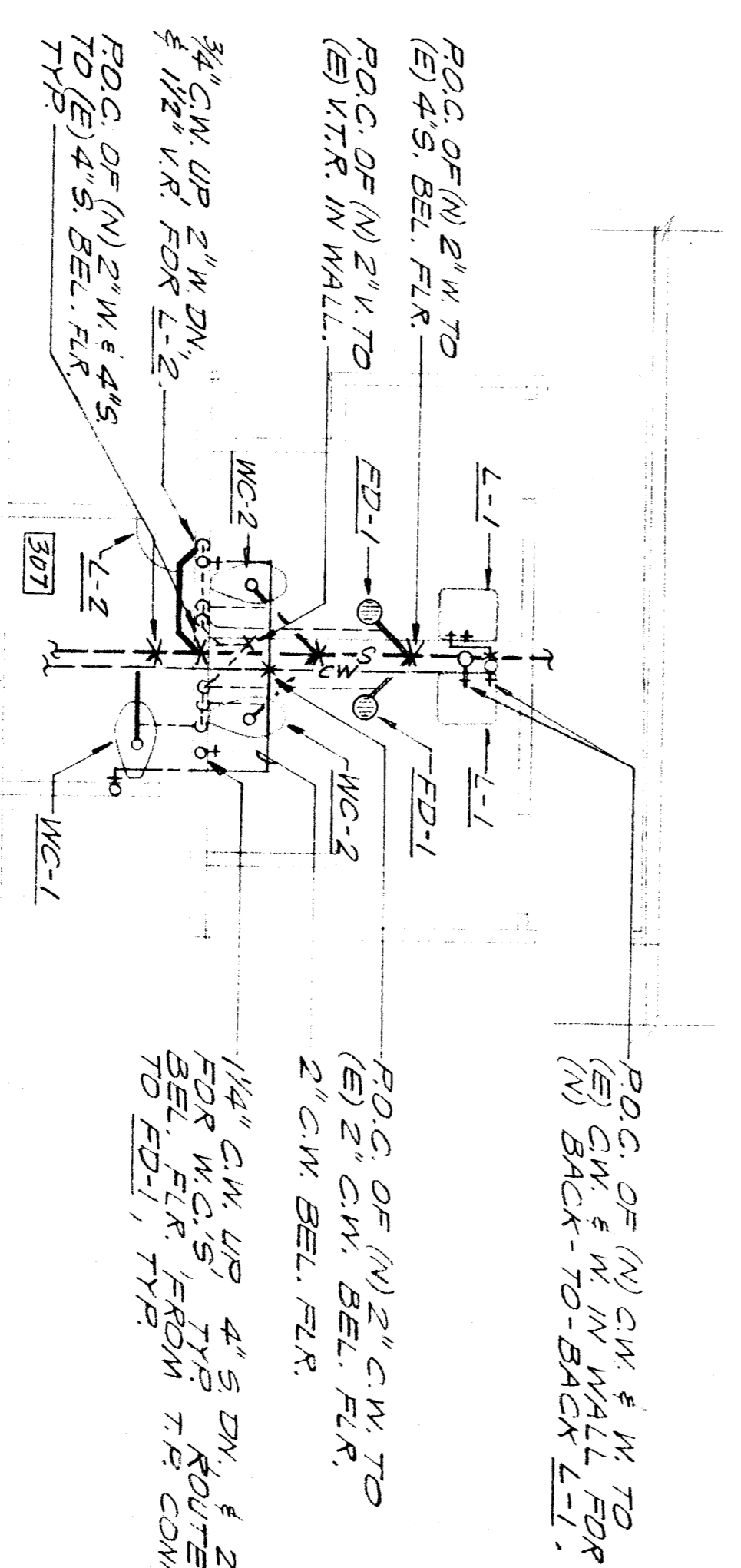


CONDENSATE DRAIN CONNECTION
SCALE: NONE



DETAILED PLUMBING REMODEL PLAN - MULTI-PURPOSE
SCALE: 1/4" = 1'-0"

MARK	FIXTURE	CONNECTION SIZES			DESCRIPTION
		S/W	V.	C.W. H.W.	
LT-3	LAVATORY TRIM	2"	-	1/2"	TWO CHICAGO #65-261 PATENTS, AND AMERICAN STANDARD #4362-026 GRID DRAIN.
ST-2	SINK TRIM	2"	1/1/2"	1/2"	CHICAGO #2300-B SINGLE LEVER FAUCET AND AMERICAN STANDARD #4331-010 BASIN STRAINER.
ST-3	SINK TRIM	2"	1/2"	1/2"	CHICAGO #748-665-TRC RUNNING BRIBER, CHICAGO #3930-C OOSBROCK FAUCET, AND JUST #1-3595 SINK STRAINER. LOCATE BRIBER AT RIGHT FRONT (+16" MAX. TO CENTER OF BRIBER). LOCATE FAUCET AS LEFT REAR OF SINK.
SS-1	SERVICE SINK	3"	2"	1/2"	AMERICAN STANDARD "TIGERBALL" #741-000 WITH #715 STAINLESS CAST IRON WITH #715 STAINLESS GRID. #8344-111 WALL MOUNT POLISHED CHROME FAUCET WITH VACUUM BRAKER, STOPS, AND WALL BRACE. #7721-038 DRAIN, AND WITH STEEN-WILLIAMS #735 3/8" HOSE WITH WALL BRACKET.
DE-1	DRINKING FOUNTAIN TRIM	2"	1-1/2"	1/2"	HOSE #1411 BRAKER-TYPE WALL MOUNT CAST BRASS WITH TWO VANDALESCOPE BRIBERS AND PUSH-BUTTON VALVES, VANDAL RESISTANT BOTTOM PLATE, AND JAN R. SMITH #824-2 (OR ZIRN #2-1224) SUPPORT CARRIER.
DE-1	DRINKING FOUNTAIN TRIM	2"	1-1/2"	1/2"	TWO #652 BRIBER VALVES AND GRID DRAIN STRAINERS.
HB-1	HOSE BIBB	-	-	3/4"	CHICAGO #952 POLISHED CHROME WITH LOCKSHIELD, VACUUM BRAKER AND REMOVABLE TEE HANDLE.
FD-1	FLOOR DRAIN	2"	1-1/2"	1/2"	JAN R. SMITH #206-B-P (OR ZIRN #2-415-P) 1/2" SQUARE NICKEL BRONZE STRAINER AND TRAP PRIMER CONNECTION.



DETAILED PLUMBING REMODEL PLAN - KINDERGARTEN
SCALE: 1/4" = 1'-0"

MARK	FIXTURE	CONNECTION SIZES			DESCRIPTION
		S/W	V.	C.W. H.W.	
WC-1	WATER CLOSET	4"	2"	1"	AMERICAN STANDARD ELONGATED WATER CLOSING VALVE. #16-1/8" UNIVERSAL BERGERT EL 1.6" #2305-100 WITH SOFT CUSH #2-600XAL-MS1) FLUSH VALVE. #2305-100 WITH #2305-C/S OVEN-FRONT SERV. TRAP PRIMER CONNECTION WHERE SHOWN ON DRAWINGS.
WC-2	WATER CLOSET	4"	2"	1"	AMERICAN STANDARD ELONGATED WATER CLOSING VALVE. #16-1/8" UNIVERSAL BERGERT EL 1.6" #2305-100 WITH SOFT CUSH #2-600XAL-MS1) FLUSH VALVE. #2305-100 WITH #2305-C/S OVEN-FRONT SERV. TRAP PRIMER CONNECTION WHERE SHOWN ON DRAWINGS.
U-1	URINAL	2"	1-1/2"	3/4"	AMERICAN STANDARD "AHLEROCK" #6541-132 WITH #047068-0070A. #1111 (OR ZIRN, #2300XAL-MS1) FLUSH VALVE. #1111 (OR ZIRN, #2300XAL-MS1) FLUSH VALVE. #95CC/S OPEN-FRONT SERV. TRAP PRIMER CONNECTION WHERE SHOWN ON DRAWINGS.
FW-1	FLUSH VALVE	-	-	1"	AMERICAN STANDARD "AHLEROCK" #6541-132 WITH #047068-0070A. #1111 (OR ZIRN, #2300XAL-MS1) FLUSH VALVE. #1111 (OR ZIRN, #2300XAL-MS1) FLUSH VALVE. #95CC/S OPEN-FRONT SERV. TRAP PRIMER CONNECTION WHERE SHOWN ON DRAWINGS.
WC-1	WATER CLOSET	-	-	-	AMERICAN STANDARD "AHLEROCK" #6541-132 WITH #047068-0070A. #1111 (OR ZIRN, #2300XAL-MS1) FLUSH VALVE. #1111 (OR ZIRN, #2300XAL-MS1) FLUSH VALVE. #95CC/S OPEN-FRONT SERV. TRAP PRIMER CONNECTION WHERE SHOWN ON DRAWINGS.
LC-1	LAVATORY	2"	1-1/2"	1/2"	AMERICAN STANDARD "MINNETTE" #0451-021, MODIFIED WITH SINGLE FAUCET HOLE AT CENTER WITH #2411-015 GRID DRAIN. CHICAGO #333-336-VFC #411-2 (OR ZIRN #1245-5) SUPPORT CARRIER.
LC-2	LAVATORY	2"	1-1/2"	1/2"	AMERICAN STANDARD "MINNETTE" #0451-021, MODIFIED WITH SINGLE FAUCET HOLE AT CENTER WITH #2411-015 GRID DRAIN. CHICAGO #333-336-VFC #411-2 (OR ZIRN #1245-5) SUPPORT CARRIER.
LC-1	LAVATORY TRIM	2"	1/2"	-	CHICAGO #335-012-VFC "TITE-TAP" SLOW-CLOSING FAUCET, AMERICAN STANDARD #2411-015 GRID DRAIN AND JAN R. SMITH #720 SUPPORT CARRIER. ADJUST FAUCET TO STAY OPEN FOR 10 SECONDS.
LC-2	LAVATORY TRIM	2"	1/2"	-	CHICAGO #335-012-VFC "TITE-TAP" SLOW-CLOSING FAUCET, AMERICAN STANDARD #2411-015 GRID DRAIN AND JAN R. SMITH #720 SUPPORT CARRIER. ADJUST FAUCET TO STAY OPEN FOR 10 SECONDS.
LC-1	LAVATORY TRIM	2"	1/2"	-	CHICAGO #335-012-VFC "TITE-TAP" SLOW-CLOSING FAUCET, AMERICAN STANDARD #2411-015 GRID DRAIN AND JAN R. SMITH #720 SUPPORT CARRIER. ADJUST FAUCET TO STAY OPEN FOR 10 SECONDS.
LC-2	LAVATORY TRIM	2"	1/2"	-	CHICAGO #335-012-VFC "TITE-TAP" SLOW-CLOSING FAUCET, AMERICAN STANDARD #2411-015 GRID DRAIN AND JAN R. SMITH #720 SUPPORT CARRIER. ADJUST FAUCET TO STAY OPEN FOR 10 SECONDS.



Lawrence M. Beckler ASSOCIATES
CONSULTING MECHANICAL ENGINEERS, INCORPORATED
1200 W. Shaw Avenue, Suite 2B
Bakersfield, CA 93311
(805) 242-8101 974279 FAX: 805-242-4317

9-SHEET
P3
Frank West Elementary School
Modernization
Bakersfield City School District

pechin associates architects aia
1400 easton drive suite 138
bakersfield, ca 93309 (805) 322-2021

DATE	ISSUE FOR
DATE	REVISION

THESE DRAWINGS, RELATED SPECIFICATIONS, IDEAS, DESIGNS, AND ARRANGEMENTS REPRESENTED THEREON ARE THE PROPERTY OF THE ARCHITECT. NO PART THEREOF SHALL BE COPIED, DISCLOSED TO OTHERS OR USED IN ANY MANNER WITHOUT THE WRITTEN PERMISSION OF THE ARCHITECT. VISUAL CONTACT WITH THESE DRAWINGS OR SPECIFICATIONS SHALL CONSTITUTE CONCLUSIVE EVIDENCE OF ACCEPTANCE OF THESE RESTRICTIONS.

WRITTEN DIMENSIONS ON THESE DRAWINGS SHALL HAVE PRECEDENCE OVER SCALE DIMENSIONS. CONTRACTORS SHALL VERIFY AND BE RESPONSIBLE FOR ALL DIMENSIONS AND CONDITIONS ON THE JOB AND THIS OFFICE MUST BE NOTIFIED OF ANY VARIATION FROM THE DIMENSIONS AND CONDITIONS SHOWN BY THESE DRAWINGS.

DETAILED SHOP DRAWINGS MUST BE SUBMITTED TO THIS OFFICE FOR REVIEW BEFORE PROCEEDING WITH THE FABRICATION OF ANY PRODUCT TO BE INCLUDED IN THIS PROJECT.