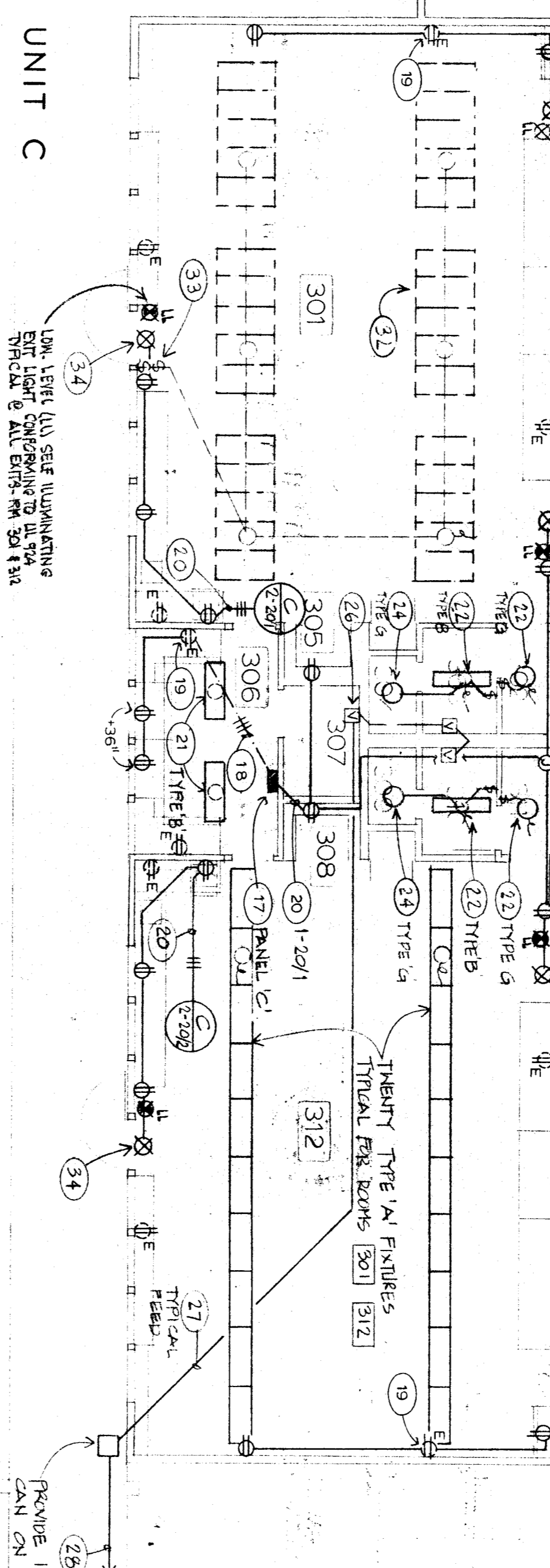


ELECTRICAL KEYNOTES - BUILDINGS C & D

- 1 EXISTING MAIN SWITCHBOARD ZINCO 720200V 575 AMP 400/208/120V FOR NEW PANEL D2.
- 2 EXISTING SUB-PANEL 'D' TO REMAIN. RE-ARRANGE ANY IDLE BREAKERS AS SPARES.
- 3 PROVIDE NEW SURFACE PANEL 'D2'. SEE ONE.
- 4 CONNECT EXISTING HAND DRIVER 200V @ 20 AMP EACH.
- 5 PICK-UP EXISTING 120V CIRCUIT AT EXISTING SWITCH. RUN WIREMOLD FOR EXPOSED RUN BETWEEN OUTLETS.
- 6 PROVIDE EXTENSION BOX AT EXISTING SWITCH TO ACCEPT WIREMOLD.
- 7 PROVIDE 180X AT CORNER OF CEILING/WALL.
- 8 RUN EXPOSED FEED IN WIREMOLD #7000 ALONG CORNER OF WALL/CILING.
- 9 HIGH DOWN IN EXISTING WALL WITH FEED TO NEW RECEPTACLES OR CUT AND PATCH.
- 10 RUN FEED CONCEALED IN CABINET STRUCTURE TO OTHER NEW RECEPTACLES. RUN IN CABINET WHERE POSSIBLE. VERIFY ROUTING OF FEED WITH ARCHITECT PRIOR TO INSTALLING.
- 11 RUN NEW FEED CONCEAL IN EXISTING WALL. CUT AND PATCH AS REQUIRED. WHERE MOUNTS MATCH WALL FINISH. TYPICAL.
- 12 REMOVE ALL EXISTING ELECTRICAL IN WAY OF NEW CONSTRUCTION. REPLACE US AND PROVIDE NEW SWITCHES AS SHOWN.
- 13 RECONNECT THE SWITCHES FROM TO SWITCHES WITH NEW WIRE.
- 14
- 15
- 16 EXISTING PULL BOX WITH 1 1/2" FROM EXISTING MAIN SWITCHBOARD 008.
- 17 EXISTING SUB-PANEL 'C'. USE EXISTING SPARE BREAKERS IF AVAILABLE OR PROVIDE 8 - 20 AMP CIR BREAKERS FOR NEW RECEPTACLES.
- 18 EXISTING SINGLE CIRCUIT HOMERUN. PULL IN CIRCUIT FOR NEW RECEPTACLES.
- 19 PICK UP EXISTING CIRCUIT AND EXTEND TO NEW OUTLETS. RUN NEW FEED CONCEAL IN WALL. CUT AND PATCH WALL AS REQUIRED.
- 20 NEW HOMERUN. USE WIREMOLD #7000 FOR EXPOSED RUNS. VERIFY WITH ARCHITECT FOR ALL RUNS PRIOR TO INSTALLATION. PROVIDE NEW 20A CIRCUIT BREAKERS AS REQUIRED.
- 21 REPLACE EXISTING FIXTURES WITH NEW TYPE. REMOVE AND RECONNECT TO SAME SWITCHED CEILING AND RECONNECT TO EXISTING ORIENTED OPERATE. VERIFY THE EXISTING PATCH. REPAIR CEILING WHERE REQUIRED TO MATCH EXISTING CONDITIONS.
- 22 5/8" X 1/2" TYPE 11. EXCEPT CONNECT TO A NEW WALL SWITCH AS SHOWN.
- 23 REMOVE EXISTING LIGHT FIXTURES. REMOVE EXISTING CIRCUIT FOR NEW FIXTURES. THERE ARE TWO EXISTING 20 AMP CIRCUITS FOR THE NEW EXISTING LIGHT FIXTURES. RUN A SINGLE 20 AMP CIRCUIT PER CLASSROOM. REMAINING IDLE CIRCUIT TO REMAIN AS SPARE IN THE EXISTING PANEL. PULL OUT ANY SPARE EXISTING SWITCHES WITH NEW SWITCHES AND COVER LATE RECONNECT SO THAT BOTH SWITCHES ARE ON A SINGLE 20 AMP CIRCUIT. EACH SWITCH TO CONTROL ONE ROW OF LIGHT FIXTURES (U.O.N.) TYPICAL.
- 24 PROVIDE NEW KEY OPERATED SWITCH AND REMOVE EXISTING SWITCHES. RUN NEW FEED CONCEAL IN EXISTING WALL.
- 25 SIMILAR PER NOTE 23 EXCEPT REUSE TWO OUT OF EXISTING CIRCUITS.
- 26 REMOVE TWO DOUBLE POLE SWITCHES WITH EXISTING SWITCHES. RUN NEW FEED CONCEAL TO EACH SWITCH TO CONTROL A ROW OF LIGHTS. TYPICAL FOR TWO ROOMS.
- 27 INSTALL NEW TYPE 11 EXIT LIGHT. CONNECT TO EXISTING CIRCUIT IN WALL. CUT & PATCH WALL AS REQUIRED.
- 28 THIS #12 X 4 #12 PAGES. COLL. 36" OF 3/4" X 3/4" NEW PULL CAN. RUN ALL THE EXISTING WIRE FROM THE PULL CAN TO THE NEW PANEL. EXCEPT INCLUDING AT THE NEW PANEL.
- 29 REMOVE EXISTING LIGHT FIXTURES. REMOVE EXISTING CIRCUIT FOR NEW FIXTURES. THERE ARE TWO EXISTING 20 AMP CIRCUITS FOR THE NEW EXISTING LIGHT FIXTURES. RUN A SINGLE 20 AMP CIRCUIT PER CLASSROOM. REMAINING IDLE CIRCUIT TO REMAIN AS SPARE IN THE EXISTING PANEL. PULL OUT ANY SPARE EXISTING SWITCHES WITH NEW SWITCHES AND COVER LATE RECONNECT SO THAT BOTH SWITCHES ARE ON A SINGLE 20 AMP CIRCUIT. EACH SWITCH TO CONTROL ONE ROW OF LIGHT FIXTURES (U.O.N.) TYPICAL.
- 30 REPLACE EXISTING SWITCHES WITH NEW SWITCHES AND COVER LATE RECONNECT SO THAT BOTH SWITCHES ARE ON A SINGLE 20 AMP CIRCUIT. EACH SWITCH TO CONTROL ONE ROW OF LIGHT FIXTURES (U.O.N.) TYPICAL.
- 31 PROVIDE NEW KEY OPERATED SWITCH AND REMOVE EXISTING SWITCHES. RUN NEW FEED CONCEAL IN EXISTING WALL.
- 32 SIMILAR PER NOTE 23 EXCEPT REUSE TWO OUT OF EXISTING CIRCUITS.
- 33 REMOVE TWO DOUBLE POLE SWITCHES WITH EXISTING SWITCHES. RUN NEW FEED CONCEAL TO EACH SWITCH TO CONTROL A ROW OF LIGHTS. TYPICAL FOR TWO ROOMS.
- 34

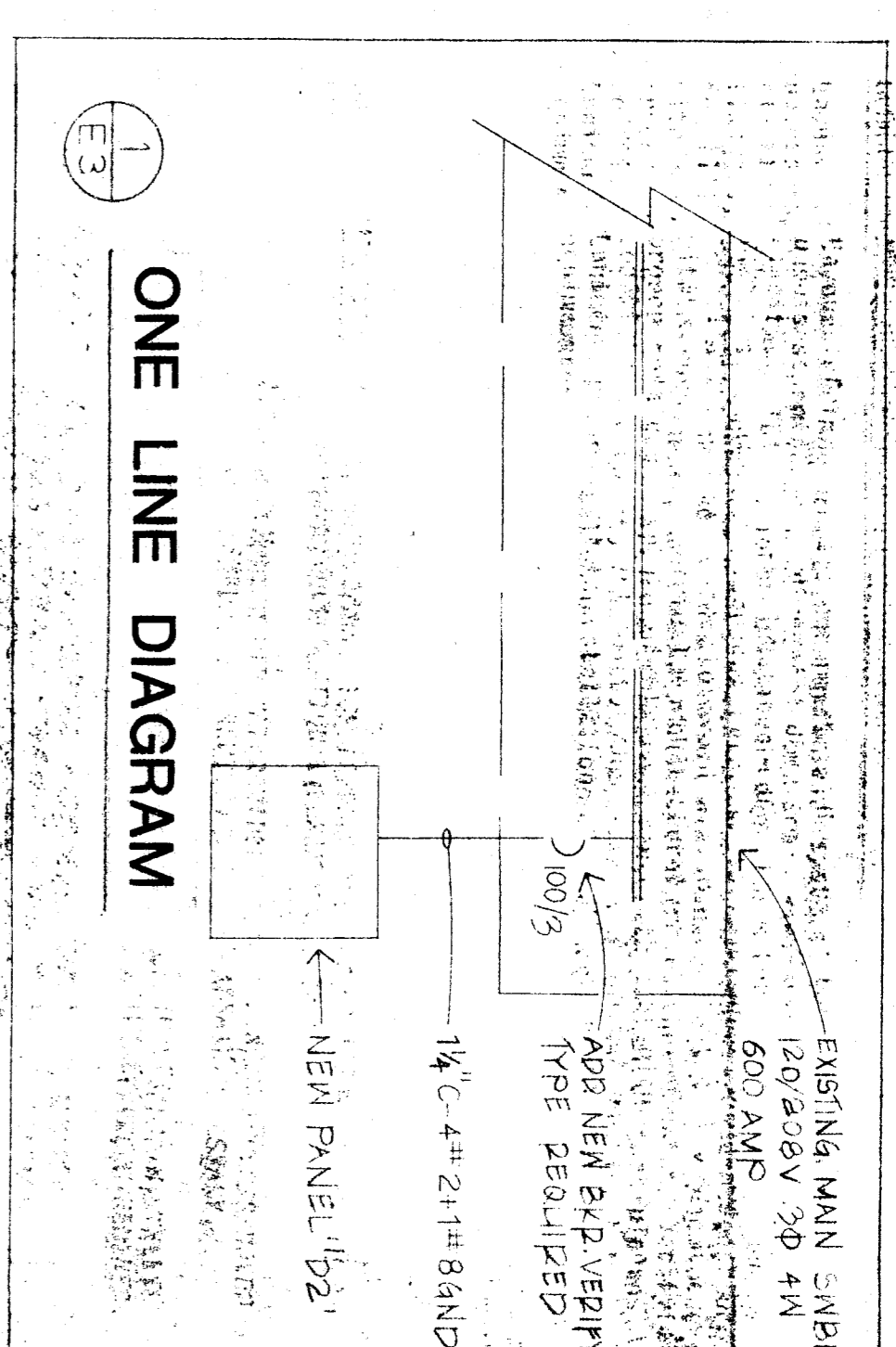


CONTRACTOR TO VERIFY WITH ARCHITECT FOR EXACT ROUTING OF ANY ISOSORB FEEDS. THE FEEDS ARE FOR AIR HAND UNITS. TYPICAL.

FIXTURE SCHEDULE

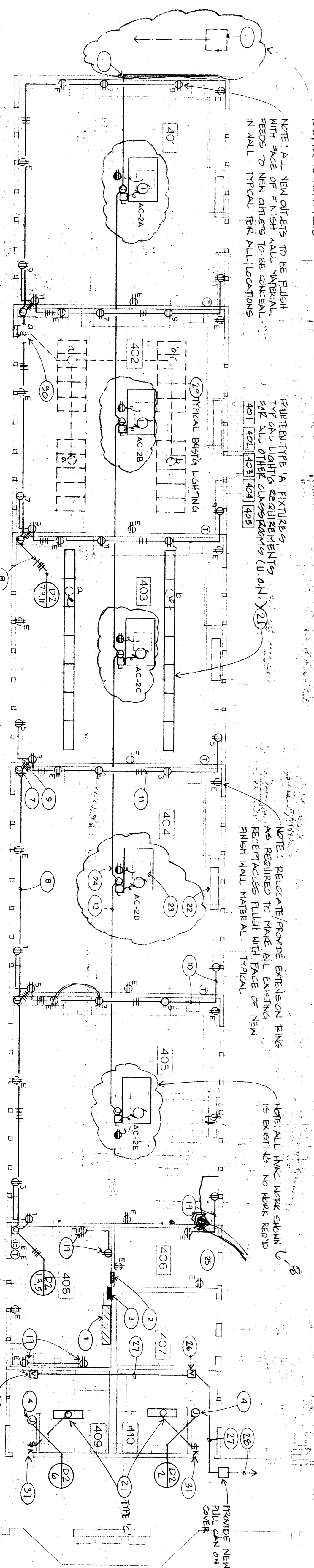
FIXTURE SYMBOL (3-A-150): 3-CIRCUIT NUMBER, A-FIXTURE TYPE, 150 = FIXT. WATTAGE
ALL FLUORESCENT LAMPS TO BE T8 35K
ALL FLUORESCENT BALLASTS ELECTROSTATIC TYPE (U.O.N.)

CIR	BRK	9A	9B	9C	DESCRIPTION	9C	9B	9A	BRK	CIR
1	120	720			RECEPTACLES 20A			1200	120	2
3	3	720			"			1200	120	4
5	5	720			"			1200	120	6
7	7	720			"			1200	120	8
9	9	720			"			1200	120	10
11	11	720			"			1200	120	12
13	13	720			"			1200	120	14
15	15	720			"			1200	120	16
17	17	720			"			1200	120	18
19	19	720			"			1200	120	20
21	21	720			"			1200	120	22
23	23	720			"			1200	120	24
25	25	720			"			1200	120	26
27	27	720			"			1200	120	28
29	29	720			"			1200	120	30



PANEL 'D2'

CIR	BRK	9A	9B	9C	DESCRIPTION	9C	9B	9A	BRK	CIR
1	120	720			RECEPTACLES 20A			1200	120	2
3	3	720			"			1200	120	4
5	5	720			"			1200	120	6
7	7	720			"			1200	120	8
9	9	720			"			1200	120	10
11	11	720			"			1200	120	12
13	13	720			"			1200	120	14
15	15	720			"			1200	120	16
17	17	720			"			1200	120	18
19	19	720			"			1200	120	20
21	21	720			"			1200	120	22
23	23	720			"			1200	120	24
25	25	720			"			1200	120	26
27	27	720			"			1200	120	28
29	29	720			"			1200	120	30



CONTRACTOR TO VERIFY WITH ARCHITECT FOR EXACT ROUTING OF ANY ISOSORB FEEDS. THE FEEDS ARE FOR AIR HAND UNITS. TYPICAL.

ELECTRICAL PLANS

1/8"=1'-0"

COMBINED ENGINEERING, INC.
1100110 CALIFORNIA STREET
BAKERSFIELD, CALIF. 93311

pechin architects
1400 eastern drive suite 138
bakersfield, ca 93309 (805) 322-2021

Frank West Elementary School
Modernization
Bakersfield City School District

DATE	ISSUE FOR
DATE	REVISION

THESE DRAWINGS, RELATED SPECIFICATIONS, IDEAS, DESIGNS, AND ARRANGEMENTS REPRESENTED THEREBY ARE AND SHALL REMAIN THE PROPERTY OF THE ARCHITECT. NO PART THEREOF SHALL BE COPIED, REPRODUCED, OR TRANSMITTED IN ANY FORM OR BY ANY MEANS, ELECTRONIC OR MECHANICAL, INCLUDING PHOTOCOPYING, RECORDING, OR BY ANY INFORMATION STORAGE AND RETRIEVAL SYSTEM, WITHOUT THE WRITTEN PERMISSION OF THE ARCHITECT. THESE DRAWINGS AND SPECIFICATIONS SHALL CONSTITUTE COMPLETE CONTRACT DOCUMENTS AND SHALL BE SUBJECT TO THE TERMS AND CONDITIONS OF THESE RESTRICTIONS.

WRITTEN DIMENSIONS ON THESE DRAWINGS SHALL HAVE PRECEDENCE OVER SCALED DIMENSIONS AND CONDITIONS ON THE JOB AND THIS OFFICE MUST BE NOTIFIED OF ANY VARIATIONS FROM THE DIMENSIONS AND CONDITIONS SHOWN.

DETAILED SHOP DRAWINGS MUST BE SUBMITTED TO THE OFFICE FOR REVIEW BEFORE PROCEEDING WITH THE FABRICATION OF ANY PROJECT TO BE INCLUDED IN THESE DRAWINGS.