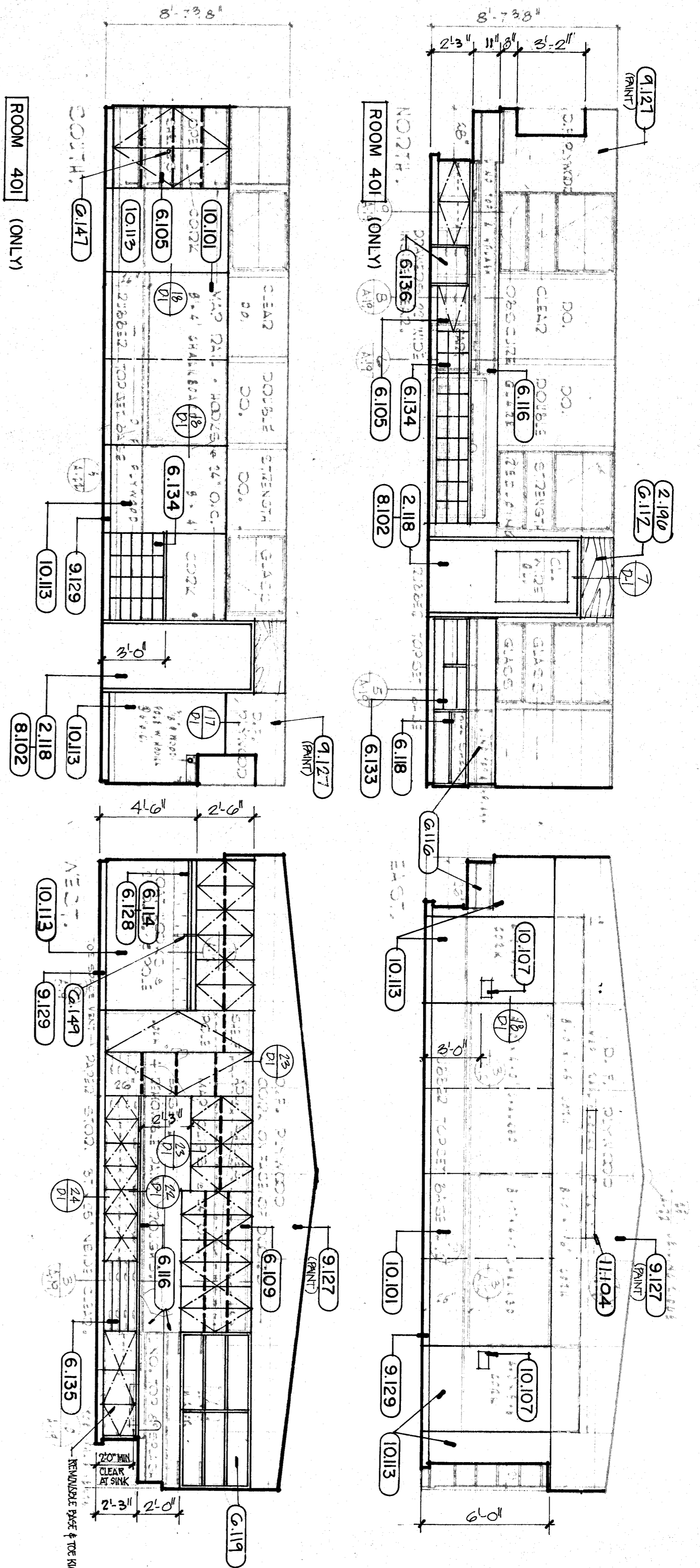
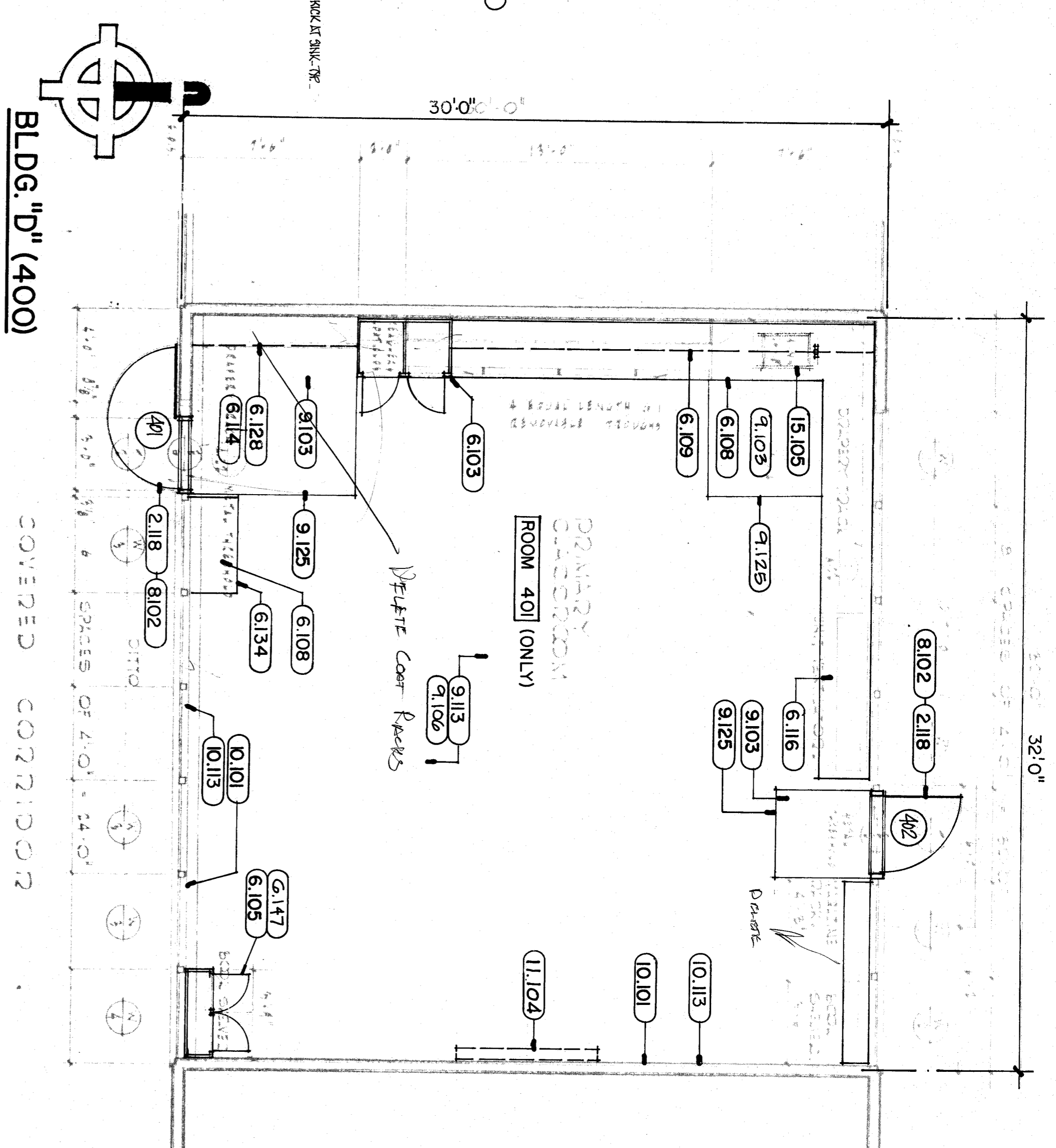


interior elevations



1/4" floor plan



GENERAL NOTES:

GENERAL CONTRACTOR SHALL VERIFY AND PROVIDE AS REQUIRED BARRIER-FREE PATH OF TRAVEL WITHOUT ABRUPT VERTICAL CHANGE EXCEEDING 1/2" AT 45 DEGREES OR COMPLY WITH REQUIREMENTS FOR PEDESTRIAN RAMPS.

PROVIDE MIN. R-19 INSULATION IN CEILING OF ALL BUILDING SPACES AND ALL INFILL CONSTRUCTION OF WALLS OF BUILDING C, E & D.

REMOVED (E) VCT SCHEDULED TO BE REMOVED TO GREATEST EXTENT POSSIBLE. REINSTALL AS REQUIRED AT CONCRETE PATCH AREAS SCHEDULED TO RECEIVE CARPETTING OVER (E) VCT TO PROVIDE UNIFORM SURFACE SUBSTRATE.

REMOVE (E) CABINETS IN CLASSROOMS SCHEDULED TO RECEIVE NEW CABINETS, SEE FLOOR PLANS & INTERIOR ELEVATIONS.

REMOVE (E) TACKAGE IN MULTI-PURPOSE BUILDING PRIOR TO INSTALLING NEW VINYL COVERED TACKBOARD, SEE INTERIOR ELEVATIONS.

REMOVE EXIST. DOORS & FRAMES AS NOTED ON PLAN. PROVIDE DOORS & FRAMES AS SCHEDULED. NOTES TYPICAL OF ALL CLASSROOMS EXCEPT AS NOTED OTHERWISE.

CAP ALL ABANDONED UTILITIES BEHIND FINISH SURFACES.

PROVIDE ADDITIONAL GUE-UP ACOUSTICAL TILES WHERE EXISTING ARE NOTED AS REQUIRED WHERE CEILING HAS BEEN DAMAGED DURING CONSTRUCTION.

CONTRACTOR SHALL VERIFY ALL EXIST. MECH. REGISTER & GRILLE LOCATIONS IN EXIST. CEILING.

KEYNOTES

2.118 REMOVE (E) DOOR & FRAME	02072
2.196 REMOVE (E) DOOR AND FRAME	02072
6.103 PLASTIC LAMINATED CABINETS	06410
6.105 PLASTIC LAMINATED CABINET DOOR	06410
6.108 PLASTIC LAMINATED UPPER CABINETS	06410
6.112 INFILL (E) OPENING W/WALLS TO MATCH ADJACENT SURFACES	06200
6.114 1x4 W/ COAT HOOKS & 8" O.C.	06200
6.116 PLASTIC LAMINATED COUNTERTOP W/ SPLASH	06410
6.118 FILE DRAWERS 16" MIN. WIDTH	06410
6.119 CLOTHES POLE	06200
6.120 PLASTIC LAMINATE MAGAZINE RACK	06410
6.122 PLASTIC LAMINATE DRAWERS	06410
6.125 DRAWERS 37"x25" NET INSIDE CLEAR	06410
6.136 PLASTIC LAMINATE BALL BIN	06410
6.147 CABINET LOCK	06410
6.149 PLASTIC LAMINATE WOOD POLE BRACE	06410
8.102 METAL DOOR & FRAME	08111
9.103 VINYL COMPOSITION (VCT) FLOORING	09650
9.106 CARPET	09688
9.113 PATCH (E) VCT UNDER CARPET AS NOTED FOR PROPER SUBSTRATE	09686
9.127 REFINISH EDGE D.P. PLYWOOD FRAME TYPICAL BRSS	09900
9.129 TYPICAL BRSS	09650
10.101 MARKERBOARD	10100
10.113 VINYL-COVERED TACKBOARD	10100
11.104 PROJECTION SCREEN	11132
15.105 SINK, SEE PLUMBING PLANS	15400

Frank West Elementary School
Modernization
Bakersfield City School District

DATE	ISSUE FOR
DATE	REVISION

THESE DRAWINGS, RELATED SPECIFICATIONS, IDEAS, DESIGNS, AND ARRANGEMENTS REPRESENTED THEREBY ARE AND SHALL REMAIN THE PROPERTY OF THE ARCHITECT; AND NO PART THEREOF SHALL BE COPIED, DISCLOSED TO OTHERS OR USED IN CONNECTION WITH ANY WORK OR PROJECT OTHER THAN THE SPECIFIC PROJECT FOR WHICH THEY HAVE BEEN PREPARED AND DEVELOPED WITHOUT THE WRITTEN CONSENT OF THE ARCHITECT. VISUAL CONTACT WITH THESE DRAWINGS OR SPECIFICATIONS SHALL CONSTITUTE CONCLUSIVE EVIDENCE OF ACCEPTANCE OF THESE RESTRICTIONS.

WRITTEN DIMENSIONS ON THESE DRAWINGS SHALL HAVE PRECEDENCE OVER SCALED DIMENSIONS; CONTRACTORS SHALL VERIFY AND BE RESPONSIBLE FOR ALL DIMENSIONS AND CONDITIONS ON THE JOB AND THIS OFFICE MUST BE NOTIFIED OF ANY VARIATIONS FROM THE DIMENSIONS AND CONDITIONS SHOWN BY THESE DRAWINGS.

DETAILED SHOP DRAWINGS MUST BE SUBMITTED TO THIS OFFICE FOR REVIEW BEFORE PROCEEDING WITH THE FABRICATION OF ANY PRODUCT TO BE INCLUDED IN THIS PROJECT.

pechin associates aia
1400 easton drive suite 138
bakersfield, ca 93309 (805) 322-2021

Armen C. Pechin C-8366

PROJECT SHEET
Project Number: 408-0688