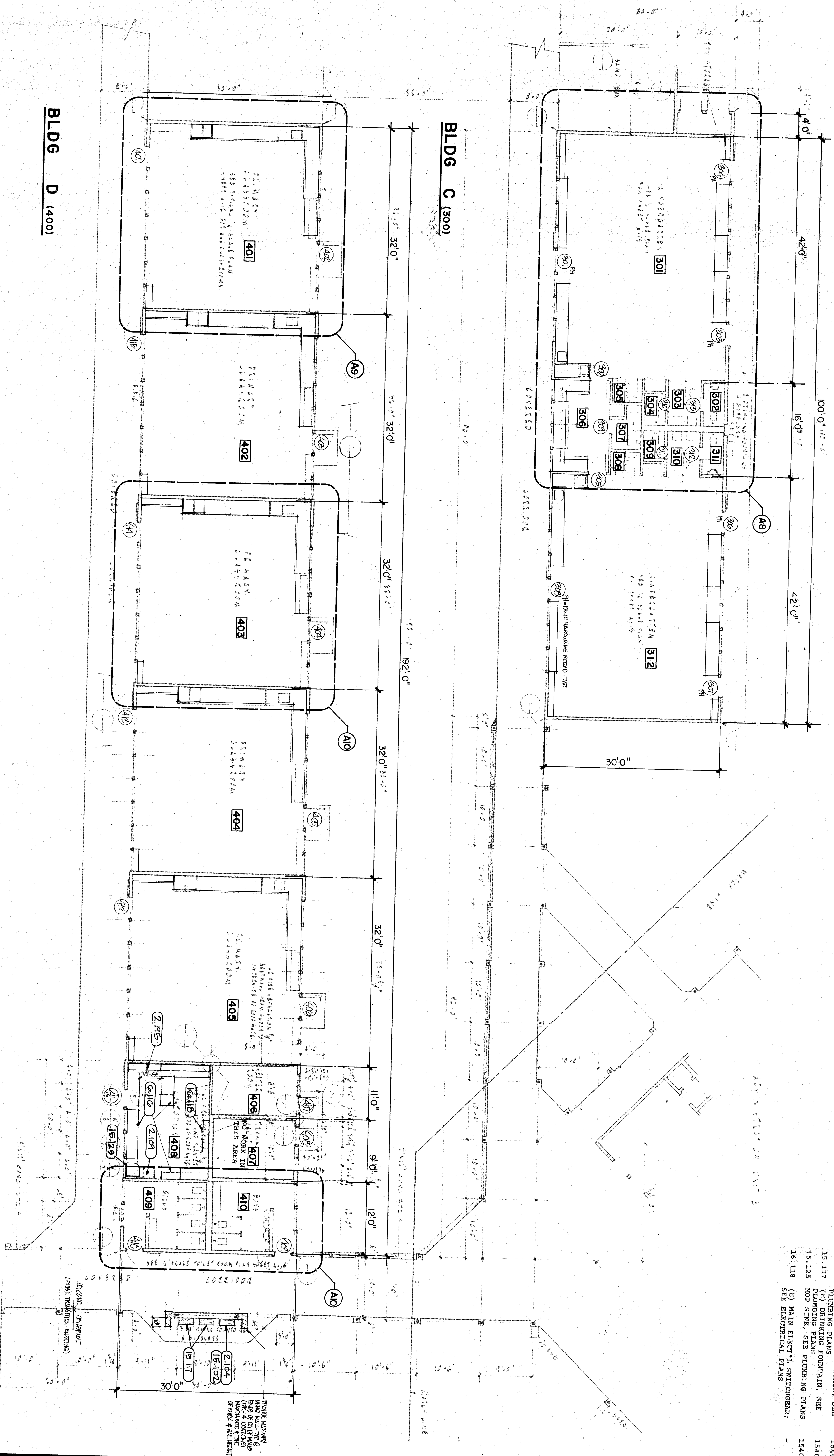


FLOOR PLAN



- ### KEYNOTES
- 2.104 REMOVE (E) DRINKING FOUNTAIN; SEE PLUMBING PLANS; 02072
 - 2.109 REMOVE (E) SINKS; SEE PLUMBING PLANS; 02072
 - 2.195 (E) METAL LOCKERS TO REMAIN -0-
 - 6.116 PLASTIC LAMINATED COUNTERTOP W/ SPLASH 06430
 - 15.102 H.C. DRINKING FOUNTAIN; SEE PLUMBING PLANS; 15400
 - 15.117 (E) DRINKING FOUNTAIN, SEE PLUMBING PLANS; 15400
 - 15.125 HOP SINK, SEE PLUMBING PLANS; 15400
 - 16.118 (E) VAIN ELECTR'L SWITCHGEAR; SEE ELECTRICAL PLANS; 15400

17899

pechin associates
architects aia

1400 easton drive suite 138
bakersfield, ca 93309 (805)322-2021

Frank West Elementary School
Modernization
Bakersfield City School District

C-8366

97

Project Number 408-0688

DATE _____ ISSUE FOR _____

DATE _____ REVISION _____

THESE DRAWINGS, RELATED SPECIFICATIONS, IDEAS, DESIGNS, AND ARRANGEMENTS REPRESENTED THEREBY ARE AND SHALL REMAIN THE PROPERTY OF THE ARCHITECT; AND NO PART THEREOF SHALL BE COPIED, DISCLOSED TO OTHERS OR USED IN CONNECTION WITH ANY WORK OR PROJECT OTHER THAN THE SPECIFIC PROJECT FOR WHICH THEY HAVE BEEN PREPARED AND DEVELOPED WITHOUT THE WRITTEN CONSENT OF THE ARCHITECT. VISUAL CONTACT WITH THESE DRAWINGS OR SPECIFICATIONS SHALL CONSTITUTE CONCLUSIVE EVIDENCE OF ACCEPTANCE OF THESE RESTRICTIONS.

WRITTEN DIMENSIONS ON THESE DRAWINGS SHALL HAVE PRECEDENCE OVER SCALED DIMENSIONS; CONTRACTORS SHALL VERIFY AND BE RESPONSIBLE FOR ALL DIMENSIONS AND CONDITIONS ON THE JOB AND THIS OFFICE MUST BE NOTIFIED OF ANY VARIATIONS FROM THE DIMENSIONS AND CONDITIONS SHOWN BY THESE DRAWINGS.

DETAILED SHOP DRAWINGS MUST BE SUBMITTED TO THIS OFFICE FOR REVIEW BEFORE PROCEEDING WITH THE FABRICATION OF ANY PRODUCT TO BE INCLUDED IN THIS PROJECT.