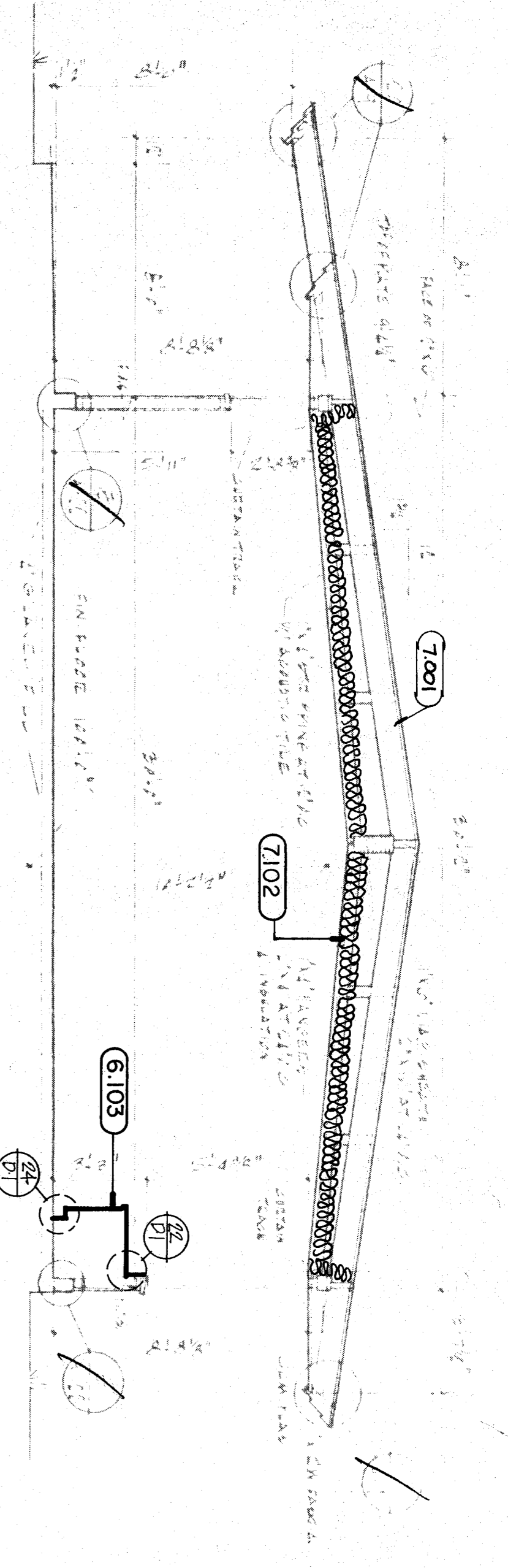
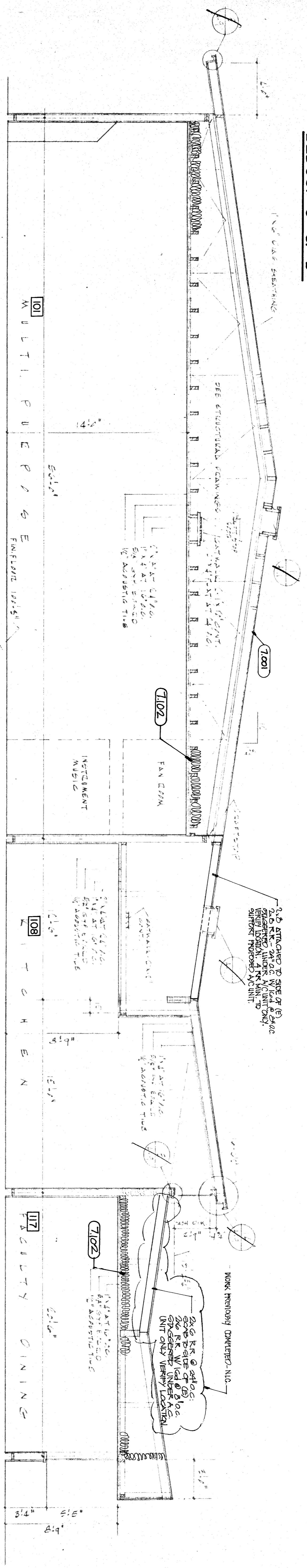


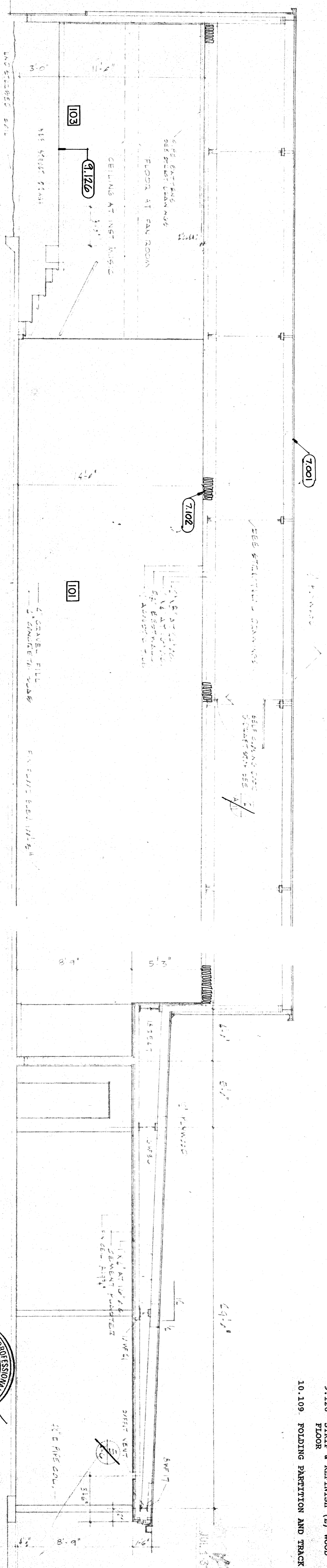
sections



BLDGS. "C" & "D"

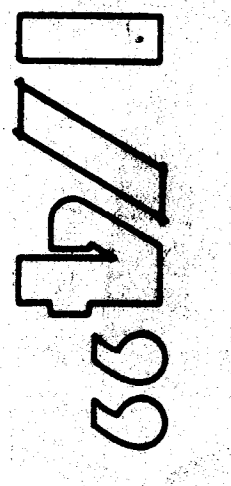
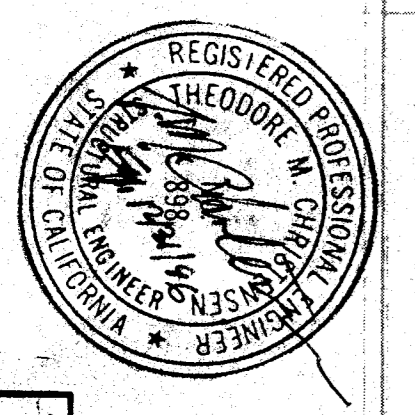


BLDG. "A"



BLDG. "A"

- KEYNOTES**
- 6.103 PLASTIC LAMINATED CABINETS 06410
 - 7.001 FLUID APPLIED ROOFING 07540
 - 7.102 R-19 MIN. INSULATION 07213
 - 9.103 VINYL COMPOSITION (VCF) FLOORING TO REPLACE EXISTING FLOORING & REFINISH (E) WOOD 09650
 - 9.126 FLOOR 09900
 - 10.109 FOLDING PARTITION AND TRACK 10620



5.31.95

<p>PROJECT NUMBER: 408-0688</p>	<p>SHEET</p>	<p>pechin associates architects aia</p> <p>1400 easton drive suite 138 bakersfield, ca 93309 (805) 322-2021</p>	<p>C-8366</p> <p>Frank West Elementary School Modernization Bakersfield City School District</p>	DATE	ISSUE FOR
				DATE	REVISION

THESE DRAWINGS, RELATED SPECIFICATIONS, IDEAS, DESIGNS, AND ARRANGEMENTS REPRESENTED THEREBY ARE AND SHALL REMAIN THE PROPERTY OF THE ARCHITECT, AND NO PART THEREOF SHALL BE COPIED, DISCLOSED TO OTHERS OR USED IN CONNECTION WITH ANY WORK OR PROJECT OTHER THAN THE SPECIFIC PROJECT FOR WHICH THEY HAVE BEEN PREPARED AND DEVELOPED WITHOUT THE WRITTEN CONSENT OF THE ARCHITECT. VISUAL CONTACT WITH THESE DRAWINGS OR SPECIFICATIONS SHALL CONSTITUTE CONCLUSIVE EVIDENCE OF ACCEPTANCE OF THESE RESTRICTIONS.

WRITTEN DIMENSIONS ON THESE DRAWINGS SHALL HAVE PRECEDENCE OVER SCALED DIMENSIONS; CONTRACTORS SHALL VERIFY AND BE RESPONSIBLE FOR ALL DIMENSIONS AND CONDITIONS ON THE JOB AND THE OFFICE MUST BE NOTIFIED OF ANY VARIATIONS FROM THE DIMENSIONS AND CONDITIONS SHOWN BY THESE DRAWINGS.

DETAILED SHOP DRAWINGS MUST BE SUBMITTED TO THIS OFFICE FOR REVIEW BEFORE PROCEEDING WITH THE FABRICATION OF ANY PRODUCT TO BE INCLUDED IN THIS PROJECT.