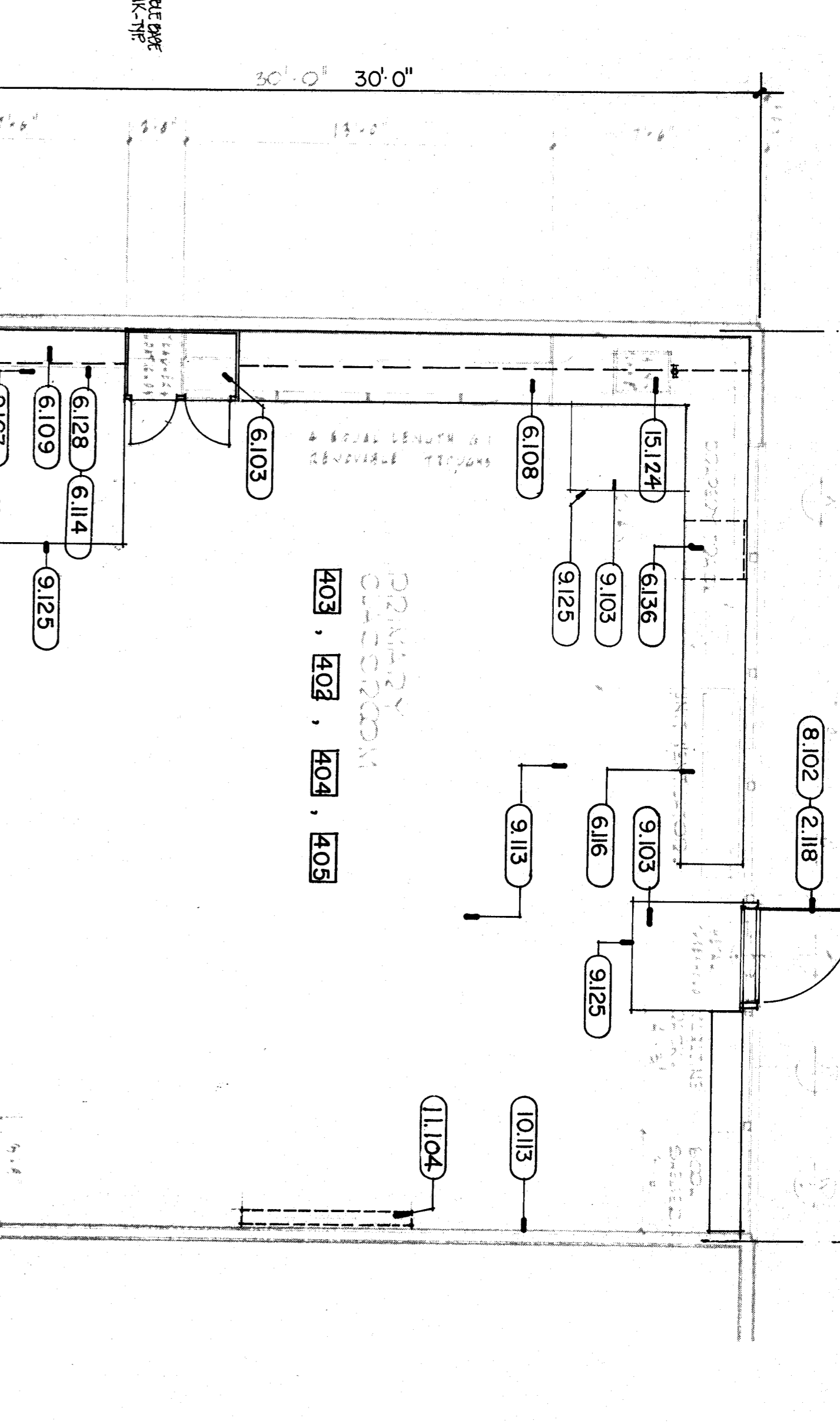
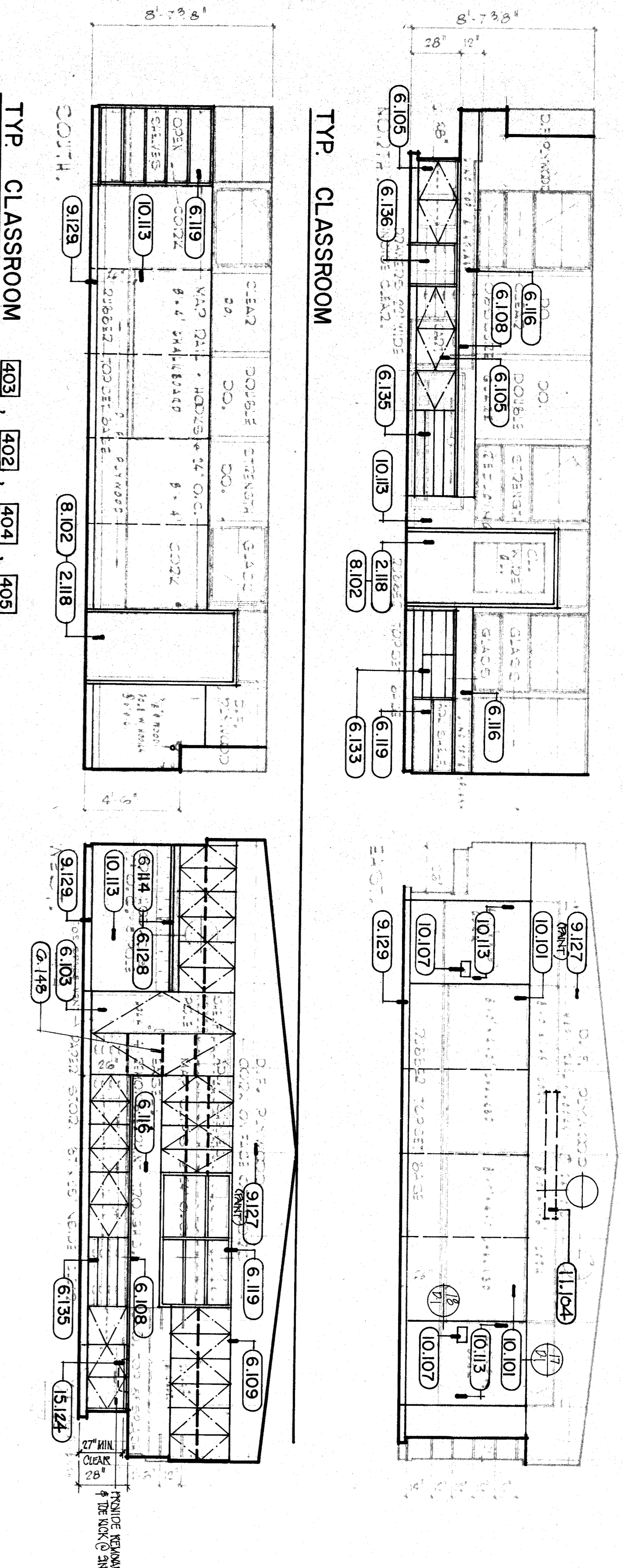
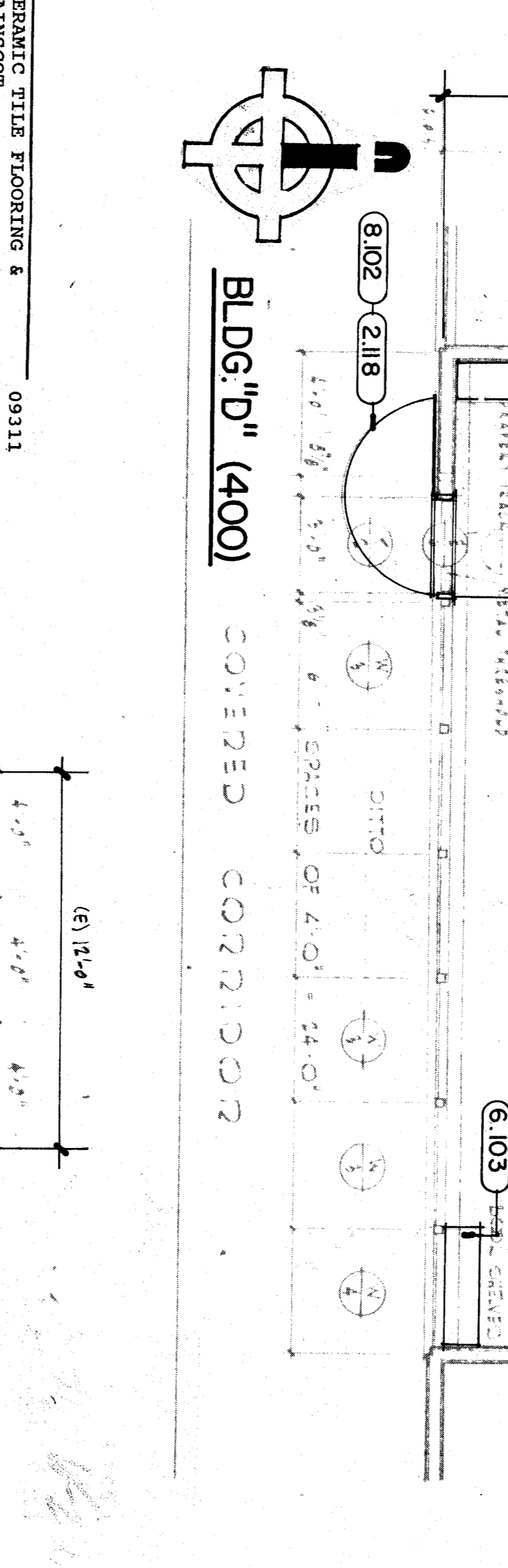
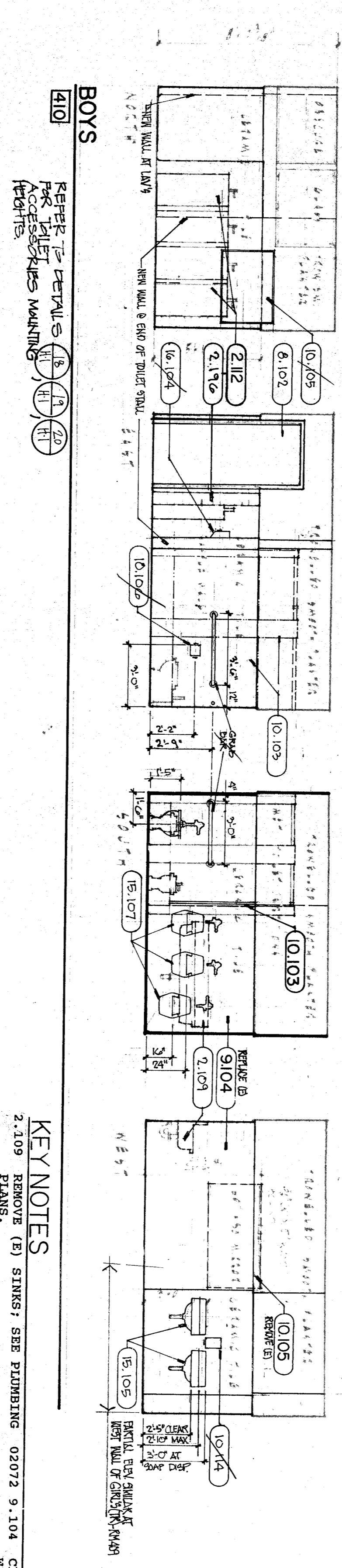
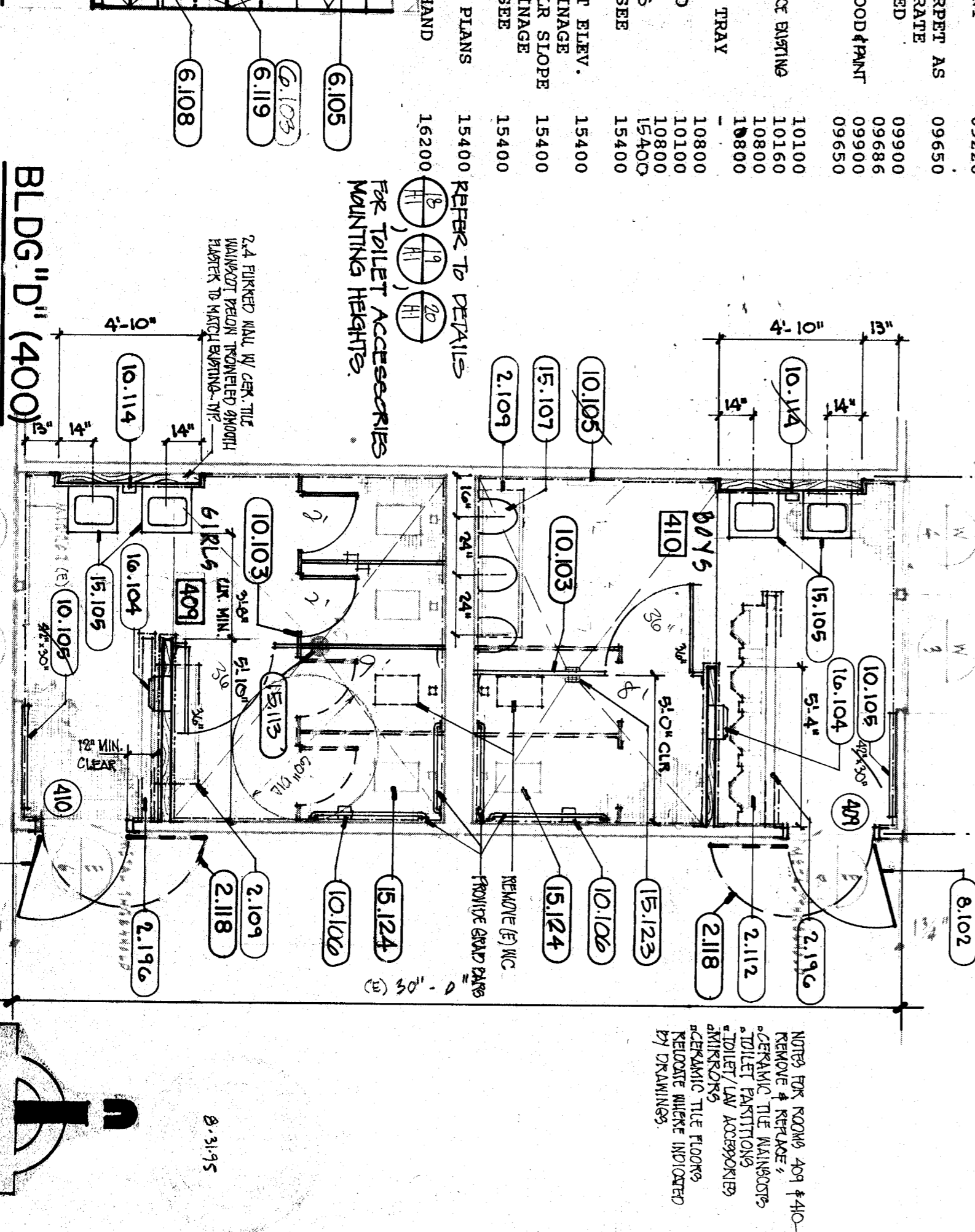
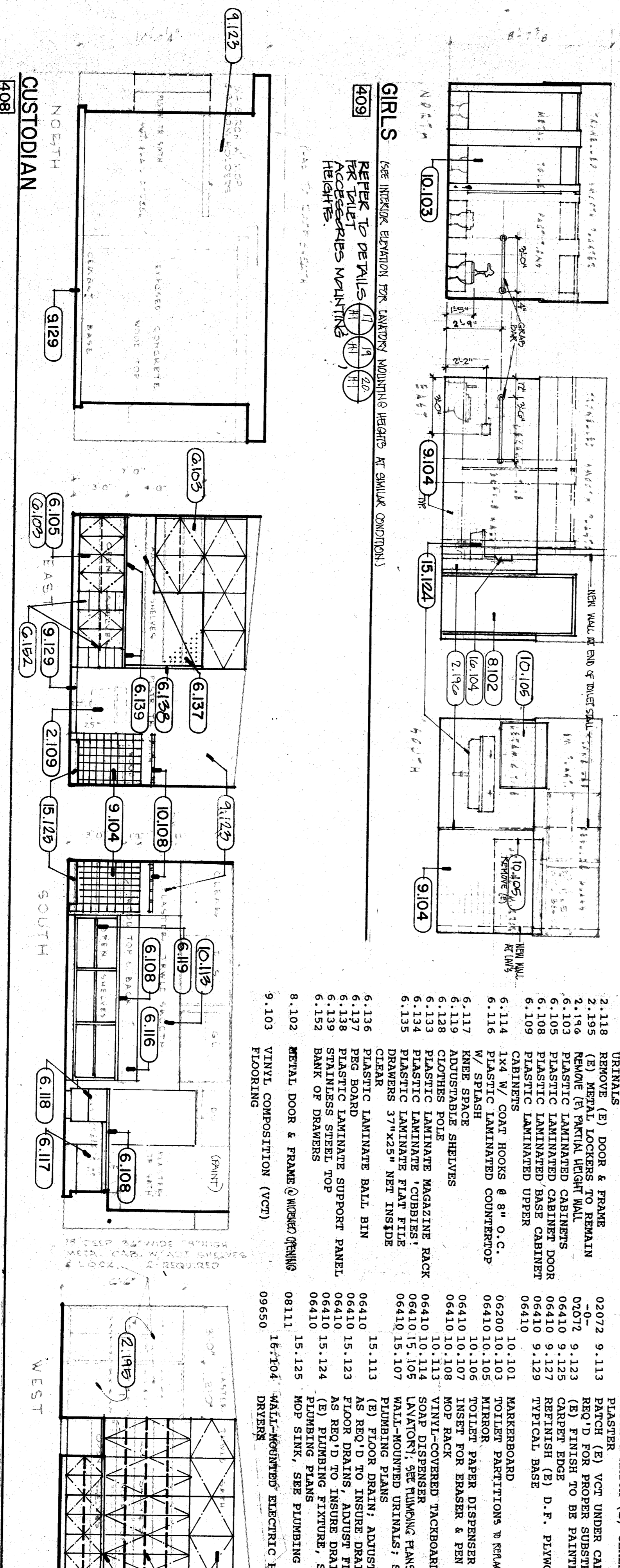


Interior Elevations

1/4" = 1'-0"

Floor Plans

1/4" = 1'-0"



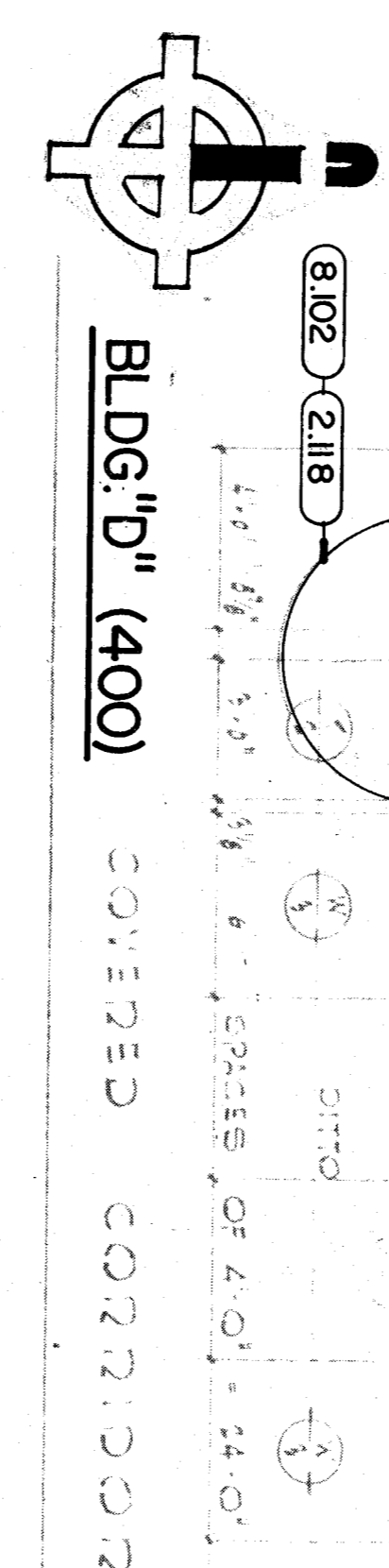
410 BOYS
REFER TO DETAILS 11, 12, 13, 14 FOR TOILET ACCESSORIES MAINTENANCE HEIGHTS

409 GIRLS
SEE INTERIOR ELEVATION FOR LANTERN MOUNTING HEIGHTS AT SINGLE CONDITIONS
REFER TO DETAILS 11, 12, 13, 14 FOR TOILET ACCESSORIES MAINTENANCE HEIGHTS

408 CUSTODIAN
NORTH
EAST
WEST

KEY NOTES

2.109 REMOVE (E) SINKS; SEE PLUMBING PLANS	02072 9.104 CERAMIC TILE FLOORING & MAINSCOTT	09311
2.112 REMOVE (E) FLOOR-MOUNTED PATCH & MATCH (E) CEMENT PLASTER (E) VCT UNDER CARPET AS REQ'D FOR PROPER SUBSTRATE CARPET EDGE TO BE PAINTED REFINISH (E) D. F. PLYWOOD TYPICAL BASE	02072 9.108	09220
2.118 REMOVE (E) DOOR & FRAME REMOVE (E) PARTIAL LIGHT WALL	02072 9.113	09650
2.196 REMOVE (E) PARTIAL LIGHT WALL	07072 9.123	09980
6.103 PLASTIC LAMINATED CABINETS	06410 9.125	09686
6.105 PLASTIC LAMINATED CABINET DOOR	06410 9.127	09686
6.108 PLASTIC LAMINATED BASE CABINET	06410 9.129	09650
6.109 CABINETS	06410	
6.114 PLASTIC LAMINATED UPPER CABINETS	06200 10.103	10100
6.116 PLASTIC LAMINATED LOWER CABINETS	06200 10.105	10100
6.117 ADJUSTABLE SHELVES	06410 10.106	10880
6.118 W/ SPINAGE	06410 10.108	10880
6.119 ADJUSTABLE SHELVES	06410 10.110	10880
6.128 CLOTHES POLE	06410 10.113	10880
6.133 PLASTIC LAMINATE MAGAZINE RACK	06410 10.114	10880
6.134 PLASTIC LAMINATE FLAT FILE	06410 15.105	10880
6.135 PLASTIC LAMINATED CABINETS; PLASTER 37"x25" MET. INSIDE CLEAR	06410 15.107	15400
6.136 PLASTIC LAMINATE BALL BIN	15.113	15400
6.137 PEG BOARD	06410 15.123	15400
6.138 PLASTIC LAMINATE SUPPORT PANEL	06410 15.124	15400
6.139 STAINLESS STEEL TOP	06410 15.124	15400
6.152 BANK OF DRAWERS	08111 15.125	15400
8.102 SPECIAL DOOR & FRAME @ WORKED OPENINGS	08111 16-7104	15400
9.103 VINYL COMPOSITION (VCT) FLOORING	09650	16200
		16200
		16200
		16200
		16200



pechin associates architects aia
1400 easton drive bakersfield, ca 93309 suite 138 (805) 322-2021

Tarron C. Pechin

C-8366

RAIO

Project Number: 408-0688

Frank West Elementary School Modernization
Bakersfield City School District

DATE	ISSUE FOR
DATE	REVISION

THESE DRAWINGS, RELATED SPECIFICATIONS, IDEAS, DESIGNS, AND ARRANGEMENTS REPRESENTED THEREIN ARE AND SHALL REMAIN THE PROPERTY OF THE ARCHITECT; AND NO PART THEREOF SHALL BE COPIED, REPRODUCED, OR USED IN CONNECTION WITH ANY WORK OR PROJECT OTHER THAN THE SPECIFIC PROJECT FOR WHICH THEY HAVE BEEN PREPARED AND DEVELOPED WITHOUT THE WRITTEN CONSENT OF THE ARCHITECT. WRITTEN CONTACT WITH THESE DRAWINGS OR SPECIFICATIONS SHALL CONSTITUTE CONCLUSIVE EVIDENCE OF ACCEPTANCE OF THESE RESTRICTIONS.

WRITTEN DIMENSIONS ON THESE DRAWINGS SHALL HAVE PRECEDENCE OVER SCALED DIMENSIONS; CONTRACTORS SHALL VERIFY AND BE RESPONSIBLE FOR ALL DIMENSIONS AND CONDITIONS ON THE JOB AND THE OFFICE MUST BE NOTIFIED OF ANY VARIATIONS FROM THE DIMENSIONS AND CONDITIONS SHOWN BY THESE DRAWINGS.

DETAILED SHOP DRAWINGS MUST BE SUBMITTED TO THIS OFFICE FOR REVIEW BEFORE PROCEEDING WITH THE FABRICATION OF ANY PRODUCT TO BE INCLUDED IN THIS PROJECT.