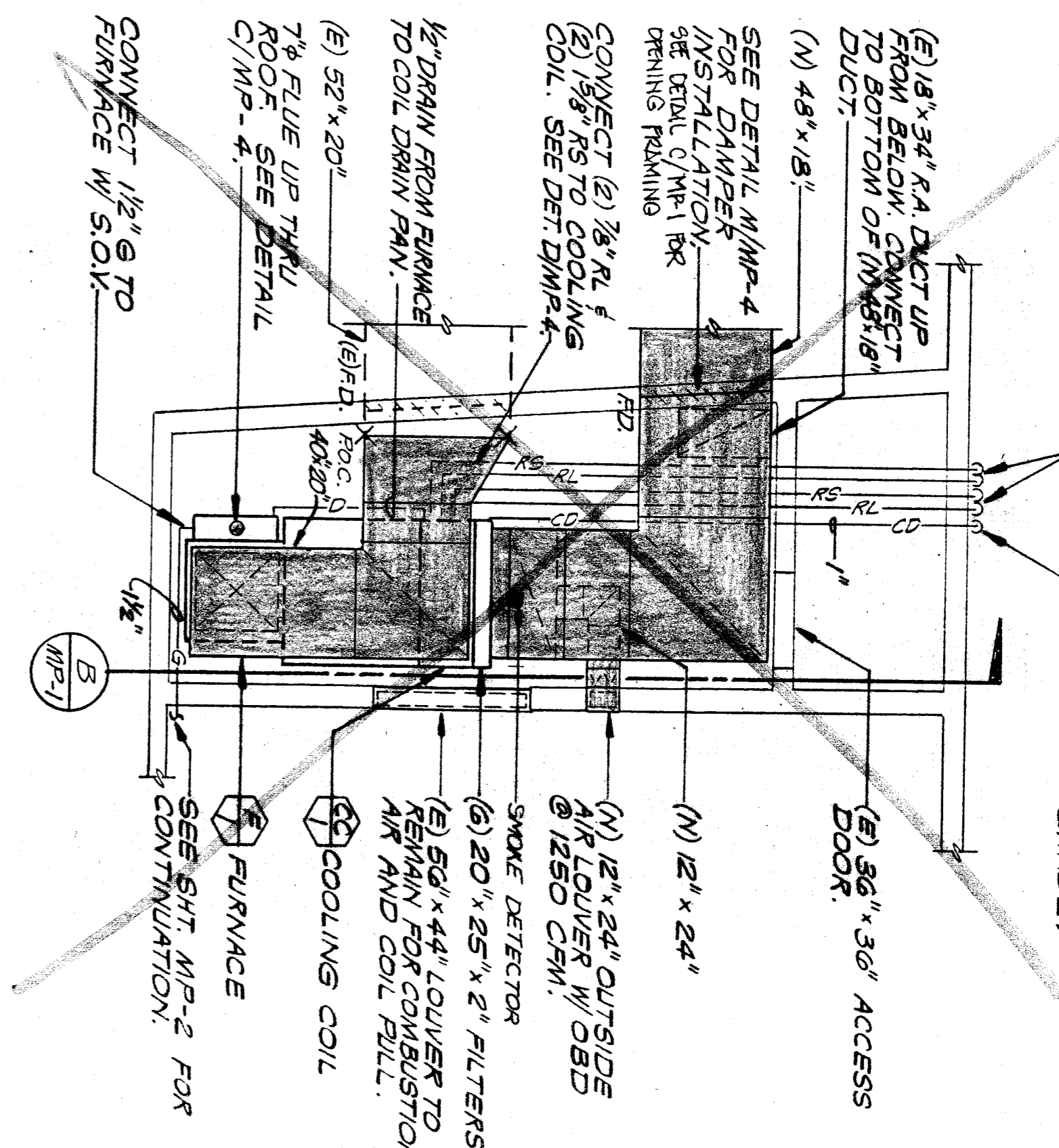
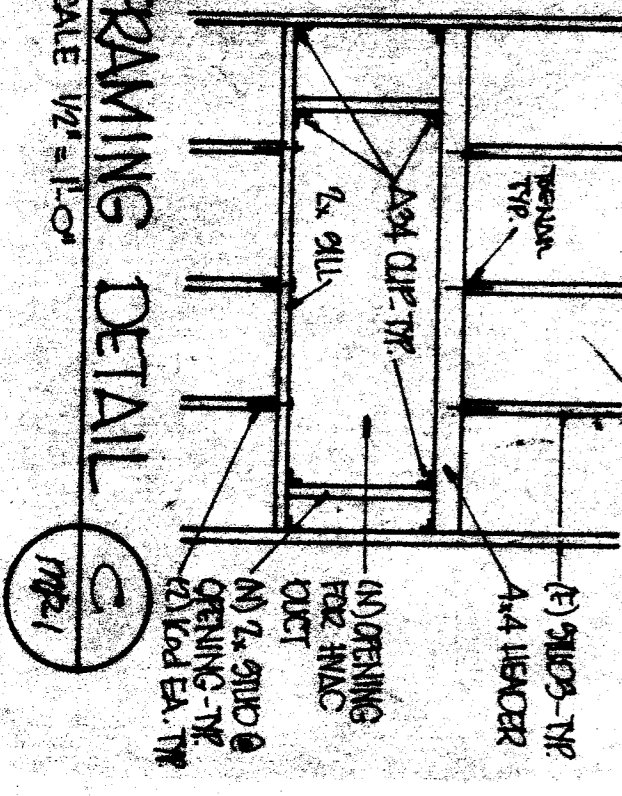
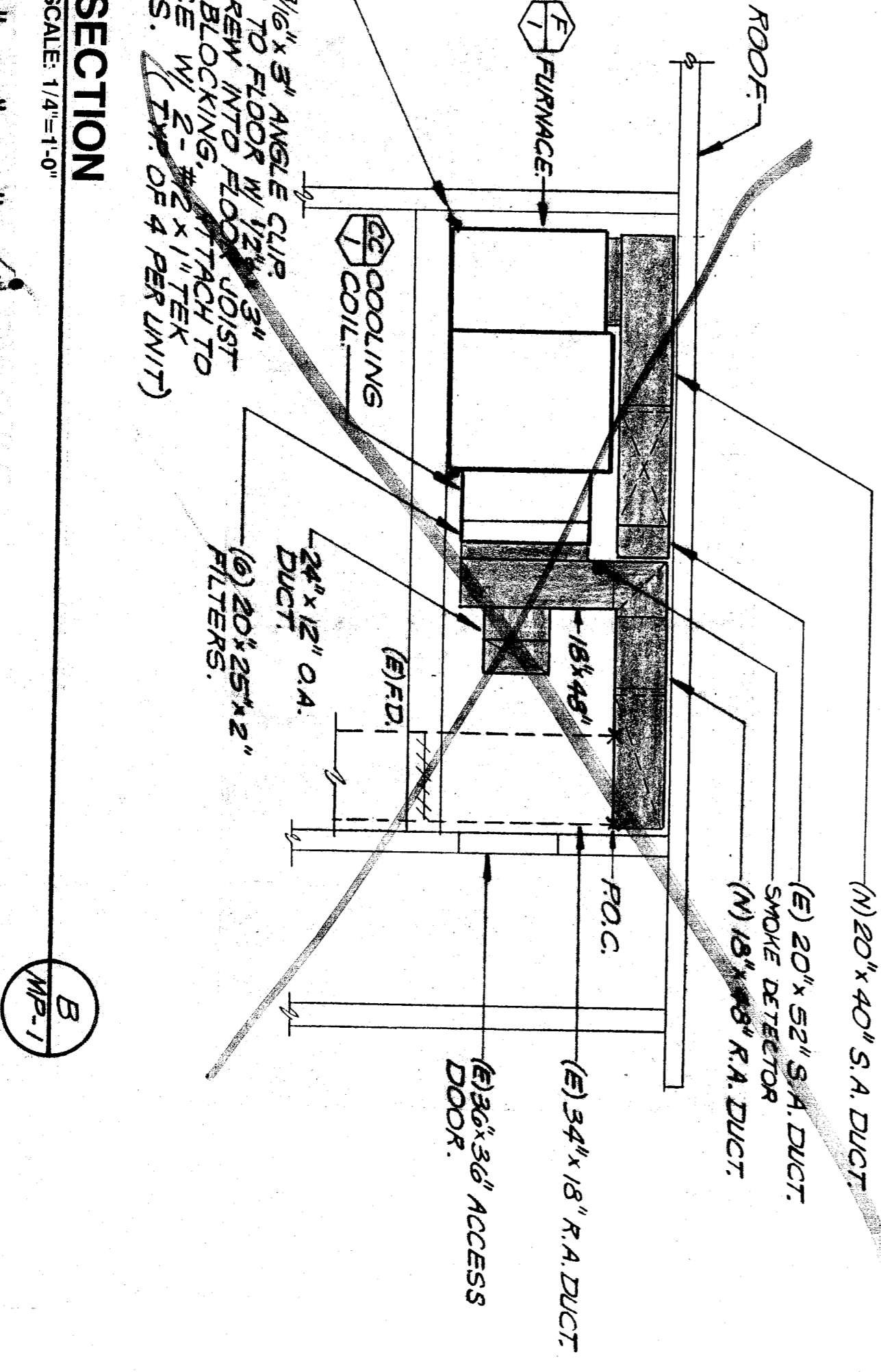


(2) 3/4" RL # (2) 3/8" AS DN. TIGHT AGAINST WALL. SEE SHT. MP-2 FOR CONTINUATION.

1" COND. DRAIN DN. TERMINATE AGAINST WALL. GRADE.



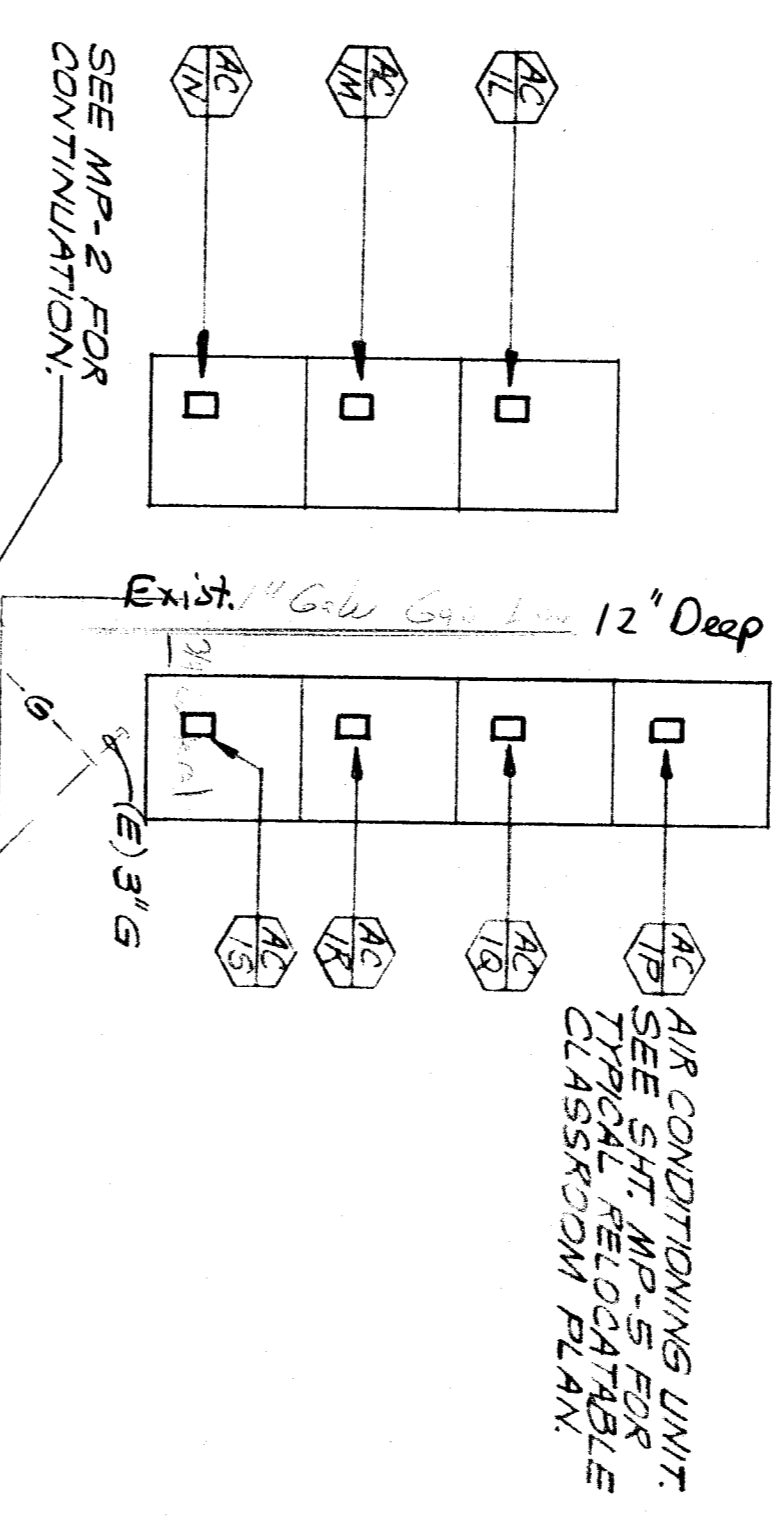
PARTIAL PLAN - BUILDING A FAN ROOM
SCALE: 1/4"=1'-0"



GENERAL PROJECT NOTE - COORDINATION OF WORK:

Layout of materials, equipment and systems is generally diagrammatic unless specifically dimensioned. Some work may be shown offset for clarity. The actual locations of all materials, piping, ductwork, fixtures, equipment, supports, etc. shall be carefully planned, prior to field work, to avoid all interferences with each other, or with structural and other work. To verify the accuracy of the layout, proper voltage and phase of all equipment with the Architect and the Engineer prior to the installation of any work or the ordering of any equipment.

- NOTES:**
1. PLUMBING CONTRACTOR TO VERIFY EXACT LOCATION AND DEPTH OF POINTS OF CONNECTION TO EXISTING UTILITIES.
 2. MINIMUM DOMESTIC WATER PIPE SIZE TO BE 3/4" UNLESS NOTED OTHERWISE. USE A REDUCING ELB. AT WALL IF NECESSARY.
 3. INSTALLATION OF SEWER, WATER, AND GAS SERVICES IN STREETS TO BE IN ACCORDANCE WITH GOVERNING AUTHORITY REQUIREMENTS.
- NOTE:** ROOF JOIST SHALL NOT BE CUT FOR DUCT PENETRATIONS THRU ROOF TRANSITION DUCT TO FIT BETWEEN JOIST.



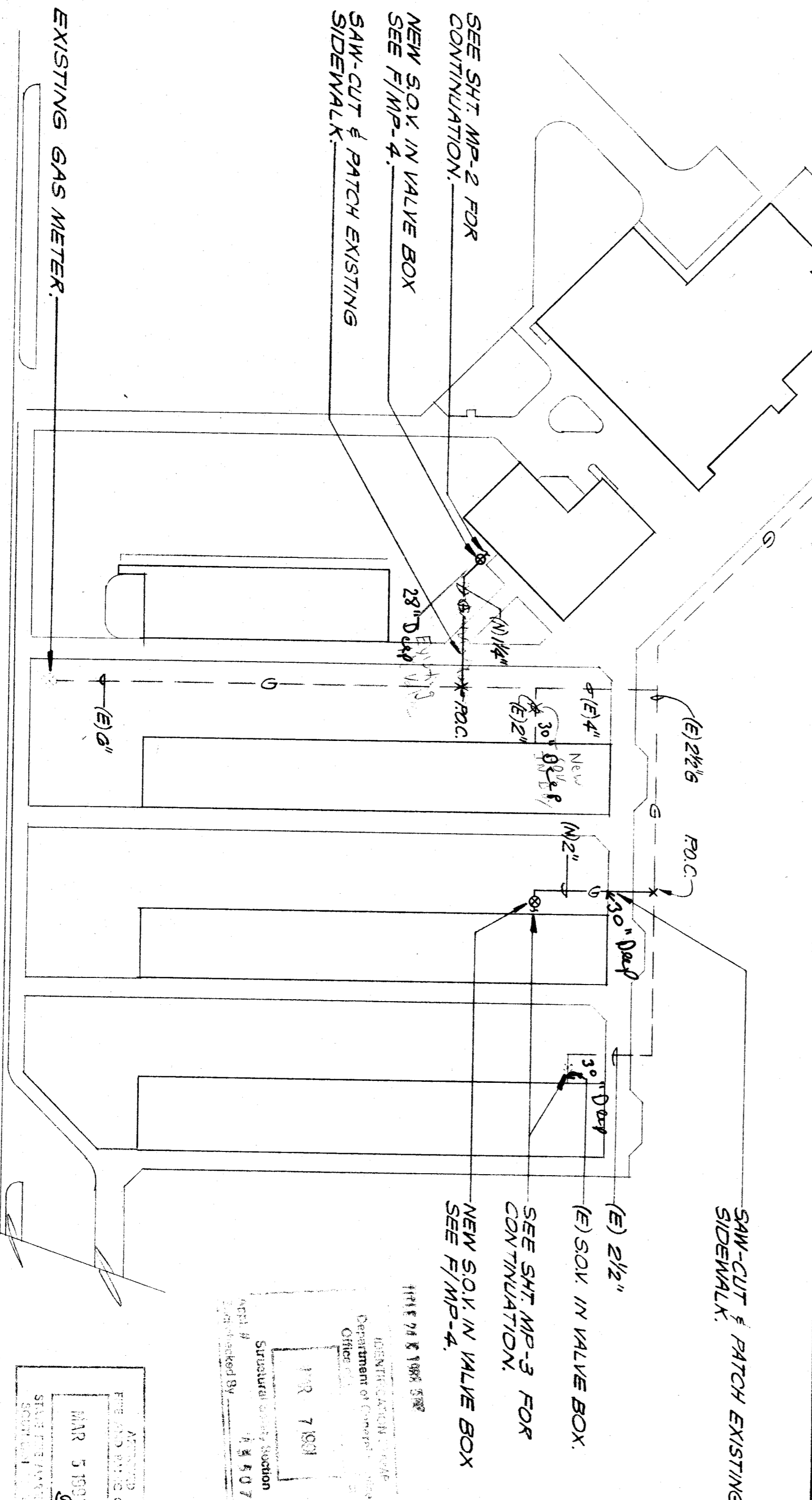
AIR CONDITIONING LEGEND		
SYMBOL	ITEM	ABBR.
○	ROUND DUCT	—
□	SHEET METAL DUCT	—
▭	DUCT WITH ACOUSTIC LINING	—
▭	SUPPLY AIR DUCT DROP	—
▭	RETURN AIR DUCT DROP	—
▭	RETURN AIR DUCT RISE	—
▭	SUPPLY AIR DUCT RISE	—
▭	EXHAUST AIR DUCT RISE	—
▭	TURNING VANES	TV
▭	VOLUME CONTROL DAMPER WITH LOCKING QUADRANT	VCD
▭	FIRE DAMPER WITH ACCESS PANEL	FD
▭	ACCESS PANEL	CPM
▭	CUBIC FEET OF AIR PER MINUTE	CFM
▭	THERMOSTAT @ +5'-0"	T'STAT
▭	DIRECTION OF FLOW	—
▭	SUPPLY AIR	SA
▭	RETURN AIR	RA
▭	EXHAUST AIR	EA
▭	PIPE OR DUCT TURN UP	OSA
▭	PIPE OR DUCT TURN DOWN	OSA
▭	BYPASS TRIP	BPT
▭	POINT OF CONNECTION	POC
▭	EXISTING (DESIGNATED)	(E)

PLUMBING LEGEND		
SYMBOL	ITEM	ABBR.
○	SOIL OR WASTE	S or W
○	VENT	V
○	VENT THRU ROOF	VR
○	DOMESTIC COLD WATER	CM
○	DOMESTIC HOT WATER	HM
○	CONDENSATE DRAIN	CD
○	NATURAL GAS	G
○	EXISTING PIPING	—
○	FLOOR CLEANOUT	FCO
○	CLEANOUT TO GRADE	COG
○	WALL CLEANOUT	KCO
○	PIPING TURN UP	—
○	PIPING TURN DOWN	—
○	POINT OF CONNECTION	POC
○	NEW	—
○	EXISTING	(E)
○	ABOVE CEILING	ABV CLG
○	BELOW FLOOR	BEL FLR
○	BELOW GRADE	BEL GR
○	TYPICAL	TYP
○	CONT.	CONT
○	SHUT-OFF VALVE IN BOX	SOV
○	GATE VALVE	—
○	CHECK VALVE	—
○	PLUG VALVE	—

ALL MECHANICAL AND ELECTRICAL EQUIPMENT SHALL BE BRACED OR ANCHORED TO RESIST A HORIZONTAL FORCE ACTING IN ANY DIRECTION USING THE FOLLOWING CRITERIA:

FIXED EQUIPMENT ON GRADE 30% OF OPERATING WEIGHT

FOR FLEXIBLY MOUNTED EQUIPMENT USE 4 X THE ABOVE VALUES. SIMILARNESS VERTICAL FORCE WHERE ANCHORAGE DETAILS ARE NOT SHOWN ON THE DRAWINGS, THE FIELD INSTALLATION SHALL BE SUBJECT TO THE APPROVAL OF THE MECHANICAL ENGINEER AND THE FIELD REPRESENTATIVE OF THE OFFICE OF THE STAFF ARCHITECT.



PARTIAL MECHANICAL SITE PLAN
SCALE: 1"=40'

DATE: 7/2/91
PROJECT: 440-289

OFFICE OF ARCHITECTURAL ADDRESS COMPLIANCE SECTION

DATE: 7/2/91

PROJECT: 440-289

DATE: 7/2/91

PROJECT: 440-289

pechin associates aia
1400 easton drive suite 138
bakersfield, ca 93309 (805) 322-2021

Frank West Elementary School HVAC
Bakersfield City School District

Donald R. Lawrence & Associates
CONSULTING MECHANICAL ENGINEERS, INCORPORATED

DATE	ISSUE FOR
DATE	REVISION

THESE DRAWINGS, RELATED SPECIFICATIONS, IDEAS, DESIGNS, AND ARRANGEMENTS REPRESENTED THEREBY ARE AND SHALL REMAIN THE PROPERTY OF THE ARCHITECT, AND NO PART THEREOF SHALL BE COPIED, DISCLOSED TO OTHERS OR USED IN CONNECTION WITH ANY WORK OR PROJECT OTHER THAN THE SPECIFIC PROJECT FOR WHICH THEY HAVE BEEN PREPARED AND DEVELOPED WITHOUT THE WRITTEN CONSENT OF THE ARCHITECT. VISUAL CONTACT WITH THESE DRAWINGS OR PHOTOGRAPHIC REPRODUCTION SHALL CONSTITUTE CONCLUSIVE EVIDENCE OF ACCEPTANCE OF THESE RESTRICTIONS.

WRITTEN DIMENSIONS ON THESE DRAWINGS SHALL HAVE PRECEDENCE OVER SCALED DIMENSIONS. CONTRACTORS SHALL VERIFY AND BE RESPONSIBLE FOR ALL DIMENSIONS AND CONDITIONS ON THE JOB AND THIS OFFICE MUST BE NOTIFIED OF ANY VARIATIONS FROM THE DIMENSIONS AND CONDITIONS SHOWN BY THESE DRAWINGS.

DETAILED SHOP DRAWINGS MUST BE SUBMITTED TO THIS OFFICE FOR REVIEW BEFORE PROCEEDING WITH THE FABRICATION OF ANY PRODUCT TO BE INCLUDED IN THIS PROJECT.