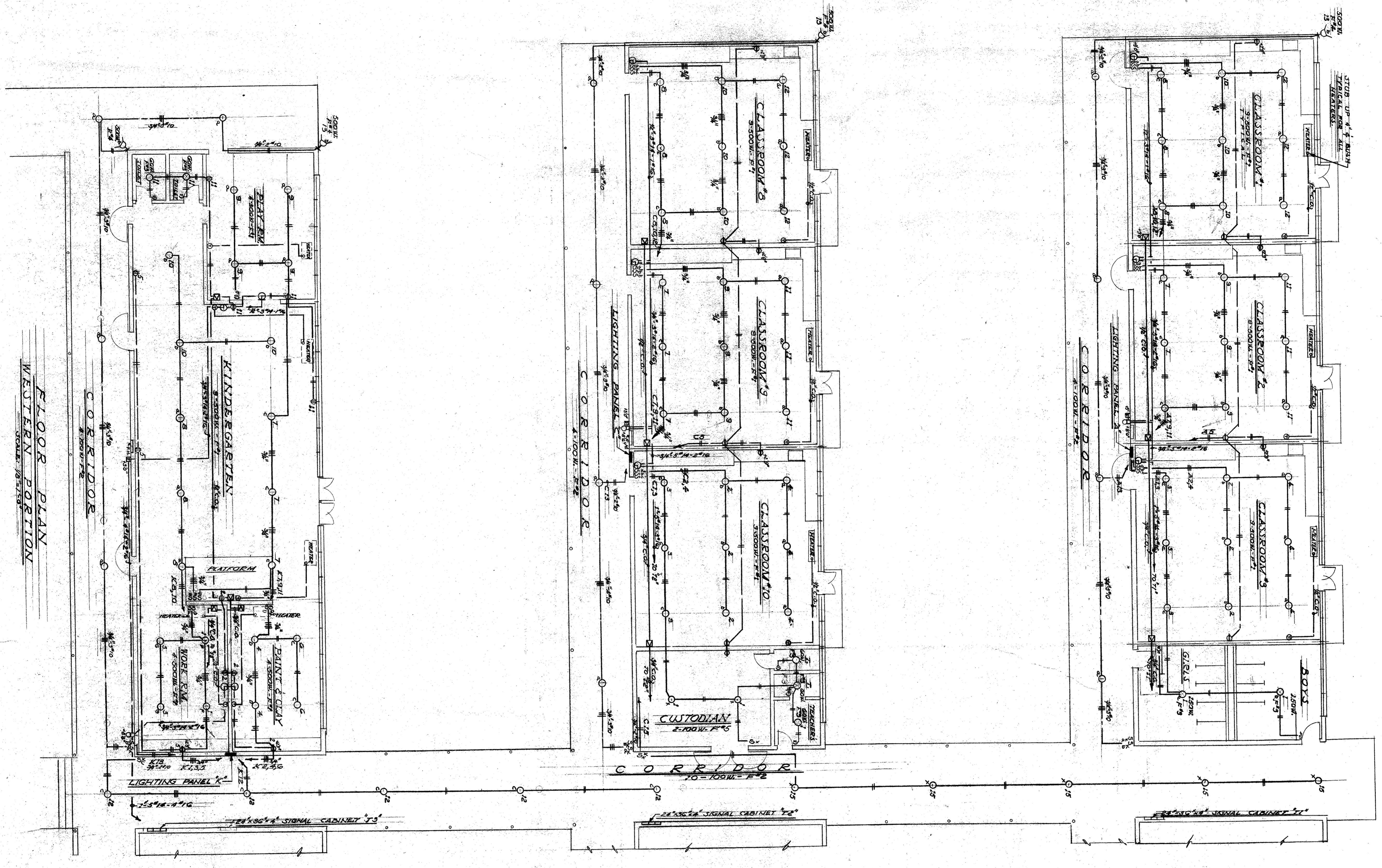


NOTE: CONTRACTOR IS TO VERIFY ALL DIMENSIONS ON THE WORK. THIS DRAWING IS THE PROPERTY OF THE ARCHITECT AND MUST BE RETURNED ON COMPLETION OF THE CONTRACT.



PANEL X DIAGRAM
TOTAL LOAD 20800W

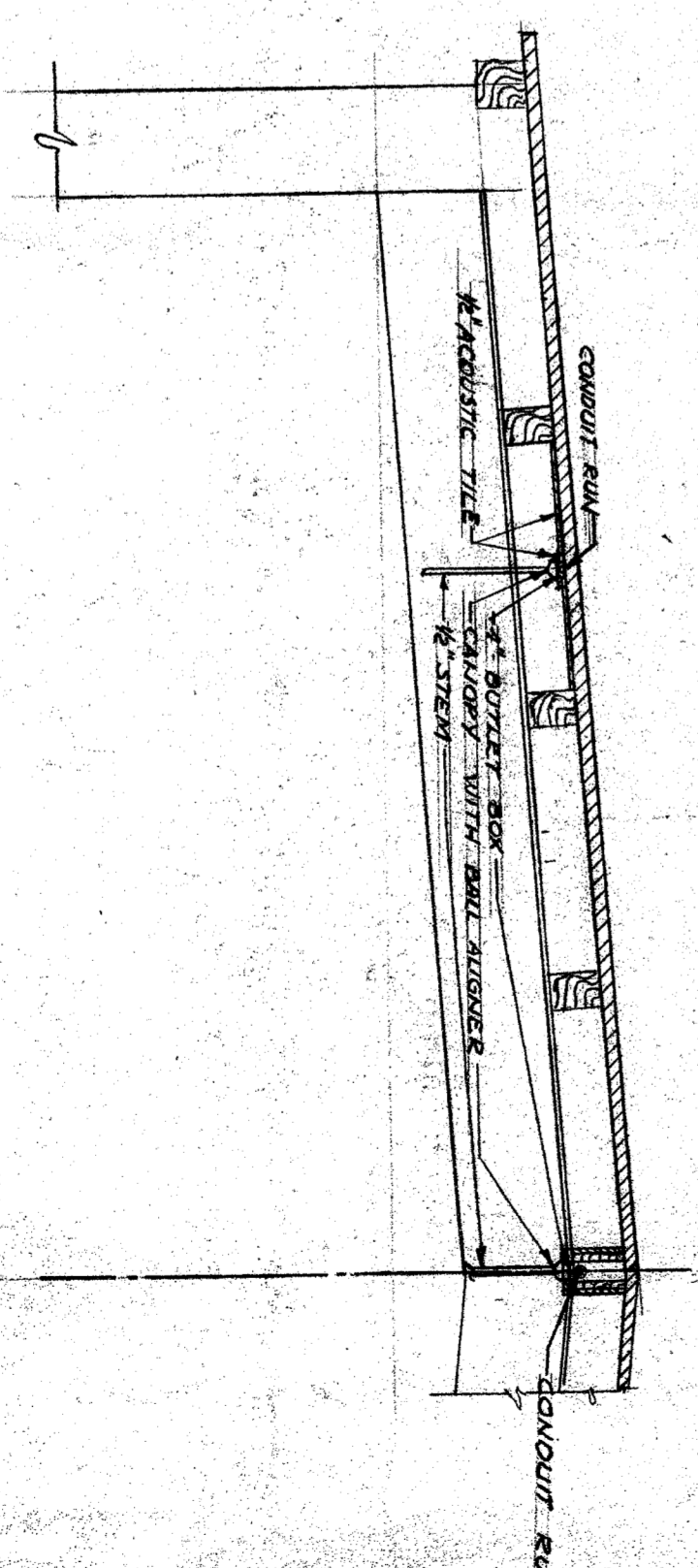
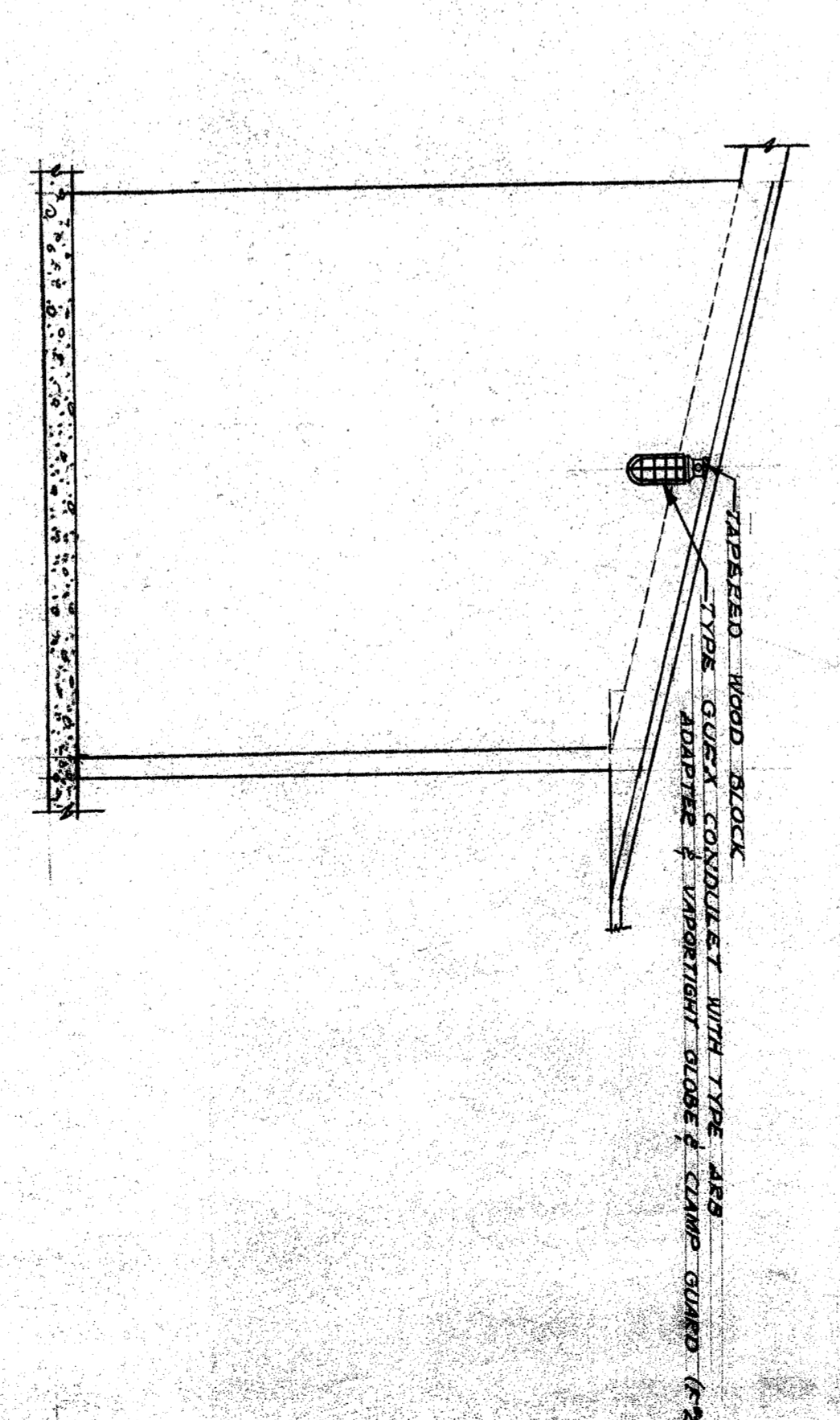
| NO. | LOAD | TYPE |
|-----|-------|-------|
| 1 | 1500W | 1500W |
| 2 | 1500W | 1500W |
| 3 | 1500W | 1500W |
| 4 | 1500W | 1500W |
| 5 | 1500W | 1500W |
| 6 | 1500W | 1500W |
| 7 | 1500W | 1500W |
| 8 | 1500W | 1500W |
| 9 | 1500W | 1500W |
| 10 | 1500W | 1500W |
| 11 | 1500W | 1500W |
| 12 | 1500W | 1500W |
| 13 | 1500W | 1500W |
| 14 | 1500W | 1500W |
| 15 | 1500W | 1500W |
| 16 | 1500W | 1500W |
| 17 | 1500W | 1500W |
| 18 | 1500W | 1500W |
| 19 | 1500W | 1500W |
| 20 | 1500W | 1500W |
| 21 | 1500W | 1500W |
| 22 | 1500W | 1500W |
| 23 | 1500W | 1500W |
| 24 | 1500W | 1500W |
| 25 | 1500W | 1500W |
| 26 | 1500W | 1500W |
| 27 | 1500W | 1500W |
| 28 | 1500W | 1500W |
| 29 | 1500W | 1500W |
| 30 | 1500W | 1500W |
| 31 | 1500W | 1500W |
| 32 | 1500W | 1500W |
| 33 | 1500W | 1500W |
| 34 | 1500W | 1500W |
| 35 | 1500W | 1500W |
| 36 | 1500W | 1500W |
| 37 | 1500W | 1500W |
| 38 | 1500W | 1500W |
| 39 | 1500W | 1500W |
| 40 | 1500W | 1500W |
| 41 | 1500W | 1500W |
| 42 | 1500W | 1500W |
| 43 | 1500W | 1500W |
| 44 | 1500W | 1500W |
| 45 | 1500W | 1500W |
| 46 | 1500W | 1500W |
| 47 | 1500W | 1500W |
| 48 | 1500W | 1500W |
| 49 | 1500W | 1500W |
| 50 | 1500W | 1500W |

PANEL C DIAGRAM
TOTAL LOAD 20800W

| NO. | LOAD | TYPE |
|-----|-------|-------|
| 1 | 1500W | 1500W |
| 2 | 1500W | 1500W |
| 3 | 1500W | 1500W |
| 4 | 1500W | 1500W |
| 5 | 1500W | 1500W |
| 6 | 1500W | 1500W |
| 7 | 1500W | 1500W |
| 8 | 1500W | 1500W |
| 9 | 1500W | 1500W |
| 10 | 1500W | 1500W |
| 11 | 1500W | 1500W |
| 12 | 1500W | 1500W |
| 13 | 1500W | 1500W |
| 14 | 1500W | 1500W |
| 15 | 1500W | 1500W |
| 16 | 1500W | 1500W |
| 17 | 1500W | 1500W |
| 18 | 1500W | 1500W |
| 19 | 1500W | 1500W |
| 20 | 1500W | 1500W |
| 21 | 1500W | 1500W |
| 22 | 1500W | 1500W |
| 23 | 1500W | 1500W |
| 24 | 1500W | 1500W |
| 25 | 1500W | 1500W |
| 26 | 1500W | 1500W |
| 27 | 1500W | 1500W |
| 28 | 1500W | 1500W |
| 29 | 1500W | 1500W |
| 30 | 1500W | 1500W |
| 31 | 1500W | 1500W |
| 32 | 1500W | 1500W |
| 33 | 1500W | 1500W |
| 34 | 1500W | 1500W |
| 35 | 1500W | 1500W |
| 36 | 1500W | 1500W |
| 37 | 1500W | 1500W |
| 38 | 1500W | 1500W |
| 39 | 1500W | 1500W |
| 40 | 1500W | 1500W |
| 41 | 1500W | 1500W |
| 42 | 1500W | 1500W |
| 43 | 1500W | 1500W |
| 44 | 1500W | 1500W |
| 45 | 1500W | 1500W |
| 46 | 1500W | 1500W |
| 47 | 1500W | 1500W |
| 48 | 1500W | 1500W |
| 49 | 1500W | 1500W |
| 50 | 1500W | 1500W |

PANEL X DIAGRAM
TOTAL LOAD 20800W

| NO. | LOAD | TYPE |
|-----|-------|-------|
| 1 | 1500W | 1500W |
| 2 | 1500W | 1500W |
| 3 | 1500W | 1500W |
| 4 | 1500W | 1500W |
| 5 | 1500W | 1500W |
| 6 | 1500W | 1500W |
| 7 | 1500W | 1500W |
| 8 | 1500W | 1500W |
| 9 | 1500W | 1500W |
| 10 | 1500W | 1500W |
| 11 | 1500W | 1500W |
| 12 | 1500W | 1500W |
| 13 | 1500W | 1500W |
| 14 | 1500W | 1500W |
| 15 | 1500W | 1500W |
| 16 | 1500W | 1500W |
| 17 | 1500W | 1500W |
| 18 | 1500W | 1500W |
| 19 | 1500W | 1500W |
| 20 | 1500W | 1500W |
| 21 | 1500W | 1500W |
| 22 | 1500W | 1500W |
| 23 | 1500W | 1500W |
| 24 | 1500W | 1500W |
| 25 | 1500W | 1500W |
| 26 | 1500W | 1500W |
| 27 | 1500W | 1500W |
| 28 | 1500W | 1500W |
| 29 | 1500W | 1500W |
| 30 | 1500W | 1500W |
| 31 | 1500W | 1500W |
| 32 | 1500W | 1500W |
| 33 | 1500W | 1500W |
| 34 | 1500W | 1500W |
| 35 | 1500W | 1500W |
| 36 | 1500W | 1500W |
| 37 | 1500W | 1500W |
| 38 | 1500W | 1500W |
| 39 | 1500W | 1500W |
| 40 | 1500W | 1500W |
| 41 | 1500W | 1500W |
| 42 | 1500W | 1500W |
| 43 | 1500W | 1500W |
| 44 | 1500W | 1500W |
| 45 | 1500W | 1500W |
| 46 | 1500W | 1500W |
| 47 | 1500W | 1500W |
| 48 | 1500W | 1500W |
| 49 | 1500W | 1500W |
| 50 | 1500W | 1500W |



CASTRO LANE SCHOOL
FOR
BAKERSFIELD CITY SCHOOL DIST.
CALIFORNIA

CHARLES H. BIGGAR
A.I.A. ARCHITECT
& ASSOCIATES
HABERFELDE BUILDING
BAKERSFIELD CALIFORNIA

5813
APPROVED: [Signature]
DATE: 5-27-48

STATE OF CALIFORNIA DEPARTMENT OF PUBLIC WORKS
DIVISION OF ARCHITECTURE
5813