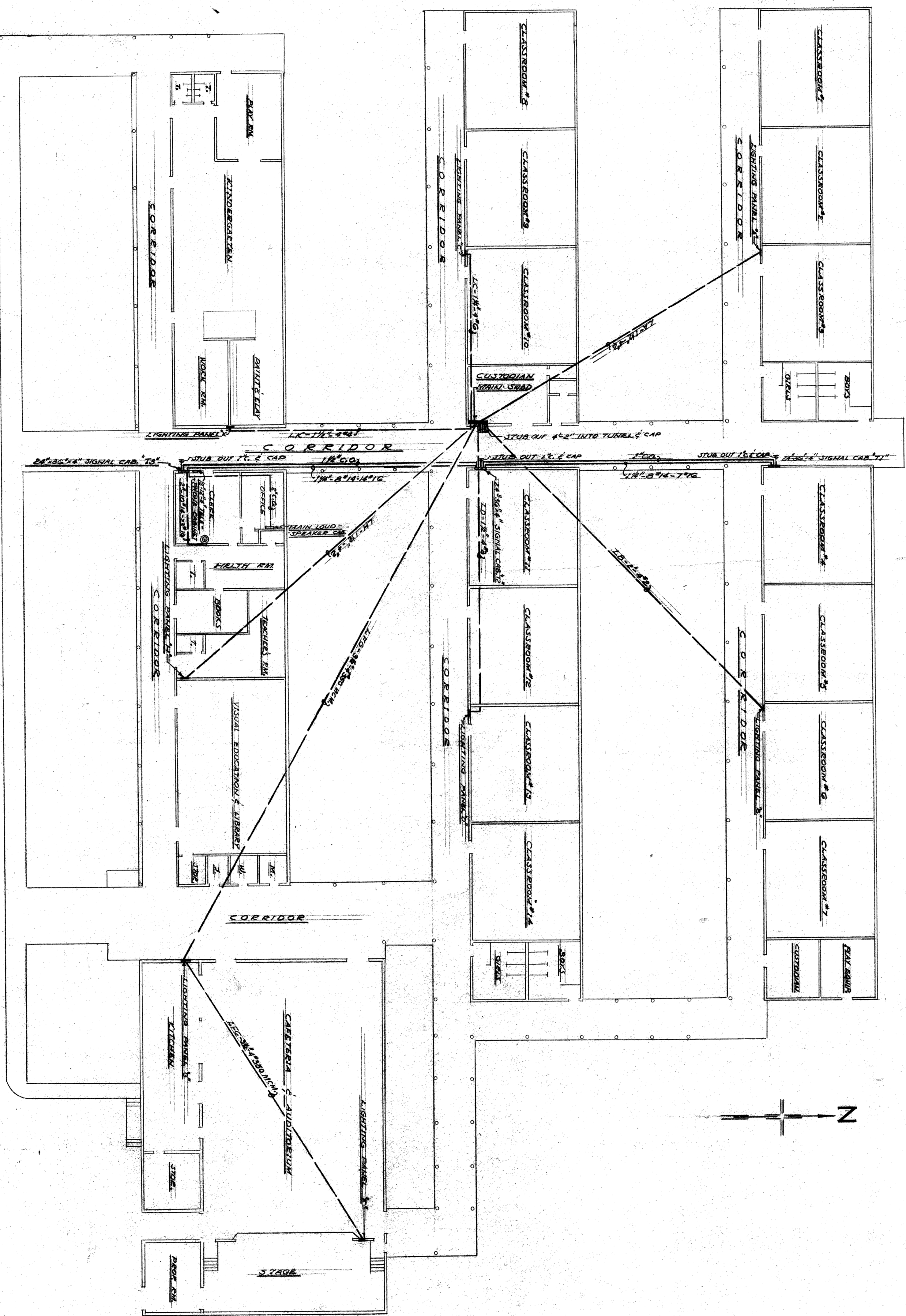


NOTE: CONSTRUCTION OF THIS PROJECT IS SUBJECT TO THE APPROVAL OF THE STATE OF CALIFORNIA AND MUST BE RETURNED ON COMPLETION OF THE CONTRACT.



SITE PLAN
SCALE 1/8" = 1'-0"

STATE OF CALIFORNIA
DIVISION OF ARCHITECTURE
APPROVED
5-27-48
6813

CASTRO LANE SCHOOL
FOR
BAKERSFIELD CITY SCHOOL DIST.
BAKERSFIELD CALIFORNIA

CHARLES H. BIGGAR
A.I.A. ARCHITECT
& ASSOCIATES
HABERFELDE BUILDING
BAKERSFIELD CALIFORNIA

DRAWN
REVISION
E2