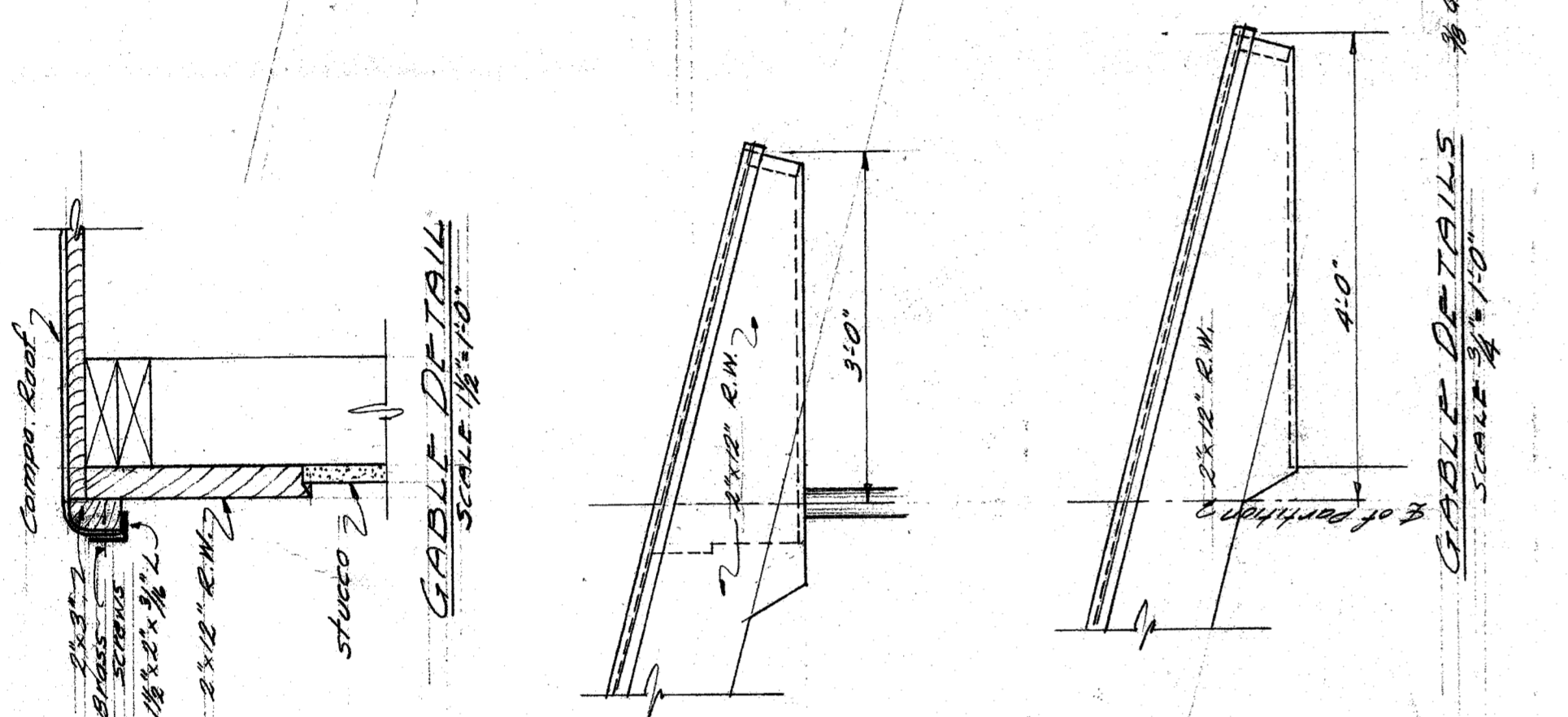
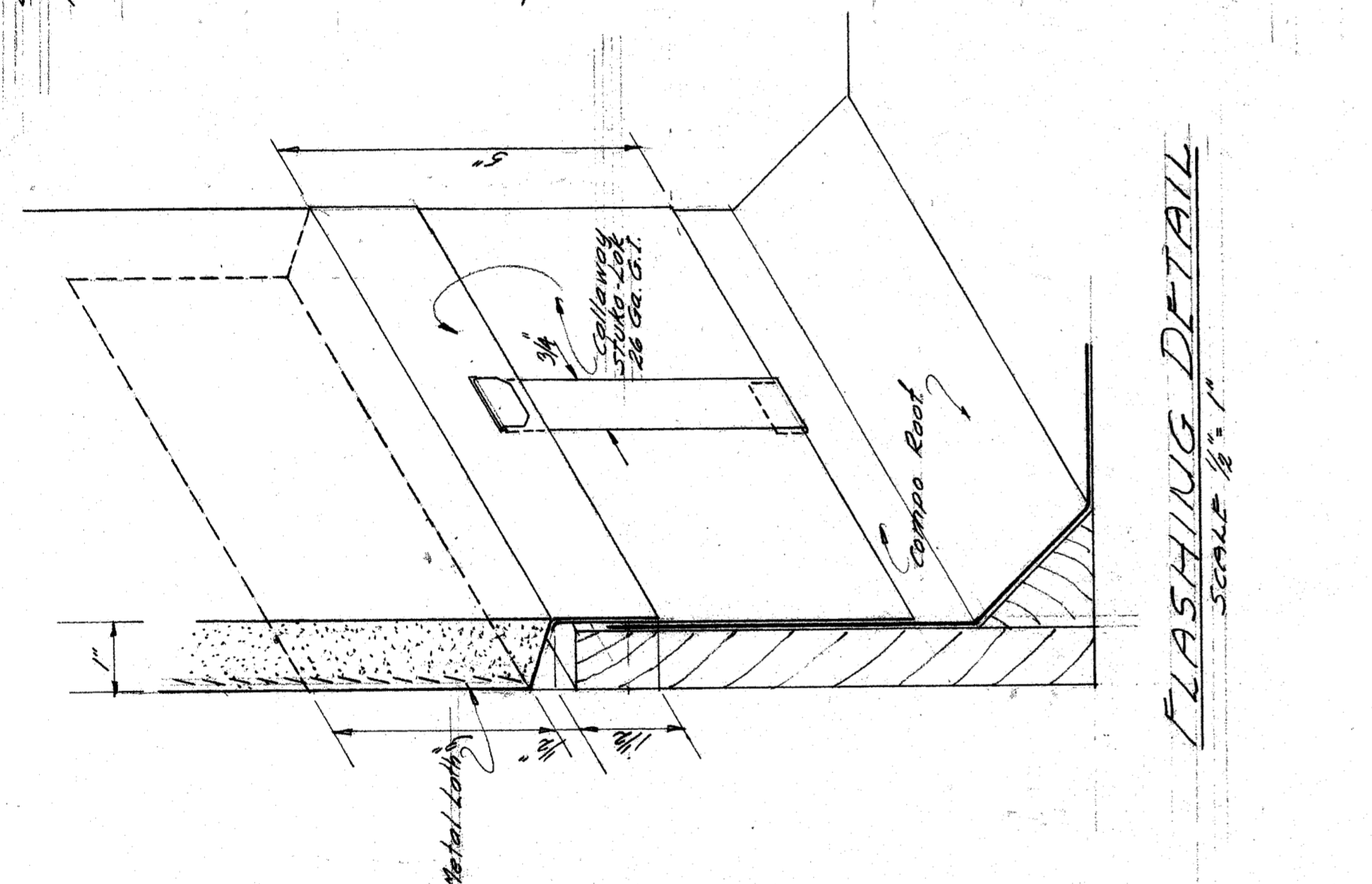


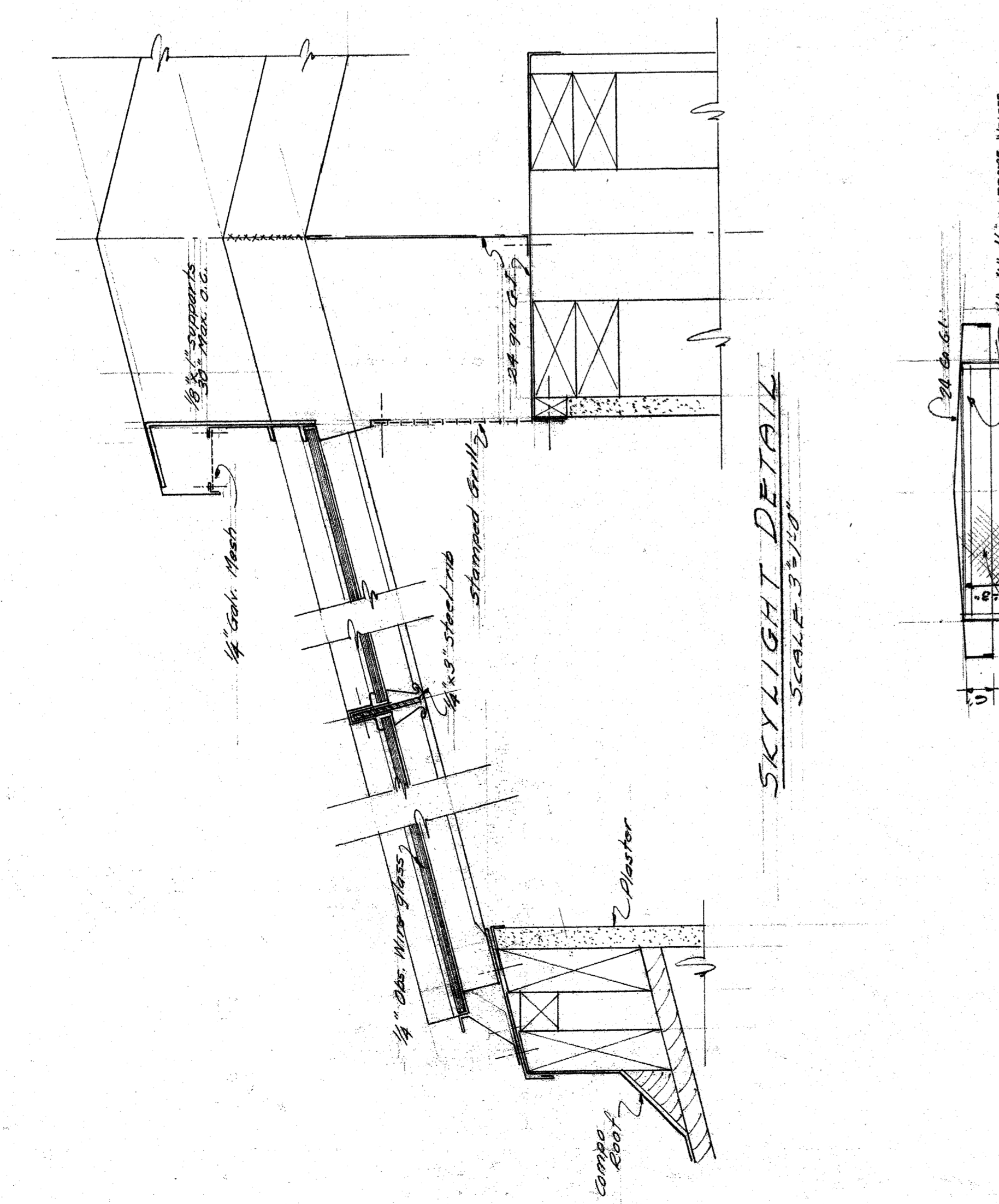
CORNICE - U WALL of C.R.
SCALE 1/8" = 1'-0"



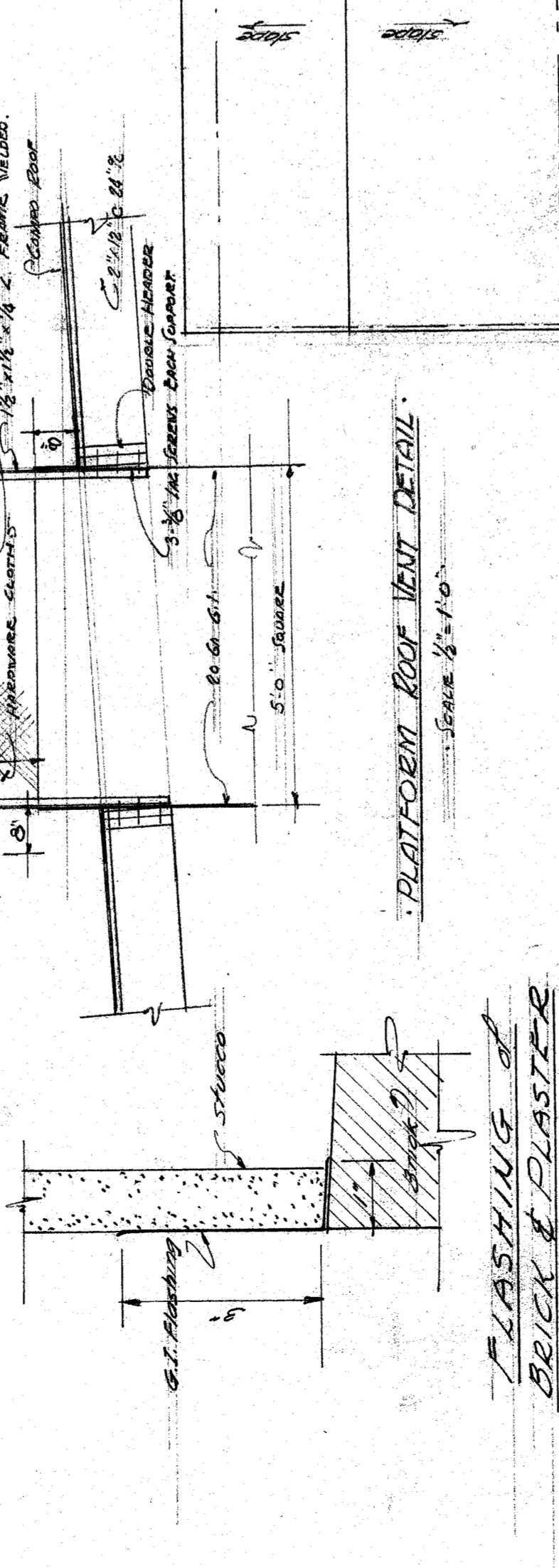
GABLE DETAILS
SCALE 1/8" = 1'-0"



FLASHING DETAIL
SCALE 1/8" = 1'-0"

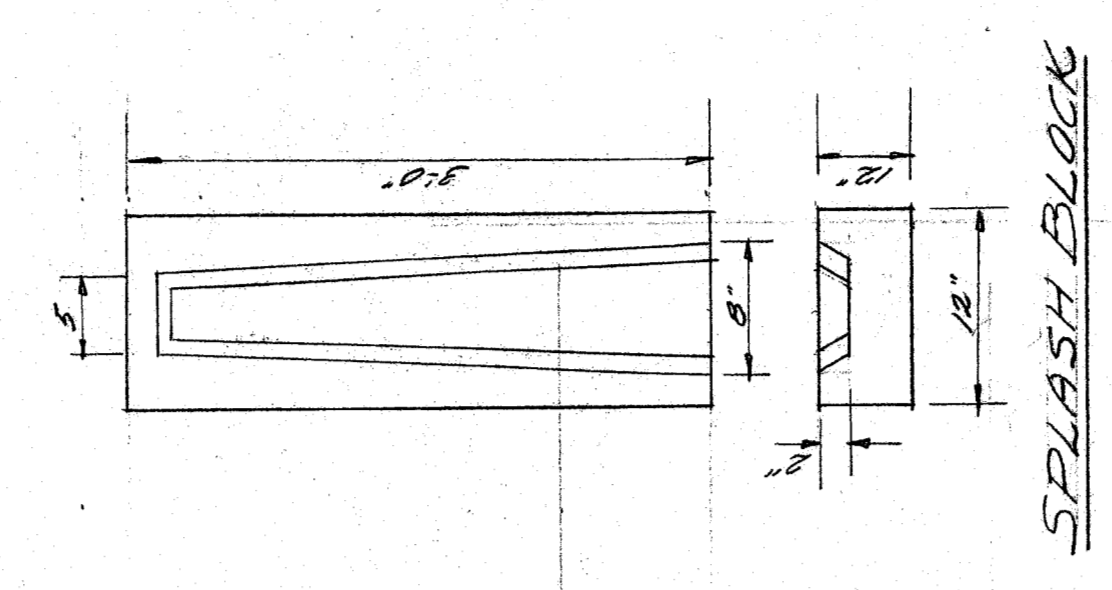


SKYLIGHT DETAIL
SCALE 3/8" = 1'-0"

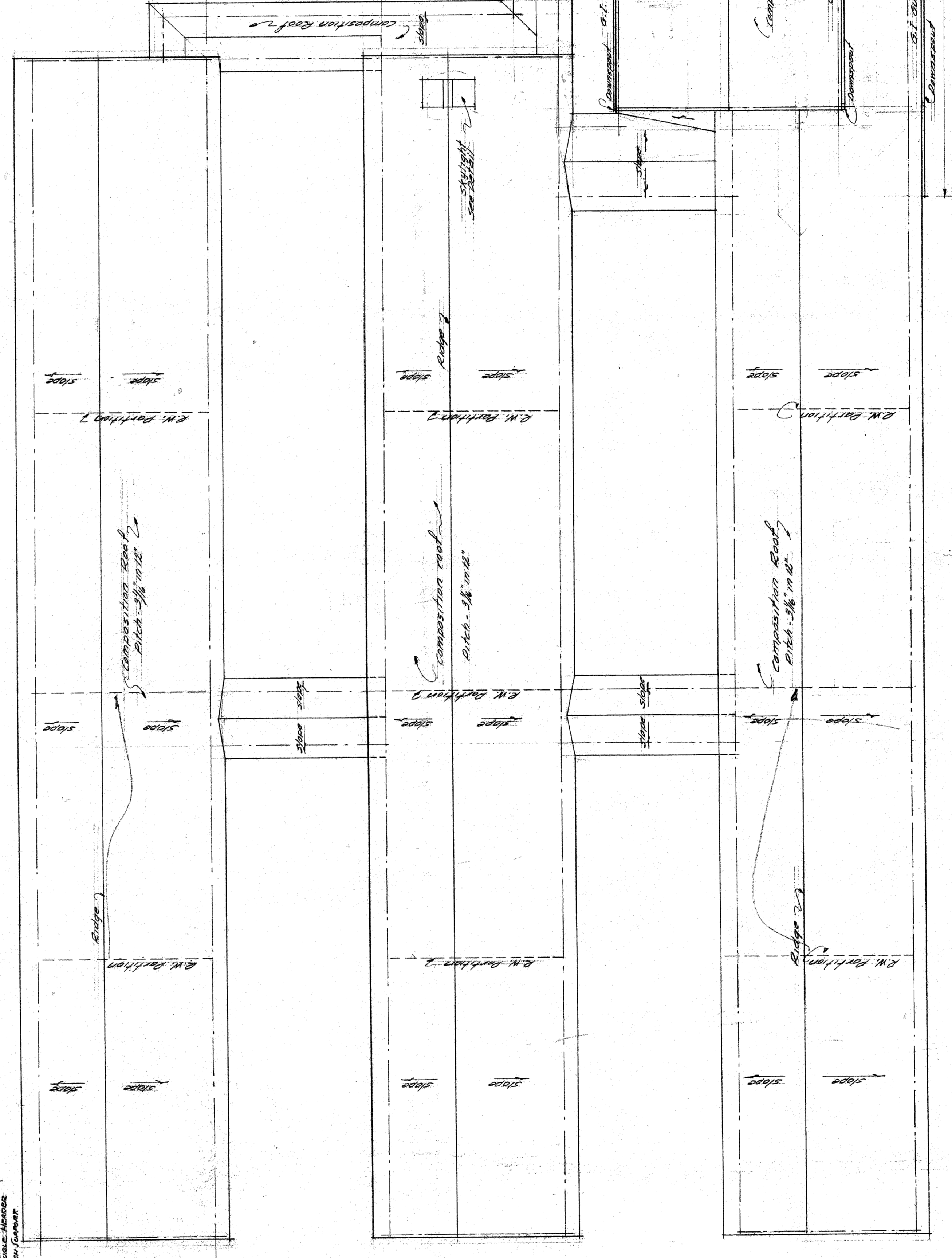


PLATFORM ROOF VENT DETAIL
SCALE 1/8" = 1'-0"

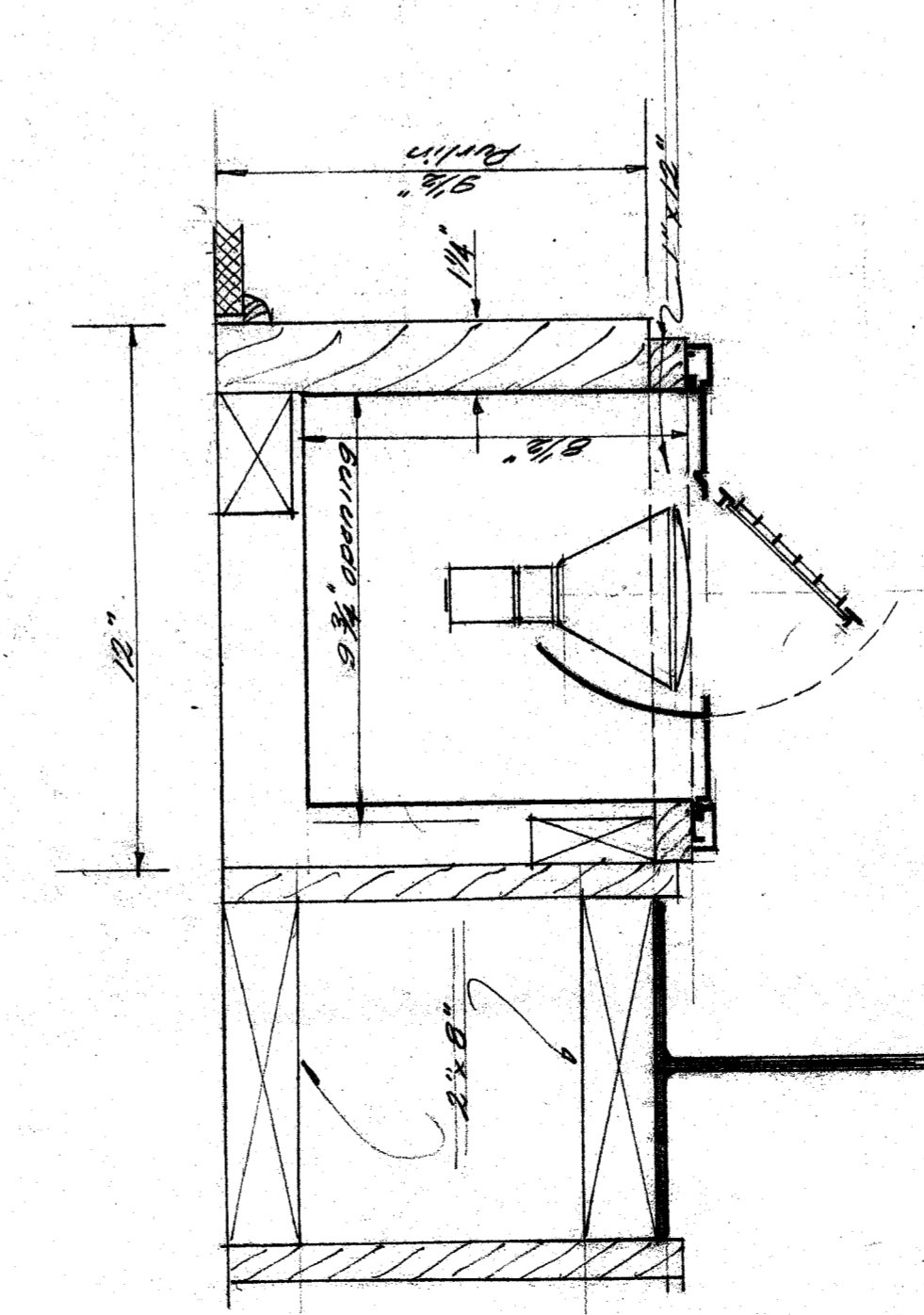
FLASHING of
BRICK & PLASTER



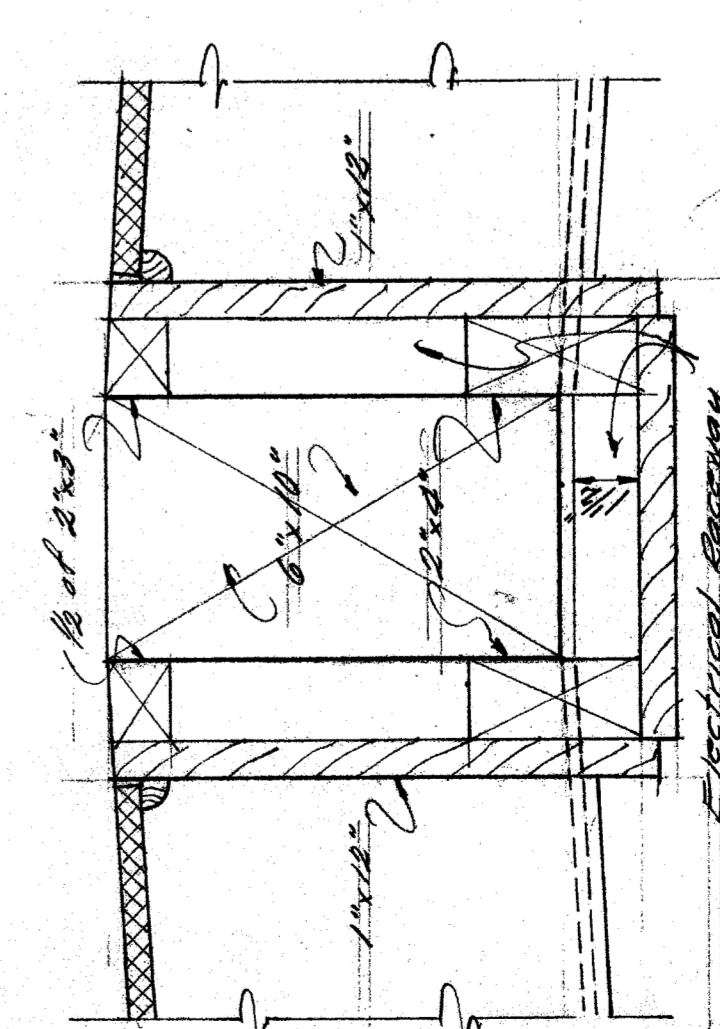
SPLASH BLOCK
SCALE 1/8" = 1'-0"



ROOF PLAN
SCALE 1/8" = 1'-0"



FLOOD LAMP RECESS
DETAIL
SCALE 3/8" = 1'-0"
SUBMITTING



GUTTER
DETAIL
SCALE 3/8" = 1'-0"
ELECTRICAL MECHANIC

Note: All other spaces shall be
filled with 2x4 S.M. or 2x6 S.M.
as shown on attached drawings
gaining with 5/8" S.M. ceiling wire.

C.B. Biggar
CHARLES H. BIGGAR
A.I.A. ARCHITECT
& ASSOCIATE
HABERFELDE BUIL
BAKERSFIELD CALIF

CASTRO LANE SCHOOL
FOR
BAKERSFIELD CITY SCHOOL DIST.
CALIFORNIA

APPROVED
BAKERSFIELD SCHOOL DIST.
JUL 15 1948
Ray [Signature]

APPROVED
COUNTY SUPERINTENDENT
OF SCHOOLS
1948

DIVISION OF ARCHITECTURE
STATE OF CALIFORNIA DEPARTMENT OF PUBLIC WORKS
DIVISION OF ARCHITECTURE
APPROVED
5813 [Signature]

DIVISION OF SCHOOL HOUSE PLANNING

NOTE: CONTRACTOR IS TO VERIFY ALL DIMENSIONS ON THE WORK
AND REPORT TO THE ARCHITECT AND
MUST BE RETURNED ON COMPLETION OF THE CONTRACT.