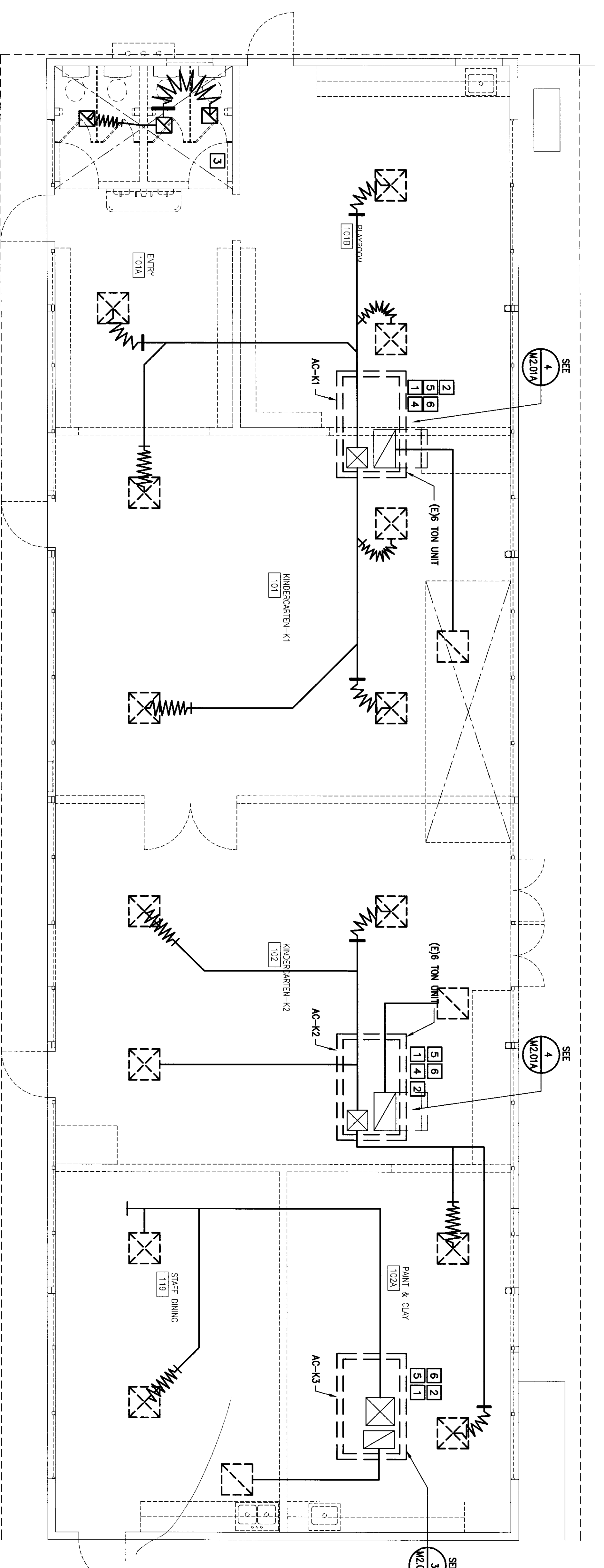


MECHANICAL RECONSTRUCTION PLAN -
BUILDING 'A' - KINDERGARTEN
SCALE: 1/4"=1'-0"

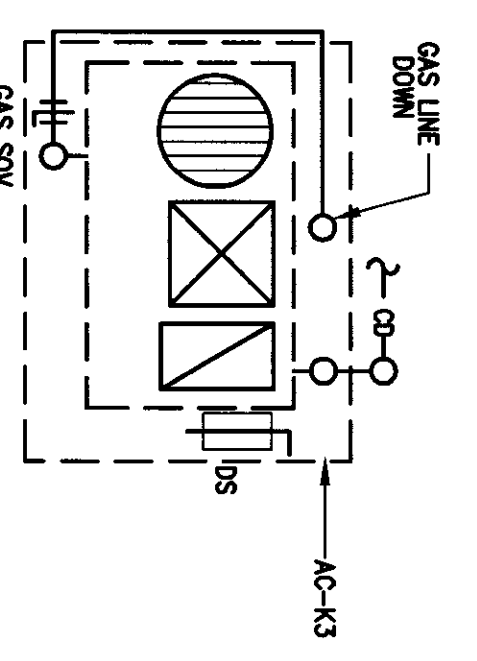
ROOM AIR BALANCE					
UNIT	SA	RA	OSA	EA	NET
AC-K1	2100	1650	450	200	+250
AC-K2	1825	1465	300	0	+300
(E)	700	550	+150	0	+150
TOTALS	4625	3300	+950	-200	+750

- RECONSTRUCTION NOTES
- 12"x12" O.D. 4000N, 4-WAY
 - 10"x10" O.D. 2250N, 4-WAY
 - 12"x12" O.D. 2500N, 4-WAY
 - 12"x12" O.D. 3000N, 4-WAY
 - 18"x18" P.A.S. 8000N
 - 12"x12" P.A.S. 8000N
 - 18"x18" P.A.S. 8000N
 - 14"x14" P.A.S. 5000N
 - 12"x12" P.A.S. 4100N
 - RE-DUCT ROOF MOUNTED AC UNIT
 - RE-DUCT ROOF MOUNTED AC UNIT
 - UNDER DOOR GAPS BY 1/2" ABOVE FLOOR
 - RE-MOUNTED THERMOSTATS
 - ROOF MOUNTED RELIEF VENT W/ 24"x24" GRILLE IN CEILING
 - BRASS TUBER MOUNTED NEXT TO OR PART OF THERMOSTAT
 - 12"x12" O.D. 4000N, 4-WAY
 - 12"x12" O.D. 3000N, 3-WAY
 - 14"x14" P.A.S. 5000N
 - ROOF MOUNTED EXHAUST FAN 120-1-00, 1/8HP W/ CURB & BOD
 - 10"x10" TUBE LOCKE EXHAUST OUTLET MINIMUM OF 10" FROM CURB W/ WAKE OR SCREEN FAN 3/4" EXHAUST
 - REMOVE RECTANGULAR DUCT WHEN EXISTING CLEARANCES NOT ADEQUATE FOR ROUND DUCT. RECONSTRUCT DUCT TO 1/4" IN
 - 21)

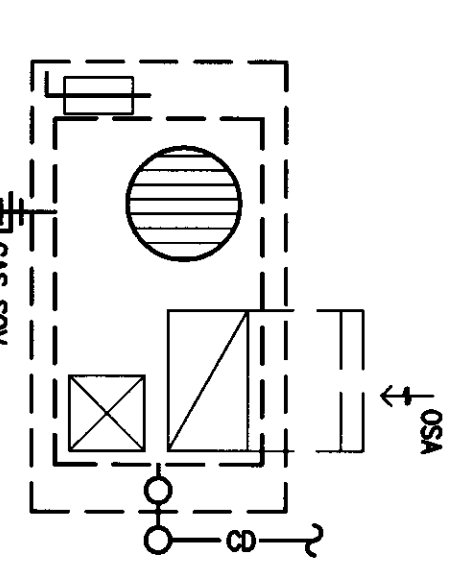


MECHANICAL DEMOLITION PLAN -
BUILDING 'A' - KINDERGARTEN
SCALE: 1/4"=1'-0"

- DEMOLITION NOTES
- 1 EXISTING AC UNIT TO REMAIN IN SERVICE
 - 2 EXACT LOCATION TO BE RED VERIFIED
 - 3 DISCONNECT & REMOVE EXISTING EXHAUST UNIT OFF FLOOR CONDUIT & SET IN WALL IN 1'-BOX
 - 4 REMOVE DUCTS PLAN TO INSTALL NEW DUCT PER EXACT LOCATION ON SITE
 - 5 REMOVE THERMOSTATS & WIRING FROM WALL. STORE IN A SAFE LOCATION & REUSE FOR DEMOLITION WORK. SEE CONTROL WIRING SCHEDULE.
 - 6



EXISTING 2-TON UNIT UTILITY CONNECTIONS
SCALE: 3/8"=1'-0"



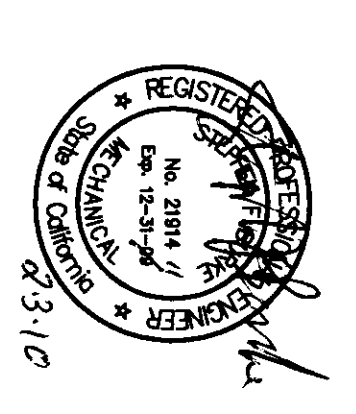
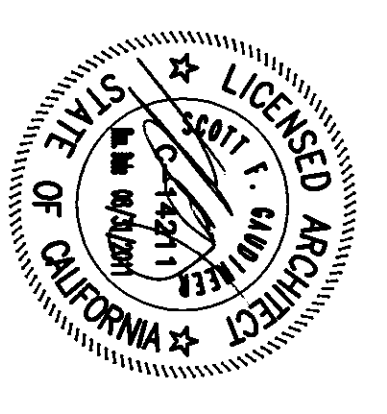
EXISTING AC-K1&K2 UTILITY CONNECTIONS
SCALE: 3/8"=1'-0"

FLEWELLING & MOODY
architects | education

HEADQUARTERS OFFICE:
41 South Lake Avenue, Suite 100
Pasadena, CA 91107
Phone: 626.799.8887
Fax: 626.799.8887
Email: info@flewellingmoody.com

ANTIOPE VALLEY OFFICE:
303 West Lincoln Boulevard
881-840771 Fax: 861-842840
Email: info@flewellingmoody.com

An Employee Owned Corporation



AGENCY:
IDENTIFICATION STAMP
DIV OF THE STATE ARCHITECT
APPROX 112817
AC - FAS PRESS, R-2
DATE: MAY 8 2010

No.	Date	Description

MODERNIZATION PROJECT AT
EVERGREEN ELEMENTARY SCHOOL
2000 N. STATE AVE. SUITE
2000 PASADENA, CA 91101

BANDERFIELD CITY SCHOOL DISTRICT

**BUILDING 'A' - KINDERGARTEN
MECHANICAL DEMOLITION AND
RECONSTRUCTION PLANS**

Job No. 1904
Date 1-28-2010
M2.01A