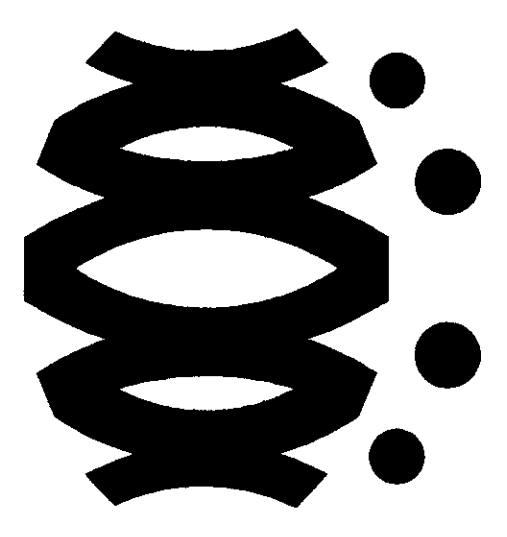


FIRE ALARM PLAN NOTES

◆ SUPPONE FIRE ALARM CALLERS/EVERY 5' W/ARD HOOKS, AT LEAST 8' ABOVE CEILING, TYPICAL. FIRE ALARM CALLERS AND OTHER SUPPONES SHALL BE HAND MOUNTED FROM CEILING OR FROM WALL SURFACES, 11'-0" H.

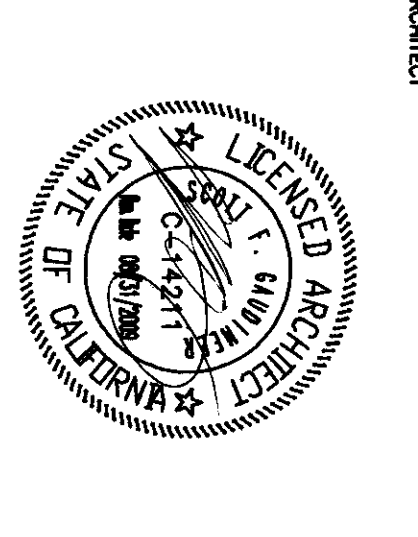


FLEWELLING & MOODY
architects + education

HEADQUARTERS OFFICE:
141 South Main Avenue, 2nd Floor
Oakland, CA 94612
Phone: 510.434.4444
Fax: 510.434.4444
Email: flewelling@flewellingmoody.com

ANTELOPE VALLEY OFFICE:
3333 Walnut Street, Suite 200
Antelope, CA 95709
Phone: 916.841.3434
Fax: 916.841.3434
Email: chris@flewellingmoody.com

An Employee Owned Corporation



ARCHITECT:
JIMPE ARCHITECTS, INC.
10000 JIMPE DRIVE
ANTHOPE, CA 95709
TEL: 916.841.3434
WWW.JIMPEARCHITECTS.COM

CONTRACT:
JIMPE ARCHITECTS, INC.
10000 JIMPE DRIVE
ANTHOPE, CA 95709
TEL: 916.841.3434
WWW.JIMPEARCHITECTS.COM

IDENTIFICATION STAMP
DW OF THE STATE ARCHITECT
APPROX 11.9.17
JIMPE ARCHITECTS, INC.
DATE: MAR 13, 2010

Drawn by: AC
Checked by: PH

Revision	No.	Date	Description

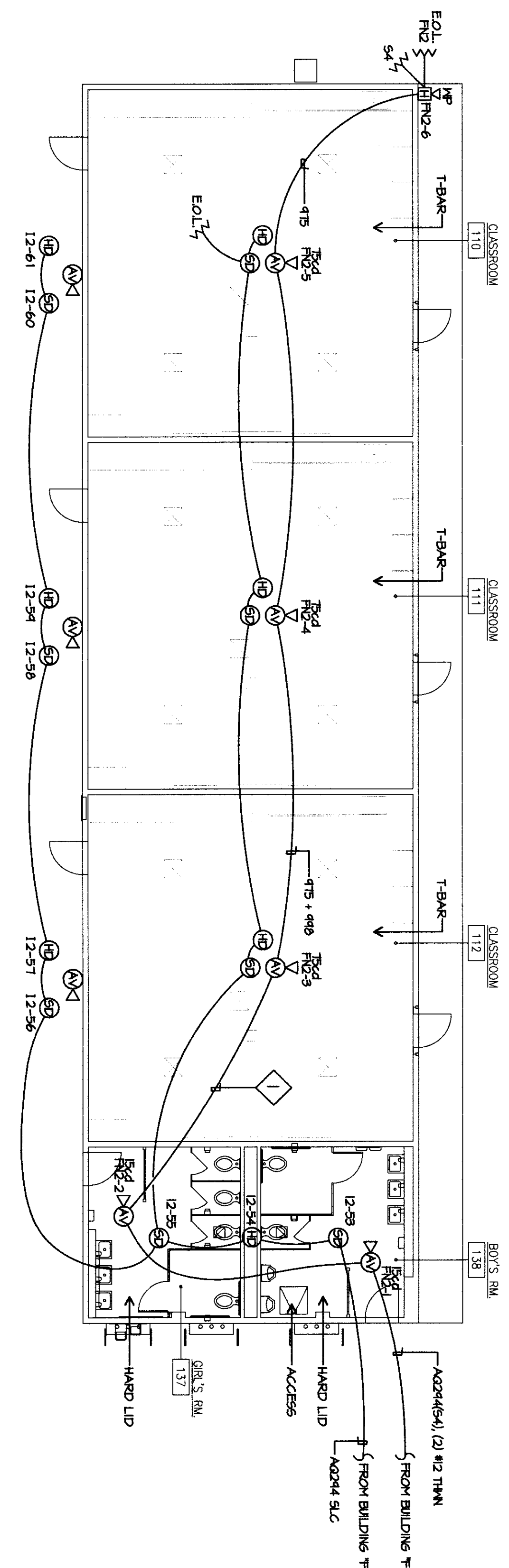
**MODERNIZATION PROJECT AT
EVERGREEN ELEMENTARY SCHOOL**
2800 ROSE WARE DRIVE
BIRMINGHAM, CA 93304

BAMBERFIELD CITY SCHOOL DISTRICT

**BUILDING E FIRE ALARM
PLAN**

Job No. **1894200**
Date: **1-14-2009**

E-7.3



BUILDING E FIRE ALARM PLAN

SCALE: 1/8"=1'-0"