

IDENTIFICATION STAMP  
OF THE STATE ARCHITECT  
APPROVED 11 28 17  
AC 11065-17-17  
DATE 11/28/17

Drawn by	AC
Checked by	PH
Author	Transmission
Revision	

As Authorized and by Order of the State Architect -  
The State Architect is not responsible for the accuracy of  
the information provided on this stamp. The information  
provided is for identification purposes only. The State  
Architect is not responsible for the accuracy of the  
information provided on this stamp. The information  
provided is for identification purposes only.

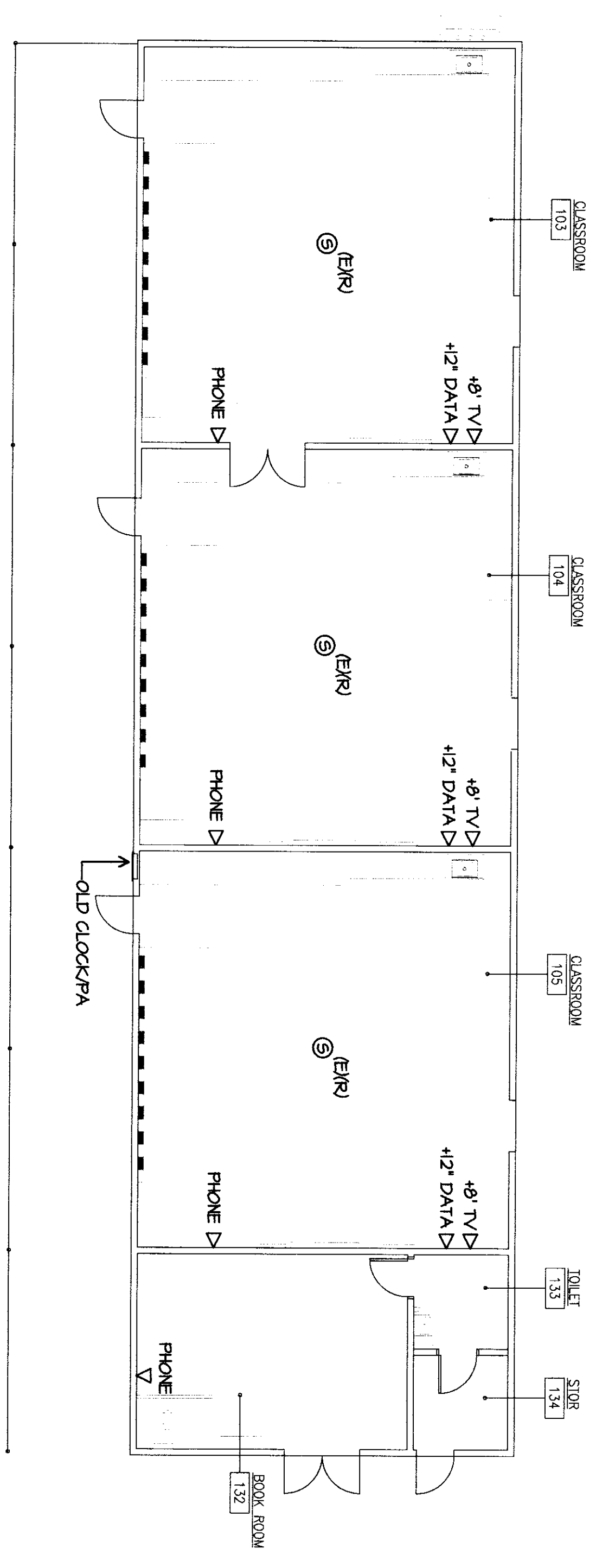
**MODERNIZATION PROJECT AT  
EVERGREEN ELEMENTARY SCHOOL**  
2600 ROSE LAURE DRIVE  
Bakersfield, CA 93304

**BAKERSFIELD CITY SCHOOL DISTRICT**

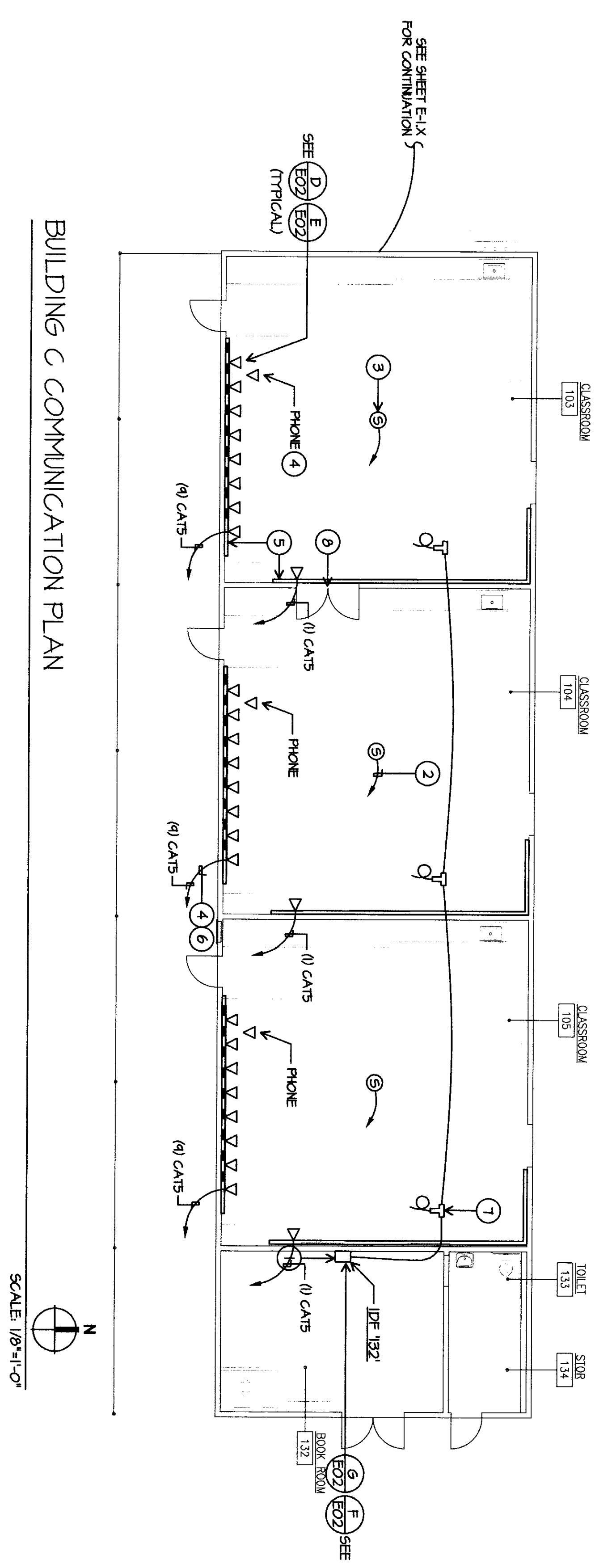
**BUILDING C COMMUNICATION  
DEMOLITION PLAN  
BUILDING C COMMUNICATION  
PLAN**

Doc No. **894200**  
Date **1-14-2009**  
**E-5.2**

- COMMUNICATION DEMOLITION PLAN NOTES**
- 1 REFER TO MECHANICAL PLANS FOR COORDINATION, TYPICAL.
  - 2 REMOVE WHEREMOLD COMPLETE, TYPICAL. REMOVE TV, DATA AND TELEPHONE DIMS. REMOVE ALL CABLE COMPLETE, TYPICAL.
  - 3 REMOVE SPEAKERS AND ALL SPEAKER CABLE COMPLETE, TYPICAL.



**BUILDING C COMMUNICATION DEMOLITION PLAN**  
SCALE: 1/8"=1'-0"



**BUILDING C COMMUNICATION PLAN**  
SCALE: 1/8"=1'-0"

- COMMUNICATION PLAN NOTES**
- 1 CONTRACTOR SHALL PROVIDE NEW IDF ENCLOSURE, INSTALL AND CONNECT NEW COMPONENTS MATCH EXISTING TYPICAL. DATA RACK ENCLOSURE SHALL BE 216 TYPICAL BLOCKS ON PAINTED METAL RACKS. PROVIDE 12" DIA. CABLE TRAYS FOR PA AND TELEPHONE TERMINATIONS.
  - 2 SUPPORT THE REMOVE AND/OR DATA AND OVERHEAD CABLES USING W/YELLOW HOOPS AT LEAST 6" ABOVE CEILING. TYPICAL COMMUNICATION CABLE SUPPORT, TYPICAL.
  - 3 PROVIDE ALL AS MODEL #8022W 2W/70W OR EQUIV. CEILING MOUNTED SPEAKER. PROVIDE A DEDICATED CAT5 CABLE RACK NEAREST IDF. TERMINATE ON OR ABOVE THE RACK. PROVIDE SERVICE LOOPS OF CABLE IN EACH SPEAKER LOCATION.
  - 4 PROVIDE CERTIFIED FASTTUCH MODEL #2888S VOEGEIT COLOR SANDSTONE) WITH CAT5E PATCH PANELS AT EACH IDF. PROVIDE DEDICATED CAT5 CABLE (CONSERVE CABLE) TO EACH PATCH PANEL. PROVIDE PATCH CABLE LENGTH IN IDF ENCLOSURE.
  - 5 SPEAKER MOUNT WHEREMOLD BRAND. TWO COMPARTMENT SPEAKERS (KAYWAY WITH SPLIT COVER). TYPICAL. CONTRACTOR SHALL REMOVE ALL DIMMS, FITTINGS, FACEPLATES AND DEVICES FOR A COMPLETE SYSTEM, TYPICAL. COORDINATE EXACT LOCATION WITH ROBERT VAN TASSEL, SUPERVISOR, 5884 MOUNTAIN VIEW AVE. #E.F.F.
  - 6 PROVIDE 8/ CAT5 CABLES BACK TO CLOSET IDF AND TERMINATE ON PATCH PANELS, TYPICAL.
  - 7 PROVIDE BALUNDR TONGUE-T-FANS WITH QUADSHIELD COMPRESSION CHANNELS. TYPICAL. CABLE CONDUITS TO ADJACENT ROOMS. PROVIDE 15' OF EXTRA CABLE PER CLASSROOM (SMART BOARD SIDE OF ROOM, CALIBRATE ATTACHED TO SMART BOARD). PROVIDE RESULTS TO GARY TAYLOR, BAKERSFIELD CITY SCHOOL DISTRICT, 5845 19TH ST. #E.F.F.
  - 8 ROUTE WHEREMOLD OVER DOOR.

SEE SHEET E-5 FOR CONTINUATION

SEE E-5 FOR CONTINUATION