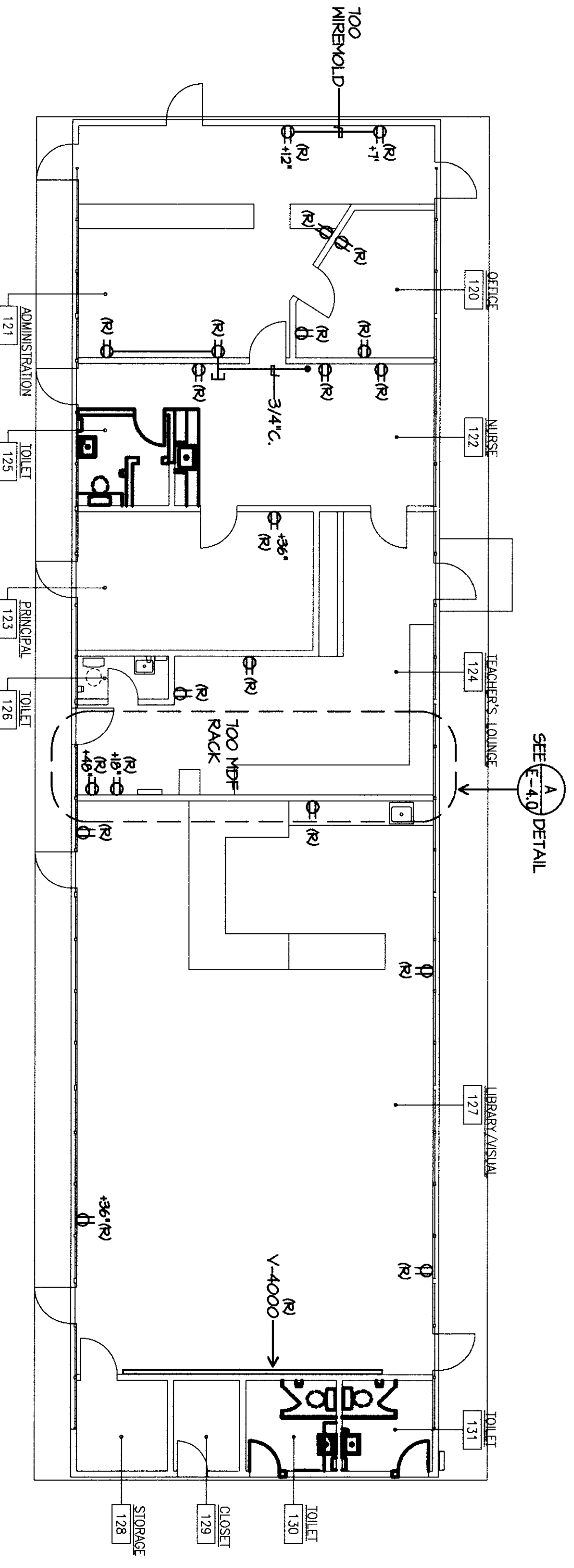


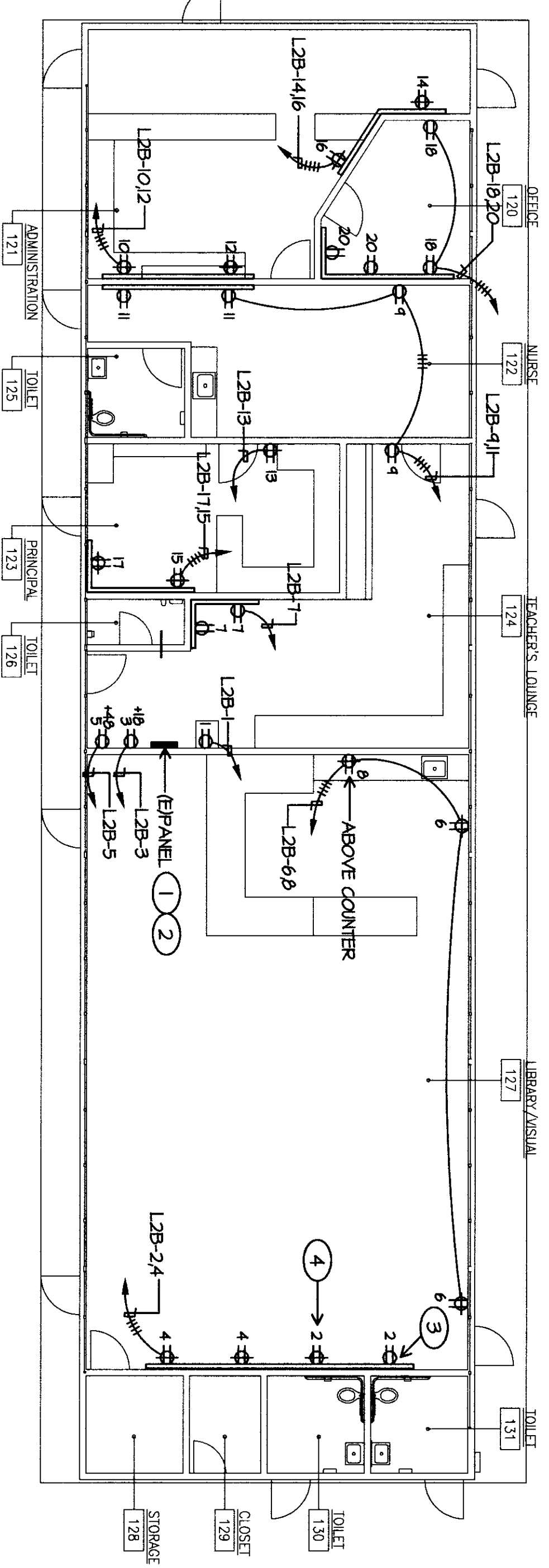
EAST WALL "TEACHERS WORK ROOM"

SCALE NONE (A)



BUILDING B ELECTRICAL DEMOLITION PLAN

SCALE: 1/8"=1'-0"

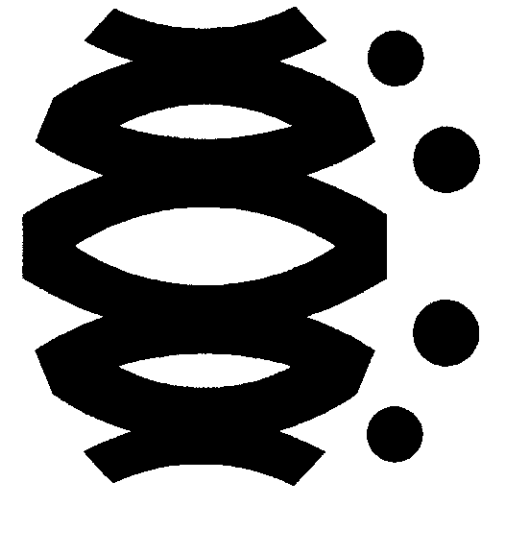


BUILDING B ELECTRICAL PLAN

SCALE: 1/8"=1'-0"

- ELECTRICAL DEMOLITION PLAN NOTES**
- 1 CONTRACTOR SHALL REMOVE DEVICES, BOXES, FITTINGS, CONDUIT SURFACE RACEWAY AND CONDUCTORS ETC., BACK TO PANEL SERVING THEM. PROVIDE BLANKS FOR ALL UNUSED TERMINALS. COORDINATE WITH ARCHITECT FOR REMOVAL OF PANELS. COORDINATE WITH ARCHITECT FOR REMOVAL OF CONDUIT. BAKERSFIELD CITY SCHOOL DISTRICT 641-631-5885
 - 2 WHERE REMOVED DEVICES, ETC. SERVE DOWNSTREAM ONES TO REMAIN, RECONNECT THESE.

- ELECTRICAL PLAN NOTES**
- 1 EXISTING PANEL TO REMAIN. REPAIR PANEL, 120" PROVIDE NEW TYPEWRITTEN PANEL SCHEDULE.
 - 2 PROVIDE GROUND BUS FOR PANEL, 120"
 - 3 REFER TO IS TO BE REND WITH WIREHOLD. ALL BRANCH CIRCUITS SHALL INCLUDE W/ GROUND CONDUCTOR.
 - 4 ALL RECEPTACLES SHALL BE 15' A.F.T. MINIMUM.

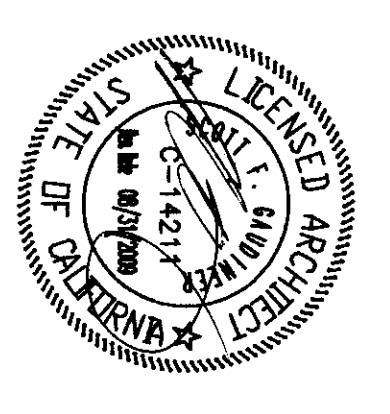


FLEWELLING & MOODY
architects for education

HEADQUARTERS OFFICE:
411 South Lake Avenue, Suite 500
Bakersfield, CA 93307
Phone: 805.833.4477
Email: flewelling@flewellingmoody.com

ANTELOPE VALLEY OFFICE:
1033 West Central Boulevard
Bakersfield, CA 93304
Phone: 805.846.0771
Email: bakersfield@flewellingmoody.com

An Employee-Owned Corporation



CONSULTANT:
JIMPE ARCHITECTS, INC.
1128 S. G STREET
BAKERSFIELD, CA 93304
PHONE: 805.833.4477
FAX: 805.833.4478
WWW.JIMPEARCHITECTS.COM

IDENTIFICATION STAMP:
D.M. OF THE STATE ARCHITECT
APPROX 1128117
AC 1128117
DATE: MAR 18 2010

MODERNIZATION PROJECT AT EVERGREEN ELEMENTARY SCHOOL
2600 ROSE WARE DRIVE
BAKERSFIELD, CA 93304

BAKERSFIELD CITY SCHOOL DISTRICT

BUILDING B ELECTRICAL DEMOLITION PLAN
BUILDING B ELECTRICAL PLAN

Job No. **1994200**
Date: **1-14-2009**

E-4.0