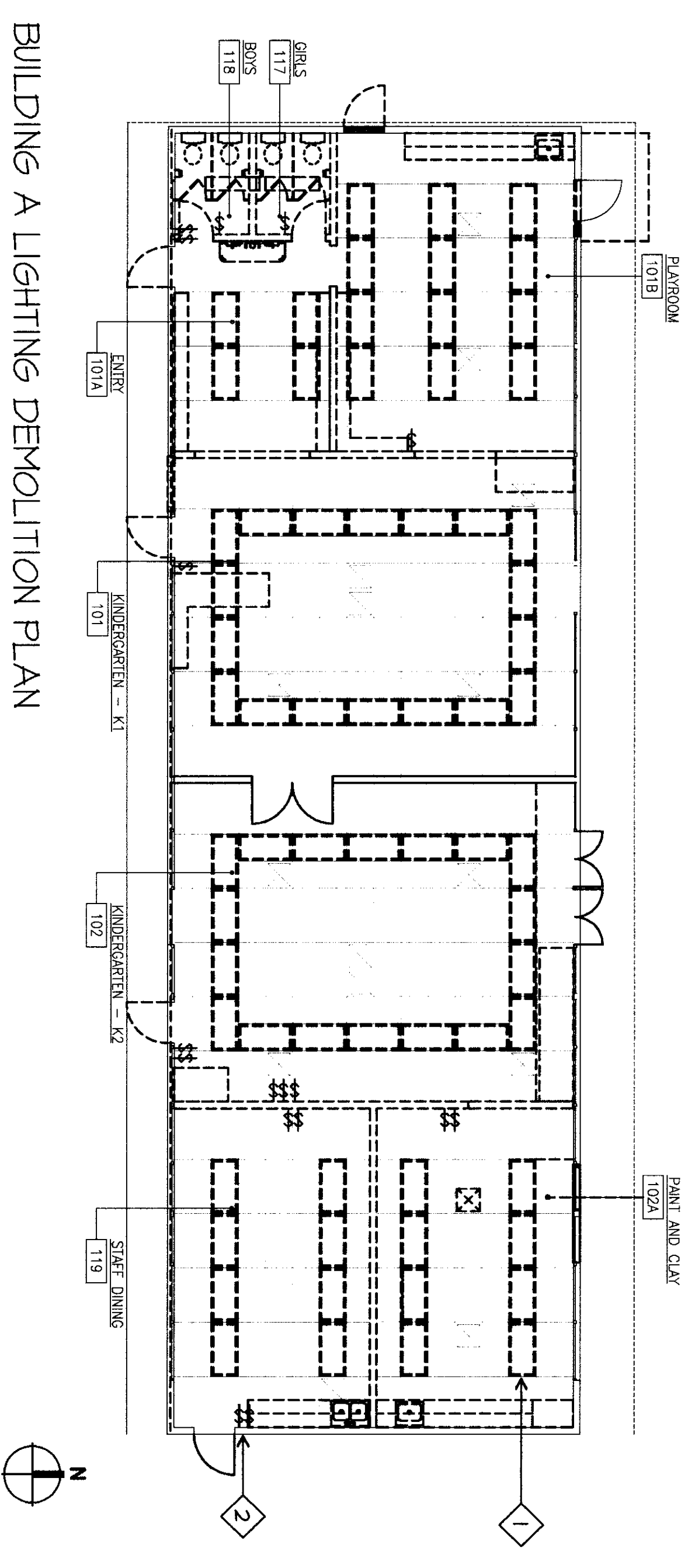
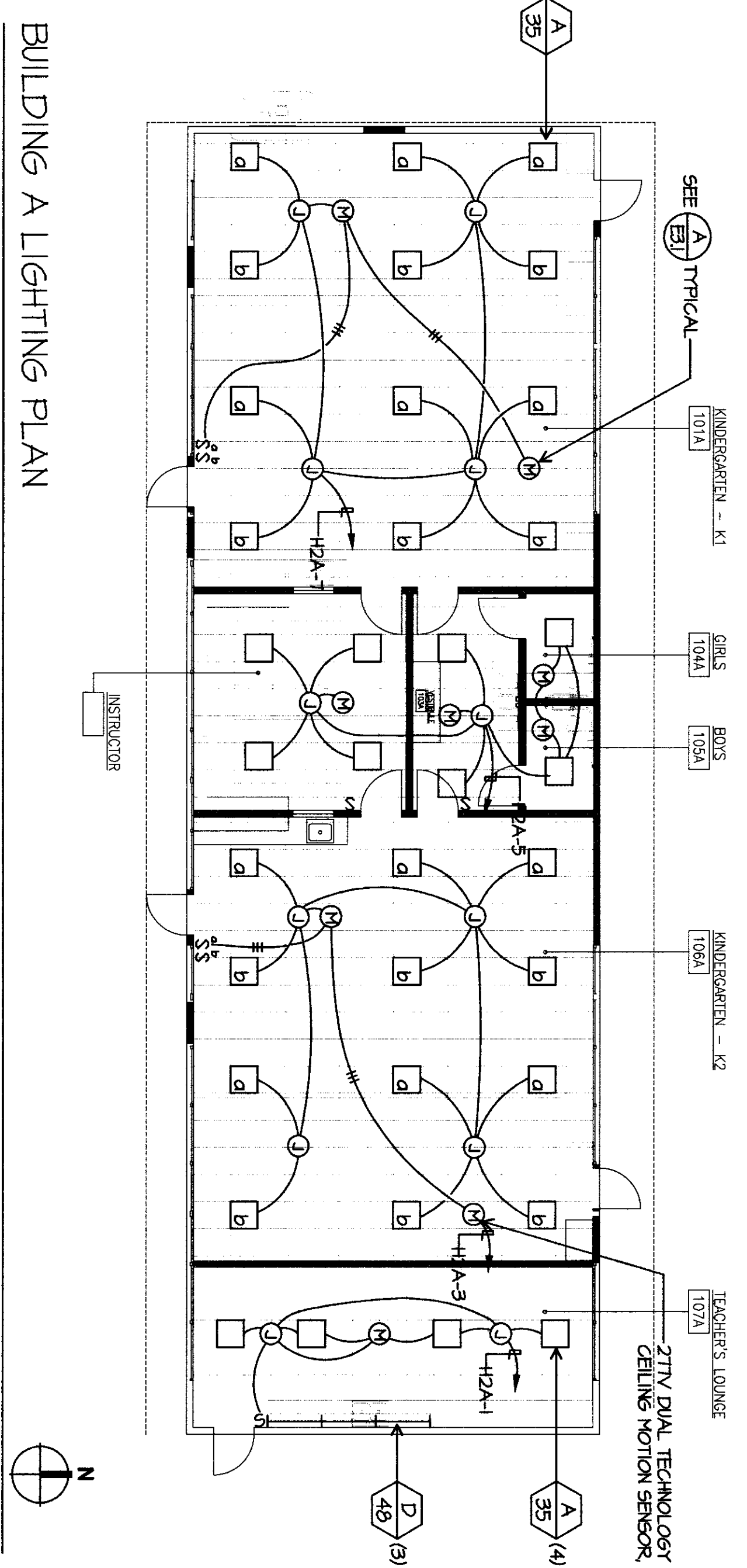


C:\Documents and Settings\jmoran\Desktop\PROJECTS\08249\08249 E-3.1.dwg  
Last Saved By: jmoran - Feb 04, 2010 - 3:55pm  
Last Printed By: ALDRIDGE - Feb 04, 2010 - 3:55pm



- LIGHTING DEMOLITION PLAN NOTES**
- 1 REMOVE AND DISPOSE OF EXISTING LIGHT FIXTURES COMPLETE. DEMOLISH EXISTING CONDUIT, CONDUIT & CONDUCTORS BACK TO SERVING PANEL.
  - 2 REMOVE AND DISPOSE OF ALL SWITCHES IN BUILDING TYPICAL.



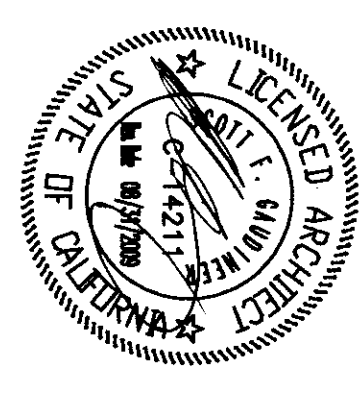
**FLEWELLING & MOODY**  
architects education

**HEADQUARTERS OFFICE:**  
141 South Lake Avenue, Suite 100  
Redwood City, CA 94061  
Phone: 650.961.2200  
Fax: 650.961.2201  
Email: flewelling@flemingmoody.com

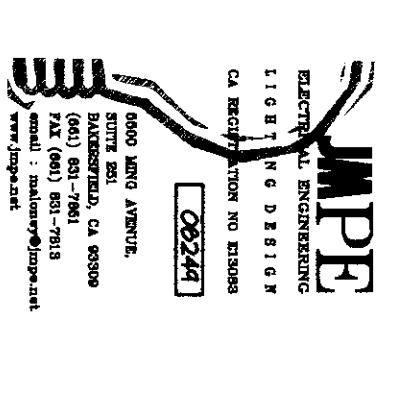
**ANIELOPE VALLEY OFFICE:**  
1025 Third Street, Suite 100  
Oakland, CA 94612  
Phone: 510.437.7777 Fax: 510.437.3343  
Email: flewelling@flemingmoody.com

An Employee Owned Corporation

**ARCHITECT**



**CONSULTANT**



**REGISTERATION STAMP**  
DIV. OF THE STATE ARCHITECT  
APPROVED 112817  
AC, LEWELLING, FLEWELLING & MOODY  
DATE: FEB 18 2010

Drawn by: AC  
Checked by: PH

**PROJECT**

**MODERNIZATION PROJECT AT EVERGREEN ELEMENTARY SCHOOL**  
2800 ROSE WARE DRIVE  
BAKERSFIELD, CA 93304

**BAKERSFIELD CITY SCHOOL DISTRICT**

**BUILDING A LIGHTING DEMOLITION PLAN**  
**BUILDING A LIGHTING PLAN**

Job No. 1894200  
Date: 1-14-2009  
**E-3.1**