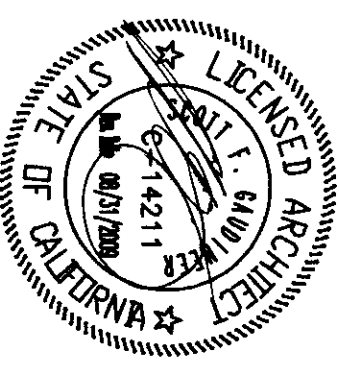


FLEWELLING & M O O D Y
architects education

HEADQUARTERS OFFICE:
41 South Lake Avenue, 2nd Floor
Pasadena, CA 91107
Tel: 626.799.1177
Fax: 626.799.1178
E-Mail: info@flemingmoody.com

ANTELOPE VALLEY OFFICE:
1535 West Locust Street
Antelope Valley, CA 91731
Tel: 916.833.3413
Fax: 916.833.3414
E-Mail: antelope@flemingmoody.com

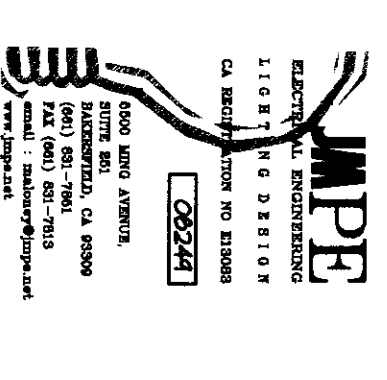
An Equal Opportunity Employer



ARCHITECT

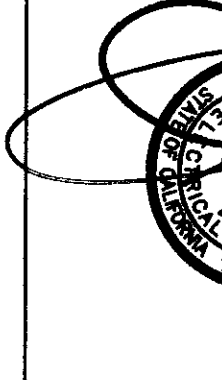
DATE: 11/18/2010

SCALE: 1/8"=1'-0"



CONSULTANT

DATE: 11/18/2010



REGISTRATION STAMP
BY THE STATE ARCHITECT
APPROX 11/28/17
AC L11185288 R2
DATE: 11/18/2010

AGENCY
BAKERSFIELD CITY SCHOOL DISTRICT

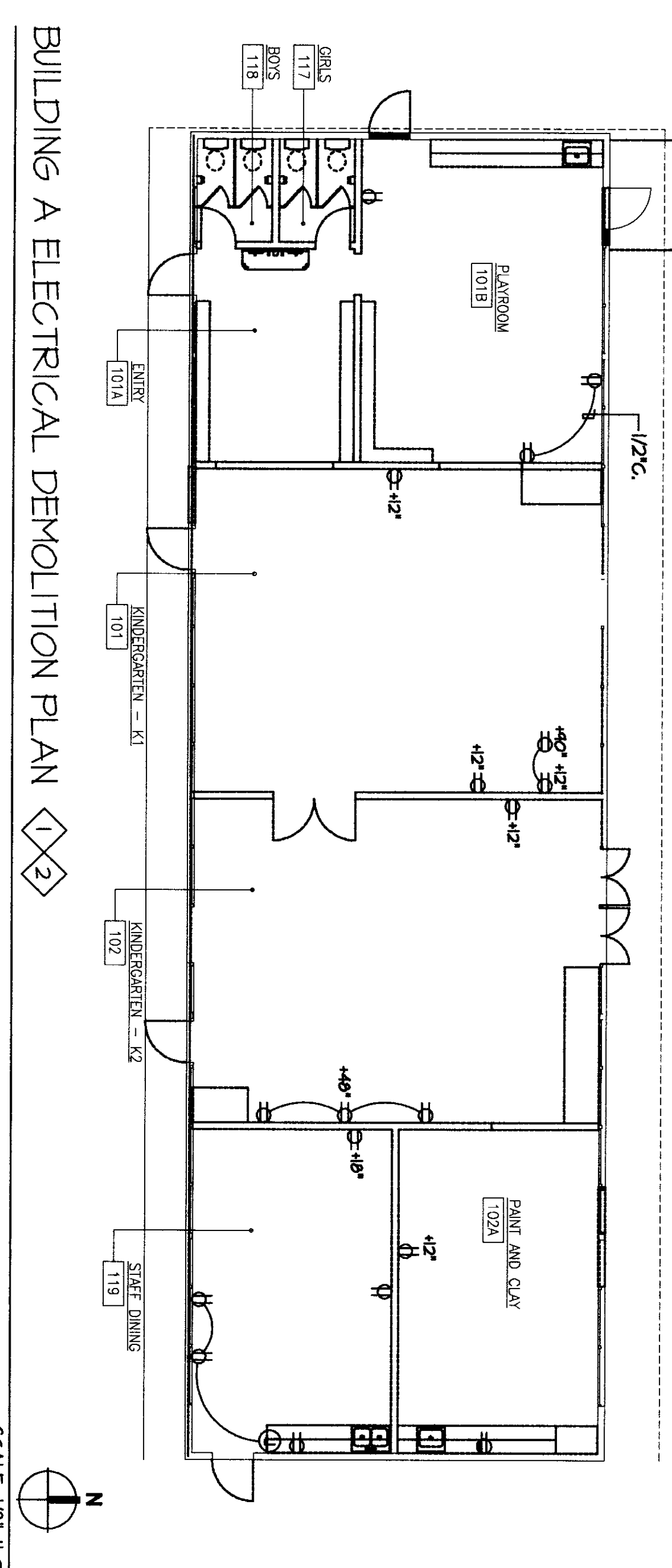
**MODERNIZATION PROJECT AT
EVERGREEN ELEMENTARY SCHOOL,
BAKERSFIELD, CA 93304**

BAKERSFIELD CITY SCHOOL DISTRICT

**BUILDING A ELECTRICAL
DEMOLITION PLAN
BUILDING A ELECTRICAL PLAN**

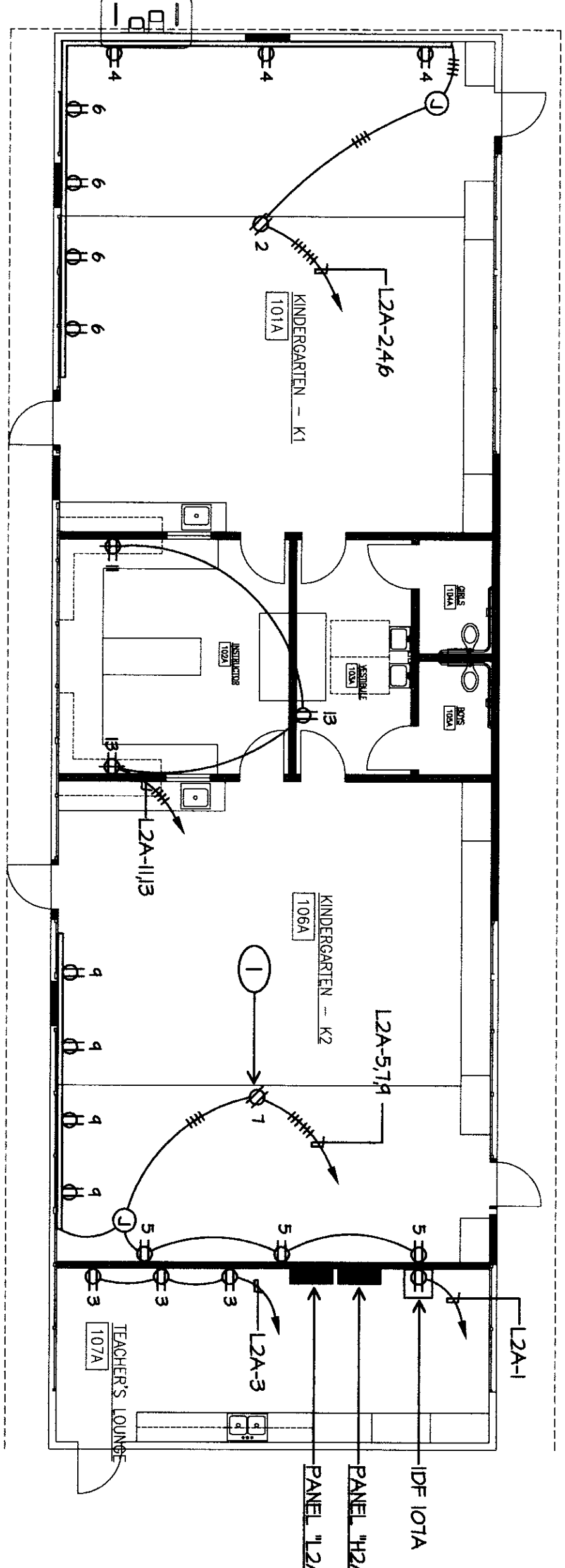
Job No. 1894200
E-3.10
Date: 1-14-2009

- ELECTRICAL DEMOLITION PLAN NOTES**
- 1 CONTRACTOR SHALL REMOVE DEVICES, BOXES, FITTINGS, CONDUIT, SURFACE RACEWAY AND CONDUCTORS ETC. BACK TO PANEL SERVING THEM. PROVIDE BLANKS FOR ALL UNUSED PANELS. PROVIDE BLANKS FOR ALL UNUSED PANELS WITH ROBERT VAN TASSEL SUPERVISOR SIGNATURE AND CONSTRUCTION, BAKERSFIELD CITY SCHOOL DISTRICT 661-631-5885.
 - 2 WHERE REMOVED DEVICES, ETC. SERVE DOWNSTREAM ONES TO REMAIN, RE-CONNECT THESE.



BUILDING A ELECTRICAL DEMOLITION PLAN 1/3
SCALE: 1/8"=1'-0"

- ELECTRICAL PLAN NOTES**
- 1 QUANTITY OF DEVICES, BOXES, FITTINGS, CONDUIT, SURFACE RACEWAY AND CONDUCTORS ETC. TO BE REMOVED IS SHOWN.



BUILDING A ELECTRICAL PLAN
SCALE: 1/8"=1'-0"