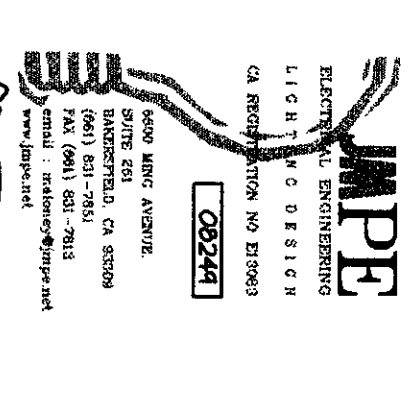
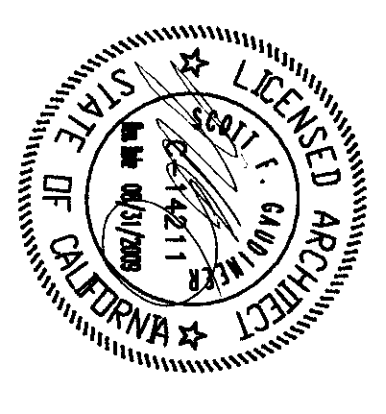


FLEWELLING & WOODY
architects for education

HEADQUARTERS OFFICE:
941 South Lake Avenue, Suite 100
Pasadena, California 91107
Phone: 626.799.1111
Email: info@flewellingandwoody.com

ANTELOPE VALLEY OFFICE:
1005 West Lancaster Boulevard
Lancaster, California 93534
Phone: 805.251.1111
Email: antelope@flewellingandwoody.com

An Employee Owned Corporation



REGISTRATION NUMBER:
DW BREWER-SMITH
ARCH 1113817
AC/AL/ES/PA/SS/CS
DATE: MAR 13 2010

Drawn by: AC
Checked by: PH

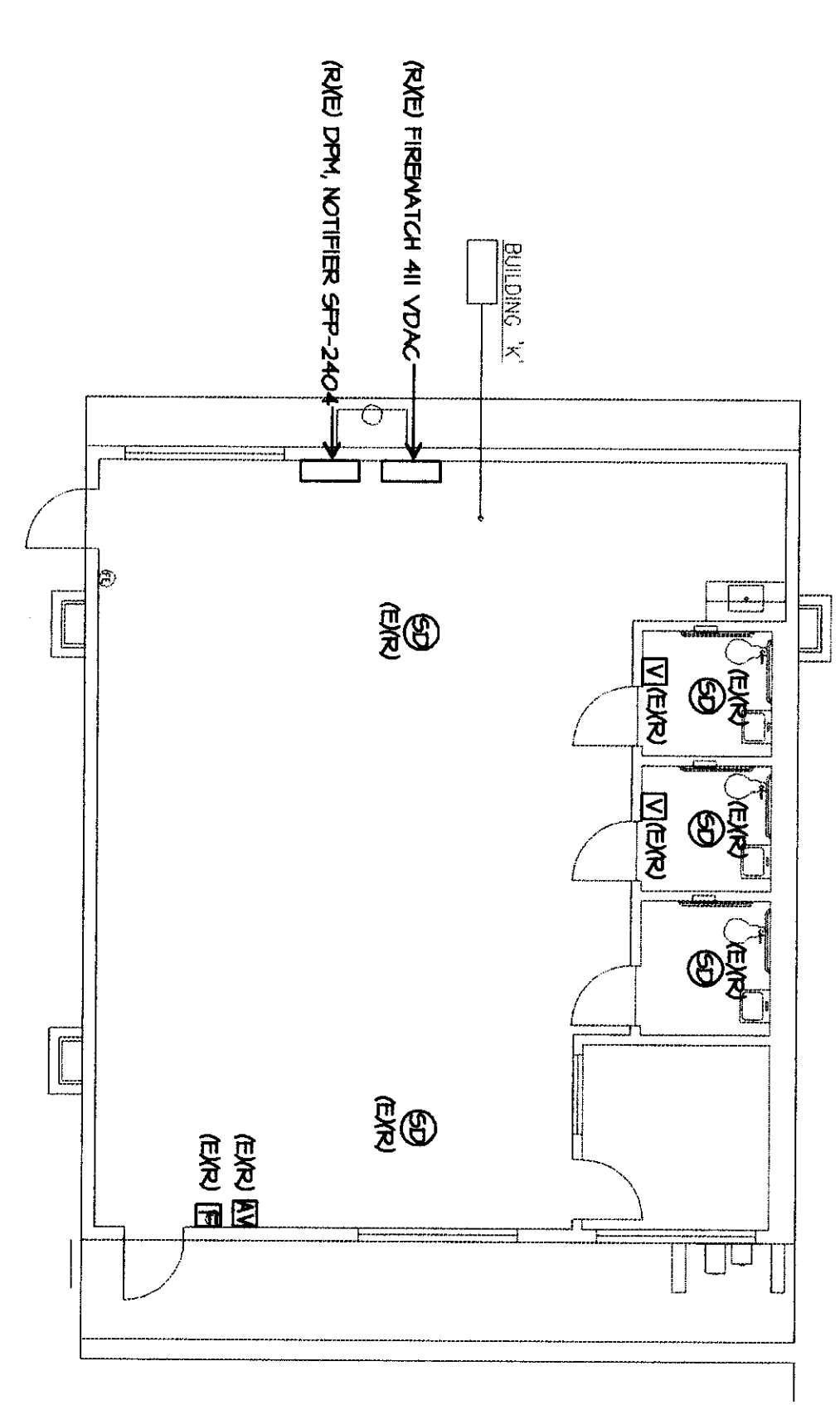
No.	Date	Description

MODERNIZATION PROJECT AT
EVERGREEN ELEMENTARY SCHOOL
2400 ROSE MARIE DRIVE
BAKERSFIELD, CA 93304

BAKERSFIELD CITY SCHOOL DISTRICT

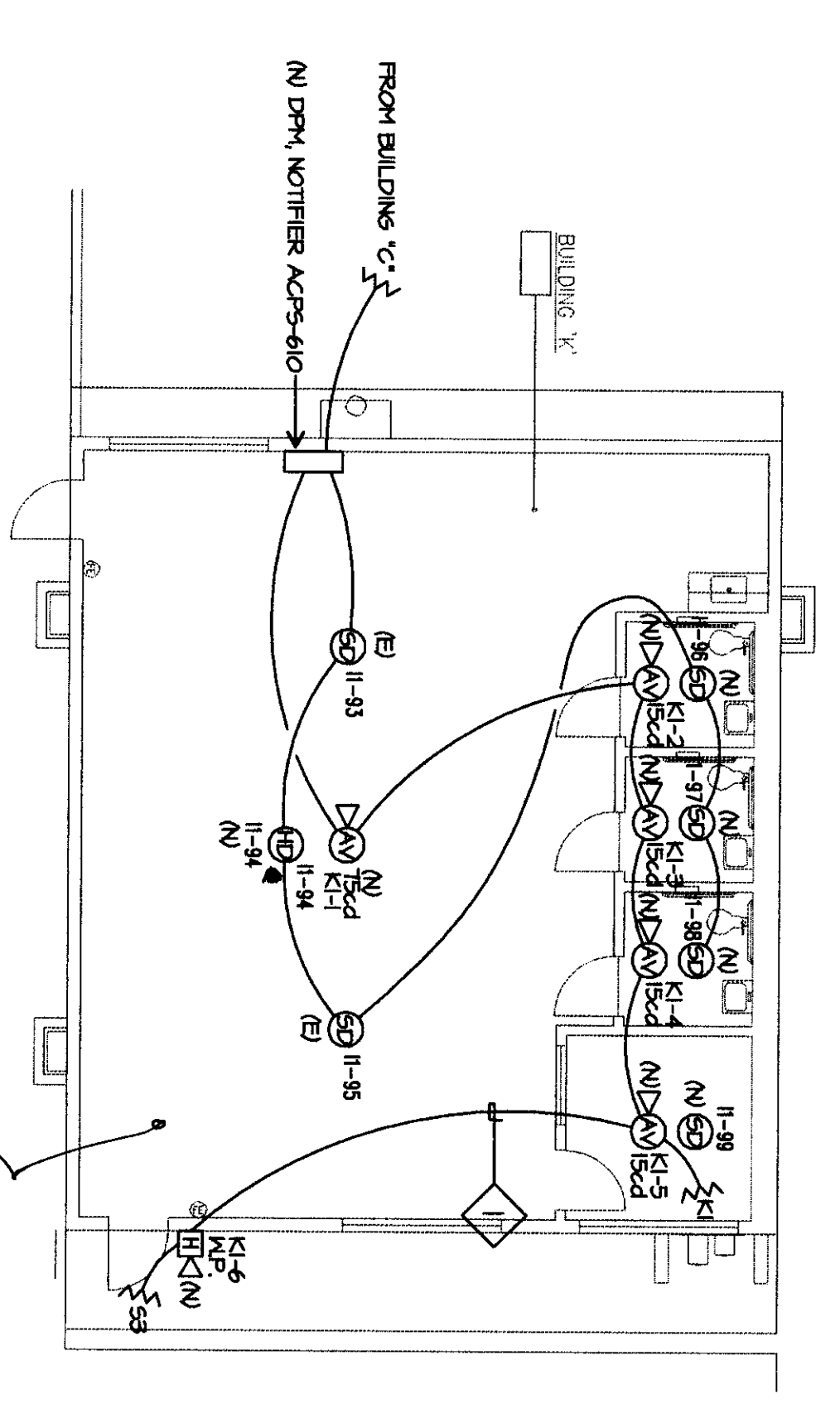
BUILDING K FIRE ALARM
DEMOLITION PLAN
BUILDING K FIRE ALARM
PLAN

JOB No.
1894300
Date
1-14-2009
E-103



BUILDING K FIRE ALARM DEMOLITION PLAN

SCALE: 1/8"=1'-0"



BUILDING K FIRE ALARM PLAN

SCALE: 1/8"=1'-0"

FIRE ALARM PLAN NOTES

- 1. SUPPORT THE ALARM CABLES EVERY 5'-0" / RIBD HOOKS AT LEAST 8' ABOVE CEILING. TYPICAL. FIRE ALARM CABLES AND THEIR SUPPORTS SHALL BE INDEPENDENT FROM COMMUNICATION CABLE SUPPORT. TYPICAL.