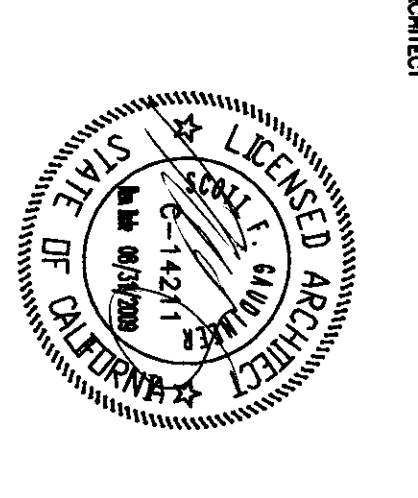


FLEWELLING & MOODY
architects & education

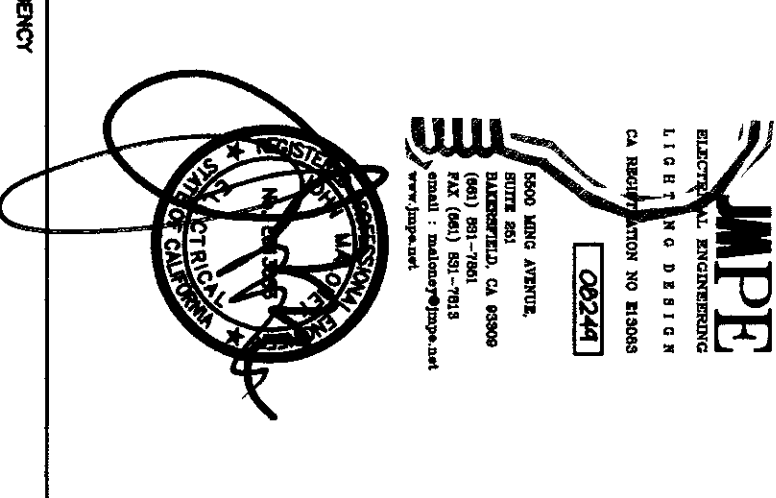
HEADQUARTERS OFFICE:
141 South Main Street
Bakersfield, CA 93304
805.833.7447
E-Mail: headquarters@flemoody.com

ANTIOPE VALLEY OFFICE:
1033 Main Street
Bakersfield, CA 93304
805.833.7447
E-Mail: antiopevalley@flemoody.com

An OSHA Registered Design Firm



CONTRACTOR:
JMPE
1111 1/2 Street
Bakersfield, CA 93304
805.833.7447
E-Mail: info@jmpe.com



IDENTIFICATION NUMBER:
BY THE STATE ARCHITECT
APPROX 11 2 8 1 1
AC 11545555 (2)
DATE 11 2 2010

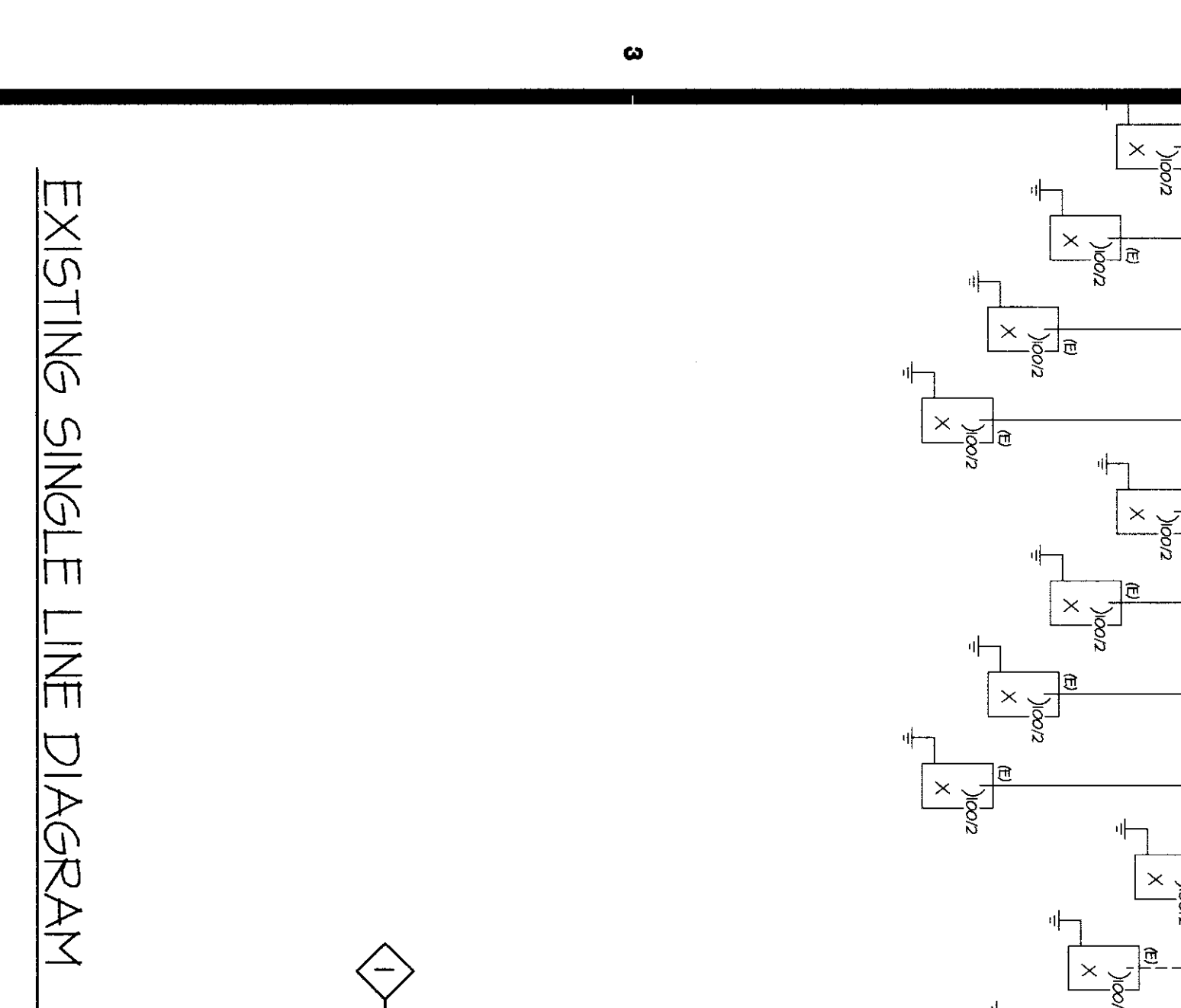
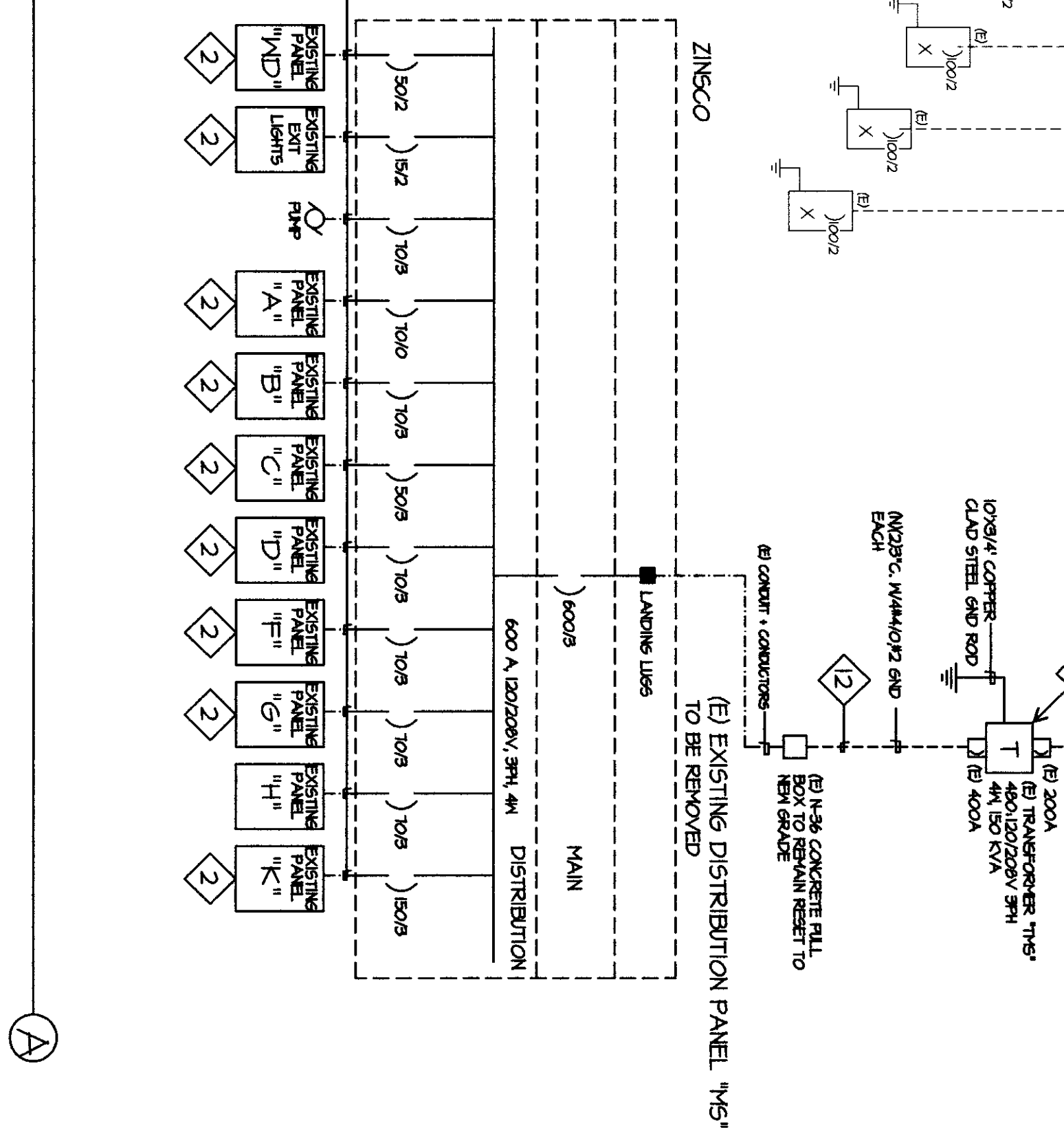
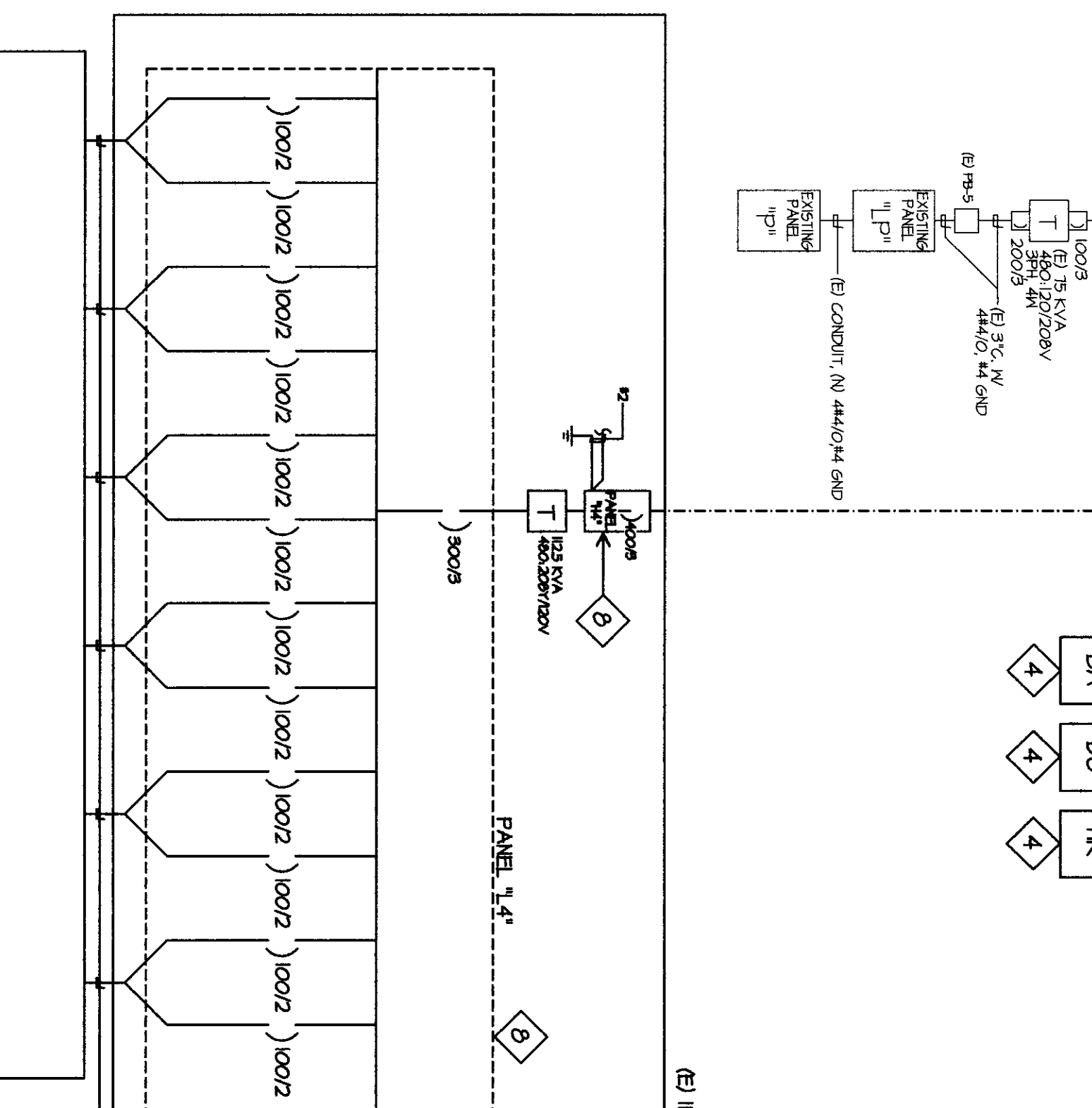
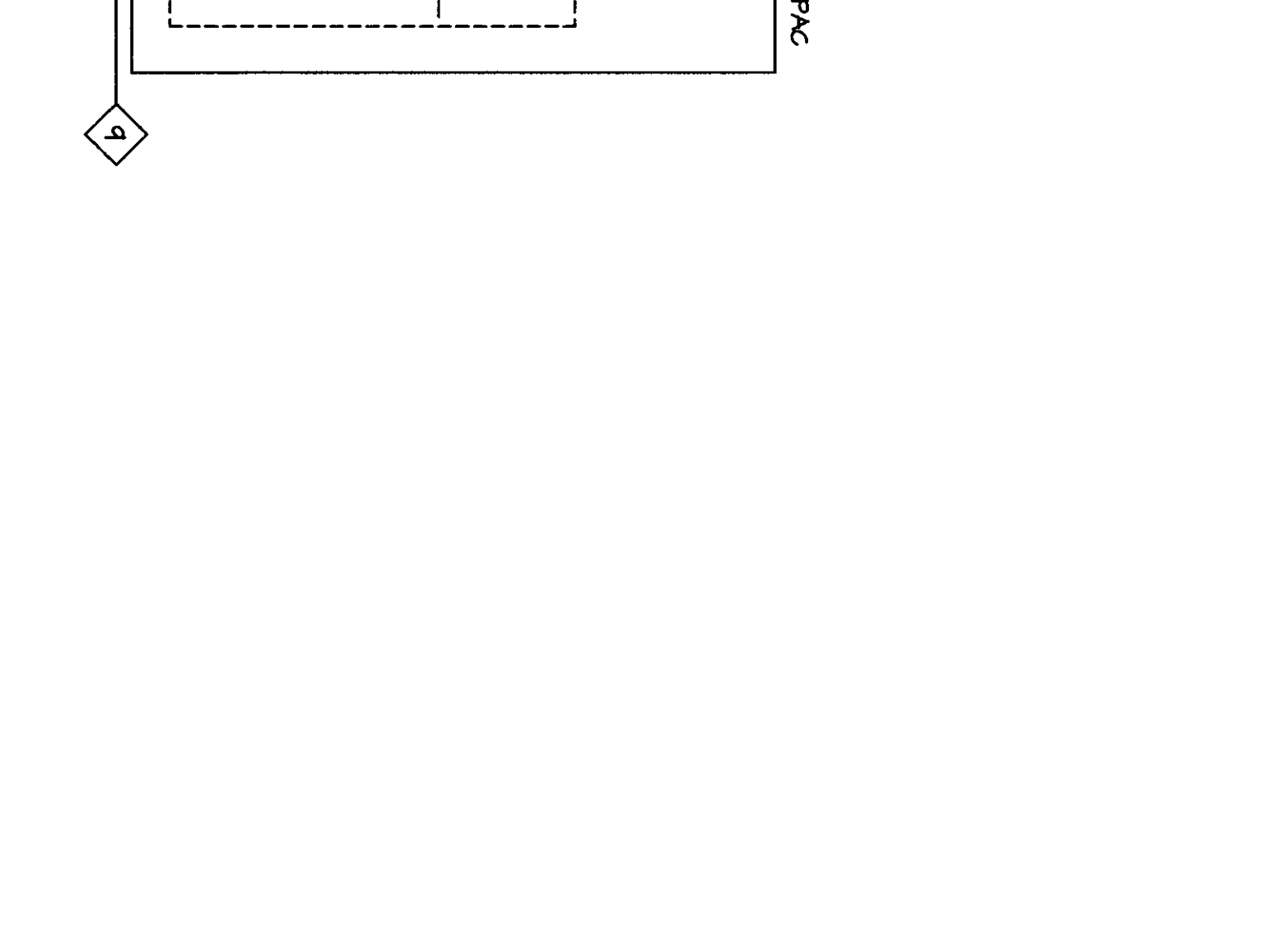
MODERNIZATION PROJECT AT EVERGREEN ELEMENTARY SCHOOL
2500 ROSE WARE DRIVE
BAKERSFIELD, CA 93304

BAKERSFIELD CITY SCHOOL DISTRICT

EXISTING SINGLE LINE DIAGRAM GENERAL NOTES CODE REQUIREMENTS SYMBOL LIST

Doc No: **9844000**
Date: **1-14-2009**
E-0

- EXISTING SINGLE LINE DIAGRAM NOTES**
- REMOVE FEEDER CONDUCTORS BETWEEN EXISTING COORDINATE SHUT DOWN WITH ROBERT VAN TASSEL CITY SCHOOL DISTRICT 661-631-5881. COORDINATE SALVAGE WITH ROBERT VAN TASSEL, TYPICAL.
 - REMOVE EXISTING PANEL, COMPLETE. REPAIR OPENING LEFT BY PANEL. REMOVE MATCH EXISTING COORDINATE SALVAGE WITH ROBERT VAN TASSEL, TYPICAL.
 - REMOVE FEEDER CONDUCTORS BETWEEN EXISTING MAIN SWITCHBOARD "MSB" AND PANEL, COMPLETE. COORDINATE AND CONSTRUCTION BAKERSFIELD CITY SCHOOL DISTRICT 661-631-5881. COORDINATE SALVAGE WITH ROBERT VAN TASSEL, TYPICAL.
 - REMOVE PANEL, COMPLETE. REMOVE CONDUIT TO 6" BELOW GRADE. CAP CONDUIT. REPAIR ASPHALT TO MATCH EXISTING.
 - REMOVE FEEDER CONDUCTORS BETWEEN EXISTING MAIN SWITCHBOARD AND PANEL, COMPLETE.
 - REMOVE FEEDER CONDUCTORS BETWEEN PORTABLE PANELS AND PANEL "14".
 - REMOVE FEEDER CONDUCTORS BETWEEN MAIN SWITCHBOARD "MSB" AND TRANSFORMER COMPLETE.
 - REMOVE TRANSFORMER COORDINATE SALVAGE WITH ROBERT VAN TASSEL.
 - REMOVE CONDUCTORS BETWEEN TRANSFORMER AND DISTRIBUTION PANEL "MS" COMPLETE.



EXISTING SINGLE LINE DIAGRAM

- GENERAL NOTES**
- VERIFY JOB SITE AND VERIFY EXISTING CONDITIONS PRIOR TO BID.
 - THE ELECTRICAL WORK SHALL BE INSTALLED IN ACCORDANCE WITH THE 2007 CALIFORNIA ELECTRICAL CODE, PART 1, TITLE 24, C.C.R. (2006 IBC), THE PLANS SHALL GOVERN.
 - CONDUIT RUNS AS SHOWN DIAGRAMMATICALLY. EXACT LOCATIONS SHALL BE DETERMINED IN THE FIELD TO SUIT FIELD CONDITIONS.
 - ALL ELECTRICAL REQUIREMENT ARRANGEMENTS AND LISTING REQUIREMENTS SHALL BE LISTED BY A RECOGNIZED LISTING AGENCY AND BEAR THAT LABEL OF APPROVAL.
 - CONTRACTOR SHALL FURNISH, INSTAL AND CONNECT ALL MATERIAL AND EQUIPMENT FOR THIS WORK UNLESS OTHERWISE NOTED.
 - FURNISH DISCONNECT SWITCHES AT REWIND MOTORS.
 - ALL SPACERS AS INDICATED ON PANELS FOR SWITCHBOARD SHALL BE COMPLETE WITH HARDWARE AND BUSHING FOR FUTURE BREAKER OR SWITCH.
 - CHECK ARCHITECTURAL PLANS FOR DOOR SWINGS BEFORE INSTALLING SWITCH OUTLETS.
 - GROUNDING AND BONDING SHALL BE PER CODE PLUS ANY ADDITIONAL PROVISIONS SPECIFIED OR SHOWN ON DRAWINGS.
 - ALL CONDUIT RUNS SHALL CONTAIN A CODE SIZED GROUND CONDUCTOR HAVING UNDERSIZING.
 - ALL CONDUCTORS SHALL BE IN CONDUIT.
 - ALL CONDUCTORS SHALL BE COVERED WITH TYPE THHN/THWN INSULATION.
 - 5/8" MINIMUM CLEARANCE OF ALL EQUIPMENT SHALL COMPARE TO ASCE 7-02 56.4.1.3.1 AND 56.4.1.3.6.1. ANCHORAGE DETAILS FOR ALL ROOF / FLOOR MOUNTED EQUIPMENT SHALL BE SHOWN ON PLANS.

- PERFORMANCE OF THE WORK OF THIS CONTRACT SHALL CONFORM TO THE REQUIREMENTS OF APPLICABLE GOVERNING CODES AND ORDINANCES INCLUDING THE FOLLOWING:**
- | | |
|----------|---|
| 2007 | BUILDING STANDARDS ADMINISTRATIVE CODE, PART 1, TITLE 24, C.C.R. |
| 2007 | CALIFORNIA BUILDING CODE, PART 2, TITLE 24, C.C.R. (2006 IBC, VOLUMES 1-3 WITH CALIFORNIA AMENDMENTS) |
| 2007 | CALIFORNIA ELECTRICAL CODE, PART 1, TITLE 24, C.C.R. (2006 N.E.C. WITH CALIFORNIA AMENDMENTS) |
| 2007 | CALIFORNIA MECHANICAL CODE, PART 4, TITLE 24, C.C.R. (2006 U.M.C. WITH CALIFORNIA AMENDMENTS) |
| 2007 | CALIFORNIA PLUMBING CODE, PART 5, TITLE 24, C.C.R. (2006 I.P.F.C. WITH CALIFORNIA AMENDMENTS) |
| 2007 | CALIFORNIA ENERGY CODE, PART 6, TITLE 24, C.C.R. |
| 2007 | CALIFORNIA FIRE CODE, PART 7, TITLE 24, C.C.R. WITH CALIFORNIA AMENDMENTS) |
| 2007 | CALIFORNIA REFERENCED STANDARDS, PART 12, TITLE 24, C.C.R. REGULATIONS. |
| NFPA 13 | AUTOMATIC SPRINKLER SYSTEM.....1999 EDITION |
| NFPA 14 | STANDPIPE SYSTEM.....2000 EDITION |
| NFPA 17A | WET CHEMICAL SYSTEM.....1994 EDITION |
| NFPA 21 | PRIVATE SERVICE MAINS.....1995 EDITION |
| NFPA 72 | NATIONAL FIRE ALARM CODE.....1999 EDITION (NOT THE STANDARDS 721 FOR VULNERABILITY) |