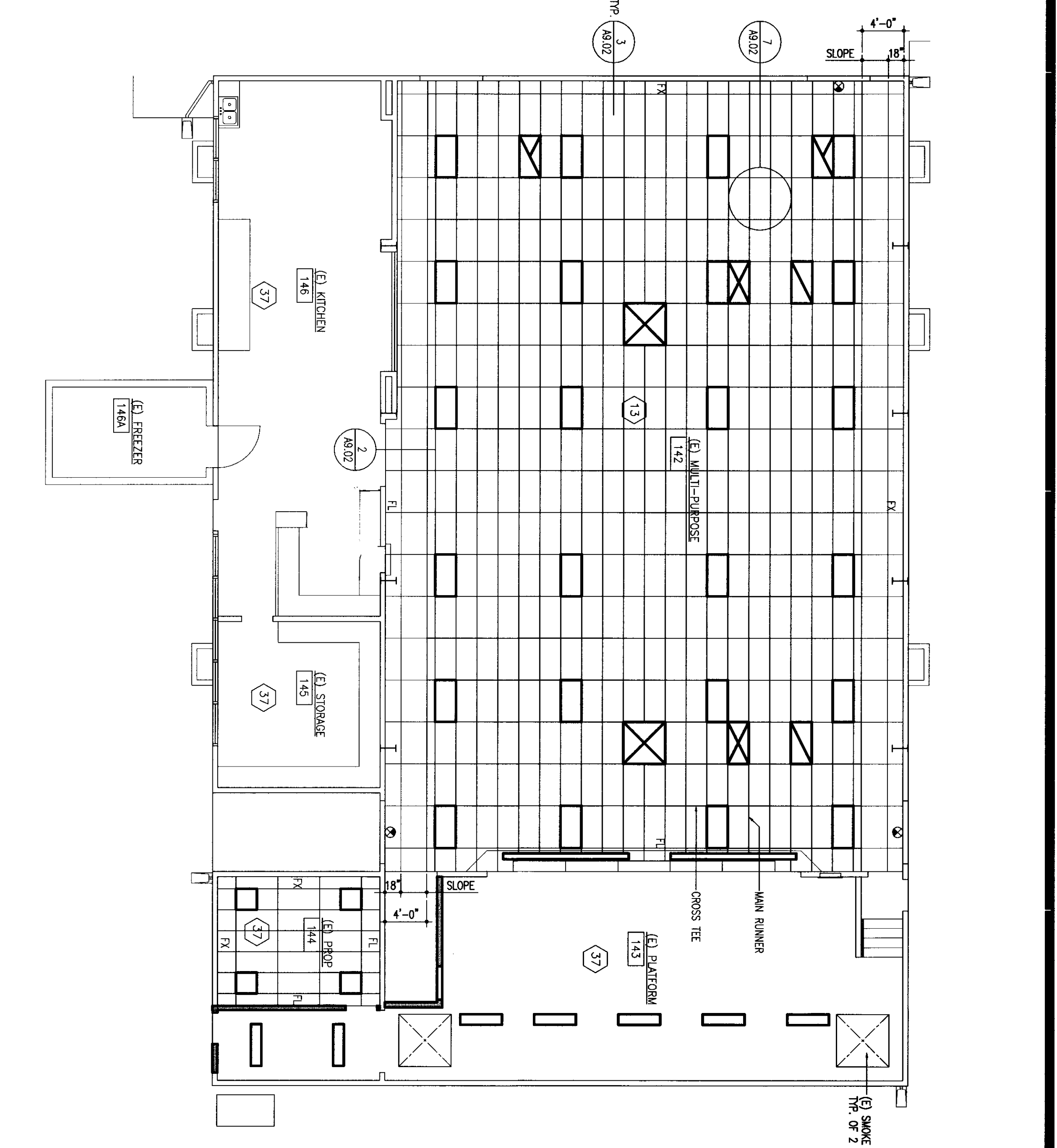
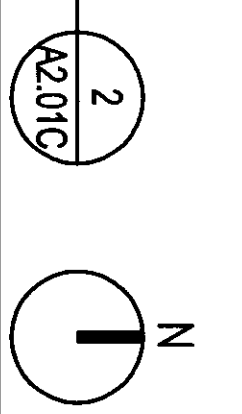
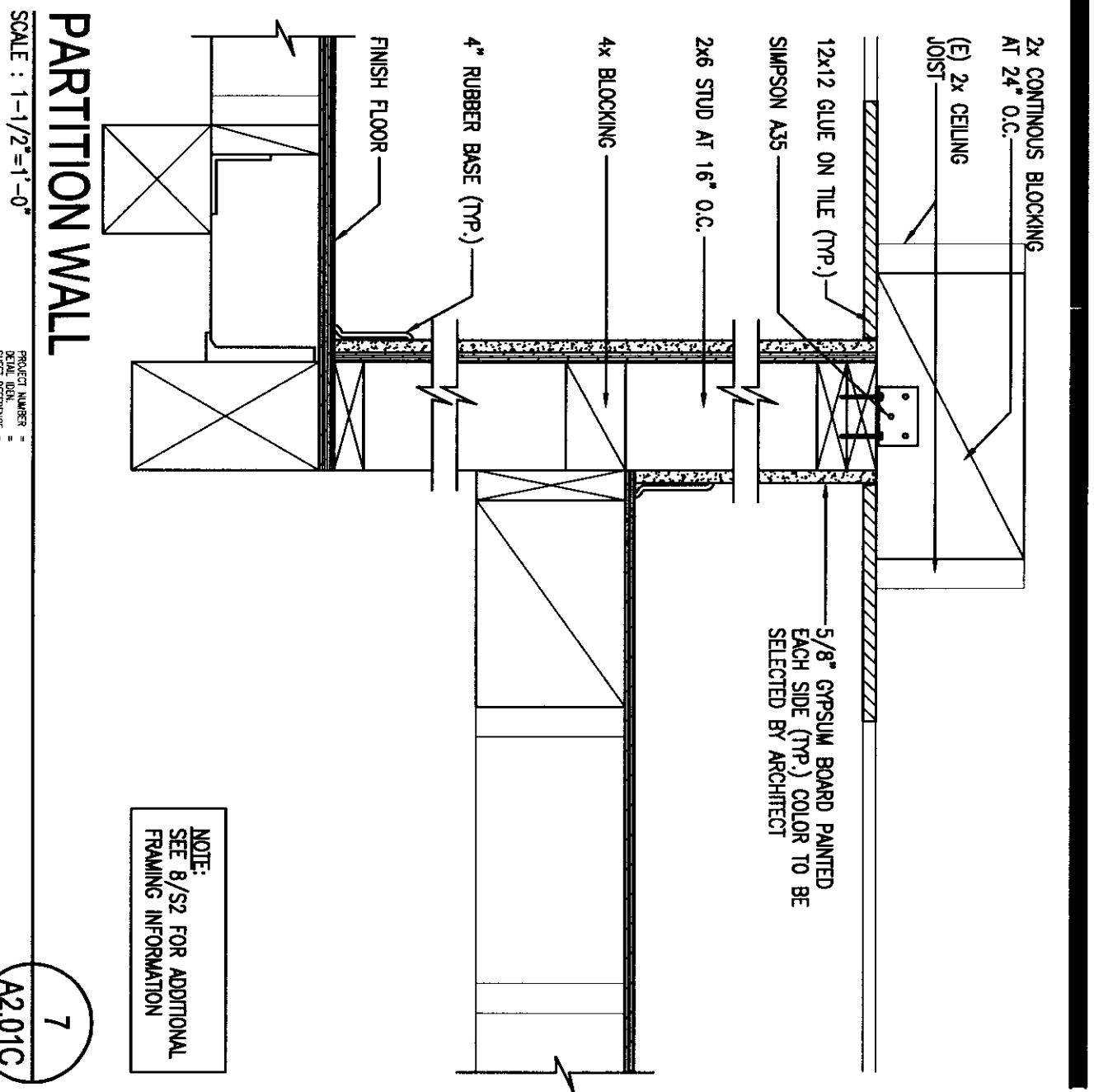
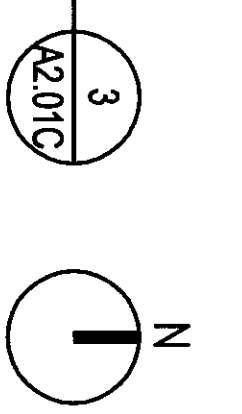


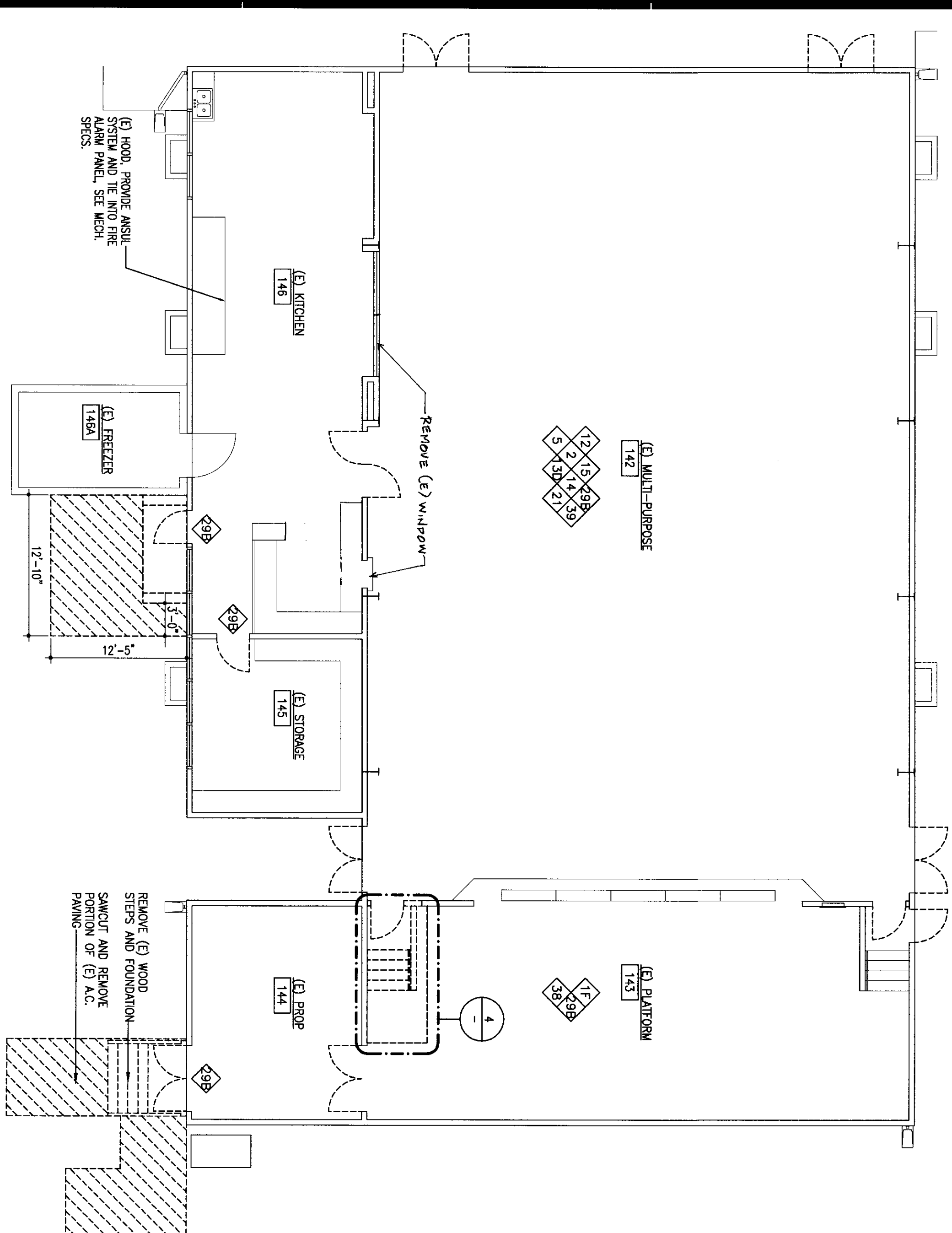
RECONSTRUCTION PLAN -
BUILDING "G" - MULTI-PURPOSE
SCALE: 1/8"=1'-0"
SHEET NO. 2



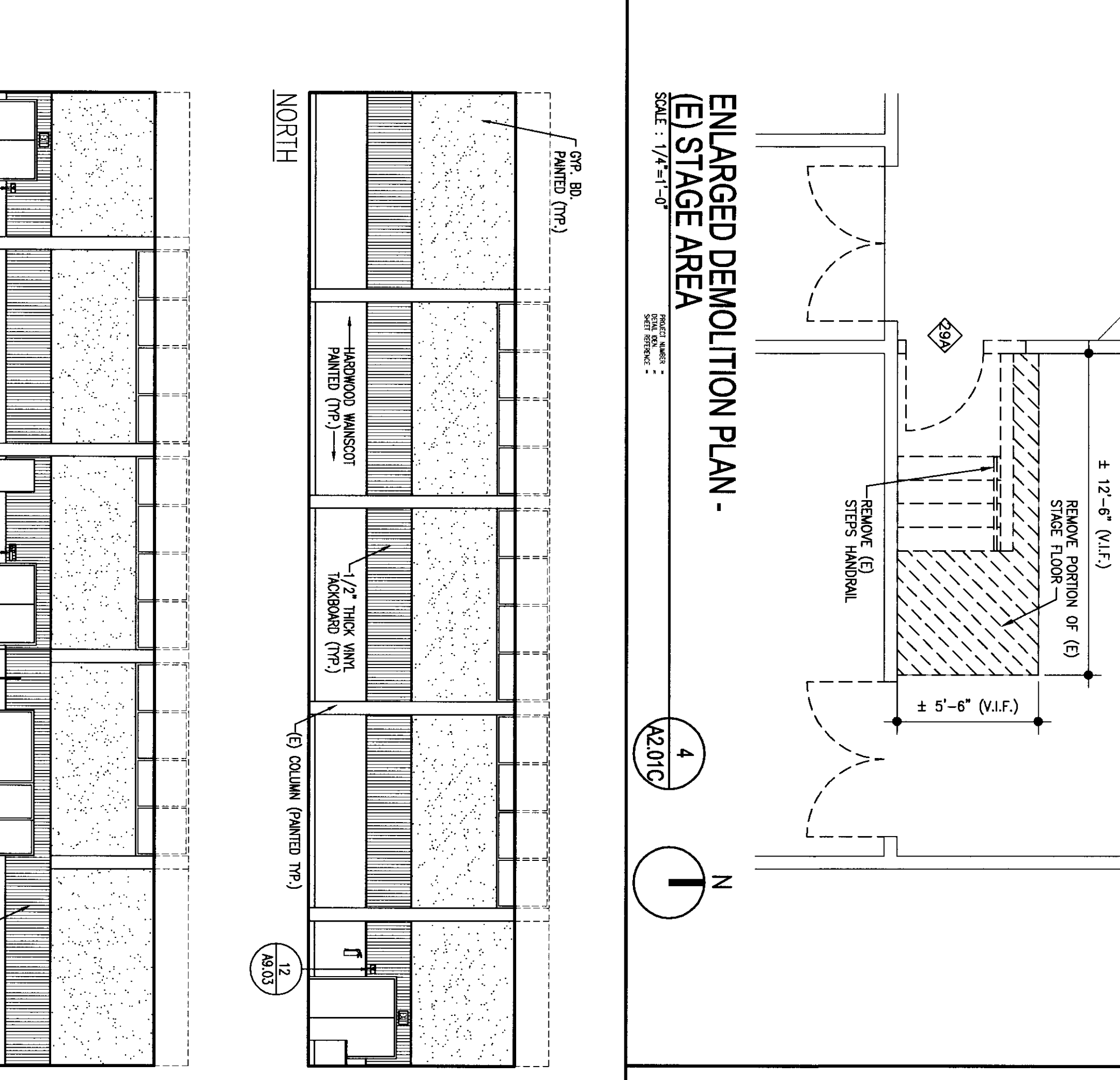
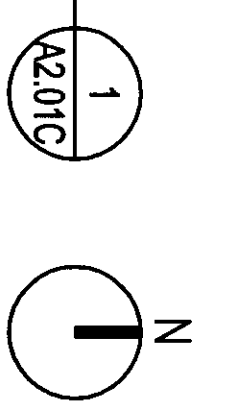
REFLECTED CEILING PLAN -
BUILDING "G" - MULTI-PURPOSE
SCALE: 1/8"=1'-0"
SHEET NO. 3



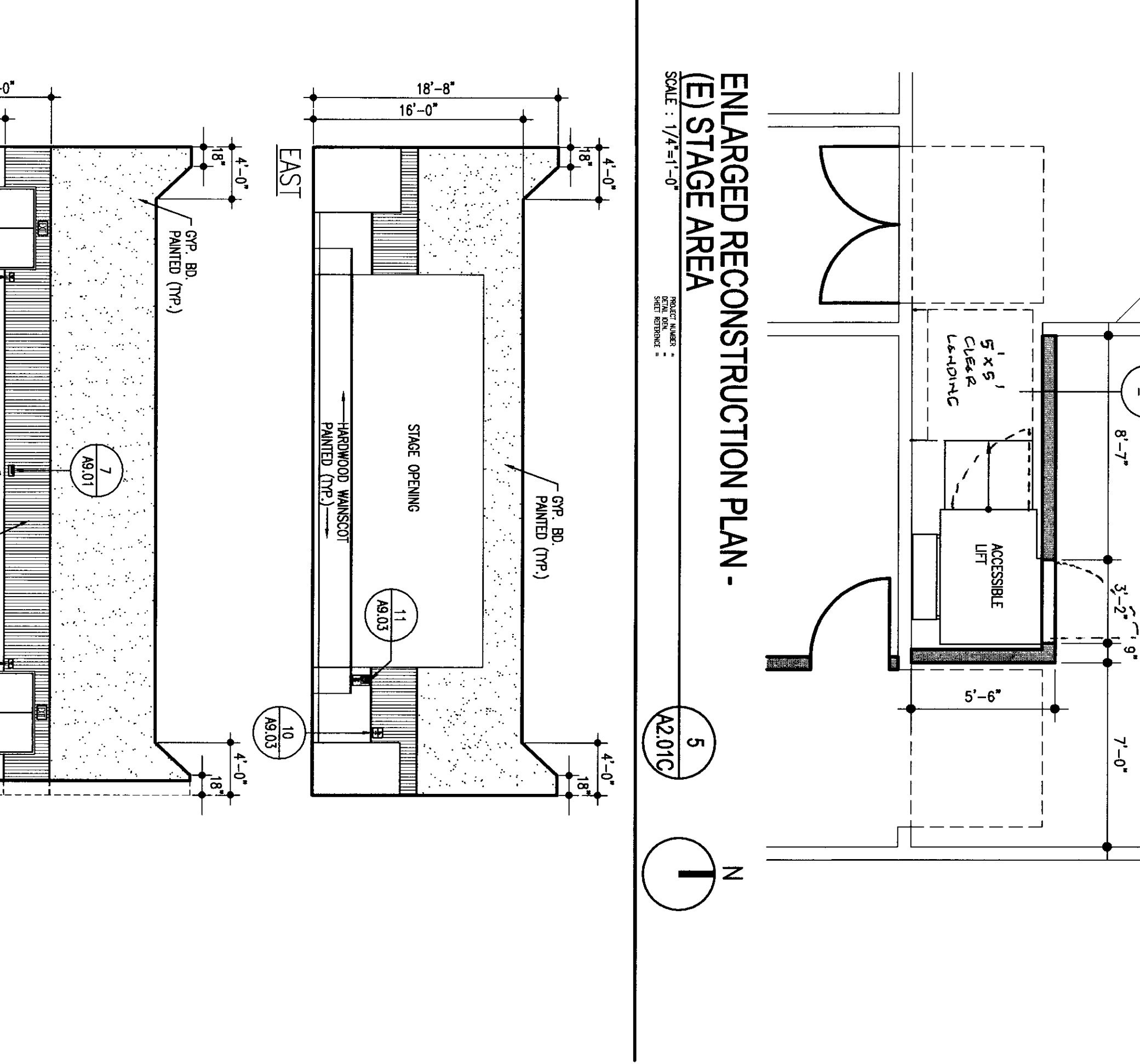
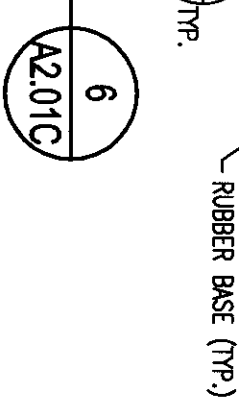
PARTITION WALL
SCALE: 1/2"=1'-0"
SHEET NO. 7



DEMOLITION PLAN -
BUILDING "G" - MULTI-PURPOSE
SCALE: 1/8"=1'-0"
SHEET NO. 1



ENLARGED DEMOLITION PLAN -
(E) STAGE AREA
SCALE: 1/4"=1'-0"
SHEET NO. 4



ENLARGED RECONSTRUCTION PLAN -
(E) STAGE AREA
SCALE: 1/4"=1'-0"
SHEET NO. 5



PROJECT NO. 1894
DATE: 1-28-2010
A2.01C

BUILDING "G" - MULTI-PURPOSE
DEMOLITION PLANS
RECONSTRUCTION PLANS
REFLECTED CEILING PLAN
INTERIOR ELEVATIONS

BAKERSFIELD CITY SCHOOL DISTRICT
MODERNIZATION PROJECT AT
EVERGREEN ELEMENTARY SCHOOL
2800 ROSE MARIE DRIVE
BAKERSFIELD, CA 93304

ARCHITECT
FLEWELLING & MOODY
architects education

HEADQUARTERS OFFICE
1415
P.O. BOX 3010
BAKERSFIELD, CALIFORNIA 93304
PHONE: (805) 833-8800
FAX: (805) 833-8800
EMAIL: info@flemw.com

MIYAKE WALEY OFFICE
1000
UNIVERSITY AVENUE
BAKERSFIELD, CALIFORNIA 93304
PHONE: (805) 833-8800
FAX: (805) 833-8800
EMAIL: miyake@flemw.com

ARCHITECT
AS ENGINEER/ARCHITECT CORPORATION

CONSULTANT
LICENSED ARCHITECT
STATE OF CALIFORNIA
NO. 41417
DATE: MAR 11, 2010

DIRECTION/STAMP
DATE: MAR 11, 2010
APPROVED: 1 2 8 1 7
DATE: MAR 11, 2010

DESIGNED BY
CHECKED BY
DATE

NO. DATE

REVISIONS

DATE

DESCRIPTION

DATE

DESCRIPTION

DATE

DESCRIPTION

DATE

DESCRIPTION

DATE

DESCRIPTION

DATE

DESCRIPTION

DATE

DESCRIPTION

DATE

DESCRIPTION

DATE

DESCRIPTION

DATE

DESCRIPTION

DATE

DESCRIPTION

DATE

DESCRIPTION

DATE

DESCRIPTION

DATE

DESCRIPTION

DATE

DESCRIPTION

DATE

DESCRIPTION