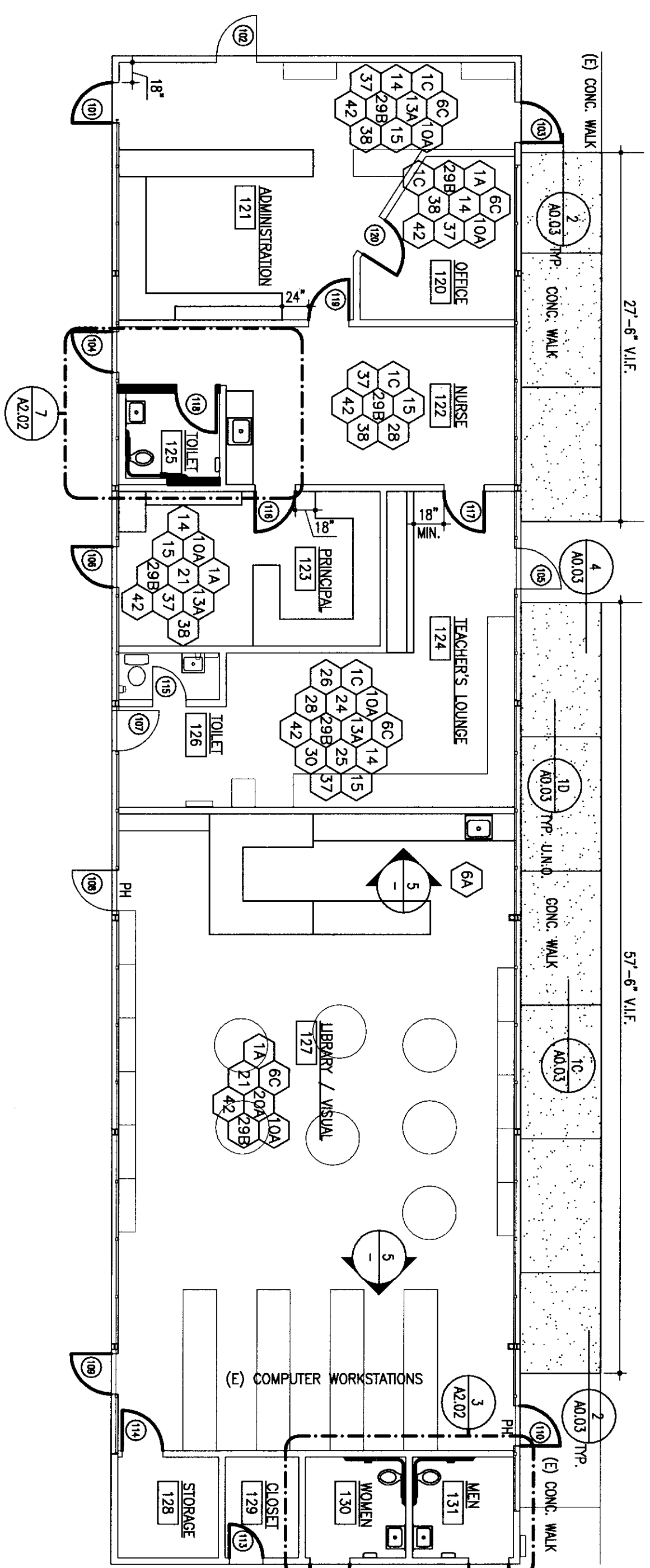


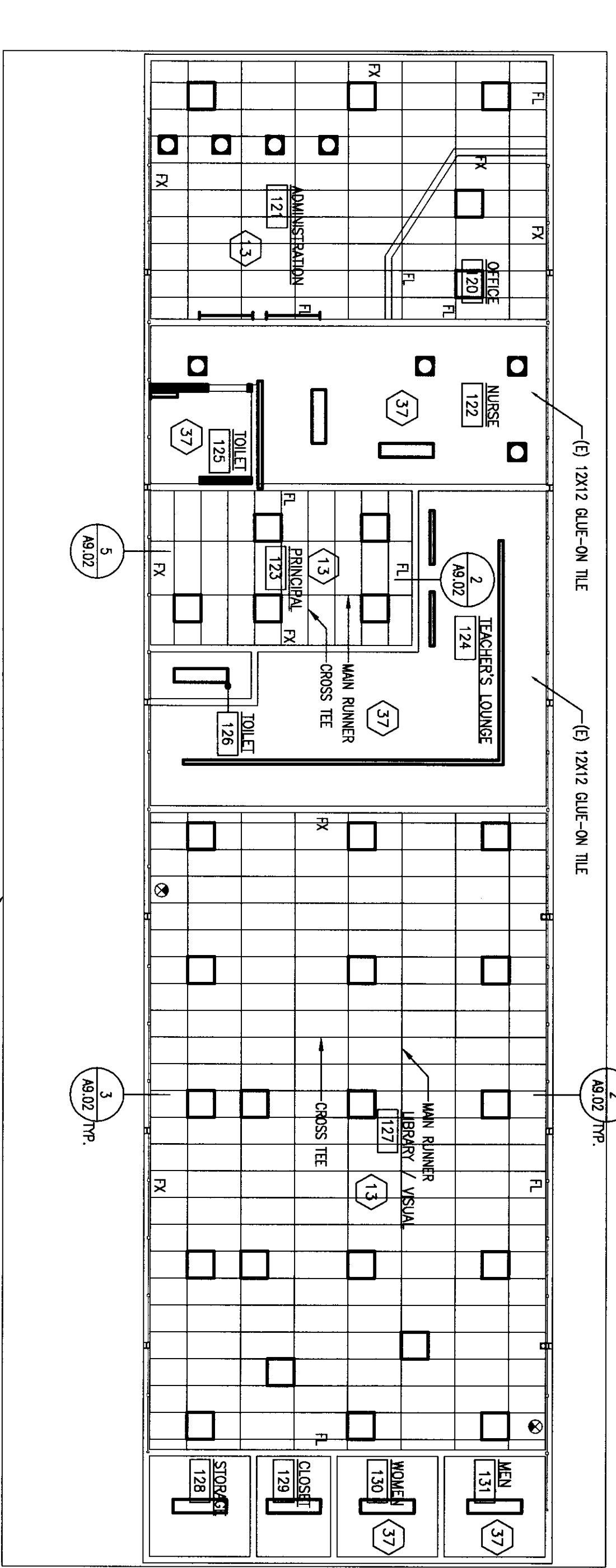
DEMOLITION PLAN - BUILDING "B" - ADMINISTRATION

SCALE: 1/8"=1'-0"



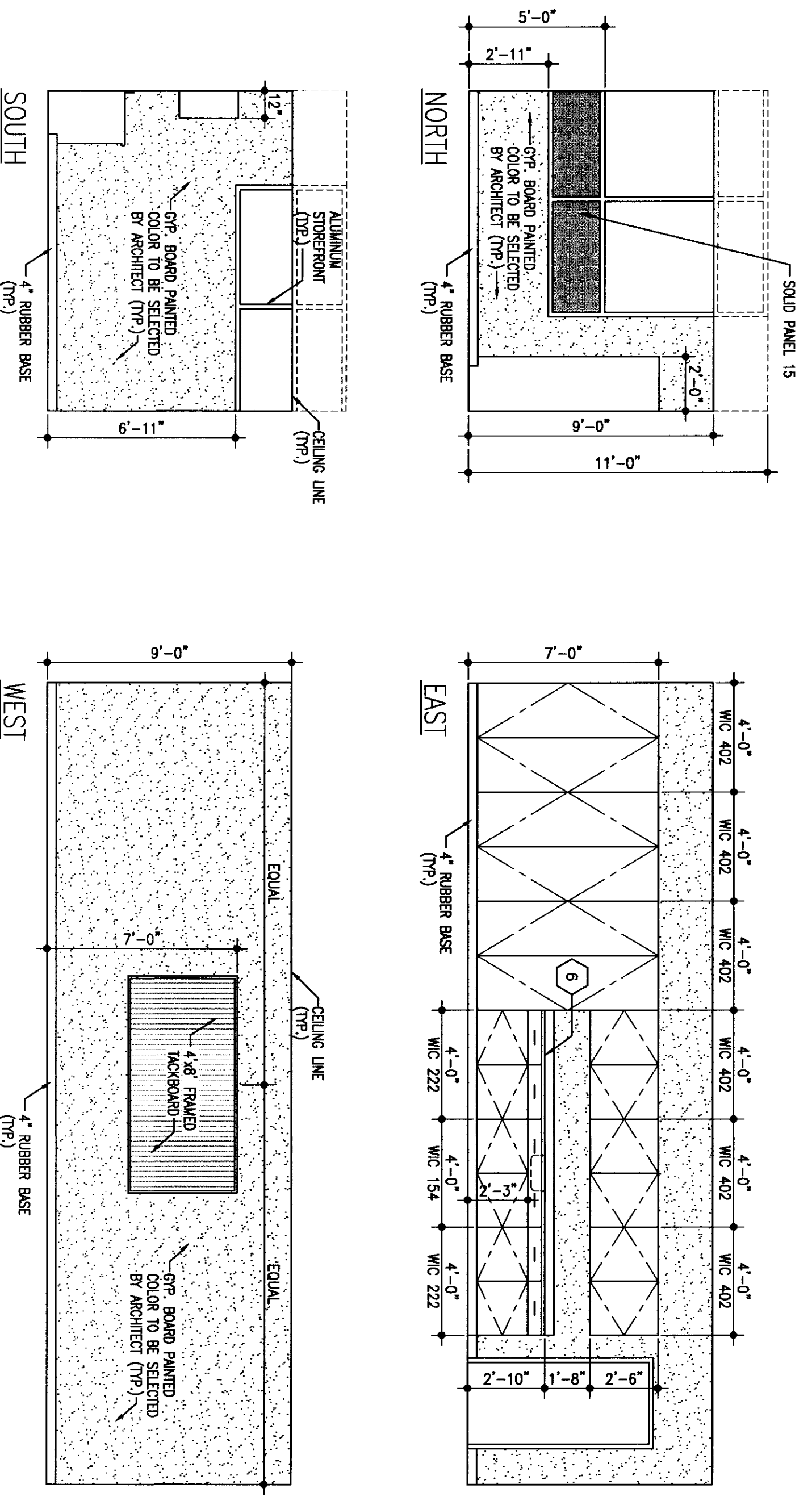
RECONSTRUCTION PLAN - BUILDING "B" - ADMINISTRATION

SCALE: 1/8"=1'-0"



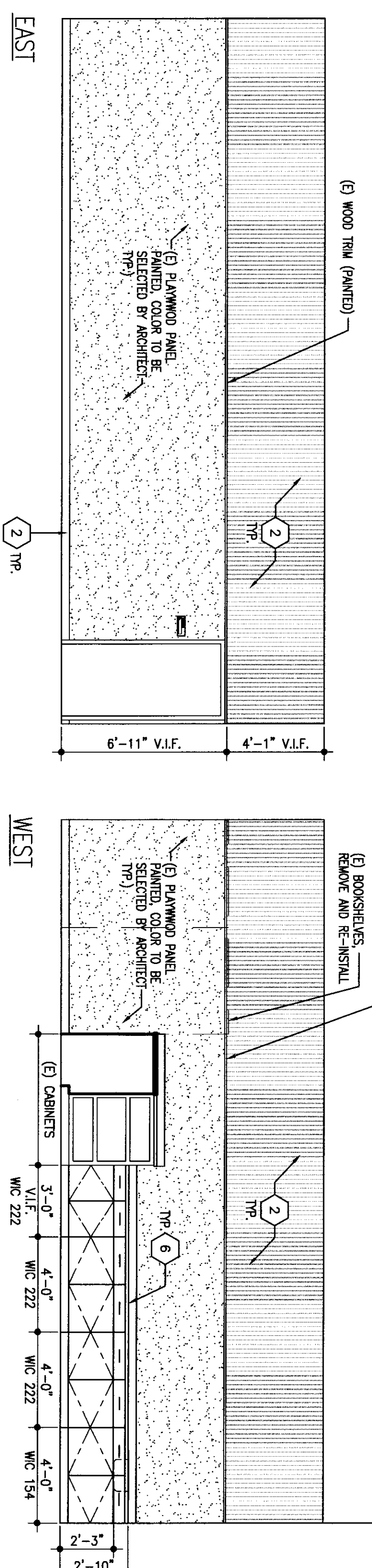
REFLECTED CEILING PLAN - BUILDING "B" - ADMINISTRATION

SCALE: 1/8"=1'-0"



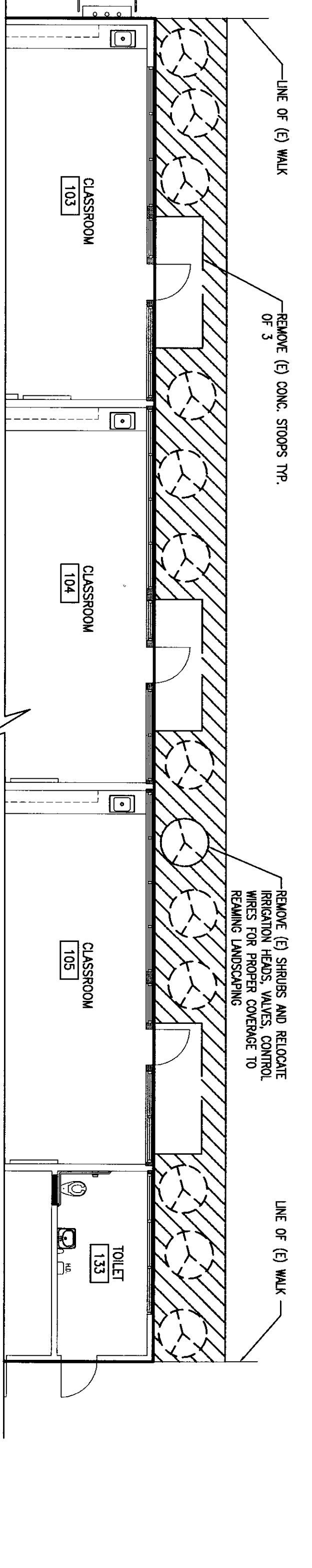
INTERIOR ELEVATIONS - BUILDING "A" - TEACHERS' LOUNGE (ROOM 107)

SCALE: 1/4"=1'-0"



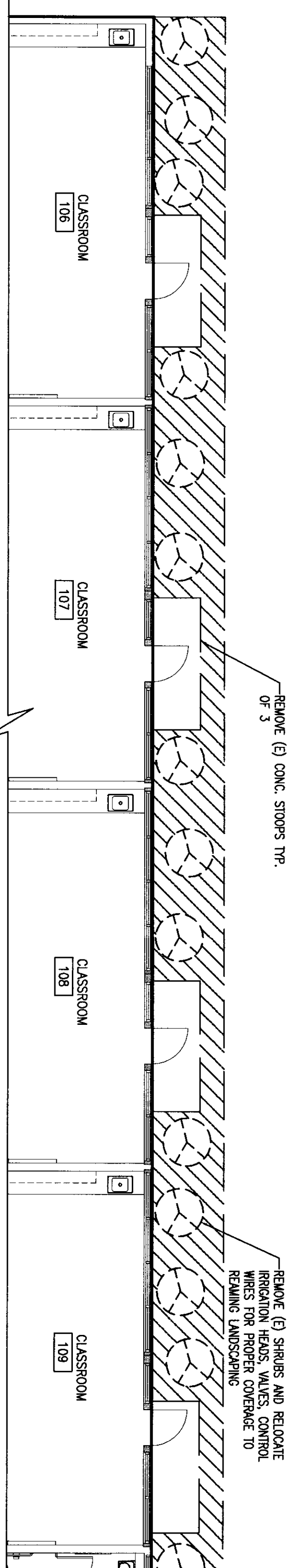
INTERIOR ELEVATIONS - BUILDING "B" - LIBRARY / VISUAL (ROOM 127)

SCALE: 1/4"=1'-0"



PARTIAL DEMOLITION PLAN - BUILDING "C" - CLASSROOMS

SCALE: 1/8"=1'-0"



PARTIAL DEMOLITION PLAN - BUILDING "D" - CLASSROOMS

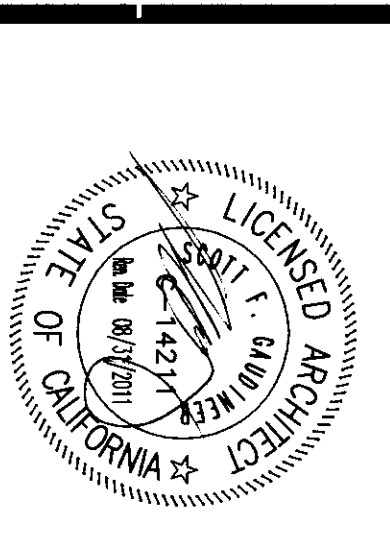
SCALE: 1/8"=1'-0"

FLEWELLIN & MOODY
architects education

HEADQUARTERS OFFICE:
1415 Broadway, Suite 100
Berkeley, California 94701
510.841.8777 FAX 510.841.8777
Email: flewellin@flewellin.com

MILPITAS VALLEY OFFICE:
681 Sycamore Ave., Suite 100
Milpitas, California 95035
408.382.0771 FAX 408.382.0771
Email: flewellin@flewellin.com

An Employee Owned Corporation



CONTRACT NO. _____

DATE _____

PROJECT: MODERNIZATION PROJECT AT EVERGREEN ELEMENTARY SCHOOL

OWNER: BAKERSFIELD CITY SCHOOL DISTRICT

ARCHITECT: FLEWELLIN & MOODY

DATE: 11.28.2010

200 No. _____

1894

1-28-2010

A2.01B

PROJECT: MODERNIZATION PROJECT AT EVERGREEN ELEMENTARY SCHOOL

OWNER: BAKERSFIELD CITY SCHOOL DISTRICT

ARCHITECT: FLEWELLIN & MOODY

DATE: 11.28.2010