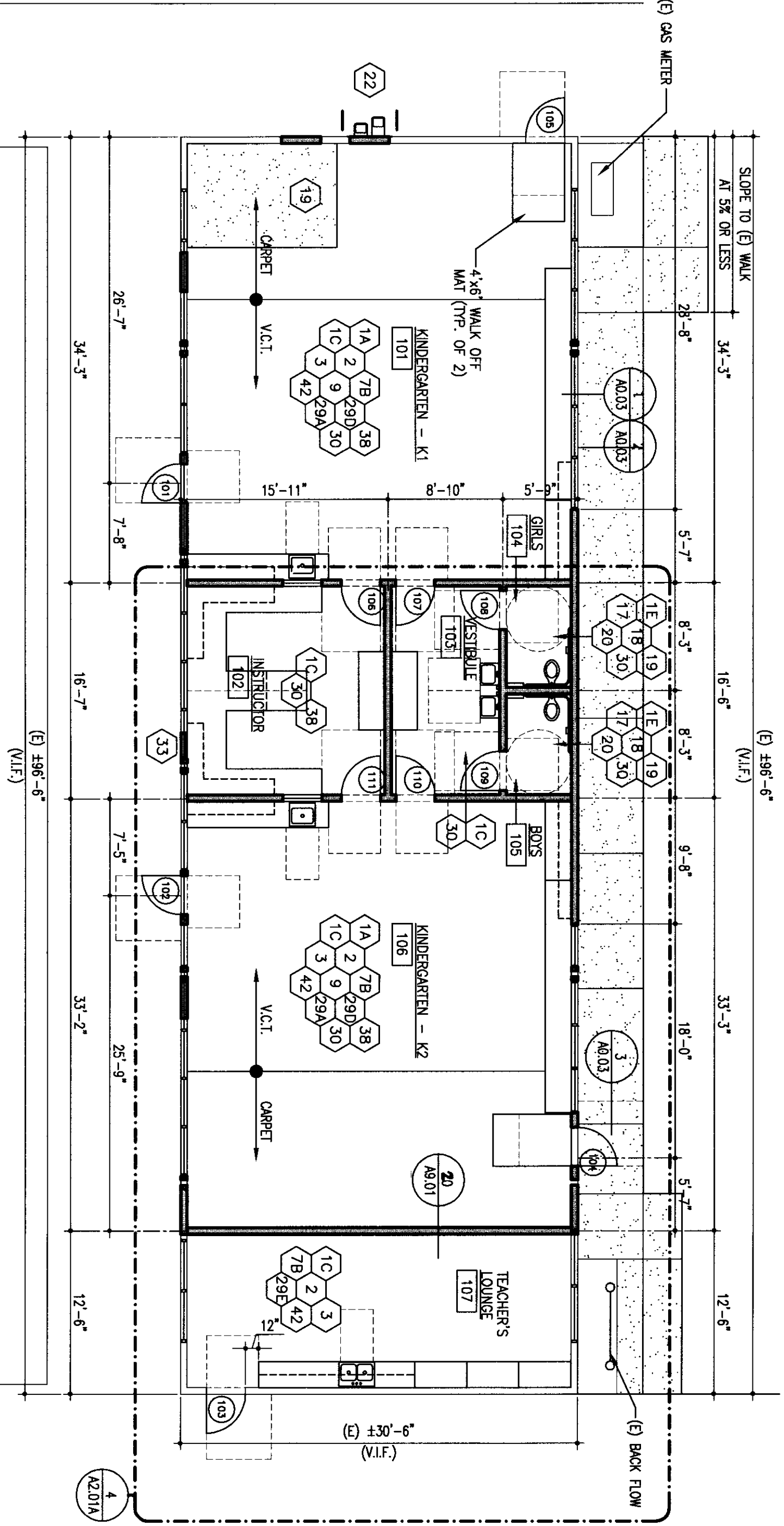
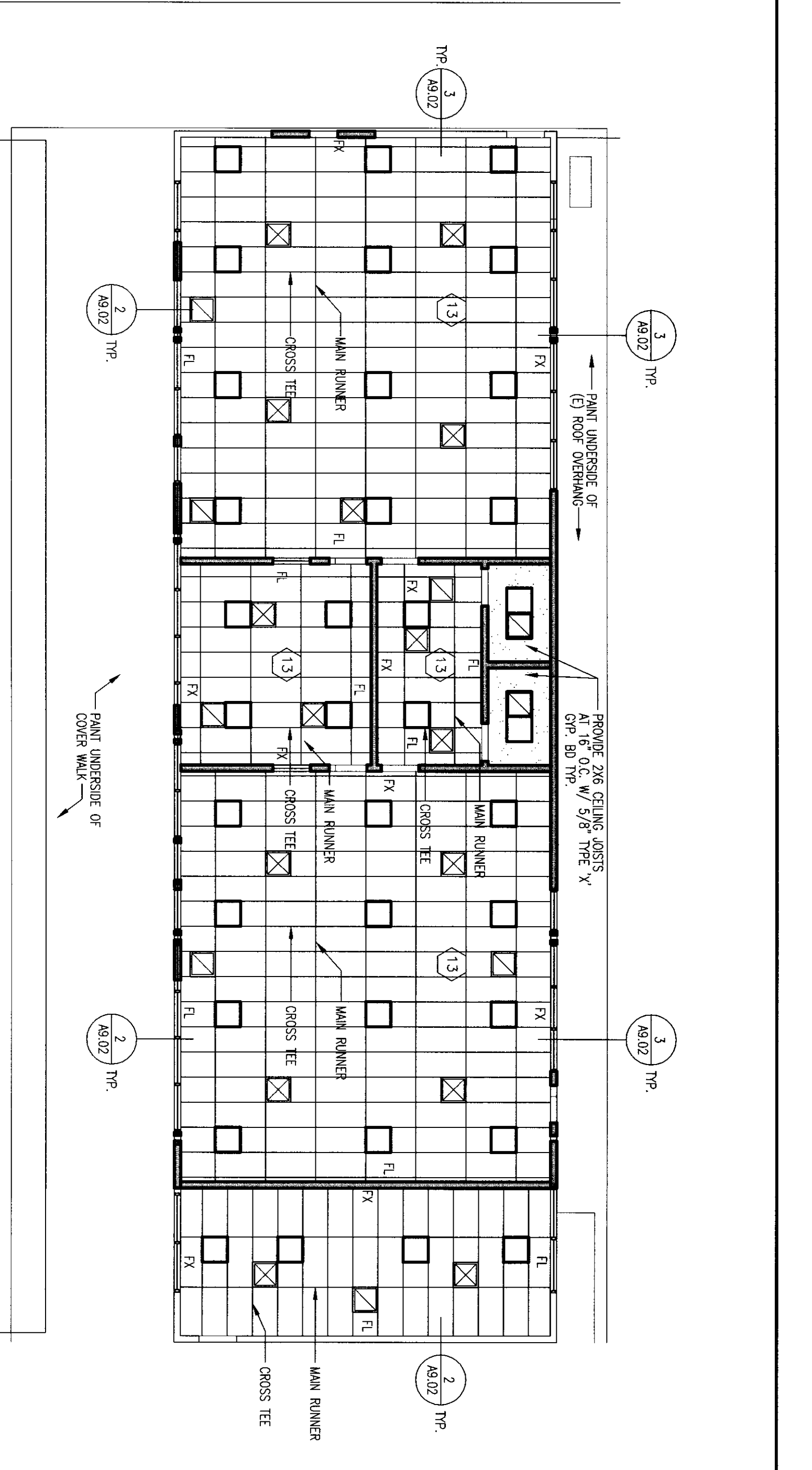


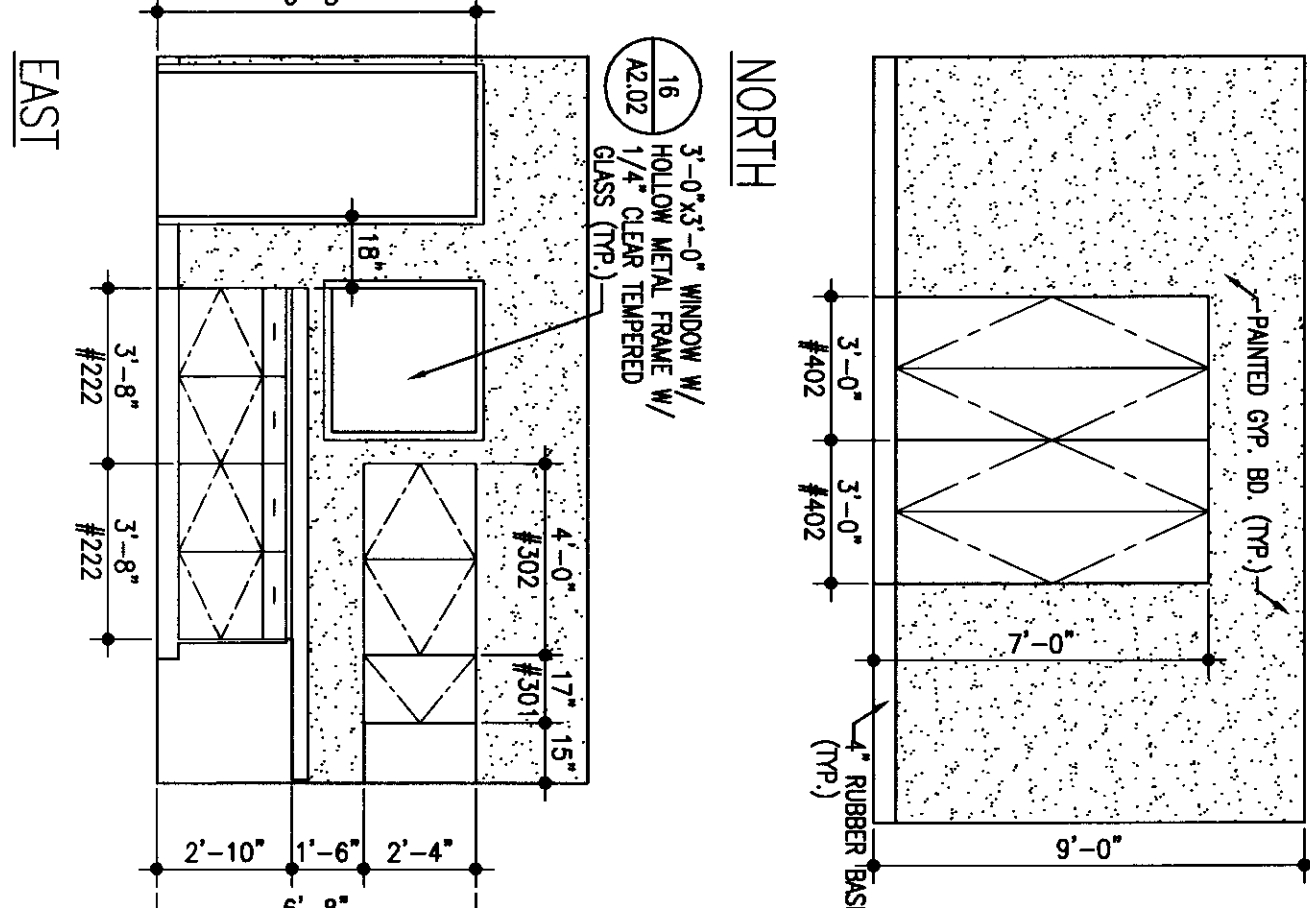
DEMOLITION PLAN -
BUILDING "A" - KINDERGARTEN
SCALE: 1/8"=1'-0"



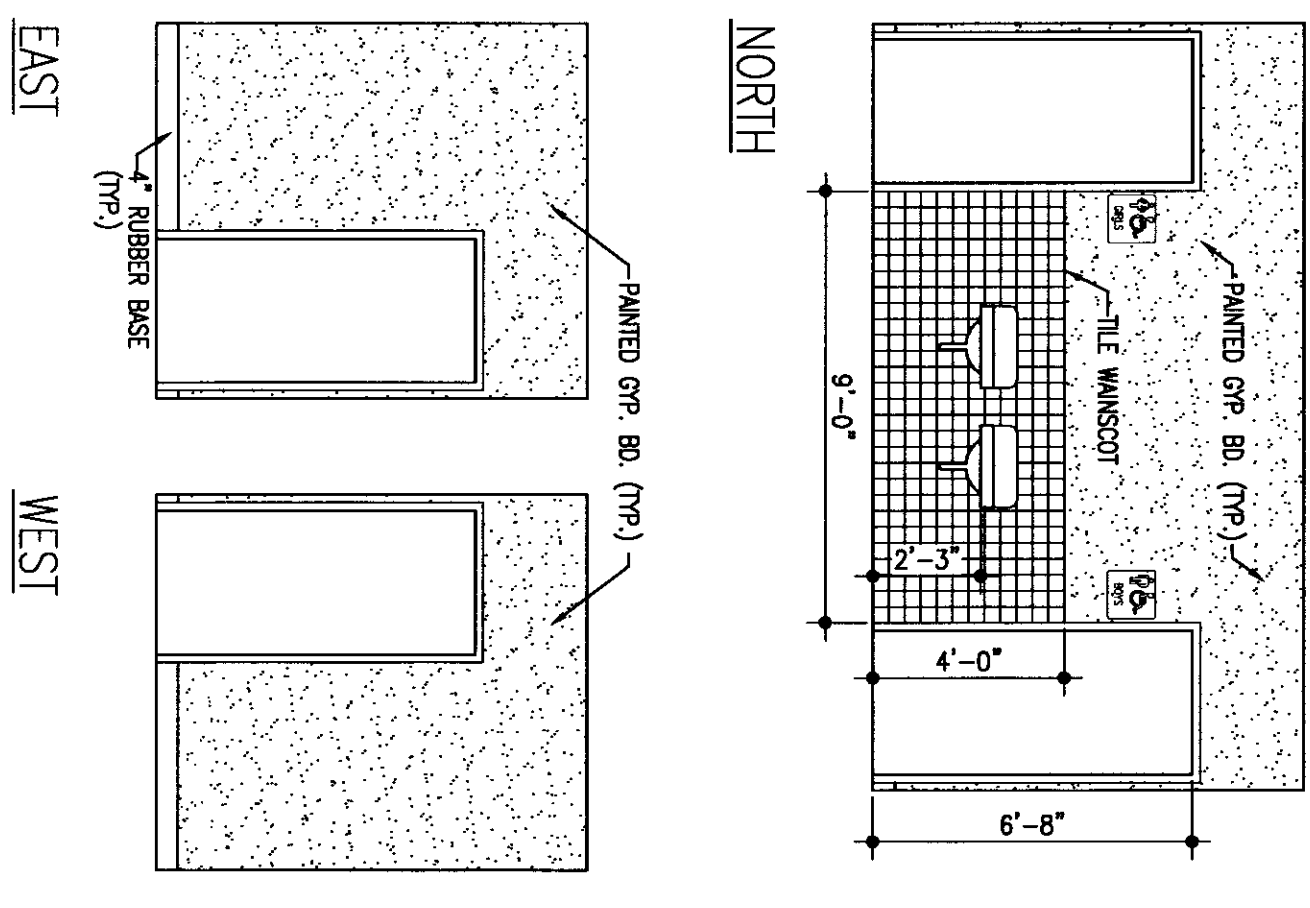
RECONSTRUCTION PLAN -
BUILDING "A" - KINDERGARTEN
SCALE: 1/8"=1'-0"



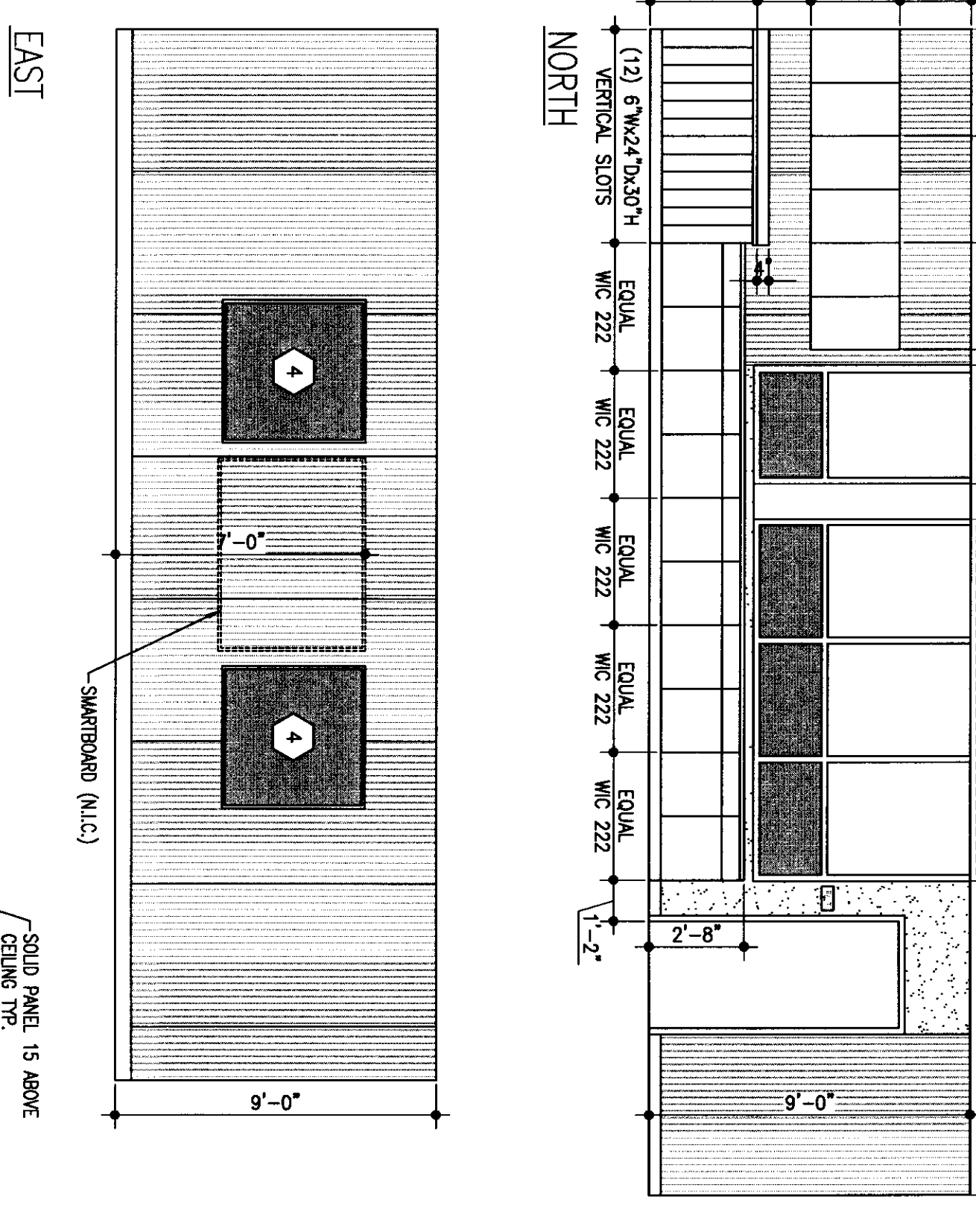
REFLECTED CEILING PLAN -
BUILDING "A" - KINDERGARTEN
SCALE: 1/8"=1'-0"



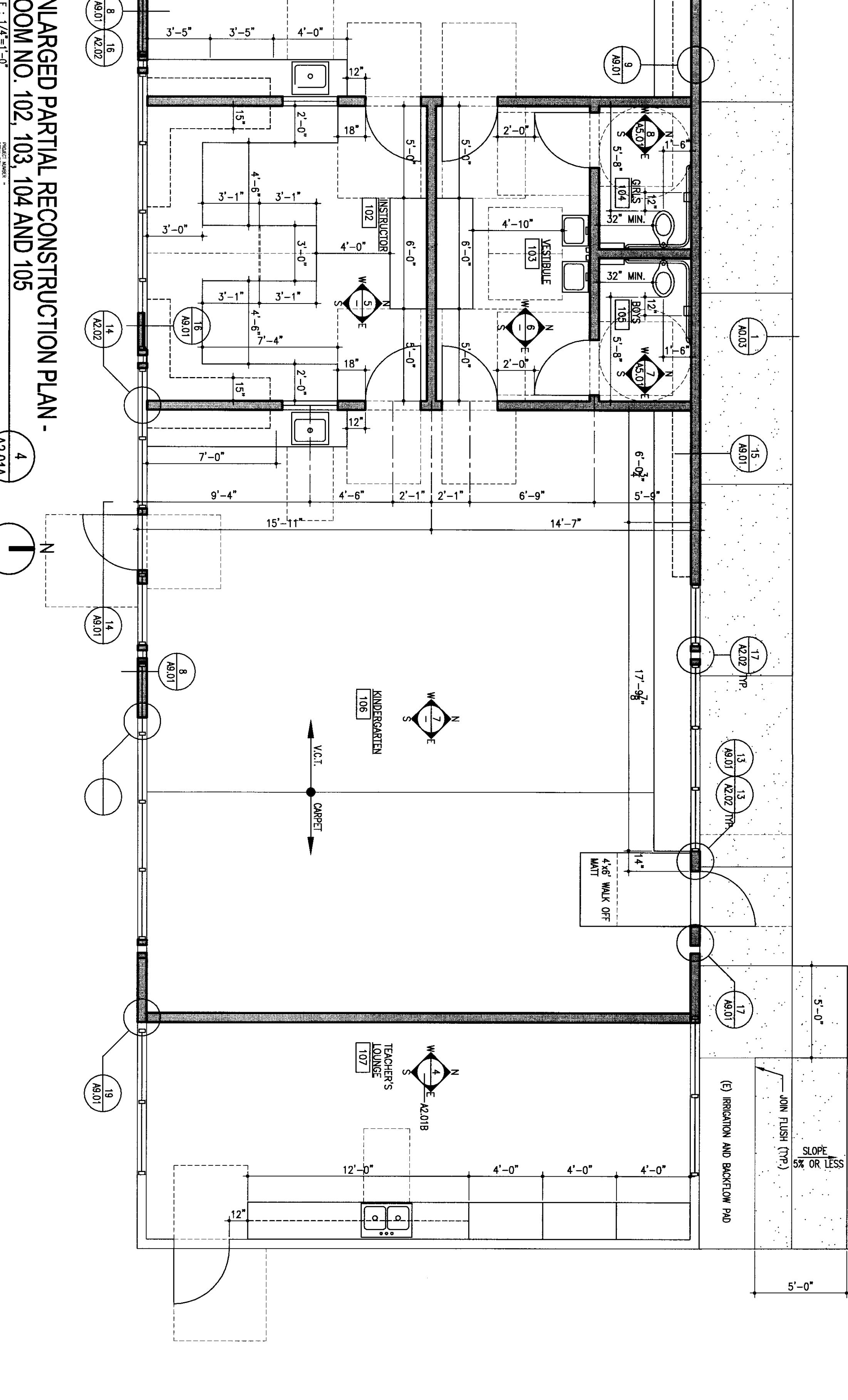
INT. ELEVS. - ROOM 102
SCALE: 1/4"=1'-0"



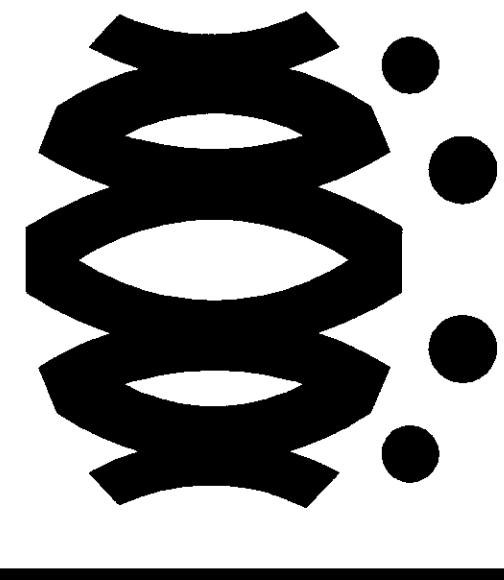
SOUTH INT. ELEVS. - ROOM 103
SCALE: 1/4"=1'-0"



INT. ELEVS. - ROOM 106
SCALE: 1/4"=1'-0"



ENLARGED PARTIAL RECONSTRUCTION PLAN -
ROOM NO. 102, 103, 104 AND 105
SCALE: 1/4"=1'-0"

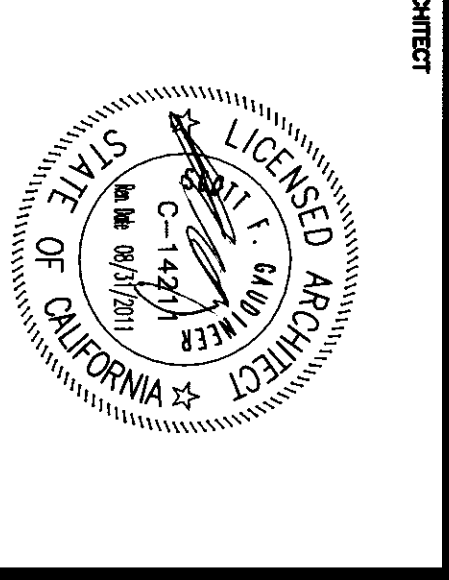


FLEWELLIN & MOODY
architects + education

HEADQUARTERS OFFICE:
14 Duval in the Park
Fremont, California 94531
650.487.8787 FAX 650.487.8777
Email: info@flewellingmoody.com

ANTELOPE VALLEY OFFICE:
Lamar, California 95334
916.847.0777 FAX 916.847.0344
Email: Antelope@flewellingmoody.com

All Employees Owned Corporation



DATE: APR 03 11 3 8 11
AC: JEM/SS/BZ
DATE: MAR 18 2010

IDENTIFICATION STAMP
DR. OF THE STATE ARCHITECT

Drawn by: _____
Checked by: _____
Reviewed by: _____
Scale: _____
No. _____
Revision: _____

**MODERNIZATION PROJECT AT
EVERGREEN ELEMENTARY SCHOOL**
2600 ROSE WARE DRIVE
BAKERSFIELD, CA 93304

BAKERSFIELD CITY SCHOOL DISTRICT

**BUILDING "A" - KINDERGARTEN
DEMOLITION PLAN
RECONSTRUCTION PLAN
REFLECTED CEILING PLAN
INTERIOR ELEVATIONS**

1894
A2.01A
1-26-2010