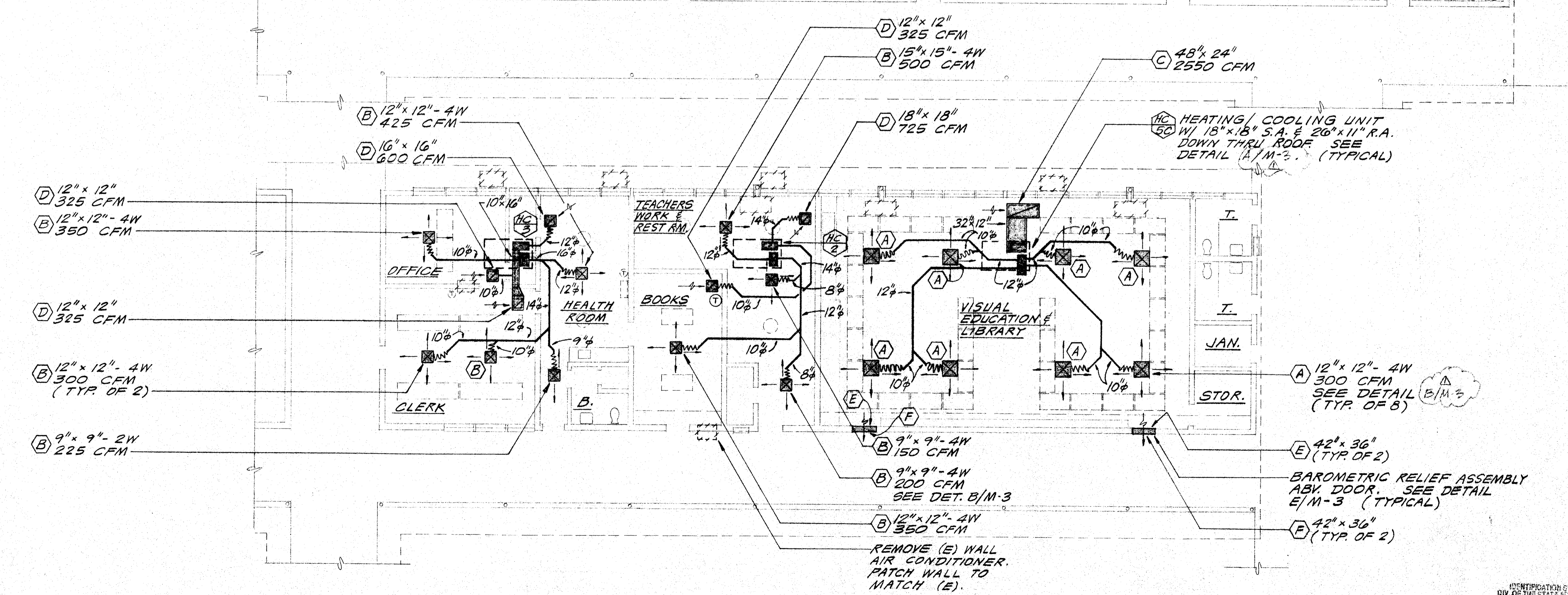
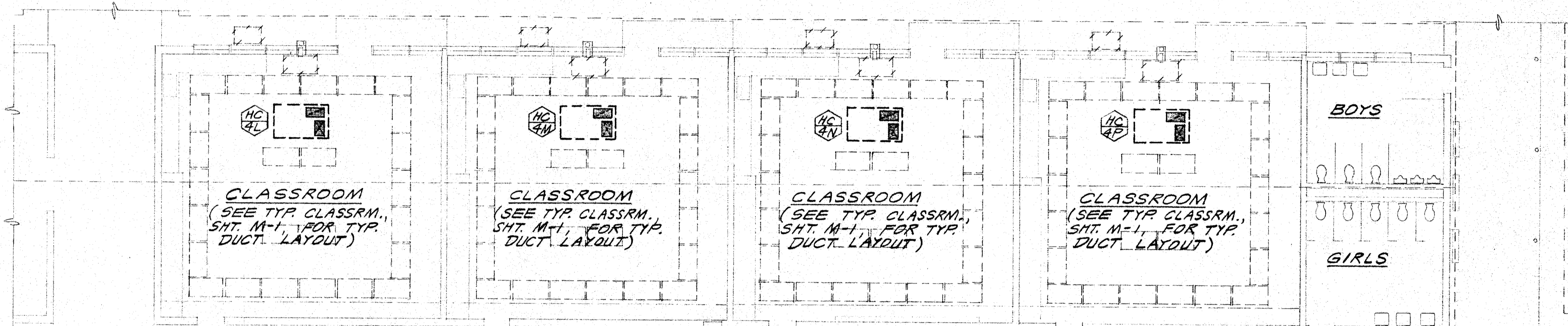
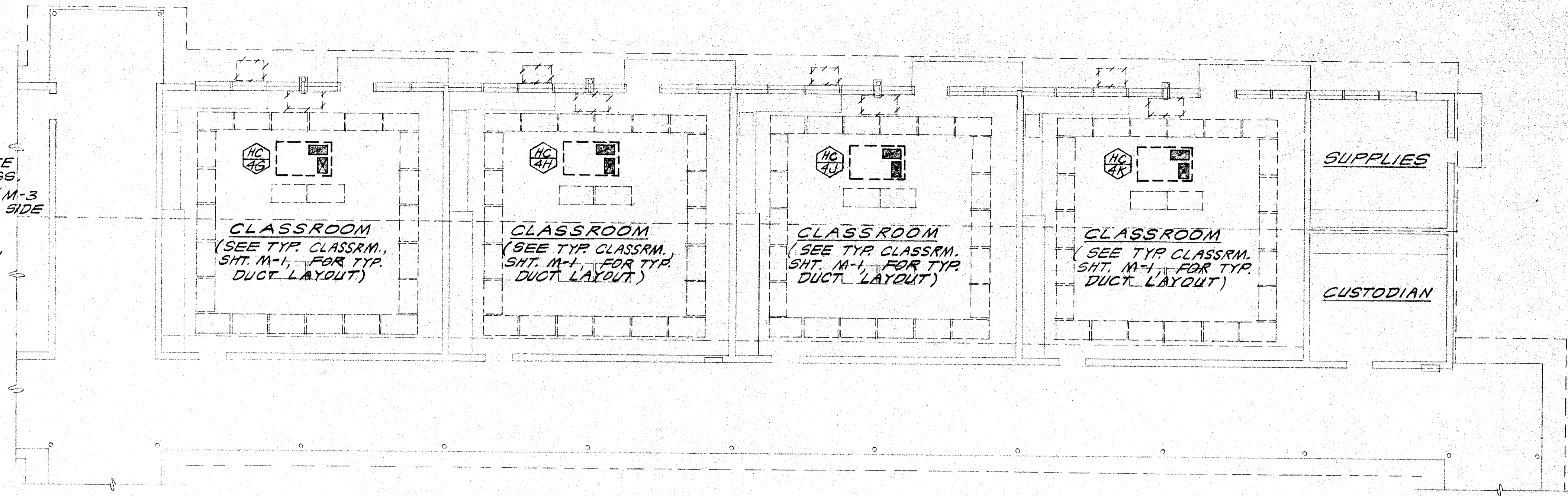


**SECTION AT TYPICAL CLASSROOM**

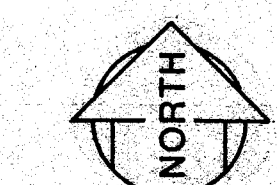
SCALE: 3/8" = 1'-0"

A  
M-2



**AIR CONDITIONING PLAN**

SCALE: 1/8" = 1'-0"



IDENTIFICATION STAMP  
DIV. OF THE STATE ARCHITECT  
OFFICE OF REGULATION SERVICES  
APR 6 7 1997  
DATE JUN 10 1997



REVISIONS  
 Δ DEB/BEW  
 5/21/97

**HEATING & COOLING MODIFICATIONS**  
**CASTRO LANE ELEMENTARY SCHOOL**  
 2600 ROSE MARIE DRIVE  
 BAKERSFIELD CITY SCHOOL DISTRICT

**Lawrence • Nye • Becker Associates**  
 CONSULTING MECHANICAL ENGINEERS, INCORPORATED  
 1400 Easton Drive, Suite 130  
 Bakersfield, California 93306  
 (805) 322-9211 FAX: 805-322-4337

DATE 4-4-97  
 DRAWN RAR  
 CHECKED GLN  
 PROJECT 76298  
 SHEET M-2