

NOTES (THIS SHEET ONLY):

- 1 8" x 8" x 4"D NEMA 1, SCREW COVER CAN INSTALLED IN ACCESSIBLE ATTIC SPACE ABOVE T-BAR CEILING, U.O.N.: MOUNT WITHIN 10' OF UNIT.
- 2 PENETRATE FEED THRU ROOF IN SAME OPENING CREATED FOR HVAC DUCTING. COORDINATE LOCATION WITH ARCHITECT AND MECHANICAL CONTRACTOR.
- 3 1/2"C - 2 #10 + 1 #12 GND (CU-THWN).
- 4 1 1/2"C - 3 #4 + 1 #8 GND (CU-THWN).
- 5 3/4"C - 3 #10 + 1 #10 GND (CU-THWN).
- 6 8" x 8" x 4"D NEMA SCREW COVER CAN INSTALLED IN ACCESSIBLE ATTIC SPACE ABOVE GYPSBOARD CEILING. MOUNT WITH 10' OF UNIT. PROVIDE ACCESS PANEL AS REQUIRED.
- 7 30/2 NON-FUSED, HEAVY DUTY RATED NEMA 3R, DISCONNECT SWITCH.
- 8 PROVIDE CONDUIT, WIRE (MATCH EXISTING) AND J-BOXES AS REQUIRED TO RELOCATE FIXTURE AS SHOWN AND TO RECONNECT ON SAME EXISTING CIRCUITS AND SWITCHES. TYPICAL IN CLASSROOMS.
- 9 REMOVE EXISTING FIXTURE AND RETURN TO OWNER (TO CLEAR AREA FOR NEW DUCT WORK). REROUTE AND RECONNECT FEED THRU CIRCUITS AS BEFORE. PROVIDE CONDUIT, WIRE (TO MATCH EXISTING) AND BOX AS REQUIRED.
- 10 MOUNT TRANSFORMER, PRIMARY NON-FUSED DISCONNECT AND SECONDARY ENCLOSED CIRCUIT BREAKER ON WALL STACK AS REQUIRED. PROVIDE UNISTRUT AS REQUIRED BOLTED TO WALL FOR MOUNTING PER DETAIL #5/E-5.
- 11 TO BUILDING "H" CONCEALED IN ACCESSIBLE ATTIC. SEE NOTE 18, SHEET #E3 FOR CONTINUATION.
- 12 TO BUILDING "H" CONCEALED IN ACCESSIBLE ATTIC. SEE NOTE 19, SHEET #E3 FOR CONTINUATION.
- 13 TO BUILDING "D" CONCEALED IN ACCESSIBLE ATTIC. SEE NOTE 20, SHEET #E3 FOR CONTINUATION.
- 14 TO BUILDING "B" CONCEALED IN ACCESSIBLE ATTIC. SEE NOTE 21, SHEET #E3 FOR CONTINUATION.
- 15 40/2P NEMA 3R, SECONDARY ENCLOSED CIRCUIT BREAKER.
- 16 3/4"C - 2 #8 + 1 #10 GND (CU-THWN).
- 17 RUN UP WALL FROM PANEL ONTO WALL COVER, THEN TO PULL CAN.
- 18 PENETRATE OUT BACK OF PULL CAN THRU WALL INTO ACCESSIBLE ATTIC SEAL PENETRATION AS REQUIRED.
- 19 1"C - 3 #8 + 1 #10 GND (CU-THWN).

NOTE:

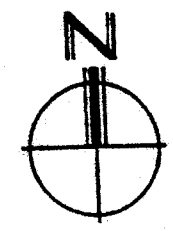
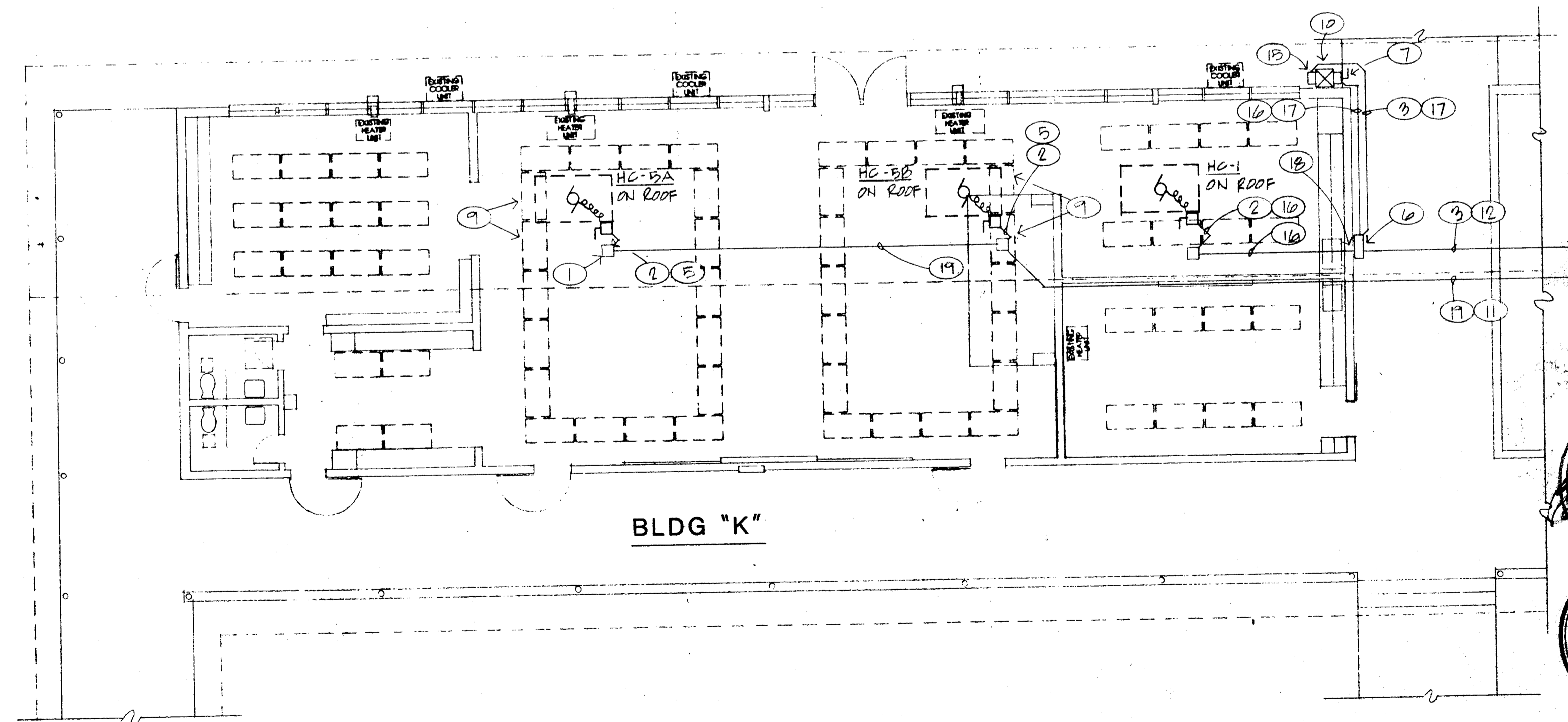
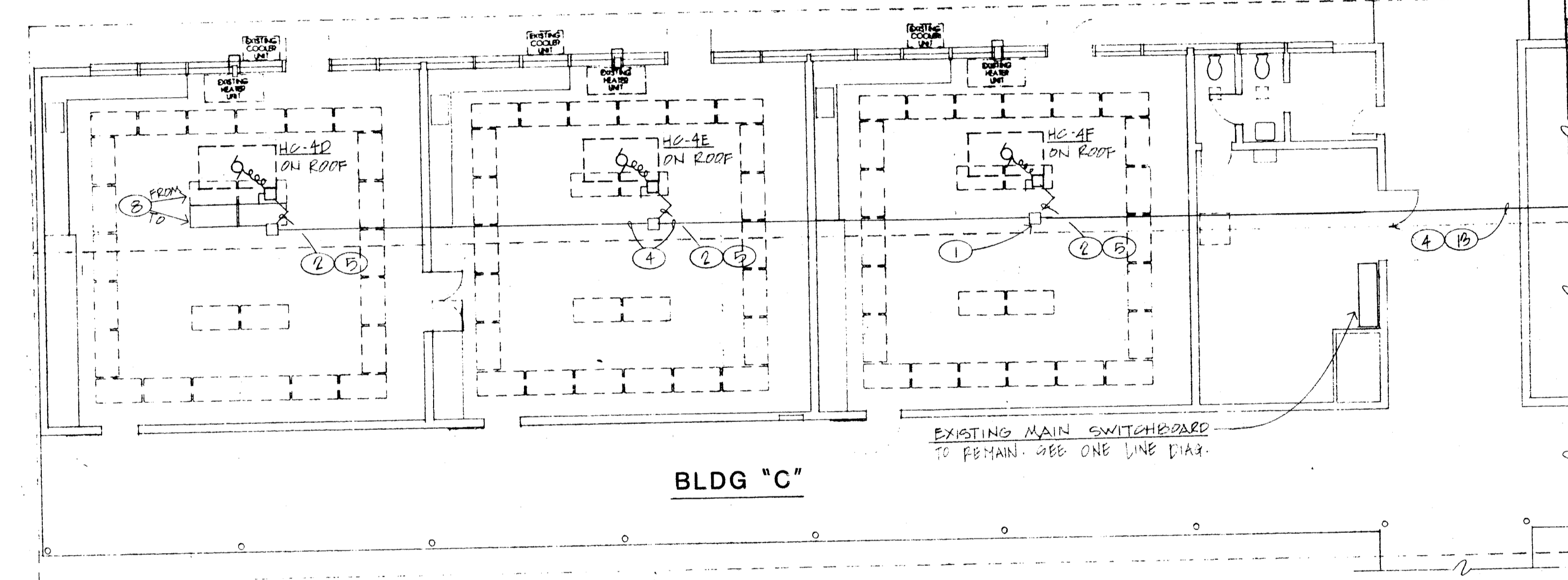
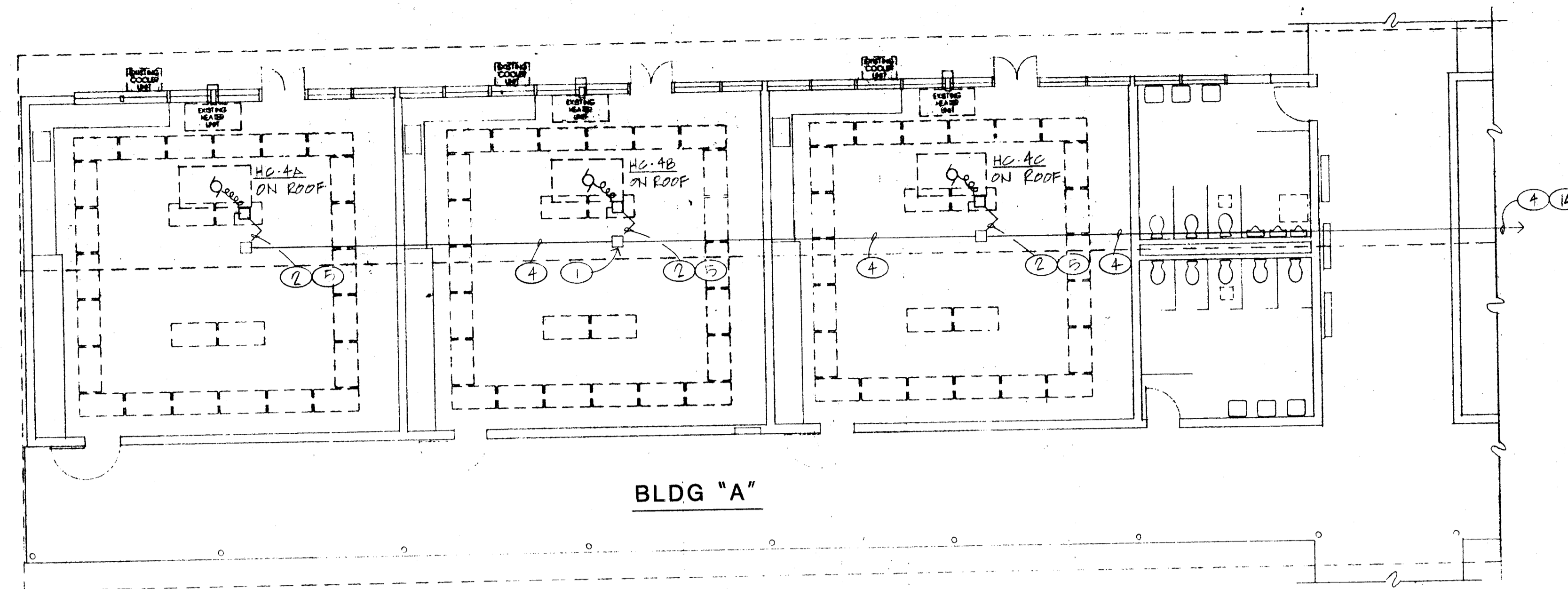
RUN ALL CONDUIT CONCEALED IN ACCESSIBLE ATTIC SPACES, U.O.N. WHERE NOT POSSIBLE RUN SURFACE CONDUIT, SIZED AS NOTED AND PAINT TO MATCH SURFACE ITS MOUNTED TO. VERIFY EXACT ROUTING AT SITE.

NOTE:

VERIFY EXACT LOCATION AND REQUIREMENTS OF ALL H.V.A.C. EQUIPMENT WITH CONTRACTOR PRIOR TO ROUGH-IN. H.V.A.C. EQUIPMENT IS BEING SUPPLIED WITH INTEGRAL SERVICE RECEPTACLE. CONDUIT AND WIRE FOR CONTROLS BY OTHERS.

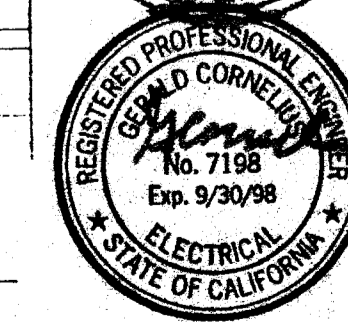
NOTE:

2 LAMPS TO BE REMOVED FROM EACH LIGHT FIXTURE BY SCHOOL DISTRICT. NOT PART OF CONTRACT.



BLDG'S "A", "C" & "K" ELECTRICAL PLANS

SCALE: 1/8" = 1'-0"



CORNELIUS - SING
 CONSULTING GROUP, INC.
 Consulting Electrical Engineers
 918 W. Main St. - Ph. 733-2671
 Visalia, California 93291

Lawrence · Nye · Becker Associates
 CONSULTING MECHANICAL ENGINEERS, INCORPORATED
 1400 Easton Drive, Suite 130
 Bakersfield, California 93309
 (805) 322-9211 FAX 805-322-6337

HEATING & COOLING MODIFICATIONS
CASTRO LANE ELEMENTARY SCHOOL
 2600 ROSE MARIE DRIVE
 BAKERSFIELD CITY SCHOOL DISTRICT

DATE	4-6-99
DRAWN	RTS
CHECKED	JLJ
PROJECT	910298
SHEET	E-2
OF 5	