

HILLMAN & NOWELL
STRUCTURAL ENGINEERS
500 MARKET STREET
SAN FRANCISCO, CALIF.

OFFICE OF SUPERINTENDENT OF SCHOOLS
DIVISION OF ARCHITECTURE
DATE

STATE OF CALIFORNIA
DEPARTMENT OF PUBLIC WORKS
DIVISION OF ARCHITECTURE

STATE OF CALIFORNIA - DEPARTMENT OF PUBLIC WORKS
ARCHITECT DIVISION OF ARCHITECTURE
PROJECT NO. 11300
PROJECT NAME: EMERSON JUNIOR HIGH SCHOOL
NOV 1 - 1933
ARCHITECT: HILLMAN & NOWELL
SUPERVISOR: J. M. HEDGECOCK

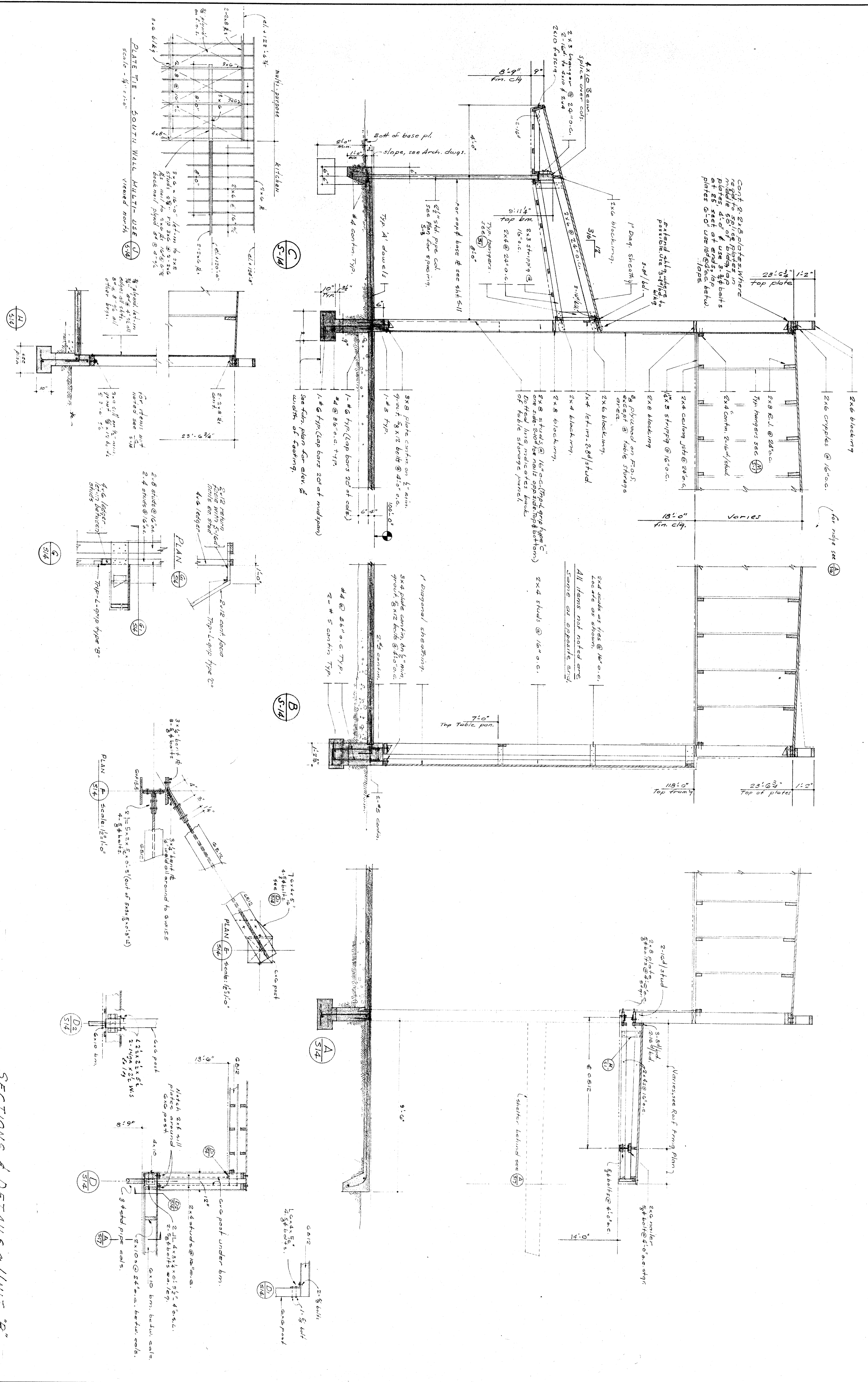
BAKERFIELD CITY SCHOOLS
1600 W. ST. BAKERFIELD, CALIF.
BOARD OF TRUSTEES

EMERSON JUNIOR HIGH SCHOOL
FOURTH AND P STREET
CALIFORNIA

EMERSON JUNIOR HIGH SCHOOL
FOURTH AND P STREET
CALIFORNIA

EMERSON JUNIOR HIGH SCHOOL
FOURTH AND P STREET
CALIFORNIA

EMERSON JUNIOR HIGH SCHOOL
FOURTH AND P STREET
CALIFORNIA



SECTIONS & DETAILS - UNIT 'B'

CHECK AND VERIFY ALL DIMENSIONS AND CONDITIONS AT JOB SITE BEFORE PROCEEDING WITH THE WORK. REPORT ANY DISCREPANCIES TO THE ARCHITECT.