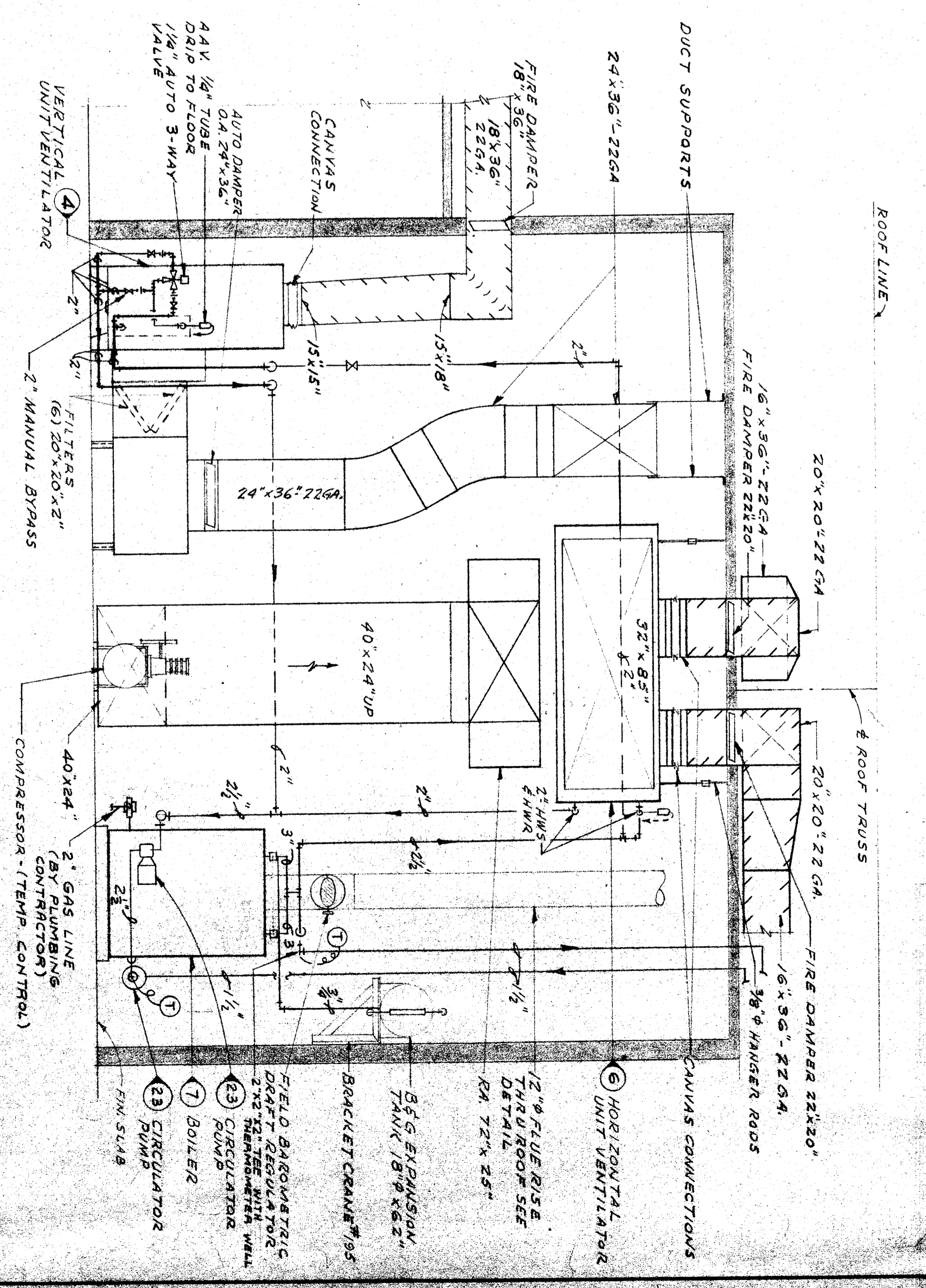
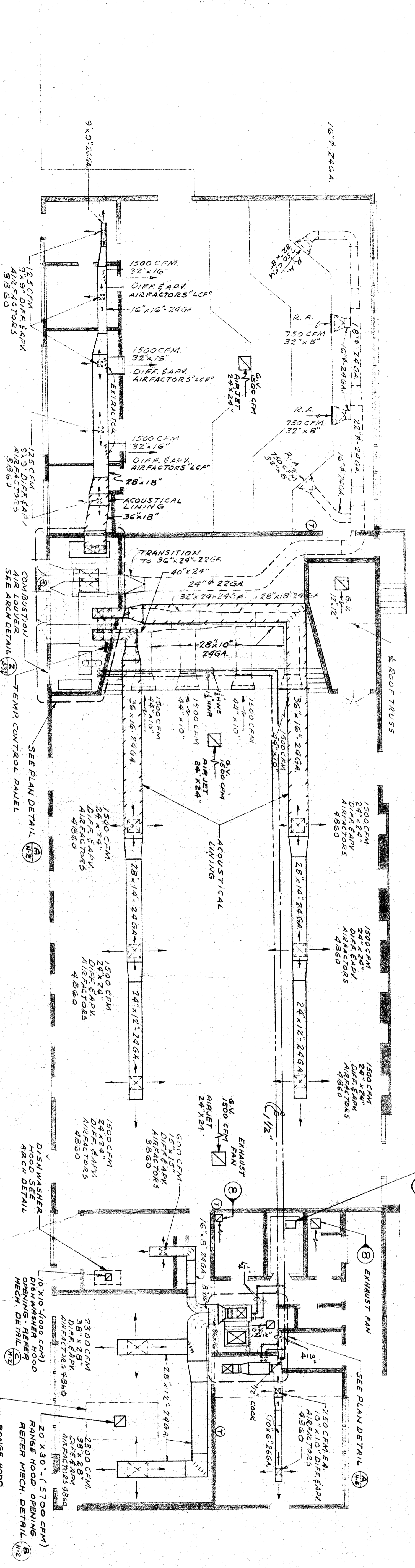


PLAN-DETAIL A
HEATER ROOM N2-B-13
SCALE: 3/8"=1'-0"

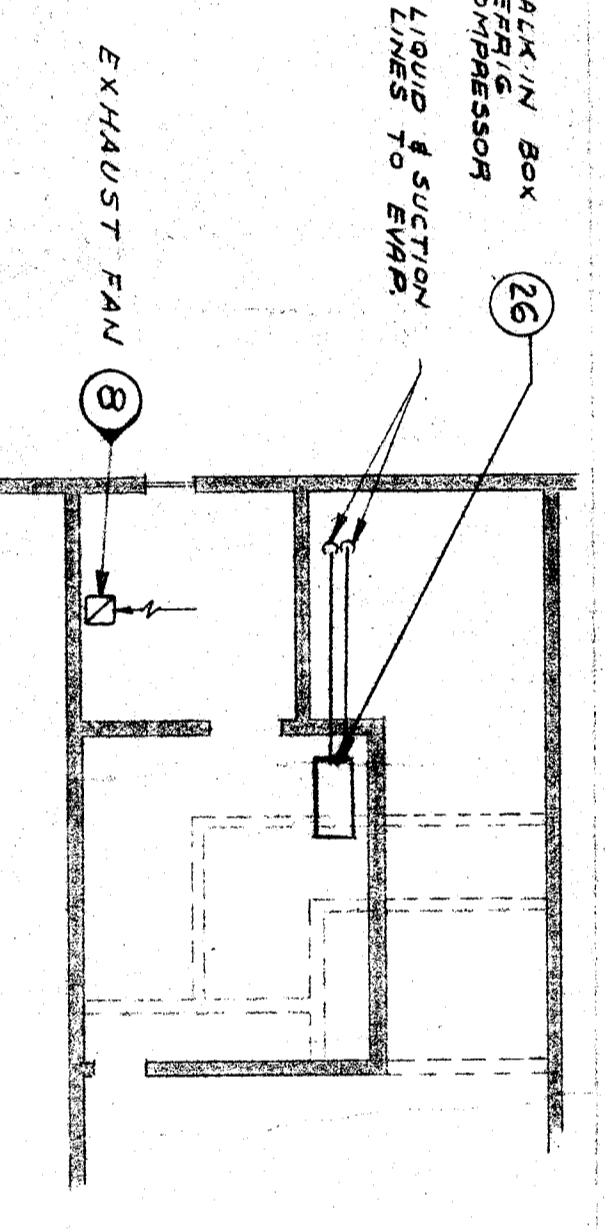
SECTION A-A H-Z
SCALE: 3/8"=1'-0"



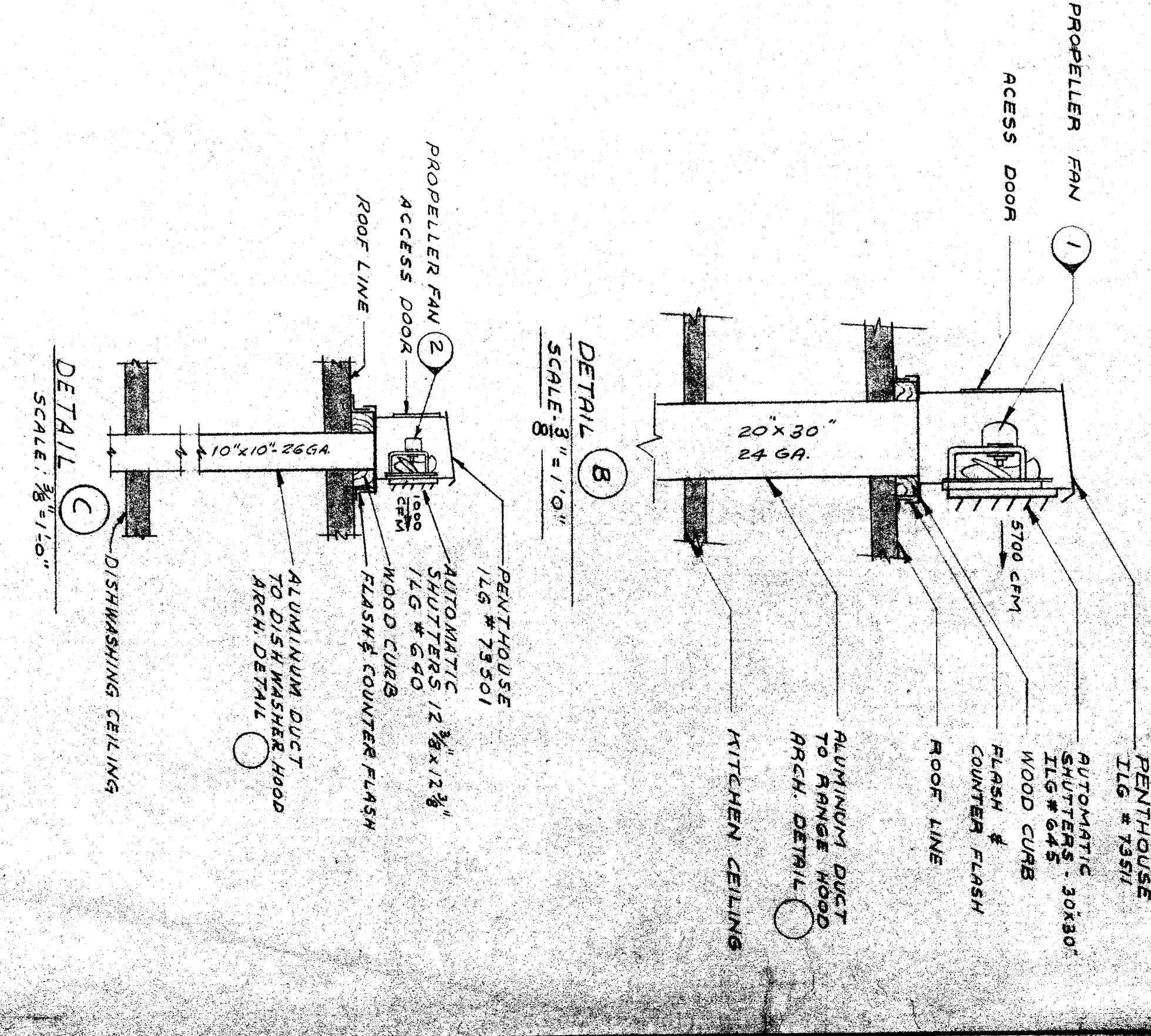
SECTION B-B H-Z
SCALE: 3/8"=1'-0"



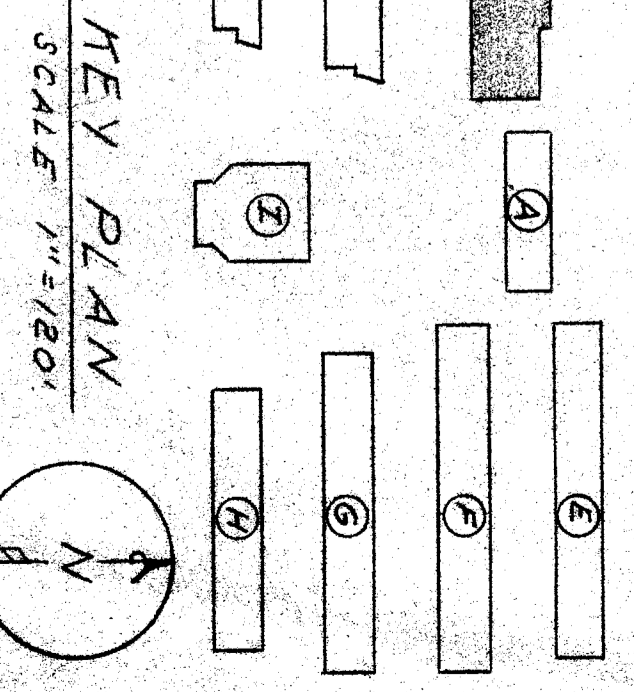
PLAN UNIT "B"
SCALE: 3/8"=1'-0"



FLOOR PLAN
OBSERVATION & MECH. EQUIP. RM.
SCALE: 3/8"=1'-0"



DETAIL C
SCALE: 3/8"=1'-0"



KEY PLAN
SCALE: 1"=120'

J. S. HAMEL
OFFICE OF SUPERINTENDENT OF SCHOOLS
APPROVED

STATE OF CALIFORNIA
DEPARTMENT OF PUBLIC WORKS
DIVISION OF ARCHITECTURE

STATE OF CALIFORNIA
DEPARTMENT OF PUBLIC WORKS
DIVISION OF ARCHITECTURE
NO. 11500
H. W. BAKER & COMPANY
ARCHITECTS
SAN FRANCISCO, CALIF.

BANKERSFIELD CITY SCHOOLS
1800 W. ST. BARKER, BELL, CALIF.
BOARD OF TRUSTEES

APPROVED
DATE Nov 5, 1953

EMERSON UNION HIGH SCHOOL
BANKERSFIELD CITY SCHOOL DISTRICT
FOURTH & P. STREETS
BANKERSFIELD, CALIFORNIA

ERNEST L. MCCOY A.I.A. ARCHITECT
PHONE 4881
CALIFORNIA

DATE 11/5/53
DRAWN H.E.S.
CHECKED H.L.T.
SHEET NO. H2 OF 7 SHEETS