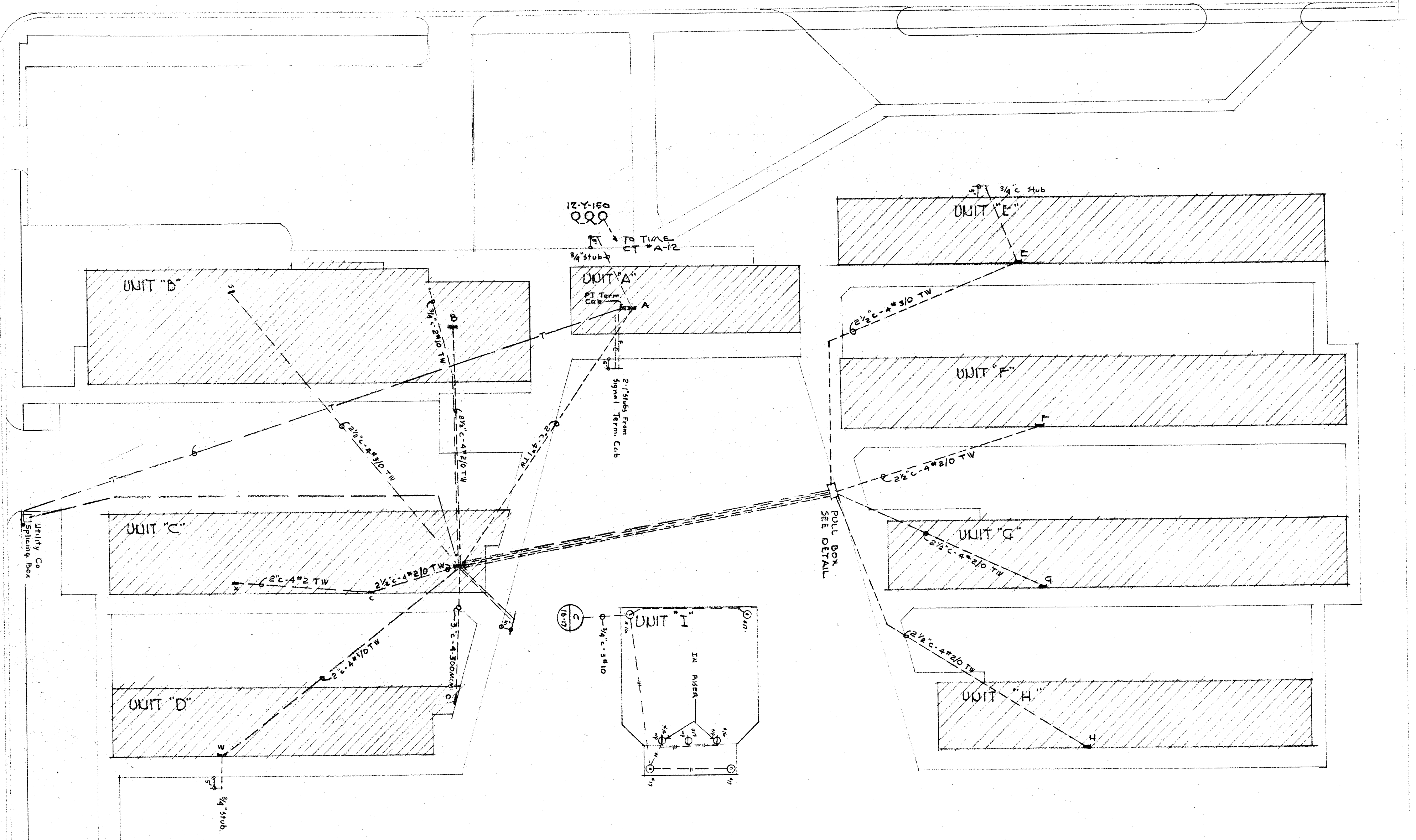
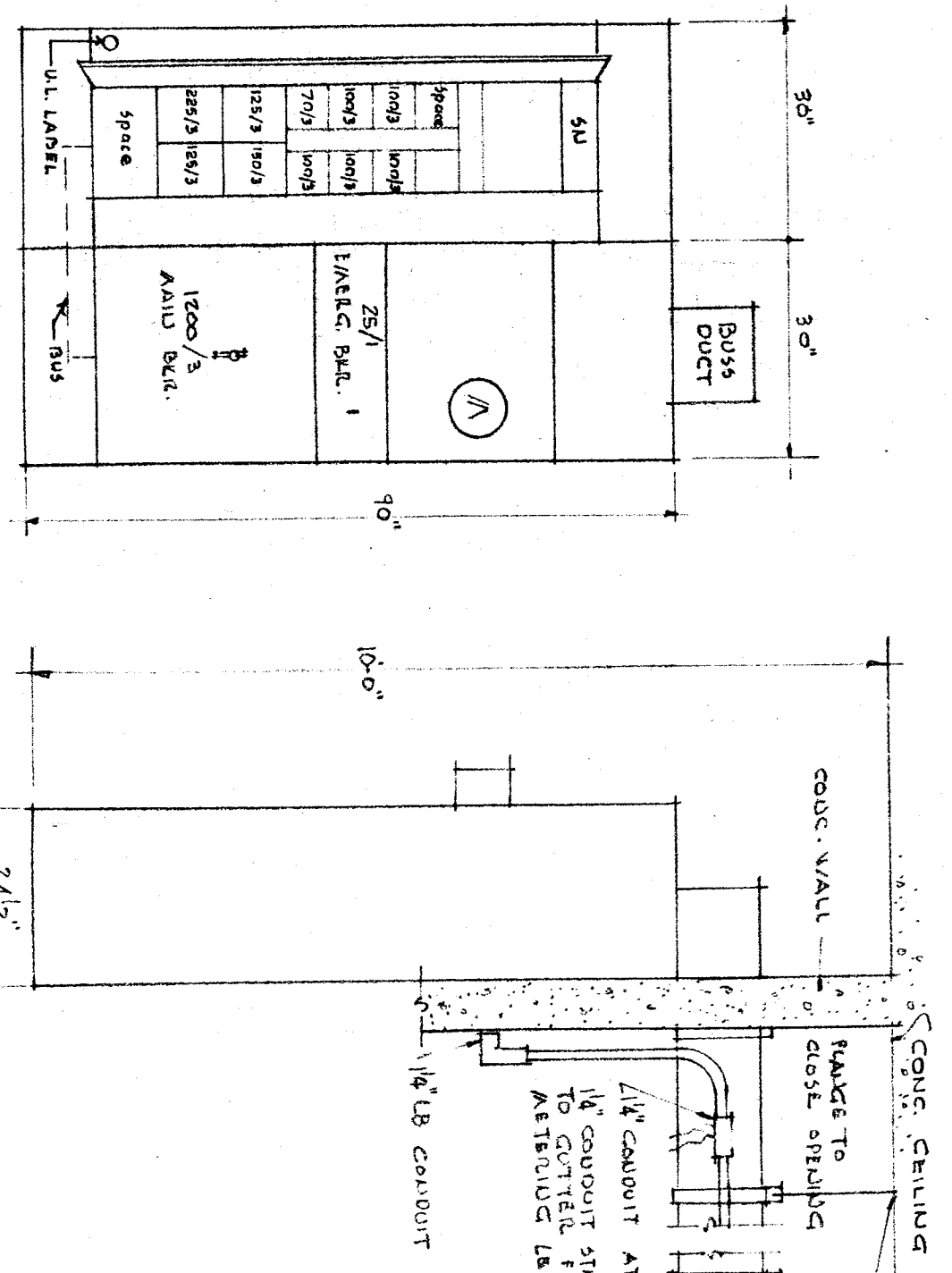


4TH STREET

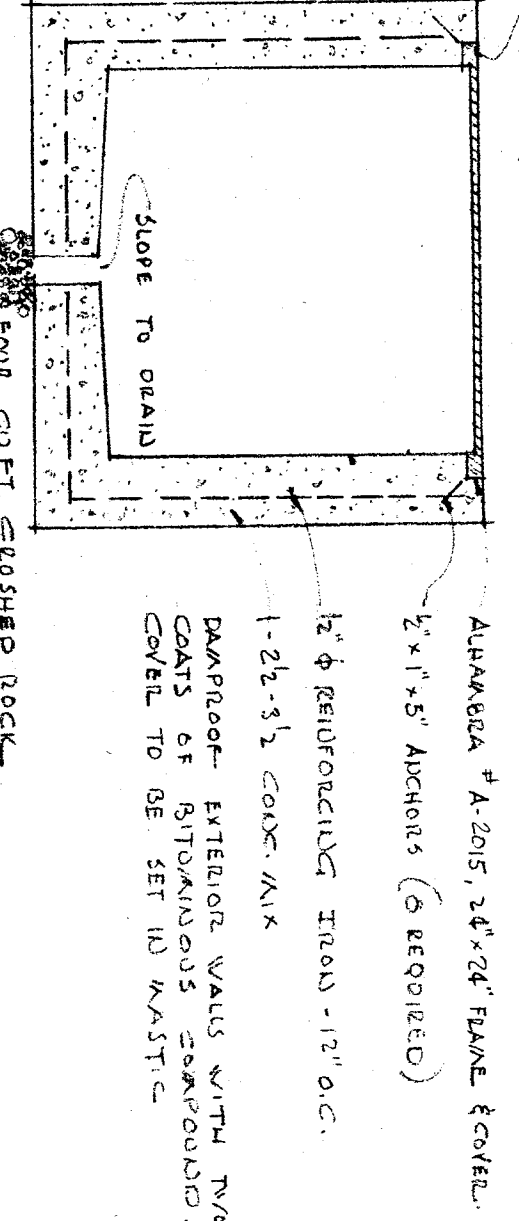
P STREET



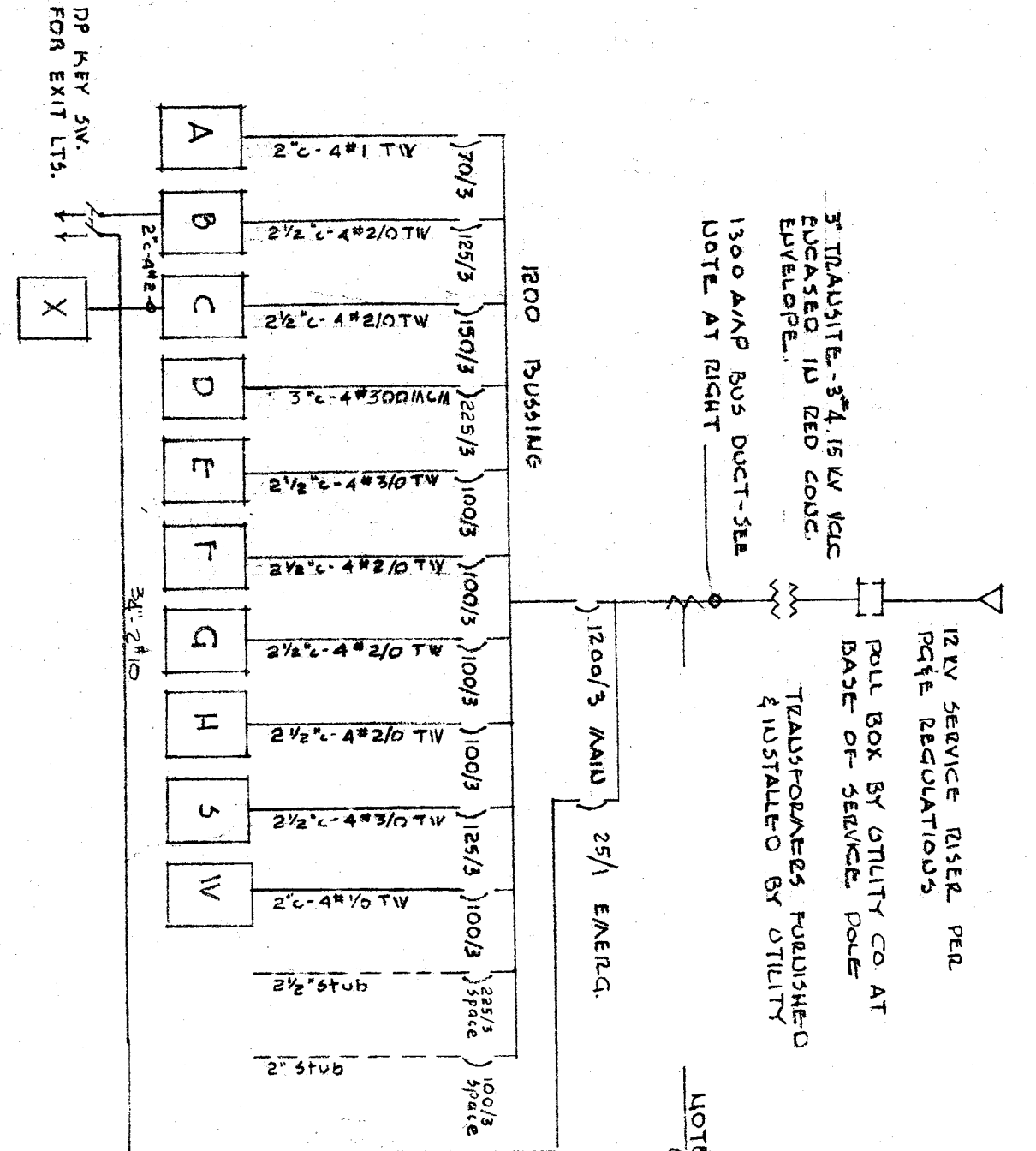
POU PLAN
SCALE 1"=30'-0"



MAIN SWITCHBOARD
SCALE 3/4"=1'-0"



MANHOLE DETAIL
SCALE 1"=1'-0"



RISE AND FEEDER SCHEDULE
NO SCALE

NOTE: 100 AMP BUS DUCT 2 1/2" x 3" BUS BARS FOR MAINS USED INSTALLED WITH 100 AMP BUS DUCT. ALL BUS DUCT SHALL BE MANUFACTURED BY THE SAME MANUFACTURER. BUS DUCT SHALL BE MANUFACTURED BY THE SAME MANUFACTURER. ALL BUS DUCT SHALL BE MANUFACTURED BY THE SAME MANUFACTURER. ALL BUS DUCT SHALL BE MANUFACTURED BY THE SAME MANUFACTURER.

ELECTRICAL SYMBOLS

- 1. 100 AMP BUS
- 2. 100 AMP BUS DUCT
- 3. 100 AMP BUS DUCT
- 4. 100 AMP BUS DUCT
- 5. 100 AMP BUS DUCT
- 6. 100 AMP BUS DUCT
- 7. 100 AMP BUS DUCT
- 8. 100 AMP BUS DUCT
- 9. 100 AMP BUS DUCT
- 10. 100 AMP BUS DUCT
- 11. 100 AMP BUS DUCT
- 12. 100 AMP BUS DUCT
- 13. 100 AMP BUS DUCT
- 14. 100 AMP BUS DUCT
- 15. 100 AMP BUS DUCT
- 16. 100 AMP BUS DUCT
- 17. 100 AMP BUS DUCT
- 18. 100 AMP BUS DUCT
- 19. 100 AMP BUS DUCT
- 20. 100 AMP BUS DUCT
- 21. 100 AMP BUS DUCT
- 22. 100 AMP BUS DUCT
- 23. 100 AMP BUS DUCT
- 24. 100 AMP BUS DUCT
- 25. 100 AMP BUS DUCT
- 26. 100 AMP BUS DUCT
- 27. 100 AMP BUS DUCT
- 28. 100 AMP BUS DUCT
- 29. 100 AMP BUS DUCT
- 30. 100 AMP BUS DUCT
- 31. 100 AMP BUS DUCT
- 32. 100 AMP BUS DUCT
- 33. 100 AMP BUS DUCT
- 34. 100 AMP BUS DUCT
- 35. 100 AMP BUS DUCT
- 36. 100 AMP BUS DUCT
- 37. 100 AMP BUS DUCT
- 38. 100 AMP BUS DUCT
- 39. 100 AMP BUS DUCT
- 40. 100 AMP BUS DUCT
- 41. 100 AMP BUS DUCT
- 42. 100 AMP BUS DUCT
- 43. 100 AMP BUS DUCT
- 44. 100 AMP BUS DUCT
- 45. 100 AMP BUS DUCT
- 46. 100 AMP BUS DUCT
- 47. 100 AMP BUS DUCT
- 48. 100 AMP BUS DUCT
- 49. 100 AMP BUS DUCT
- 50. 100 AMP BUS DUCT
- 51. 100 AMP BUS DUCT
- 52. 100 AMP BUS DUCT
- 53. 100 AMP BUS DUCT
- 54. 100 AMP BUS DUCT
- 55. 100 AMP BUS DUCT
- 56. 100 AMP BUS DUCT
- 57. 100 AMP BUS DUCT
- 58. 100 AMP BUS DUCT
- 59. 100 AMP BUS DUCT
- 60. 100 AMP BUS DUCT
- 61. 100 AMP BUS DUCT
- 62. 100 AMP BUS DUCT
- 63. 100 AMP BUS DUCT
- 64. 100 AMP BUS DUCT
- 65. 100 AMP BUS DUCT
- 66. 100 AMP BUS DUCT
- 67. 100 AMP BUS DUCT
- 68. 100 AMP BUS DUCT
- 69. 100 AMP BUS DUCT
- 70. 100 AMP BUS DUCT
- 71. 100 AMP BUS DUCT
- 72. 100 AMP BUS DUCT
- 73. 100 AMP BUS DUCT
- 74. 100 AMP BUS DUCT
- 75. 100 AMP BUS DUCT
- 76. 100 AMP BUS DUCT
- 77. 100 AMP BUS DUCT
- 78. 100 AMP BUS DUCT
- 79. 100 AMP BUS DUCT
- 80. 100 AMP BUS DUCT
- 81. 100 AMP BUS DUCT
- 82. 100 AMP BUS DUCT
- 83. 100 AMP BUS DUCT
- 84. 100 AMP BUS DUCT
- 85. 100 AMP BUS DUCT
- 86. 100 AMP BUS DUCT
- 87. 100 AMP BUS DUCT
- 88. 100 AMP BUS DUCT
- 89. 100 AMP BUS DUCT
- 90. 100 AMP BUS DUCT
- 91. 100 AMP BUS DUCT
- 92. 100 AMP BUS DUCT
- 93. 100 AMP BUS DUCT
- 94. 100 AMP BUS DUCT
- 95. 100 AMP BUS DUCT
- 96. 100 AMP BUS DUCT
- 97. 100 AMP BUS DUCT
- 98. 100 AMP BUS DUCT
- 99. 100 AMP BUS DUCT
- 100. 100 AMP BUS DUCT

CODE BOOKS AND SAFETY ORDERS
 ALL WORK AND MATERIALS SHALL BE IN FULL ACCORDANCE WITH THE LATEST EDITIONS OF THE NATIONAL FIRE PROTECTION ASSOCIATION (NFPA) CODES AND STANDARDS. THE NATIONAL ELECTRICAL CODE (NEC) SHALL BE USED AS THE BASIS FOR ALL ELECTRICAL WORK. THE NATIONAL ELECTRICAL CODE (NEC) SHALL BE USED AS THE BASIS FOR ALL ELECTRICAL WORK. THE NATIONAL ELECTRICAL CODE (NEC) SHALL BE USED AS THE BASIS FOR ALL ELECTRICAL WORK.

EDWARD LOWE
 ELECTRICAL ENGINEER
 1012 FULTON ST.
 FRESCO CALIFORNIA

OFFICE OF SUPERINTENDENT OF SCHOOLS
 APPROVED DATE

STATE OF CALIFORNIA
 DEPARTMENT OF PUBLIC WORKS
 DIVISION OF ARCHITECTURE

STATE OF CALIFORNIA - DEPARTMENT OF PUBLIC WORKS
 DIVISION OF ARCHITECTURE
 APPROVED NOV 4 - 1953
 11300

PAKEMFIELD CITY SCHOOLS
 1600 K ST PAKEMFIELD CAL
 BOARD OF EDUCATION

APPROVED DATE Nov 5, 1953
 PAKEMFIELD JUNIOR HIGH SCHOOL
 PAKEMFIELD CITY SCHOOLS DISTRICT
 PAKEMFIELD CALIFORNIA

ERNEST L. MCCOY A.T.A. ARCHITECT
 2011 N STREET
 BAKERSFIELD CALIFORNIA

CASE JOB No. E-2-16
 DATE 10-20-53
 CHECKED BY
 SHEET No. 1 OF 6