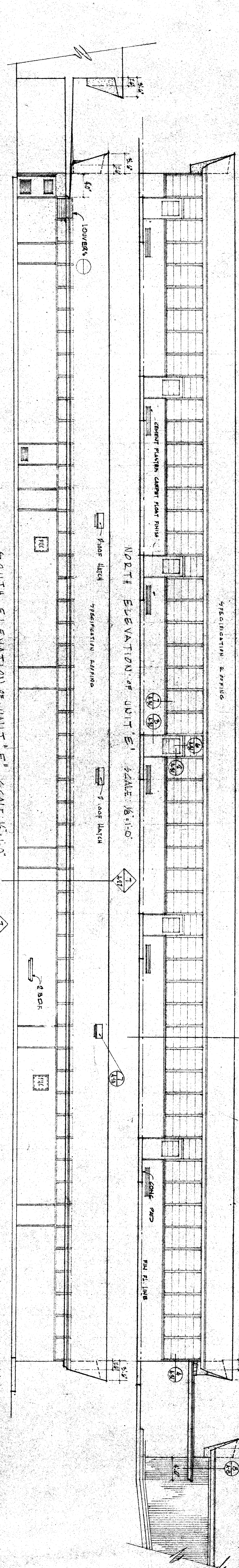
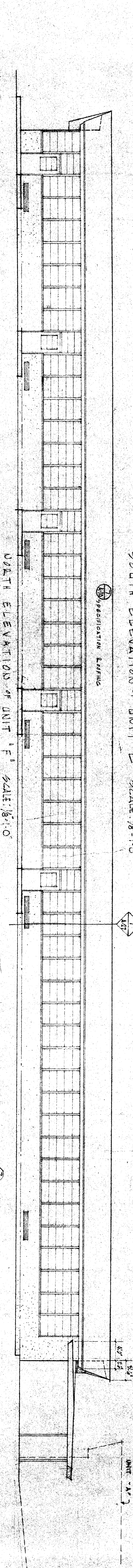


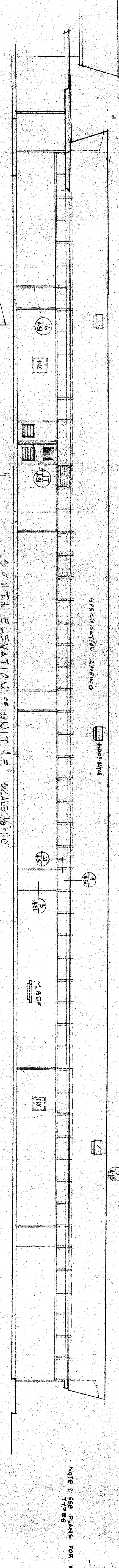
EAST ELEVATION OF UNITS 'E', 'F', 'G', AND 'H' SCALE 1/8"=1'-0"



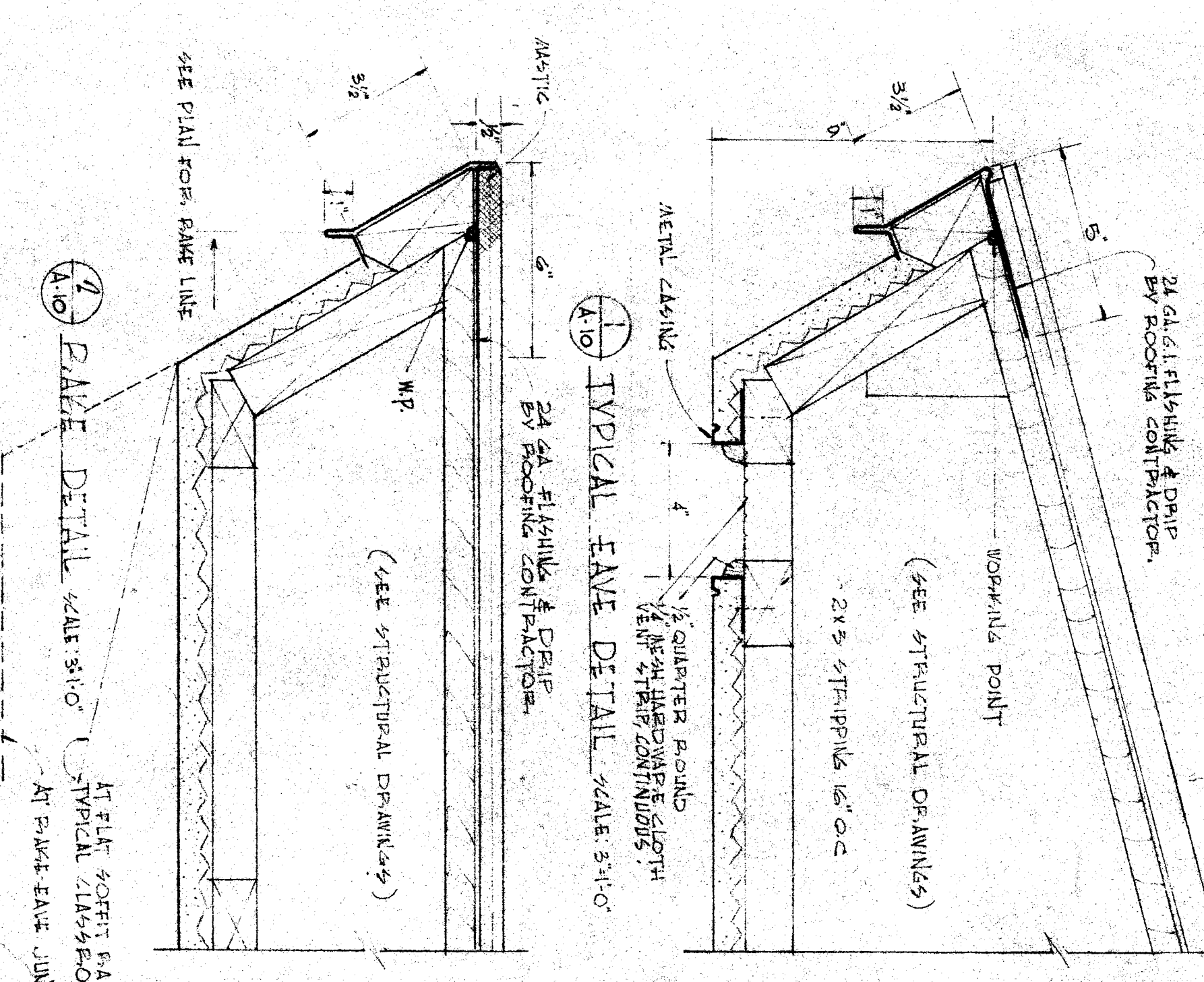
NORTH ELEVATION OF UNIT 'E' SCALE 1/8"=1'-0"



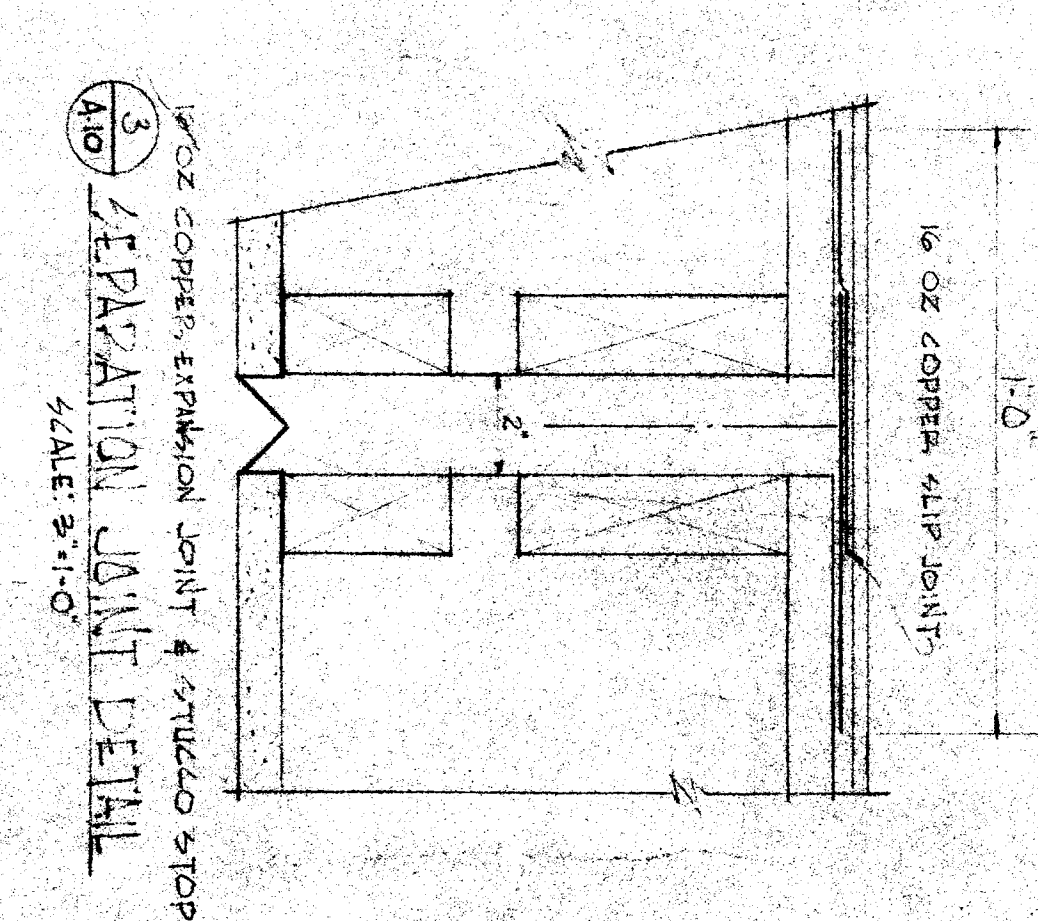
SOUTH ELEVATION OF UNIT 'E' SCALE 1/8"=1'-0"



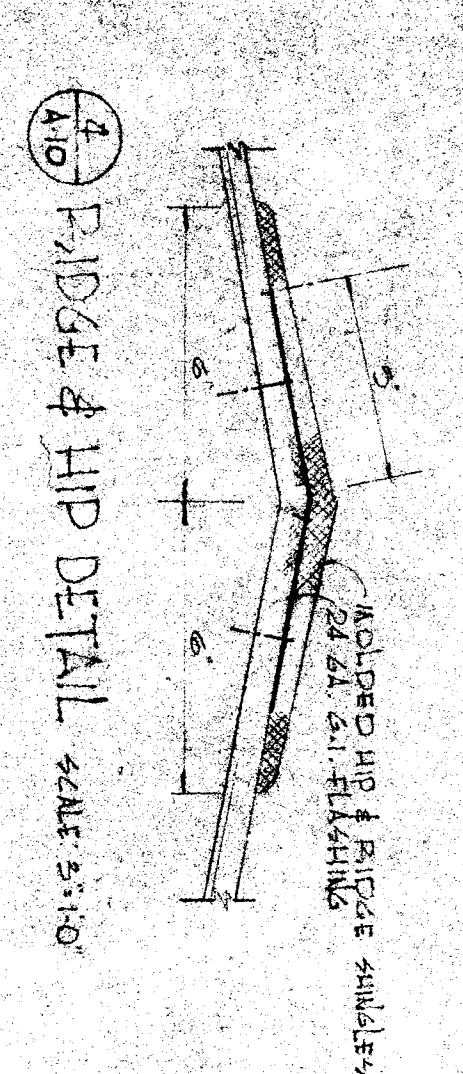
NORTH ELEVATION OF UNIT 'F' SCALE 1/8"=1'-0"



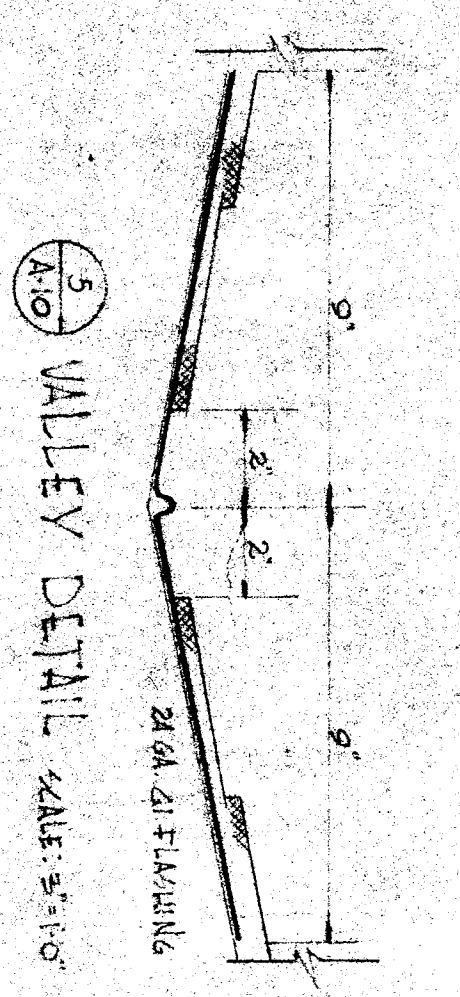
TYPICAL EAVE DETAIL SCALE 3/4"=1'-0"



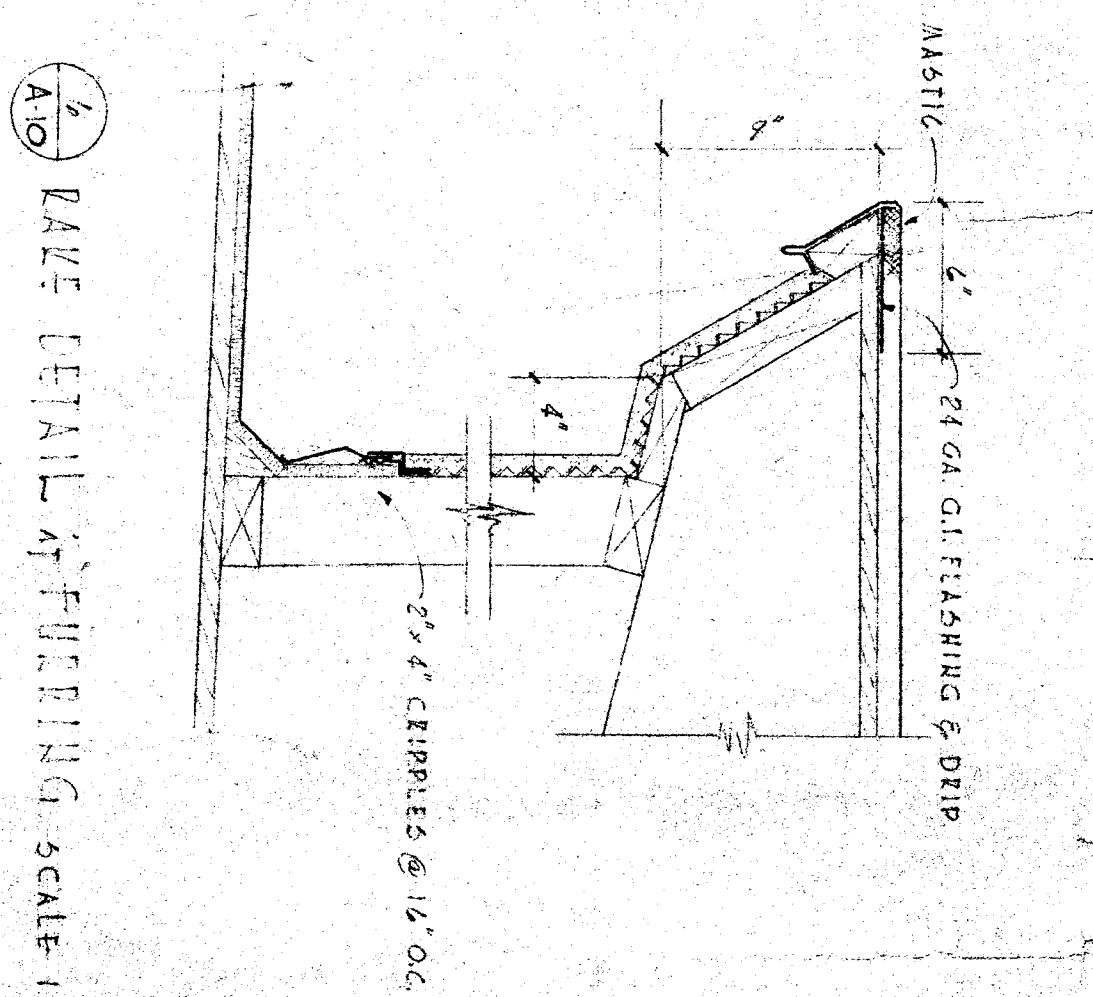
SEPARATION JOINT DETAIL SCALE 3/4"=1'-0"



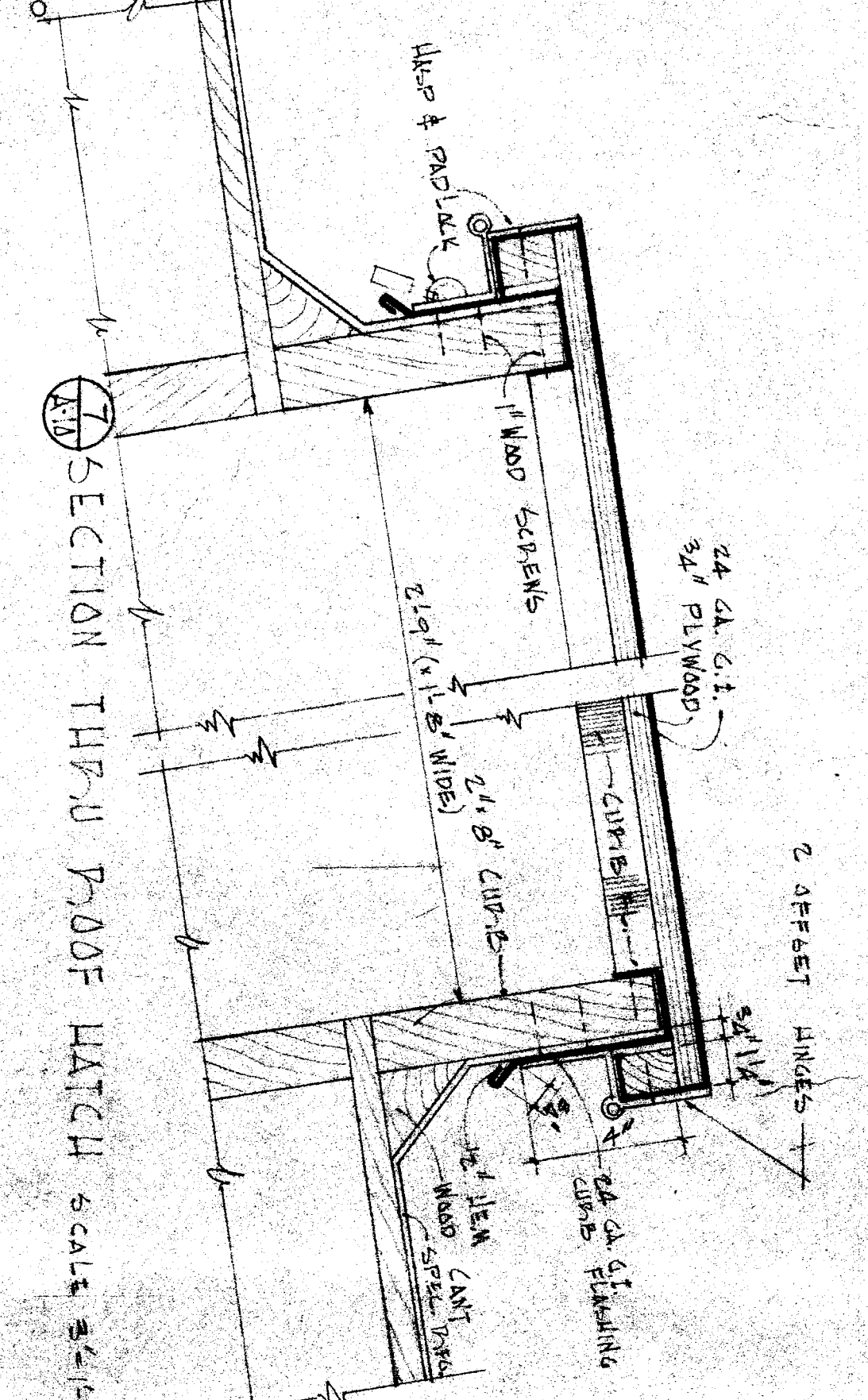
RIDGE & HIP DETAIL SCALE 3/4"=1'-0"



VALLEY DETAIL SCALE 3/4"=1'-0"



EAVE DETAIL FLASHING SCALE 1/2"=1'-0"



SECTION THROUGH ROOF HATCH SCALE 3/4"=1'-0"

NOTE: SEE PLANS FOR WINDOW TYPES

OFFICE OF SUPERINTENDENT OF SCHOOLS APPROVED: _____ DATE: _____	STATE OF CALIFORNIA DEPARTMENT OF PUBLIC WORKS DIVISION OF ARCHITECTURE APPROVED: _____ DATE: _____	STATE OF CALIFORNIA - DEPARTMENT OF PUBLIC WORKS DIVISION OF ARCHITECTURE APPROVED: _____ DATE: NOV 1 - 1933	CHECK AND VERIFY ALL DIMENSIONS AND CONDITIONS AT JOB SITE BEFORE PROCEEDING WITH THE WORK. REPORT ANY DISCREPANCIES TO THE ARCHITECT.	BAKERSFIELD CITY SCHOOLS 1600 N. ST. BAKERSFIELD, CALIF. BOARD OF EDUCATION	EVERSON JUNIOR HIGH SCHOOL BAKERSFIELD CITY SCHOOLS DISTRICT FOURTH AND 'P' STREETS BAKERSFIELD CALIFORNIA	ARCHITECT FENEST L. MCCOY A.I.A. BAKERSFIELD CALIFORNIA	DATE: 11-2 JOB NO. 2516 DRAWN: _____ CHECKED: _____
---	---	---	--	---	---	---	--