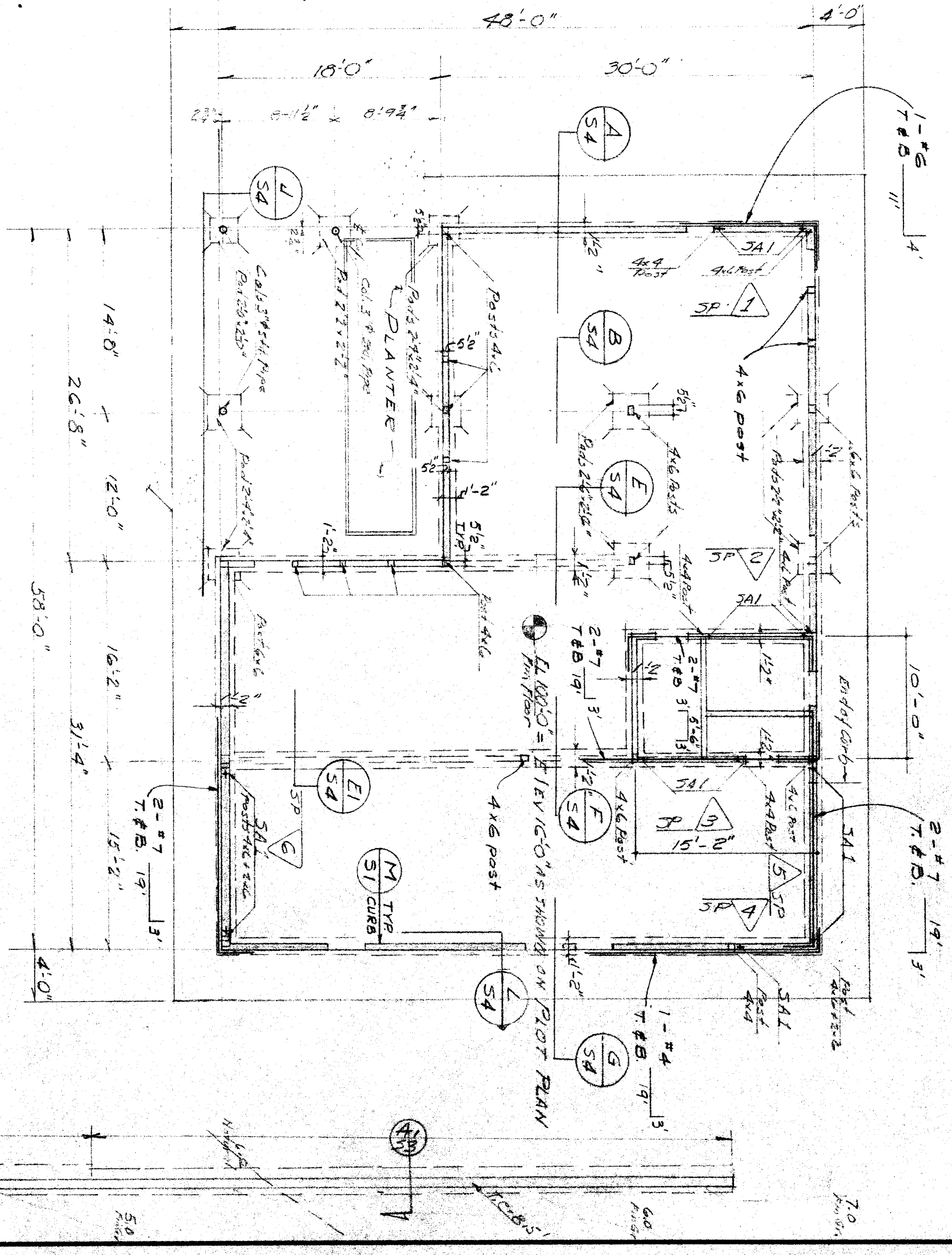
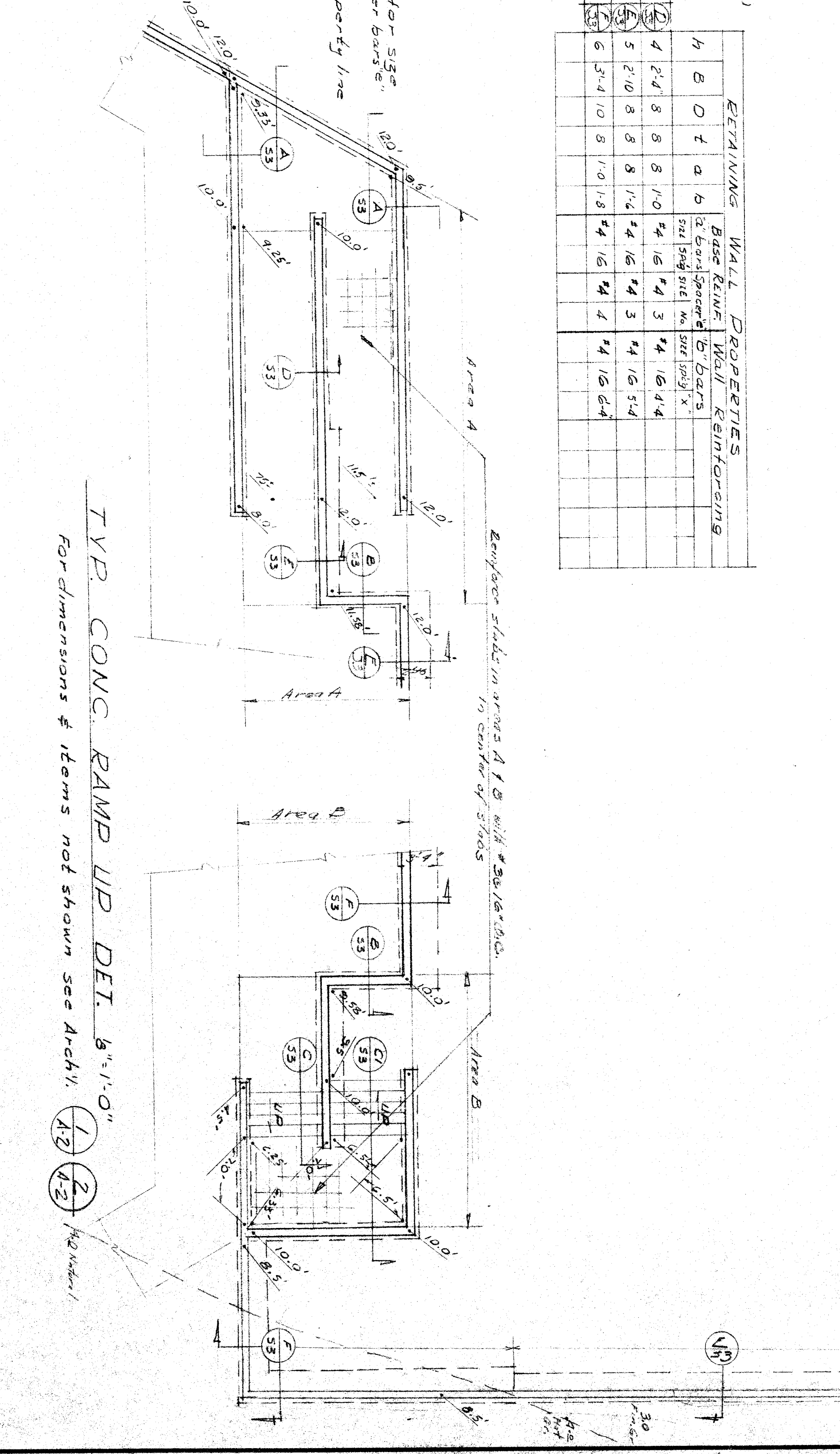
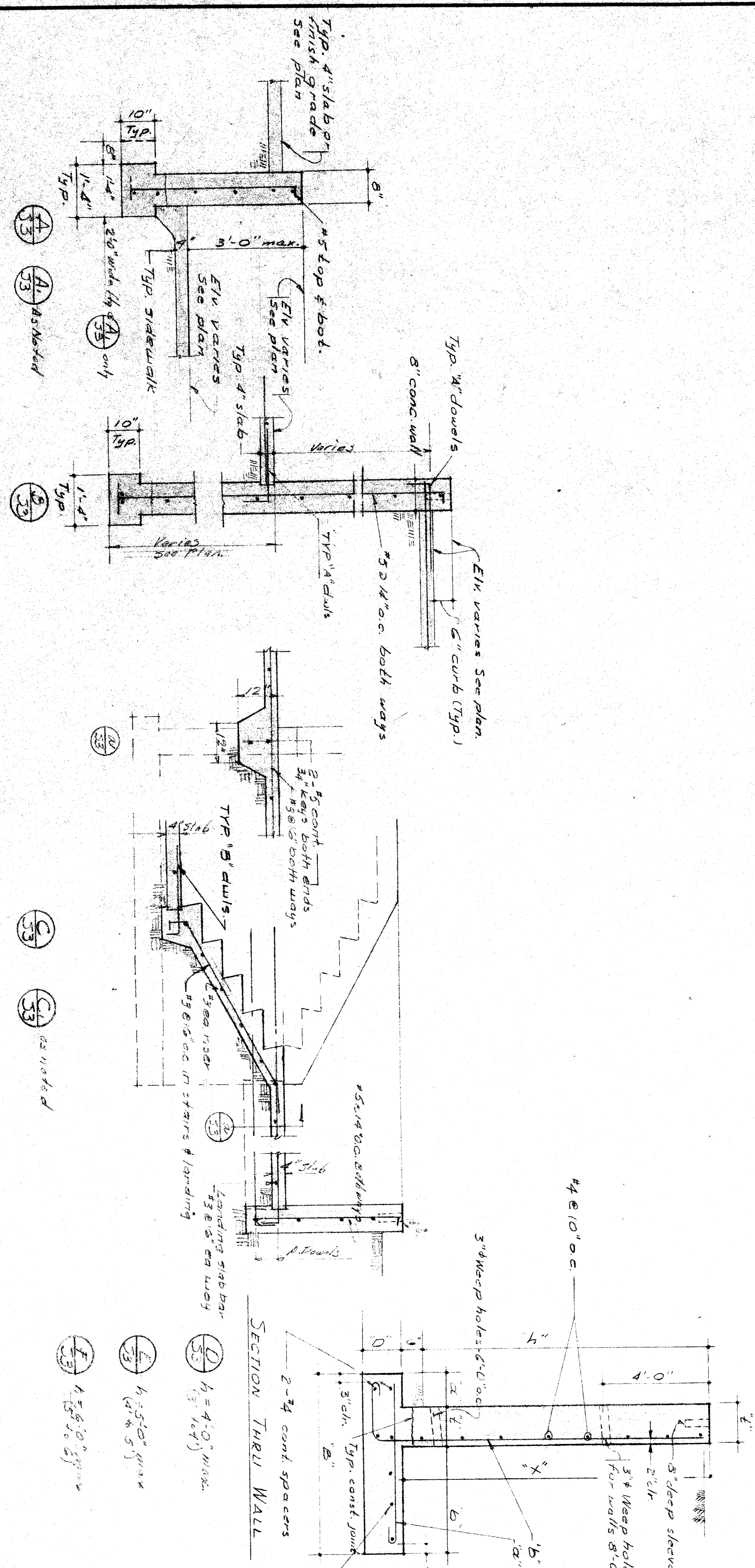


TUNNEL DETAILS UNIT 'C' 12'-11.0"



REINFORCING WALL PROPERTIES

WALL NO.	THICKNESS	REINFORCEMENT	AREA
1	8"	4 #4 @ 12" o.c.	0.32
2	8"	4 #4 @ 12" o.c.	0.32
3	8"	4 #4 @ 12" o.c.	0.32
4	8"	4 #4 @ 12" o.c.	0.32
5	8"	4 #4 @ 12" o.c.	0.32
6	8"	4 #4 @ 12" o.c.	0.32
7	8"	4 #4 @ 12" o.c.	0.32
8	8"	4 #4 @ 12" o.c.	0.32
9	8"	4 #4 @ 12" o.c.	0.32
10	8"	4 #4 @ 12" o.c.	0.32
11	8"	4 #4 @ 12" o.c.	0.32
12	8"	4 #4 @ 12" o.c.	0.32
13	8"	4 #4 @ 12" o.c.	0.32
14	8"	4 #4 @ 12" o.c.	0.32
15	8"	4 #4 @ 12" o.c.	0.32
16	8"	4 #4 @ 12" o.c.	0.32
17	8"	4 #4 @ 12" o.c.	0.32
18	8"	4 #4 @ 12" o.c.	0.32
19	8"	4 #4 @ 12" o.c.	0.32
20	8"	4 #4 @ 12" o.c.	0.32



CHECK AND VERIFY ALL DIMENSIONS AND CONDITIONS AT JOB SITE BEFORE PROCEEDING WITH THE WORK.
 REPORT ANY DISCREPANCIES TO THE ARCHITECT.
 DRAWN: [Signature]
 CHECKED: [Signature]
 APPROVED - DATE: [Signature]
 HILLMAN & NOWELL
 STRUCTURAL ENGINEERS
 2811 N. STREET
 BAKERSFIELD
 ERNEST L. MCGOY AIA ARCHITECT
 2811 N. STREET
 BAKERSFIELD
 HENRY ESSLER ELEMENTARY SCHOOL
 BAKERSFIELD CITY SCHOOL DISTRICT
 CALIF.