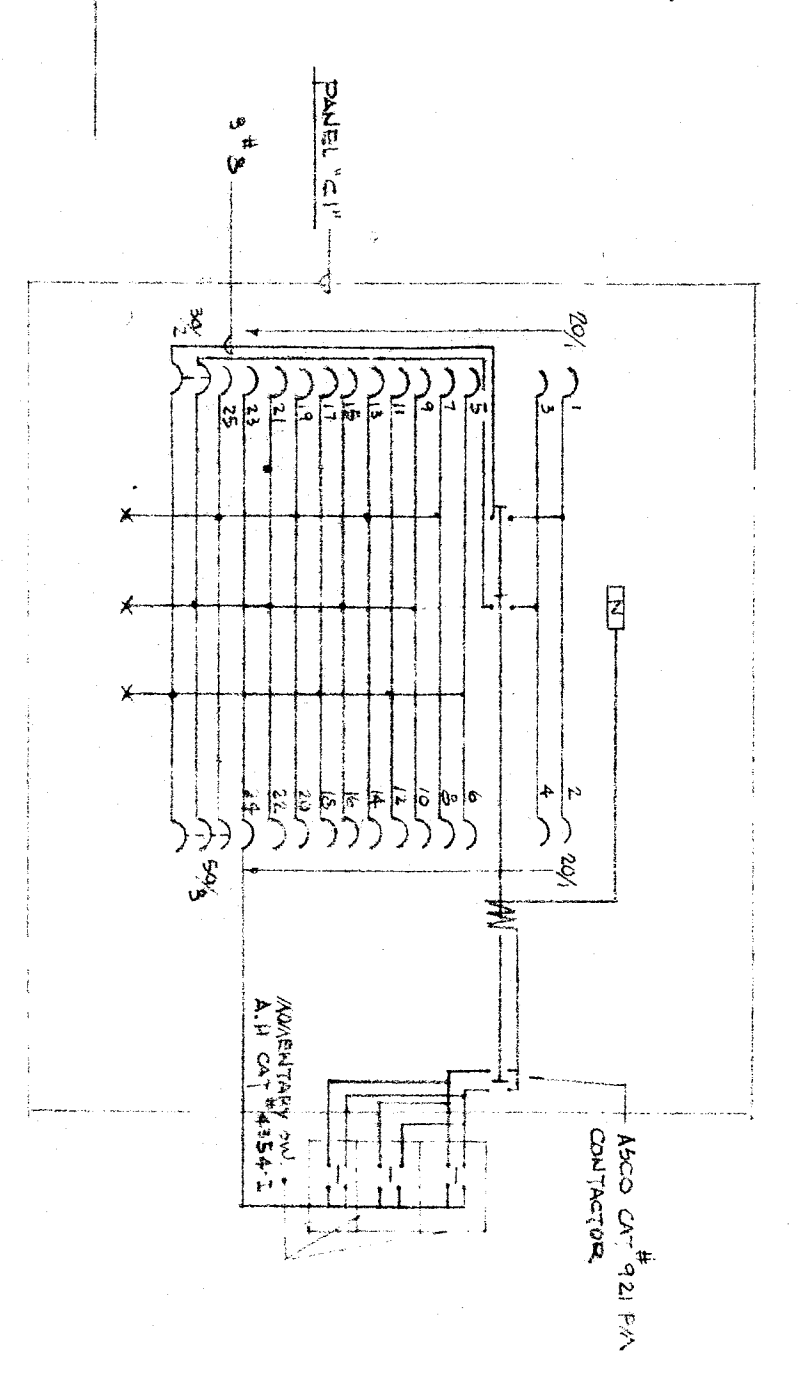
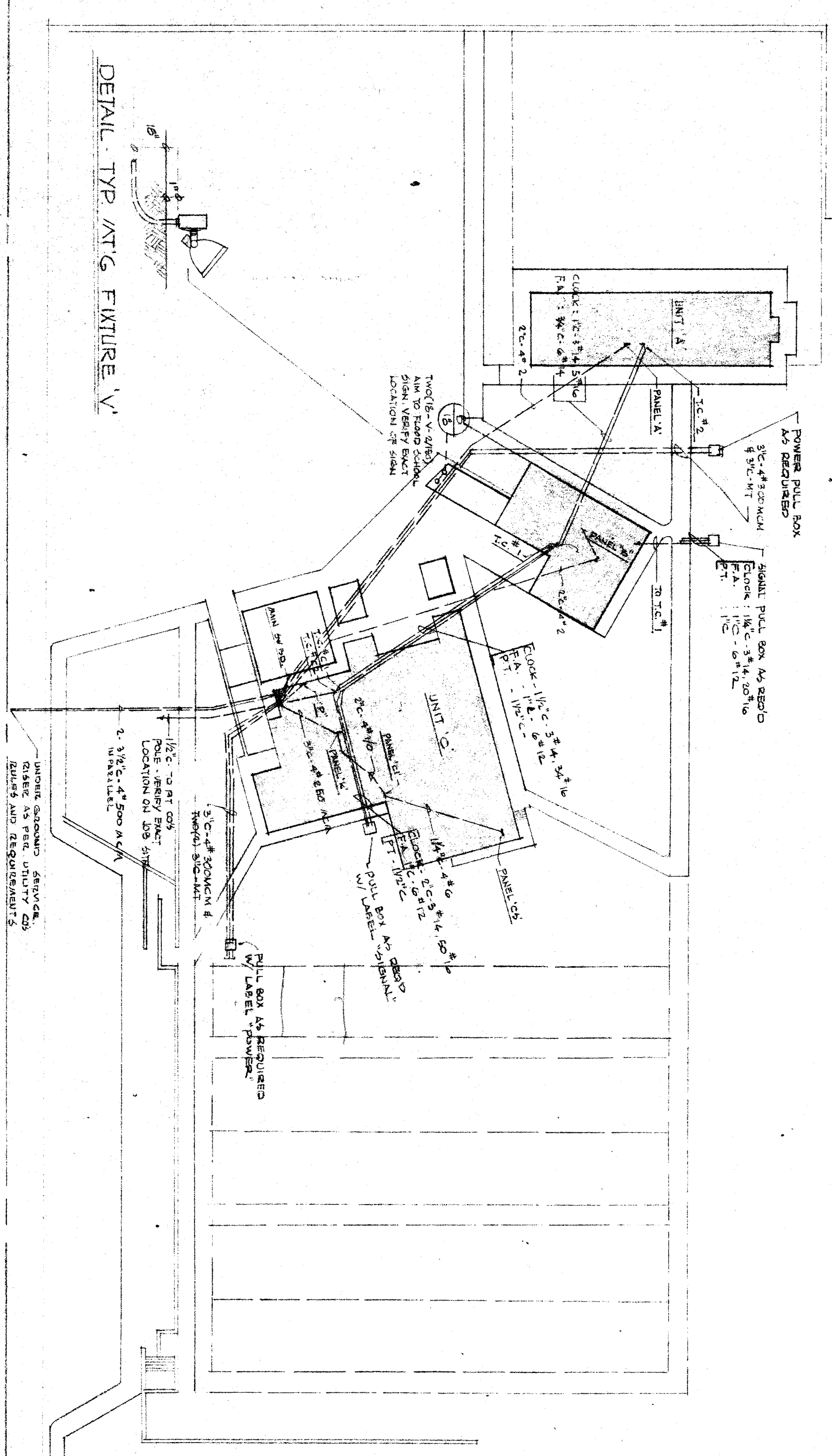
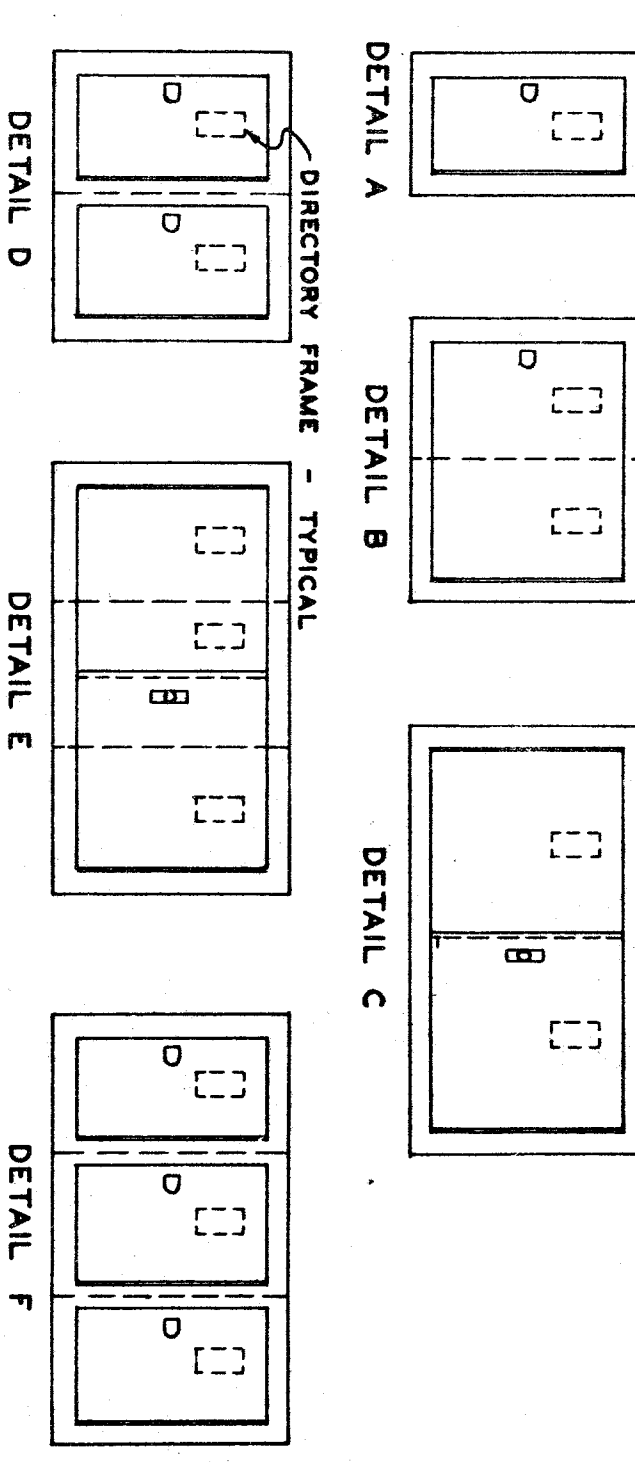


P L O T P L A N  
SCALE: 1" = 4'-0"



TERMINAL CABINETS



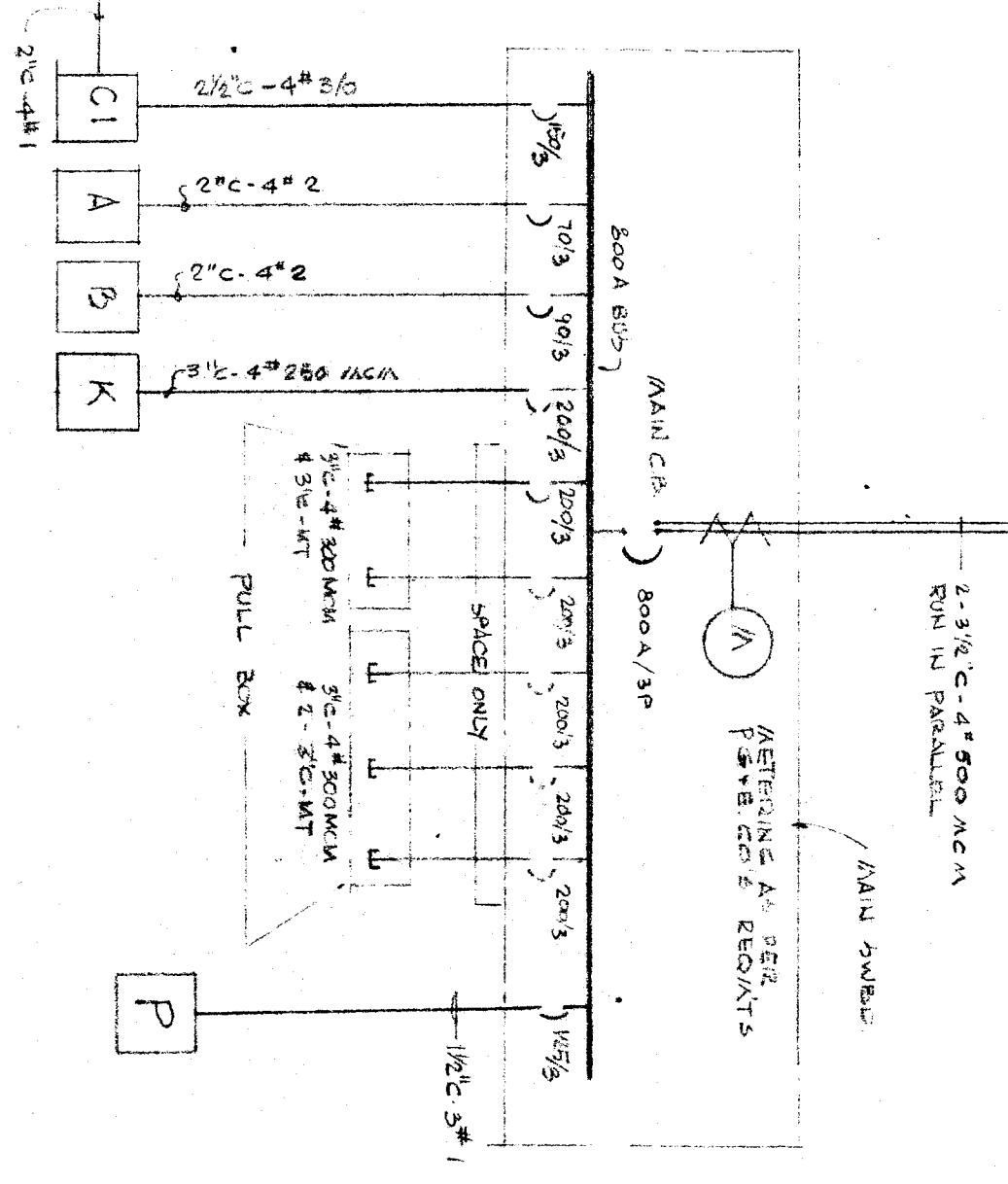
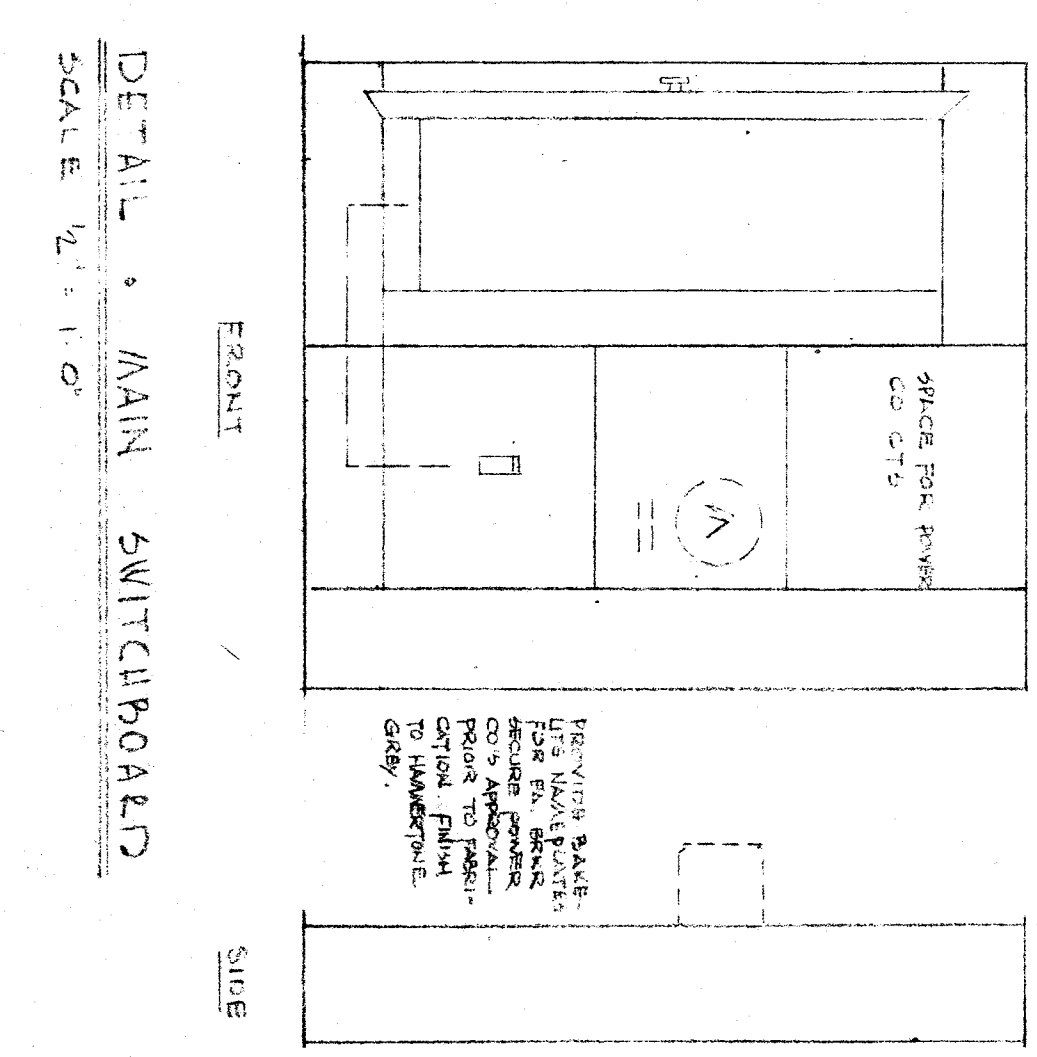
**SCHEDULE:**

ITEM NO.	TERMINAL CABINET	QTY	FINISH
1	TERMINAL CABINET - 48" WIDE	1	PAINT
2	TERMINAL CABINET - 36" WIDE	1	PAINT
3	TERMINAL CABINET - 24" WIDE	1	PAINT
4	TERMINAL CABINET - 18" WIDE	1	PAINT
5	TERMINAL CABINET - 12" WIDE	1	PAINT
6	TERMINAL CABINET - 8" WIDE	1	PAINT

**NOTES:**  
 1. TO BE CONSTRUCTED OF COKE CAUSE STEEL.  
 2. FRONT TO BE CONSTRUCTED OF COKE CAUSE STEEL. EACH DOOR TO HAVE DIRECTORY FRAME CATCH (A LOCK).  
 3. CONSTRUCTION SHALL BE IN ACCORDANCE WITH UNDERWRITERS LABORATORIES, INC. REQUIREMENTS & BEAR THEIR APPROVAL.

**PANEL "P" SCHEDULE**

NO.	DESCRIPTION	QTY	FINISH
1	24" x 36" x 18" PANEL	1	PAINT
2	36" x 48" x 18" PANEL	1	PAINT
3	48" x 60" x 18" PANEL	1	PAINT
4	60" x 72" x 18" PANEL	1	PAINT
5	72" x 84" x 18" PANEL	1	PAINT
6	84" x 96" x 18" PANEL	1	PAINT
7	96" x 108" x 18" PANEL	1	PAINT
8	108" x 120" x 18" PANEL	1	PAINT
9	120" x 132" x 18" PANEL	1	PAINT
10	132" x 144" x 18" PANEL	1	PAINT
11	144" x 156" x 18" PANEL	1	PAINT
12	156" x 168" x 18" PANEL	1	PAINT
13	168" x 180" x 18" PANEL	1	PAINT
14	180" x 192" x 18" PANEL	1	PAINT
15	192" x 204" x 18" PANEL	1	PAINT
16	204" x 216" x 18" PANEL	1	PAINT
17	216" x 228" x 18" PANEL	1	PAINT
18	228" x 240" x 18" PANEL	1	PAINT
19	240" x 252" x 18" PANEL	1	PAINT
20	252" x 264" x 18" PANEL	1	PAINT
21	264" x 276" x 18" PANEL	1	PAINT
22	276" x 288" x 18" PANEL	1	PAINT
23	288" x 300" x 18" PANEL	1	PAINT
24	300" x 312" x 18" PANEL	1	PAINT
25	312" x 324" x 18" PANEL	1	PAINT
26	324" x 336" x 18" PANEL	1	PAINT
27	336" x 348" x 18" PANEL	1	PAINT
28	348" x 360" x 18" PANEL	1	PAINT
29	360" x 372" x 18" PANEL	1	PAINT
30	372" x 384" x 18" PANEL	1	PAINT
31	384" x 396" x 18" PANEL	1	PAINT
32	396" x 408" x 18" PANEL	1	PAINT
33	408" x 420" x 18" PANEL	1	PAINT
34	420" x 432" x 18" PANEL	1	PAINT
35	432" x 444" x 18" PANEL	1	PAINT
36	444" x 456" x 18" PANEL	1	PAINT
37	456" x 468" x 18" PANEL	1	PAINT
38	468" x 480" x 18" PANEL	1	PAINT
39	480" x 492" x 18" PANEL	1	PAINT
40	492" x 504" x 18" PANEL	1	PAINT
41	504" x 516" x 18" PANEL	1	PAINT
42	516" x 528" x 18" PANEL	1	PAINT
43	528" x 540" x 18" PANEL	1	PAINT
44	540" x 552" x 18" PANEL	1	PAINT
45	552" x 564" x 18" PANEL	1	PAINT
46	564" x 576" x 18" PANEL	1	PAINT
47	576" x 588" x 18" PANEL	1	PAINT
48	588" x 600" x 18" PANEL	1	PAINT
49	600" x 612" x 18" PANEL	1	PAINT
50	612" x 624" x 18" PANEL	1	PAINT
51	624" x 636" x 18" PANEL	1	PAINT
52	636" x 648" x 18" PANEL	1	PAINT
53	648" x 660" x 18" PANEL	1	PAINT
54	660" x 672" x 18" PANEL	1	PAINT
55	672" x 684" x 18" PANEL	1	PAINT
56	684" x 696" x 18" PANEL	1	PAINT
57	696" x 708" x 18" PANEL	1	PAINT
58	708" x 720" x 18" PANEL	1	PAINT
59	720" x 732" x 18" PANEL	1	PAINT
60	732" x 744" x 18" PANEL	1	PAINT
61	744" x 756" x 18" PANEL	1	PAINT
62	756" x 768" x 18" PANEL	1	PAINT
63	768" x 780" x 18" PANEL	1	PAINT
64	780" x 792" x 18" PANEL	1	PAINT
65	792" x 804" x 18" PANEL	1	PAINT
66	804" x 816" x 18" PANEL	1	PAINT
67	816" x 828" x 18" PANEL	1	PAINT
68	828" x 840" x 18" PANEL	1	PAINT
69	840" x 852" x 18" PANEL	1	PAINT
70	852" x 864" x 18" PANEL	1	PAINT
71	864" x 876" x 18" PANEL	1	PAINT
72	876" x 888" x 18" PANEL	1	PAINT
73	888" x 900" x 18" PANEL	1	PAINT
74	900" x 912" x 18" PANEL	1	PAINT
75	912" x 924" x 18" PANEL	1	PAINT
76	924" x 936" x 18" PANEL	1	PAINT
77	936" x 948" x 18" PANEL	1	PAINT
78	948" x 960" x 18" PANEL	1	PAINT
79	960" x 972" x 18" PANEL	1	PAINT
80	972" x 984" x 18" PANEL	1	PAINT
81	984" x 996" x 18" PANEL	1	PAINT
82	996" x 1008" x 18" PANEL	1	PAINT
83	1008" x 1020" x 18" PANEL	1	PAINT
84	1020" x 1032" x 18" PANEL	1	PAINT
85	1032" x 1044" x 18" PANEL	1	PAINT
86	1044" x 1056" x 18" PANEL	1	PAINT
87	1056" x 1068" x 18" PANEL	1	PAINT
88	1068" x 1080" x 18" PANEL	1	PAINT
89	1080" x 1092" x 18" PANEL	1	PAINT
90	1092" x 1104" x 18" PANEL	1	PAINT
91	1104" x 1116" x 18" PANEL	1	PAINT
92	1116" x 1128" x 18" PANEL	1	PAINT
93	1128" x 1140" x 18" PANEL	1	PAINT
94	1140" x 1152" x 18" PANEL	1	PAINT
95	1152" x 1164" x 18" PANEL	1	PAINT
96	1164" x 1176" x 18" PANEL	1	PAINT
97	1176" x 1188" x 18" PANEL	1	PAINT
98	1188" x 1200" x 18" PANEL	1	PAINT
99	1200" x 1212" x 18" PANEL	1	PAINT
100	1212" x 1224" x 18" PANEL	1	PAINT



**FIXTURE SCHEDULE**

TYPE	DESCRIPTION	LAMPS	WTG.
a	SUBSTAN. CH. 20" x 24" x 18" 480V X-1	4/40W	FLUSH
b	RECESSED CH. 10" x 10" x 18"	150W	FLUSH
c	SOUL. AIR CH. 10" x 10" x 18"	1/150W	CEILING
d	RECESSED CH. 10" x 10" x 18"	150W	CEILING
e	RECESSED CH. 10" x 10" x 18"	150W	CEILING
f	RECESSED CH. 10" x 10" x 18"	150W	FLUSH
g	RECESSED CH. 10" x 10" x 18"	150W	CEILING
h	RECESSED CH. 10" x 10" x 18"	150W	CEILING
i	RECESSED CH. 10" x 10" x 18"	150W	CEILING
j	RECESSED CH. 10" x 10" x 18"	150W	CEILING
k	RECESSED CH. 10" x 10" x 18"	150W	CEILING
l	RECESSED CH. 10" x 10" x 18"	150W	CEILING
m	RECESSED CH. 10" x 10" x 18"	150W	CEILING
n	RECESSED CH. 10" x 10" x 18"	150W	CEILING
o	RECESSED CH. 10" x 10" x 18"	150W	CEILING
p	RECESSED CH. 10" x 10" x 18"	150W	CEILING
q	RECESSED CH. 10" x 10" x 18"	150W	CEILING
r	RECESSED CH. 10" x 10" x 18"	150W	CEILING
s	RECESSED CH. 10" x 10" x 18"	150W	CEILING
t	RECESSED CH. 10" x 10" x 18"	150W	CEILING
v	RECESSED CH. 10" x 10" x 18"	150W	CEILING

**ELECTRICAL SYMBOLS**

- ⊕ Home Run Minimum 1/2" conduit
- ⊖ Distribution Panel
- ⊗ Terminal Cabinet
- ⊘ Junction Box
- ⊙ Ceiling Outlet
- ⊖ Wall Bracket Outlet
- ⊖ Recessed Unit
- ⊖ Duplex Convenience Outlet
- ⊖ Weatherproof Outlet
- ⊖ Floor Outlet - National 90°
- ⊖ Motor Outlet and Disconnect Switch
- ⊖ Clock Outlet
- ⊖ Public Telephone Outlet
- ⊖ P.A. Speaker Outlet
- ⊖ Air-Conditioner Outlet
- ⊖ Intercom Outlet
- ⊖ Thermostat
- ⊖ 3-Way Switch
- ⊖ Key Operated Switch
- ⊖ Switch With Pilot Light
- ⊖ Thermal Overload Switch
- ⊖ Special Outlet
- ⊖ Electric Circuit Number
- ⊖ Electric Circuit Type
- ⊖ Electric Valve
- ⊖ Conduit Run in Floor
- ⊖ Conduit Run in Ceiling
- ⊖ Fire Alarm Station
- ⊖ Fire Alarm Hoop
- ⊖ Prossman Bell
- ⊖ Dark Glow Outlet - No. 100
- ⊖ Perceval Socket - Perceval
- ⊖ Two Pole Switch
- ⊖ 4-Way Switch
- ⊖ Stop Push Button Switch
- ⊖ Stop Push Button Switch

**REQUIREMENTS FOR LIGHTING FIXTURES**  
 IF THE SPECIFIC VOLTAGE IS NOT STATED IN THE SCHEDULE, THE VOLTAGE SHALL BE AS SHOWN IN THE SCHEDULE. IF THE VOLTAGE IS NOT STATED IN THE SCHEDULE, THE VOLTAGE SHALL BE AS SHOWN IN THE SCHEDULE. IF THE VOLTAGE IS NOT STATED IN THE SCHEDULE, THE VOLTAGE SHALL BE AS SHOWN IN THE SCHEDULE.

**GENERAL NOTES**  
 1. VERIFY EXISTING LOCATION OF ALL ELECTRICAL EQUIPMENT.  
 2. VERIFY EXISTING LOCATION OF ALL ELECTRICAL EQUIPMENT.  
 3. VERIFY EXISTING LOCATION OF ALL ELECTRICAL EQUIPMENT.

**CODE RULES AND REGULATIONS**  
 THE LATEST EDITION OF THE NATIONAL ELECTRICAL CODE SHALL BE IN FULL ACCORDANCE WITH THE LATEST EDITION OF THE NATIONAL ELECTRICAL CODE. THE LATEST EDITION OF THE NATIONAL ELECTRICAL CODE SHALL BE IN FULL ACCORDANCE WITH THE LATEST EDITION OF THE NATIONAL ELECTRICAL CODE.

CHECK AND VERIFY ALL DIMENSIONS AND CONDITIONS AT JOB SITE BEFORE PROCEEDING WITH THE WORK. REPORT ANY DISCREPANCIES TO THE ARCHITECT. DRAWN BY: *Edward L. Mc Coy*  
 REVISIONS: AS BUILT, APPROVED UNDER STATUTES OF CALIFORNIA. DATE: OCT 8 - 1954.  
 STATE OF CALIFORNIA, STATE FIRE MARSHAL. APPROVED: *Ernest L. McCoy*.  
 CHECKED BY: *Edward L. Mc Coy*.  
 APPROVED DATE: *Ernest L. McCoy*.  
**EDWARD L. MCGOY AIA, ARCHITECT**  
 2205 TULARE ST., PASADENA, CALIFORNIA 91107. PHONE 324-8111.  
**ERNEST L. MCGOY AIA, ARCHITECT**  
 2811 N. STREET, BAKERSFIELD, CALIFORNIA 93303.

SECTION 14 SCHOOL  
 HENRY EISELER ELEM. SCHOOL  
 CALIFORNIA

SHEET NO. 15-17  
 OF 3 SHEETS  
**E-1**