

Bakersfield
5200 Pring Avenue, Suite 400, Bakersfield, CA 93309
651.826.4300 fax 651.826.4311

San Jose
150 South First Street, Suite 200
San Jose, California 95113
408.924.0844 fax 408.924.0844

San Luis Obispo
4113 Wood Street, Suite 3-6
San Luis Obispo, CA 93401
805.546.0504

Oakland
250 Grove Street, Room 300
Oakland, California 94612
510.881.0870 fax 510.881.0874

Principal Architects
David A. Conrad, AIA, C-4664
Mark A. Johnson, AIA, C-3332
Robert T. Smith, AIA, C-4702
John A. Johnson, AIA, C-1810
C-10340
C-18078

MDC
MECHANICAL DESIGN CONCERNS
5500 Main Ave., Suite 251
Bakersfield, CA 93309
Phone: (661) 397-2116
Fax: (661) 397-2116
Personnel: 5-24-07

REV. NO.	REV. DATE	REVISION
△		
△		
△		
△	6-1-07	OWNER REVISION

PROJECT TRACKING NO. 63321-10

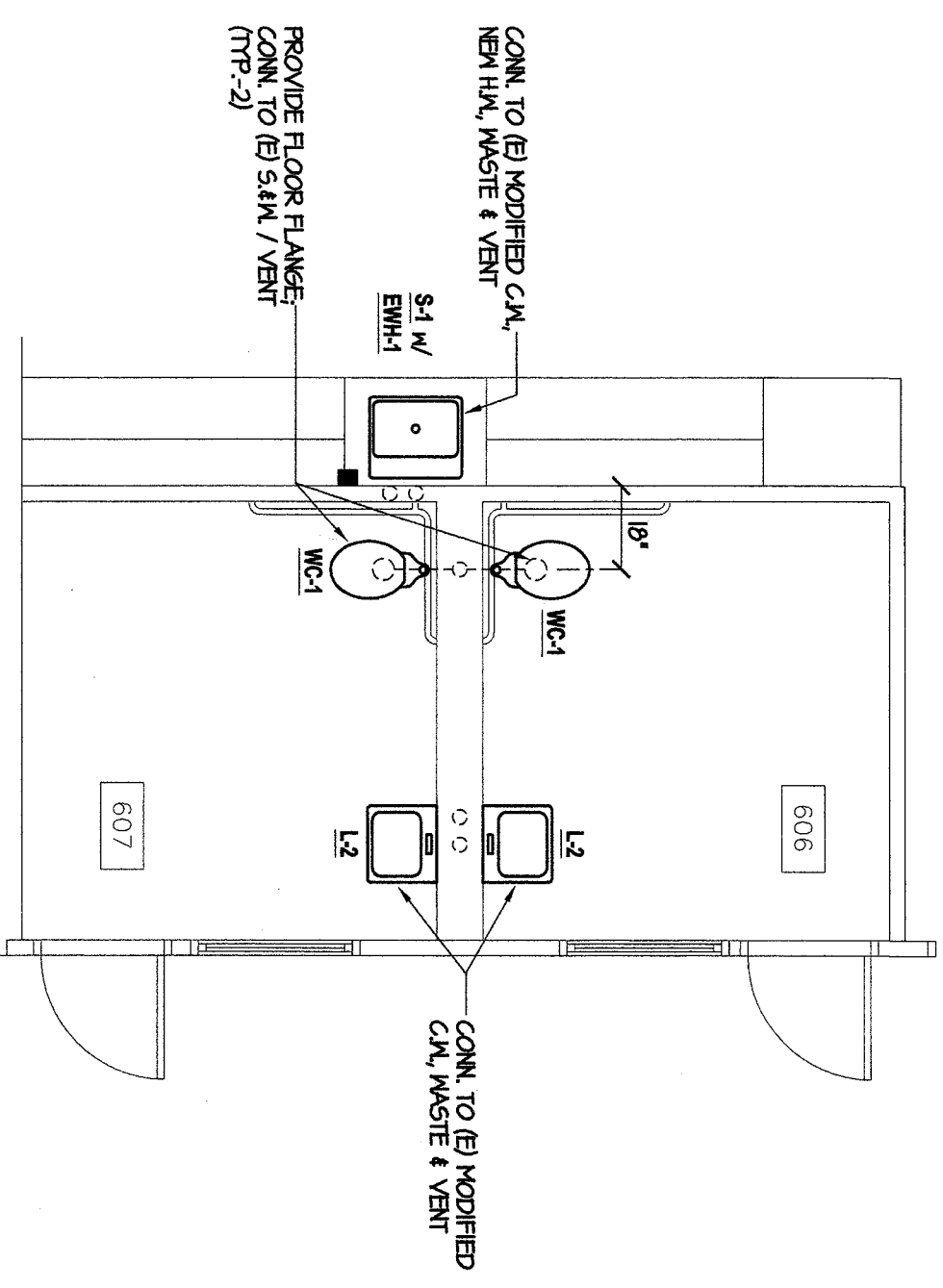
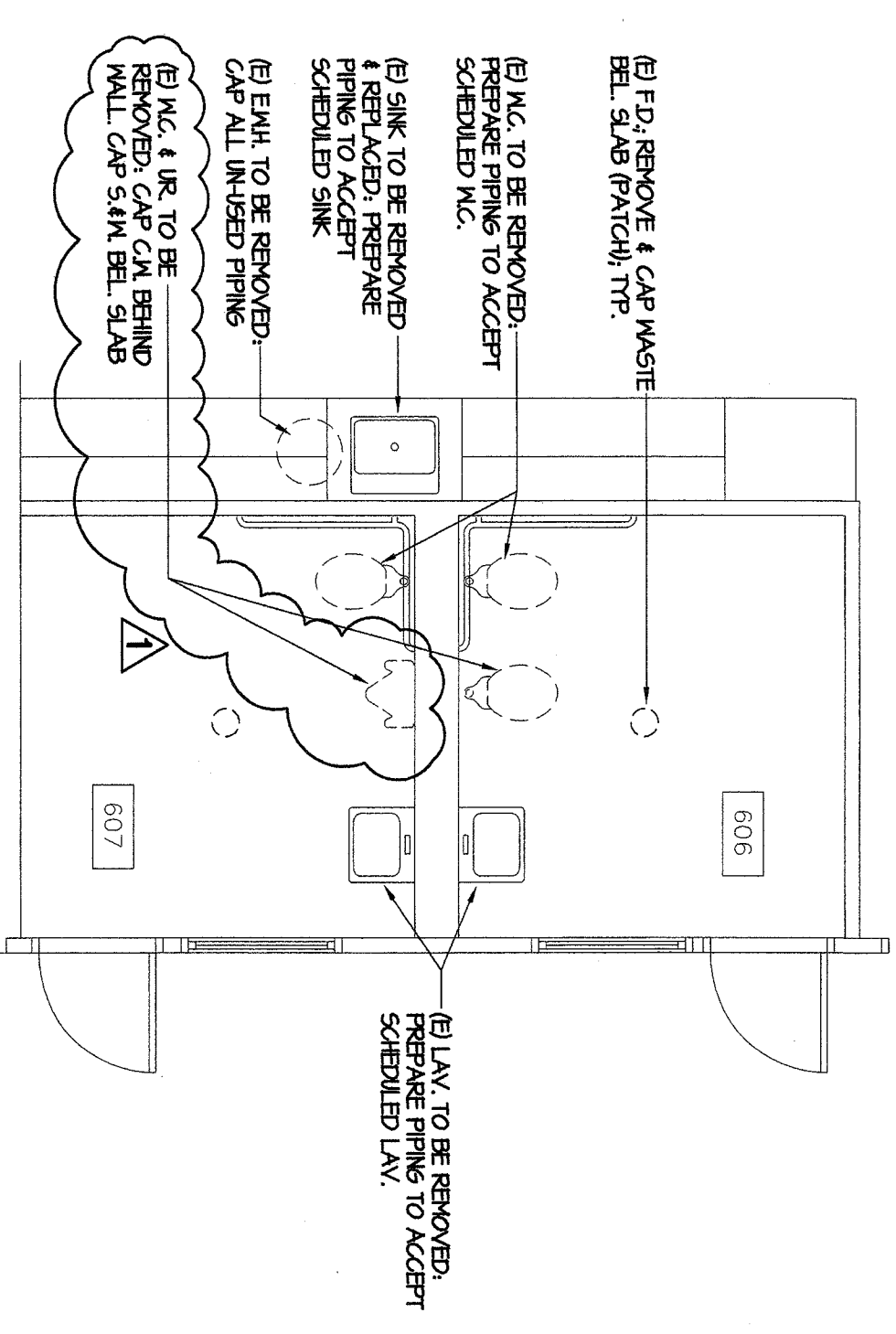
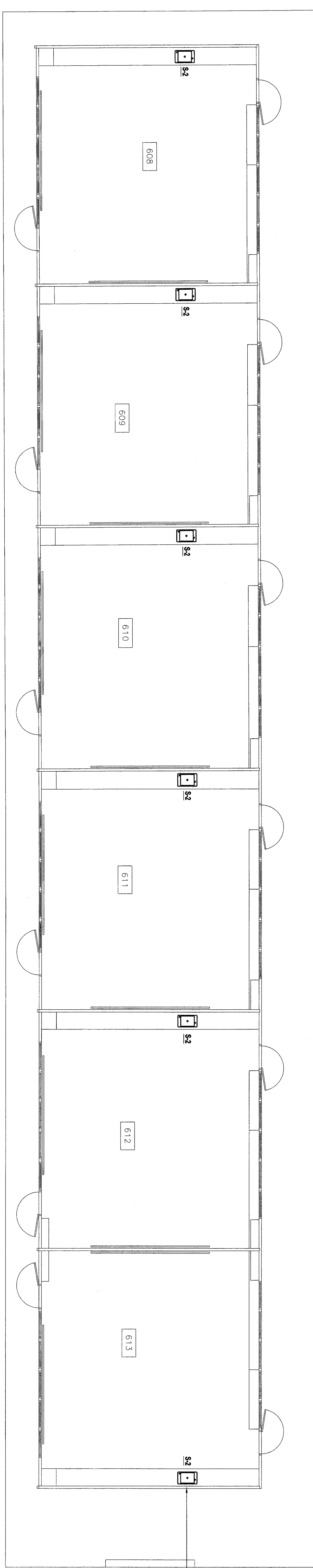
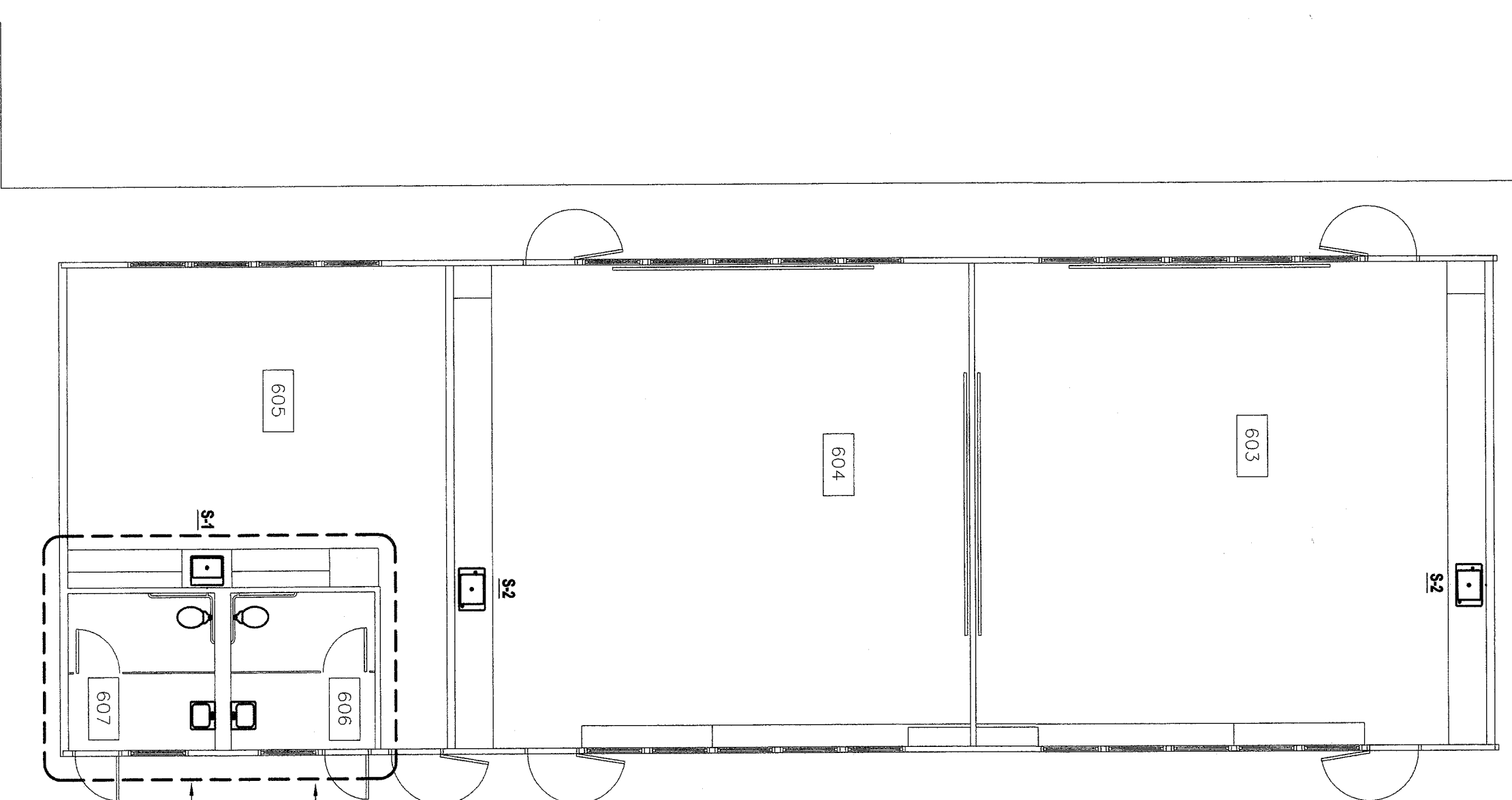
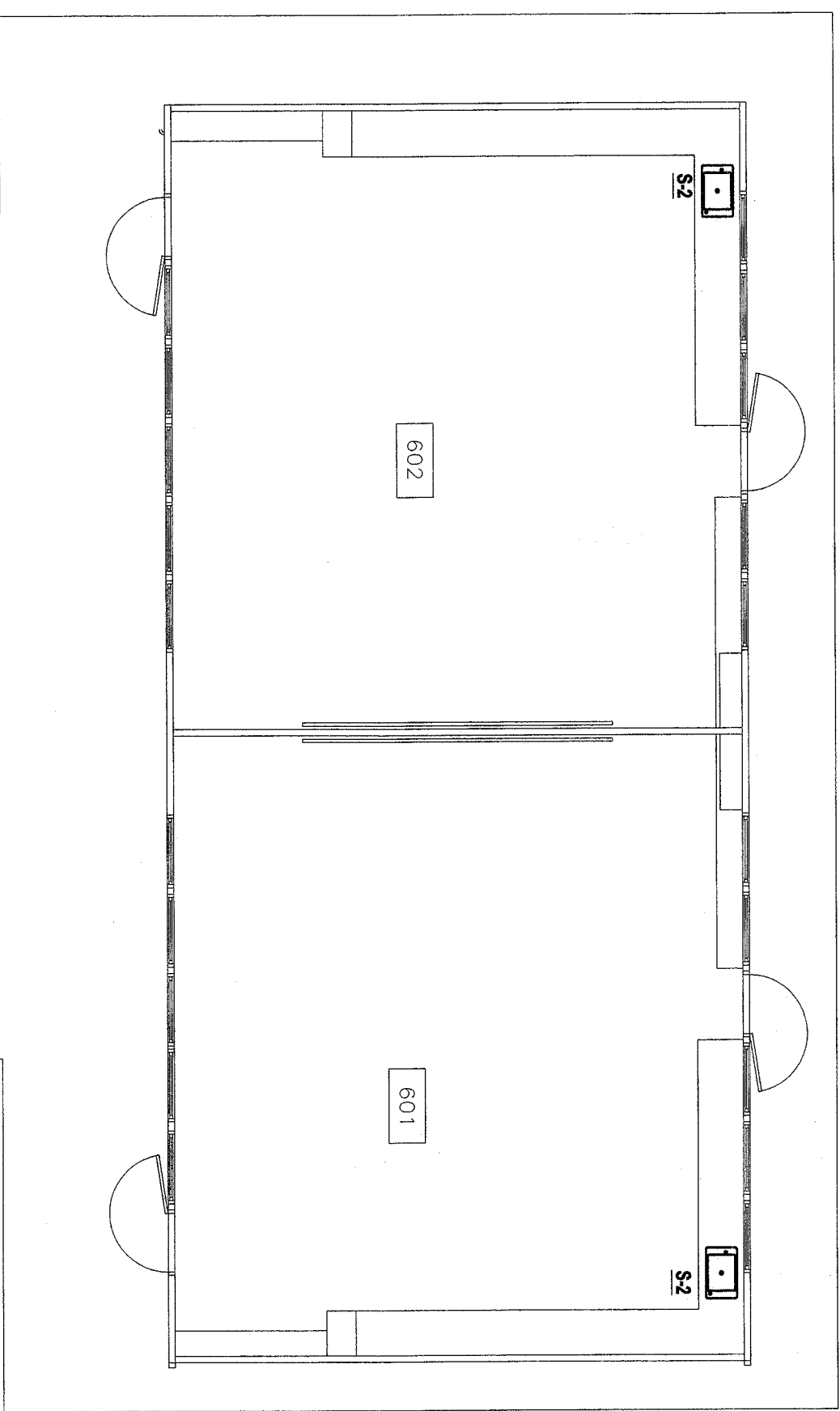
FILE NO.: 15-6

IDENTIFICATION STAMP
DIV. OF THE STATE ARCHITECT
APP. NO. 03-106663
AC: _____ FTS: _____ SS: _____
DATE: _____

MODERNIZATION
FOR
HENRY ESSLER SCHOOL
2901 ESSLER STREET
BAKERSFIELD, CA 93306
BAKERSFIELD CITY
SCHOOL DISTRICT

PLUMBING FLOOR PLAN BUILDING 600
SCALE: 1/8"=1'-0"

Version Date: 02-126
Job no.: 10/18/02
date: 10/18/02
drawn by: M. ARNSTROM
chk'd by: R. BANKS
©Copyright 2002



BUILDING 600 PLUMBING FLOOR PLAN
SCALE: 1/8"=1'-0"

PARTIAL PLUMBING DEMO FLOOR PLAN
SCALE: 1/4"=1'-0" A

PARTIAL PLUMBING FLOOR PLAN
SCALE: 1/4"=1'-0" B

FOR PLUMBING DEMO
FOR THE DEMO FLOOR PLAN
SEE DETAIL TO THIS SHEET

REMOVE & REPLACE EJ
CLASSROOM SINKS (MP)
CONN. TO 1/2" SAN. / VENT

① F.D. REMOVE 1 CUP WASTE
BEL. SLAB (PARTIAL) TRP

② MC. TO BE REMOVED.
PRESERVE FINISH TO ACCEPT
SCHEDULED MC.

③ SINK TO BE REMOVED
& REPLACED. PRESERVE
FINISH TO ACCEPT
SCHEDULED SINK

④ EWH. TO BE REMOVED.
CUP. ALL WASTED FINISH
PRESERVE FINISH TO ACCEPT
SCHEDULED FIN.

⑤ MC. & LIN. TO BE
REMOVED. CUP. C.M. BEING
REMOVED. CUP. SINK BEL. SLAB

CONN. TO ② HOOPED C.M.
NEW LIN. WASTE & VENT

S4 W
EWH

REMOVE FLOOR PLUMBING
CONN. TO ② SAN. / VENT
(TRP-2)

CONN. TO ② HOOPED
C.M. WASTE & VENT