

Bakerfield
 5500 Ming Avenue, Suite 450, Bakerfield, CA 93309
 661.836.4300

San Joaquin
 150 South First St., Suite 200
 San Joaquin, California 95113
 Tel: 408.927.0844

San Luis Obispo
 4115 Wood Street, Suite 401
 San Luis Obispo, CA 93401
 Tel: 805.546.0304

Oakland
 200 Lake Street Plaza, Suite 200
 Oakland, California 94612
 Tel: 510.881.0210

Principal Architects
 4000 Broadway, Suite 2000
 San Francisco, CA 94115
 Tel: 415.774.1500



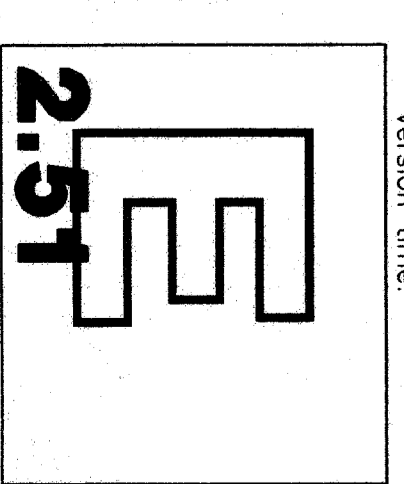
PERMITS
ENGINEERING
 465 West Colton Ave, Suite 106
 Fresno, California 93711
 (559) 239-4400 / (559) 432-4694 fax
 ESTABLISHED 1988
 James W. Gardner, Technical Engineer
 E.E. #5101

AGENCY TRACKING NO.: _____
 FILE NO.: 15-8
 IDENTIFICATION STAMP
 DIV. OF THE STATE ARCHITECT
 PROJ. NO. 03-106663
 DATE 02-21-03
 PLS. STAMP SS RZ

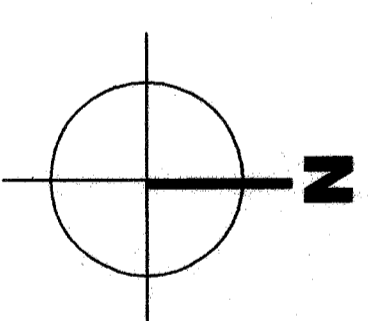
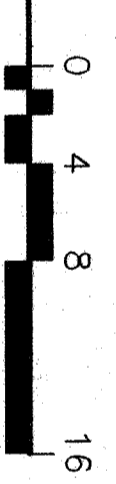
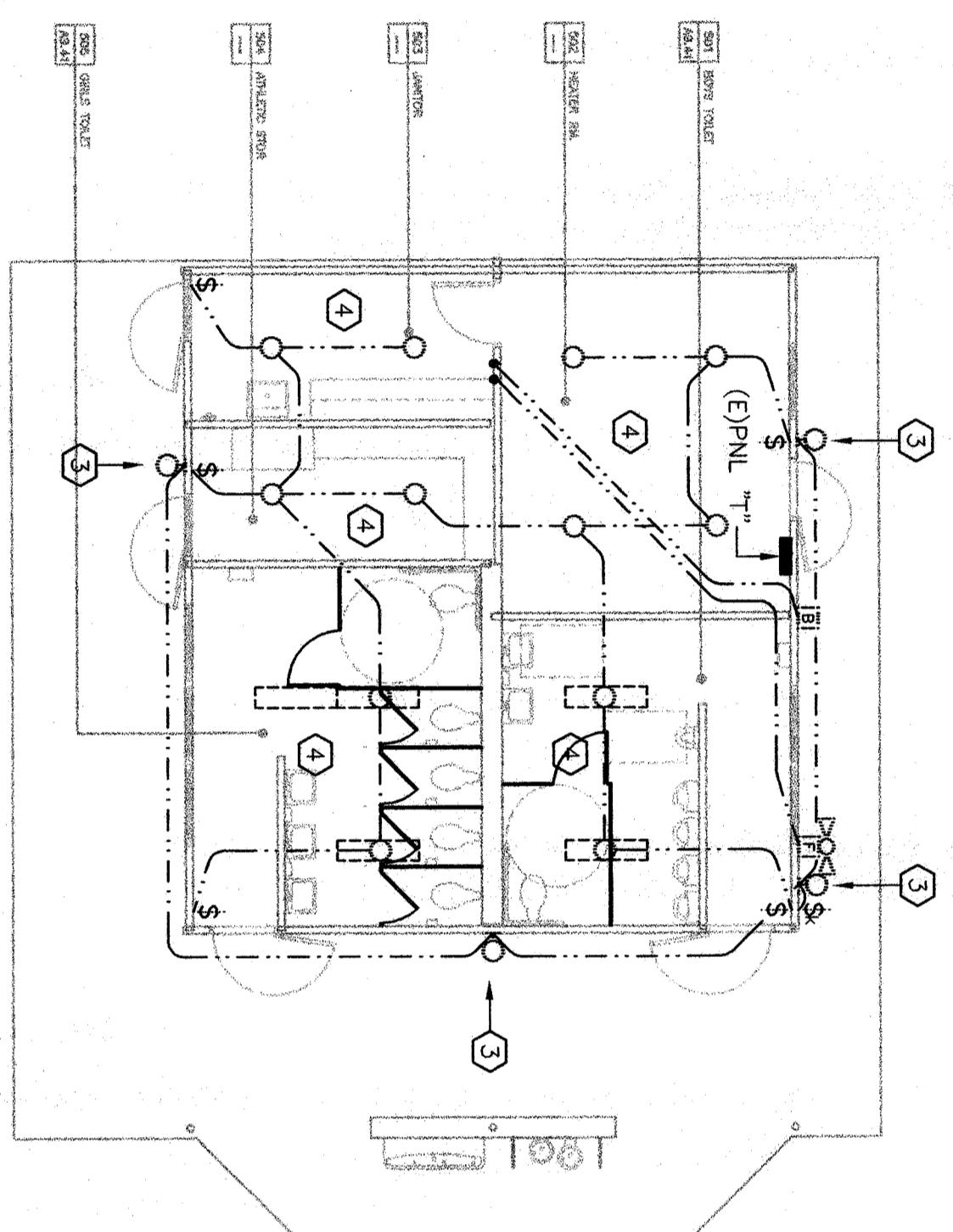
MODERNIZATION
FOR
 HENRY ESSLER SCHOOL
 2901 ESSLER STREET
 BAKERSFIELD, CA 93306
 BAKERSFIELD CITY
 SCHOOL DISTRICT

BUILDING 500
LIGHTING AND
POWER / SIGNAL
FLOOR PLANS

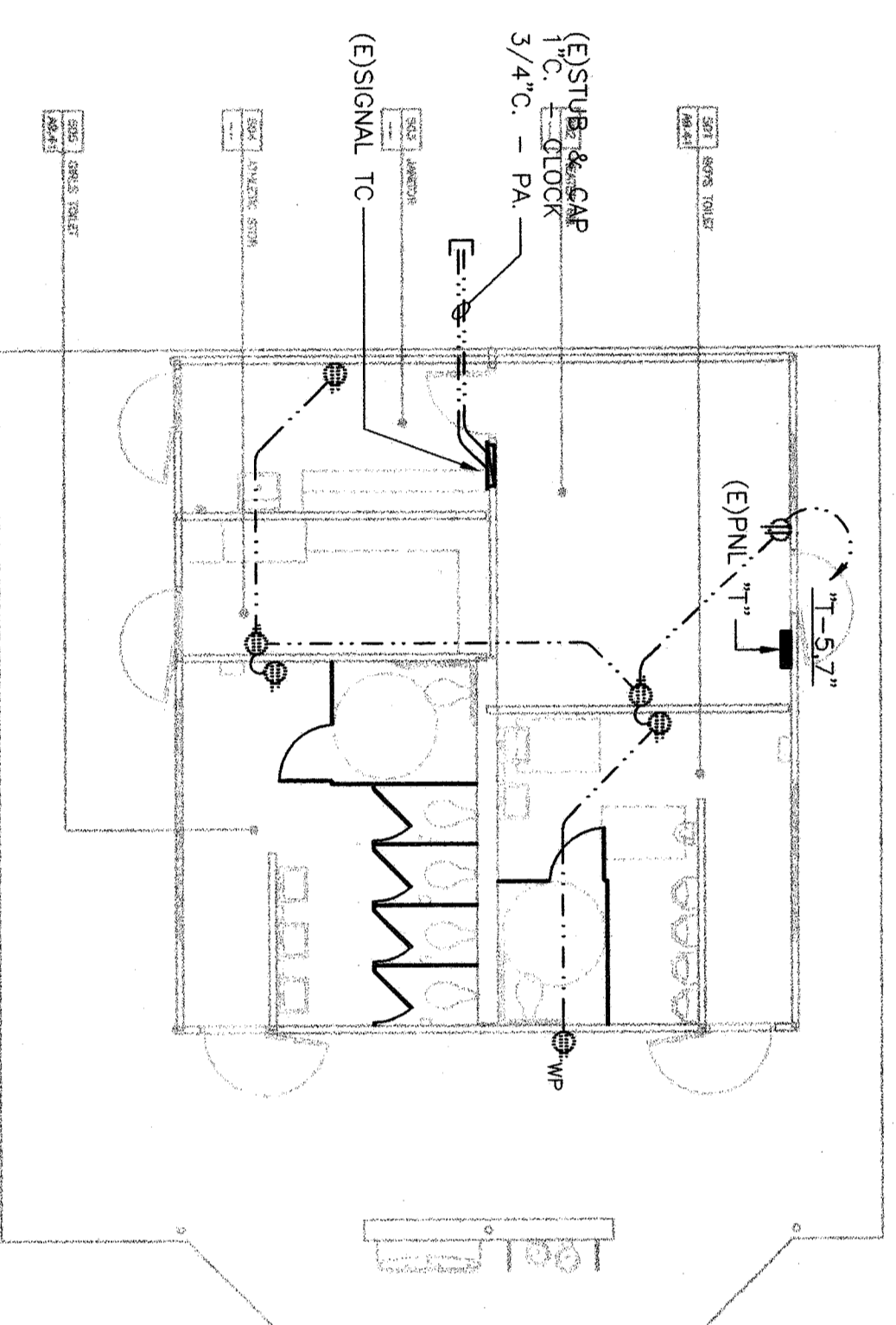
Version Date: 02-126
 job no. 06/24/03
 date 06/24/03
 drawn by T.V.A.
 chkd by D.P.C.
 ©copyright 2003



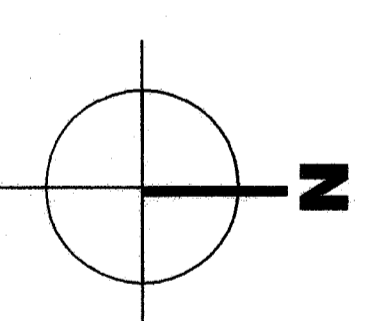
- KEYNOTES**
- ① INSTALL WIREMOLD # 5400 WITH OUTLETS AT 30" O.C. COORDINATE W/IG. HEIGHT WITH ARCHITECT'S ELEVATIONS.
 - ② REPLACE EXISTING EXTERIOR DOWNLIGHT. USE RETROFIT KIT FIXTURE TYPE "T".
 - ③ REPLACE EXISTING WALL BRACKET FIXTURE. USE FIXTURE TYPE "G".
 - ④ REPLACE EXISTING FIXTURES. USE FIXTURES TYPE "C".
 - ⑤ DISCONNECT AND REMOVE EXISTING 2x4 SURFACE METAL SIDED FIXTURES. REMOVE (E) HOOKS FROM AS APPLICABLE.
 - ⑥ REPLACE EXISTING FIXTURE WITH NEW FIXTURE TYPE "D". EXISTING FIXTURE TO REMAIN.
 - ⑦ EXISTING 2x4 SURFACE METAL SIDED FIXTURES WITH (2) 40W T-12 LAMPS. REPLACE LAMPS WITH (2) T8 LAMPS. ELECTRONIC BALLAST. REPLACE LENS WITH KSH K12.725 ASPHYLIC LENS.
 - ⑧ DISCONNECT AND REMOVE EXISTING FIXTURES.
 - ⑨ WIREMOLD # 5400 RISER UP TO CEILING.
 - ⑩ REPLACE (E) PANEL NEW PANEL. SMALL HAVE (42) 20/1 BREAKERS. 100A BUS. USE SQUARE "D" M000(8) OR EQUAL. RECONNECT (E) CIRCUITS AND FEEDER.
- NOT ALL KEYNOTES APPLY TO THIS SHEET.



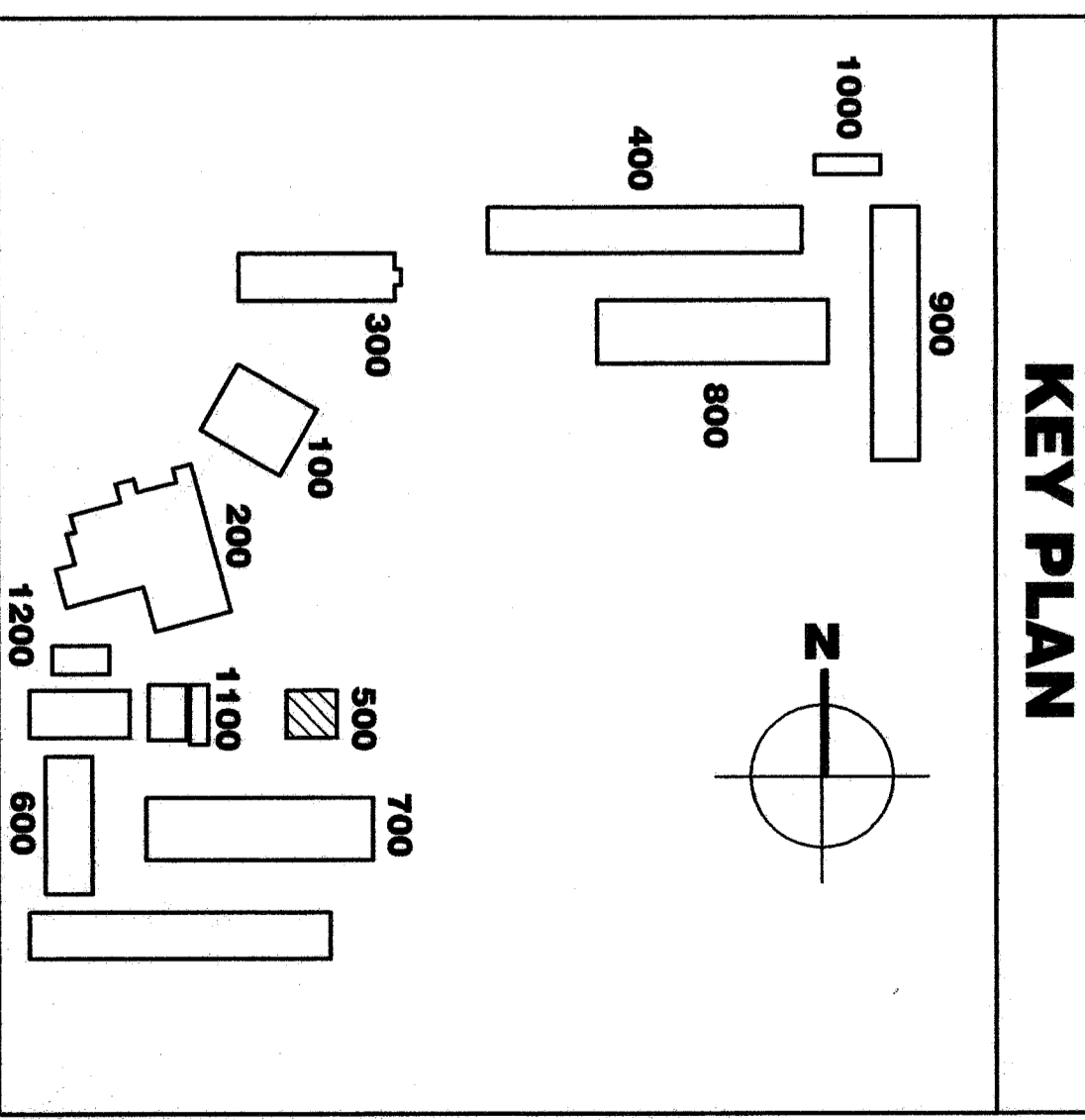
LIGHTING PLAN BLDG. 500



Item (14)
 #1
 Refer to Electrical Drawings, Sheet E2-81A - Building 500, Power and Signal
 Rider Plans
 ADD one dedicated circuit for each hand dryer in 501 and 505. PROVIDE 1/2" conduit with 2#10CU to Panel. From each hand dryer and ADD two 20A breakers 51 and 52. Refer to Architectural Drawings, Sheet A2-51 for clarification.



POWER / SIGNAL FLOOR PLAN BLDG. 500



FULLY AUTOMATIC SYSTEM
FIRE ALARM COMPLETE
PLAN SUBMITTAL