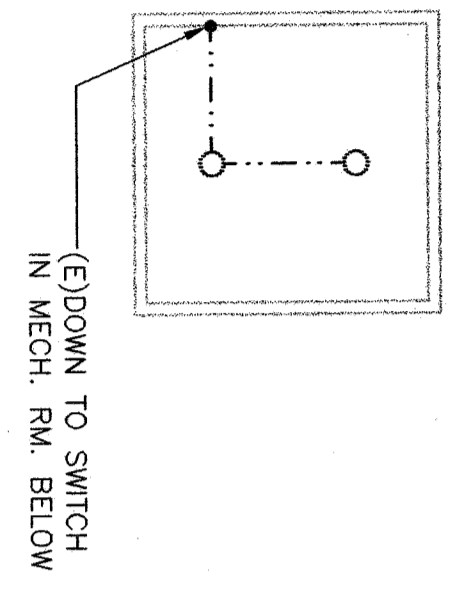
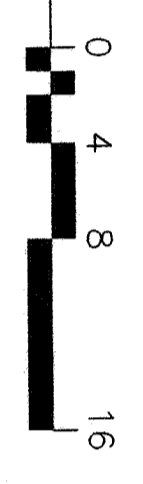
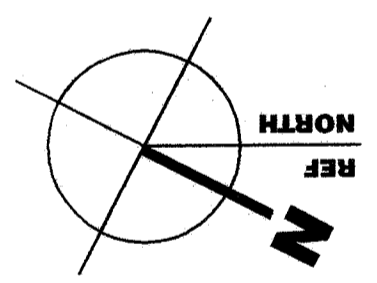
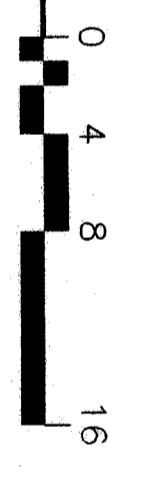


MECH. ROOM ABOVE DISHWASHING



LIGHTING FLOOR PLAN BLDG. 200

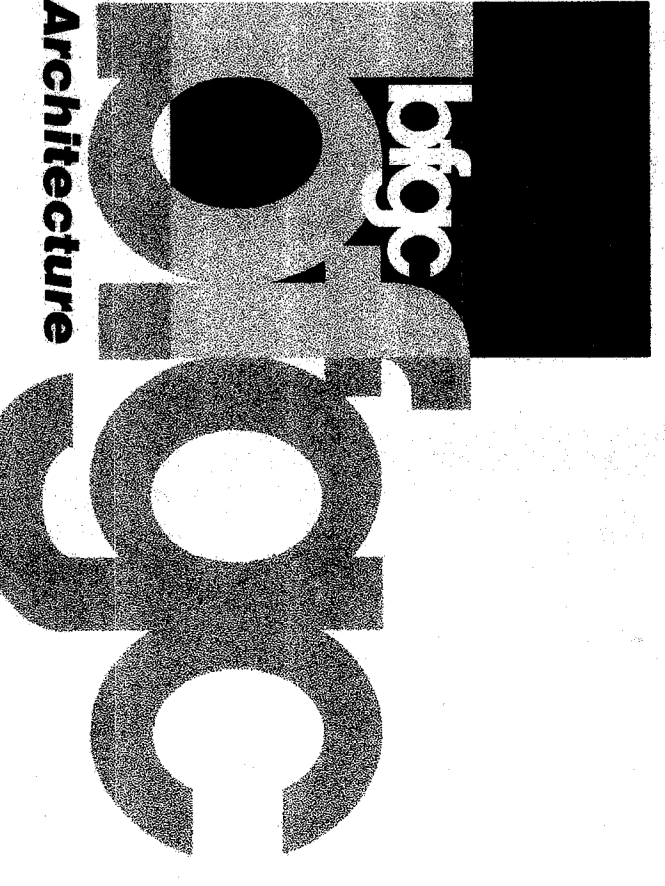
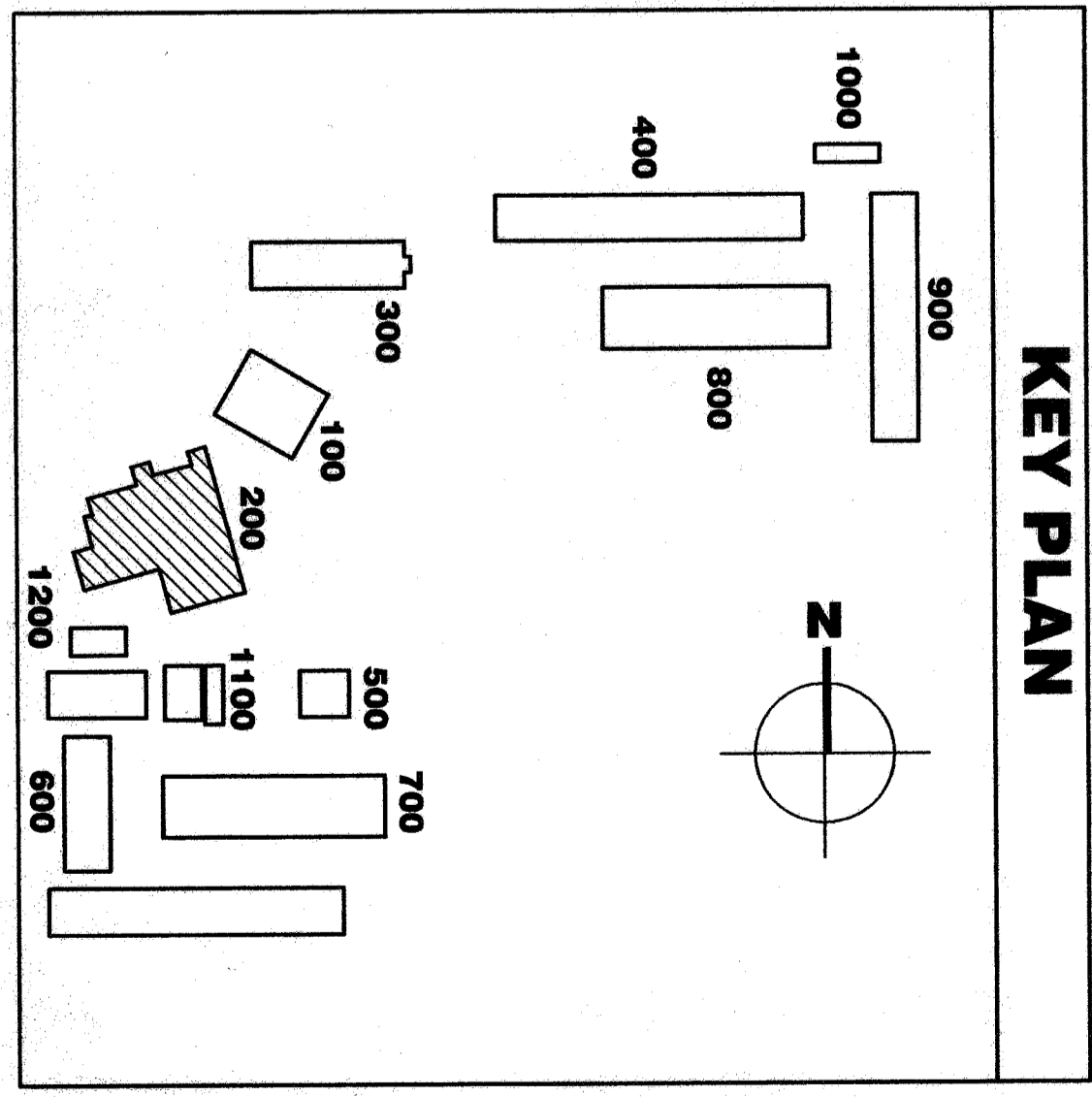


KEYNOTES

- 1 INSTALL WIREPULD PLUMBING # 1/2" WITH OUTLETS AT 12" O.C. MOUNTED ABOVE BACKWASH. CONNECT TO EXISTING DUPLEX OUTLET ABOVE COUNTER.
- 2 REPLACE EXISTING EXTERIOR DOWNLIGHT. USE RETROFIT KIT FIXTURE TYPE "T".
- 3 REPLACE EXISTING WALL BRACKET FIXTURE. USE FIXTURE TYPE "G".
- 4 REPLACE EXISTING FIXTURES. USE FIXTURES TYPE "C1".
- 5 EXISTING 2x4 SURFACE MOUNTED FIXTURES WITH (4) LAMPS. REPLACE EXISTING BALLAST WITH RAPID START, LOW HARMONICS, ELECTRONIC BALLAST. REPLACE LENS WITH KSH K12.125 ACRYLIC LENS.
- 6 REPLACE EXISTING FIXTURE WITH NEW FIXTURE TYPE "T".
- 7 EXISTING FIXTURE TO REMAIN.
- 8 EXISTING WAREHOUSING FIXTURES WITH (2) 40W T-12 LAMPS. REPLACE EXISTING LAMPS WITH (2) T8 LAMPS. REPLACE EXISTING BALLAST WITH RAPID START, LOW HARMONICS, ELECTRONIC BALLAST. CLEAN EXISTING HOUSING AND LENS.
- 9 RELOCATE EXISTING LIGHT FIXTURE AND RECONNECT TO EXISTING LIGHTING CIRCUIT. PATCH AND REPAIR CEILING AS REQUIRED.
- 10 **PROVIDE EMERGENCY BATTERY PACK.**

NOT ALL KEYNOTES APPLY TO THIS SHEET.

Refer to Electrical Drawings, Sheet E221 - Building 200, Lighting Floor Plan. CLARIFY all exterior downlights shall be replaced per Reference Note 2.



Bakersfield
5500 Irving Avenue, Suite 450, Bakersfield, CA 93309
805.838.4300

San Jose
2000 San Jose Avenue, Suite 200
San Jose, California 95113
408.924.9544
or 408.252.8844

San Luis Obispo
4115 Grand Street, Suite B-5
San Luis Obispo, CA 93401
805.466.0504

Oakland
5501 Frank Avenue, Suite 300
Oakland, California 94612
510.881.0570
or 510.881.0574

Principal Architects
James W. Gordon, S.E.
C-3122
Robert L. Miller, S.E.
C-1879

James W. Gordon, S.E. No. 5101
09/20/08
1587/1532-4400 / 1587/432-4461 fax
James W. Gordon, Electrical Engineer
E.E. #5101

AGENCY TRACKING NO.: _____
FILE NO.: 15-6
CONSTRUCTION STAMP
DWG. OF THE SITE ARCHITECT
PRINT NO.: 03-106663
DATE: 08-24-03

MODERNIZATION
FOR
HENRY ESSLER SCHOOL
2901 ESSLER STREET
BAKERSFIELD, CA 93306
BAKERSFIELD CITY
SCHOOL DISTRICT

BUILDING 200
LIGHTING
FLOOR PLAN

Version Date:	Version Name:
job no. 02-126	
date 06/24/03	
drawn by T.V.A.	
chk'd by D.P.G.	
©copy/right 2003	

