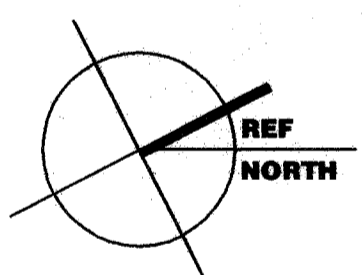


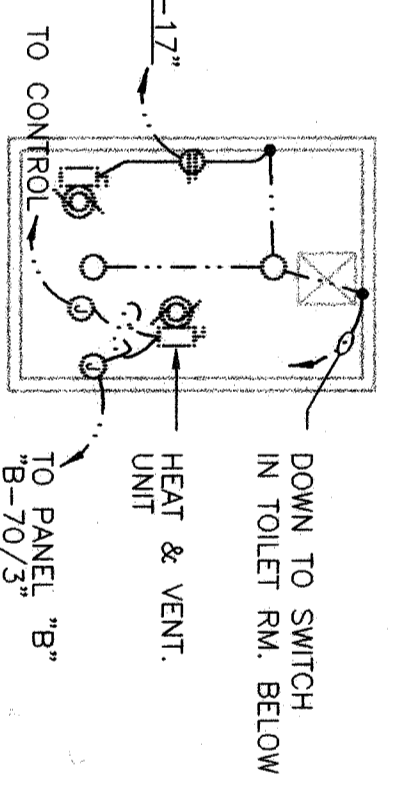
LIGHTING FLOOR PLAN BLDG. 100



- DEMOLITION NOTES:**
1. REMOVE AND/OR REROUTE AND RECONNECT ANY EXISTING CIRCUITS INTERRUPTED BY DEMOLITION WORK. ALL EXISTING EQUIPMENT THAT IS REMOVED SHALL BE RETURNED TO OWNER.
 2. REMOVE AND/OR REROUTE AND RECONNECT ANY EXISTING ELECTRICAL WORK WHICH INTERFERES WITH NEW CONSTRUCTION AS REQUIRED.
 3. ALL CONDUITS SHALL BE CONCEALED WHERE SPECIFICALLY INDICATED. ALL CONDUITS SHALL BE INSTALLED IN A MANNER TO THE SATISFACTION OF THE ARCHITECT AND REUSED.
 4. EXISTING ELECTRICAL OUTLET BOXES AND RACKWAYS, WHERE LOCATED IN A MANNER TO THE SATISFACTION OF THE ARCHITECT, SHALL BE IN GOOD CONDITION BY THE ARCHITECT. MAY BE REFRESHED AND REUSED.
 5. INSTALL NEW CONDUCTORS WHENEVER EXISTING OUTLET BOXES, ON RACKWAYS ARE USED. DO NOT USE EXISTING CONDUCTORS. MINIMUM WIRE SIZE SHALL BE #12 AWG COPPER UNLESS OTHERWISE NOTED.
 6. REMOVE CONDUCTORS FROM ANY ABANDONED RACKWAY. BACK TO NEAREST TERMINATION POINT.
 7. COORDINATE REMOVAL OF EXISTING LIGHT FIXTURES, OUTLETS, PHONES, ETC., WITH ARCHITECTURAL PLAN.
 8. REMOVE EXISTING OUTLET DEVICES AND PATES REMAINING AND PROVIDE ALL NEW IN EXISTING BOXES AS REQUIRED.
 9. COORDINATE WITH OWNER ALL DISRUPTION OF SCHOOL CLOCK, PROGRAM, FIRE ALARM, INTERCOM SYSTEMS AND POWER SERVICE.
 10. ALL DEVICES, ETC. IN WALLS TO BE DEMOLISHED SHALL BE DISCONNECTED AND REMOVED, WHETHER INDICATED OR NOT. FIELD CONTRACTOR SHALL PATCH TO MATCH ALL EXISTING SURFACES TO REMAIN WHICH MAY BE DAMAGED DURING ELECTRICAL DEMOLITION.
 11. FLUSH OUT ALL EXISTING DEVICES TO NEW WALL FINISH. REMOVE AND REINSTALL ALL (E)SURFACE RACKWAYS. REFER TO ARCHITECTURAL DRAWINGS. FIELD VERIFY ALL CONDITIONS.
 - 12.

KEYNOTES

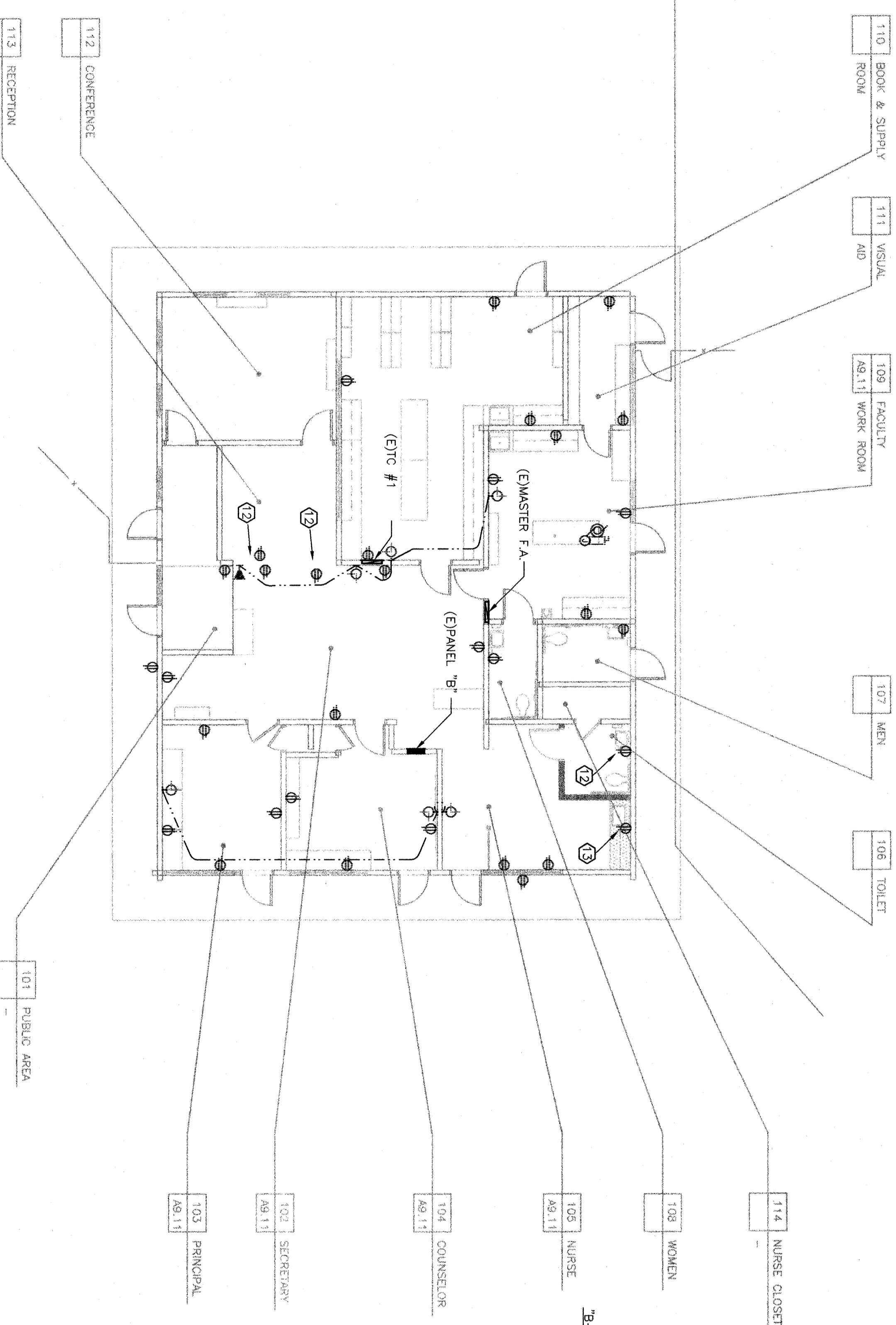
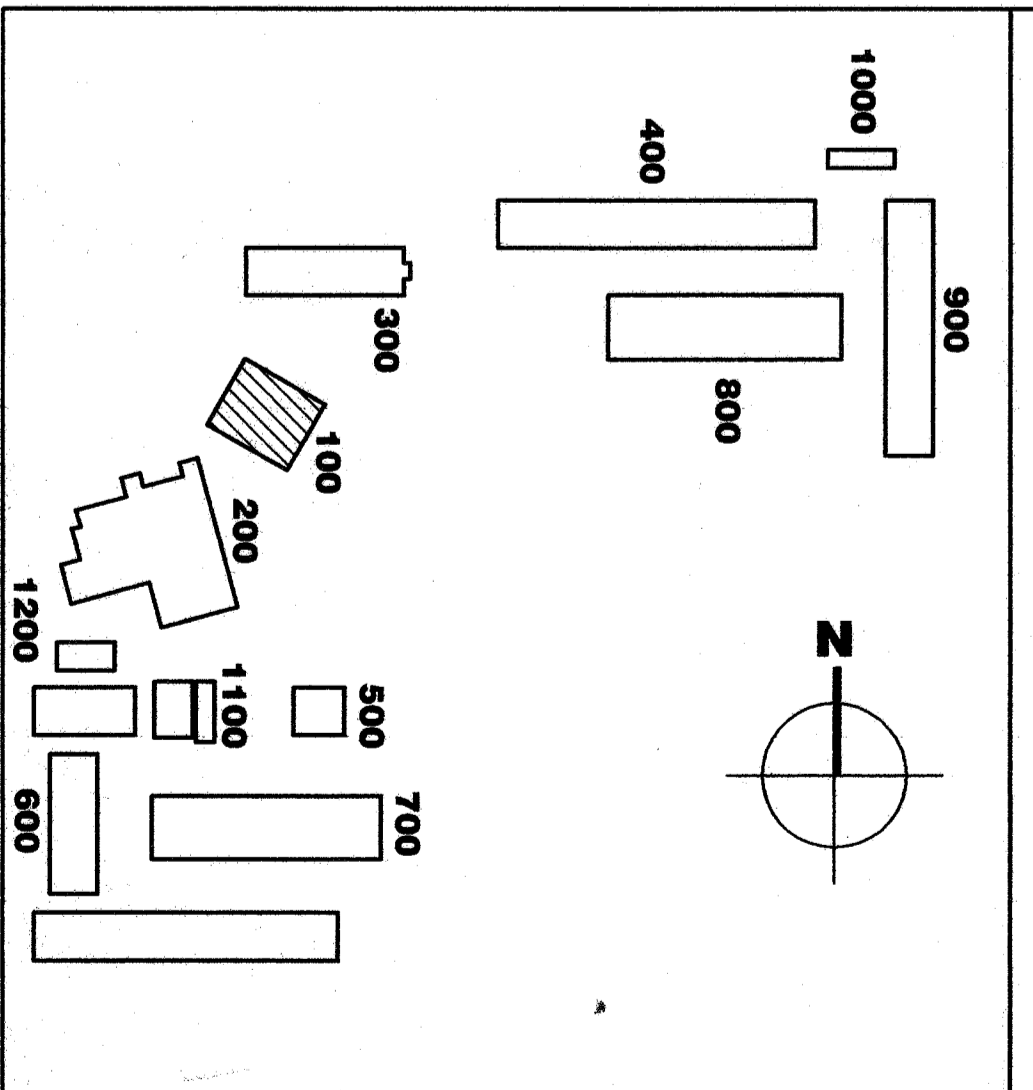
1. INSTALL WIREMOLD PLUGMOLD # AL2000 WITH OUTLETS AT 12" O.C. MOUNTED ABOVE BACKSPLASH. CONNECT TO EXISTING DUPLEX OUTLET ABOVE COUNTER.
2. REPLACE EXISTING EXTERIOR DOWNLIGHT. USE RETROFIT KIT FIXTURE TYPE "F".
3. REPLACE EXISTING WALL BRACKET FIXTURE. USE FIXTURE TYPE "G".
4. REPLACE EXISTING FIXTURES. USE FIXTURES TYPE "C1".
5. EXISTING 2x4 SURFACE METAL SIDED FIXTURES WITH (4) 40W T-12 LAMPS. REPLACE LAMPS WITH (4) T8 LAMPS. REPLACE BALLAST WITH RAPID START. LOW HARMONICS. ACRYLIC LENS. REPLACE LENS WITH RSN K12.125 ACRYLIC LENS.
6. REPLACE EXISTING FIXTURE WITH NEW FIXTURE TYPE "D". EXISTING FIXTURE TO REMAIN.
7. EXISTING WAREHOUSE FIXTURES WITH (2) 40W T-12 LAMPS. REPLACE EXISTING BALLAST WITH RAPID START. LOW HARMONICS. ELECTRONIC LAMPS. CLEAN EXISTING HOUSING AND LENS.
8. RELOCATE EXISTING LIGHT FIXTURE AND RECONNECT TO EXISTING LIGHTING CIRCUIT. PROVIDE FOR EXTENSION OF REMAIN CABLE TO MATCH ADJACENT EXISTING SURFACE.
9. REMOVE EXISTING LIGHT FIXTURE. PATCH AND REPAIR CEILING TO MATCH ADJACENT EXISTING SURFACE.
10. PROVIDE NEW LIGHT FIXTURE AND WALL SWITCH CONTROL. EXTEND EXISTING LIGHTING CIRCUIT TO NEW LIGHT FIXTURE FROM EXISTING REMOVED LIGHT FIXTURE.
11. REMOVE EXISTING RECEPTACLE AND PULL OUT EXISTING CONDUCTORS BACK TO NEXT EXISTING DEVICE TO REMAIN. REQUIRED. DRAIN COVER PLATE OR PATCH WALL AS REQUIRED.
12. RELOCATE EXISTING RECEPTACLE CIRCUIT TO ABOVE CEILING. PROVIDE NEW RECEPTACLE. REPAIR AND REFINISH EXACT LOCATION AND HEIGHT WITH ARCHITECTURAL. NOT ALL KEYNOTES APPLY TO THIS SHEET.
- 13.



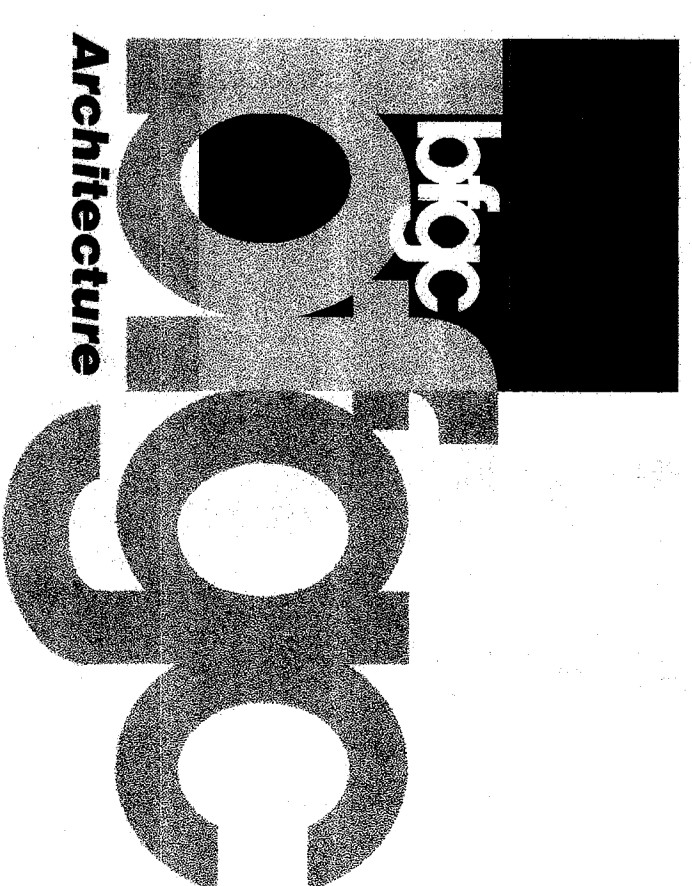
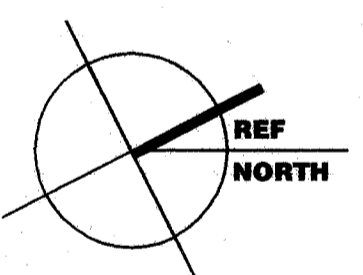
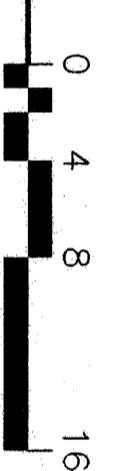
FAN ROOM ABOVE MENS TOILET



KEY PLAN



POWER / SIGNAL FLOOR PLAN BLDG. 100



Bakersfield
5500 Ming Avenue, Suite 450, Bakersfield, CA 93309
661.836.4300 fax 661.836.4311

San Jose
150 South First St., Suite 200
Bakersfield, CA 93310
661.836.4341 fax 661.836.4344

San Luis Obispo
417 E. Main St., Suite 100
San Luis Obispo, CA 93401
805.546.0333 fax 805.546.0334

Oakland
350 Park Square Plaza, Suite 300
Oakland, California 94612
415.763.1274 fax 415.763.1274

Principal Architects
James A. Wilson, D.L.A.
C-2132
5500 Ming Avenue, Suite 450
Bakersfield, CA 93309
661.836.4300 fax 661.836.4311

Principal Architects
James A. Wilson, D.L.A.
C-2132
5500 Ming Avenue, Suite 450
Bakersfield, CA 93309
661.836.4300 fax 661.836.4311

Principal Architects
James A. Wilson, D.L.A.
C-2132
5500 Ming Avenue, Suite 450
Bakersfield, CA 93309
661.836.4300 fax 661.836.4311

Principal Architects
James A. Wilson, D.L.A.
C-2132
5500 Ming Avenue, Suite 450
Bakersfield, CA 93309
661.836.4300 fax 661.836.4311

Principal Architects
James A. Wilson, D.L.A.
C-2132
5500 Ming Avenue, Suite 450
Bakersfield, CA 93309
661.836.4300 fax 661.836.4311

Principal Architects
James A. Wilson, D.L.A.
C-2132
5500 Ming Avenue, Suite 450
Bakersfield, CA 93309
661.836.4300 fax 661.836.4311

Principal Architects
James A. Wilson, D.L.A.
C-2132
5500 Ming Avenue, Suite 450
Bakersfield, CA 93309
661.836.4300 fax 661.836.4311

Principal Architects
James A. Wilson, D.L.A.
C-2132
5500 Ming Avenue, Suite 450
Bakersfield, CA 93309
661.836.4300 fax 661.836.4311

Principal Architects
James A. Wilson, D.L.A.
C-2132
5500 Ming Avenue, Suite 450
Bakersfield, CA 93309
661.836.4300 fax 661.836.4311

Principal Architects
James A. Wilson, D.L.A.
C-2132
5500 Ming Avenue, Suite 450
Bakersfield, CA 93309
661.836.4300 fax 661.836.4311

Principal Architects
James A. Wilson, D.L.A.
C-2132
5500 Ming Avenue, Suite 450
Bakersfield, CA 93309
661.836.4300 fax 661.836.4311

Principal Architects
James A. Wilson, D.L.A.
C-2132
5500 Ming Avenue, Suite 450
Bakersfield, CA 93309
661.836.4300 fax 661.836.4311