

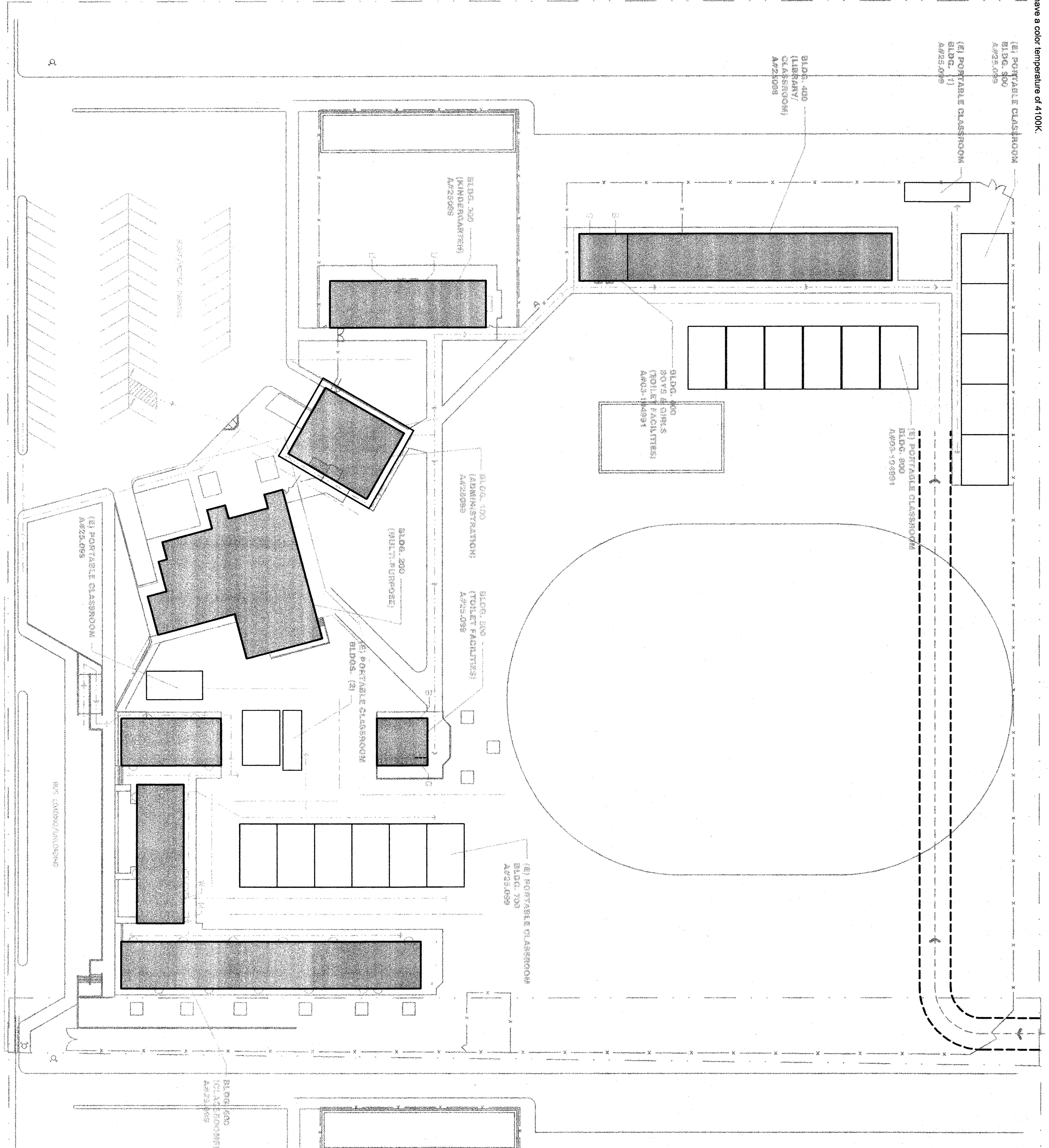
TYPE	DESCRIPTION	MANUFACTURER	UNIT	QTY	VOL
A	2x4 MASTER SLAVE	ULTRONIA #2390-333-120 GEB-10RS-LST11	1 5/8" RECESS	120	354
M	2x4 STAND ALONE	ULTRONIA #2390-333-120 GEB-10RS	1 5/8" RECESS	120	354
B	NOT USED		RECESS	120	
C	1x4 SURFACE WRAPAROUND	ULTRONIA VESLO-120-GEB-10RS	1 1/2" SURFACE	120	79 354
C1	1x4 SURFACE WRAPAROUND	ULTRONIA LB-232-120-GEB10RS	1 1/2" SURFACE	120	79 354
C2	1x4 RECESSED TROFFER	ULTRONIA SP-232-120-GEB10RS	1 1/2" RECESS	120	79 354
D	12x12 SQUARE DOWNLIGHT	ULTRONIA 173-140	2 1/8" RECESS	120	00
E	RECESSED DOWNLIGHT	ULTRONIA AF 1/280T 848 120	1 28W RECESS	120	00
F	13x13 SQUARE COMPACT FLUORO	DESIGNER QUANTO 13-13-88-8-85-01-0-0-P	2 28W SURFACE	120	00
G	WALL PACK	ULTRONIA TM-280T-120-	1 3/4" SURFACE	120	00
H	NOT USED			120	
X	EXIT SIGN	ULTRONIA LE-5-W-1-R-120	2 1/2" SURFACE	120	00

NOTES: 1. LIGHT FIXTURE SHOWN HALF SHAVED AND MARKED WITH 'TM' SHALL BE PROVIDED WITH A MINOROL BATTERY PACK.

Item (8) Refer to Electrical Drawings, Sheet, E1.11 - Fixture Schedule.

Item (9) QUANTITY of fluorescent lamps specified shall have a color temperature of 4100K.

- GENERAL NOTES:**
- ALL WORK SHALL BE INSTALLED PER BAKERSFIELD CITY SCHOOL DISTRICT STANDARDS.
  - ALL STRAPERS PROVIDED BY MECHANICAL, INSTALLED BY ELECTRICAL.
  - ALL CONTROL WIRING BY MECHANICAL.
  - THE CONTRACTOR SHALL COORDINATE WITH ARCHITECTURAL AND WALLS AND FIRE WALLS AND SHALL ADHERE TO ALL CODES AND SPECIFICATIONS INCLUDED IN THESE DOCUMENTS FOR PROPER METHOD OF PENETRATIONS.
  - THE CONTRACTOR SHALL EXAMINE THE SITE AND EXISTING CONDITIONS AND MAKE ALLOWANCES IN THE BID FOR ANY CONDITIONS NOT SHOWN PART 1.50.
  - THE CONTRACTOR SHALL PROVIDE ALL NECESSARY WORK AND EQUIPMENT.
  - ALL PULL BOXES AND JUNCTION BOXES INDICATED ON THE DRAWINGS SHALL BE SIZED IN ACCORDANCE WITH CCC ARTICLE 370.
  - PROVIDE NIPON PULL LINE IN ALL EMPTY CONDUITS.
  - PER GEG 609.7 OPEN IN RATED WALLS SHALL BE 2" APART WHEN MOUNTED ON OPPOSITE SIDES OF RATED WALL. DRAWINGS ARE DIAGRAMMATIC, DO NOT SCALE.
  - VERIFY ALL PULL BOX AND EQUIPMENT LOCATIONS WITH ARCHITECT PRIOR TO ROUGH IN.
  - ALL CONDUITS ENTERING AND EXITING PULL BOXES SHALL BE TRACED TO THE EQUIPMENT AND LABELLED INDICATING CONDUIT ORIGIN AND DESTINATION.
  - REMOVE TEMPORARY PA, GUY, AND FIRE ALARM EQUIPMENT AND REPAIR TO ORIGINAL CONDITION. SYSTEMS ARE TO REMAIN IN PLACE UNTIL PERMANENT SYSTEMS ARE IN PLACE.
  - THE ELECTRICAL CONTRACTOR SHALL PREPARE ALL EXISTING LIGHTING FIXTURES AND LAMPS TO BE REMOVED. ASSUME BALLASTS CONTAIN PCB'S AND DISPOSE OF AS HAZARDOUS WASTE.
  - THE CONTRACTOR WILL PROVIDE A 32" SERVICE LOOP FOR ALL SHIRTS AND DOWNLINE WIRING IN ALL PULL BOXES, AND AT TERMINATION, LOCATED AT LOCATION HEAD-IN EQUIPMENT.
  - THE CONTRACTOR WILL PROVIDE A 72" SERVICE LOOP FOR FIBER OPTIC CABLE IN ALL PULL BOXES AND AT TERMINATION, LOCATED AT LOCATION HEAD-IN EQUIPMENT.
  - ALL FIBER OPTIC CABLES WILL BE TERMINATED AT BOTH ENDS WITH ST-CONNECTORS UNLESS OTHERWISE NOTED.
  - THE CONTRACTOR SHALL EXTEND TO THE MASTER EQUIPMENT ALL SIGNAL, COMMUNICATION AND FIRE ALARM SYSTEMS, MODIFY HEAD-IN EQUIPMENT TO ACCOMMODATE NEW DEVICES AS REQUIRED. CONDITION AND EXPANSIBILITY OF ALL HEAD-IN EQUIPMENT PRIOR TO BID. THE CONTRACTOR SHALL MODIFY ACCORDINGLY.
  - CALL USA UNDERGROUND ALERT AND VERIFY WITH DISTRICT PRIOR TO TRENCHING.
  - ALL LOCAL AREA NETWORK (LAN) EQUIPMENT RACKS TO BE CONDUIT FROM LAN RACKS TO GROUND POINT.
  - ALL NEW TERMINAL CABINETS, JUNCTION BOXES, CONDUIT EXISTING ADJACENT SURFACE SHALL BE COMPLIANT WITH NEMA 3B LABELING.
  - ALL LABELING OF DATA, TELEPHONE, TV, CABLES, JACKS, PLATES SHALL BE COMPLIANT WITH NEMA 3B LABELING.
  - ALL CONDUITS SHALL HAVE MINIMUM 36 COVER.
  - ALL CONDUIT ELBOWS SHALL BE STEEL.
  - CONTRACTOR WILL PURCHASE AND INSTALL TELEPHONE JACKS (2 EACH) AT LOCAL AREA NETWORK (LAN) EQUIPMENT RACK WITH CATEGORY-5 4 PAIR CABLE (GREEN COLOR) TO TELEPHONE BACK BOARD. FURNISH AND INSTALL TELEVISION JACKS (2-CONDUCTORS) AT EACH TELEVISION HEAD-IN EQUIPMENT RACK MOUNT AT NEW TELEPHONE AND TELEVISION DEVICES ON RACK MOUNT PATCH PANEL.
  - CONTRACTOR SHALL TEST AT SIGNAL, DATA, FIRE ALARM, TELEPHONE AND TV VIDEO SYSTEMS TO MAIN SERVICES FOR A COMPLETE OPERATING SYSTEM.



**ELECTRICAL SITE PLAN**

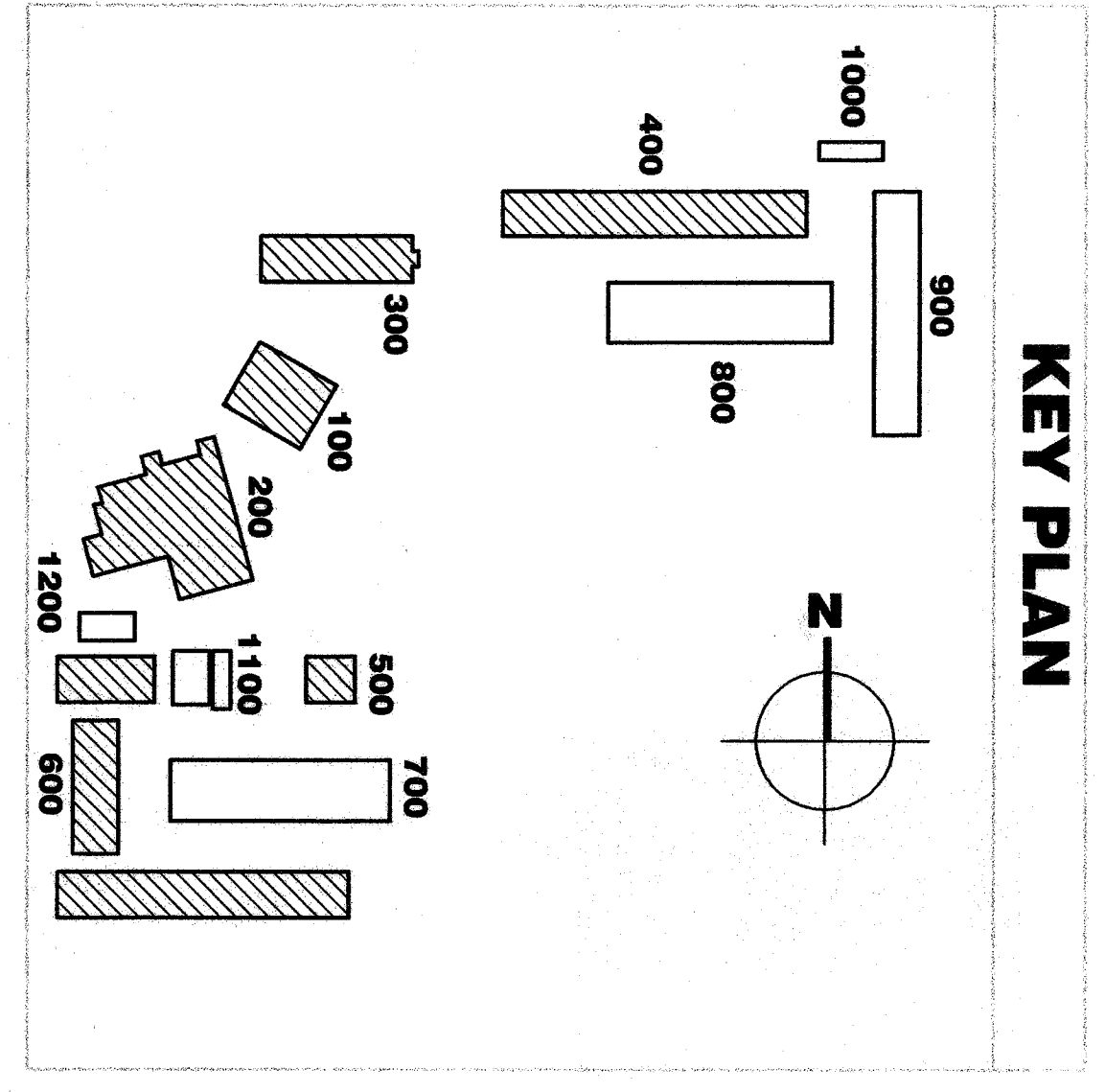
SYMBOL	NAME	DESCRIPTION
⊖	DESIGNATES EXISTING ITEM	
○	CEILING FIXTURE	SEE PLANS & FIXTURE SCHEDULE
□	WALL MOUNTED FIXTURE	SEE PLANS & FIXTURE SCHEDULE
○	RECESSED FIXTURE	SEE PLANS & FIXTURE SCHEDULE E1.1.4
□	FLUORESCENT FIXTURE	SEE PLANS & FIXTURE SCHEDULE
□	FLUORESCENT STRIP	SEE PLANS & FIXTURE SCHEDULE
□	FLOOR MOUNT	SEE PLANS & FIXTURE SCHEDULE
○	FRITURE OUT 2, LOCAL SWITCH 56	SEE PLANS & FIXTURE SCHEDULE
○	ILLUMINATED EXIT SIGN	SEE PLANS
○	TANGLED FIXTURES WIRING CONNECTION	SEE PLANS
○	FRITURE PIPE AND WATTAGE	SEE PLANS
○	LOCAL SWITCH	20A - AC OULET 277V +45" MAX.
○	LOCAL SWITCH, 3-POLE	20A - AC OULET 277V +45" MAX.
○	3-WAY SWITCH	20A - AC OULET 277V +45" MAX.
○	4-WAY SWITCH	20A - AC OULET 277V +45" MAX.
○	SWITCH W/LOUT LIFE	NEON IN TOGGLE +45" MAX.
○	DIMMER SWITCH	WATTAGE AS REQUIRED +45" MAX.
○	MOTION SENSOR-WALL MTD.	20A - AC OULET 277V +45" MAX.
○	MOTION SENSOR-CEILING MTD.	WATTSTOPPER #M-1000A
○	MOTION SENSOR-CEILING MTD.	WATTSTOPPER #M-2000A
○	HALLWAY MOTION SENSOR-CEILING MTD.	WATTSTOPPER #M-2000A
○	PHOTOCELL	20A NEMA GROUNDED +15" MAX.
○	OUTLET CONVENIENCE OUTLET	20A NEMA GROUNDED +15" MAX.
○	QUANTITY CONVENIENCE OUTLET	20A NEMA GROUNDED +15" MAX.
○	WEATHERPROOF CONV. OUTLET	20A NEMA GROUNDED +15" MAX.
○	SPECIAL OUTLET	AS REQUIRED - SEE PLANS
○	GROUND FAULT INTERRUPTER	AS REQUIRED - SEE PLANS
○	UNLESS OTHERWISE NOTED	
○	FLOOR OUTLET	FITTINGS AS REQUIRED
○	JUNCTION BOX - AS REQUIRED	45 BOX & FLUSH PLATE MINIMUM
○	ELECTRICAL SWITCHBOARD	REFER TO SINGLE LINE DIAGRAM
○	WIRING UNDER FLOOR OR IN WALL	3/4" C. MINIMUM U.O.M.
○	WIRING IN CEILING	3/4" C. MINIMUM U.O.M.
○	CONDUIT RISER	3/4" C. MINIMUM U.O.M.
○	FLAME PROTECT	
○	CONDUIT STUB AND CAP	
○	NUMBER OF MARK MARKS DENOTES NUMBER OF CONDUCTORS	
○	HOSE RUN	TO RESPECTIVE PANEL OR TERN. CAB.
○	(E) CONDUIT TO REMAIN	REFER TO MECH. PLANS & SPECS.
○	EXHAUST FAN	WATTSTOPPER #A
○	MOTOR W/INTERCONNECT SWITCH	AS REQUIRED, MINIMUM 1" CONDUIT
○	SYNCHRONIX	
○	TERMINAL CABINET	
○	TELEPHONE OUTLET +15" MIN.	
○	INTERCOM HANGSET +48" MAX.	
○	INTERCOM SPEAKER +84" MAX.	
○	INTERCOM HORN	
○	SPEAKER-CEILING MOUNTED	
○	SPEAKER-WALL MOUNTED	
○	CLOCK (12)	
○	TV ANTENNA OUTLET	
○	COMPUTER/DATA OUTLET	
○	COMMUNICATION/DATA OUTLET	
○	SURFACE RACKWAY	
○	WIREMULO	
○	WIREMULO RISER	

**SCHOOL EQUIPMENT ANCHORAGE**

THE SEISMIC ANCHORAGE OF ELECTRICAL EQUIPMENT SHALL CONFORM TO C.C.R. TITLE 24, SEC. 193.0 AND TABLE 193.0-A. ANCHORAGE DETAILS FOR ROOF/FLOOR MOUNTED EQUIPMENT SHALL BE OBTAINED FROM THE DIVISION OF THE STATE ARCHITECT.

FOR FLEXIBLY MOUNTED EQUIPMENT USE 4X THE ABOVE VALUES, AND FOR SIMULTANEOUS VERTICAL FORCE - USE 1/3X HORIZONTAL FORCE.

THE ABOVE VALUES ARE FOR AN IMPORTANCE FACTOR, 1 = 1.0 AND SEISMIC ZONE, Z = 0.4 WHERE ANCHORAGE DETAILS ARE NOT SHOWN ON THE DRAWINGS, THE FIELD INSTALLER SHALL BE SUBJECT TO THE APPROVAL OF THE ELECTRICAL ENGINEER AND THE FIELD ENGINEER OF THE DIVISION OF THE STATE ARCHITECT.



**BOC Architecture**

**Bakersfield**

5500 ming orenite, suite 450, bakersfield, ca 93309  
661.836.4300  
for 661.836.4311

**San Jose**

150 south first st., suite 200  
san jose, ca 95113  
for 408.924.0844

**San Luis Obispo**

408.924.0841  
for 408.924.0841

**Oakland**

300 frank oregon park, suite 300  
oakland, california 94612  
for 510.881.0874

**Principal Architect**

James W. Graham, Electrical Engineer  
E.E. #5101  
revision:

**AGENCY TRACKING No:**

FILE No: 15-6  
OPERATIONAL STAMP  
DATE: 06-24-05

**MODERNIZATION**

FOR

**BAKERSFIELD CITY SCHOOL DISTRICT**

HENRY EISLER SCHOOL  
2901 EISLER STREET  
BAKERSFIELD, CA 93306

**ELECTRICAL SITE PLAN SYMBOL SCHEDULE, NOTES**

Version Date: 02-17-08  
job no.: 02-17-08  
date: 06/24/05  
drawn by: T.Y.A.  
chk'd by: D.P.G.  
©copyright 2003

Version Date: 02-17-08