

GENERAL NOTES

1. REFER TO ROOM FINISH SCHEDULE (SHT 45.11) FOR ADDITIONAL NOTES AND INFORMATION.
2. CONTRACTOR SHALL FIELD VERIFY CASEWORK DIMENSIONS BEFORE ORDERING NEW CASEWORK.

KEYNOTES

NOTE: KEYNOTES IN THIS LIST MAY NOT NECESSARILY OCCUR ON THIS SHEET.

- 901 BASE: REFER TO FINISH SCHEDULE.
- 902 PLUMBING FIXTURE: REFER TO PLUMBING DRAWINGS.
- 903 PROVIDE COUNTERTOP AND 6" BACKSPASH U.O.N.
- 904 PROVIDE MARKERBOARD. REFER TO DETAIL 1/A10.02.
- 905 PROVIDE BRACKET MOUNTED FIRE EXTINGUISHER.
- 906 PROVIDE D.E. BARRIER PAUL 1'-0" EITHER SIDE OF PLUMBING FIXTURE. REFER TO DETAIL 24/A10.02
- 907 (E) EASLE TO REMAIN.
- 908 PROVIDE CLOSURE PANEL WHERE EASLE REMOVED.
- 909 REFER TO DETAIL 23/A10.02
- 910 REFURBISH (E) CABINETS. REFER TO SPECS
- 911 PROVIDE TOILET PARTITION. REFER TO DETAILS 12/A10.02 & 18/A10.02.
- 912. (E) TACKBOARD TO REMAIN.
- 913. (E) PLUMBING TO REMAIN.
- 914. (E) WINDOW TO REMAIN.
- 915. (E) TOILET PARTITION TO REMAIN.
- 916. REMOVE (E) EXIST. PATCH WALL BEHIND TO MATCH (E) ADJACENT.
- 917. PATCH AND REPAIR (E) CERAMIC TILE WAINSCOT TO MATCH (E) ADJACENT.
- 918. PROVIDE WINDOWS.
- 919. WINDOW INSET. PROVIDE WALL FINISH TO MATCH (E) ADJACENT.
- 920. (E) FIRE HOPIRANT/CABINET TO REMAIN.

MATERIAL LEGEND

NOTE: ALL SYMBOLS AND PATTERNS MAY NOT NECESSARILY OCCUR ON THIS SHEET.

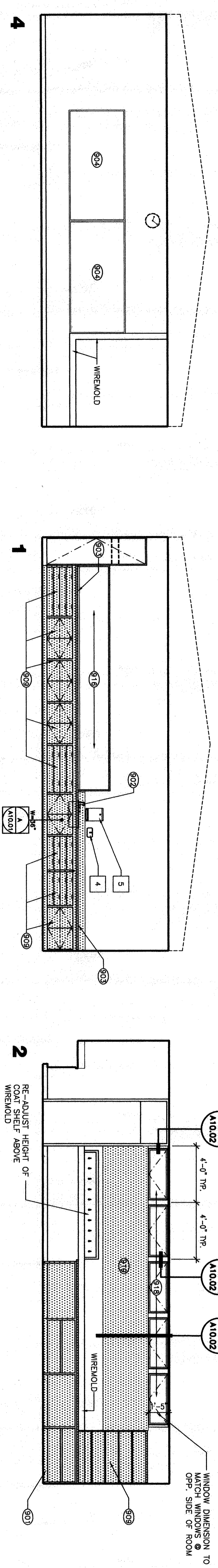
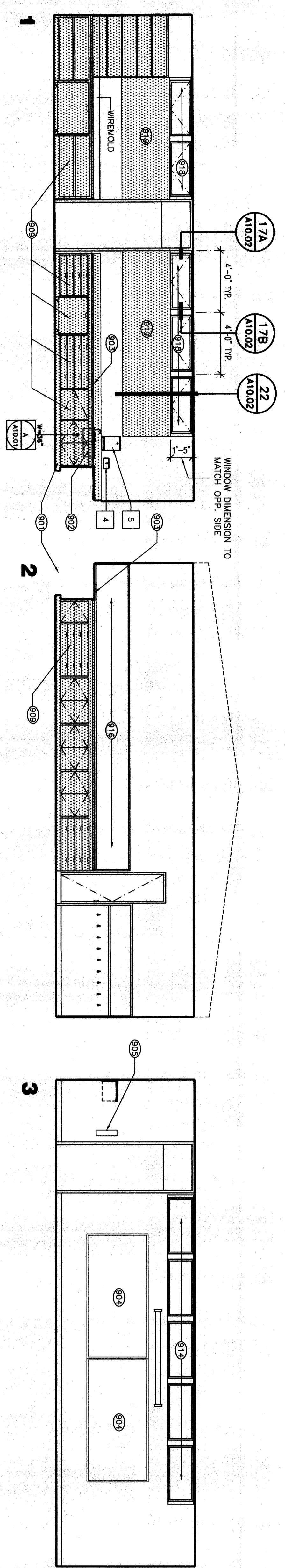
- SCOPE OF WORK
- (E) WALL FINISH EMERALD PAINT U.O.N.
- CERAMIC TILE
- GYPSUM OR PLASTER FINISH

ACCESSORY LEGEND

NOTE: ACCESSORIES IN THIS LIST MAY NOT NECESSARILY OCCUR ON THIS SHEET

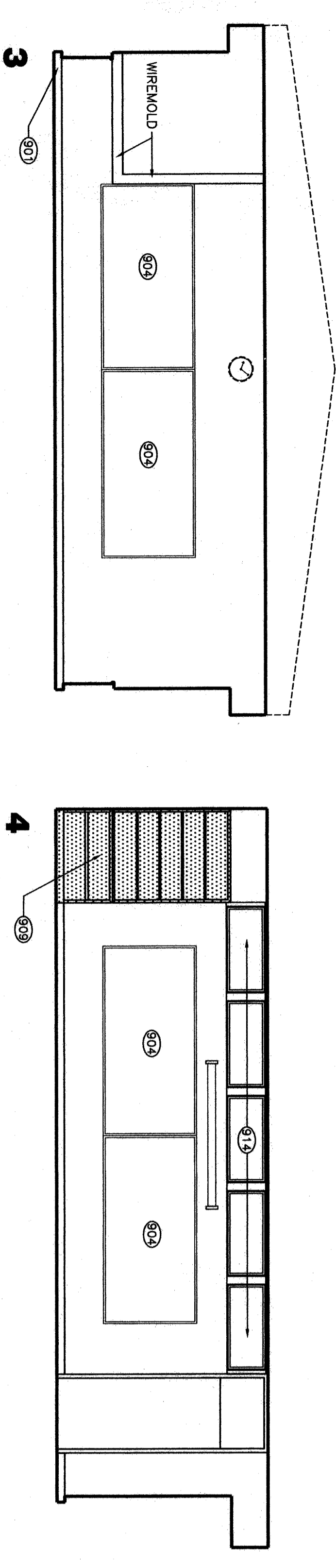
- 1 STAINLESS STEEL GRAB BAR. ATTACH PER DETAIL 11/A10.02.
- 2 SEW-RECESSED TOILET TISSUE DISPENSER. OWNER FURNISHED. CONTRACTOR INSTALLED.
- 3 STAINLESS STEEL FRAMED MIRROR WITH SHELF.
- 4 SURFACE MOUNTED LIQUID SOAP DISPENSER.
- 5 SURFACE MOUNTED PAPER TOWEL DISPENSER.
- 6 SURFACE MOUNTED TOILET-SEAT COVER DISPENSER.
- 7 SURFACE MOUNTED FRAMED MIRROR.
- 8 RECESSED FEMINE WAPIN DISPOSAL.
- 9 ELECTRIC HAND DRYER.

NOTE: REFER TO DETAILS 1/A10.02 & 4/A10.02 FOR MOUNTING HEIGHTS AND LOCATIONS

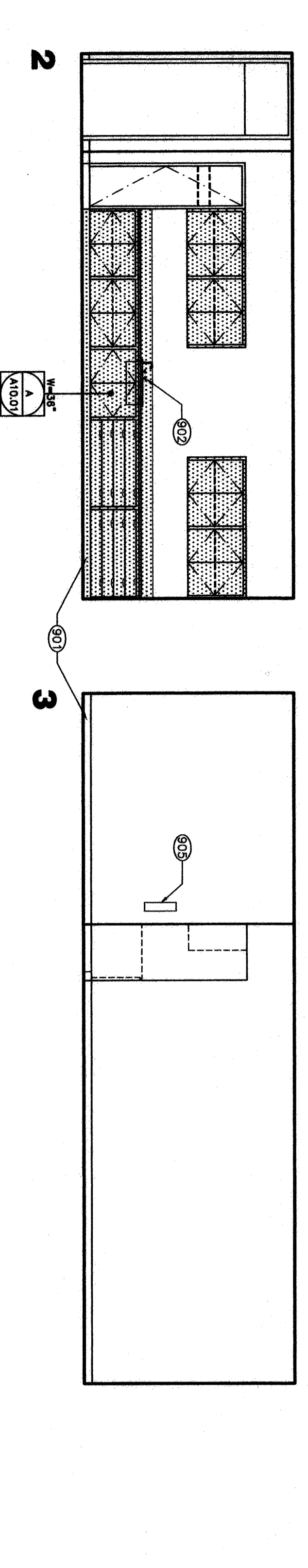


601 / 602 O.H. - CLASSROOM - TYPE 'B'

603 / 604 O.H. - CLASSROOM TYPE 'C'

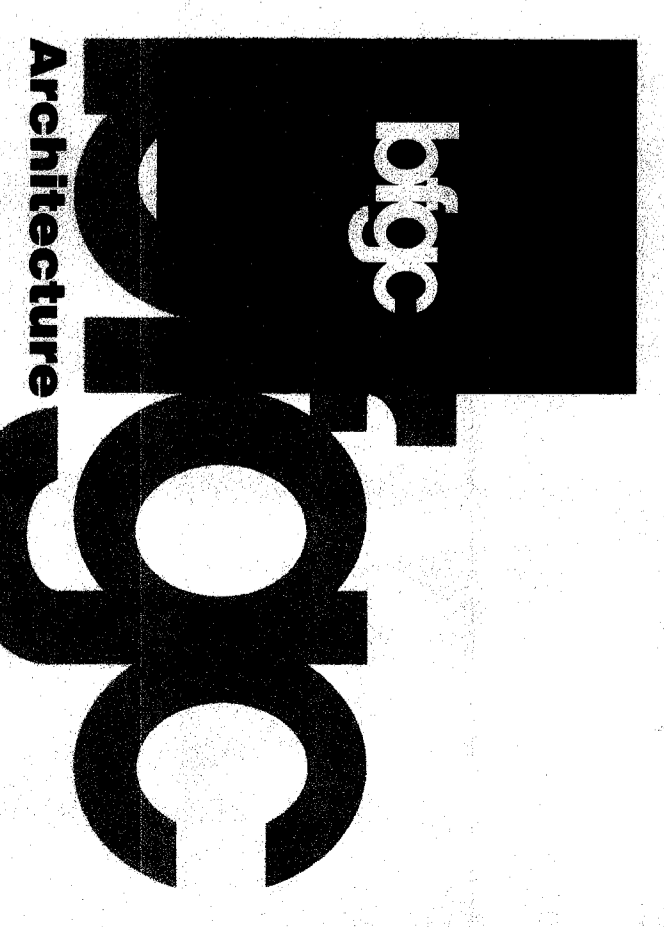
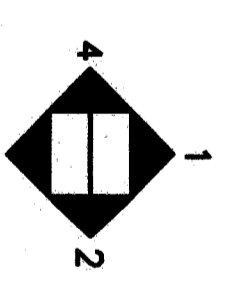
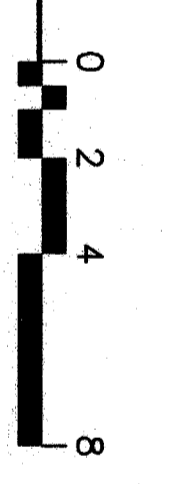


603 / 604 O.H. - CLASSROOM TYPE 'C'



605 - TEACHERS LOUNGE

BUILDING 600 INTERIOR ELEVATIONS



Bakersfield
5500
651.582.4330 oremia, suite 450, bakersfield, ca 93309
for 651.582.4311

San Jose
150 south first st., suite 200
san jose, california 95113
for 408.524.9444

San Luis Obispo
418 stuart street, suite b-6
san luis obispo, ca 93401
for 805.546.0433

Oakland
300 lathrop, suite 300
oakland, california 94612
for 510.881.0874

Principal Architects
4044 l. center rd., suite c-1024
merced, california 95341
for 209.385.4000
4000 l. center rd., suite c-1025
merced, california 95341
for 209.385.4000

FILE NO.: 15-6
OPERATION STAMP
DW. OF THE STATE ARCHITECT
APPL. NO. 01-108664
DATE 08-24-03

MODERNIZATION

FOR
HENRY ESSLER SCHOOL
2901 ESSLER STREET
BAKERSFIELD, CA 93306

BAKERSFIELD CITY
SCHOOL DISTRICT

BUILDING 600
INTERIOR
ELEVATIONS

Version Date: 02-126
Job no. 6-24-03
date 6-24-03
drawn by D.HERRERA
chk'd by REDWARDS
©copyright 2003

