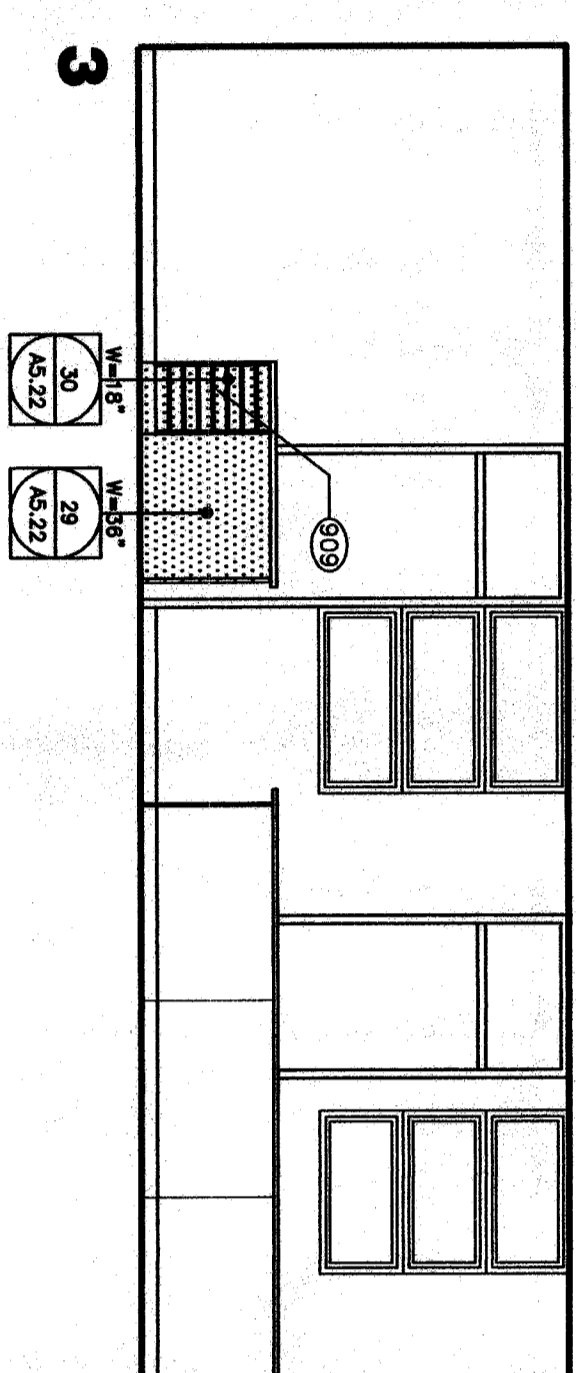
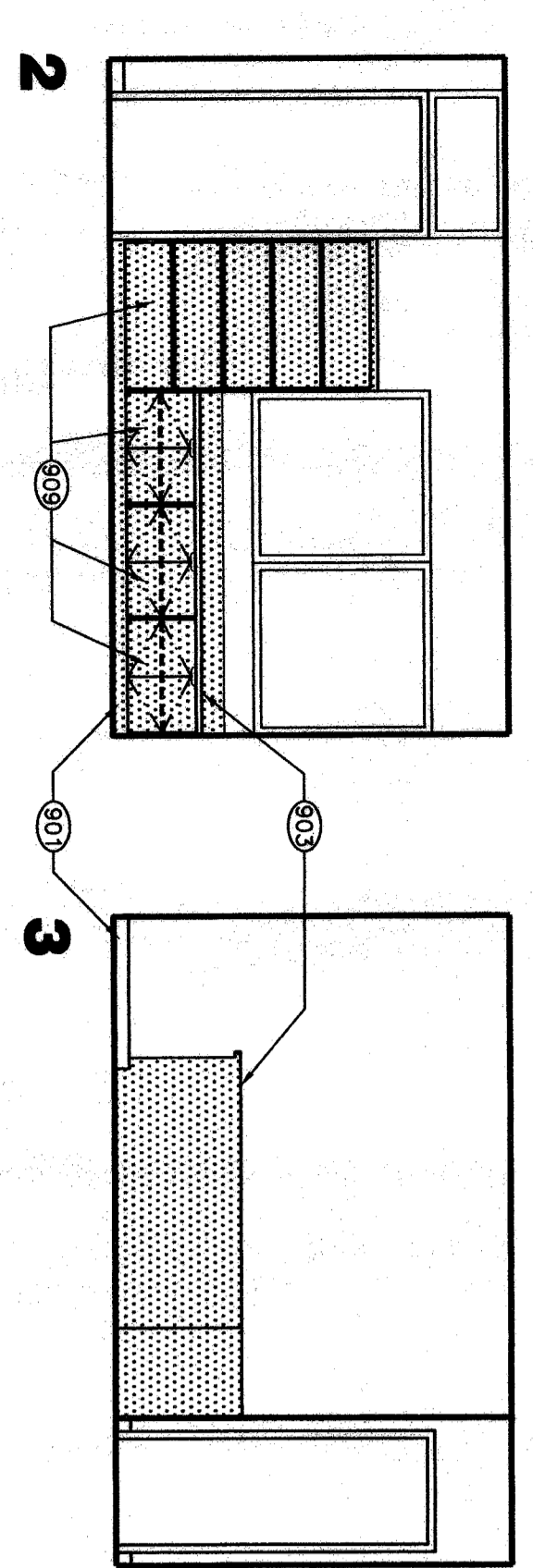


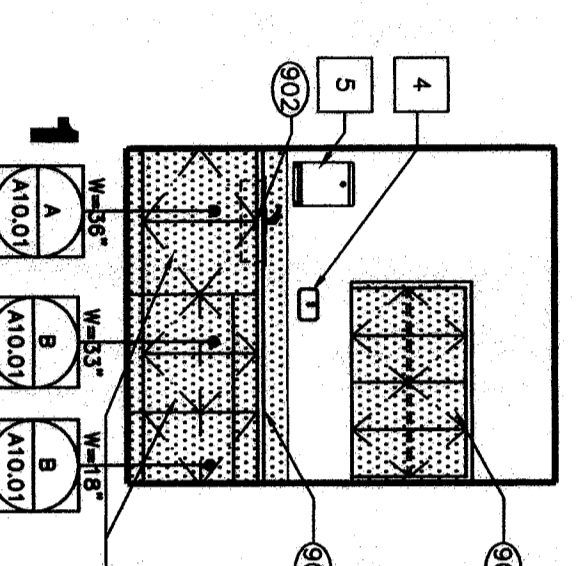
102 - SECRETARY



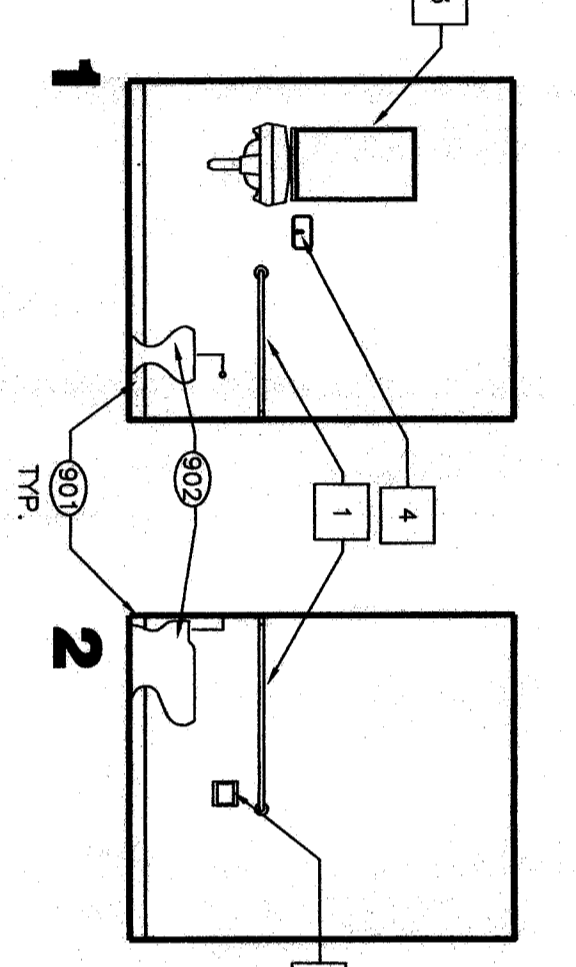
103 - PRINCIPAL



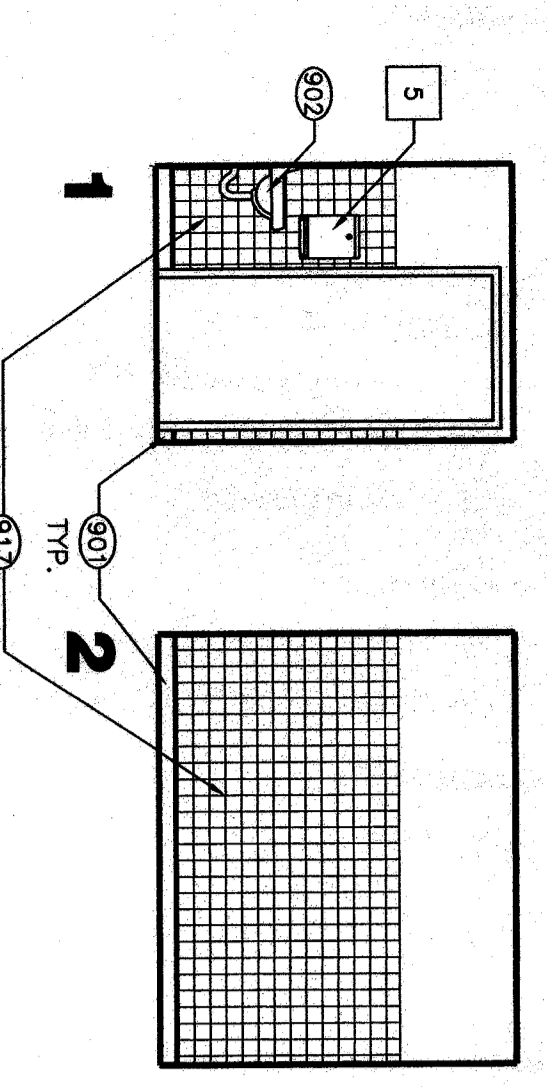
104 - COUNSELOR



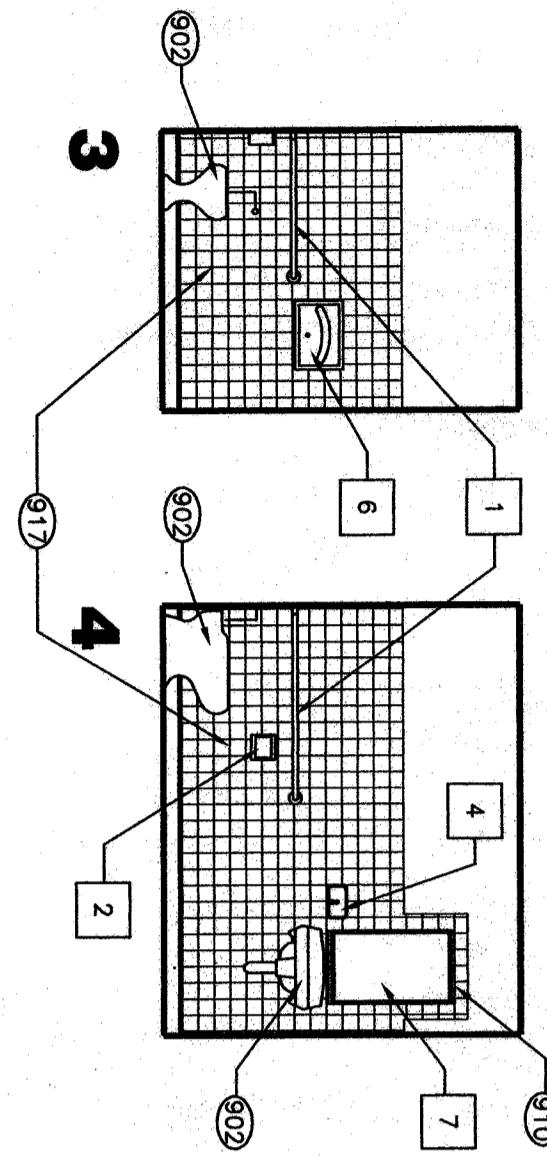
105 - NURSE



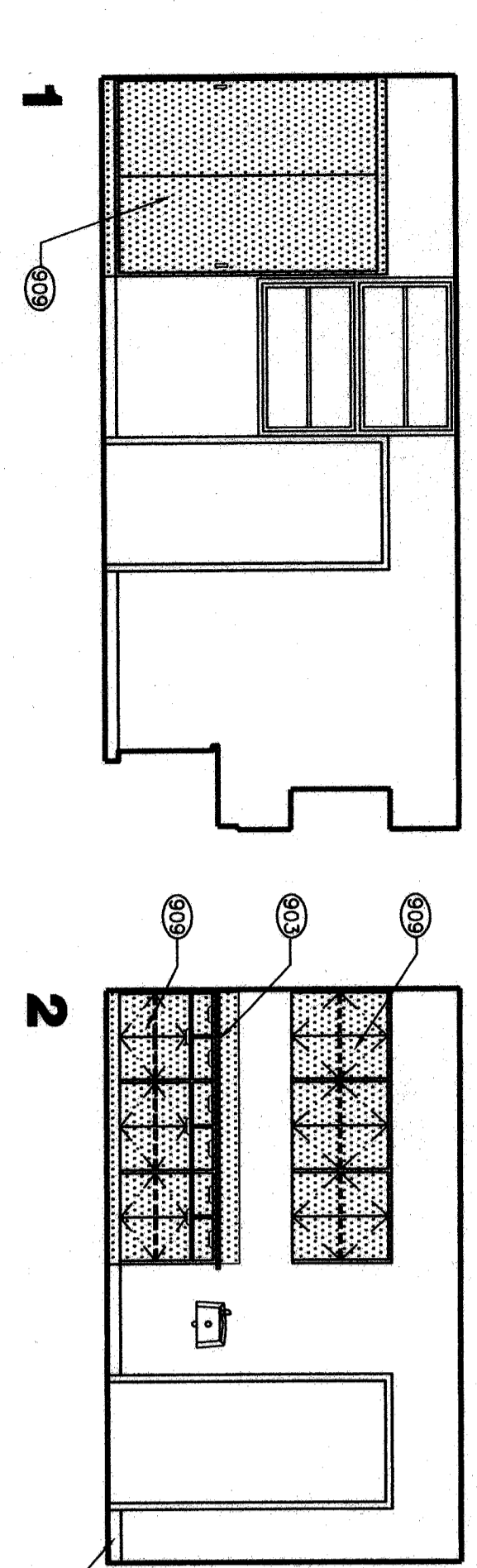
106 TOILET



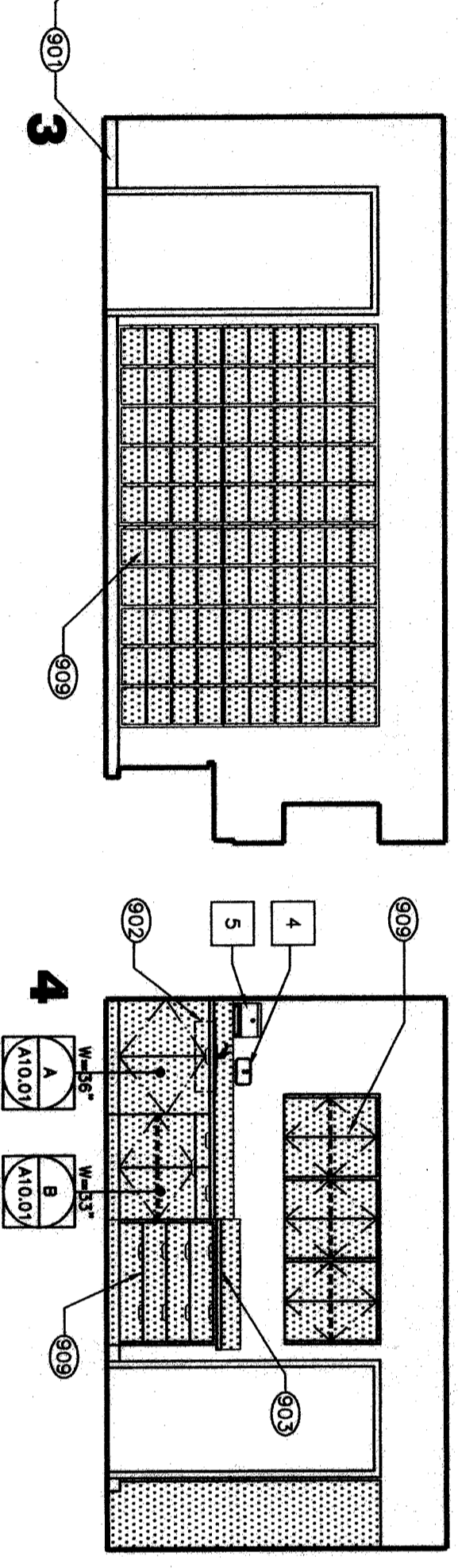
107 - MEN



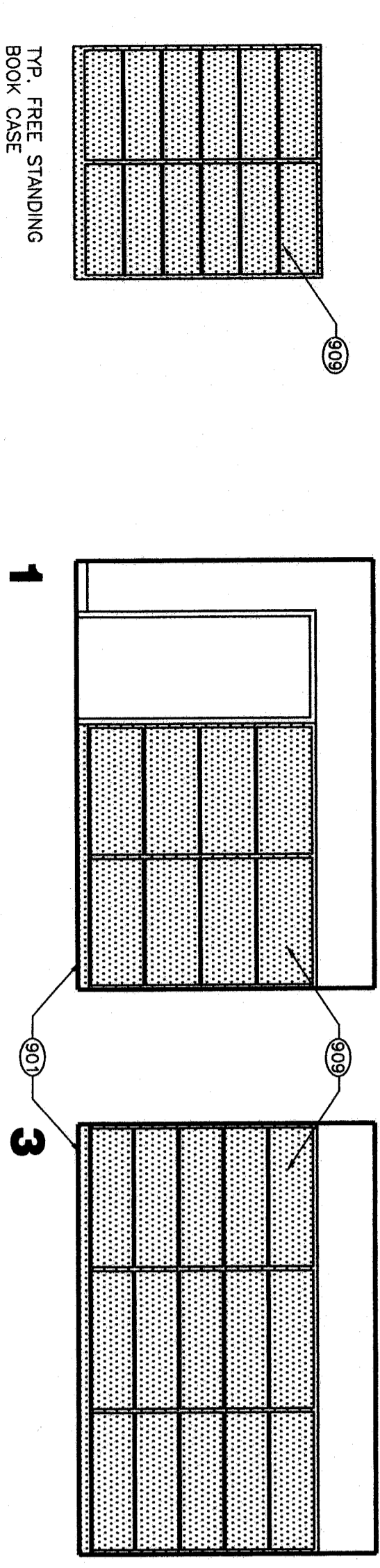
108 - WOMEN



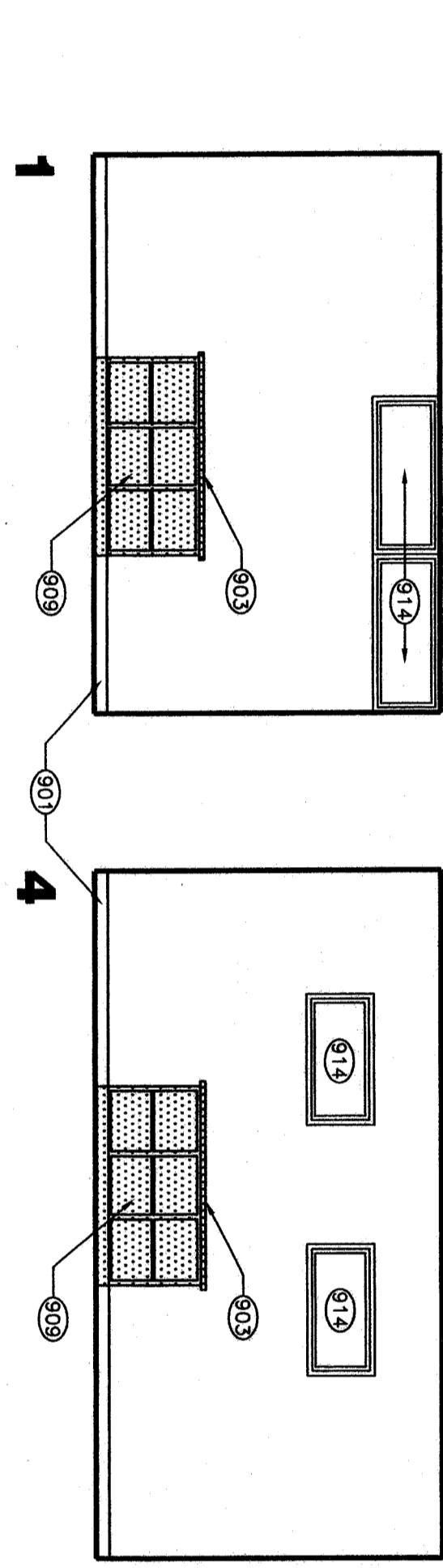
109 - FACULTY



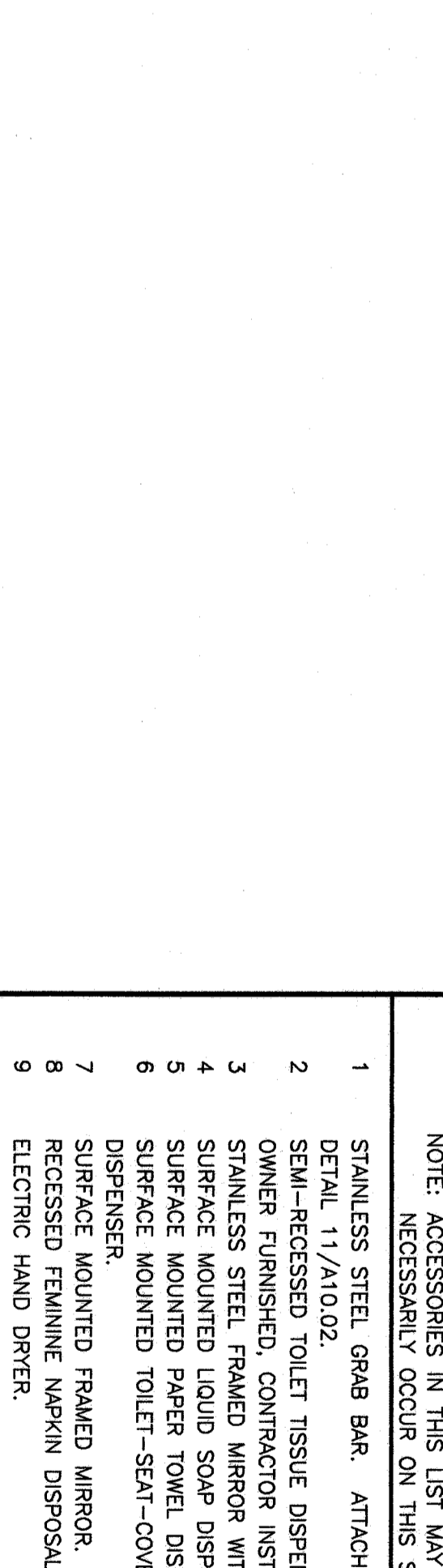
110 - BOOK & SUPPLY ROOM



110 - BOOK &



111 - VISUAL AID



112 - CONFERENCE

GENERAL NOTES

- REFER TO ROOM FINISH SCHEDULE (SHT 45.1.1) FOR ADDITIONAL NOTES AND INFORMATION.
- CONTRACTOR SHALL FIELD VERIFY CASEWORK DIMENSIONS BEFORE ORDERING NEW CASEWORK.

KEYNOTES

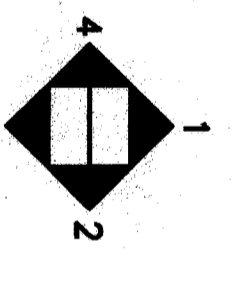
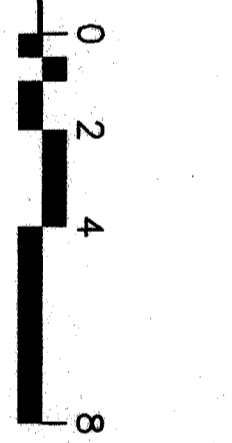
- NOTE: KEYNOTES IN THIS LIST MAY NOT NECESSARILY OCCUR ON THIS SHEET.
- 901 BASE. REFER TO FINISH SCHEDULE.
 - 902 PLUMBING FUTURE. REFER TO PLUMBING DRAWINGS.
 - 903 PROVIDE COUNTERTOP AND 6" BACKSPASH U.O.N.
 - 904 PROVIDE MARKERBOARD, PAPER, TO ORIGINAL A10.02.
 - 905 PROVIDE BRACKET MOUNTED FIRE EXTINGUISHER, 2A10BC WITH VALID CERTIFICATION ATTACHED.
 - 906 PROVIDE O.F. BARRIER RAIL, 1"-0" EITHER SIDE OF PLUMBING FUTURE. REFER TO DETAIL 24/A10.02
 - 907 (E) EASLE TO REMAIN.
 - 908 PROVIDE CLOSURE PANEL WHERE EASLE REMOVED. REFER TO DETAIL 23/A10.02
 - 909 REFURBISH (E) CABINETS. REFER TO SPECS
 - 910 PROVIDE TILE PARTITION. REFER TO DETAILS
 - 911. PROVIDE TOILET PARTITION. REFER TO DETAILS 12/A10.02 & 18/A10.02.
 - 912. (E) TAGBOARD TO REMAIN.
 - 913. (E) WINDOW TO REMAIN.
 - 914. (E) TOILET PARTITION TO REMAIN.
 - 915. (E) WINDOW TO REMAIN.
 - 916. TO MATCH (E) ADJACENT.
 - 917. PATCH AND REPAIR (E) CERAMIC TILE WAINSCOT TO MATCH (E) ADJACENT WHERE REMODEL OCCURS.
 - 918. PROVIDE WINDOWS.
 - 919. WINDOW INSET. PROVIDE WALL FINISH TO MATCH (E) ADJACENT.
 - 920. (E) FIRE HYDRANT/CABINET TO REMAIN.

MATERIAL LEGEND

- NOTE: ALL SYMBOLS AND PATTERNS MAY NOT NECESSARILY OCCUR ON THIS SHEET.
- SCOPE OF WORK
 - (E) WALL FINISH EMERALD PAINT U.O.N.
 - CERAMIC TILE
 - GRIPSUM OR PLASTER FINISH

ACCESSORY LEGEND

- NOTE: ACCESSORIES IN THIS LIST MAY NOT NECESSARILY OCCUR ON THIS SHEET.
- STAINLESS STEEL GRAB BAR. ATTACH PER DETAIL 11/A10.02
 - SEMI-RECESSED TOILET TISSUE DISPENSER, OWNER FURNISHED. CONTRACTOR INSTALLED.
 - STAINLESS STEEL FRAMED MIRROR WITH SHELF.
 - SURFACE MOUNTED LIQUID SOAP DISPENSER.
 - SURFACE MOUNTED PAPER TOWEL DISPENSER.
 - DISPENSER.
 - SURFACE MOUNTED FRAMED MIRROR.
 - RECESSED FEMINE WAPKIN DISPOSAL.
 - ELECTRIC HAND DRYER.



Bakersfield
5500 W. 7th, Bakersfield, CA 93309
914.834.5300

San Jose
150 South First St., Suite 200
San Jose, California 95113
408.281.9844

San Luis Obispo
4115 Bond Street, Suite 3-8
San Luis Obispo, CA 93401
805.464.0329
for 805.545.0094

Oakland
1500 Broadway, Suite 300
Oakland, California 94612
510.891.0514

Principal Architects
404 E. Grand Ave., Suite 410
Bakersfield, CA 93301
805.464.0329
www.p.a-arch.com
1000 N. Market, Suite C-202
Bakersfield, CA 93307

FILE NO.: 18-B
REGISTRATION STATE
DW. OF THE STATE ARCHITECT
APR. NO. 01-106693
AC: RZ, R3, R4, SS, K2
DATE: 06.25.08

MODERNIZATION

FOR
HENRY ESSLER SCHOOL
2901 ESSLER STREET
BAKERSFIELD, CA 93306

BAKERSFIELD CITY
SCHOOL DISTRICT

BUILDING 100
INTERIOR
ELEVATIONS

Version Date: 02-126
Job No. 6-24-03
Date 6-24-03
Drawn by D.HERBERA
chk'd by R.EDWARDS
©copyright 2003

Version time:
9.11