

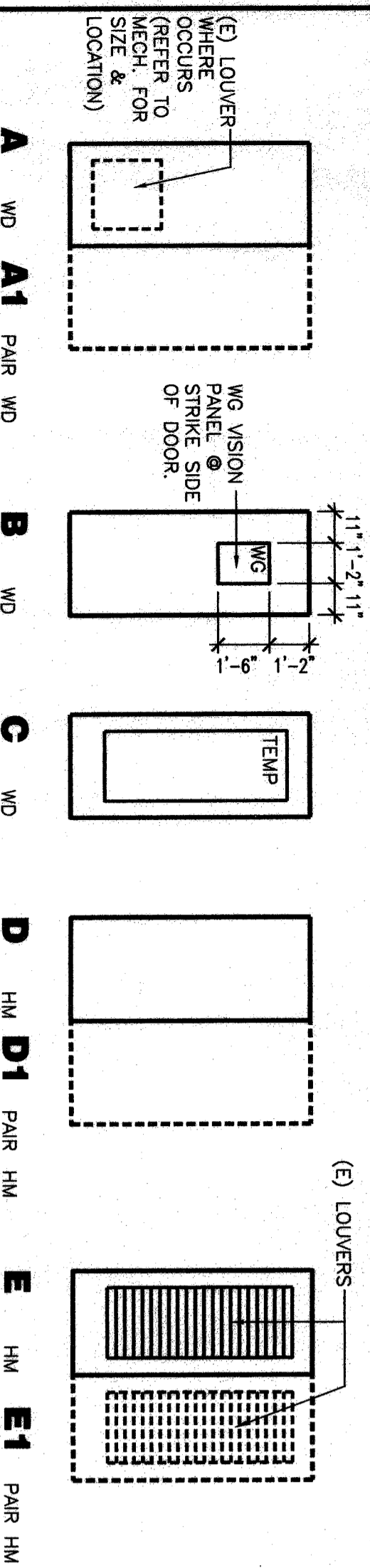
GENERAL NOTES

1. U.O.N. ALL WOODEN METAL DOOR/PANINOW FRAMES SHALL RECEIVE ENAMEL PAINT. FRAME MEMBERS ARE 2" IN WIDTH. SEE DETAILS.
2. ALL EXIST DOORS SHALL BE OBTAINABLE FROM THE INSIDE WITHOUT THE USE OF A KEY OR SPECIAL KNOWLEDGE OR EFFORT OR ABILITY TO GRASP THE OPENING HARDWARE.
3. ALL LABELED DOORS SHALL HAVE APPROPRIATE CLOSER AND HARDWARE ASSEMBLIES AS REQUIRED BY DOOR LABELING ASSEMBLY.
4. ALL RATED DOORS TO BE POSITIVE LATCHING FIRE ASSEMBLY AS DEFINED IN SECTION 713.2 C.B.C. 1997.
5. THE MAXIMUM EFFORT TO OPERATE DOORS SHALL BE AS FOLLOWS:
 - A. INTERIOR DOORS = 5 LBS
 - B. FIRE DOORS = 15 LBS (MAXIMUM)
 - C. EXTERIOR DOORS = 30 LBS (MAXIMUM)
 THE AUTHORITY HAVING JURISDICTION MAY INCREASE THE MAXIMUM EFFORT TO OPERATE THE DOORS TO ACHIEVE POSITIVE LATCHING.
6. ALL EXIST DOORS SHALL BE OBTAINABLE FROM THE INSIDE WITHOUT THE USE OF A KEY OR SPECIAL KNOWLEDGE OR EFFORT OR ABILITY TO GRASP THE OPENING HARDWARE.
7. ALL DOOR HARDWARE SHALL BE LEVER TYPE.
8. CONTRACTOR TO SUBMIT DOOR SCHEDULE TO ARCHITECT FOR APPROVAL PRIOR TO FABRICATION.
9. ALL DOORS ARE 1 3/4" THICK UNLESS OTHERWISE NOTED.
10. IN ADDITION TO THE LOCATIONS INDICATED PROVIDE TEMPERED GLASS IN THE FOLLOWING LOCATIONS:
 - A. WITHIN 24" PERIPHERY OF DOOR JAMBS
 - B. WITHIN 24" PERIPHERY OF FRAME
 - C. LOWEST EDGE IS LESS THAN 18" ABOVE FINISHED FLOOR LEVEL.
11. PATCH AND PAINT FOR HOLES WHERE HARDWARE IS INSTALLED SHALL BE THE RESPONSIBILITY OF THE CONTRACTOR.

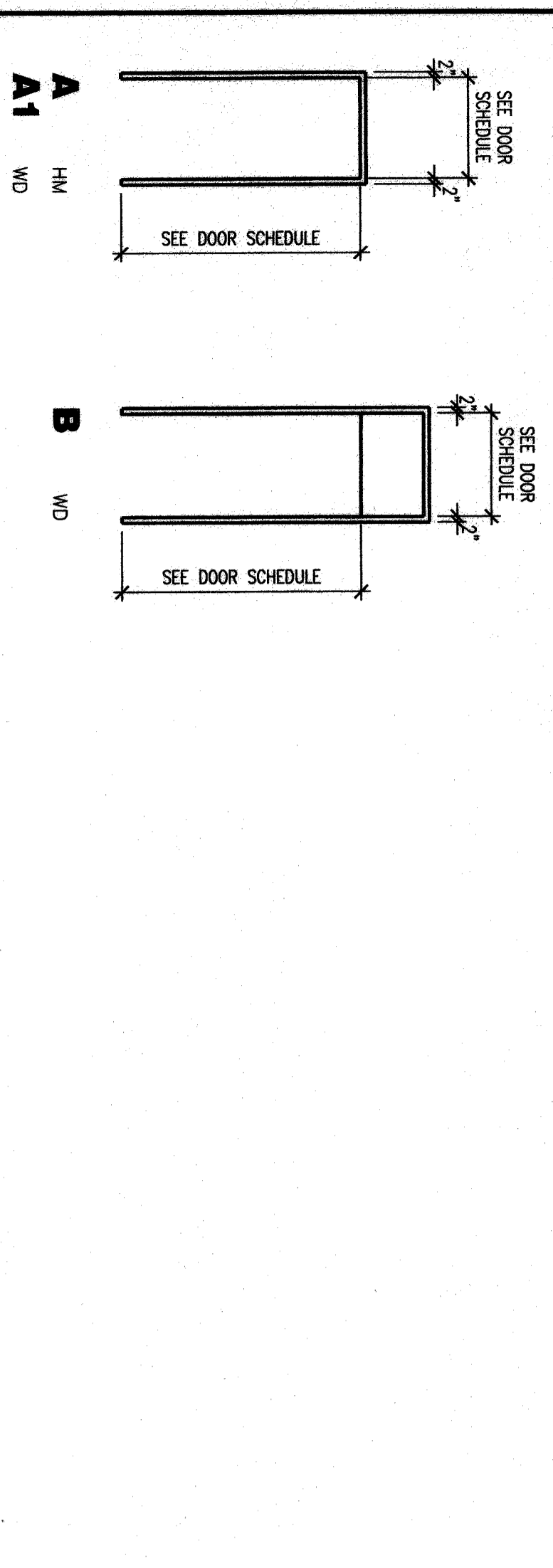
SCHEDULE REMARKS

1. CONTRACTOR SHALL FIELD VERIFY ALL DOOR SIZES PRIOR TO CONSTRUCTION.
2. REPAIR DOORS AND DOOR FRAMES.
3. (E) REFRIGERATOR DOOR.
4. (E) RATED DOORS & FRAMES SHALL BE REPLACED WITH 60 MIN. RATED DOORS & FRAMES.
5. SIGN TO READ "FIRE EXTINGUISHER INSIDE" ON THIS DOOR TO MATCH THE EXISTING RELATED SIGNS IN BLDG. 400.

DOOR TYPES



FRAME TYPES



DOOR AND FRAME SCHEDULE - BLDG. 100

NUM	TYPE	DOOR		LOUVER		TYPE	FRAME		THRSHLD	RATING	HRDWRE	PANIC	SIGN	REMARKS	NUM
		WIDTH	HEIGHT	WIDTH	HEIGHT		HINGE	HEAD							
101	A (E)	3'-0"	7'-0"			A1 (E)					5		10A/10.02	2	101
102	A (E)	3'-0"	7'-0"			A1 (E)					5		10A/10.02	2	102
103	A (E)	2'-8"	7'-0"			A1 (E)					2		10A/10.02	2	103
104	A (E)	3'-0"	7'-0"			A1 (E)					2		10A/10.02	2	104
105	A (E)	3'-0"	7'-0"			A1 (E)					2		10A/10.02	2	105
106	A (E)	3'-0"	7'-0"			A1 (E)					1		10A/10.02	2	106
107	A (E)	3'-0"	7'-0"			A1 (E)					1		10A/10.02	2	107
108	A	3'-0"	7'-0"			A1	27/A1/0.02	27/A1/0.02			7		10A/10.02	2	108
109	A	3'-0"	7'-0"			A1	13/A1/0.02	14/A1/0.02			8		10A/10.02	2	109
110	A (E)	3'-0"	7'-0"			A1 (E)					6		10A/10.02	2	110
111	A (E)	3'-0"	7'-0"			A1 (E)					5		10A/10.02	2	111
112	A (E)	3'-0"	7'-0"			A1 (E)					4		10A/10.02	2	112
113	A (E)	3'-0"	7'-0"			A1 (E)					2		10A/10.02	2	113
114	A (E)	2'-4"	7'-0"			A1 (E)					2		10A/10.02	2	114
115	A (E)	2'-4"	7'-0"			A1 (E)					2		10A/10.02	2	115
116	A (E)	2'-4"	7'-0"			A1 (E)					2		10A/10.02	2	116
117	A (E)	3'-0"	7'-0"			A1 (E)					3		10A/10.02	2	117
118	A (E)	3'-0"	7'-0"			A1 (E)					3		10A/10.02	2	118
119	A (E)	3'-0"	7'-0"			A1 (E)					3		10A/10.02	2	119
120	A (E)	3'-0"	7'-0"			A1 (E)					3		10A/10.02	2	120
121	A	3'-0"	7'-0"			A					23		10A/10.02	2	121
122	A	2'-4"	7'-0"			A					24		10A/10.02	2	122

DOOR AND FRAME SCHEDULE - BLDG. 200

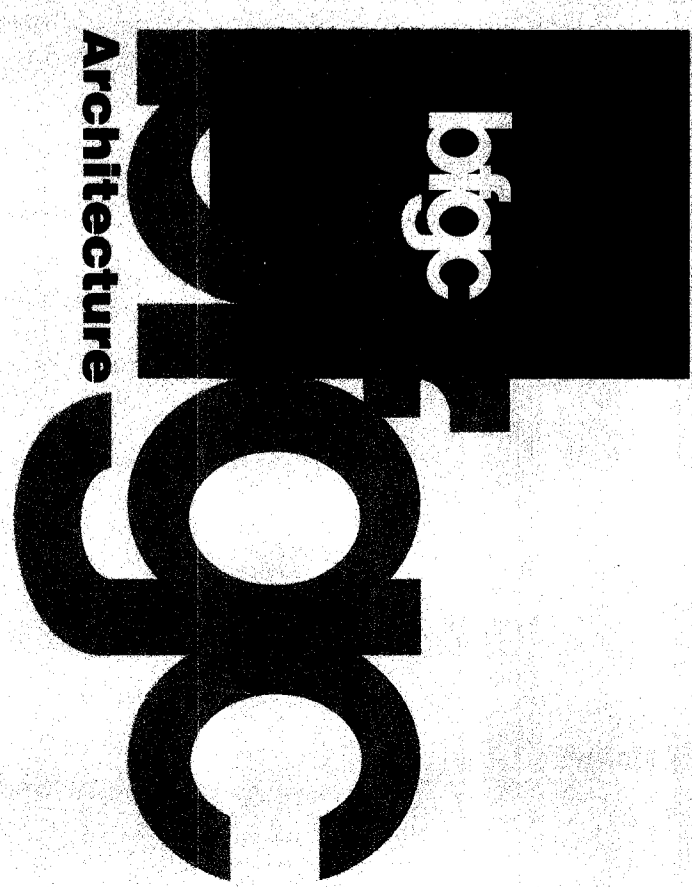
NUM	TYPE	DOOR		LOUVER		TYPE	FRAME		THRSHLD	RATING	HRDWRE	PANIC	SIGN	REMARKS	NUM
		WIDTH	HEIGHT	WIDTH	HEIGHT		HINGE	HEAD							
201	A1 (E)	5'-0"	7'-0"			A1 (E)					16		10A/10.02	2	201
202	A1 (E)	3'-0"	7'-0"			A1 (E)					16		10A/10.02	2	202
203	A (E)	3'-0"	7'-0"			A1 (E)					4		10A/10.02	2	203
204	A (E)	3'-0"	7'-0"			A1 (E)					4		10A/10.02	2	204
205	A1 (E)	5'-0"	7'-0"			A1 (E)					16		10A/10.02	2	205
206	A1 (E)	5'-0"	7'-0"			A1 (E)					16		10A/10.02	2	206
207	A (E)	3'-0"	7'-0"			A1 (E)					18		10A/10.02	2	207
208	D	3'-0"	7'-0"			A	12/A1/0.03	28/A1/0.02			25		10A/10.02	2.4	208
209	D	2'-8"	7'-0"			A	12/A1/0.03	28/A1/0.02			25		10A/10.02	2.4	209
210	D	4'-0"	7'-0"			A	12/A1/0.03	28/A1/0.02			60 MIN.		10A/10.02	2.4	210
211	A (E)	3'-0"	7'-0"			A1 (E)					18		10A/10.02	2	211
212	D	3'-0"	7'-0"			A	28/A1/0.02	28/A1/0.02			20		10A/10.02	2.4	212
213	D	3'-0"	7'-0"			A	28/A1/0.02	28/A1/0.02			20		10A/10.02	2.4	213
214	D	3'-0"	7'-0"			A	13/A1/0.03	28/A1/0.02			60 MIN.		10A/10.02	2.4	214
215	A (E)	3'-0"	7'-0"			A1 (E)					11A		10A/10.02	2	215
216	A (E)	3'-0"	7'-0"			A1 (E)					2		10A/10.02	2	216
217	A1 (E)	5'-0"	7'-0"			A1 (E)					21		10A/10.02	2	217
218	A1 (E)	5'-0"	7'-0"			A1 (E)					22		10A/10.02	2	218
219	E1 (E)	6'-0"	7'-0"			A (E)					22		10A/10.02	2	219
220	E (E)	2'-4"	7'-0"			A (E)					2		10A/10.02	2	220
221	A (E)	4'-0"	7'-0"			A1 (E)					5		10A/10.02	2	221
222	A (E)	2'-0"	7'-0"			A1 (E)					20		10A/10.02	2	222
223	A (E)	2'-0"	7'-0"			A1 (E)					9A		10A/10.02	2	223
224	A (E)	3'-0"	7'-0"			A1 (E)					11		10A/10.02	2	224
225	--	3'-0"	7'-0"			A1 (E)					7		10A/10.02	2.3	225
226	A (E)	3'-0"	7'-0"			A1 (E)					7		10A/10.02	2	226
227	A (E)	3'-9"	7'-0"			A1 (E)					15		10A/10.02	2	227
228	A	3'-0"	7'-0"			A1					--		10A/10.02	--	228

DOOR AND FRAME SCHEDULE - BLDG. 300

NUM	TYPE	DOOR		LOUVER		TYPE	FRAME		THRSHLD	RATING	HRDWRE	PANIC	SIGN	REMARKS	NUM
		WIDTH	HEIGHT	WIDTH	HEIGHT		HINGE	HEAD							
301	A	3'-0"	7'-0"			B	28/A1/0.02	28/A1/0.02			27		10A/10.02	2	301
302	A (E)	3'-0"	7'-0"			B (E)	28/A1/0.02	28/A1/0.02			5A		10A/10.02	2	302
303	A	3'-0"	7'-0"			B	28/A1/0.02	28/A1/0.02			27		10A/10.02	2	303
304	B	3'-0"	7'-0"			A	12/A1/0.03	28/A1/0.02			12		7/A1/0.02	--	304
305	B	3'-0"	7'-0"			A	30/A1/0.02	27/A1/0.02			28		10A/10.02	2	305
306	A (E)	3'-0"	7'-0"			A1 (E)					2		10A/10.02	2	306
307	A (E)	3'-0"	7'-0"			A1 (E)					2		10A/10.02	2	307
308	A (E)	3'-0"	7'-0"			A1 (E)					13		10A/10.02	2	308
309	A (E)	2'-6"	7'-0"			A1 (E)					9A		10A/10.02	2	309
310	A (E)	3'-0"	7'-0"			A1 (E)					28		10A/10.02	2	310
311	B	3'-0"	7'-0"			A	30/A1/0.02	27/A1/0.02			2		10A/10.02	2	311
312	B	3'-0"	7'-0"			A	12/A1/0.03	28/A1/0.02			12		7/A1/0.02	--	312
313	A	3'-0"	7'-0"			B (E)	28/A1/0.02	28/A1/0.02			27		10A/10.02	2	313
314	A (E)	3'-0"	7'-0"			B (E)					5A		10A/10.02	2	314
315	A1 (E)	6'-0"	7'-0"			A1 (E)					2		10A/10.02	2	315
316	A	3'-0"	7'-0"			B (E)	28/A1/0.02	28/A1/0.02			27		10A/10.02	2	316

DOOR AND FRAME SCHEDULE - BLDG. 400

NUM	TYPE	DOOR		LOUVER		TYPE	FRAME		THRSHLD	RATING	HRDWRE	PANIC	SIGN	REMARKS	NUM
		WIDTH	HEIGHT	WIDTH	HEIGHT		HINGE	HEAD							
401	A (E)	3'-0"	7'-0"			B (E)					5		10A/10.02	--	401
402	A (E)	3'-0"	7'-0"			B (E)					5		10A/10.02	2	402
403	A (E)	3'-0"	7'-0"			B (E)					5		10A/10.02	2	403
404	A (E)	3'-0"	7'-0"			B (E)					5A		10A/10.02	2	404
405	A (E)	3'-0"	7'-0"			B (E)					5A		10A/10.02	2	405
406	A (E)	3'-0"	7'-0"			B (E)					5A		10A/10.02	2	406
407	A (E)	3'-0"	7'-0"			B (E)					5A		10A/10.02	2	407
408	A (E)	3'-0"	7'-0"			B (E)					5A		10A/10.02	2	408
409	A (E)	3'-0"	7'-0"			A1 (E)					5A		10A/10.02	2	409
410	A (E)	3'-0"	7'-0"			B (E)					5A		10A/10.02	2	410
411	A (E)	3'-0"	7'-0"			B (E)					5A		10A/10.02	2	411
412	A (E)	3'-0"	7'-0"			A1 (E)					5A		10A/10.02	2	412
413	A (E)	3'-0"	7'-0"			B (E)					5A		10A/10.02	2	413
414	A (E)	3'-0"	7'-0"			A1 (E)					5A		10A/10.02	2	414
415	A (E)	3'-0"	7'-0"			B (E)					5A		10A/10.02	2	415
416	A (E)	3'-0"	7'-0"			A1 (E)					--		10A/10.02	2	416
417	A (E)	3'-0"	7'-0"			B (E)					5A		10A/10.02	2	417
418	A (E)	3'-0"	7'-0"			A1 (E)					--		10A/10.02	2	418
419	A (E)	3'-0"	7'-0"			B (E)					14		10A/10.02	2	419
420	A (E)	3'-0"	7'-0"			A1 (E)					14		10A/10.02	2	420
421	A (E)	2'-4"	7'-0"			A1 (E)					9A		10A/10.02	2	421
422	A (E)	2'-4"	7'-0"			A1 (E)					9A		10A/10.02	2	422



Bakersfield
5500 7th Ave, Suite 400, Bakersfield, CA 93309
Tel: 805.835.1530 Fax: 805.835.1531

San Jose