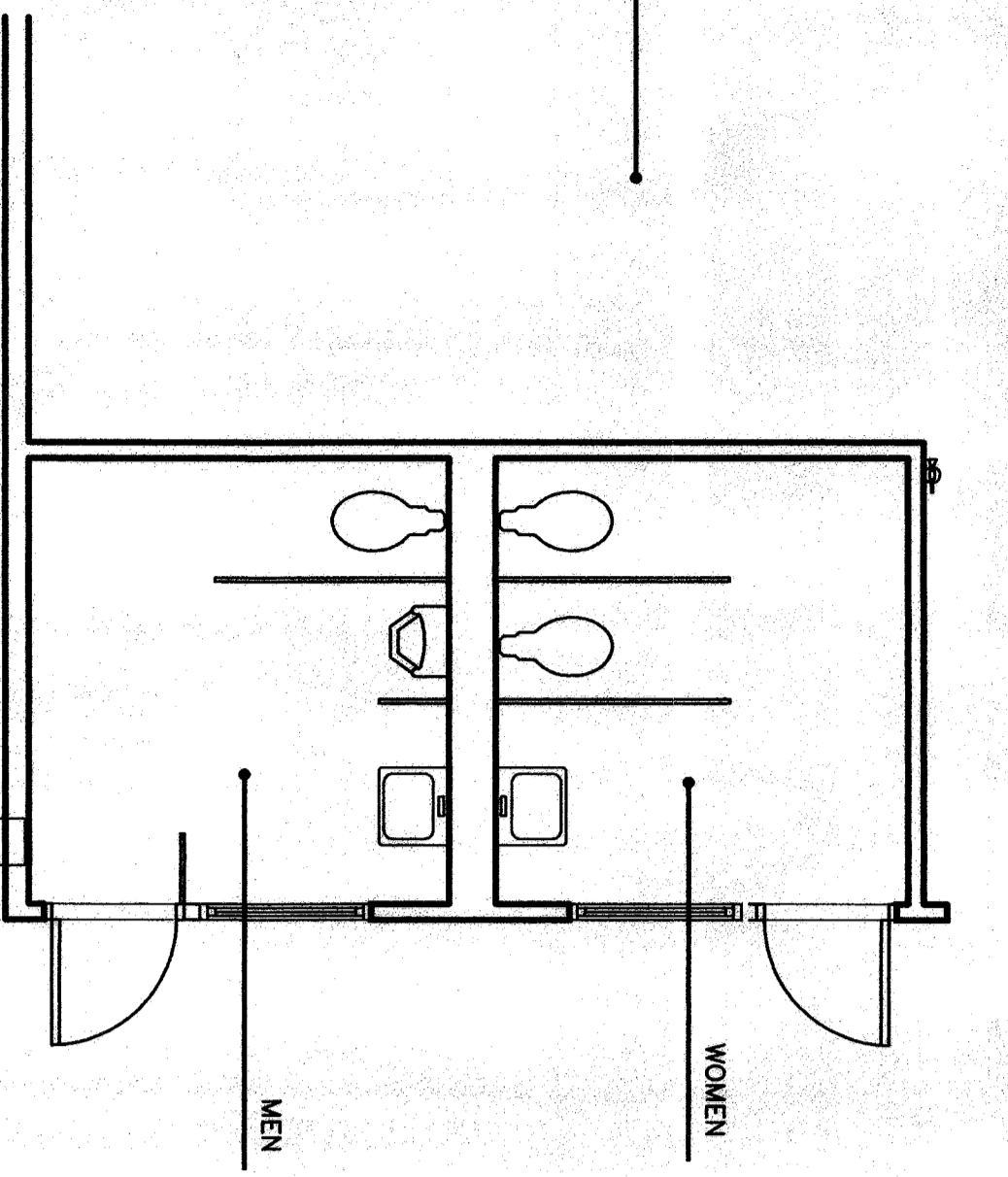
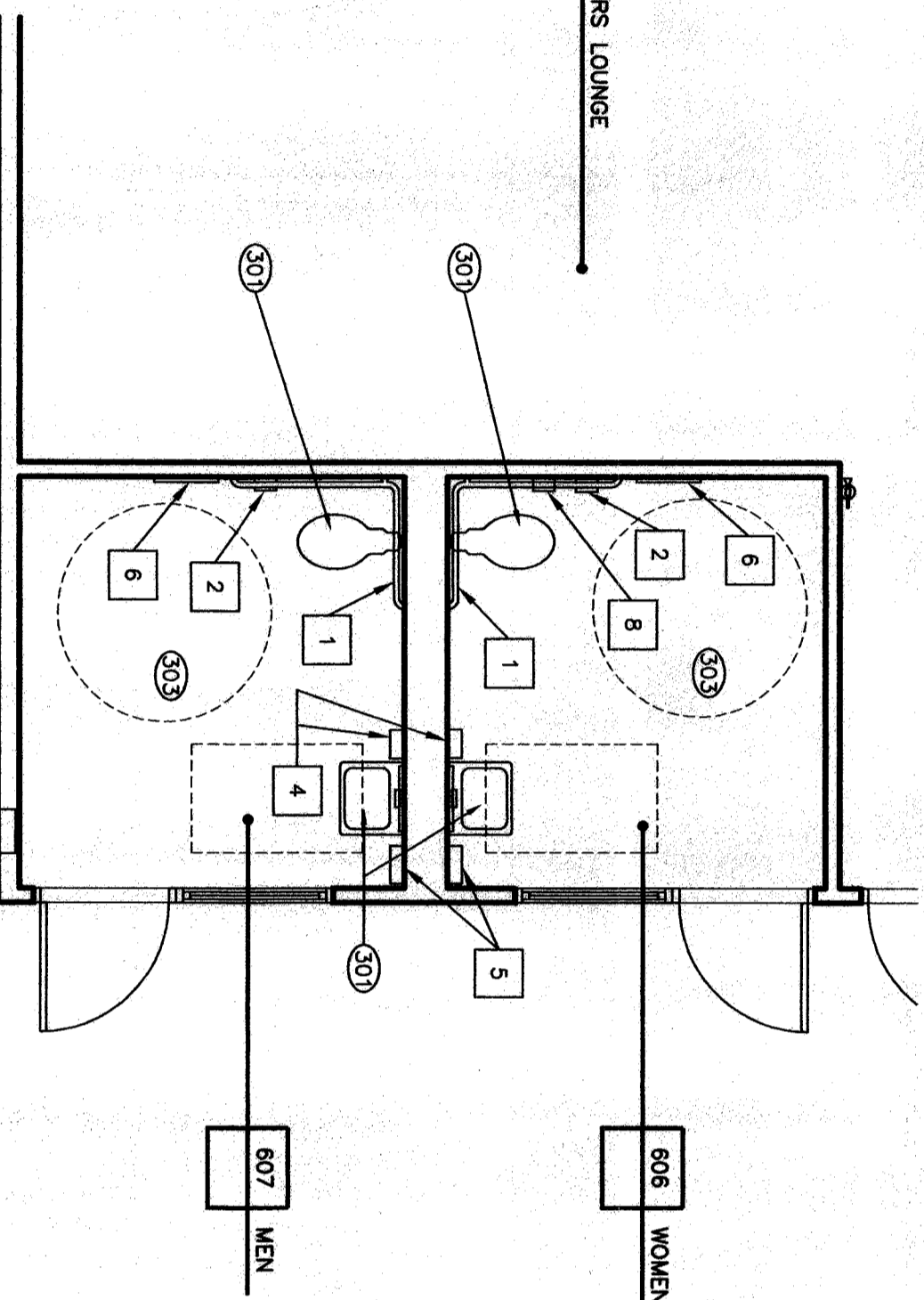


TEACHERS LOUNGE



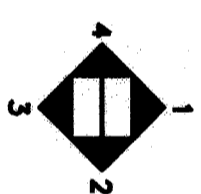
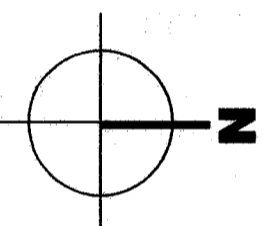
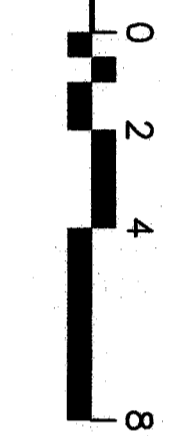
REFERENCE PLAN

605 TEACHERS LOUNGE



FLOOR PLAN

4 BUILDING 600



**KEYNOTES**

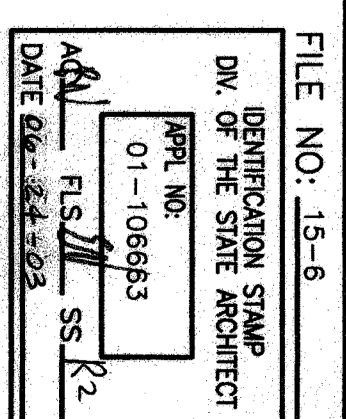
- NOTE: KEYNOTES IN THIS LIST MAY NOT NECESSARILY OCCUR ON THIS SHEET.
- 301 PROVIDE PLUMBING FIXTURE. REFER TO PLUMBING DRAWINGS.
  - 302 PROVIDE DRINKING FOUNTAIN BARRIER RAIL.
  - 303 REFER TO DETAIL 24/A10.02 FLOOR TO MATCH (E) ADJACENT WHERE REMODEL OCCURS.
  - 304 PROVIDE WHEELCHAIR LIFT WITH 42" HIGH DATE.
  - 305 REPLACE PLUMBING FIXTURE TO REMAIN.
  - 306 REFER TO 15/A3.11 FOR DIMENSIONS.
  - 307 PROVIDE INTERNATIONAL SYMBOL OF ACCESSIBILITY SIGNAGE. REFER TO 15/A3.11 FOR DIMENSIONS.
  - 308 PROVIDE SIGNAGE WITH THE CAPACITY OF THE LEFT CASE OF EMERGENCY.
  - 309 PROVIDE SIGNAGE WITH THE TELEPHONE NUMBER TO CALL IN CASE OF EMERGENCY.

**PLAN LEGEND**

- NOTE: ALL SYMBOLS AND PATTERNS MAY NOT NECESSARILY OCCUR ON THIS SHEET.
- 2x STUD WALL / INFILL WALL. SEE KEYNOTES FOR CONSTRUCTION INFORMATION. (REFER TO SHT. A10.01 FOR WALL TYPES)
  - 60-INCH ACCESSIBLE FLOOR SPACE LOCATION
  - 32-INCH X 48-INCH ACCESSIBLE FLOOR SPACE LOCATION

**ACCESSORY LEGEND**

- NOTE: ACCESSORIES IN THIS LIST MAY NOT NECESSARILY OCCUR ON THIS SHEET.
- 1 STAINLESS STEEL GRAB BAR. ATTACH PER DETAIL 11/A10.02.
  - 2 SEMI-RECESSED TOILET TISSUE DISPENSER (REFER TO 9/308.04 FOR OWNER FURNISHED CONTRACTOR INSTALLED).
  - 3 STAINLESS STEEL FRAMED MIRROR WITH SHELF.
  - 4 SURFACE MOUNTED PAPER TOWEL DISPENSER.
  - 5 SURFACE MOUNTED TOILET-SEAT COVER DISPENSER.
  - 6 SURFACE MOUNTED PAPER TOWEL DISPENSER.
  - 7 SURFACE MOUNTED FRAMED MIRROR.
  - 8 RECESSED FEMININE NAPKIN DISPOSAL.
  - 9 ELECTRIC HAND DRYER.



**MODERNIZATION**

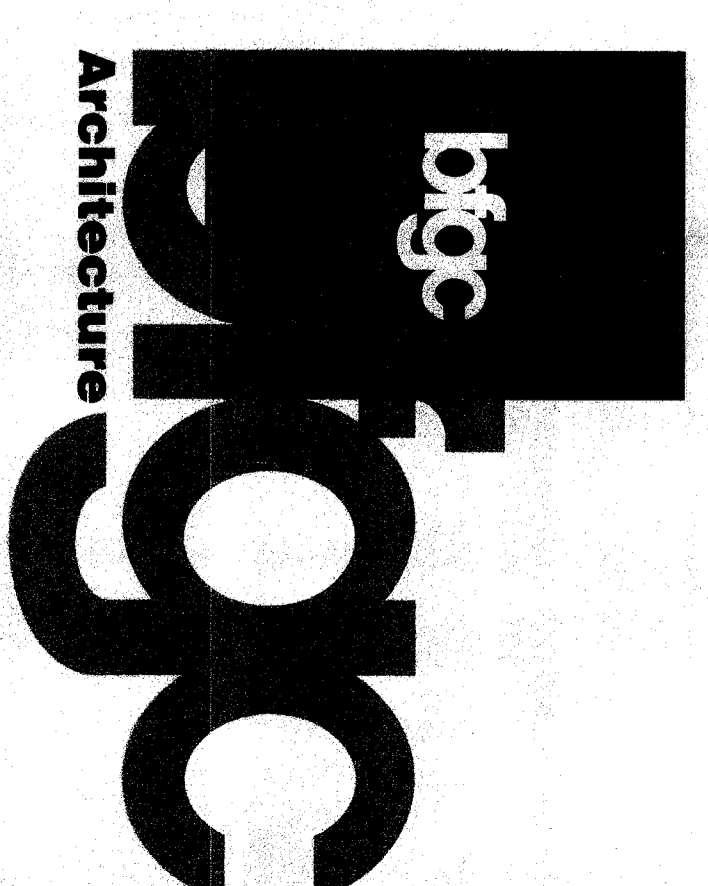
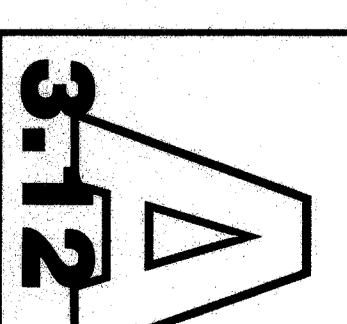
FOR

HENRY ESSLER SCHOOL  
2901 ESSLER STREET  
BAKERSFIELD, CA 93306

BAKERSFIELD CITY  
SCHOOL DISTRICT

**PARTIAL FLOOR PLANS**

Version Date	02-1-03
Job no.	02-1-03
date	6-24-03
drawn by	D.HERRERA
chk'd by	REDMONDS
©copyright	2003



**Bakerfield**

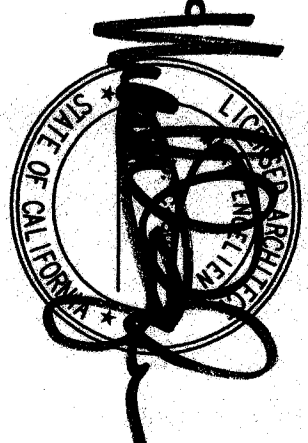
5900 Olive Avenue, Suite 450, Bakersfield, CA 93309  
861.836.4320 fax 861.836.4311

**San Jose**

150 South First St., Suite 200  
San Jose, CA 95113  
tel 408.274.0844 fax 408.274.0844

**San Luis Obispo**

1000 Broadway, Suite 200  
San Luis Obispo, CA 93401  
tel 805.546.0133 fax 805.546.0134



**Oakland**

200 Park Street, Suite 300  
Oakland, California 94612  
tel 510.881.0174 fax 510.881.0174

**Principal Architects**

David L. Gorman, AIA, C-1102  
Mark A. Williams, AIA, C-2003  
John J. Redmond, AIA, C-1001  
1900 Broadway, Suite 200  
San Luis Obispo, CA 93401  
tel 805.546.0133 fax 805.546.0134

**San Jose**

150 South First St., Suite 200  
San Jose, CA 95113  
tel 408.274.0844 fax 408.274.0844

**San Luis Obispo**

1000 Broadway, Suite 200  
San Luis Obispo, CA 93401  
tel 805.546.0133 fax 805.546.0134

**Oakland**

200 Park Street, Suite 300  
Oakland, California 94612  
tel 510.881.0174 fax 510.881.0174