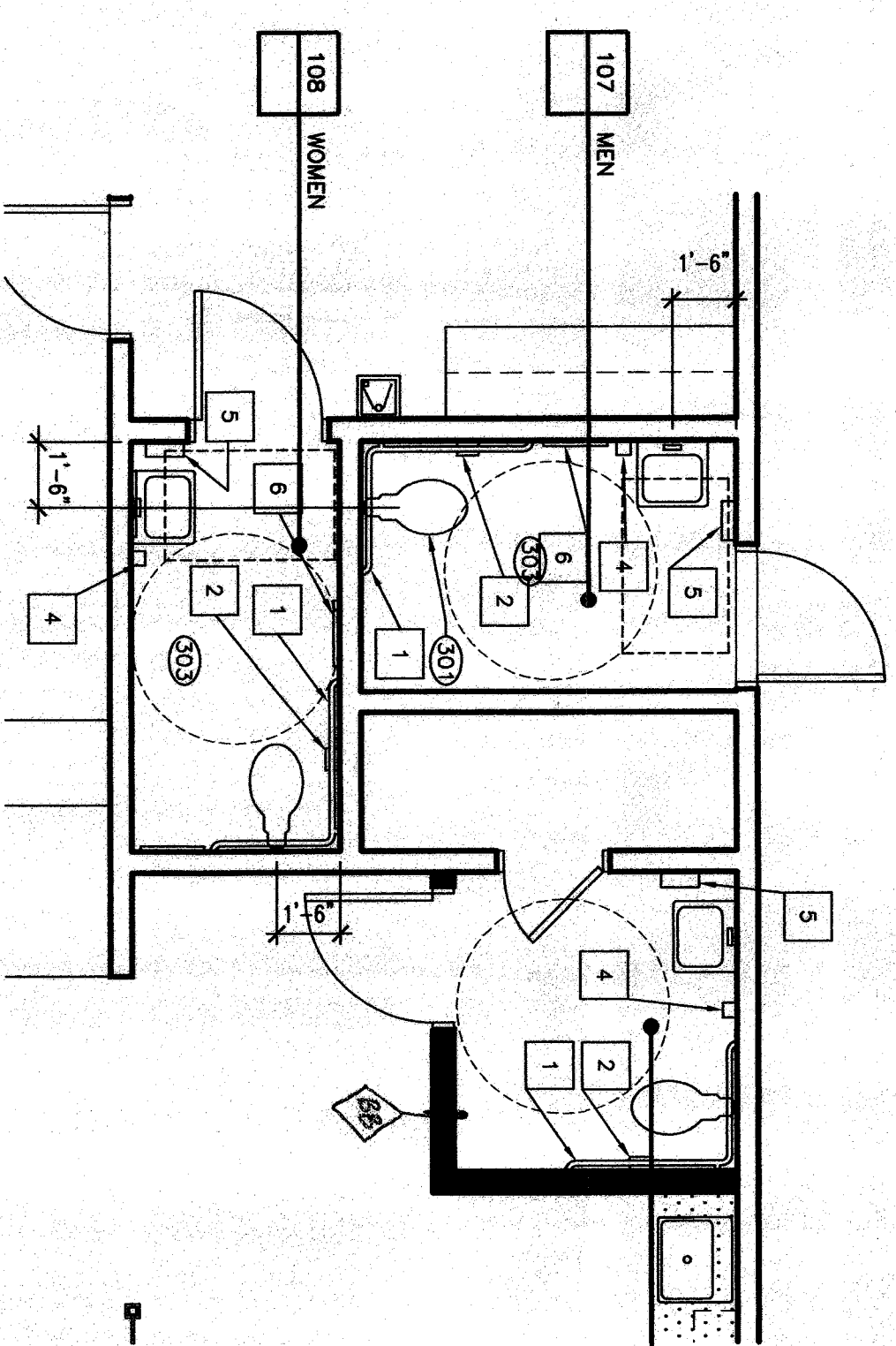
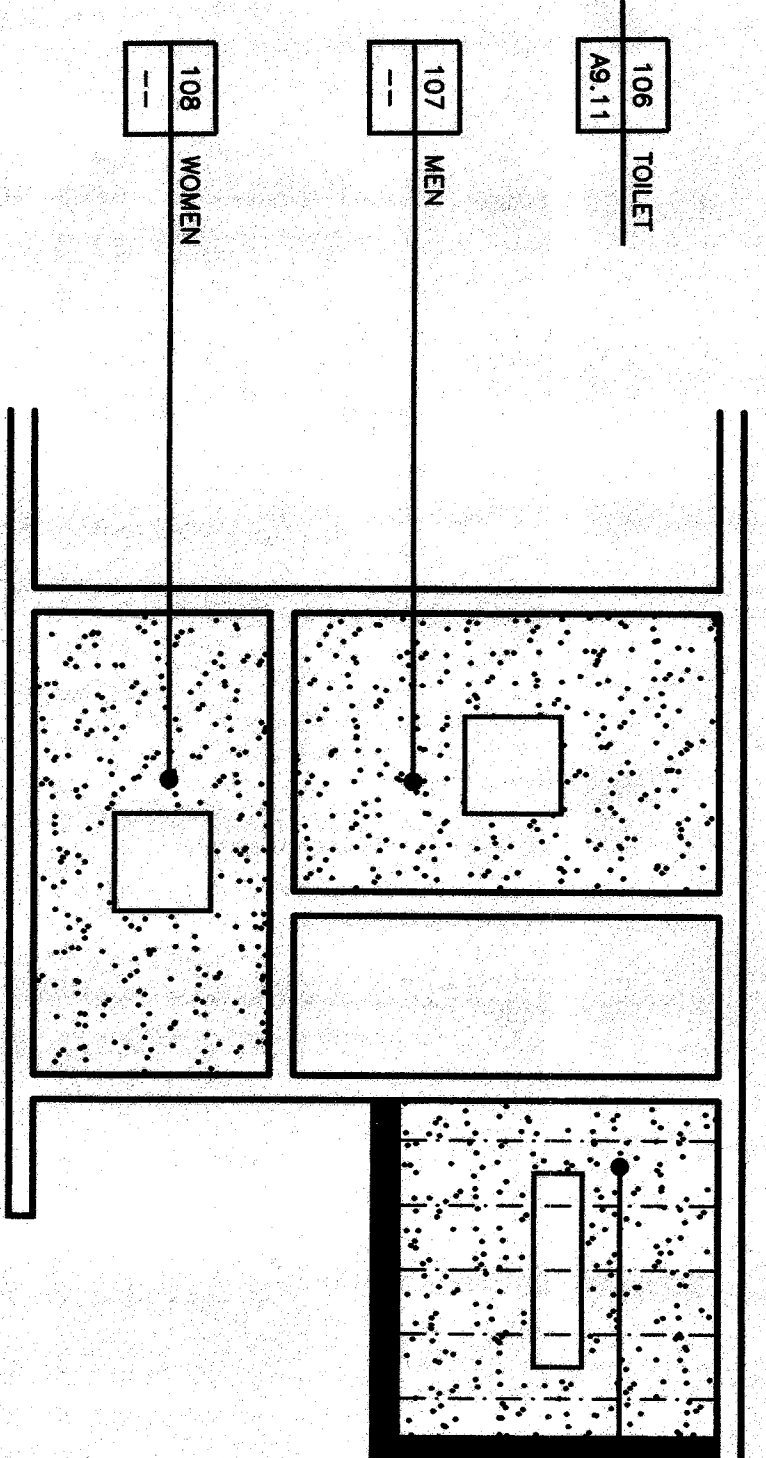


REFERENCE PLAN

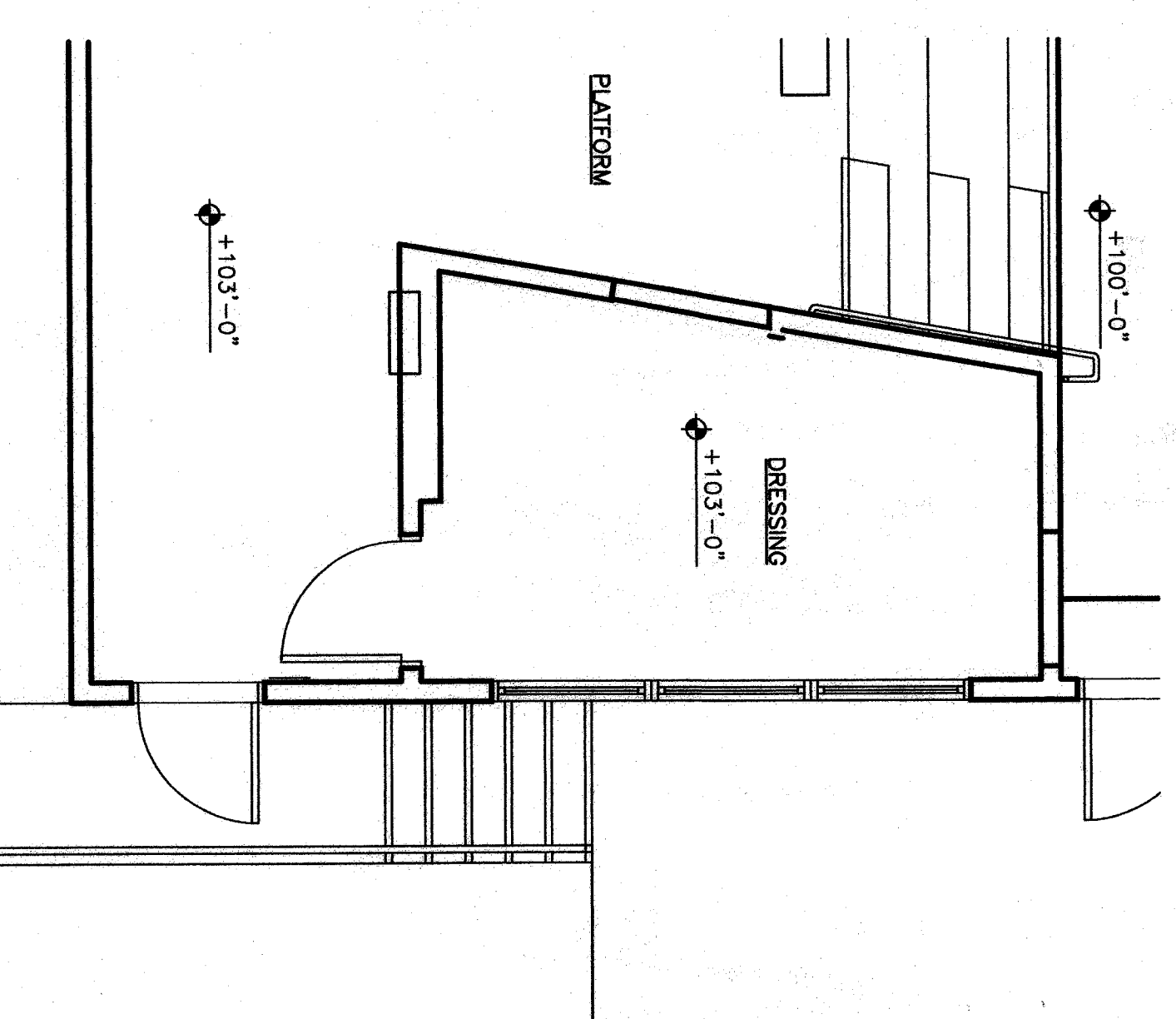
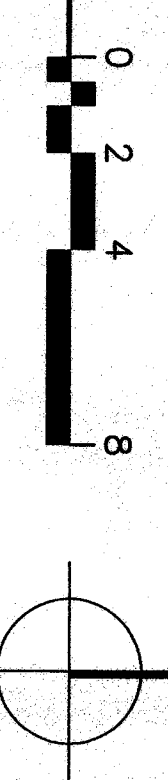


FLOOR PLAN

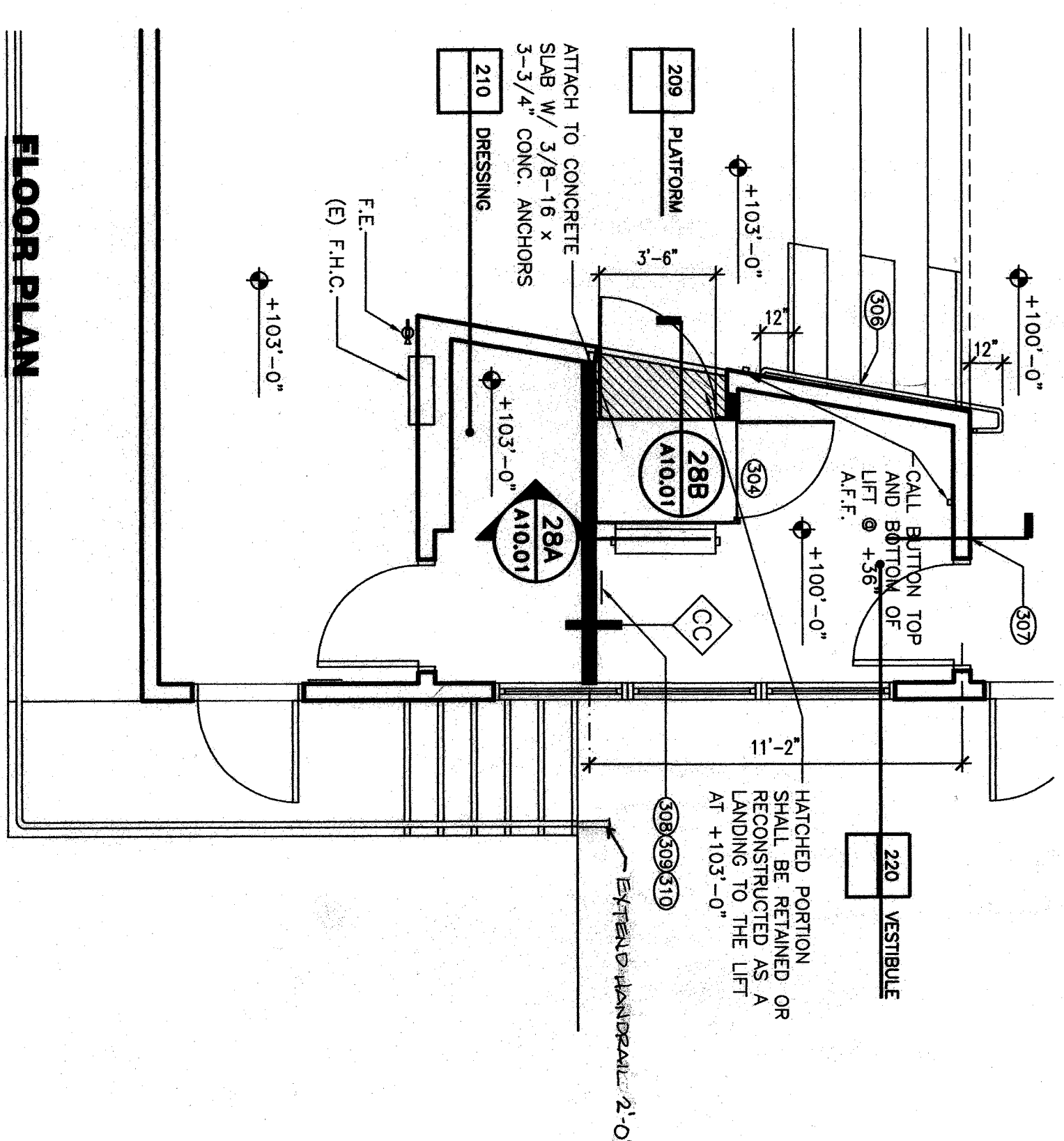


REFLECTED CEILING PLAN

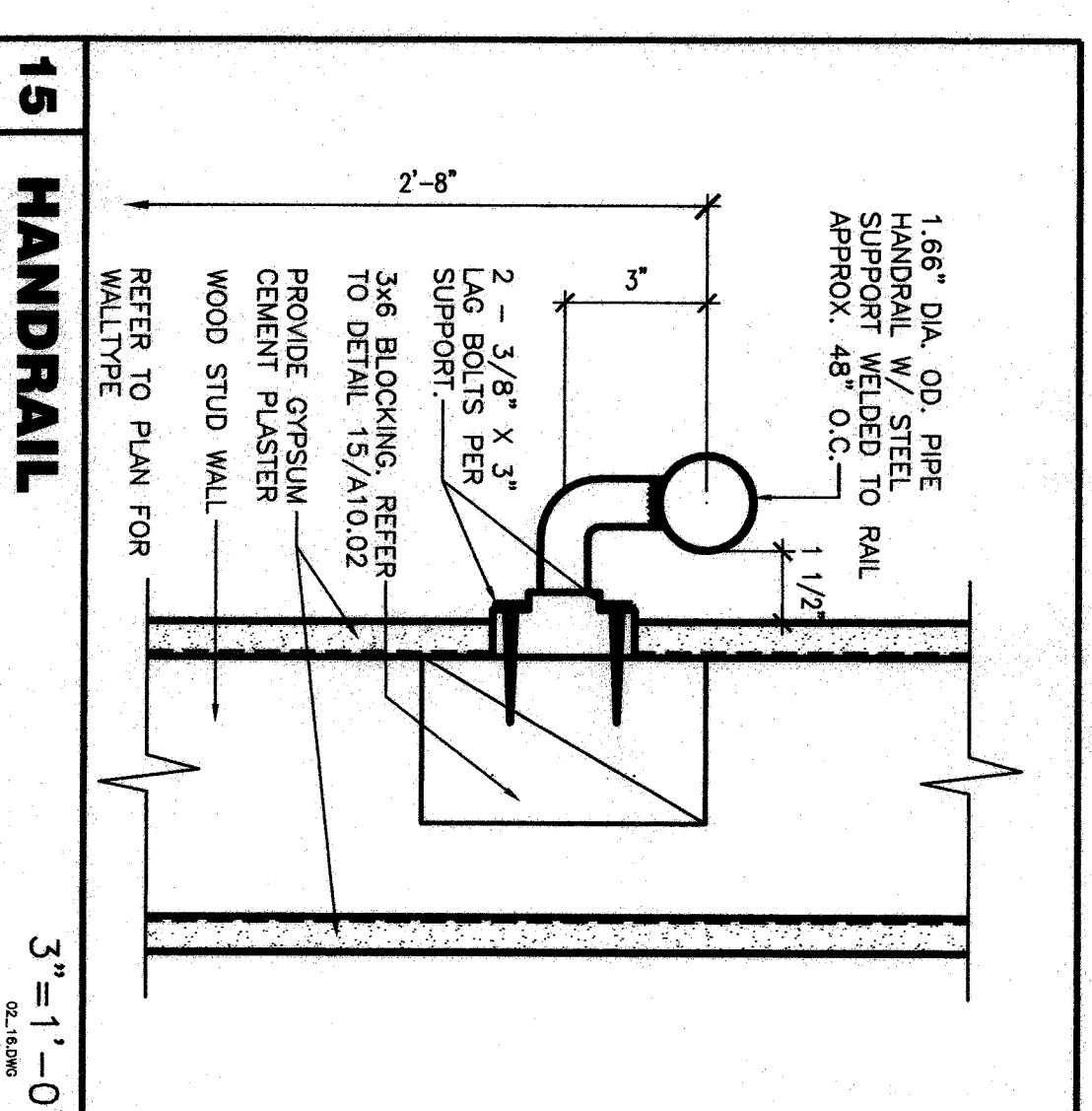
**1 BUILDING 100**



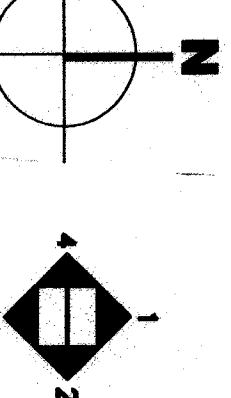
REFERENCE PLAN



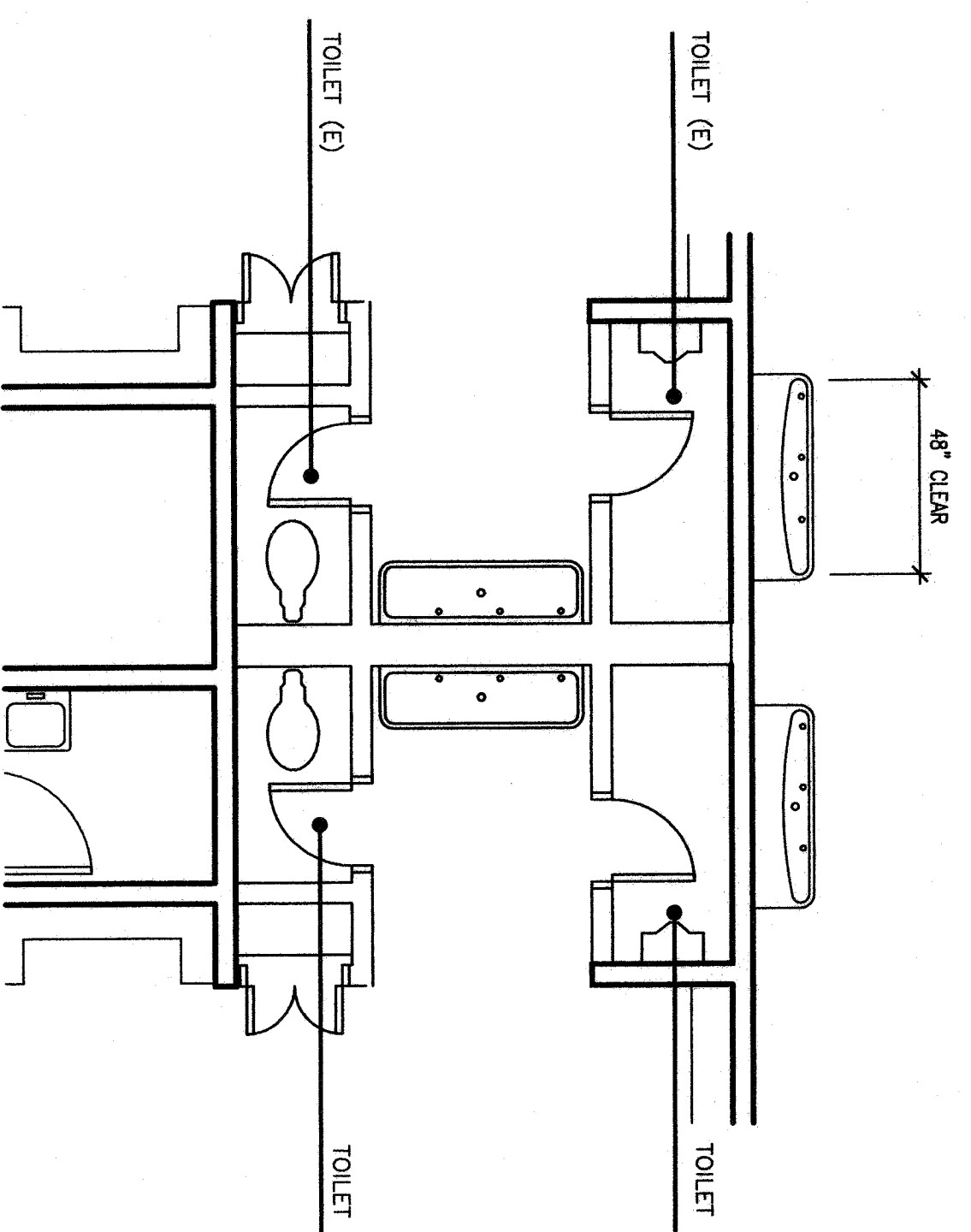
FLOOR PLAN



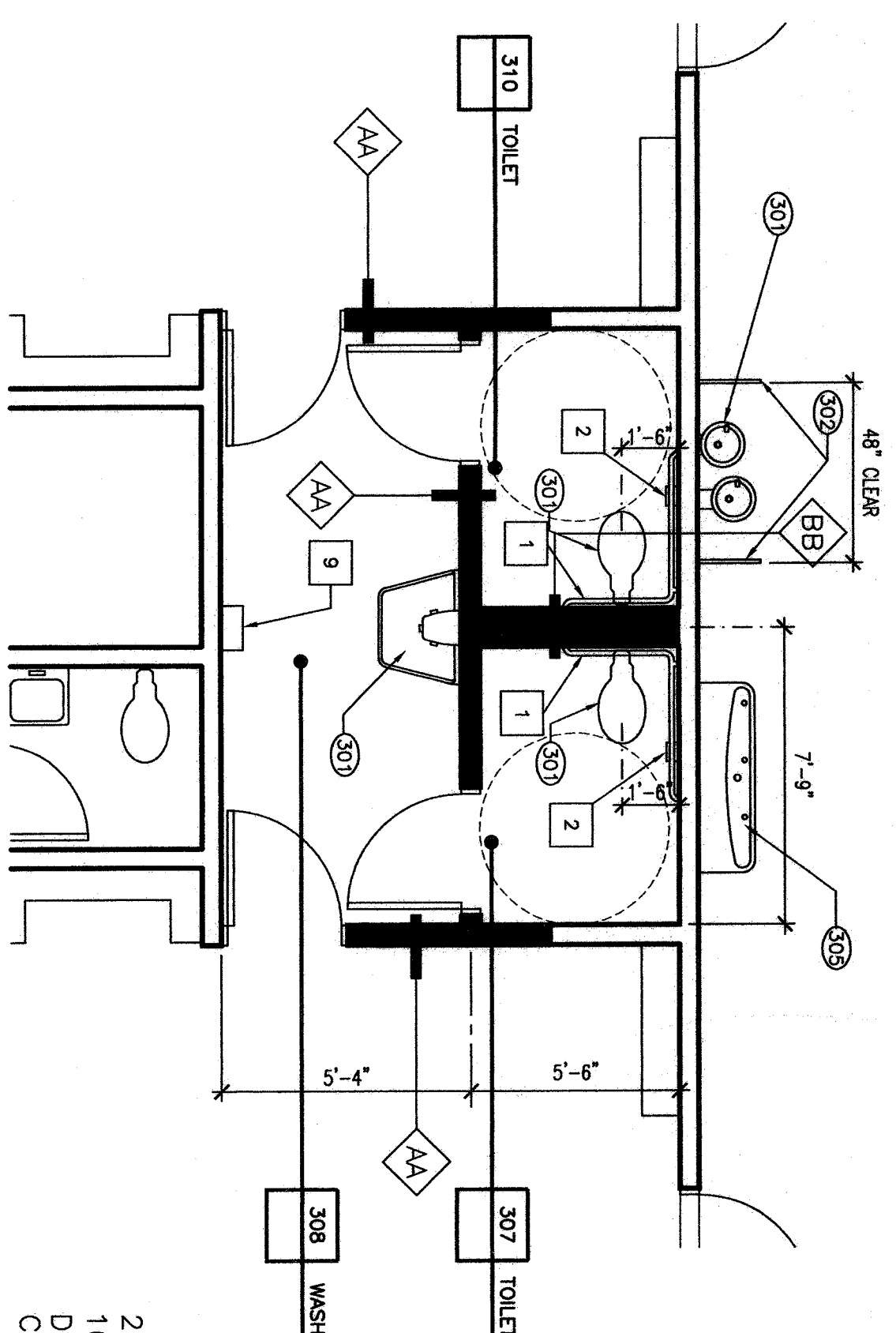
15 HANDRAIL



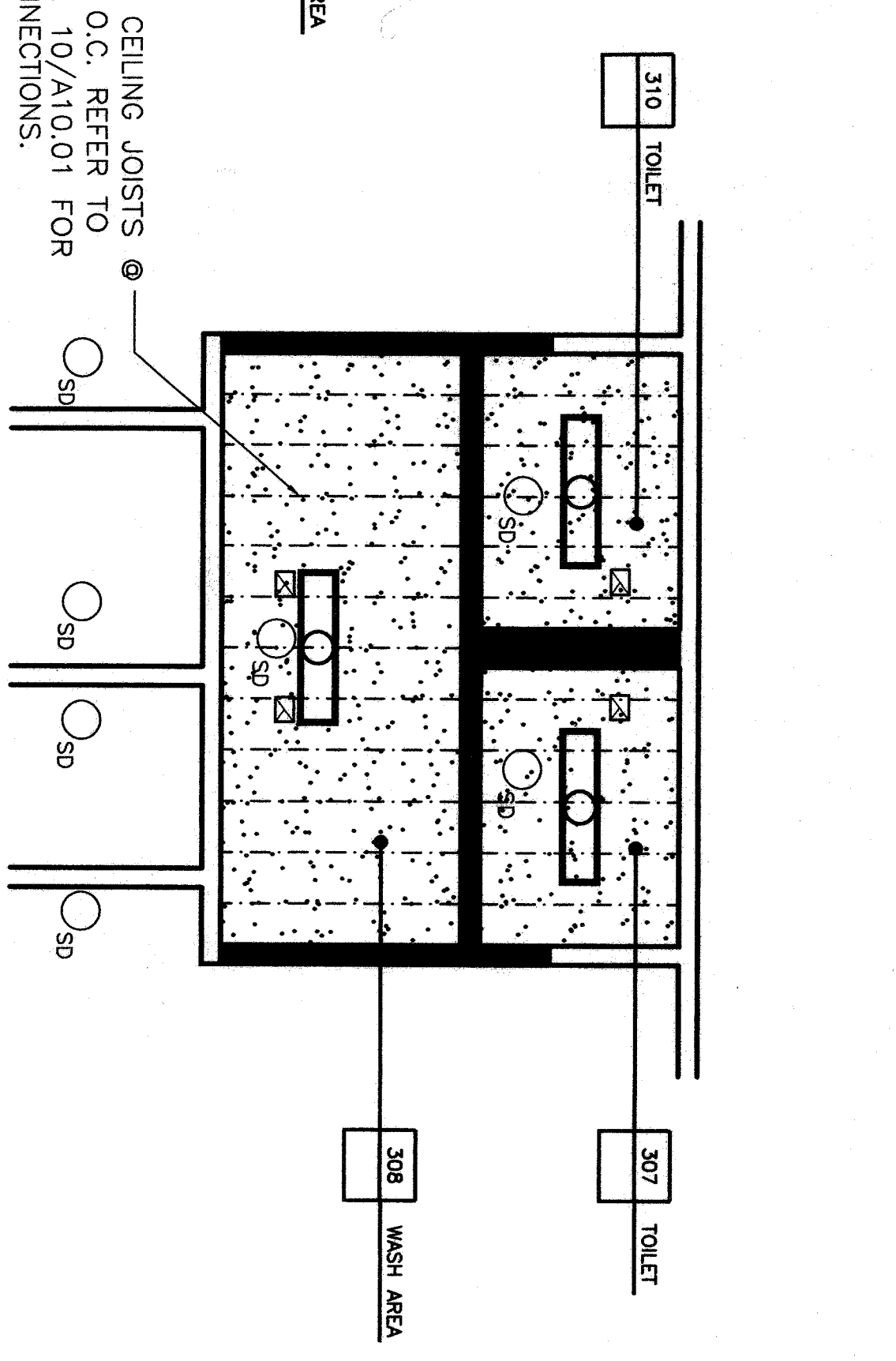
**2 BUILDING 200**



REFERENCE PLAN

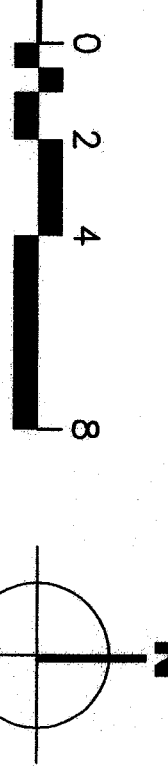


FLOOR PLAN



REFLECTED CEILING PLAN

**3 BUILDING 300**



**KEYNOTES**

- NOTE: KEYNOTES IN THIS LIST MAY NOT NECESSARILY OCCUR ON THIS SHEET.
- 301 PROVIDE PLUMBING FIXTURE REFER TO PLUMBING DRAWINGS.
- 302 PROVIDE PLUMBING FOUNTAIN BARRIER RAIL.
- 303 PATCH AND REPAIR (E) THE FLOOR TO MATCH (E) ADJACENT FLOOR FINISH.
- 304 PROVIDE RECESSED TOILET DISPENSER.
- 305 (E) PLUMBING FIXTURE TO BEHIND 42" HIGH GATE.
- 306 REPLACE HANDRAIL REFER TO 2/4.11 FOR DIMENSIONS.
- 307 PROVIDE INTERNATIONAL SYMBOL OF ACCESSIBILITY SIGNAGE.
- 308 SHALL NOT BE USED TO TRANSPORT MATERIALS OR EQUIPMENT.
- 309 PROVIDE SIGNAGE WITH THE LETTERING REFER TO DETAIL 13/1.11.
- 310 PROVIDE SIGNAGE WITH THE TELEPHONE NUMBER TO CALL IN CASE OF EMERGENCY.

**PLAN LEGEND**

- RY STUD WALL / MTL WALL. SEE KEYNOTES FOR CONSTRUCTION INFORMATION. (REFER TO SHT. A10.01 FOR WALL TYPES)
- (REFER TO DET. 27/A10.01 FOR MTL OF (E) WALL OPENINGS.)
- 60-INCH ACCESSIBLE FLOOR SPACE LOCATION
- 32-INCH X 48-INCH ACCESSIBLE FLOOR SPACE LOCATION
- ONE HOUR WALL W/60 MIN. RATED OPENINGS PER CBC SEC. 702.3 (OCCUPANCY SEPARATION)
- EXITS
- ONE HOUR SEPARATION

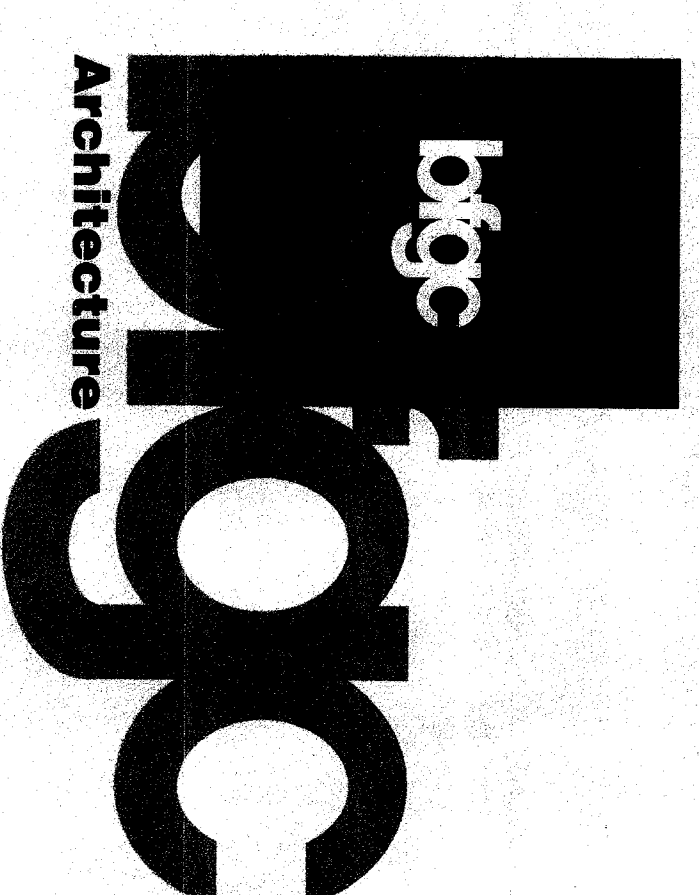
**CEILING LEGEND**

- CEILING HEIGHT
- HEAVY DUTY 2X4 SUSPENDED ACoustICAL CEILING SYSTEM
- 1X4 SURFACE MOUNT LIGHT FIXTURE
- NO CEILING WORK U.O.A.
- CEILING HEIGHT
- G.B. CEILING / SPERTI

**ACCESSORY LEGEND**

- NOTE: ACCESSORIES IN THIS LIST MAY NOT NECESSARILY OCCUR ON THIS SHEET.
- 1 STAINLESS STEEL GRAB BAR. ATTACH PER DETAIL 11/A10.02.
- 2 SEMI-RECESSED TOILET TISSUE DISPENSER.
- 3 OWNER FURNISHED CONTRACTOR INSTALLED TOILET DISPENSER.
- 4 SURFACE MOUNTED LIQUID SOAP DISPENSER.
- 5 SURFACE MOUNTED PAPER TOWEL DISPENSER.
- 6 DISPENSER.
- 7 SURFACE MOUNTED FRAMED MIRROR.
- 8 RECESSED TRIMMED WAPAKI DISPOSAL.
- 9 ELECTRIC HAND DRYER.

NOTE: REFER TO DETAILS 1/A10.02 & 4/A10.02 FOR MOUNTING HEIGHTS AND LOCATIONS



**Bakersfield**

5500 W. 7th St., Suite 400, Bakersfield, CA 93309  
 Tel: 805.833.5530  
 Fax: 805.833.5511

**San Jose**  
 150 South First St., Suite 200  
 San Jose, California 95113  
 Tel: 408.921.9844

**San Luis Obispo**  
 415 Broad Street, Suite 4-B  
 San Luis Obispo, CA 93401  
 Tel: 805.546.0330 or 5401

**Oakland**  
 300 First Street, Suite 300  
 Oakland, California 94612  
 Tel: 916.763.9374

**Principal Architects**  
 David A. Gorman, AIA, C-184  
 Robert A. Gorman, AIA, C-184  
 David A. Gorman, AIA, C-184  
 Robert A. Gorman, AIA, C-184  
 1000 Broadway, Suite 200  
 San Francisco, CA 94109  
 Tel: 415.774.8800



**MODERNIZATION**

FOR

**HENRY ESSLER SCHOOL**  
 2901 ESSLER STREET  
 BAKERSFIELD, CA 93306

BAKERSFIELD CITY SCHOOL DISTRICT

FILE NO.: 15-6  
 INSPECTION STAMP  
 DIV. OF THE STATE ARCHITECT  
 PERM. NO. 01-106893  
 AC 11/15/02  
 DATE 02-28-03

**PARTIAL FLOOR PLANS**

Version Date: 02-1-128  
 Job no. 6-24-03  
 date 6-24-03  
 drawn by DAHERBERA  
 chkd by REMMONS  
 ©copyright 2003

Version time: 3.11