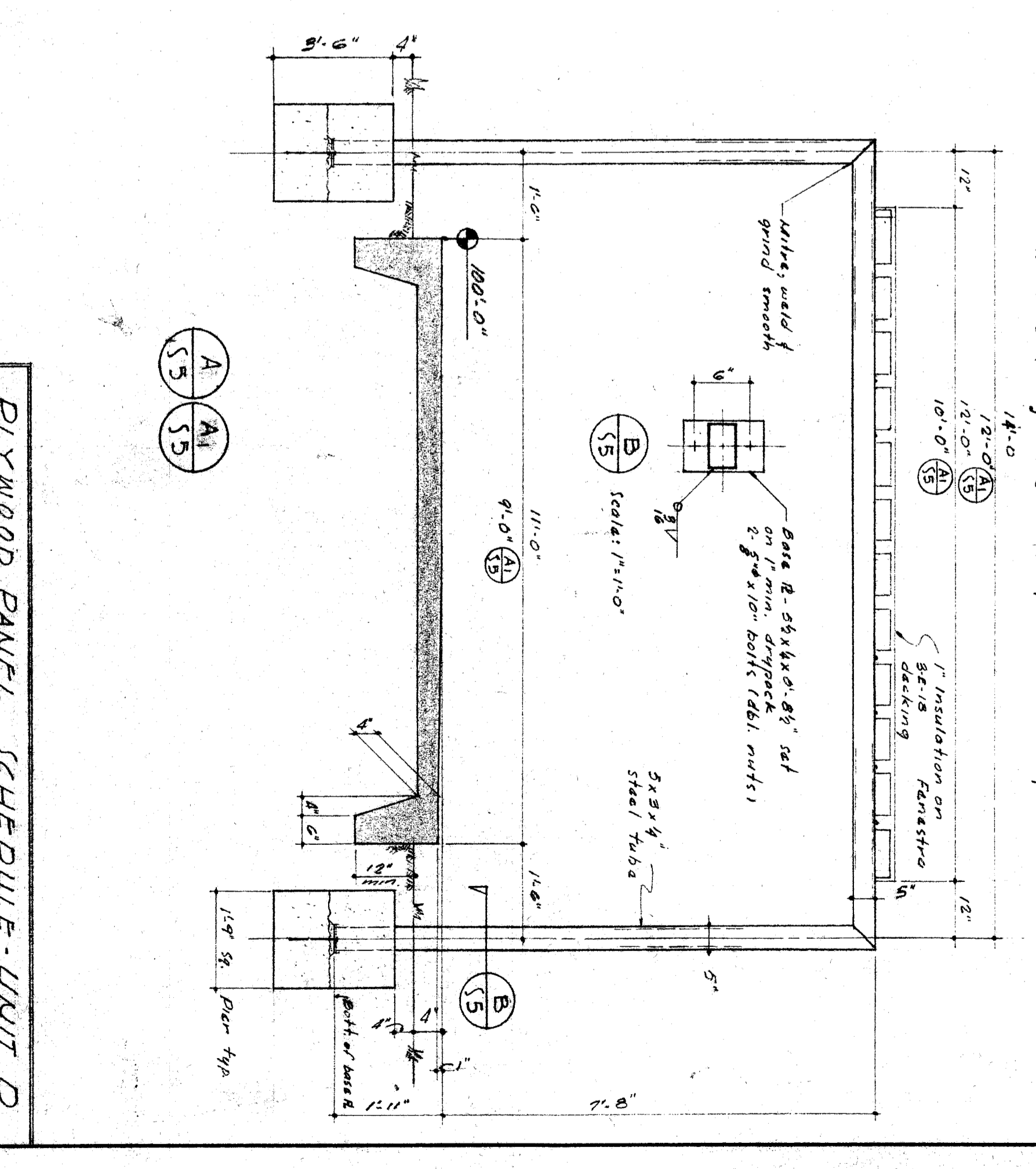
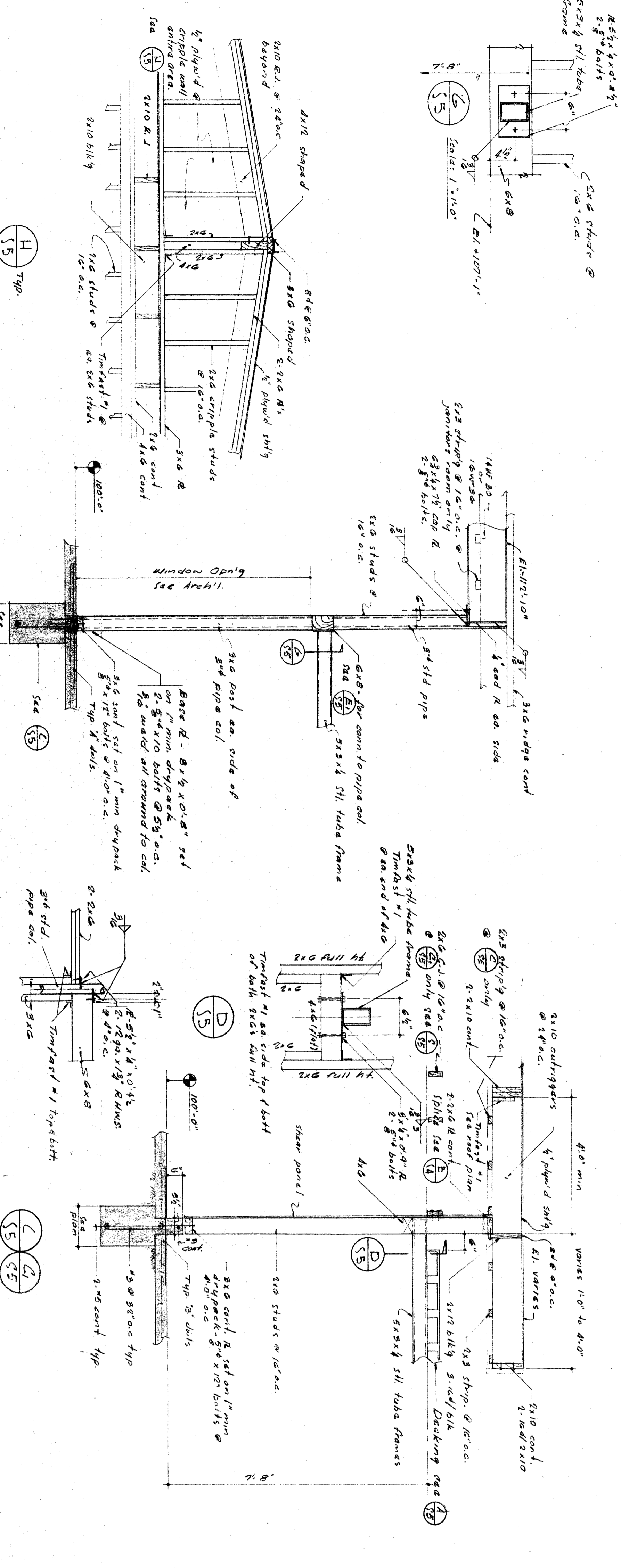


Welding Notes: Along longitudinal seams use 1/2" long welds @ 4'-0" on center. At all bearings use 2-1/4" puddle welds per sheet.



Panel No.	Material	Thickness	Fasteners	Notes
1	3/4" Plywood	3/4"	1/2" x 1/2" @ 12" x 12"	See notes for details
2	2x4 Studs	2x4	1/2" x 1/2" @ 12" x 12"	See notes for details
3	2x6 Studs	2x6	1/2" x 1/2" @ 12" x 12"	See notes for details
4	2x8 Studs	2x8	1/2" x 1/2" @ 12" x 12"	See notes for details
5	2x10 Studs	2x10	1/2" x 1/2" @ 12" x 12"	See notes for details
6	2x12 Studs	2x12	1/2" x 1/2" @ 12" x 12"	See notes for details
7	2x14 Studs	2x14	1/2" x 1/2" @ 12" x 12"	See notes for details
8	2x16 Studs	2x16	1/2" x 1/2" @ 12" x 12"	See notes for details
9	2x18 Studs	2x18	1/2" x 1/2" @ 12" x 12"	See notes for details
10	2x20 Studs	2x20	1/2" x 1/2" @ 12" x 12"	See notes for details

Panel No.	Material	Thickness	Fasteners	Notes
1	3/4" Plywood	3/4"	1/2" x 1/2" @ 12" x 12"	See notes for details
2	2x4 Studs	2x4	1/2" x 1/2" @ 12" x 12"	See notes for details
3	2x6 Studs	2x6	1/2" x 1/2" @ 12" x 12"	See notes for details
4	2x8 Studs	2x8	1/2" x 1/2" @ 12" x 12"	See notes for details
5	2x10 Studs	2x10	1/2" x 1/2" @ 12" x 12"	See notes for details
6	2x12 Studs	2x12	1/2" x 1/2" @ 12" x 12"	See notes for details
7	2x14 Studs	2x14	1/2" x 1/2" @ 12" x 12"	See notes for details
8	2x16 Studs	2x16	1/2" x 1/2" @ 12" x 12"	See notes for details
9	2x18 Studs	2x18	1/2" x 1/2" @ 12" x 12"	See notes for details
10	2x20 Studs	2x20	1/2" x 1/2" @ 12" x 12"	See notes for details

Notes: All plywood panels shall be 3/4" thick unless otherwise noted. All anchor bolts shall be 3/4" dia. x 12" long. All framing members shall be as shown on roof plan. All joints in plywood panels shall be staggered. Plywood panels shall be installed in accordance with the manufacturer's instructions.

FRAMING SECTIONS

TYPE PLYWOOD PANEL ELEVATION

Unless otherwise noted scale: 1/4" = 1'-0"

Architects: WRIGHT METCALF & PARSONS

Engineers: HILLMAN & NOWELL

Contractor: BAKERFIELD CITY SCHOOL DISTRICT

Project: NEW JUNIOR HIGH SCHOOL

Sheet No: S-5