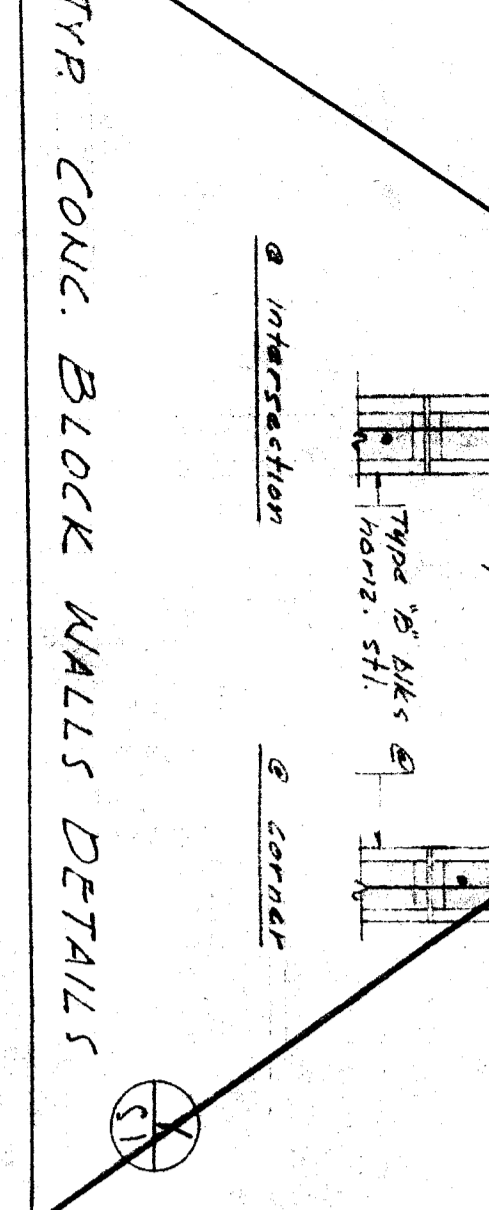
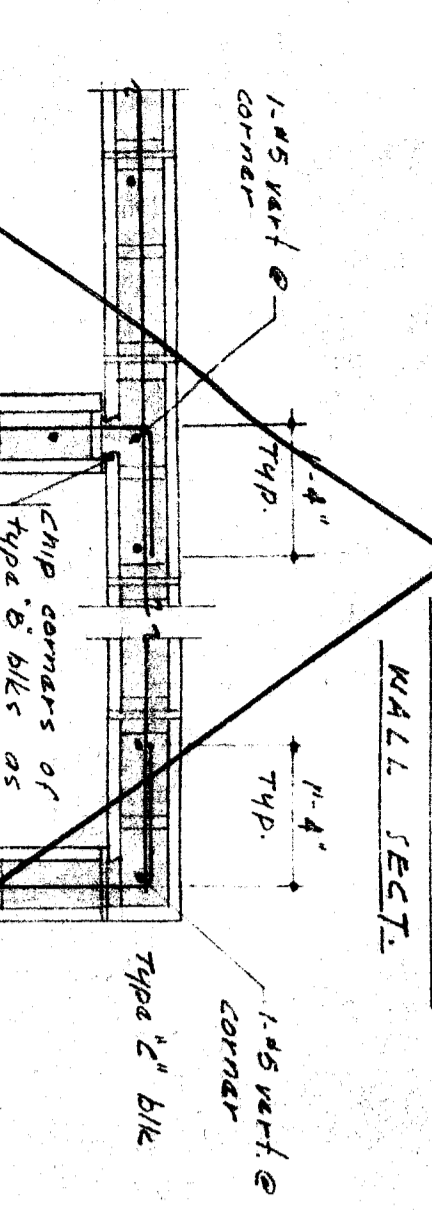
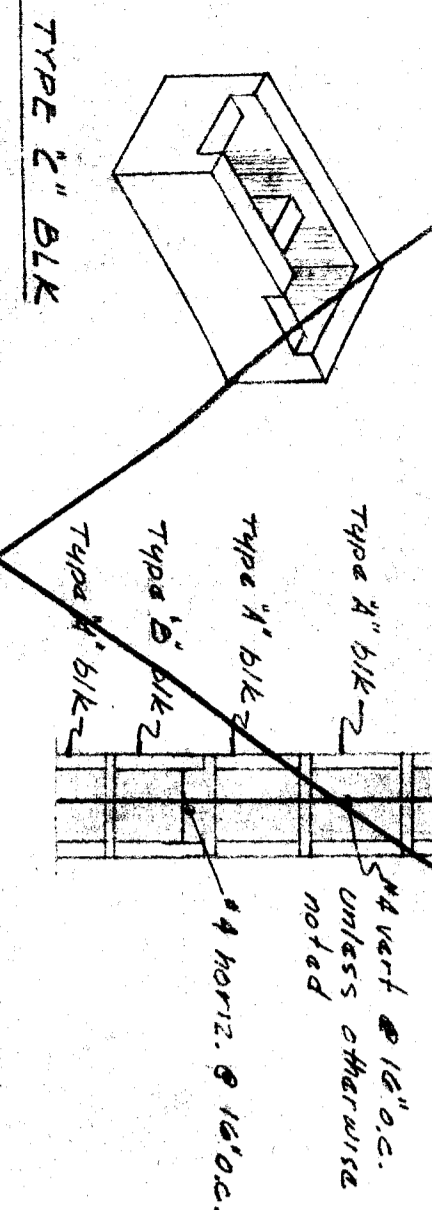
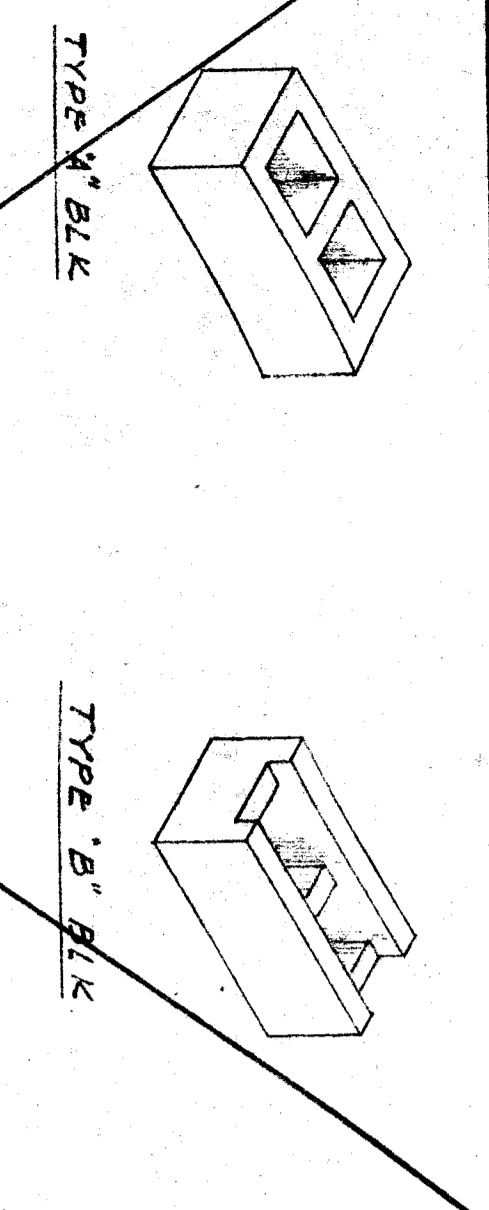


TYR EDGE SPLICE DETAIL



GENERAL NOTES:

1. All steel connections shall be designed and detailed in accordance with the AISC Specification for Structural Steel Buildings, 1989 Edition, and the AISC Specification for Moment Resisting Joints in Buildings, 1989 Edition.
2. All steel members shall be fabricated in accordance with the AISC Specification for Structural Steel Buildings, 1989 Edition, and the AISC Specification for Moment Resisting Joints in Buildings, 1989 Edition.
3. All steel members shall be painted with a minimum of two coats of zinc-rich primer and two coats of paint.
4. All steel members shall be galvanized in accordance with the AISC Specification for Structural Steel Buildings, 1989 Edition, and the AISC Specification for Moment Resisting Joints in Buildings, 1989 Edition.
5. All steel members shall be protected against fire in accordance with the AISC Specification for Structural Steel Buildings, 1989 Edition, and the AISC Specification for Moment Resisting Joints in Buildings, 1989 Edition.

REINFORCED CONCRETE:

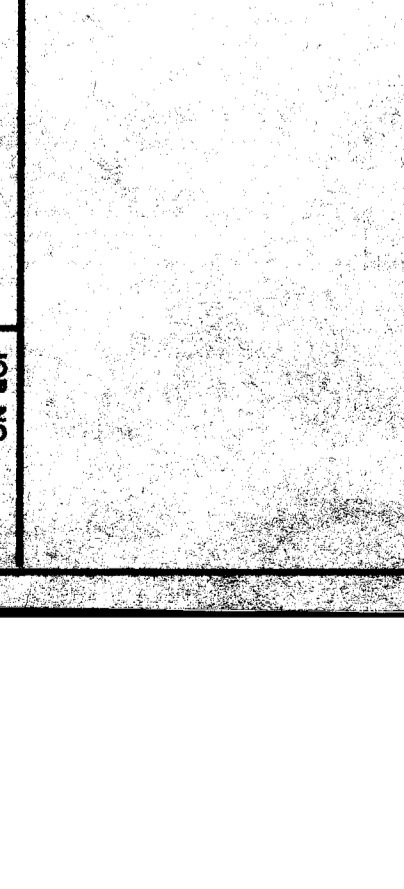
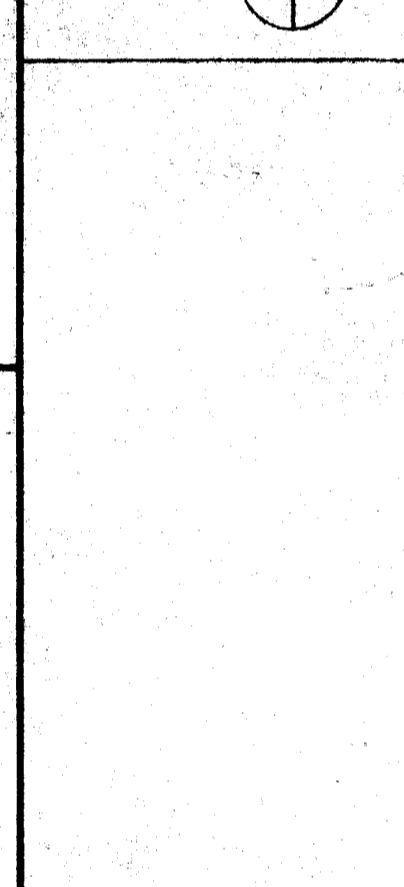
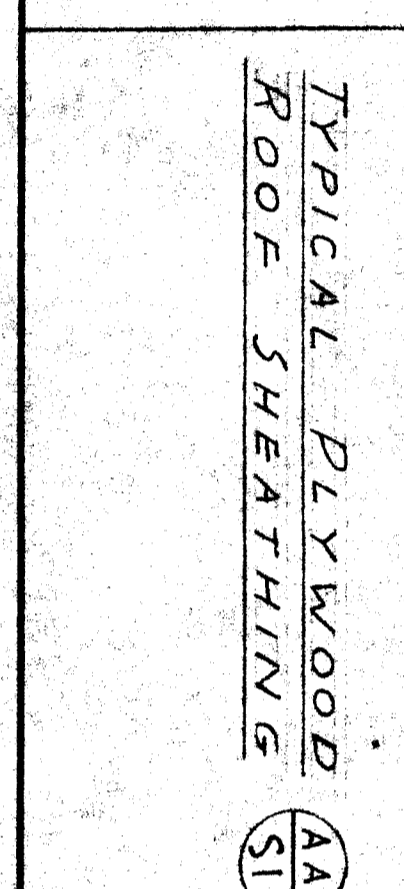
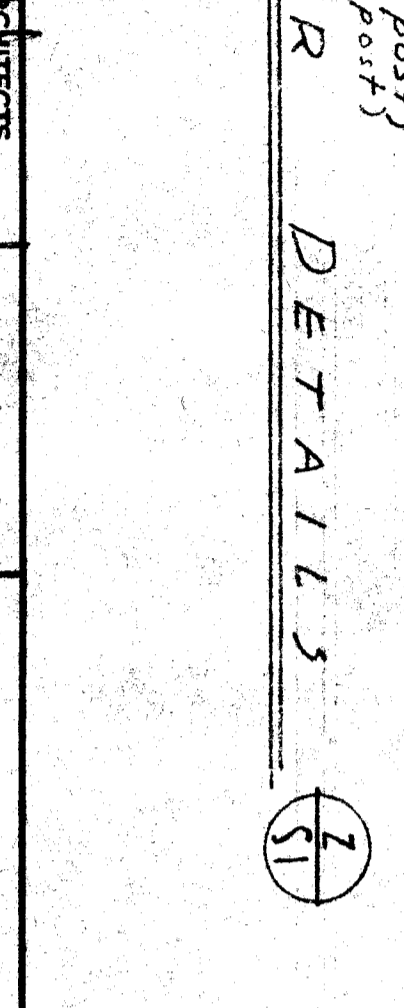
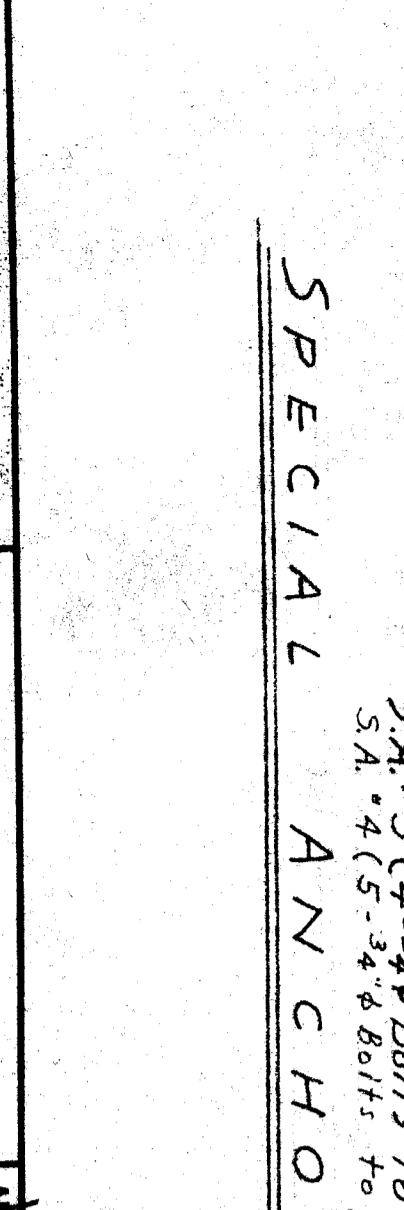
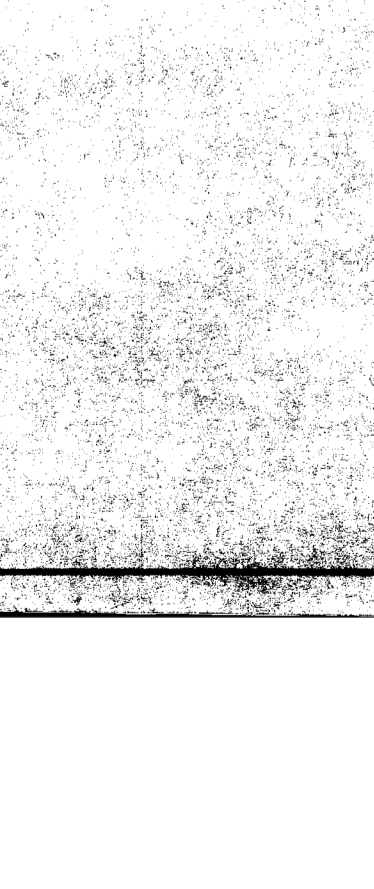
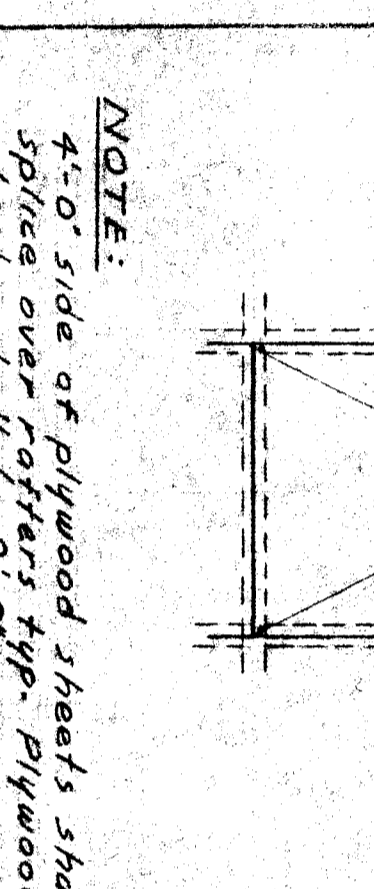
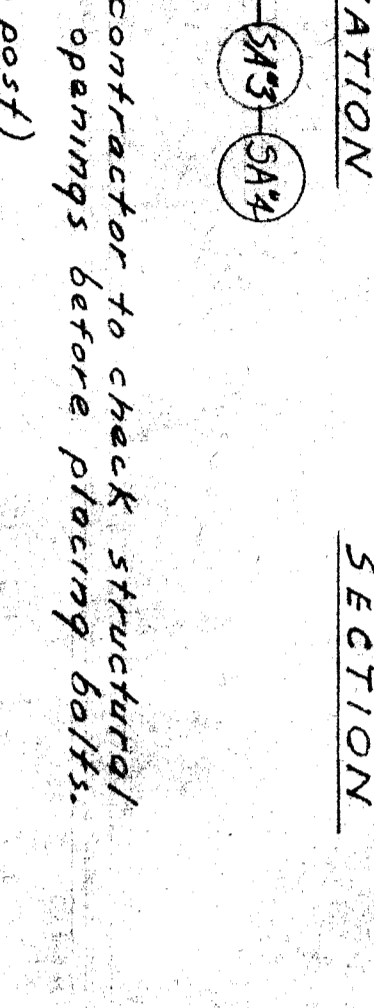
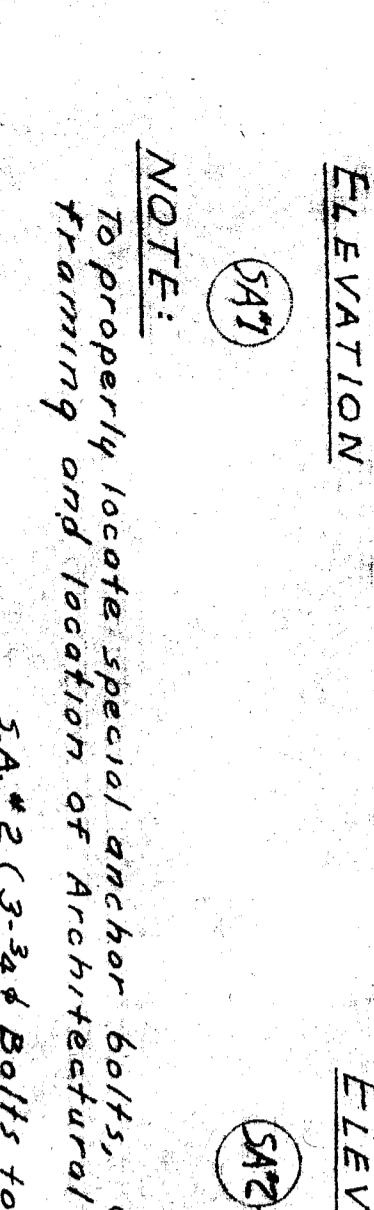
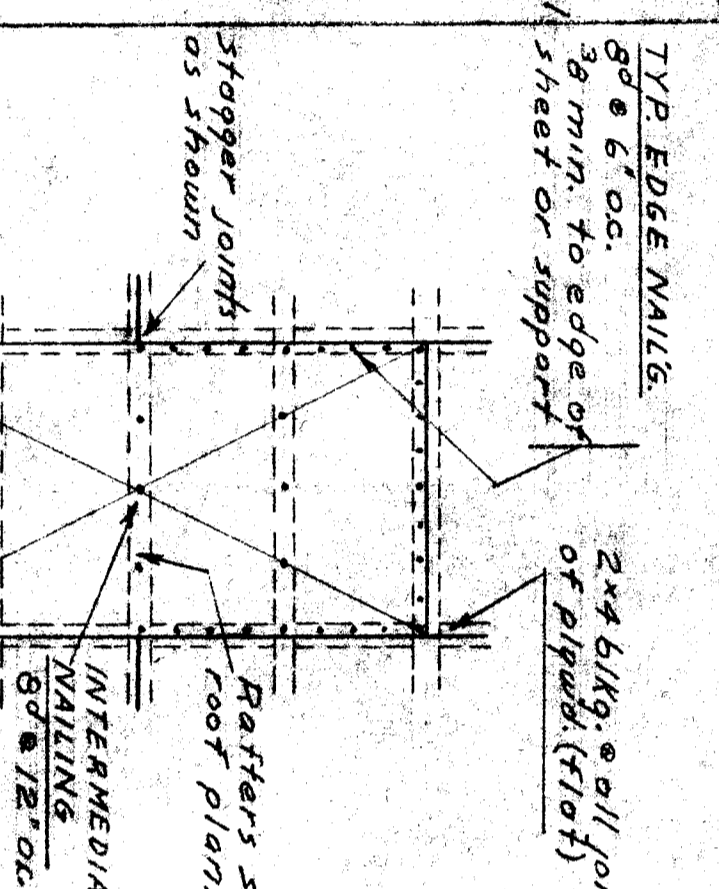
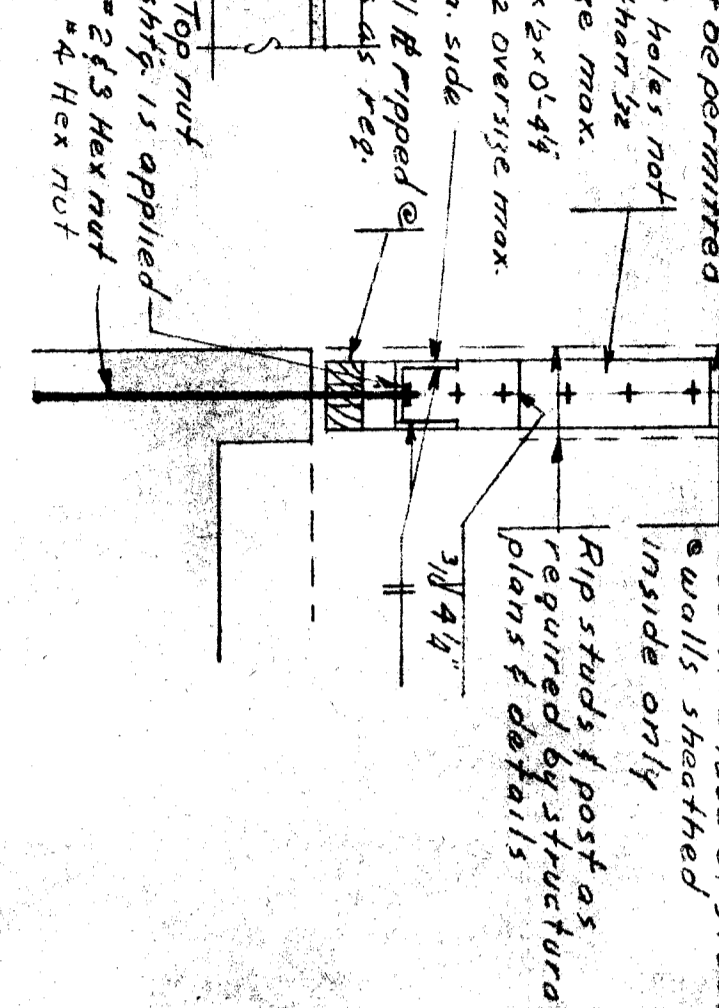
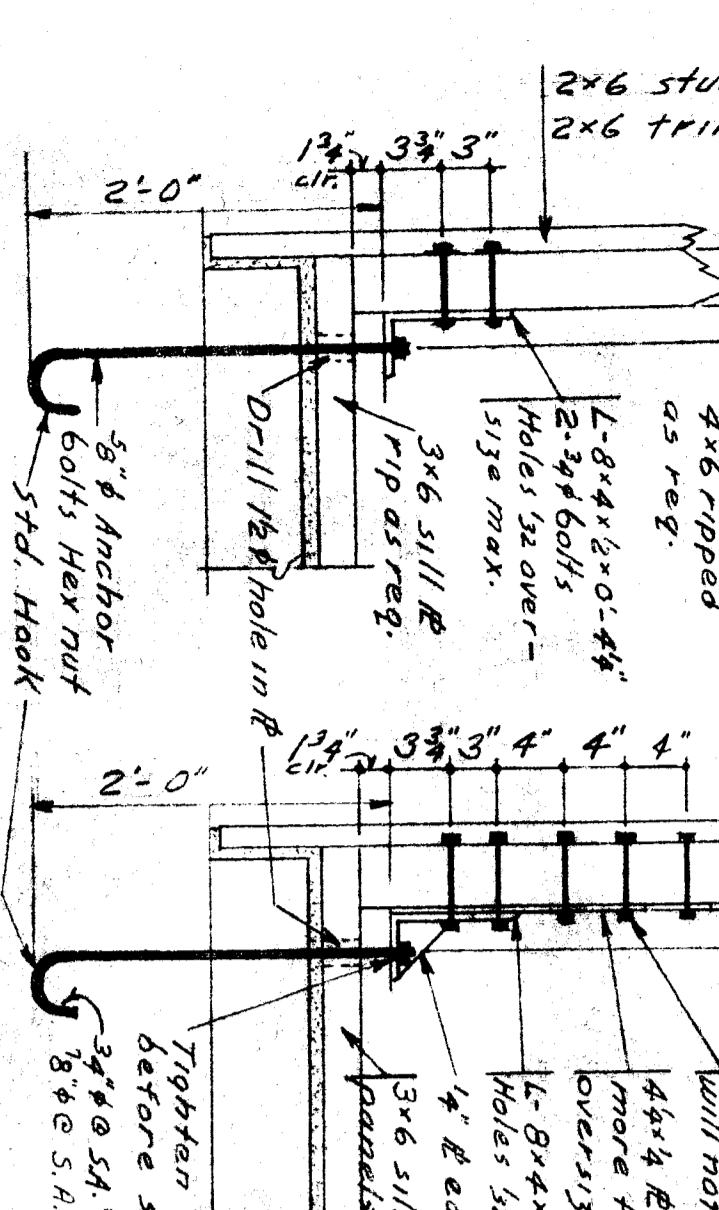
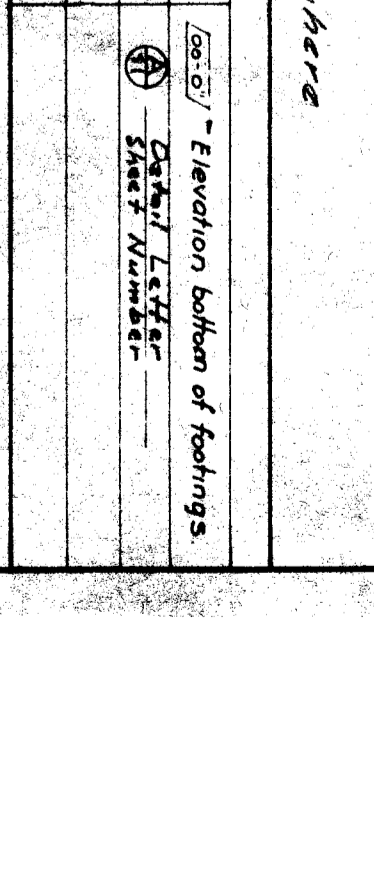
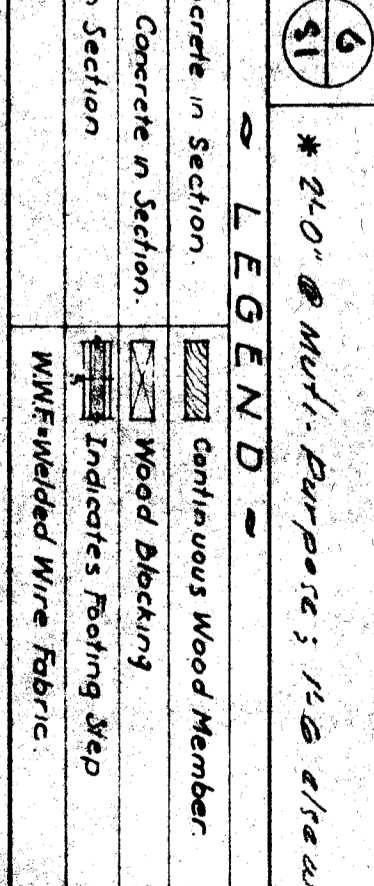
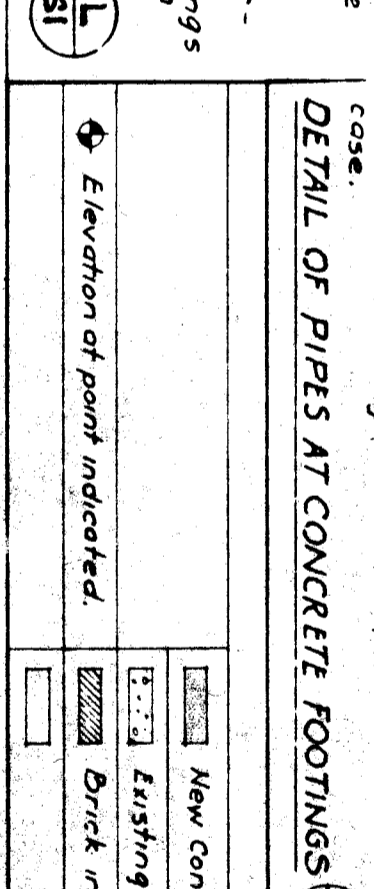
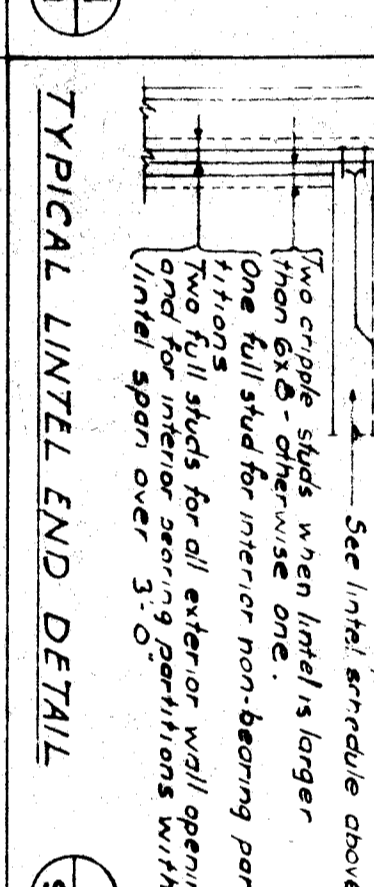
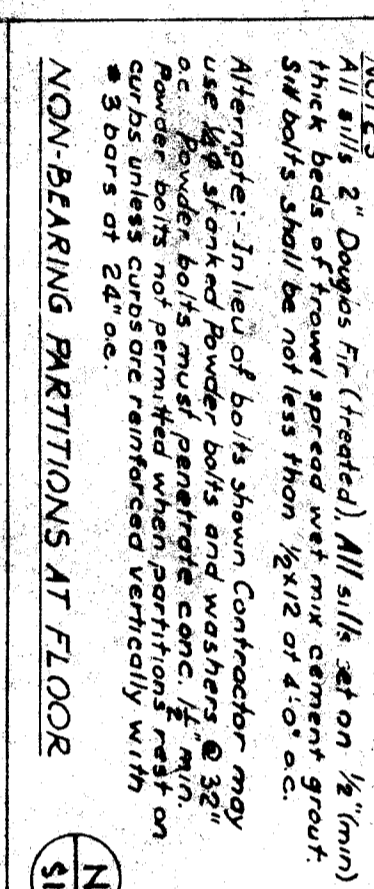
1. All concrete shall be cast in accordance with the ACI 308R-85 Building Code Requirements for Reinforced Concrete and Commentary.
2. All concrete shall be cured in accordance with the ACI 308R-85 Building Code Requirements for Reinforced Concrete and Commentary.
3. All concrete shall be finished in accordance with the ACI 308R-85 Building Code Requirements for Reinforced Concrete and Commentary.
4. All concrete shall be tested in accordance with the ACI 308R-85 Building Code Requirements for Reinforced Concrete and Commentary.

STRUCTURAL STEEL:

1. All steel members shall be fabricated in accordance with the AISC Specification for Structural Steel Buildings, 1989 Edition, and the AISC Specification for Moment Resisting Joints in Buildings, 1989 Edition.
2. All steel members shall be painted with a minimum of two coats of zinc-rich primer and two coats of paint.
3. All steel members shall be galvanized in accordance with the AISC Specification for Structural Steel Buildings, 1989 Edition, and the AISC Specification for Moment Resisting Joints in Buildings, 1989 Edition.
4. All steel members shall be protected against fire in accordance with the AISC Specification for Structural Steel Buildings, 1989 Edition, and the AISC Specification for Moment Resisting Joints in Buildings, 1989 Edition.

MASSIVE SCHEDULE FOR BOLTS & LUG SCREWS

| Size | Min. Thickness | Max. Thickness |
|---------|----------------|----------------|
| 1/2" | 1/4" | 3/4" |
| 3/4" | 1/4" | 1 1/4" |
| 1" | 1/4" | 1 3/4" |
| 1 1/4" | 1/4" | 2 1/4" |
| 1 1/2" | 1/4" | 2 3/4" |
| 2" | 1/4" | 3 1/4" |
| 2 1/2" | 1/4" | 4 1/4" |
| 3" | 1/4" | 5 1/4" |
| 3 1/2" | 1/4" | 6 1/4" |
| 4" | 1/4" | 7 1/4" |
| 4 1/2" | 1/4" | 8 1/4" |
| 5" | 1/4" | 9 1/4" |
| 5 1/2" | 1/4" | 10 1/4" |
| 6" | 1/4" | 11 1/4" |
| 6 1/2" | 1/4" | 12 1/4" |
| 7" | 1/4" | 13 1/4" |
| 7 1/2" | 1/4" | 14 1/4" |
| 8" | 1/4" | 15 1/4" |
| 8 1/2" | 1/4" | 16 1/4" |
| 9" | 1/4" | 17 1/4" |
| 9 1/2" | 1/4" | 18 1/4" |
| 10" | 1/4" | 19 1/4" |
| 10 1/2" | 1/4" | 20 1/4" |
| 11" | 1/4" | 21 1/4" |
| 11 1/2" | 1/4" | 22 1/4" |
| 12" | 1/4" | 23 1/4" |
| 12 1/2" | 1/4" | 24 1/4" |
| 13" | 1/4" | 25 1/4" |
| 13 1/2" | 1/4" | 26 1/4" |
| 14" | 1/4" | 27 1/4" |
| 14 1/2" | 1/4" | 28 1/4" |
| 15" | 1/4" | 29 1/4" |
| 15 1/2" | 1/4" | 30 1/4" |
| 16" | 1/4" | 31 1/4" |
| 16 1/2" | 1/4" | 32 1/4" |
| 17" | 1/4" | 33 1/4" |
| 17 1/2" | 1/4" | 34 1/4" |
| 18" | 1/4" | 35 1/4" |
| 18 1/2" | 1/4" | 36 1/4" |
| 19" | 1/4" | 37 1/4" |
| 19 1/2" | 1/4" | 38 1/4" |
| 20" | 1/4" | 39 1/4" |
| 20 1/2" | 1/4" | 40 1/4" |
| 21" | 1/4" | 41 1/4" |
| 21 1/2" | 1/4" | 42 1/4" |
| 22" | 1/4" | 43 1/4" |
| 22 1/2" | 1/4" | 44 1/4" |
| 23" | 1/4" | 45 1/4" |
| 23 1/2" | 1/4" | 46 1/4" |
| 24" | 1/4" | 47 1/4" |
| 24 1/2" | 1/4" | 48 1/4" |
| 25" | 1/4" | 49 1/4" |
| 25 1/2" | 1/4" | 50 1/4" |
| 26" | 1/4" | 51 1/4" |
| 26 1/2" | 1/4" | 52 1/4" |
| 27" | 1/4" | 53 1/4" |
| 27 1/2" | 1/4" | 54 1/4" |
| 28" | 1/4" | 55 1/4" |
| 28 1/2" | 1/4" | 56 1/4" |
| 29" | 1/4" | 57 1/4" |
| 29 1/2" | 1/4" | 58 1/4" |
| 30" | 1/4" | 59 1/4" |
| 30 1/2" | 1/4" | 60 1/4" |
| 31" | 1/4" | 61 1/4" |
| 31 1/2" | 1/4" | 62 1/4" |
| 32" | 1/4" | 63 1/4" |
| 32 1/2" | 1/4" | 64 1/4" |
| 33" | 1/4" | 65 1/4" |
| 33 1/2" | 1/4" | 66 1/4" |
| 34" | 1/4" | 67 1/4" |
| 34 1/2" | 1/4" | 68 1/4" |
| 35" | 1/4" | 69 1/4" |
| 35 1/2" | 1/4" | 70 1/4" |
| 36" | 1/4" | 71 1/4" |
| 36 1/2" | 1/4" | 72 1/4" |
| 37" | 1/4" | 73 1/4" |
| 37 1/2" | 1/4" | 74 1/4" |
| 38" | 1/4" | 75 1/4" |
| 38 1/2" | 1/4" | 76 1/4" |
| 39" | 1/4" | 77 1/4" |
| 39 1/2" | 1/4" | 78 1/4" |
| 40" | 1/4" | 79 1/4" |
| 40 1/2" | 1/4" | 80 1/4" |
| 41" | 1/4" | 81 1/4" |
| 41 1/2" | 1/4" | 82 1/4" |
| 42" | 1/4" | 83 1/4" |
| 42 1/2" | 1/4" | 84 1/4" |
| 43" | 1/4" | 85 1/4" |
| 43 1/2" | 1/4" | 86 1/4" |
| 44" | 1/4" | 87 1/4" |
| 44 1/2" | 1/4" | 88 1/4" |
| 45" | 1/4" | 89 1/4" |
| 45 1/2" | 1/4" | 90 1/4" |
| 46" | 1/4" | 91 1/4" |
| 46 1/2" | 1/4" | 92 1/4" |
| 47" | 1/4" | 93 1/4" |
| 47 1/2" | 1/4" | 94 1/4" |
| 48" | 1/4" | 95 1/4" |
| 48 1/2" | 1/4" | 96 1/4" |
| 49" | 1/4" | 97 1/4" |
| 49 1/2" | 1/4" | 98 1/4" |
| 50" | 1/4" | 99 1/4" |
| 50 1/2" | 1/4" | 100 1/4" |



DATE: 10/1/83

PROJECT: WRIGHT METCALF & PARSONS

ARCHITECTS: WRIGHT METCALF & PARSONS

ENGINEER: WRIGHT METCALF & PARSONS

DESIGNER: WRIGHT METCALF & PARSONS

CHECKED BY: WRIGHT METCALF & PARSONS

DATE: 10/1/83

DATE: 10/1/83

PROJECT: WRIGHT METCALF & PARSONS

ARCHITECTS: WRIGHT METCALF & PARSONS

ENGINEER: WRIGHT METCALF & PARSONS

DESIGNER: WRIGHT METCALF & PARSONS

CHECKED BY: WRIGHT METCALF & PARSONS

DATE: 10/1/83

DATE: 10/1/83

PROJECT: WRIGHT METCALF & PARSONS

ARCHITECTS: WRIGHT METCALF & PARSONS

ENGINEER: WRIGHT METCALF & PARSONS

DESIGNER: WRIGHT METCALF & PARSONS

CHECKED BY: WRIGHT METCALF & PARSONS

DATE: 10/1/83

DATE: 10/1/83

PROJECT: WRIGHT METCALF & PARSONS

ARCHITECTS: WRIGHT METCALF & PARSONS

ENGINEER: WRIGHT METCALF & PARSONS

DESIGNER: WRIGHT METCALF & PARSONS

CHECKED BY: WRIGHT METCALF & PARSONS

DATE: 10/1/83

DATE: 10/1/83

PROJECT: WRIGHT METCALF & PARSONS

ARCHITECTS: WRIGHT METCALF & PARSONS

ENGINEER: WRIGHT METCALF & PARSONS

DESIGNER: WRIGHT METCALF & PARSONS

CHECKED BY: WRIGHT METCALF & PARSONS

DATE: 10/1/83

DATE: 10/1/83

PROJECT: WRIGHT METCALF & PARSONS

ARCHITECTS: WRIGHT METCALF & PARSONS

ENGINEER: WRIGHT METCALF & PARSONS

DESIGNER: WRIGHT METCALF & PARSONS

CHECKED BY: WRIGHT METCALF & PARSONS

DATE: 10/1/83

DATE: 10/1/83

PROJECT: WRIGHT METCALF & PARSONS

ARCHITECTS: WRIGHT METCALF & PARSONS

ENGINEER: WRIGHT METCALF & PARSONS

DESIGNER: WRIGHT METCALF & PARSONS

CHECKED BY: WRIGHT METCALF & PARSONS

DATE: 10/1/83

DATE: 10/1/83

PROJECT: WRIGHT METCALF & PARSONS

ARCHITECTS: WRIGHT METCALF & PARSONS

ENGINEER: WRIGHT METCALF & PARSONS

DESIGNER: WRIGHT METCALF & PARSONS

CHECKED BY: WRIGHT METCALF & PARSONS

DATE: 10/1/83