

ELECTRICAL ENGINEER
D. J. Parsons
 FOSTER & SAMMONSON
 REGISTRATION 344

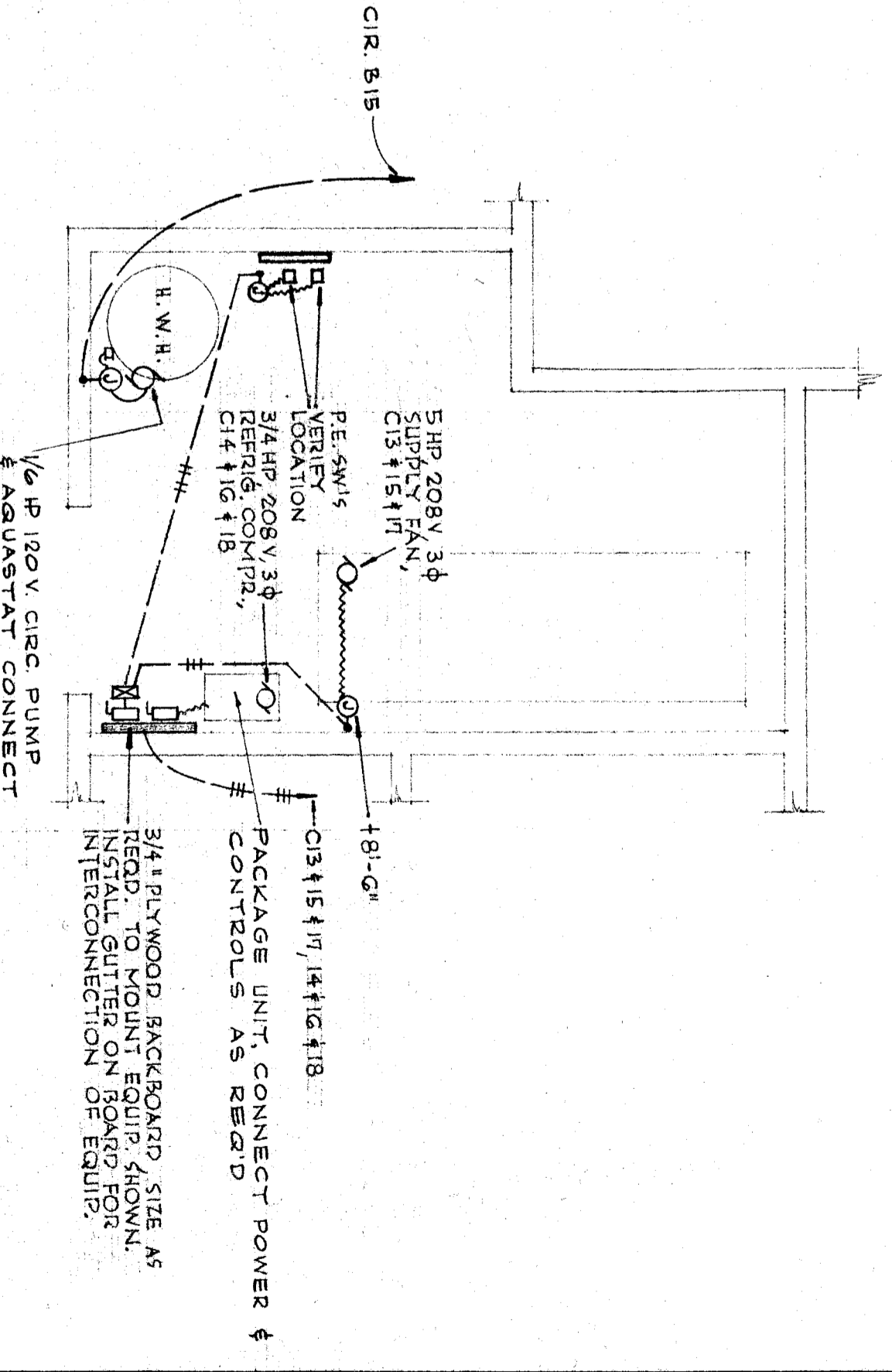
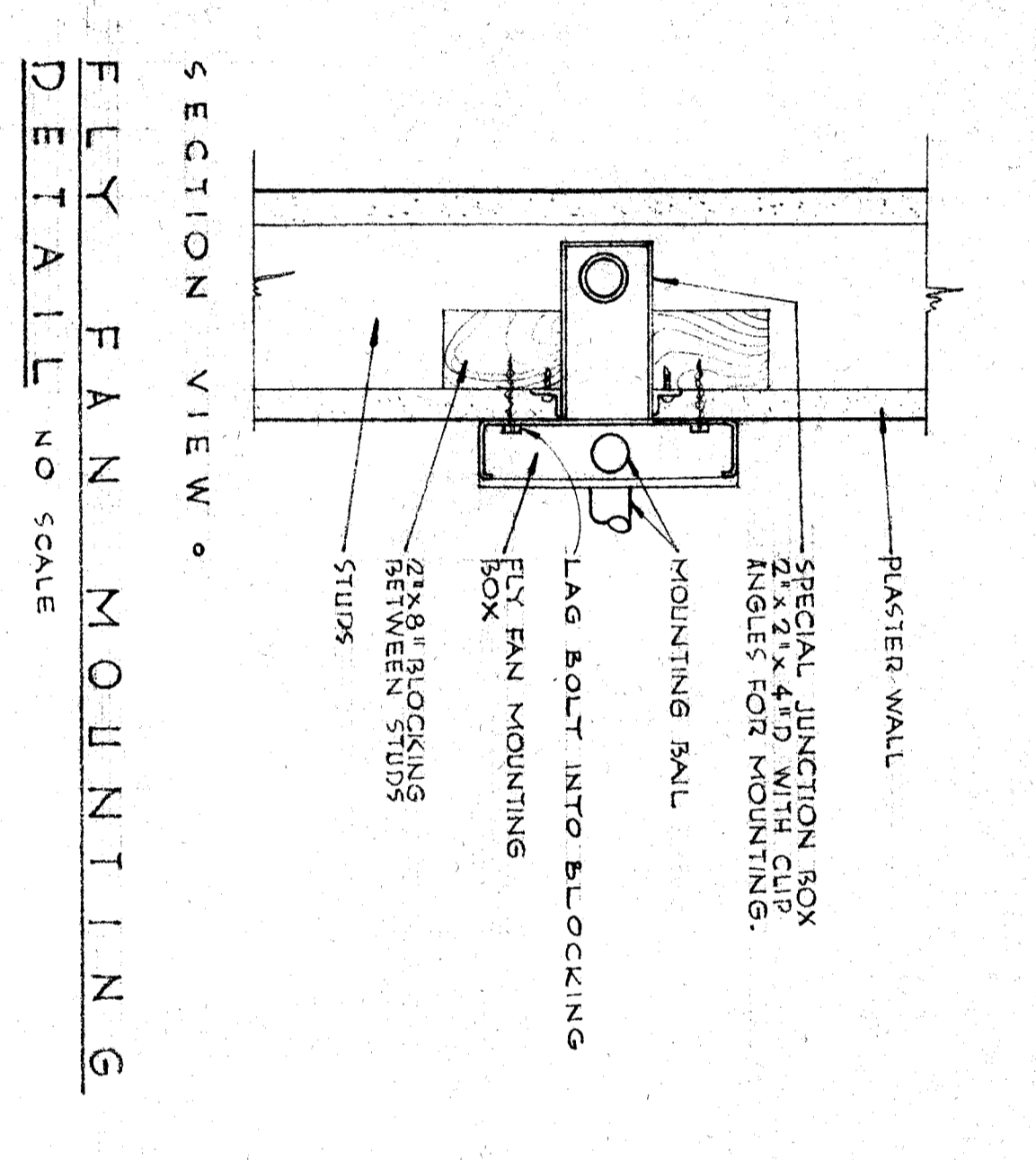
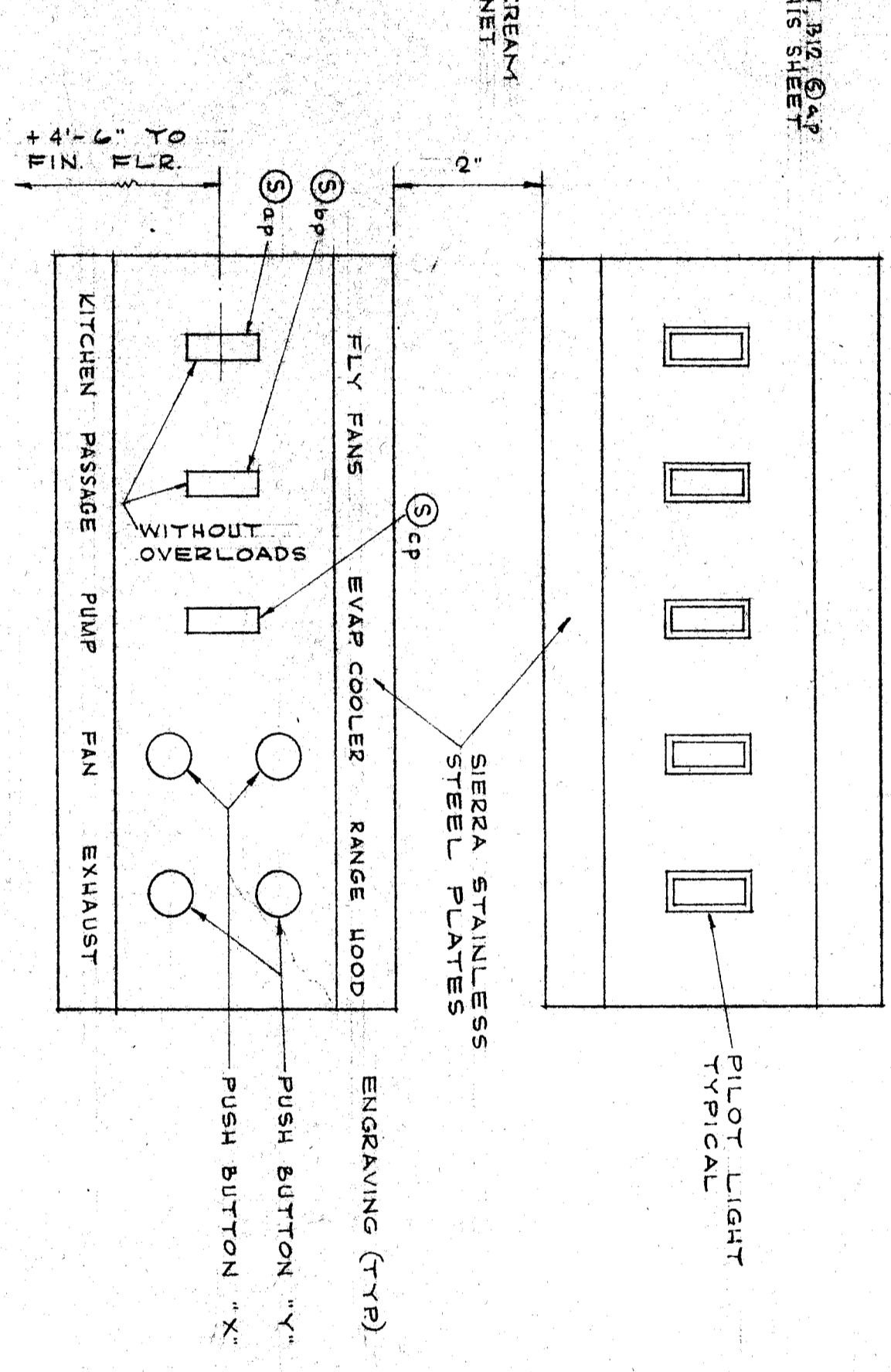
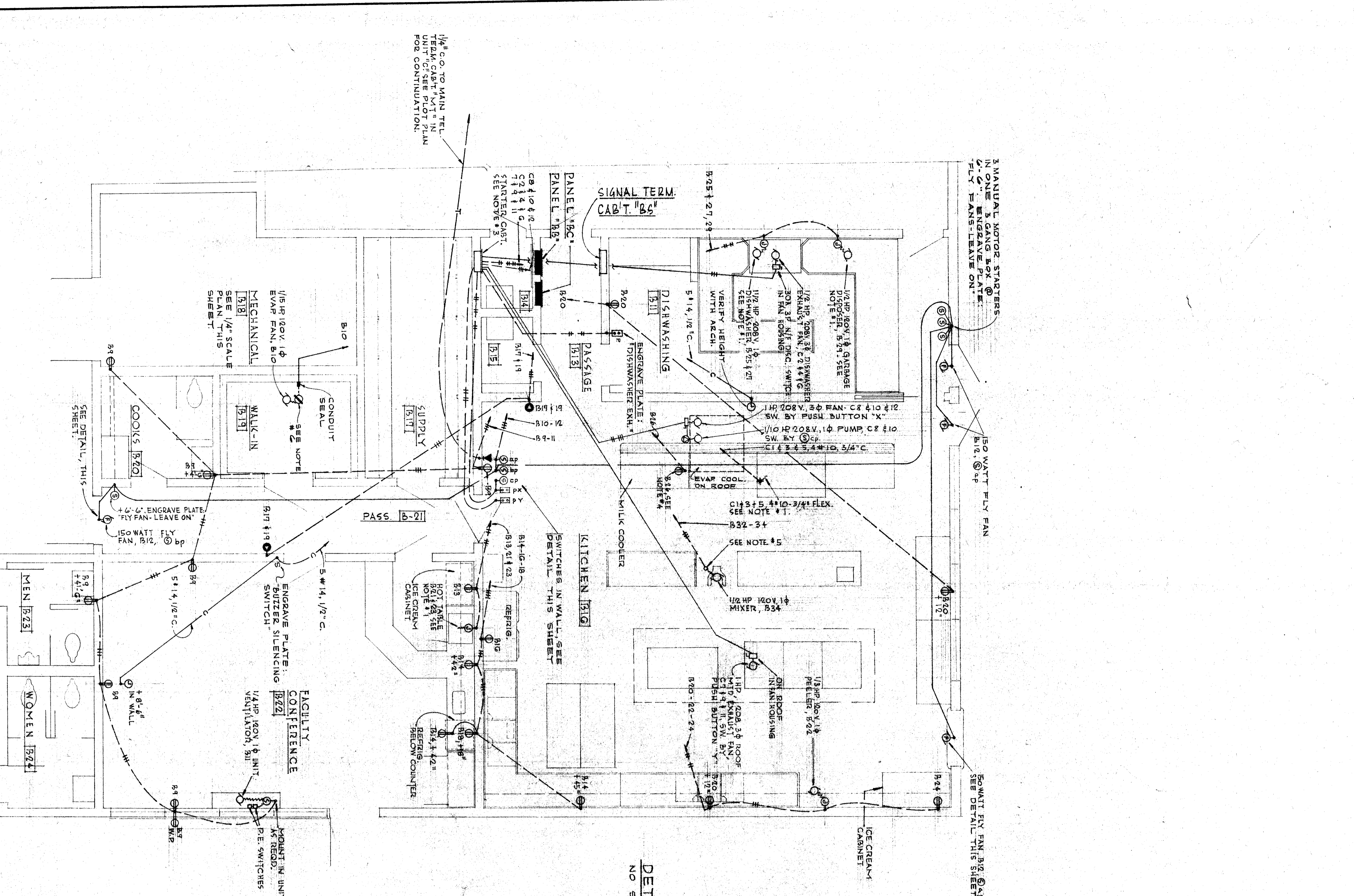
ARCHITECTS
Wright Metcalf & Parsons
 ARCHITECTS
 2911 N. L. ST. CHICAGO, ILL.

ENLARGED PLAN OF KITCHEN & FACILITY DISHWASHER AREA
 SCALE: 1/4" = 1'-0"

BAKERSFIELD CITY SCHOOL DISTRICT BOARD OF EDUCATION
 APPROVED: _____
 DATE: DEC 2 1953

UNIT "B" - KITCHEN AREA
 POWER & SIGNAL ENLARGED PLAN
 NEW JUNIOR HIGH SCHOOL
 WOOD LANE & REAR ROAD
 BAKERSFIELD CITY SCHOOL DISTRICT
 BAKERSFIELD, CALIFORNIA

JOB NO.
 SHEET NO. **E-6**



120/208 VOLTS
 3 PHASE (NO NEUTRAL)
 PANEL "B" C
 700 A. BUSHING
 LOCATION: FACILITY, ENGRAVE PLATE AT BOTTOM AND LIST

LOCATION	WATTS	PHASE	TYPE	WATTS	PHASE	TYPE	LOCATION
NOT TABLE	1200	3	1	300	3	1	DISHWASHER
EXHAUST FAN	1200	3	1	300	3	1	EVAP COOLER
SUPPLY FAN	1200	3	1	300	3	1	EVAP COOLER
3 SPACE	0	3	0	0	3	0	3 SPACE
TOTAL WATTS = 3600							
TOTAL WATTS = 3600							
TOTAL WATTS = 14,100							

0.2 5% AMPS

NOTES:
 1. THIS CONTRACTOR SHALL CONNECT ALL KITCHEN EQUIPMENT WHERE FURNISHED AS PART OF THE CONTRACT.
 2. THIS CONTRACTOR SHALL VERIFY EXACT LOCATION OF ALL KITCHEN, DISHWASHER AND FACILITY COM. EQUIPMENT BEFORE INSTALLATION OF ANY CONDUIT.
 3. CABINET SHALL BE 18" X 18" X 1/2" CONTRACTOR TO PROVIDE GROUND WITH RINGED MOTOR STARTERS AND INSTALL IN CABINET AS REQ'D.
 4. STUDS CONDUIT UP 1/4" & INSTALL GROUND WIRE "F" CONDUIT ON STUD.
 5. STUDS CONDUIT & WIRE INSTALL, "F" SINGLE GING CONDUIT WITH "F" SA. 125 V. GROUNDING TYPE RECEPT. GROUND WIRE W. DB 95 IN "F" S. RECEPT. RECEPT. CONNECT ONE SIDE OF RECEPT. TO 332 AND OTHER SIDE TO 334.
 6. "F" GROUND WIRE W. DB 95 IN "F" S. RECEPT. TO CONNECT TO EVAP FAN.