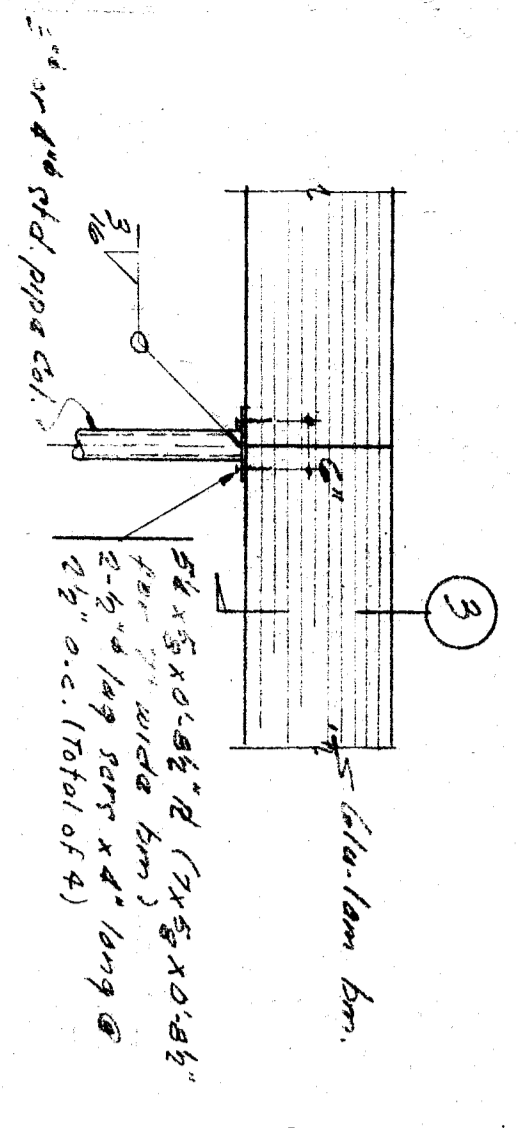
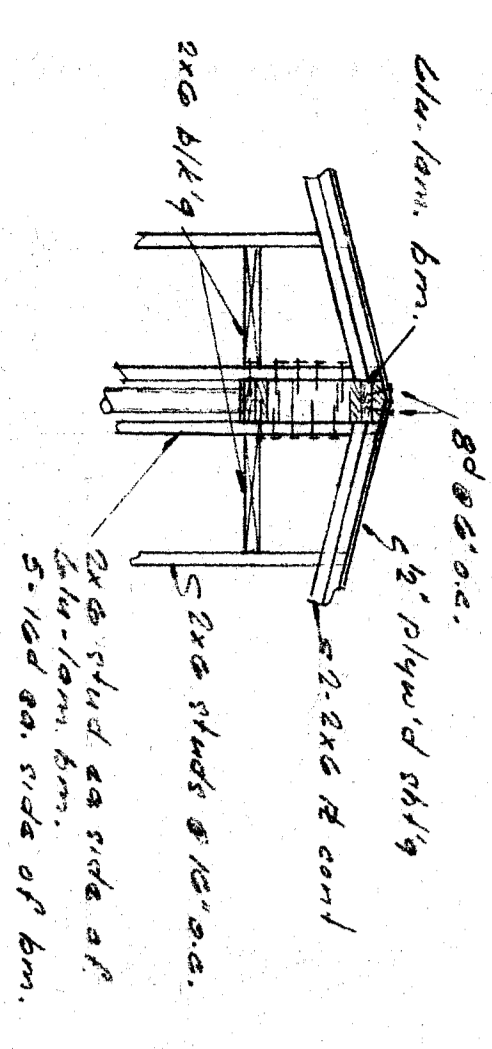


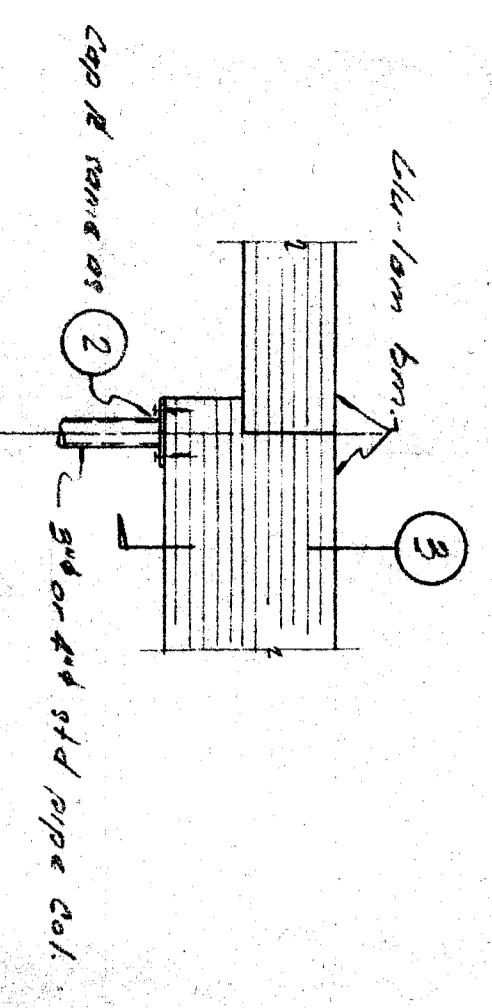
1



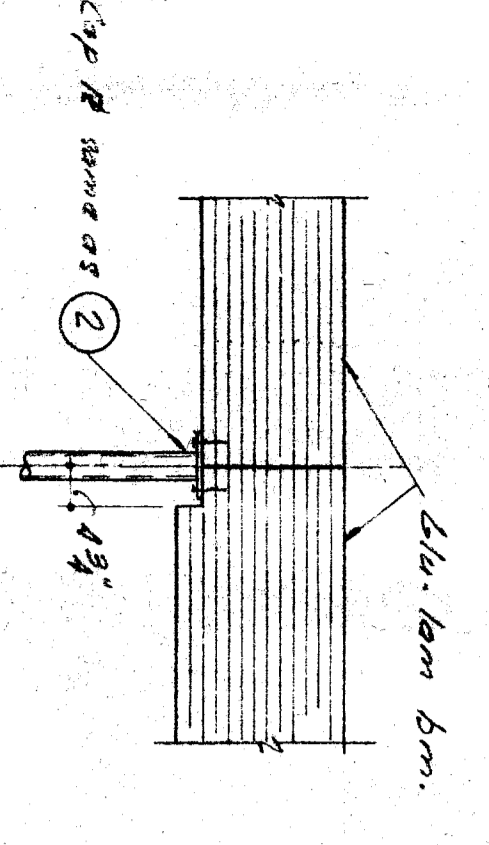
2



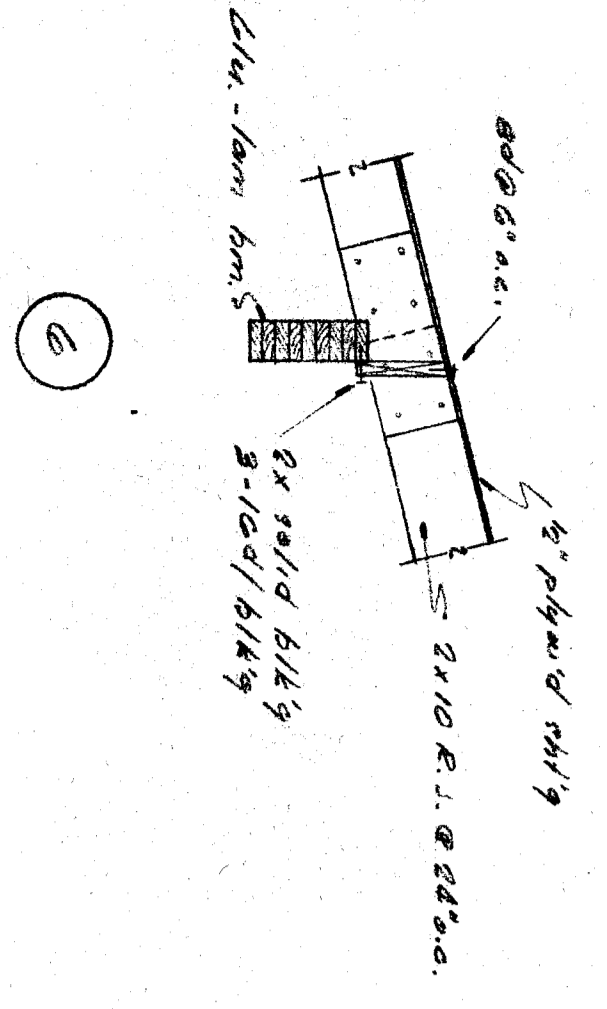
3



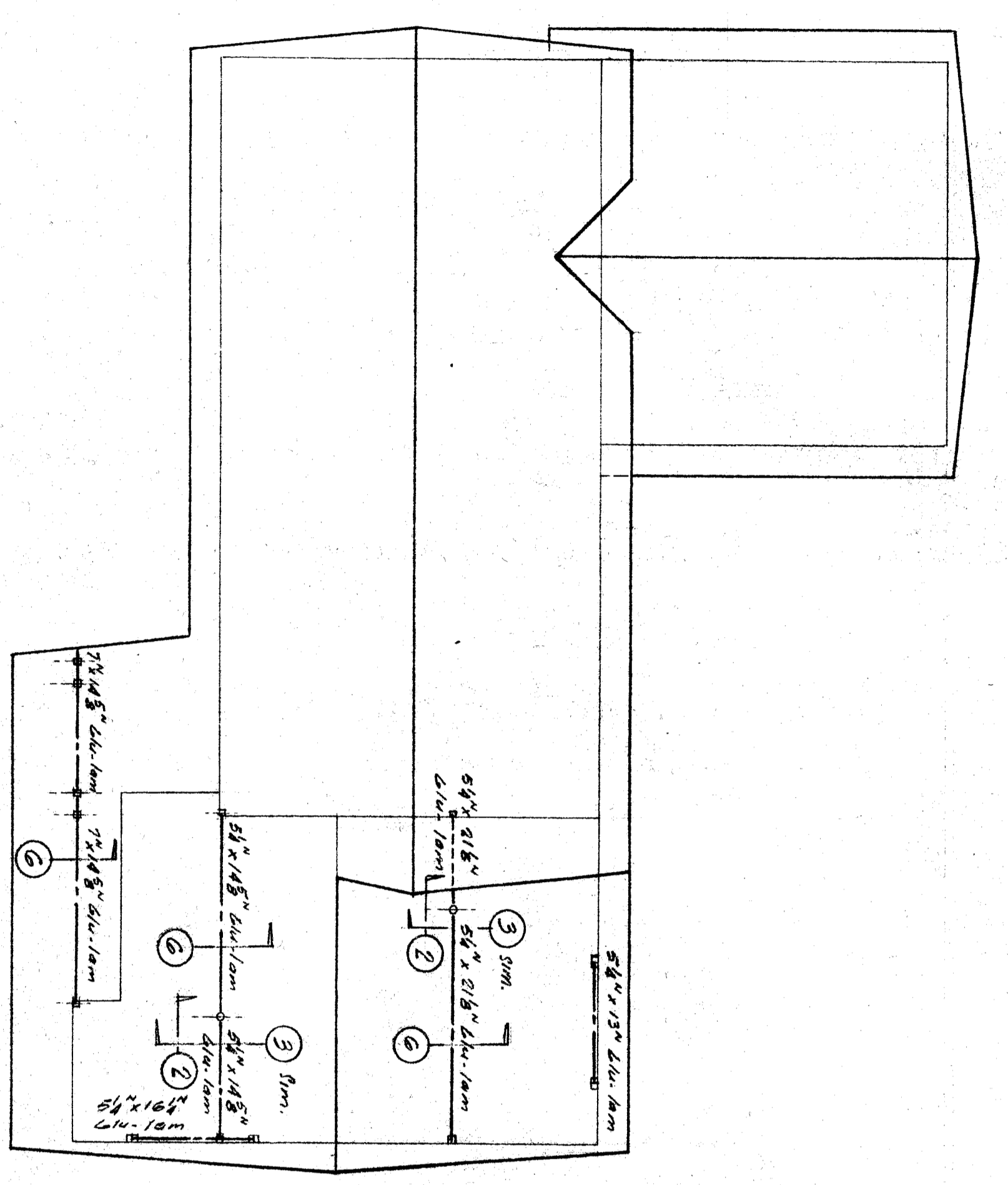
4



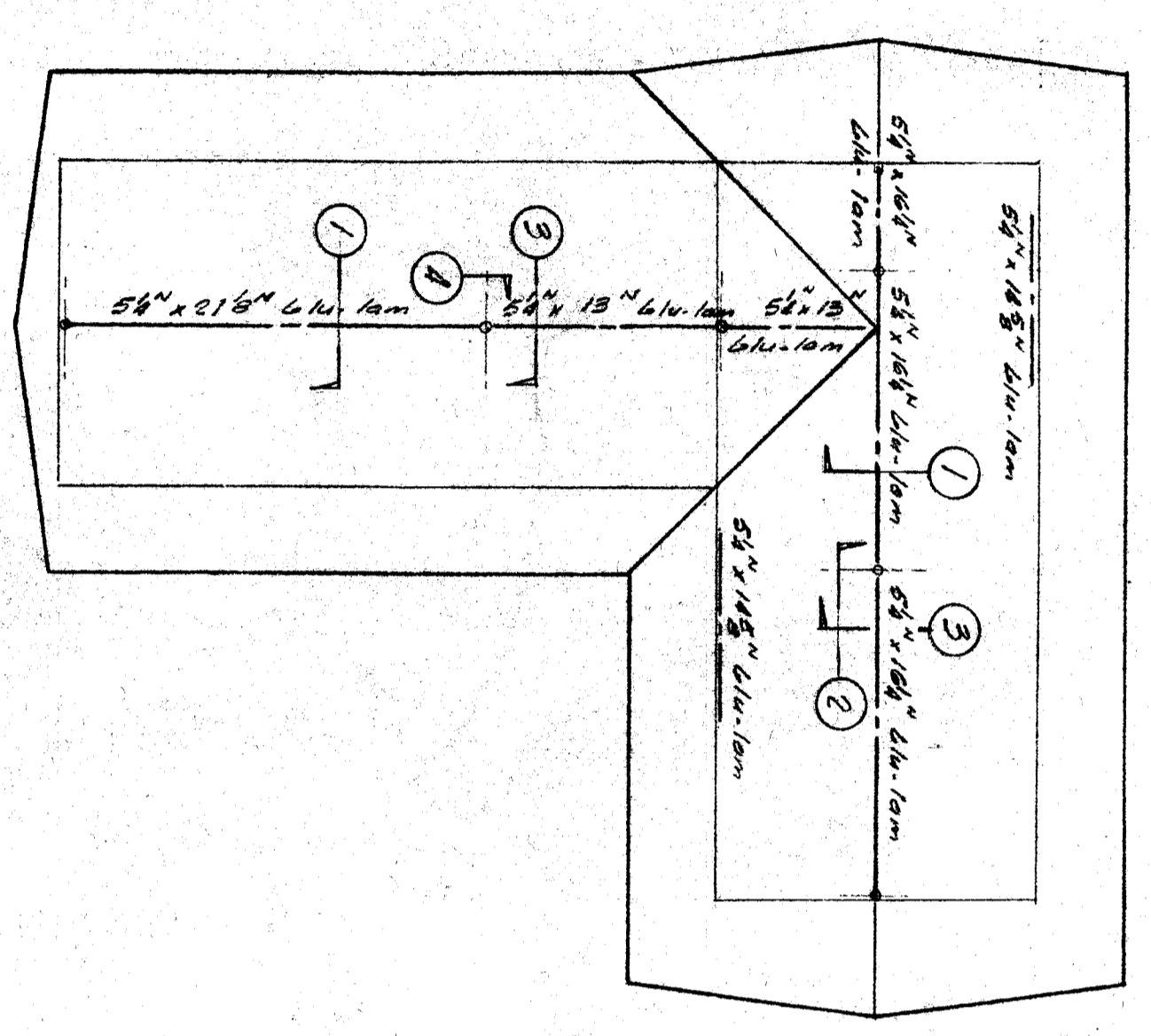
5



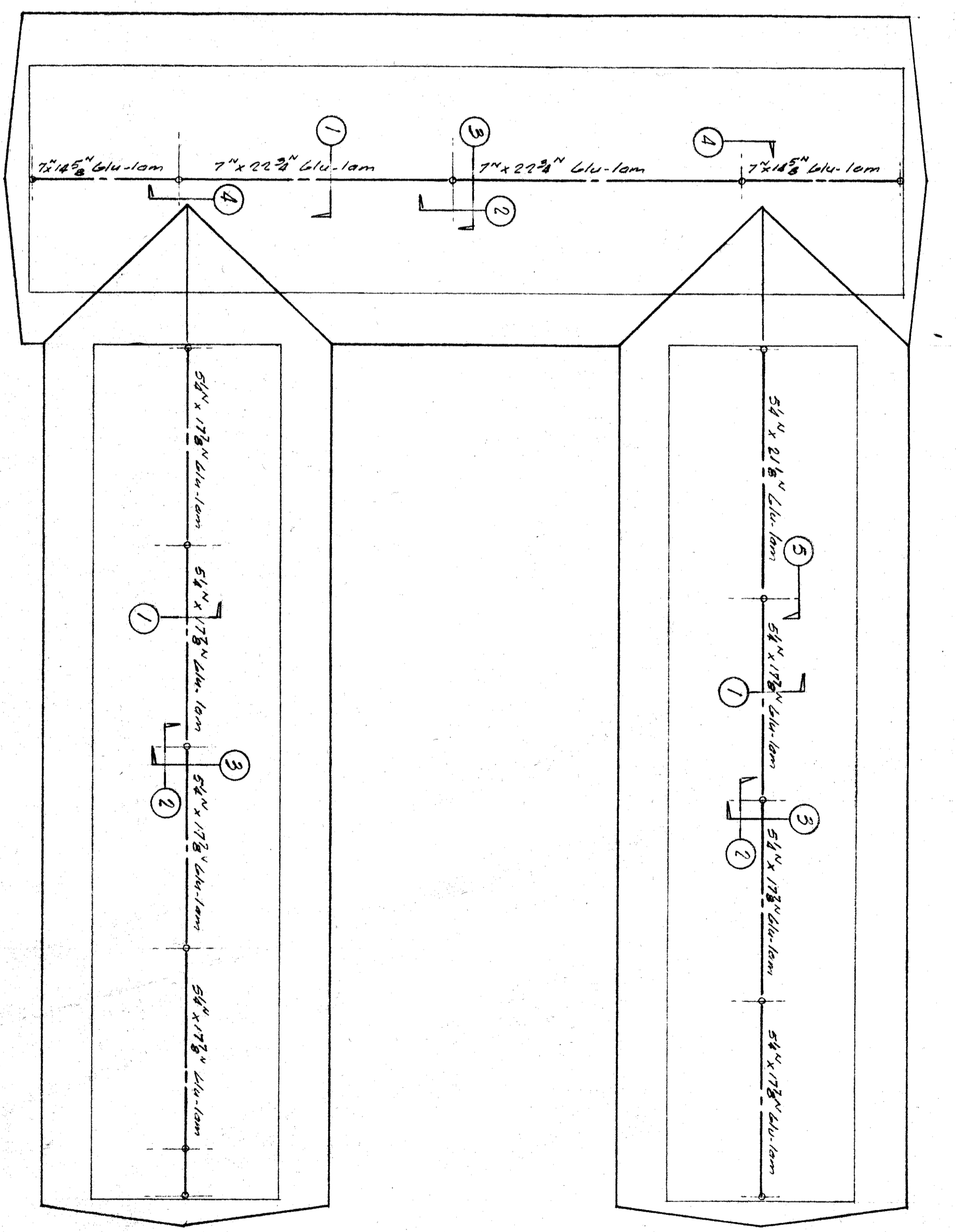
6



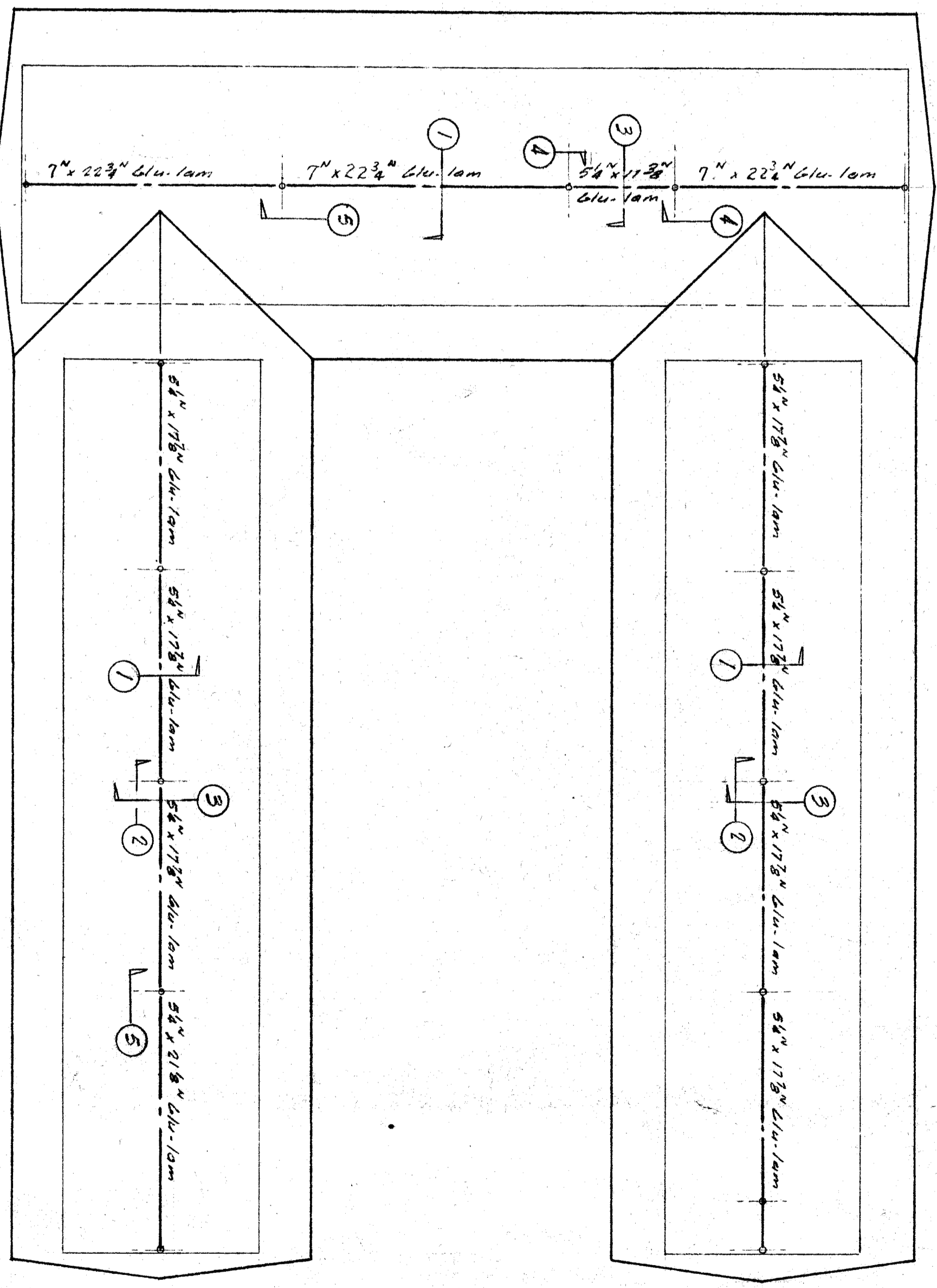
UNIT B Scale: 1/8" = 1'-0"
Notes: See S-18 for roof framing plan



UNIT C Scale: 1/8" = 1'-0"
Notes: See S-18 for roof framing plan



UNIT A Scale: 1/8" = 1'-0"
Notes: See S-8 for roof framing plan



UNIT D Scale: 1/8" = 1'-0"
Notes: See S-16 for roof framing plan

Note: This sheet is an alternate, using glued laminated beams in place of steel beams. Only the typical beam to column connections have been shown on this sheet. All other connections to be equivalent to those shown on other sheets for steel beams. Details of these other glued laminated beam connections to be submitted to the Structural Engineer for approval, before fabrication.

STATE OF CALIFORNIA DEPARTMENT OF PUBLIC WORKS DIVISION OF ARCHITECTURE 1918 APPROVED OCT 22 1939 HILLMAN & HOWELL STRUCTURAL ENGINEERS 104 ANAHEIM ST. LOS ANGELES, CALIF.	ARCHITECTS WRIGHT METCALF & PARSONS 400 S. WASHINGTON ST. LOS ANGELES, CALIF.	DATE: OCT 26 1939	EXAMINED BY: H. Takahashi CHECKED BY: WOOD BEAMS DATE: OCT 26 1939	JOB NO. 404 SHEET NO. 404-1
--	--	-------------------	--	--------------------------------