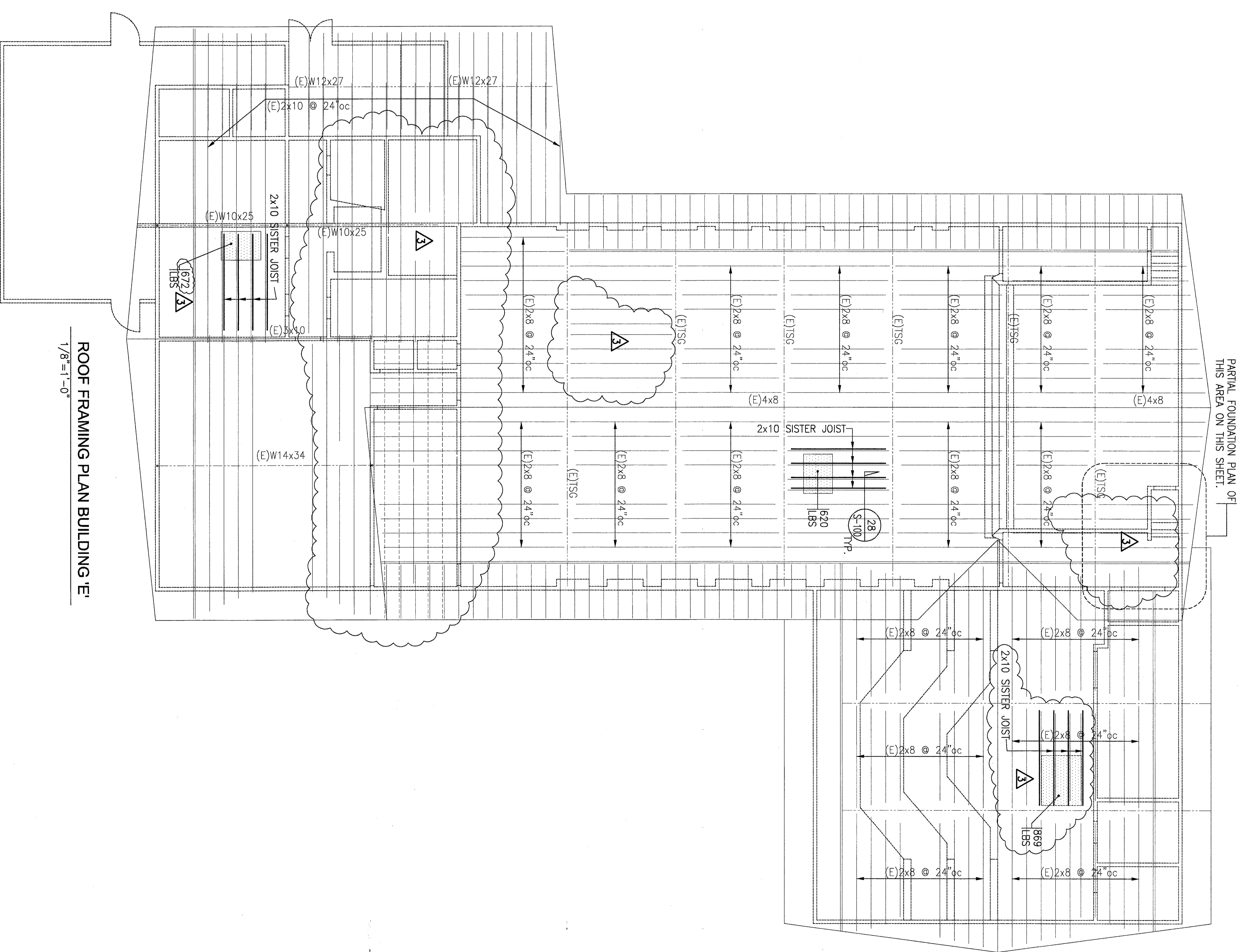
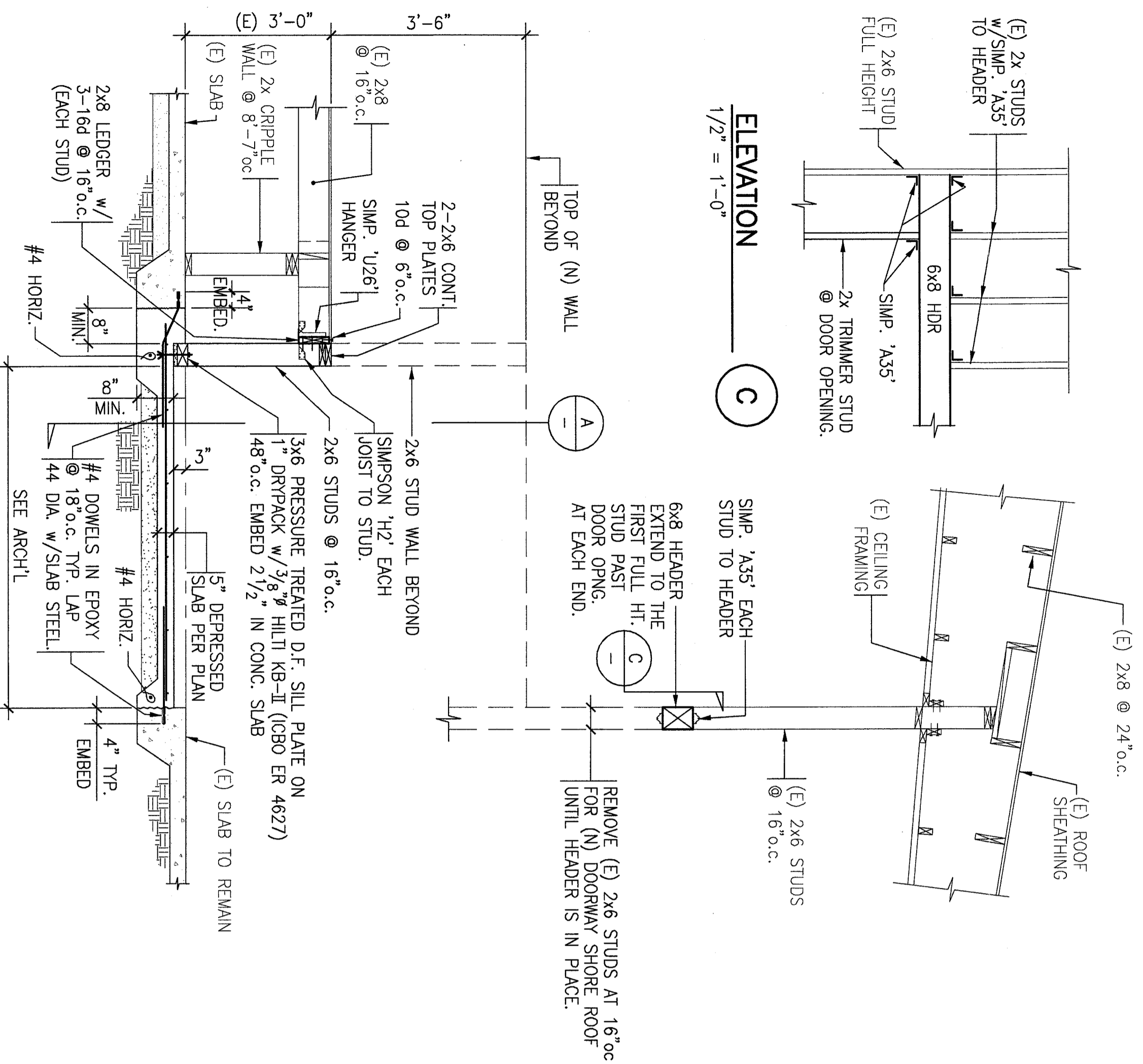


PARTIAL FOUNDATION PLAN BLDG-E
1/4" = 1'-0"

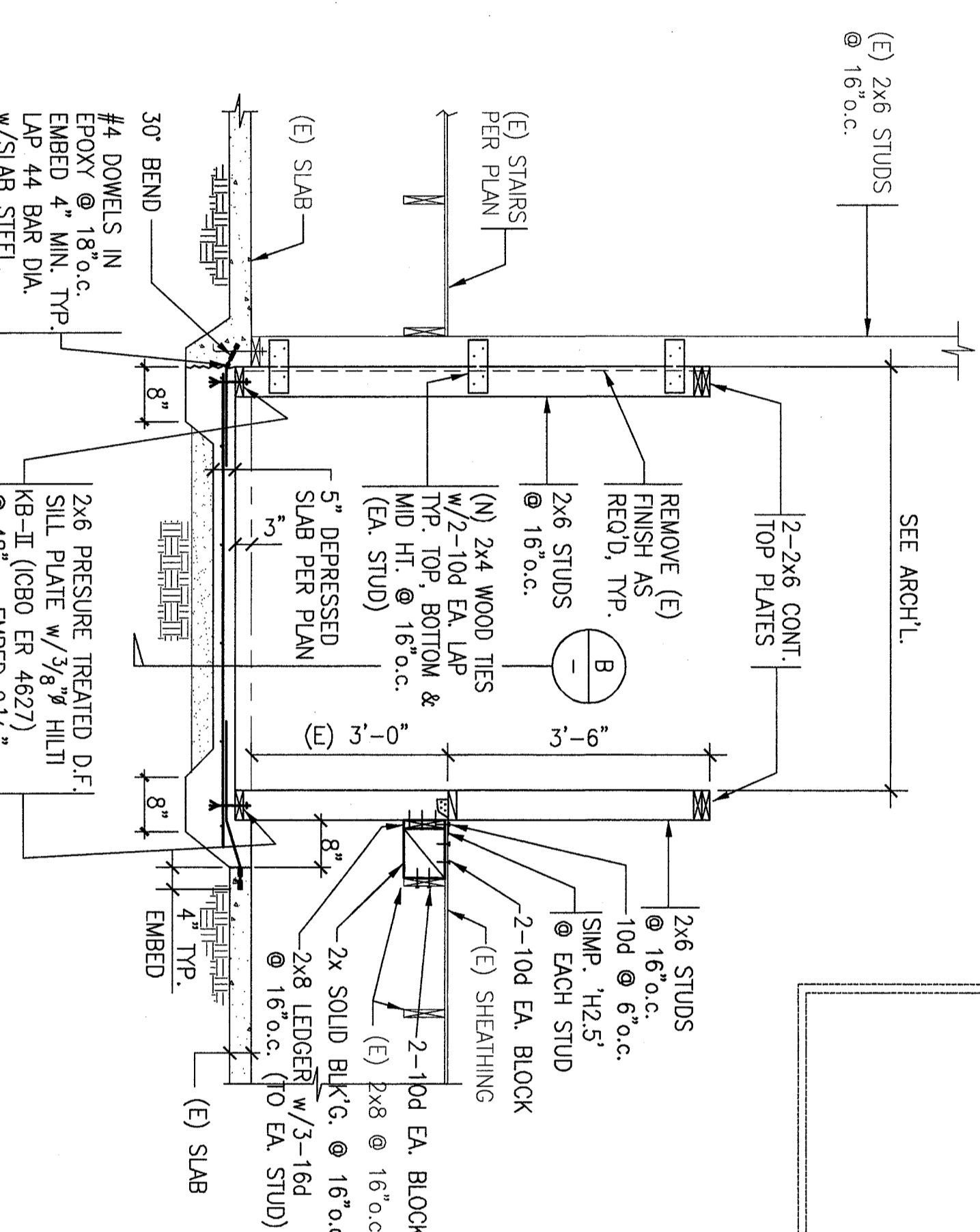


ROOF FRAMING PLAN BUILDING 'E'
1/8" = 1'-0"

Item No. 3. Refer to Sheet S-201
4/22/07 #3. Revised roof framing on Building 'E' as shown on Sheet AS-201 in order to reflect
revised HVAC unit location requirements per owner's request.

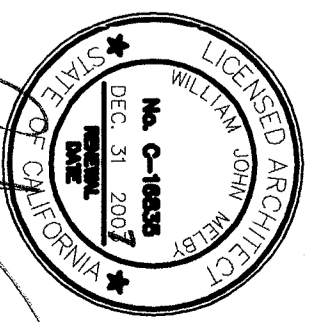


SECTION
1/2" = 1'-0"

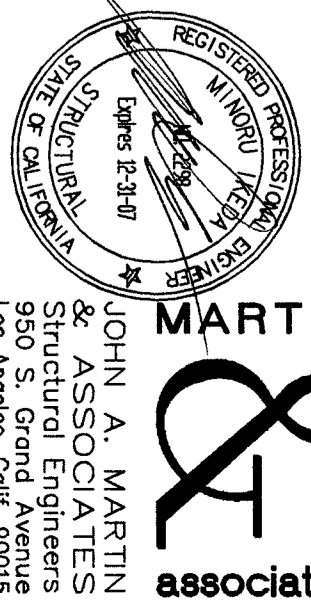


SECTION
1/2" = 1'-0"

ORDIZ MELBY ARCHITECTS, INC.
5500 KING AVENUE, SUITE 280
BAKERSFIELD, CALIFORNIA, 93309
TELEPHONE: (661) 832-5258
FACSIMILE: (661) 832-4291



DANNY E. GROSS, AIA
ARCHITECT #24728
WILLIAM J. MELBY, AIA
ARCHITECT #18385
CONSULTANT



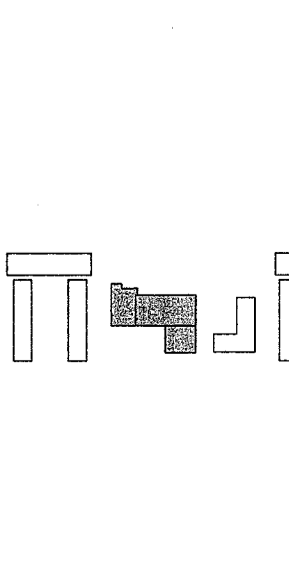
JOHN A. MARTIN
REGISTERED PROFESSIONAL ENGINEER
No. 20027
1500 S. Grand Ave., 4000
FLOOR 4000
BAKERSFIELD, CA 93309
Phone: (213) 483-5460
Fax: (213) 483-5084

IDENTIFICATION STAMP
DIVISION OF REGULATION SERVICES
OFFICE OF REGULATION SERVICES
APPL 03-107003
FILE # 15-6
AC _____ FLS _____ SS _____
DATE _____

MODERNIZATION AT
CURRAIN MIDDLE
SCHOOL
FOR:

BAKERSFIELD
CITY SCHOOL
DISTRICT

1116 LYNNIC WAY
BAKERSFIELD
CALIFORNIA
93309



BUILDING KEY PLAN

MARK	DATE	DESCRIPTION
SD		
CD		
△	10/29/07	ADDENDUM #3

20027480
DATE REVISION FILE
200257272 XXXXXXXX
DRAWN BY: T. WANG
CHECKED BY: SBF
CHECK AND APPROVE ALL ENGINEERING BEFORE REPORT SUBMISSION AND REVISIONS. THE ENGINEER, USER AND DESIGNER SHALL BE RESPONSIBLE FOR THE ACCURACY AND COMPLETENESS OF THE ARCHITECT'S PROVISIONS.
ORDIZ MELBY ARCHITECTS, INC. No. 2002

PARTIAL FOUNDATION PLAN
ROOF FRAMING PLAN
DETAILS & SECTIONS
BLDG-E
SHEET IDENTIFICATION NUMBER
A-S-201
SHEET OF