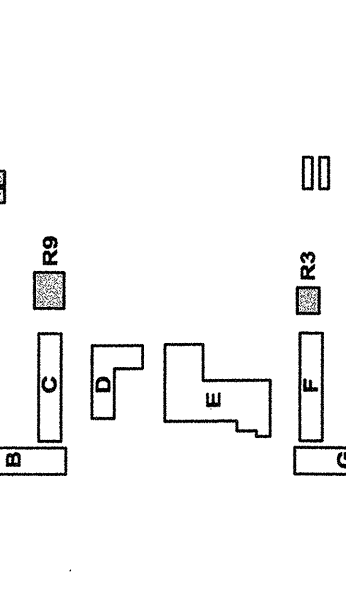


ROSE SHIM AND ASSOCIATES, INC.
 Electrical Consultants
 131 S. Dunsmuir - (559) 733-2871
 Visalia, California 93292-0105

IDENTIFICATION STAMP
 DIVISION OF REGULATION SERVICES
 APPL. 03-107003
 FILE # 15-6
 AC FLS SS
 DATE

**MODERNIZATION AT
 CURRAN MIDDLE
 SCHOOL
 FOR:
 BAKERSFIELD
 CITY SCHOOL
 DISTRICT**

1116 LYMRIC WAY
 BAKERSFIELD
 CALIFORNIA
 93309

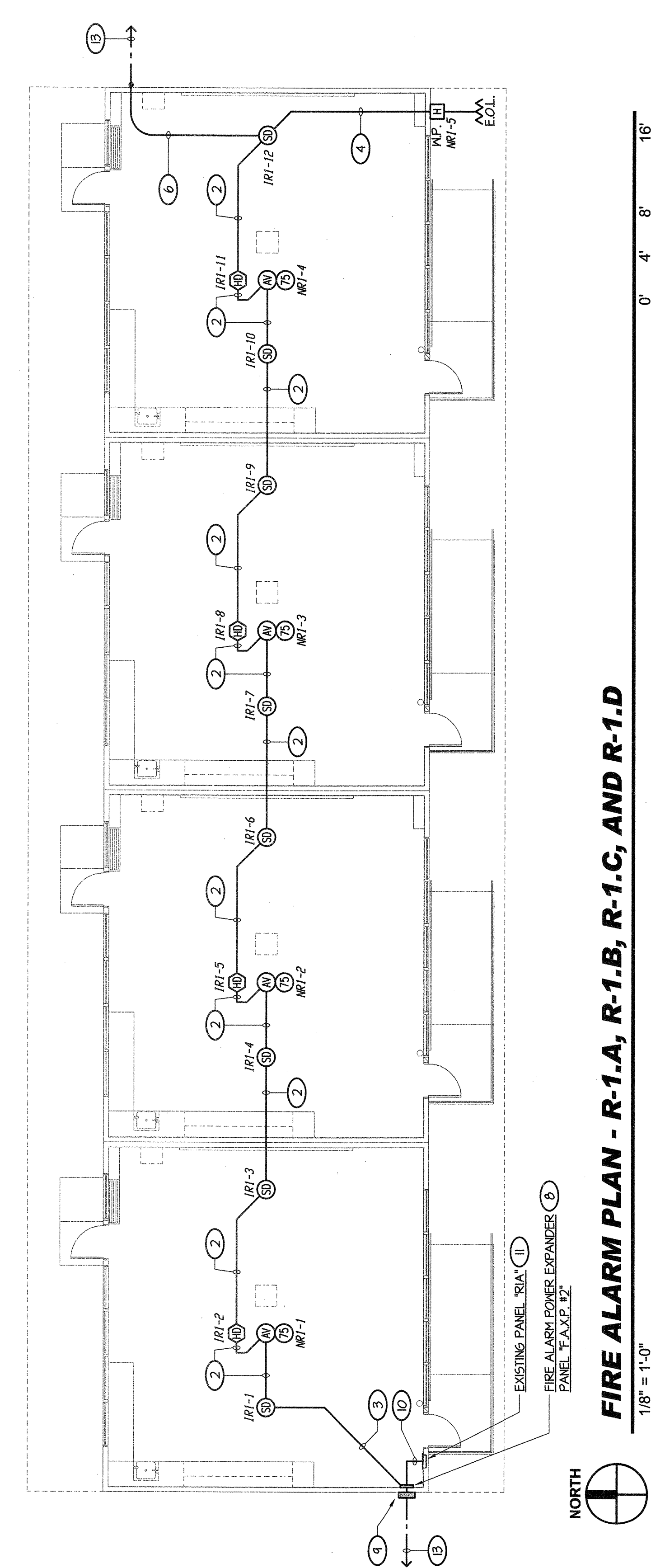


BUILDING KEY PLAN

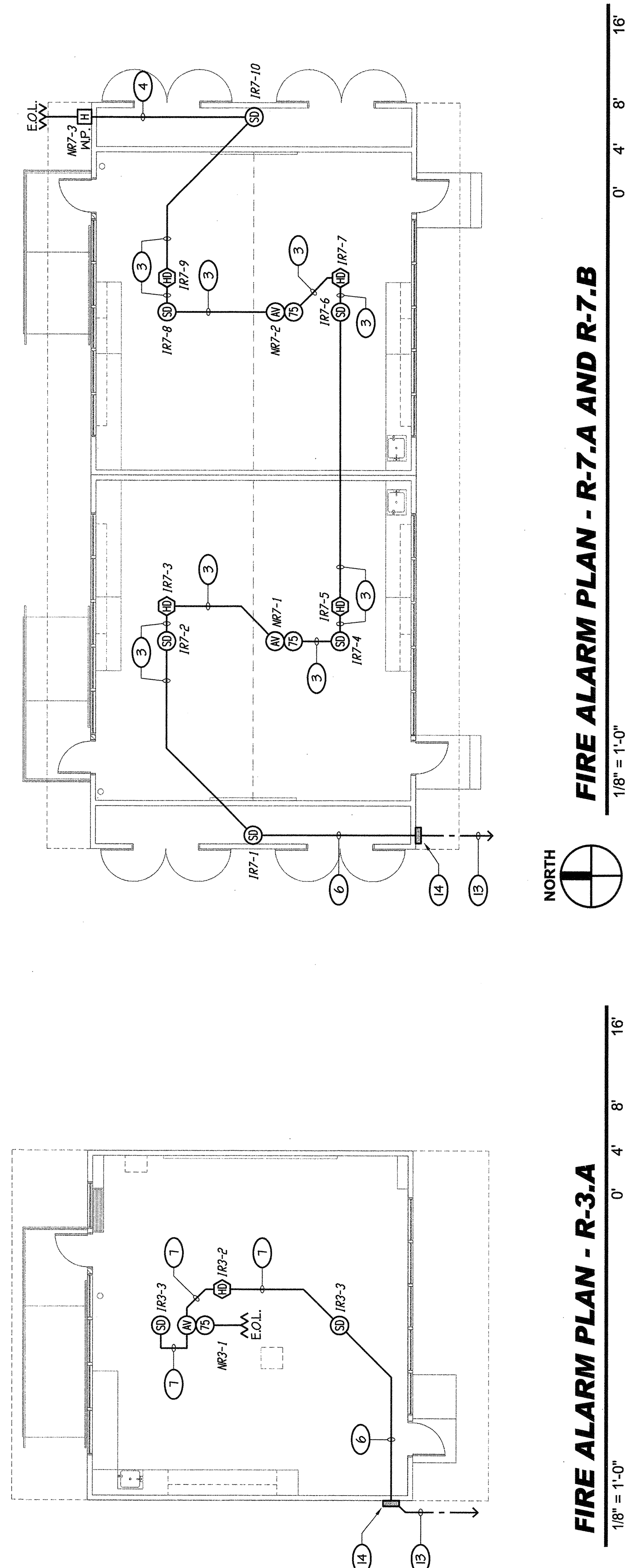
MARK	DATE	DESCRIPTION

APPROVED
 DIV. OF THE STATE ARCHITECT
 LOS ANGELES BASIN REGIONAL OFFICE
 DATE: FEB 10 2003
 DATE: FEB 10 2003

- NOTES (THIS SHEET ONLY):**
- 1) 1" - ONE "FA" CABLE, 4 #2.
 - 2) 3/4" - ONE "FA" CABLE, 4 #2.
 - 3) 3/4" - ONE "FA" CABLE, 2 #2.
 - 4) 1/2" - 2 #2.
 - 5) 1/2" - 4 #2.
 - 6) 3/4" - ONE "FA" CABLE, 2 #2.
 - 7) 3/4" - ONE "FA" CABLE.
 - 8) PROVIDE NEW FIRE ALARM POWER EXPANDER PANEL. LOCATE HIGH ON WALL JUST BELOW EXISTING CEILING LEVEL. PROVIDE MODULES AND CONNECT PER DETAIL #2E-146. INSTALL PER DETAIL #2E-150.
 - 9) SIGNAL RING CAN PER DETAIL #7E-150. LOCATE HIGH ON EXTERIOR WALL AT ATTIC LEVEL. RUN 1" - ONE "FA" CABLE FROM RING CAN TO NEW FAXP.
 - 10) 1/2" - 2 #2 + 1 #2 GND TO EXISTING ELECTRICAL PANEL. PUNCH OUT OF BUILDING AT ATTIC SPACE LEVEL AND RUN ON EXTERIOR WALL TO ELECTRICAL PANEL. SEAL AROUND ANY WALL PENETRATIONS AS REQUIRED TO PREVENT WEATHER INTRUSION. PROVIDE CONDUIT PROTECTORS IN ANY AVAILABLE EXISTING CONDUIT CONCEALED IN WALL TO PANEL.
 - 11) PROVIDE DEDICATED 20A, 1-POLE CIRCUIT BREAKER IN PANEL. LABEL "FIRE ALARM" - LEAVE ON. CIRCUIT BREAKER TO HAVE "LOCK-ON" ACCESSORY. PUNCH THRU EXISTING EXTERIOR WALL HEIGHT ABOVE ACCESSIBLE ATTIC SPACE. SEAL AROUND ALL CONDUIT PENETRATIONS AS REQUIRED TO BE WEATHER TIGHT. PROVIDE LIGHT TIGHT FLEXIBLE METALLIC CONDUIT BETWEEN BUILDING ATTIC SPACES.
 - 12) REFER TO SITE ELECTRICAL PLAN, SHEET #E-III FOR SITE CONTINUATION OF FIRE ALARM FEEDER.
 - 13) SIGNAL RING CAN PER DETAIL #7E-150. LOCATE HIGH ON WALL AT ATTIC LEVEL.
 - 14) 1" - ONE "FA" CABLE, #12.
 - 15) 3/4" - ONE "FA" CABLE, 2 #2.



FIRE ALARM PLAN - R-1.A, R-1.B, R-1.C, AND R-1.D
 1/8" = 1'-0"



FIRE ALARM PLAN - R-3.A
 1/8" = 1'-0"

FIRE ALARM PLAN - R-3.B
 1/8" = 1'-0"

FIRE ALARM PLAN - R-3.C
 1/8" = 1'-0"

FIRE ALARM PLAN - R-3.D
 1/8" = 1'-0"

FIRE ALARM PLAN - R-3.E
 1/8" = 1'-0"

FIRE ALARM PLAN - R-3.F
 1/8" = 1'-0"

FIRE ALARM PLAN - R-3.G
 1/8" = 1'-0"

FIRE ALARM PLAN - R-3.H
 1/8" = 1'-0"

FIRE ALARM PLAN - R-3.I
 1/8" = 1'-0"

FIRE ALARM PLAN - R-3.J
 1/8" = 1'-0"

FIRE ALARM PLAN - R-3.K
 1/8" = 1'-0"

FIRE ALARM PLAN - R-3.L
 1/8" = 1'-0"

FIRE ALARM PLAN - R-3.M
 1/8" = 1'-0"

FIRE ALARM PLAN - R-3.N
 1/8" = 1'-0"

FIRE ALARM PLAN - R-3.O
 1/8" = 1'-0"

FIRE ALARM PLAN - R-3.P
 1/8" = 1'-0"

FIRE ALARM PLAN - R-3.Q
 1/8" = 1'-0"

FIRE ALARM PLAN - R-3.R
 1/8" = 1'-0"

FIRE ALARM PLAN - R-3.S
 1/8" = 1'-0"

FIRE ALARM PLAN - R-3.T
 1/8" = 1'-0"

FIRE ALARM PLAN - R-3.U
 1/8" = 1'-0"

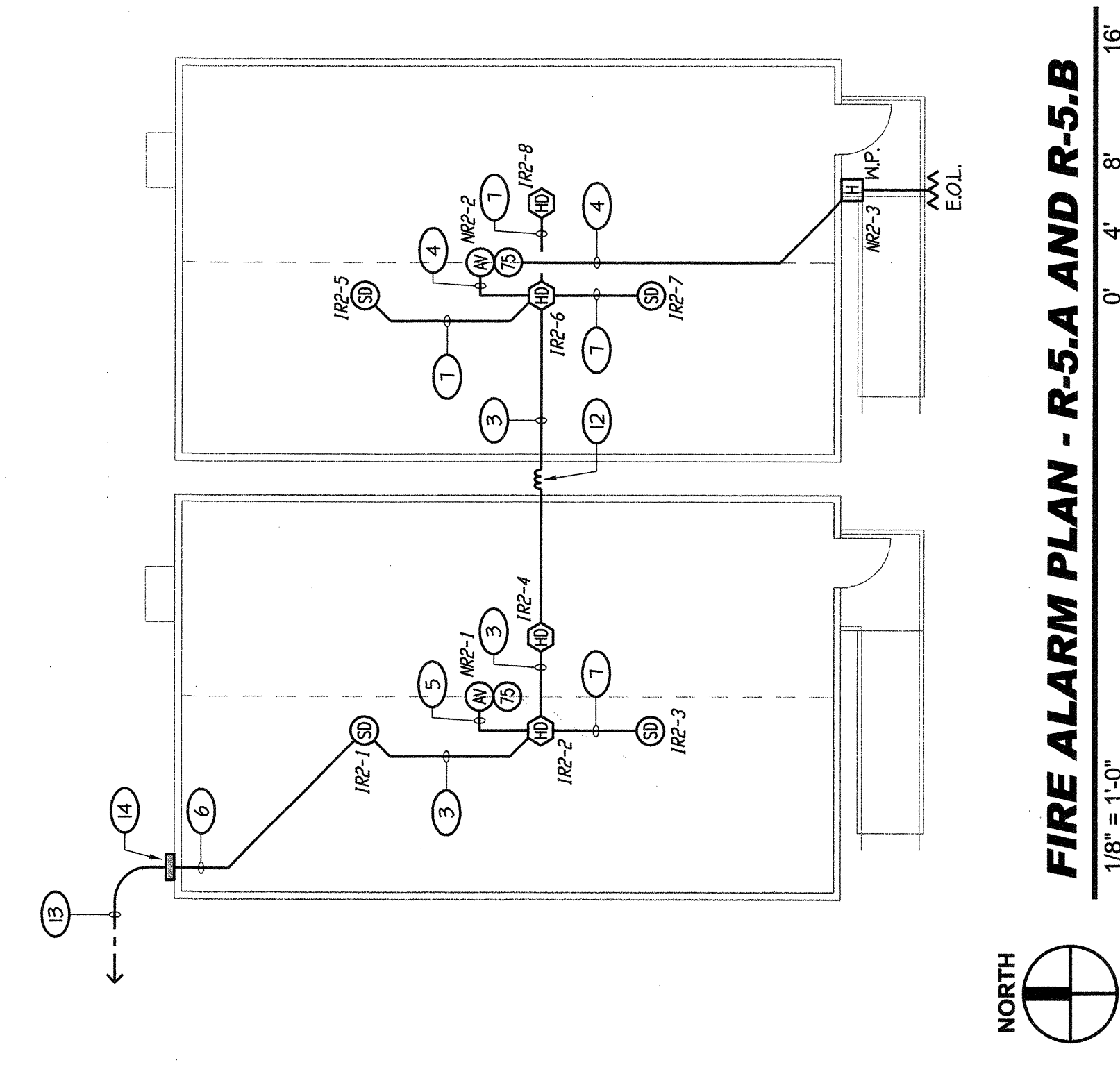
FIRE ALARM PLAN - R-3.V
 1/8" = 1'-0"

FIRE ALARM PLAN - R-3.W
 1/8" = 1'-0"

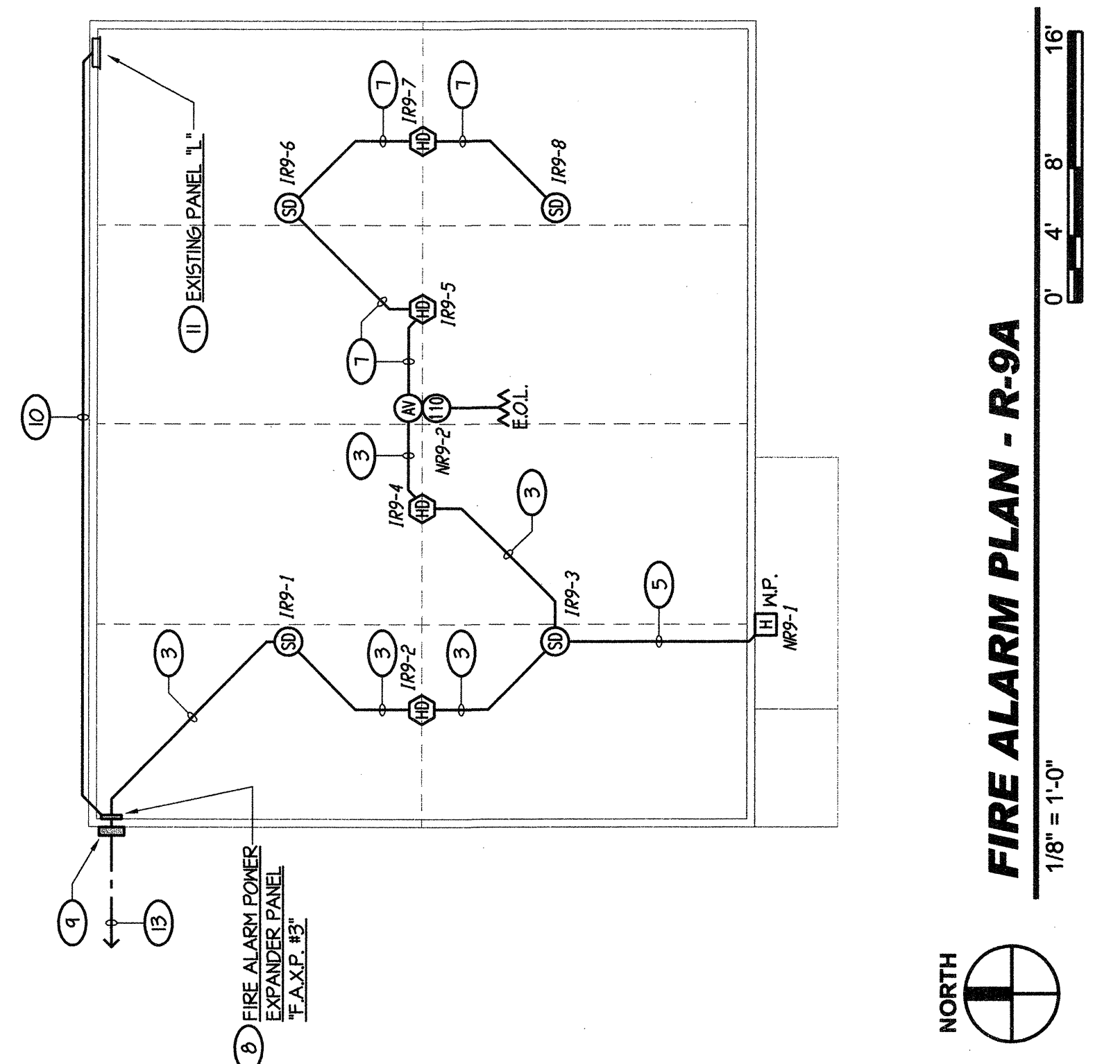
FIRE ALARM PLAN - R-3.X
 1/8" = 1'-0"

FIRE ALARM PLAN - R-3.Y
 1/8" = 1'-0"

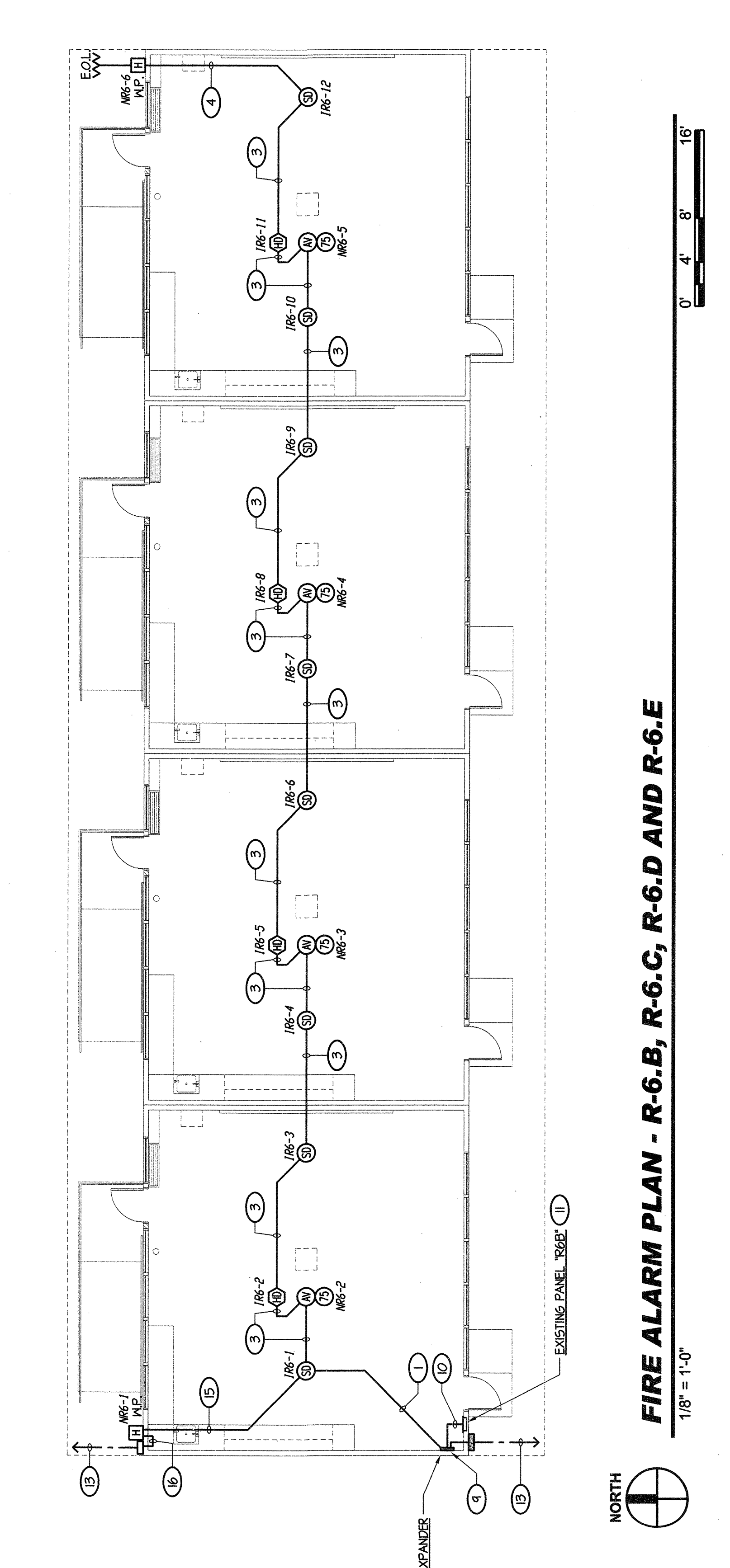
FIRE ALARM PLAN - R-3.Z
 1/8" = 1'-0"



FIRE ALARM PLAN - R-5.A AND R-5.B
 1/8" = 1'-0"



FIRE ALARM PLAN - R-9.A
 1/8" = 1'-0"



FIRE ALARM PLAN - R-6.B, R-6.C, R-6.D AND R-6.E
 1/8" = 1'-0"

COMPLETE AUTOMATIC FIRE ALARM PLAN SUBMITTAL
 THE FIRE ALARM SYSTEM SHOWN ON THESE PLANS HAS BEEN SUBMITTED AND APPROVED BY THE DIVISION OF THE STATE ARCHITECT. ANY SUBSTITUTION OF THE FIRE ALARM SYSTEM SHALL BE SUBMITTED TO THE ARCHITECT FOR REVIEW AND APPROVAL. THE CONTRACTOR SHALL PAY ANY ADDITIONAL FEES THAT ARE INCURRED DUE TO THIS SUBSTITUTION.
 THE AUTOMATIC FIRE ALARM SYSTEM SHALL COVER ALL ROOMS AND AREAS AND UPON ACTIVATION OF AN INITIATING DEVICE ALERT ALL OCCUPANTS AND TRANSMIT THE ALARM SIGNAL TO THE FIRE DEPARTMENT. THE SYSTEM SHALL BE INSTALLED IN ACCORDANCE WITH THE EXCEPTED IN EMERGENCY EXPRESS TERMS OF THE PROPOSED S.F.P.A. AMENDMENTS TO 2001 C.F.C. SECTION 20 (C.F.C. SECTIONS 1009.2.4.2.1) AND 1009.2.4.2.1.5)