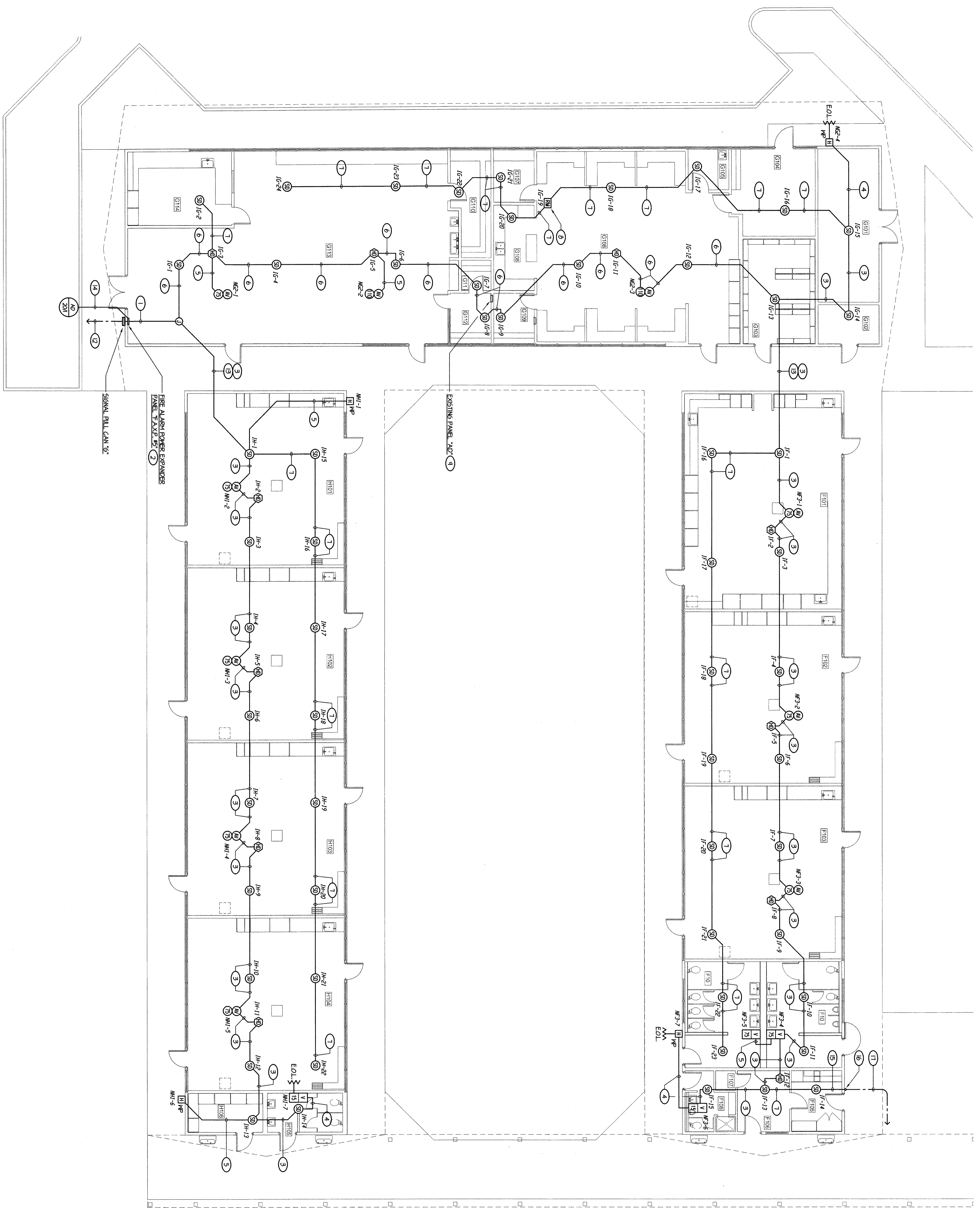


FIRE ALARM PLAN - BLDGS F, G AND H



- NOTES (THIS SHEET ONLY):**
- 1) 1/2" - ONE 7/8" CABLE 6 #12 TO FACP #5.
 - 2) PROVIDE NEW FIRE ALARM EXPANDER PANEL, FACP #4. MOUNT HIGH ON WALL JUST BELOW CEILING LEVEL. PROVIDE KNOBLES AND CONNECT PER DETAIL F2E-146. SIGNAL PER DETAIL H2E-150.
 - 3) 3/4"C - ONE 7/8" CABLE 2 #12.
 - 4) 1/2"C - 2 #12.
 - 5) 1/2"C - 4 #12.
 - 6) 3/4"C - ONE 7/8" CABLE 4 #12.
 - 7) PROVIDE A RELAY KNOT FOR "UNIT SHUTDOWN" OF AC UNIT. FLUSH MOUNT IN CEILING, COORDINATE WITH MECHANICAL CONTRACTOR FOR ALL REQUIREMENTS AND INTERCONNECTION. PROVIDE ENHANCED WATERPLATE AT RELAY KNOT. NO UNIT SHUTDOWN.
 - 8) PROVIDE DEDICATED 20A F-HOLE CIRCUIT BREAKER IN (E) PANEL, "AP" AND LABEL FIRE ALARM - LEAVE ON. PROVIDE CIRCUIT BREAKER HANDLE LOCK-ON ACCESSORY.
 - 9) PROVIDE PULL CALL ON EXTERIOR WALL PER DETAIL H7E-150. RAIN TC - ONE 5/8"X4" CABLE FROM PULL CALL TO FACP #5.
 - 10) RAIN ALL FEEDS CONCEALED WHEREVER POSSIBLE. CONTRACTOR TO VERIFY ANY EXPOSED CONDUIT ROUTING WITH OWNER PRIOR TO ANY WORK.
 - 11) REFER TO SITE ELECTRICAL PLAN SHEET #E-11 FOR SITE CONTINUATION OF FIRE ALARM FEEDER.
 - 12) VERIFY ROUTING OF FEEDER BETWEEN BUILDINGS WITH ARCHITECT PRIOR TO ANY WORK.
 - 13) 1/2"C - 2 #12 + 1 #12 GND. RAIN CONCEALED TO (E) PANEL, "AP". FISH DOWN WALL TO PANEL, "AP" AS REQUIRED.
 - 14) 3/4"C - ONE 7/8" CABLE.
 - 15) RATCH OUT OF BUILDING AT ATTIC LEVEL. PROVIDE LB AS REQUIRED.
 - 16) RAIN TO BUILDING. RAIN PER SITE ELECTRICAL PLAN SHEET #E-11. SAME CUT EXISTING CONCRETE AS REQUIRED.

#	ROOM NAME	#	ROOM NAME
F101	CLASSROOM	G106	COOKING ROOM
F102	CLASSROOM	G107	OFFICE
F103	CLASSROOM	G108	DEMO AREA
F104	CLASSROOM	G109	SUPPLY
F105	CHECK-OUT	G110	TOOL ROOM
F106	OFFICE	G111	SLEEPY
F107	CLOSET	G112	OFFICE
F108	MEN	G113	WOOD SHOP
F109	SHOWER	G114	PAINT ROOM
F110	MECHANICAL	H101	CLASSROOM
G101	ELECTRICAL	H102	CLASSROOM
G103	BOOK ROOM	H103	CLASSROOM
G104	DINING ROOM	H104	CLASSROOM
G105	GROOMING ALCOVE	H105	GIRLS
		H106	JANITOR

COMPLETE AUTOMATIC FIRE ALARM PLAN SUBMITTAL

THE FIRE ALARM SYSTEM SHOWN ON THESE PLANS HAS BEEN SUBMITTED AND APPROVED BY THE DIVISION OF THE STATE ARCHITECT. ANY SUBSTITUTION OF THE FIRE ALARM SYSTEM SHALL BE APPROVED BY THE ARCHITECT. THE ARCHITECT'S REVIEW OF THE PLANS IS LIMITED TO THE TECHNICAL ASPECTS AND DOES NOT INCLUDE THE DESIGN OF THE SYSTEM OR THE INSTALLATION OF THE SYSTEM. THE ARCHITECT'S REVIEW DOES NOT CONSTITUTE A GUARANTEE OF THE ACCURACY OF THE INFORMATION PROVIDED OR THE PERFORMANCE OF THE SYSTEM. THE ARCHITECT'S REVIEW DOES NOT CONSTITUTE A GUARANTEE OF THE ACCURACY OF THE INFORMATION PROVIDED OR THE PERFORMANCE OF THE SYSTEM.

THE AUTOMATIC FIRE ALARM SYSTEM SHALL COVER ALL SCOPED AND AREAS AND FROM ALL AREAS OF THE BUILDING. THE ARCHITECT'S REVIEW DOES NOT CONSTITUTE A GUARANTEE OF THE ACCURACY OF THE INFORMATION PROVIDED OR THE PERFORMANCE OF THE SYSTEM. THE ARCHITECT'S REVIEW DOES NOT CONSTITUTE A GUARANTEE OF THE ACCURACY OF THE INFORMATION PROVIDED OR THE PERFORMANCE OF THE SYSTEM.

ORDIZ MELBY ARCHITECTS, INC.
 5900 KING AVENUE SUITE 280
 BAKERSFIELD, CALIFORNIA 93309
 TELEPHONE (805) 832-8288
 FACSIMILE (805) 832-4291

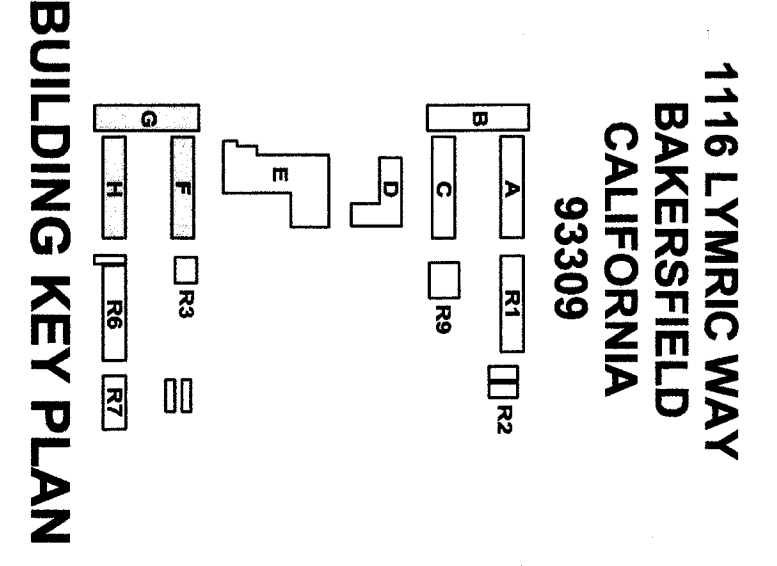
ROSE SHING AND ASSOCIATES, INC.
 131 S. DUNSMOUTH - (559) 723-2671
 VESPER, CALIFORNIA 93222-6705

DANNY E. CHIZ, AIA
 ARCHITECT C-14728
 WILLIAM J. MELBY, AIA
 ARCHITECT C-16835

IDENTIFICATION STAMP
 DIVISION OF STATE ARCHITECT
 OFFICE OF REGULATION SERVICES
 FILE # 15-6
 AC _____ FIS _____ SS _____
 DATE _____

MODERNIZATION AT CURRAN MIDDLE SCHOOL FOR: BAKERSFIELD CITY SCHOOL DISTRICT

1116 LYMRIC WAY BAKERSFIELD CALIFORNIA 93309



MARK	DATE	DESCRIPTION

AE-143

FIRE ALARM PLAN - BLDGS F, G & H

SHEET IDENTIFICATION NUMBER

AE-143

SHEET OF